



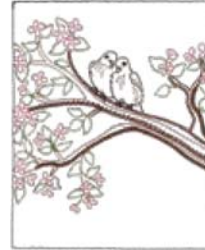
FQ602_48 Tile 1
4.01 X 5.00 in.
101.85 X 127.00 mm
8,814 St. ❄️



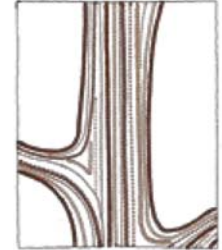
FQ603_48 Tile 2
4.01 X 5.01 in.
101.85 X 127.25 mm
10,646 St. ❄️ L



FQ604_48 Tile 3
4.01 X 5.03 in.
101.85 X 127.76 mm
12,973 St. ❄️ L



FQ605_48 Tile 4
4.02 X 5.00 in.
102.11 X 127.00 mm
9,469 St. ❄️



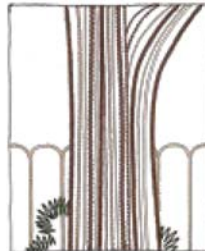
FQ606_48 Tile 5
4.01 X 5.02 in.
101.85 X 127.51 mm
11,027 St. ❄️ L



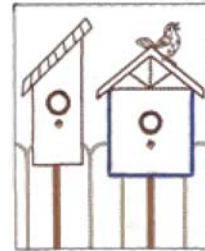
FQ607_48 Tile 6
4.01 X 5.00 in.
101.85 X 127.00 mm
8,227 St. ❄️



FQ608_48 Tile 7
4.01 X 5.00 in.
101.85 X 127.00 mm
6,108 St. ❄️



FQ609_48 Tile 8
4.01 X 5.01 in.
101.85 X 127.25 mm
12,278 St. ❄️ L



FQ610_48 Tile 9
4.01 X 5.01 in.
101.85 X 127.25 mm
6,077 St. ❄️ L



FQ611_48 Tile 10
4.01 X 5.01 in.
101.85 X 127.25 mm
12,871 St. ❄️ L



FQ612_48 Tile 11
4.02 X 5.02 in.
102.11 X 127.51 mm
15,326 St. ❄️ L



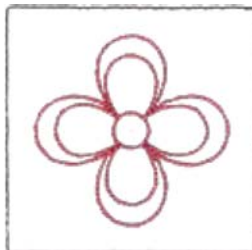
FQ613_48 Tile 12
4.01 X 5.01 in.
101.85 X 127.25 mm
13,724 St. ❄️ L



FQ616_48 Long Side
2.33 X 5.00 in.
59.18 X 127.00 mm
3,744 St. ❄️



FQ614_48 Short Side
4.00 X 2.34 in.
101.60 X 59.44 mm
3,324 St. ❄️



FQ615_48 Corner Piece
2.32 X 2.32 in.
58.93 X 58.93 mm
1,010 St. ❄️

Instructions included to assemble wall hanging using all designs in this pack!



❄️ Design contains a loose fill.
❄️ Some white areas shown are not stitched.

L Design is larger than 5" (127 mm) in either direction.
S Design is smaller than 1.5" (38.1 mm) in either direction.

Listings below indicate color sample, stitching order and suggested thread color number, Isacord, Yenmet or YLI Variegated threads.

FQ602_48 Tile 1

- 1. Dark Tree Shading.....0853
- 2. Light Tree Shading.....1172
- 3. Bird.....0622
- 4. Beak & Feet.....0873
- 5. Eye.....0132
- 6. Leaves5822
- 7. Flowers2155
- 8. Placement Stitch.....0020

FQ603_48 Tile 2

- 1. Light Tree Shading.....1172
- 2. Dark Tree Shading.....0853
- 3. Nest.....0651
- 4. Light Bird Shading.....3652
- 5. Dark Bird Shading.....3953
- 6. Beak.....0873
- 7. Eye.....0132
- 8. Leaves5822
- 9. Placement Stitch.....0020

FQ604_48 Tile 3

- 1. Light Tree Shading.....1172
- 2. Dark Tree Shading.....0853
- 3. Light Bird Shading.....3652
- 4. Dark Bird Shading.....3953
- 5. Beak & Feet.....0873
- 6. Eye.....0132
- 7. Leaves5822
- 8. Flowers2155
- 9. Placement Stitch.....0020

FQ605_48 Tile 4

- 1. Light Tree Shading.....1172
- 2. Dark Tree Shading.....0853
- 3. Feet.....0111
- 4. Birds.....0873
- 5. Bird Light Shading.....0672
- 6. Beaks.....0152
- 7. Eyes.....0132
- 8. Leaves5822
- 9. Flowers2155
- 10. Placement Stitch.....0020

FQ606_48 Tile 5

- 1. Light Tree Shading.....1172
- 2. Dark Tree Shading.....0853
- 3. Placement Stitch.....0020

FQ607_48 Tile 6

- 1. Light Tree Shading.....1172
- 2. Dark Tree Shading.....0853
- 3. Beak & Feet.....0873
- 4. Head.....0111
- 5. Body.....1375
- 6. Light Orange Bird Shading.....0821
- 7. Dark Orange Bird Shading.....0922
- 8. Eye.....0132
- 9. Leaves5822
- 10. Flowers2155
- 11. Placement Stitch.....0020

FQ608_48 Tile 7

- 1. Fence.....0761
- 2. House Dark Shading0853
- 3. House Light Shading0934
- 4. House.....3641
- 5. Light Orange Bird Shading.....0811
- 6. Dark Orange Shading0904
- 7. Feet.....0111
- 8. Bird.....4174
- 9. Eye.....0020
- 10. Placement Stitch.....4174

FQ609_48 Tile 8

- 1. Light Tree Shading.....1172
- 2. Dark Tree Shading.....0853
- 3. Fence.....0761
- 4. Bush.....5633
- 5. Placement Stitch.....0020

FQ610_48 Tile 9

- 1. Fence.....0761
- 2. Blue House.....3641
- 3. Red House & Blue House Roof...1311
- 4. Red House Roof, Trim & Holes.....0853
- 5. House Poles & Perches0934
- 6. Bird.....1061
- 7. Beak & Feet.....0873
- 8. Eye.....0132
- 9. Placement Stitch.....0020

FQ611_48 Tile 10

- 1. Fence.....0761
- 2. Pole.....0934
- 3. Bush.....5633
- 4. Leaf Bush.....5833
- 5. Grass5531
- 6. Flowers, Leaves & Stem.....5643
- 7. Flower.....1600
- 8. Light Bird Shading.....0131
- 9. Beak.....0873
- 10. Dark Bird Shading.....0111
- 11. Eye.....0132
- 12. Placement Stitch.....0020

FQ612_48 Tile 11

- 1. Leaf Bush.....5833
- 2. Hydrangea Leaves.....5822
- 3. Daisy Stem & Leaves.....5643
- 4. Daisy.....0221
- 5. Daisy Stamen.....0776
- 6. Dark Tree Shading.....0853
- 7. Light Tree Shading.....1172
- 8. Fence.....0761
- 9. Bush.....5633
- 10. Placement Stitch.....0020

FQ613_48 Tile 12

- 1. Hydrangea Leaves.....5822
- 2. Hydrangea9912
- 3. Poles.....0934
- 4. Fence.....0761
- 5. Grass5531
- 6. Daisy Leaves & Stems5643
- 7. Daisies0221
- 8. Daisy Stamens.....0776
- 9. Placement Stitch.....0020

FQ614_48 Short Side

- 1. Dark Shading.....2152
- 2. Light Shading.....1755
- 3. Placement Stitch.....0020

FQ615_48 Corner

- Piece**
- 1. Flower.....2152
 - 2. Placement Stitch.....0020

FQ616_48 Long Side

- 1. Dark Shading.....2152
- 2. Light Shading.....1755
- 3. Placement Stitch.....0020

Visions of Spring Wall Hanging



SUPPLIES:

- OESD Signature Pack Visions of Spring
- Isacord embroidery thread
- OESD Bobbin Thread
- Temporary Spray adhesive such as 101 Quilt Basting Spray
- OESD Heavy Weight Cut-Away
- Fusible Bias tape (5.5 yds or 5m)
- 2 ¼ yds of fabric (this will include the blocks, backing and binding)

Chart

A	B	B	B	A
C	FQ602_48	FQ603_48	FQ604_48	C
C	FQ605_48	FQ606_48	FQ607_48	C
C	FQ608_48	FQ609_48	FQ610_48	C
C	FQ611_48	FQ612_48	FQ613_48	C
A	B	B	B	A

A=FQ615_48 B=FQ614_48 C=FQ616_48

EMBROIDERY:

1. Embroider each design for the wall hanging using two layers of OESD Heavy Weight Cut Away stabilizer in each hooping. Be sure to use the 101 Quilt Basting Spray temporary spray adhesive to adhere all layers of stabilizer and fabric together for best stitch results. These blocks will fit in a standard 5" x 7" hoop. You will also need to embroider for the binding: FQ616_48 x 8, FQ614_48 x 6 and FQ615_48 x 4.
2. The last thing that will stitch in each of these squares is an outline stitch. This stitch is very important in the process of putting the design together so it is vital that it is not skipped when embroidering. When choosing the color for this outline stitch keep in mind that you want it to blend in with your background fabric. You should also stitch the designs in their number order to speed up the piecing process.
3. Once the embroidery process is complete, trim away all excess fabric leaving a 1/4" seam allowance outside of the outline stitch. **(PHOTO 1)**. This process is easily done using a rotary cutter and ruler. Simply line up the 1/4" mark with the sewing line and trim. Hint: It may be easier to cut with the back of the block showing since the color you chose to stitch the block outline with should blend in with the background fabric. **(PHOTO 2)**

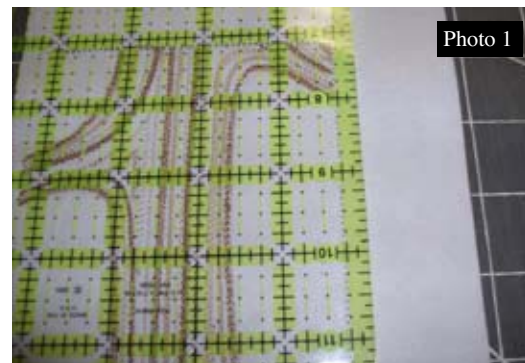


Photo 1

CREATING THE WALL HANGING (MAIN BODY)

1. After each block has been trimmed down, lay out the pieces near your machine so that it is easy to put the blocks together. Remember, there are 3 blocks across and 4 down. Use the above chart as reference for placement. **(PHOTO 3)**
2. Piece your wall hanging together using ¼ inch seam allowances. Start at the bottom row and work your way to the top row by flipping right sides together. **(PHOTO 4)**



Photo 2



Photo 3



Photo 4

3. Piece each row across first. Press the seams in their sewn position and then press them open as you go. **(PHOTO 5 and 6)**



Photo 5



Photo 6

4. Once all the horizontal rows are pieced together, it is time to connect the rows together. Make sure as you sew the rows together that your intersections line up between the rows. **(PHOTO 7)**



Photo 7

5. Continue until all rows are connected.
6. The next step is to stitch the borders together. Refer to the chart for placement. Begin by stitching the sides first. The cornerstones will be stitched on the top and bottom borders. Stitch the side borders to the main piece. **(PHOTO 8)**

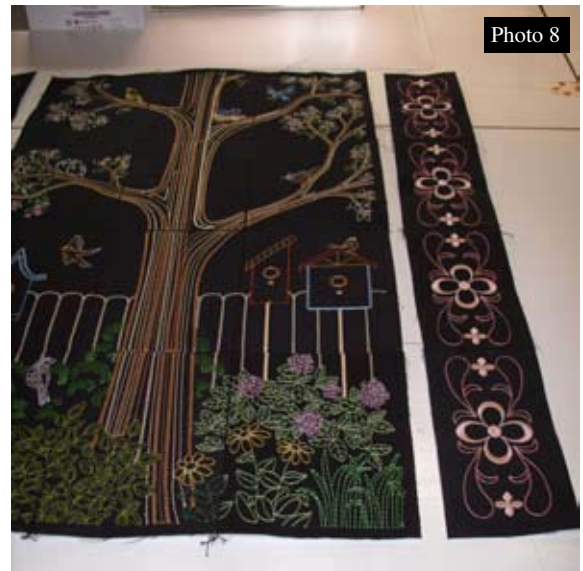


Photo 8

7. Stitch the top and bottom borders with the cornerstones together. Stitch the top and bottom borders to the main piece **(PHOTO 9)**



Photo 9

8. The next step is to cover all of the rows with fusible bias tape. This will be used to cover up any areas that maybe don't meet perfectly. Follow the manufactures instructions for pressing these strips onto your project. Cover the seams that go top to bottom first, followed by side to side and centering the tape over the seams. **(PHOTO 10)**



9. Trim away any excess strips so that the outer edges of the project are even.
10. Cut the backing fabric and batting to be at least 2 inches larger than the finished size of your project made above. Using the 505 spray, spray the batting and attach the backing.
11. Repeat step 10 for attaching the top.
12. In this next step, we will be sewing the bias strips in place. If you have an Edge Joining Foot, such as Bernina's #10, the blade on the foot will ride against the edge of the bias strip. Move your sewing machine's needle one position so that the stitching will ride closely to the edge of the strips. **(PHOTO 11)**



13. Stitch along both sides of each strip starting in the center of the project and working out to the edges.
14. Trim away the excess backing and batting and bind the project to finish.