

Note: Some designs in this collection may have been created using unique special stitches and/or techniques. To preserve design integrity when rescaling or rotating designs in your software, always rescale or rotate designs using the handles directly on-screen.



12386-01 Birdie 1 Appliqué
1.79 X 1.91 in.
45.47 X 48.51 mm
1,156 St.



12386-02 Flying Birdie Appliqué
2.11 X 1.82 in.
53.59 X 46.23 mm
1,988 St.



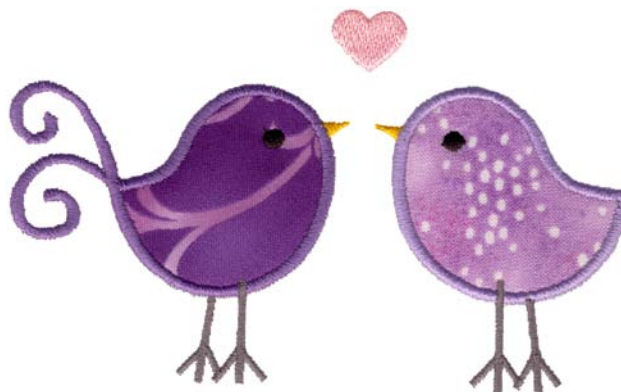
12386-03 Bounding Birdie Appliqué
2.77 X 2.10 in.
70.36 X 53.34 mm
2,527 St.



12386-04 Birdie on Branch Appliqué
4.16 X 3.65 in.
105.66 X 92.71 mm
6,409 St. ⚙



12386-05 Birdie 2 Appliqué
2.13 X 2.19 in.
54.10 X 55.63 mm
1,574 St.



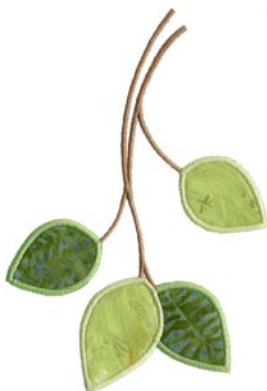
12386-06 Love Birdies Appliqué
4.93 X 3.01 in.
125.22 X 76.45 mm
4,501 St. ⚙



12386-07 Birdie 3 Appliqué
2.30 X 2.57 in.
58.42 X 65.28 mm
2,176 St. ⚙



12386-08 Fancy Birdie Appliqué
3.56 X 3.24 in.
90.42 X 82.30 mm
3,325 St.



12386-09 Branch Appliqué
4.18 X 6.06 in.
106.17 X 153.92 mm
4,977 St. ⚙ L

⚙ Design contains a loose fill.
⚙ Some white areas shown are not stitched.

L Design is larger than 5" (127 mm) in either direction.
S Design is smaller than 1.5" (38.1 mm) in either direction.

Listings below indicate color sample, stitching order and suggested thread color number in Isacord thread.

12386-01 Birdie 1 Appliqué

1. Beak	0800
2. Bird Appliqué Placement Stitch	3333
3. Bird Appliqué Cut Line & Tackdown	3333
4. Bird Appliqué Cover Stitch	3333
5. Legs	0112
6. Eye	0020

12386-02 Flying Birdie Appliqué

1. Beak	0800
2. Bird Appliqué Placement Stitch	3902
3. Bird Appliqué Cut Line & Tackdown	3902
4. Bird Appliqué Cover Stitch	3902
5. Legs	0112
6. Eye	0020

12386-03 Bounding Birdie Appliqué

1. Bird Appliqué Placement Stitch	0640
2. Bird Appliqué Cut Line & Tackdown	0640
3. Bird Appliqué Cover Stitch	0640
4. Legs	0112
5. Eyes	0020
6. Beak	0111

12386-04 Birdie on Branch Appliqué

1. Branches	1252
2. Bird Legs	0112
3. Light Green Leaves Appliqué Placement Stitch	6051
4. Light Green Leaves Appliqué Cut Line & Tackdown	6051
5. Light Green Leaves Appliqué Cover Stitch	6051
6. Dark Green Leaves Appliqué Placement Stitch	5610
7. Dark Green Leaves Appliqué Cut Line & Tackdown	5610
8. Dark Green Leaves Appliqué Cover Stitch	5610
9. Bird Appliqué Placement Stitch	1720
10. Bird Appliqué Cut Line & Tackdown	1720
11. Bird Appliqué Cover Stitch	1720
12. Beak	0800
13. Eyes	0020

12386-05 Birdie 2 Appliqué

1. Beak	0800
2. Bird Appliqué Placement Stitch	1730
3. Bird Appliqué Cut Line & Tackdown	1730
4. Bird Appliqué Cover Stitch	1730
5. Legs	0112
6. Eye	0020

12386-06 Love Birdies Appliqué

1. Beaks	0800
2. Right Bird Appliqué Placement Stitch	3130
3. Right Bird Appliqué Cut Line & Tackdown	3130
4. Right Bird Appliqué Cover Stitch	3130
5. Left Bird Appliqué Placement Stitch	2920
6. Left Bird Appliqué Cut Line & Tackdown	2920
7. Left Bird Appliqué Cover Stitch	2920
8. Legs	0112
9. Heart	2155
10. Eyes	0020

12386-07 Birdie 3 Appliqué

1. Beak	0111
2. Bird Appliqué Placement Stitch	3711
3. Bird Appliqué Cut Line & Tackdown	3711
4. Bird Appliqué Cover Stitch	3711
5. Legs	0112
6. Eyes	0020

12386-08 Fancy Birdie Appliqué

1. Beak	0800
2. Bird Appliqué Placement Stitch	2153
3. Bird Appliqué Cut Line & Tackdown	2153
4. Bird Appliqué Cover Stitch	2153
5. Legs	0112
6. Eye	0020

12386-09 Branch Appliqué

1. Branches	1252
2. Dark Green Leaf Appliqué Placement Stitch	5610
3. Dark Green Leaf Appliqué Cut Line & Tackdown	5610
4. Dark Green Leaf Appliqué Cover Stitch	5610
5. Light Green Leaf Appliqué Placement Stitch	6051
6. Light Green Leaf Appliqué Cut Line & Tackdown	6051
7. Light Green Leaf Appliqué Cover Stitch	6051

Note: Appliqué fabric not included.

Cut in Place Appliqué Instructions

1. Hoop your fabric and backing.
2. Sew the pattern/placement. **PHOTO 1**
3. Place a piece of appliqué fabric over the pattern/placement so that it is completely covered.
4. Sew the trim stitch/tackdown.
5. Carefully cut away the excess appliqué fabric. **PHOTO 2**
6. Sew the remainder of the design and repeat for any remaining pieces. **PHOTO 3**

