

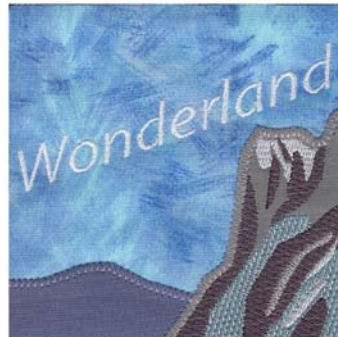


Finished size approx. 12" x 16"

Note: Some designs in this collection may have been created using unique special stitches and/or techniques. To preserve design integrity when rescaling or rotating designs in your software, always rescale or rotate designs using the handles directly on-screen.



**12434-01 Winter Tile 1**  
4.50 X 4.50 in.  
114.30 X 114.30 mm  
5,386 St.



**12434-02 Winter Tile 2**  
4.50 X 4.50 in.  
114.30 X 114.30 mm  
6,435 St.



**12434-03 Winter Tile 3**  
4.50 X 4.50 in.  
114.30 X 114.30 mm  
11,978 St.



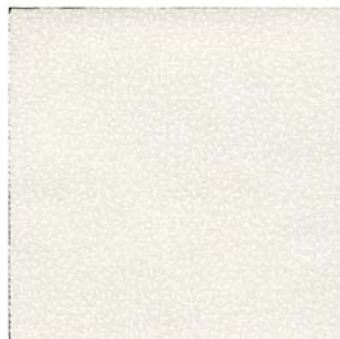
**12434-04 Winter Tile 4**  
4.50 X 4.50 in.  
114.30 X 114.30 mm  
16,086 St.



**12434-05 Winter Tile 5**  
4.50 X 4.50 in.  
114.30 X 114.30 mm  
9,694 St.



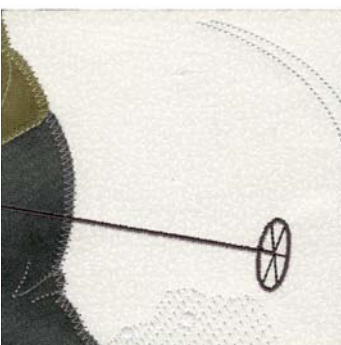
**12434-06 Winter Tile 6**  
4.50 X 4.50 in.  
114.30 X 114.30 mm  
7,662 St.



**12434-07 Winter Tile 7**  
4.50 X 4.50 in.  
114.30 X 114.30 mm  
765 St.



**12434-08 Winter Tile 8**  
4.50 X 4.50 in.  
114.30 X 114.30 mm  
4,247 St.



**12434-09 Winter Tile 9**  
4.50 X 4.50 in.  
114.30 X 114.30 mm  
3,080 St.



**12434-10 Winter Tile 10**  
4.50 X 4.50 in.  
114.30 X 114.30 mm  
1,258 St.



**12434-11 Winter Tile 11**  
4.50 X 4.50 in.  
114.30 X 114.30 mm  
7,915 St.



**12434-12 Winter Tile 12**  
4.50 X 4.50 in.  
114.30 X 114.30 mm  
10,956 St.

- ⌘ Design contains a loose fill.
- ⚙ Some white areas shown are not stitched.

- L Design is larger than 5" (127 mm) in either direction.
- S Design is smaller than 1.5" (38.1 mm) in either direction.

Note: Some designs in this collection may have been created using unique special stitches and/or techniques. To preserve design integrity when rescaling or rotating designs in your software, always rescale or rotate designs using the handles directly on-screen.



12434-13 Redwork Scene

4.86 X 6.73 in.

123.44 X 170.94 mm

9,414 St. **L**

- ⌘ Design contains a loose fill.
- ⚙ Some white areas shown are not stitched.

- L** Design is larger than 5" (127 mm) in either direction.
- S** Design is smaller than 1.5" (38.1 mm) in either direction.

Listings below indicate color sample, stitching order and suggested thread color number. Most numbers indicate Isacord thread. However, colors beginning with 20501 refer to YLI Fine Metallics, 7 refer to Yenmet Metallic, 8 refer to YLI Variations Variegated Thread and 9 refer to Isacord Multicolor Variegated.

### 12434-01 Winter Tile 1

1. Sky Placement Stitch	0015
2. Sky Tackdown	3962
3. Background Mountain Placement Stitch	3962
4. Background Mountain Tackdown	3853
5. Letters	0015
6. Seam Stitch	0020

### 12434-02 Winter Tile 2

1. Sky Placement Stitch	0015
2. Sky Tackdown	3962
3. Background Mountain Placement Stitch	3962
4. Background Mountain Tackdown	3853
5. Mountain Placement Stitch	3962
6. Mountain Tackdown	0131
7. Dark Grey Mountain Shading	0132
8. Light Grey Mountain Shading	0105
9. Blue Mountain Shading	3962
10. White Mountain Shading	0015
11. Letters	0015
12. Seam Stitch	0020

### 12434-03 Winter Tile 3

1. Sky Placement Stitch	0015
2. Sky Tackdown	3962
3. Mountain Placement Stitch	3962
4. Mountain Tackdown	0131
5. Dark Grey Mountain Shading	0132
6. Blue Mountain Shading	3962
7. Light Grey Mountain Shading	0105
8. White Mountain Shading	0015
9. Seam Stitch	0020

### 12434-04 Winter Tile 4

1. Mountain Placement Stitch	0015
2. Mountain Tackdown	0015
3. Snow Placement Stitch	0015
4. Snow Tackdown	0015
5. Trees	0465
6. Trees Shading	6133
7. Building Placement Stitch	0015
8. Building Tackdown & Shading	0822
9. Windows	0520
10. Door	0842
11. Window Outlines	1565
12. Dark Roof Shading	1876
13. Light Roof Shading & Awnings	0853
14. Awning Shading	1161
15. Roof Snow Placement Stitch	3853
16. Roof Snow Tackdown & Ground Snow	0015
17. Seam Stitch	0020

### 12434-05 Winter Tile 5

1. Background Mountain Placement Stitch	0015
2. Background Mountain Tackdown	3853
3. Mountain Placement Stitch	3853
4. Mountain Tackdown	0131
5. Dark Grey Mountain Shading	0132
6. Light Grey Mountain Shading	0105
7. Blue Mountain Shading	3962
8. Snow Placement Stitch	0131
9. Snow Tackdown & Shading	0015
10. Coat Placement Stitch	0015
11. Coat Tackdown & Shading	0453
12. Skin	1140
13. Skin Shading	0853
14. Hat	0853
15. Skin Outlines	1161
16. Hat Outlines	1161
17. Tree	0465
18. Tree Shading	6133
19. Lips	1755
20. Seam Stitch	0020

### 12434-06 Winter Tile 6

1. Mountain Placement Stitch	0015
2. Mountain Tackdown	0131
3. Dark Grey Mountain Shading	0132
4. Light Grey Mountain Shading	0105
5. Blue Mountain Shading	3962
6. Snow Placement Stitch	0131
7. Snow Tackdown	0015
8. Seam Stitch	0020

### 12434-07 Winter Tile 7

1. Snow Placement Stitch	0015
2. Snow Tackdown	0015
3. Seam Stitch	0020

### 12434-08 Winter Tile 8

1. Snow Placement Stitch	0015
2. Snow Tackdown	0015
3. Pants Placement Stitch	0015
4. Pants Tackdown	0108
5. Poles	4174
6. Gloves	0853
7. Coat Placement Stitch	0015
8. Coat Tackdown & Shading	0453
9. Seam Stitch	0020

### 12434-09 Winter Tile 9

1. Snow Placement Stitch	0015
2. Snow Tackdown	4071
3. Pants Placement Stitch	0015
4. Pants Tackdown	0108
5. Coat Placement Stitch	0015
6. Coat Tackdown	0453
7. Pole	4174
8. Snow Splatter	0015
9. Seam Stitch	0020

### 12434-10 Winter Tile 10

1. Snow Placement Stitch	0015
2. Snow Tackdown	0015
3. Ski	1154
4. Seam Stitch	0020

### 12434-11 Winter Tile 11

1. Snow Placement Stitch	0015
2. Snow Tackdown	0015
3. Skis	1154
4. Pole	4174
5. Snow	4071
6. Boot	1876
7. Snow Splatter	0015
8. Pants Placement Stitch	0015
9. Pants Tackdown	0108
10. Seam Stitch	0020

### 12434-12 Winter Tile 12

1. Snow Placement Stitch	0015
2. Snow Tackdown	0015
3. Skis	1154
4. Boot	1876
5. Snow	4071
6. Snow Splatter	0015
7. Pants Placement Stitch	0015
8. Pants Tackdown	0108
9. Seam Stitch	0020

### 12434-13 Redwork Scene

1. Single Color Design	1904
------------------------	------

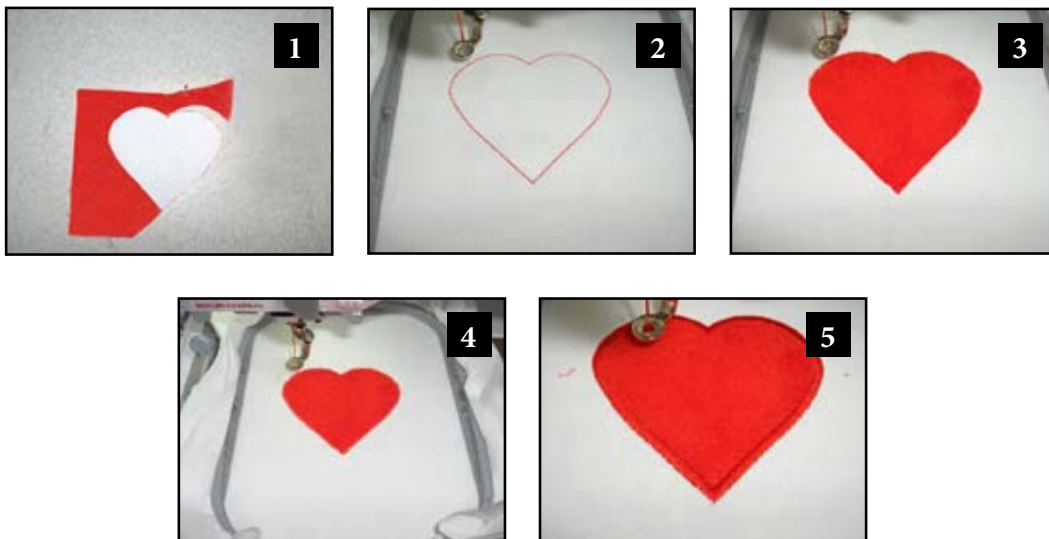
**Note:** Appliqué fabric not included. Some appliqué edges in this collection are covered with stitches that may not completely cover the fabric edges. This is done intentionally to create the beautiful end result.

## Pre-Cut Appliqué Instructions

1. Print out the necessary pages from the PDF of the appliqué pattern(s).
2. Mark the right side of the pattern pieces so you'll know which direction to lay the pattern on the fabric.
3. Lightly spray the wrong side of the pattern pieces with temporary adhesive spray and allow it to set for a few minutes.
4. Place the pattern pieces on the right side of the fabric and carefully cut them out. **PHOTO 1**
5. Sew the placement stitch on your hooped fabric. **PHOTO 2**
6. With the paper still stuck to the right side of the appliqué fabric, spray the wrong side of the fabric with temporary spray adhesive.
7. Place the fabric inside the sewing placement stitch so that it matches the stitching line then remove the paper pattern. **PHOTO 3**
8. Sew the tackdown. **PHOTO 4**
9. Sew the remainder of the design and repeat for any remaining pieces. **PHOTO 5**

**NOTE:** The patterns are sized for the designs as they were made. If you resize the design, you will need to resize the pattern the same amount. You can print out the pattern at the normal size then copy it on a copy machine at the changed size, i.e. resize the designs to 80%, resize the printed pattern to 80%.

**TIP:** When Printing the patterns, make sure that the “Fit to page” option is **UNCHECKED** in the Print Dialog Box. If this option is checked the printed patterns will not be actual size.



### A Vintage Winter Wall Hanging

#### Supplies:

- OESD Signature Pack #12434 A Vintage Winter
- Polyester Embroidery Thread
- Bobbin Thread
- Temporary Adhesive Spray
- Medium Weight Tear-Away Stabilizer
- 2 yards of fabric (this will include the blocks, backing and binding)
- Quilt Batting 14"x 18"
- Appliqué fabric for each piece. See the appliqué patterns included in this document for reference.

#### Optional:

- Stitch Witchery Fusible Bonding Web ¼" wide roll (widely available in 20yd roll)
- 3 yards satin ribbon ¼" wide

#### Embroidery:

1. Embroider one of each design file 12434-01 through 12434-12 for the wall hanging using two layers of medium weight tear-away stabilizer in each hooping. Be sure to use temporary adhesive spray to adhere all layers of stabilizer and fabric together for best stitch results.
2. Refer to the Pre-Cut Appliqué Instructions for directions to apply the appliqué areas.
3. The last color stop that will stitch in each of these designs is a border that is referred to on the thread chart as "Seam Stitch". This stitch is very important in the process of assembling the wall hanging. It is vital that it is not skipped when embroidering. Stitch this in the same thread color as your background fabric. *NOTE: In our sample pictures we stitched our "Seam Stitches" in black to ensure they would show in photographs.*
4. Once the embroidery process is complete, remove excess stabilizer then trim away excess fabric by cutting ½" outside the "Seam Stitch". This process is easily done using a rotary cutter and ruler. *NOTE: It may be easier to cut with the back of the block showing since the "Seam Stitch" was stitched in the same color as your background fabric.*

(Photo 01)

#### Construction:

1. After each block has been trimmed, lay out the pieces near your machine so that it is easy to put the blocks together. Refer to **Diagram A** (On next page).
2. Stitch the horizontal rows together by laying the first two pieces together with right sides together. Cut edges should match, but more importantly, the "Seam Stitch" on both pieces must match. Stitch the pieces together by straight stitching just to the inside of the "Seam Stitch". (Photo 02)



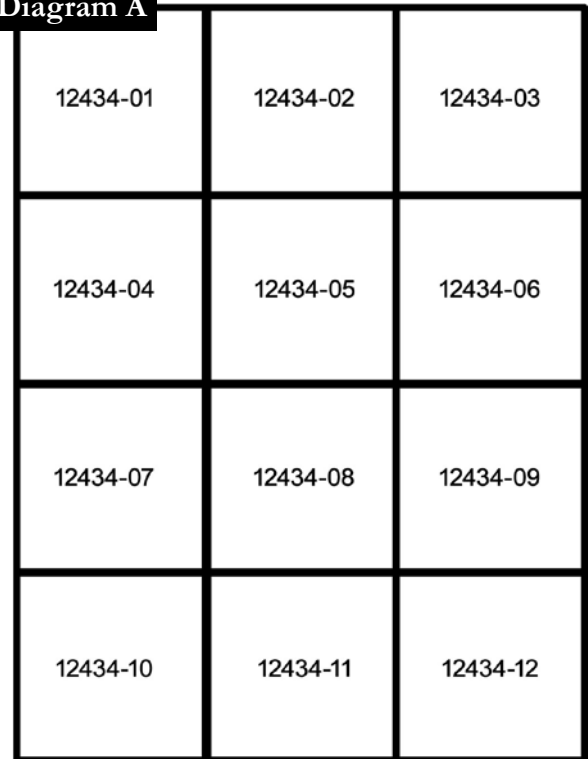
Photo 1



Photo 2

3. Attach the third square to the first two squares in the same fashion to complete your first row. **(Photo 03)**
4. Press seams open.
5. Referring to **Diagram A**, repeat for rows two through four.
6. When step five is complete you will have four stitched rows. **(Photo 04)**
7. Stitch the four rows together in the same manner to complete the front of the wall hanging. Make sure as you sew that your intersections line up between the rows and that the “Seam Stitch” stays matched. **(Photo 05)**
8. Cut backing fabric and batting to be at least 2 inches larger than the finished size of your project. Using temporary adhesive spray, spray the batting and adhere it to the wrong side of the backing fabric.
9. Using temporary adhesive spray, spray the batting and adhere it to the wrong side of the completed wall hanging. This will create a “quilters’ sandwich”.
10. Quilt as desired. In our sample we simply stitched in the ditch  
*NOTE: Steps 11-13 are optional, follow these steps if you would like to add ribbon to cover the seams of the wall hanging (this can be useful if your stitching ended up a bit crooked). If you do not want to add ribbon, simply skip to step 14 to finish the wall hanging.*
11. Cover all of the seams with satin ribbon. Cut ribbon into strips approximately 1” longer than the seam you are covering. Spray one side of ribbon with temporary spray adhesive. Adhere a layer of Stitch Witchery to each ribbon strip. Be careful not to stretch the Stitch Witchery as this will cause your ribbons to draw up and not lay flat. Lay ribbon in place, making sure each is straight, and iron to permanently fuse ribbon in place. Since Stitch Witchery is permanent, stitching ribbons in place is not necessary.
12. Place ribbons in the following order:  
 Place the two vertical ribbons first followed by the three horizontal ribbons.
13. Trim away any excess strips of ribbon so that the outer edges of the project are even.
14. Trim away the excess backing fabric and batting then bind the wall hanging using your favorite binding method.

**Diagram A**



**Photo 3**



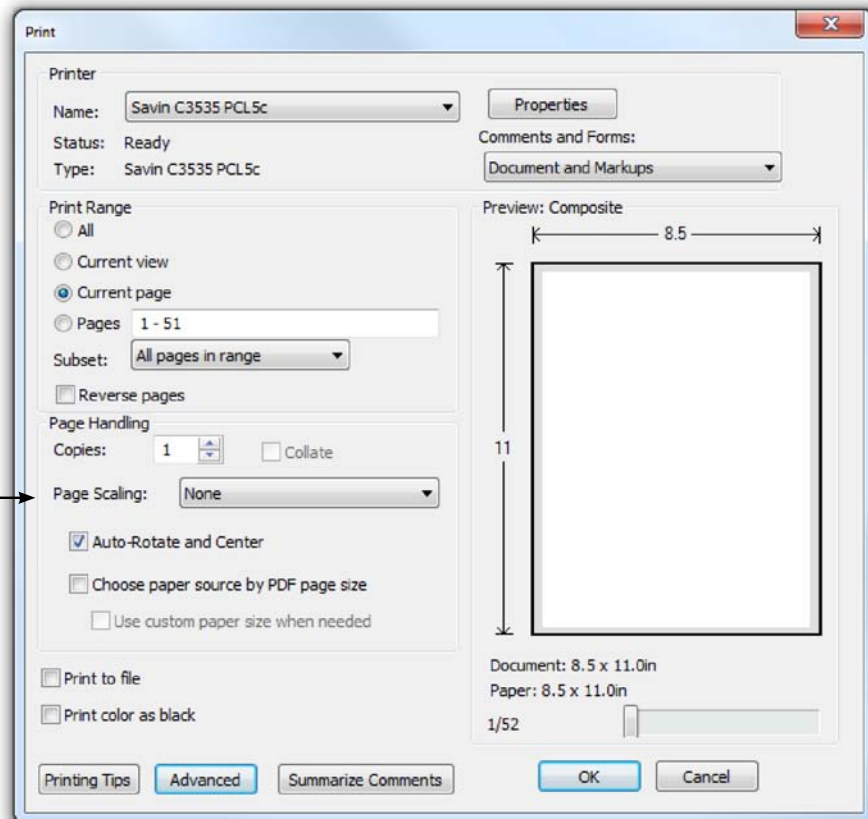
**Photo 4**



**Photo 5**

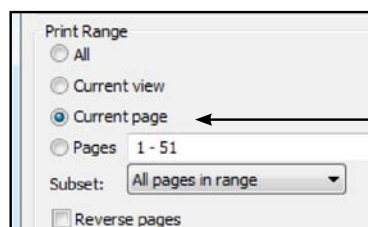
## ATTENTION

When printing this document, any page scaling or page fitting options in your print dialog box must be turned OFF or set to NONE so that your files will print out at their actual size. Images not printed at actual size will not function as intended.

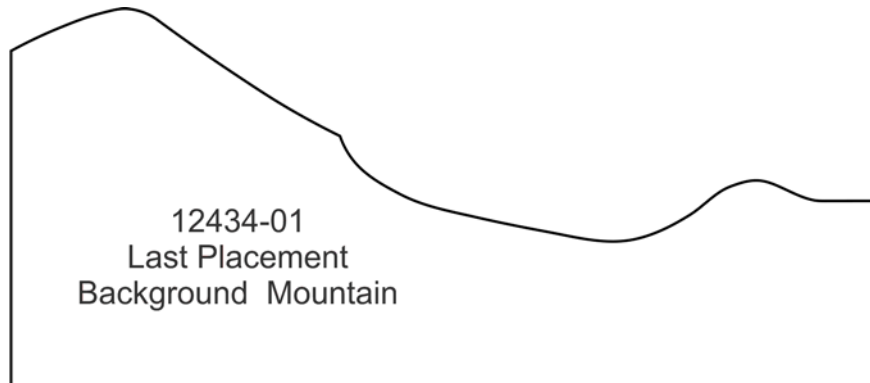
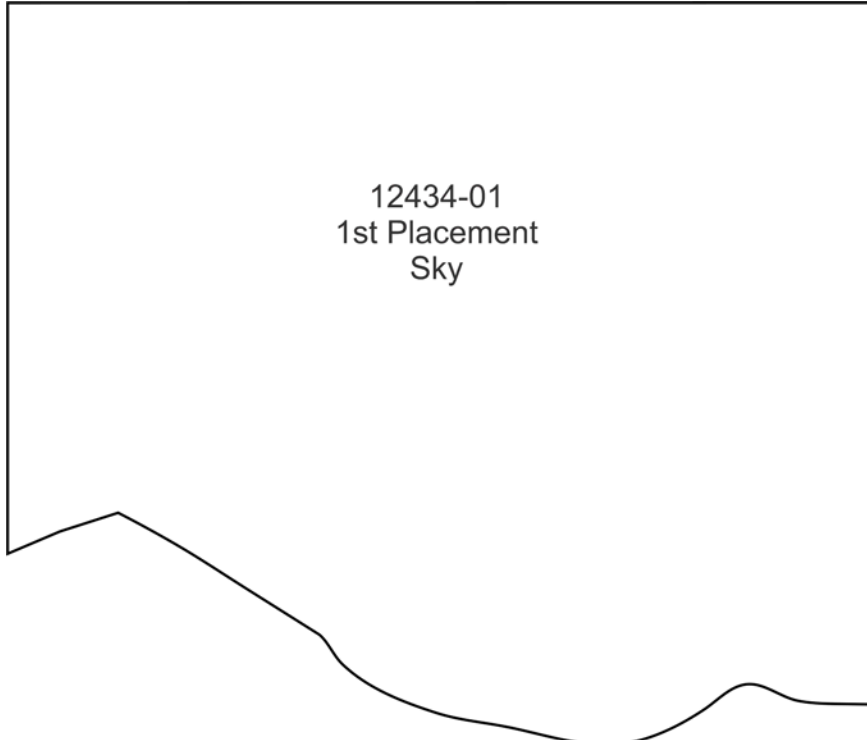


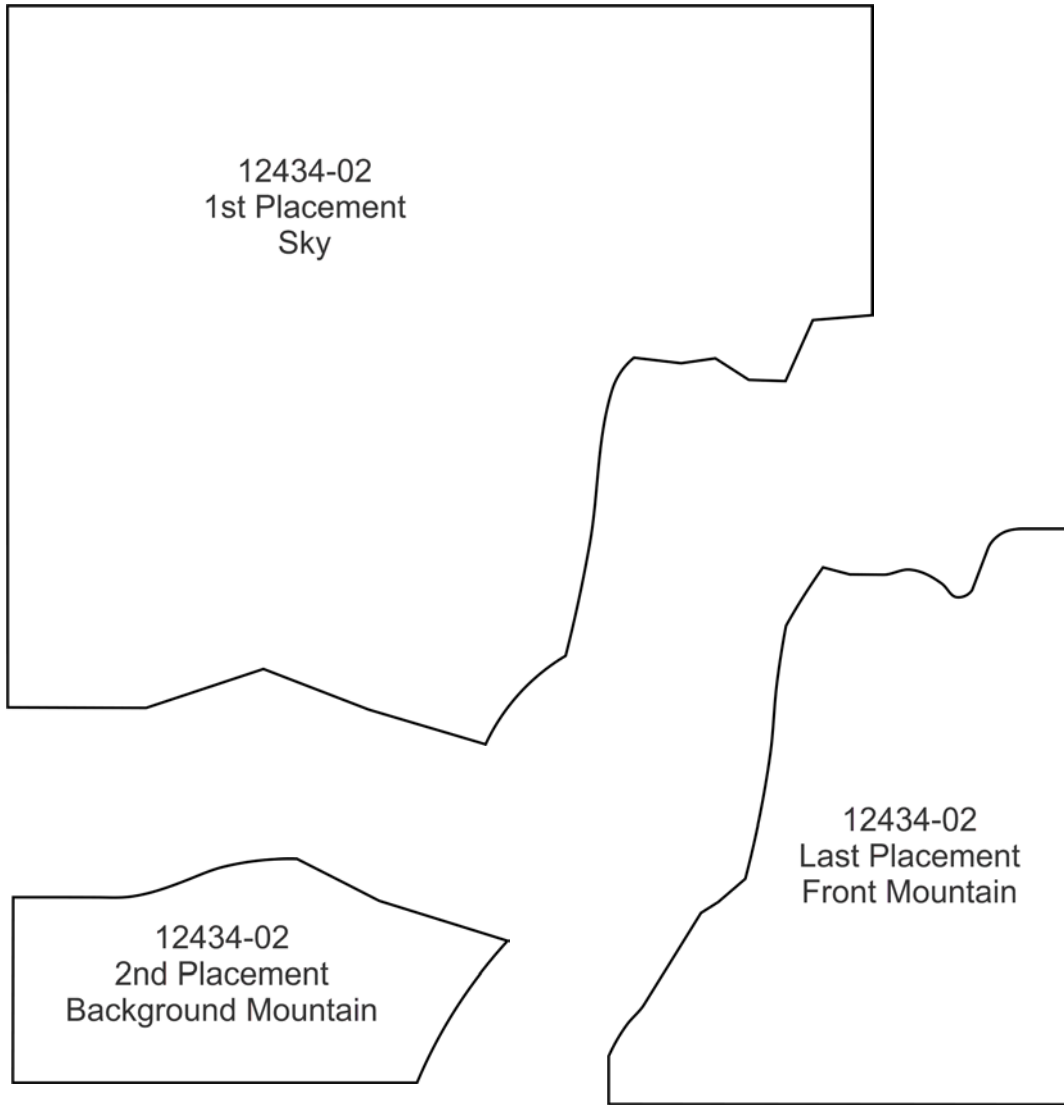
## TO SAVE PAPER

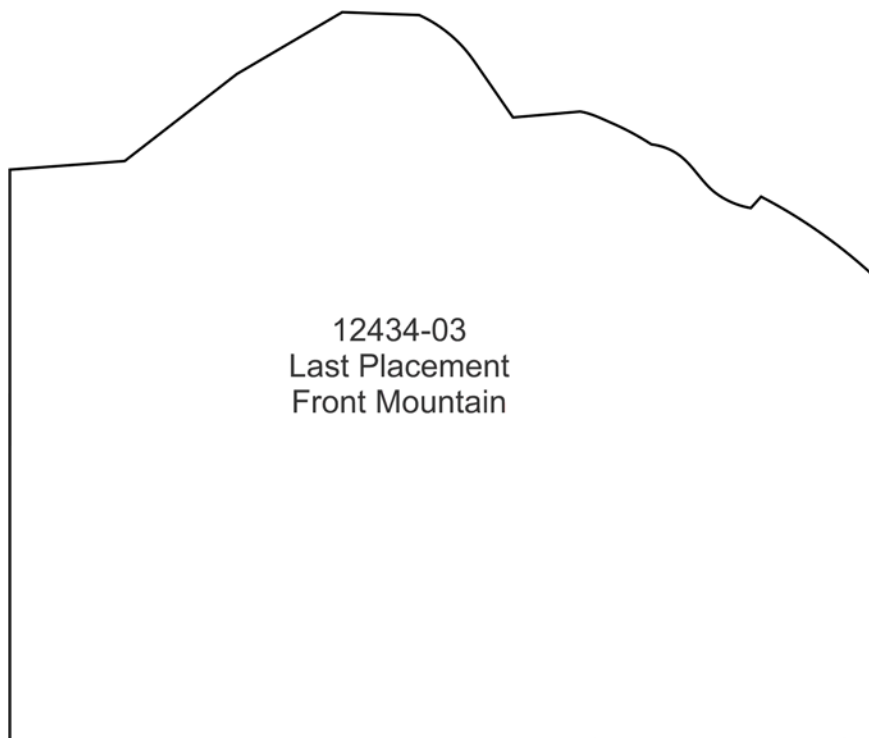
Only print the desired image by navigating to the image's page, go to File > Print and select "Current page" in the print dialog box. Repeat for each desired image.

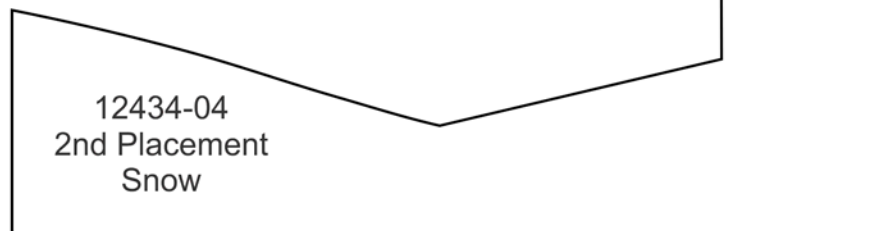
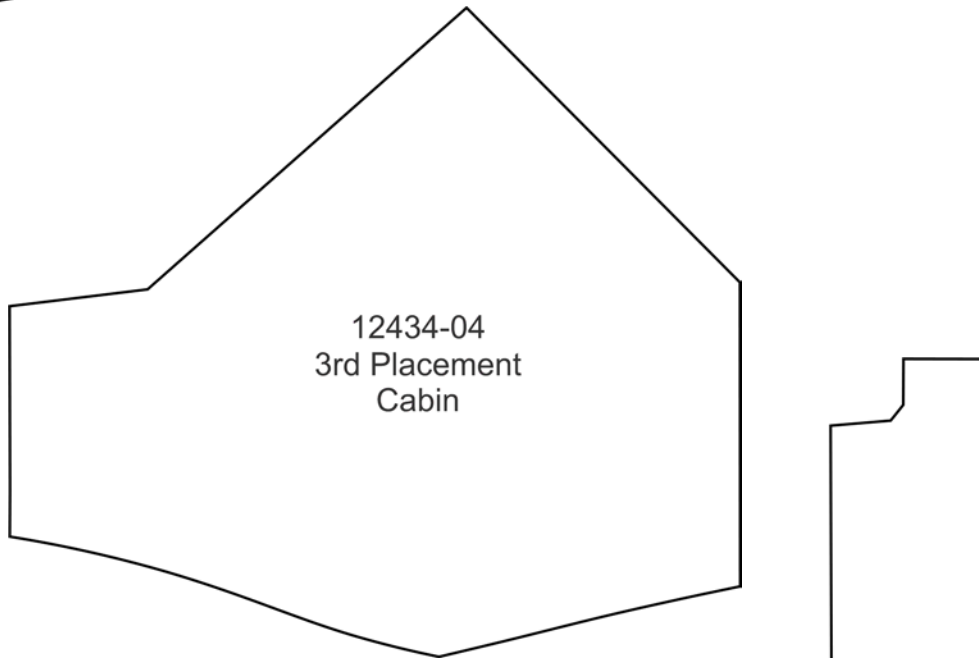
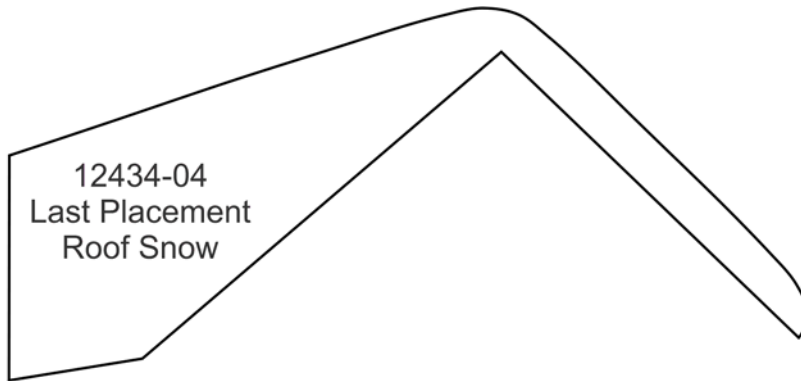
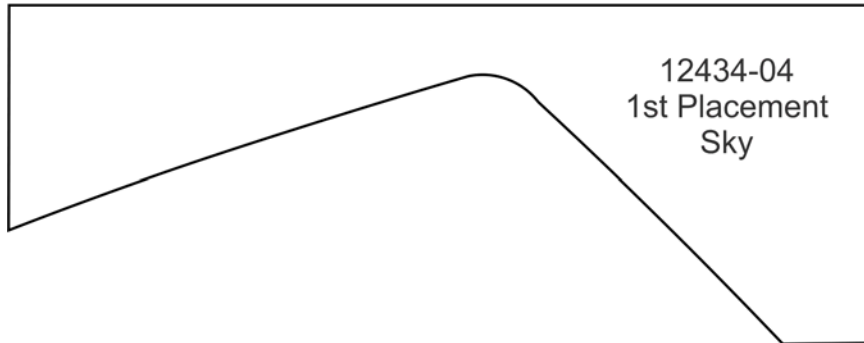


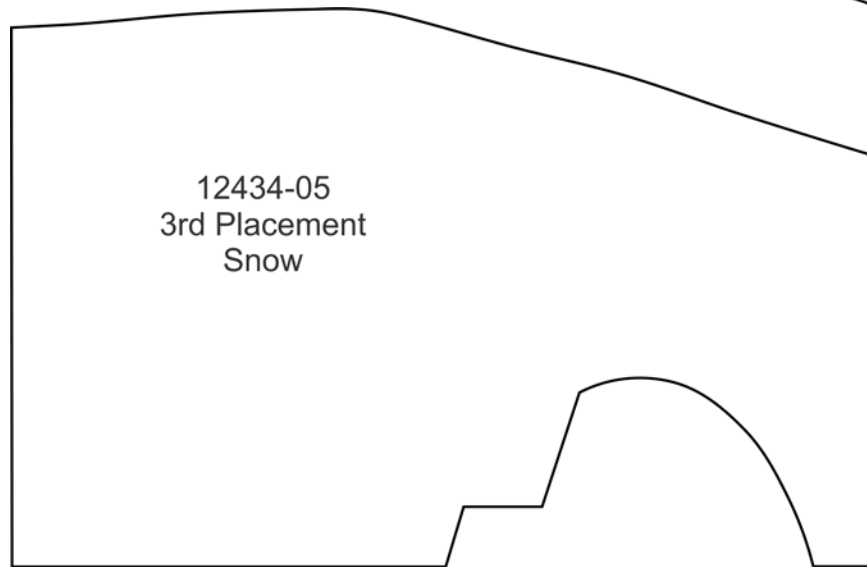
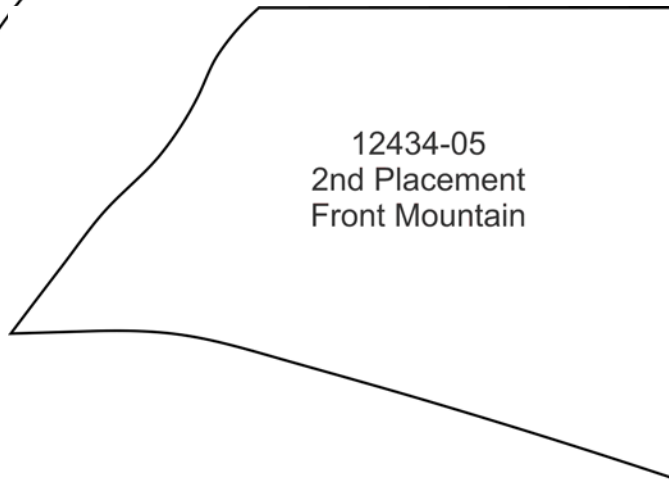
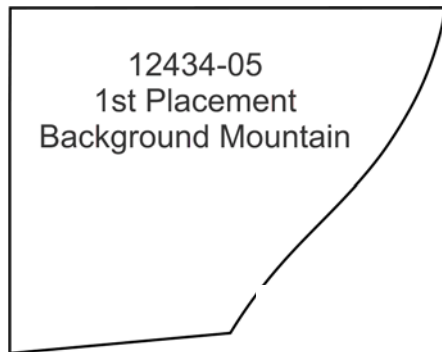








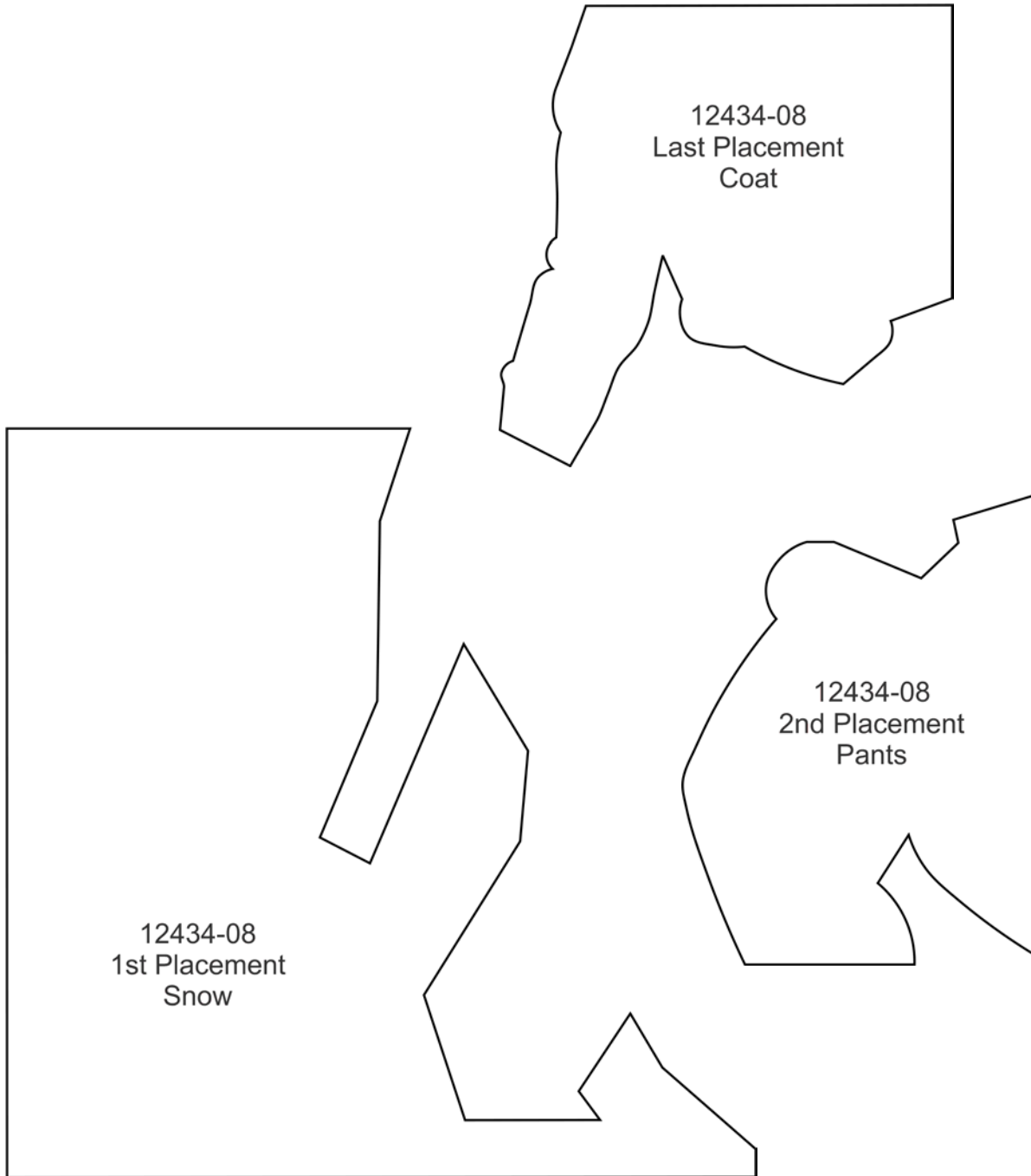




12434-06  
1st Placement  
Front Mountain

12434-06  
Last Placement  
Snow

12434-07  
1st Placement  
Snow

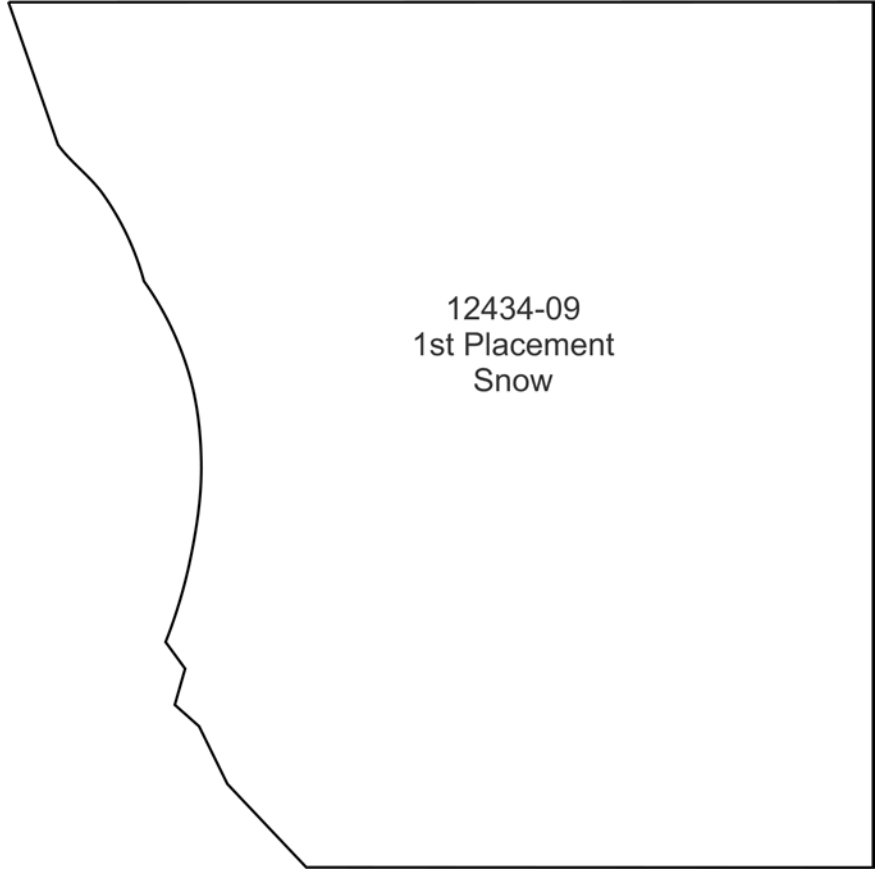




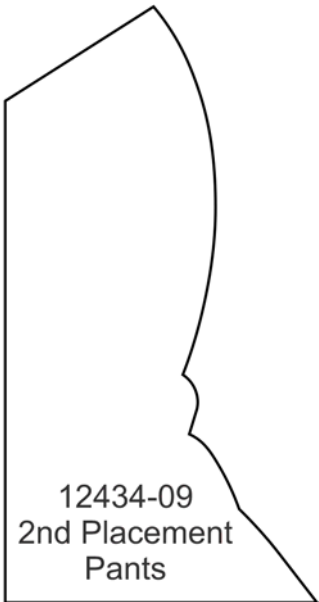
12434-09  
Last Placement  
Coat



12434-09  
1st Placement  
Snow

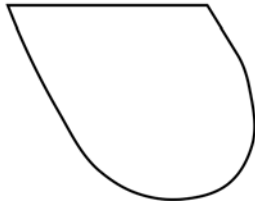


12434-09  
2nd Placement  
Pants

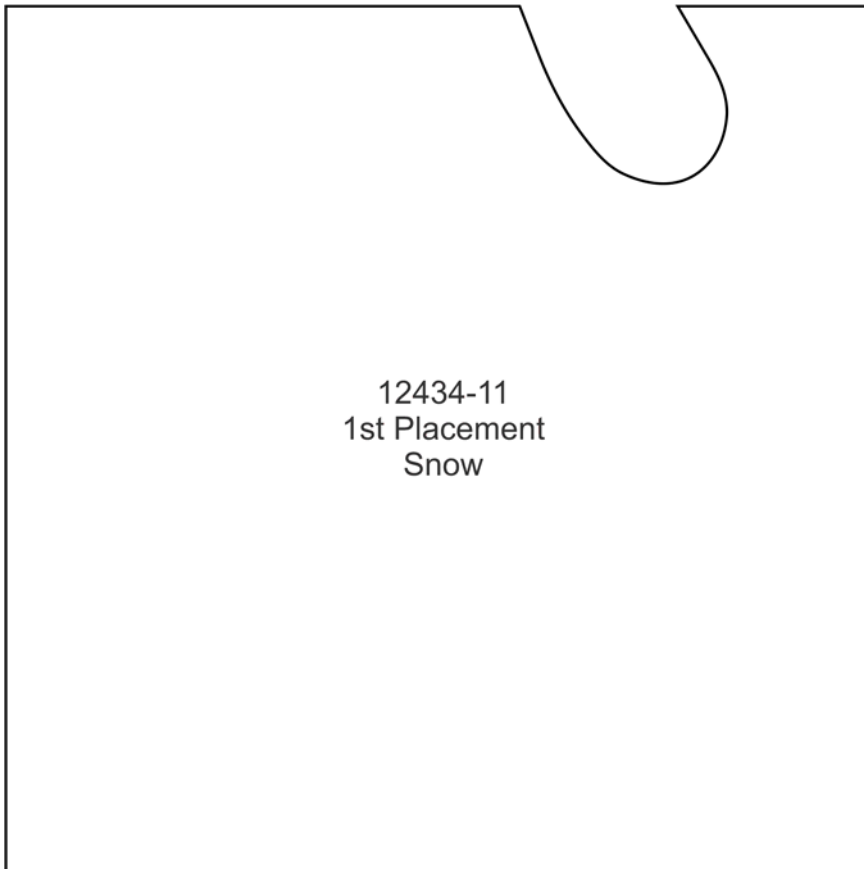


12434-10  
1st Placement  
Snow

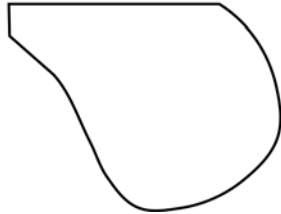
12434-11  
Last Placement  
Pants



12434-11  
1st Placement  
Snow



12434-12  
Last Placement  
Pants



12434-12  
1st Placement  
Snow

