

Note: Some designs in this collection may have been created using unique special stitches and/or techniques. To preserve design integrity when rescaling or rotating designs in your software, always rescale or rotate designs using the handles directly on-screen.



12444-01 Rose Medallion
4.84 X 5.24 in.
122.94 X 133.10 mm
18,715 St. **L**



12444-02 Rose Centerpiece
3.78 X 4.08 in.
96.01 X 103.63 mm
9,324 St.



12444-03 Rose Leaves Medallion
4.70 X 4.92 in.
119.38 X 124.97 mm
16,569 St.



12444-04 Rose Leaves Centerpiece
3.53 X 4.61 in.
89.66 X 117.09 mm
10,548 St.



12444-05 Rose Appliqué
4.77 X 5.79 in.
121.16 X 147.07 mm
18,340 St. **L**



12444-06 Roses Bottom Arch
5.79 X 2.37 in.
147.07 X 60.20 mm
6,336 St. **L**



12444-07 Top Arch
4.71 X 2.10 in.
119.63 X 53.34 mm
5,475 St.



12444-08 Damask Rose
4.32 X 5.53 in.
109.73 X 140.46 mm
11,203 St. **L**



12444-09 Rose
2.33 X 3.77 in.
59.18 X 95.76 mm
4,932 St.



12444-10 Rose Buds Vine
3.21 X 5.57 in.
81.53 X 141.48 mm
9,007 St. **L**



12444-11 Rose Accent
3.04 X 3.10 in.
77.22 X 78.74 mm
5,549 St.



12444-12 Rose Leaves Branch
2.41 X 4.44 in.
61.21 X 112.78 mm
5,955 St.

⌘ Design contains a loose fill.
⚙ Some white areas shown are not stitched.

L Design is larger than 5" (127 mm) in either direction.
S Design is smaller than 1.5" (38.1 mm) in either direction.

Note: Some designs in this collection may have been created using unique special stitches and/or techniques. To preserve design integrity when rescaling or rotating designs in your software, always rescale or rotate designs using the handles directly on-screen.



12444-13 Rose Leaves Accent
2.69 X 2.40 in.
68.33 X 60.96 mm
4,682 St.



12444-14 Roses Arch Border
6.16 X 2.42 in.
156.46 X 61.47 mm
10,922 St. **L**



12444-15 Rose Corner
3.60 X 3.48 in.
91.44 X 88.39 mm
7,285 St.



12444-16 Little Rose Border
5.45 X .91 in.
138.43 X 23.11 mm
4,458 St. **L S**



12444-17 Little Rose Corner
3.21 X 3.23 in.
81.53 X 82.04 mm
4,897 St.



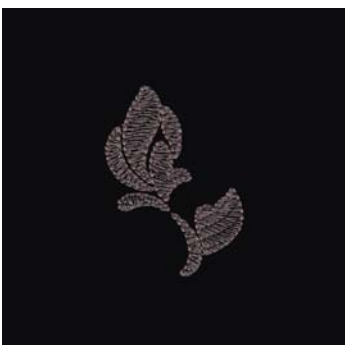
12444-18 Large Rose Border
5.91 X 1.64 in.
150.11 X 41.66 mm
7,193 St. **L**



12444-19 Large Rose Leaves Corner
3.03 X 3.03 in.
76.96 X 76.96 mm
6,671 St.



12444-20 Rose Mini
1.70 X 1.68 in.
43.18 X 42.67 mm
1,927 St.



12444-21 Rosebud Mini
1.30 X 1.85 in.
33.02 X 46.99 mm
1,458 St. **S**



12444-22 Rose Leaf Mini
1.60 X 1.37 in.
40.64 X 34.80 mm
1,398 St. **S**

⌘ Design contains a loose fill.
⚙ Some white areas shown are not stitched.

L Design is larger than 5" (127 mm) in either direction.
S Design is smaller than 1.5" (38.1 mm) in either direction.

Listings below indicate color sample, stitching order and suggested thread color number. Most numbers indicate Isacord thread. However, colors beginning with 20501 refer to YLI Fine Metallics, 7 refer to Yenmet Metallic, 8 refer to YLI Variations Variegated Thread and 9 refer to Isacord Multicolor Variegated.

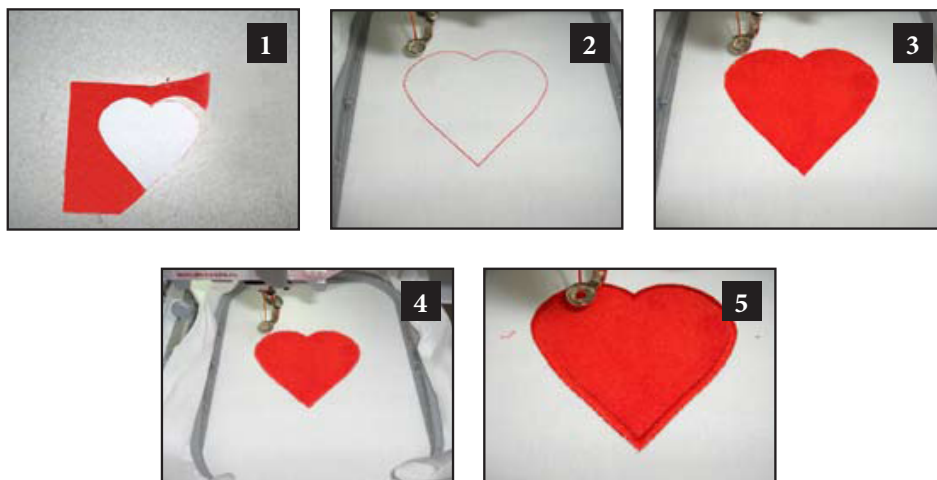
12444-01 Rose Medallion 1. White Details0101 2. Grey Details.....0111	12444-07 Top Arch 1. Single Color Design.....0111	12444-15 Rose Corner 1. Single Color Design.....0101
12444-02 Rose Centerpiece 1. White Details0101 2. Grey Details.....0111	12444-08 Damask Rose 1. White Details0101 2. Grey Details.....0111	12444-16 Little Rose Border 1. Single Color Design.....0101
12444-03 Rose Leaves Medallion 1. White Details0101 2. Grey Details.....0111	12444-09 Rose 1. Single Color Design.....0101	12444-17 Little Rose Corner 1. Single Color Design.....0101
12444-04 Rose Leaves Centerpiece 1. White Details0101 2. Grey Details.....0111	12444-10 Rose Buds Vine 1. White Details0101 2. Grey Details.....0111	12444-18 Large Rose Border 1. Single Color Design.....0111
12444-05 Rose Appliqué 1. Placement Stitch.....0020 2. Cut Line & Tackdown.....0020 3. Grey Details.....0111 4. White Details0101	12444-11 Rose Accent 1. Single Color Design.....0111	12444-19 Large Rose Leaves Corner 1. Single Color Design.....0111
12444-06 Roses Bottom Arch 1. Single Color Design.....0111	12444-12 Rose Leaves Branch 1. Single Color Design.....0111	12444-20 Rose Mini 1. Single Color Design.....0111
	12444-13 Rose Leaves Accent 1. Single Color Design.....0111	12444-21 Rosebud Mini 1. Single Color Design.....0111
	12444-14 Roses Arch Border 1. Single Color Design.....0101	12444-22 Rose Leaf Mini 1. Single Color Design.....0111

Pre-Cut Appliqué Instructions

1. Print out the necessary pages from the PDF of the appliqué pattern(s).
2. Mark the right side of the pattern pieces so you'll know which direction to lay the pattern on the fabric.
3. Lightly spray the wrong side of the pattern pieces with temporary adhesive spray and allow it to set for a few minutes.
4. Place the pattern pieces on the right side of the fabric and carefully cut them out. **PHOTO 1**
5. Sew the placement stitch on your hooped fabric. **PHOTO 2**
6. With the paper still stuck to the right side of the appliqué fabric, spray the wrong side of the fabric with temporary spray adhesive.
7. Place the fabric inside the sewing placement stitch so that it matches the stitching line, and then remove the paper pattern. **PHOTO 3**
8. Sew the tackdown. **PHOTO 4**
9. Sew the remainder of the design and repeat for any remaining pieces. **PHOTO 5**

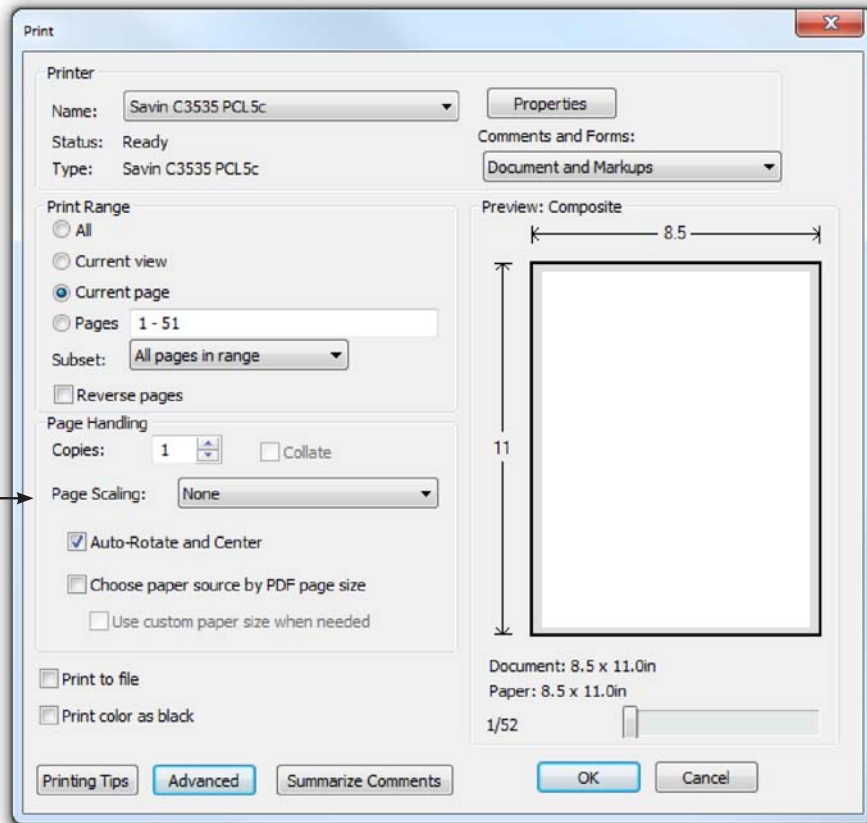
NOTE: The patterns are sized for the designs as they were made. If you resize the design, you will need to resize the pattern the same amount. You can print out the pattern at the normal size then copy it on a copy machine at the changed size. For example, resize the designs to 80%, resize the printed pattern to 80%.

TIP: When Printing the patterns, make sure that the "Fit to page" option is **UNCHECKED** in the Print Dialog Box. If this option is checked the printed patterns will not be actual size.



ATTENTION

When printing this document, any page scaling or page fitting options in your print dialog box must be turned OFF or set to NONE so that your files will print out at their actual size. Images not printed at actual size will not function as intended.



TO SAVE PAPER

Only print the desired image by navigating to the image's page, go to File > Print and select "Current page" in the print dialog box. Repeat for each desired image.

