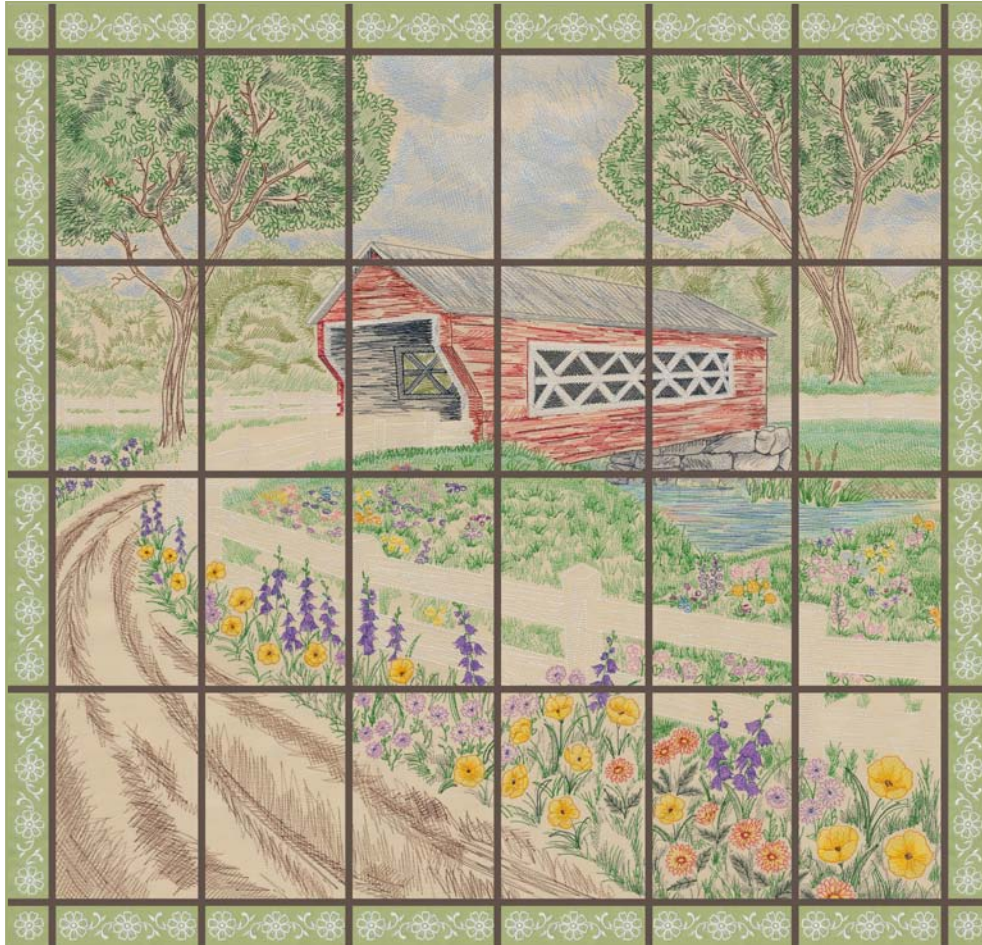



Instructions included to assemble wall hanging using the designs in this pack!




Note: Some designs in this collection may have been created using unique special stitches and/or techniques. To preserve design integrity when rescaling or rotating designs in your software, always rescale or rotate designs using the handles directly on-screen.




12456-01 Tile 1
4.76 X 6.69 in.
120.90 X 169.93 mm
16,391 St.  L




12456-02 Tile 2
4.74 X 6.67 in.
120.40 X 169.42 mm
19,506 St.  L



12456-03 Tile 3
4.72 X 6.65 in.
119.89 X 168.91 mm
13,108 St.  L



12456-04 Tile 4
4.69 X 6.70 in.
119.13 X 170.18 mm
13,359 St.  L

Note: Some designs in this collection may have been created using unique special stitches and/or techniques. To preserve design integrity when rescaling or rotating designs in your software, always rescale or rotate designs using the handles directly on-screen.



12456-05 Tile 5
4.70 X 6.65 in.
119.38 X 168.91 mm
16,604 St. **⌘ L**



12456-06 Tile 6
4.78 X 6.69 in.
121.41 X 169.93 mm
15,163 St. **⌘ L**



12456-07 Tile 7
4.75 X 6.69 in.
120.65 X 169.93 mm
13,353 St. **⌘ ⚙ L**



12456-08 Tile 8
4.71 X 6.69 in.
119.63 X 169.93 mm
13,713 St. **⌘ ⚙ L**



12456-09 Tile 9
4.77 X 6.76 in.
121.16 X 171.7 mm
17,727 St. **⌘ ⚙ L**



12456-10 Tile 10
4.84 X 6.70 in.
122.94 X 170.18 mm
18,234 St. **⌘ L**



12456-11 Tile 11
4.75 X 6.68 in.
120.65 X 169.67 mm
17,198 St. **⌘ L**



12456-12 Tile 12
4.73 X 6.73 in.
120.14 X 170.94 mm
14,641 St. **⌘ ⚙ L**



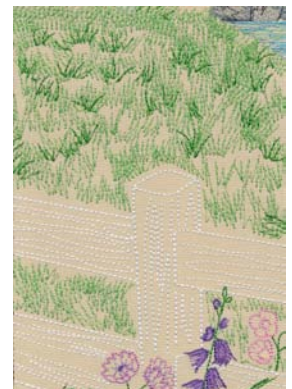
12456-13 Tile 13
4.76 X 6.70 in.
120.90 X 170.18 mm
10,247 St. **⌘ ⚙ L**



12456-14 Tile 14
4.70 X 6.68 in.
119.38 X 169.67 mm
19,399 St. **⌘ ⚙ L**



12456-15 Tile 15
4.76 X 6.67 in.
120.90 X 169.42 mm
18,023 St. **⌘ ⚙ L**



12456-16 Tile 16
4.73 X 6.73 in.
120.14 X 170.94 mm
14,293 St. **⌘ ⚙ L**

⌘ Design contains a loose fill.
⚙ Some white areas shown are not stitched.

L Design is larger than 5" (127 mm) in either direction.
S Design is smaller than 1.5" (38.1 mm) in either direction.

Note: Some designs in this collection may have been created using unique special stitches and/or techniques. To preserve design integrity when rescaling or rotating designs in your software, always rescale or rotate designs using the handles directly on-screen.



12456-17 Tile 17
4.75 X 6.72 in.
120.65 X 170.69 mm
18,843 St. **⌘** **⊗** **L**



12456-18 Tile 18
4.75 X 6.71 in.
120.65 X 170.43 mm
17,030 St. **⌘** **⊗** **L**



12456-19 Tile 19
4.78 X 6.72 in.
121.41 X 170.69 mm
6,177 St. **⌘** **L**



12456-20 Tile 20
4.70 X 6.83 in.
119.38 X 173.48 mm
6,304 St. **⌘** **L**



12456-21 Tile 21
4.71 X 6.67 in.
119.63 X 169.42 mm
11,802 St. **⌘** **⊗** **L**



12456-22 Tile 22
4.73 X 6.68 in.
120.14 X 169.67 mm
13,714 St. **⌘** **⊗** **L**



12456-23 Tile 23
4.70 X 6.69 in.
119.38 X 169.93 mm
19,659 St. **⌘** **⊗** **L**



12456-24 Tile 24
4.66 X 6.68 in.
118.36 X 169.67 mm
14,317 St. **⌘** **⊗** **L**



12456-25 Corner
1.50 X 1.50 in.
38.10 X 38.10 mm
1,305 St. **⊗**



12456-26 Long Border
1.50 X 6.50 in.
38.10 X 165.10 mm
6,751 St. **⊗** **L**



12456-27 Short Border
1.50 X 4.50 in.
38.10 X 114.30 mm
4,917 St. **⊗**

⌘ Design contains a loose fill.
⊗ Some white areas shown are not stitched.

L Design is larger than 5" (127 mm) in either direction.
S Design is smaller than 1.5" (38.1 mm) in either direction.

Listings below indicate color sample, stitching order and suggested thread color number. "I" refers to Isacord Thread and "T" refers to Timeless. Colors beginning with 20501 refer to YLI Fine Metallics, 7 refer to Yenmet Metallic, 8 refer to YLI Variations Variegated Thread and 9 refer to Isacord Multicolor Variegated.

		I	T			I	T			I	T
12456-17 Tile 17											
	1. Light Grey Details	4073	28101		1. Light Brown Road	0853	26115		1. Fence	0015	28154
	2. Dark Grey Details	4174	28148		2. Dark Brown Road.....	1346	26136		2. Light Green Grass.....	5610	18136
	3. White Fence & Details	0015	28154		3. Dark Blue Green Grass.....	0463	18101		3. Dark Blue Green Grass.....	0463	18101
	4. Blue Green Grass & Water	5050	14175		4. Dark Green Grass & Stems	5722	18151		4. Dark Green Grass & Stems	5722	18151
	5. Light Red Reflection.....	1430	10187		5. Purple Flowers	2830	16127		5. Deep Green Grass	5555	18208
	6. Light Green Grass & Water	5610	18136		6. Light Purple Flowers	2640	16124		6. Purple Flowers	2830	16127
	7. Dark Green Grass & Stems	5722	18151		7. Medium Purple Stamens.....	3211	16142		7. Light Purple Flowers	2640	16124
	8. Light Purple Flowers	2640	16124		8. Yellow Flower	0506	22133		8. Medium Purple Stamen	3211	16142
	9. Plum Flowers	2504	16148		9. Gold Flower Outlines	0904	24112		9. Yellow Flowers	0506	22133
	10. Dark Purple Flowers	2920	16130		10. Brown Stamen	1346	26136		10. Gold Flower Outlines	0904	24112
	11. Soft Pink Flowers	2550	10142		11. Deep Green Leaves.....	5555	18208		11. Light Red Flower	1521	10190
	12. Blue Flowers	3711	14142		12. Seam Stitch.....	0020	28151		12. Dark Red Flower Details	1725	12106
	13. Ocean Blue Water.....	3953	14133								
	14. Light Blue Water.....	3840	14121								
	15. Yellow Flowers	0506	22133								
	16. Gold Flower Outlines	0904	24112								
	17. Seam Stitch.....	0020	28151								
12456-18 Tile 18											
	1. Dirt & Cattails	0853	26115		1. Light Brown Road	0853	26115		1. Flower	0015	28154
	2. Light Blue Green Water.....	5050	14175		2. Dark Brown Road.....	1346	26136		2. Seam Stitch.....	0020	28151
	3. Light Green Grass & Water.....	5610	18136		3. Dark Blue Green Grass.....	0463	18101				
	4. Dark Green Grass & Stems	5722	18151		4. Dark Green Grass.....	5722	18151				
	5. Fence	0015	28154		5. Deep Green Grass.....	5555	18208				
	6. Mauve Flowers.....	2764	16103		6. Yellow Flowers	0506	22133				
	7. Soft Pink Flowers	2550	10142		7. Gold Flower Outlines	0904	24112				
	8. Light Purple Flowers	2640	16124		8. Light Red Flowers	1521	10190				
	9. Plum Flowers	2504	16148		9. Dark Red Flowers	1725	12106				
	10. Light Blue Water & Flowers.....	3840	14121		10. Light Purple Flowers	2830	16127				
	11. Ocean Blue Water.....	3953	14133		11. Dark Pink Flowers	2640	16124				
	12. Purple Flowers	2830	16127		12. Purple Flowers	2920	16130				
	13. Yellow Flowers	0506	22133		13. Dark Purple Flowers	3211	16142				
	14. Gold Flower Outlines	0904	24112		14. Stamen.....	1346	26136				
	15. Seam Stitch.....	0020	28151		15. Fence	0015	28154				
12456-19 Tile 19											
	1. Light Brown Road	0853	26115		16. Seam Stitch.....	0020	28151				
	2. Dark Brown Road.....	1346	26136								
	3. Seam Stitch.....	0020	28151								
12456-20 Tile 20											
	1. Light Brown Road	0853	26115								
	2. Dark Brown Road.....	1346	26136								
	3. Dark Blue Green Grass.....	0463	18101								
	4. Dark Green Grass.....	5722	18151								
	5. Seam Stitch.....	0020	28151								
12456-21 Tile 21											
	1. Light Brown Road	0853	26115								
	2. Dark Brown Road.....	1346	26136								
	3. Dark Blue Green Grass.....	0463	18101								
	4. Dark Green Grass & Stems	5722	18151								
	5. Purple Flowers	2830	16127								
	6. Light Purple Flowers	2640	16124								
	7. Medium Purple Stamens.....	3211	16142								
	8. Yellow Flower	0506	22133								
	9. Gold Flower Outlines	0904	24112								
	10. Brown Stamen	1346	26136								
	11. Deep Green Leaves.....	5555	18208								
	12. Seam Stitch.....	0020	28151								
12456-22 Tile 22											
	1. Light Brown Road	0853	26115								
	2. Dark Brown Road.....	1346	26136								
	3. Dark Blue Green Grass.....	0463	18101								
	4. Dark Green Grass.....	5722	18151								
	5. Deep Green Grass.....	5555	18208								
	6. Yellow Flowers	0506	22133								
	7. Gold Flower Outlines	0904	24112								
	8. Light Red Flowers	1521	10190								
	9. Dark Red Flowers	1725	12106								
	10. Light Purple Flowers	2830	16127								
	11. Dark Pink Flowers	2640	16124								
	12. Purple Flowers	2920	16130								
	13. Dark Purple Flowers	3211	16142								
	14. Stamen.....	1346	26136								
	15. Fence	0015	28154								
	16. Seam Stitch.....	0020	28151								
12456-23 Tile 23											
	1. Light Green Grass.....	5610	18136								
	2. Fence	0015	28154								
	3. Dark Blue Green Grass.....	0463	18101								
	4. Dark Green Grass.....	5722	18151								
	5. Deep Green Grass	5555	18208								
	6. Purple Flowers	2830	16127								
	7. Dark Purple Flowers	2920	16130								
	8. Light Purple Flowers	2640	16124								
	9. Medium Purple Details.....	3211	16142								
	10. Yellow Flowers	0506	22133								
	11. Gold Flower Outlines	0904	24112								
	12. Light Red Flowers	1521	10190								
	13. Dark Red Flower Details	1725	12106								
	14. Brown Stamen	1346	26136								
	15. Seam Stitch.....	0020	28151								
12456-24 Tile 24											
	1. Fence	0015	28154								
	2. Light Green Grass.....	5610	18136								
	3. Dark Blue Green Grass.....	0463	18101								
	4. Dark Green Grass & Stems	5722	18151								
	5. Deep Green Grass	5555	18208								
	6. Purple Flowers	2830	16127								
	7. Light Purple Flowers	2640	16124								
	8. Medium Purple Stamen	3211	16142								
	9. Yellow Flowers	0506	22133								
	10. Gold Flower Outlines	0904	24112								
	11. Light Red Flower	1521	10190								
	12. Dark Red Flower Details	1725	12106								
	13. Brown Stamens.....	1346	26136								
	14. Seam Stitch.....	0020	28151								
12456-25 Corner											
	1. Flower	0015	28154								
	2. Seam Stitch.....	0020	28151								
12456-26 Long Border											
	1. Flowers	0015	28154								
	2. Seam Stitch.....	0020	28151								
12456-27 Short Border											
	1. Flowers	0015	28154								
	2. Seam Stitch.....	0020	28151								

SUPPLIES:

- OESD Signature Pack #12456
A Country Spring Lane
- Embroidery Thread
- Bobbin Thread
- Temporary Spray Adhesive
- Heavy Weight Cut-Away Stabilizer
- Stitch Witchery Fusible Bonding Web
¼' wide roll (widely available in 20yd roll)
- 12 yards satin ribbon ¼" wide
- 3 yards of fabric (this will include the blocks, backing and binding)
- Quilt Batting (32" square)



EMBROIDERY:

1. Embroider one of each design file 12456-01 through 12456-24 for the scenic center of the wall hanging using two layers of Heavy Weight Cut Away stabilizer in each hooping. Be sure to use temporary spray adhesive to adhere all layers of stabilizer and fabric together for best stitch results.
2. Embroider border pieces: (**Refer to Diagram A**)
 - 4 x corner 12456-25
 - 12 x top/bottom 12456-27
 - 8 x sides 12456-26
3. The last thing that will stitch in each of these designs is a border that is referred to on the thread chart as "Cut Line Seam Stitch". This stitch is very important in the process assembling the wall hanging. It is vital that it is not skipped when embroidering. Stitch this in the same thread color as your background fabric
4. Once the embroidery process is complete, trim away excess fabric by cutting right on the "Cut Line Seam Stitch". This process is easily done using a rotary cutter and ruler. *NOTE: It may be easier to cut with the back of the block showing since the "Cut Line Seam Stitch" was stitched in the same color as your background fabric.*
(**PHOTO 1**)

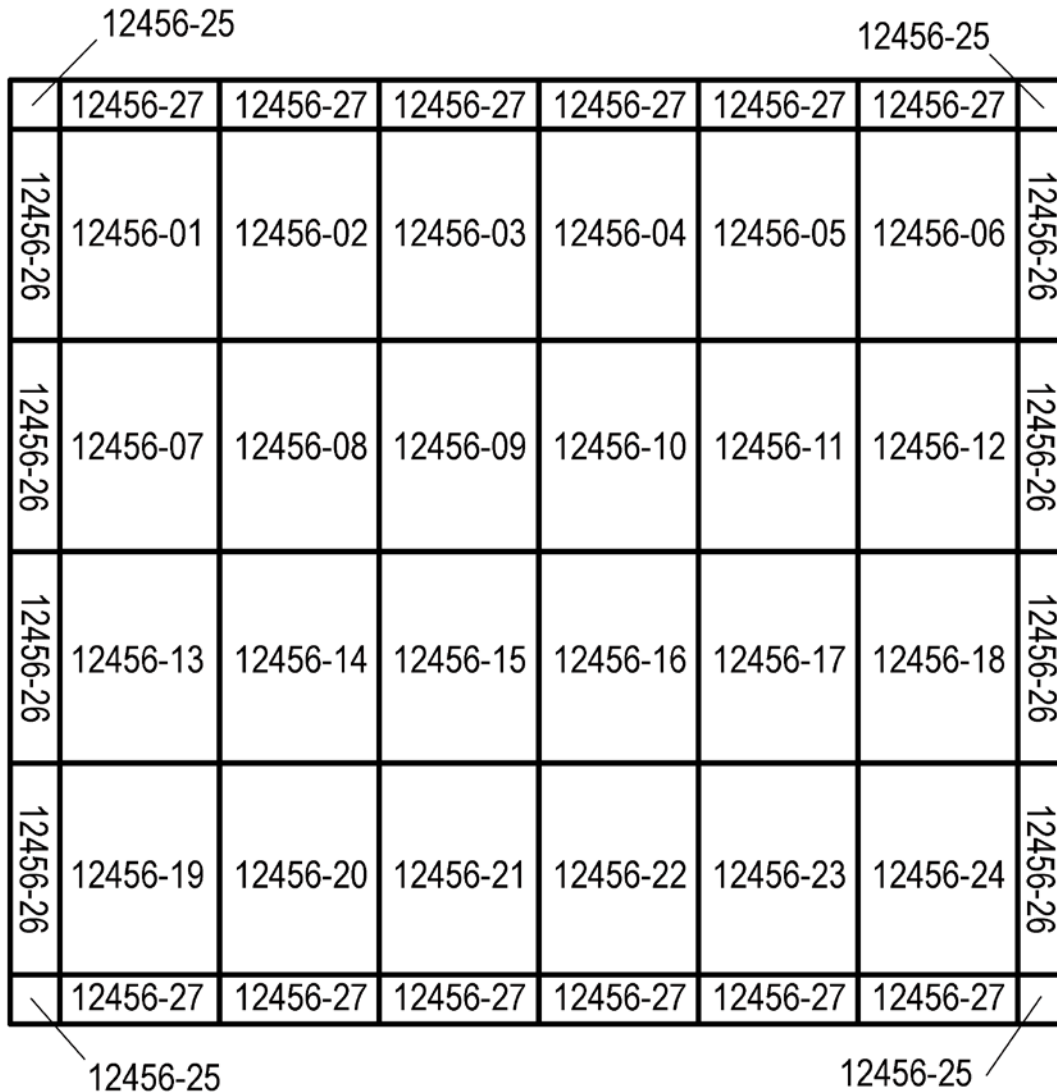


PHOTO 1

CONSTRUCTION:

1. After each block has been trimmed, lay out the pieces near your machine so that it is easy to put the blocks together.
(**Refer to Diagram A**)

Diagram A



2. Stitch the horizontal rows together by laying two pieces, right sides up, next to one another so that their edges are touching. Zig-zag the two of them together, so that the zig-zag catches the edges of both pieces. Repeat until the end of the row. **(PHOTO 2)**
3. When step two is complete you will have six stitched rows. **(PHOTO 3)**
4. Stitch the six rows together in the same manner to complete the front of the wall hanging. Make sure as you sew that your intersections line up between the rows. **(PHOTO 4)**

PHOTO 2



PHOTO 3

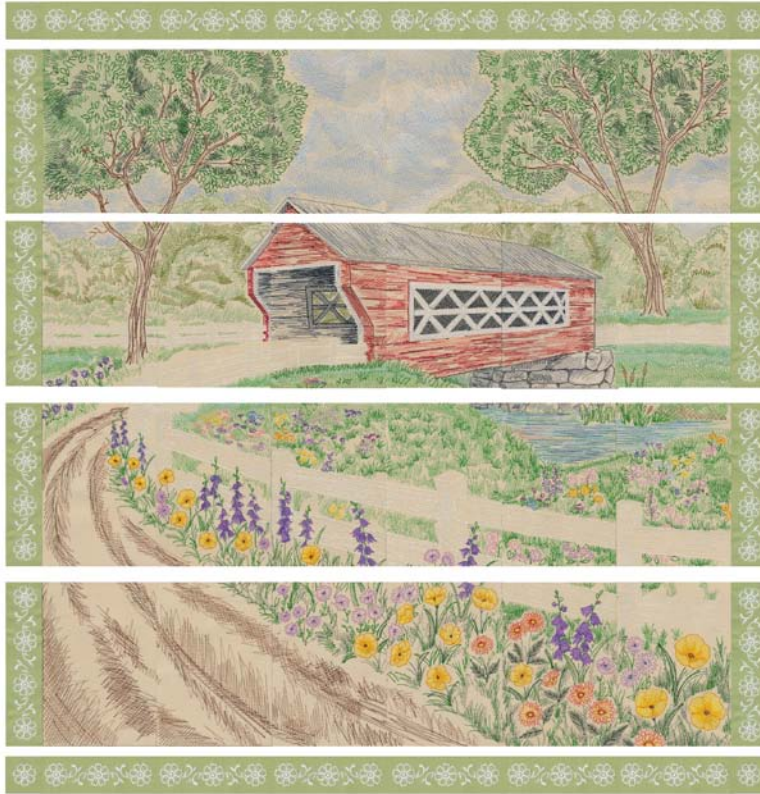


PHOTO 4



5. Cut backing fabric and batting to be at least 2" larger than the finished size of your project. Using temporary spray adhesive, spray the batting and adhere it to the wrong side of the backing fabric.
6. Using temporary spray adhesive, spray the batting and adhere it to the wrong side of the completed wall hanging. This will create a "quilters' sandwich".
7. Quilt as desired. In our sample we simply stitched in the ditch.
8. Cover all of the seams with satin ribbon. Cut ribbon into strips approximately 1" longer than the seam you are covering. Spray one side of ribbon with temporary spray adhesive. Adhere a layer of Stitch Witchery to each ribbon strip. Be careful not to stretch the Stitch Witchery as this will cause your ribbons to draw up and tend to not want to lay flat. Lay ribbon in place, making sure each is straight, and iron to permanently fuse ribbon in place. Since Stitch Witchery is permanent, stitching ribbons in place is not necessary. **(PHOTO 05)**
9. Place ribbons in the following order: Place the seven vertical ribbons first followed by the five horizontal ribbons.
10. Trim away any excess strips of ribbon so that the outer edges of the project are even.
11. Trim away the excess backing fabric and batting then bind the wall hanging using your favorite binding method.

PHOTO 5

