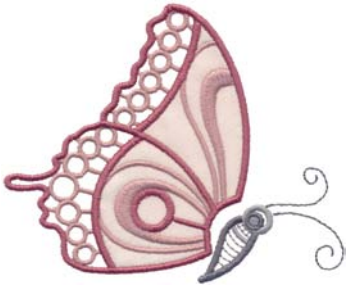
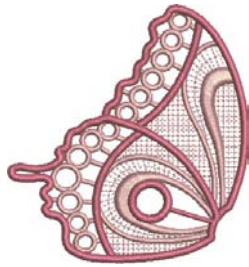


Note: Some designs in this collection may have been created using unique special stitches and/or techniques. To preserve design integrity when rescaling or rotating designs in your software, always rescale or rotate designs using the handles directly on-screen.



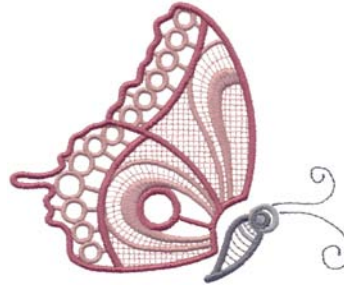
12474-01 Appliqué Butterfly 1

4.34 X 3.61 in.
110.24 X 91.69 mm
10,143 St. ✿ L



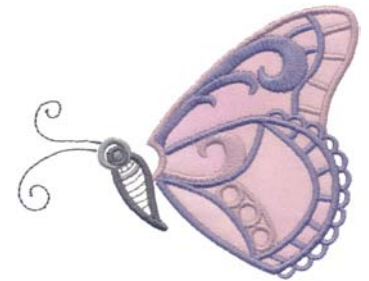
12474-02 Freestanding Lace Wings Butterfly 1

3.18 X 3.49 in.
80.77 X 88.65 mm
11,398 St.



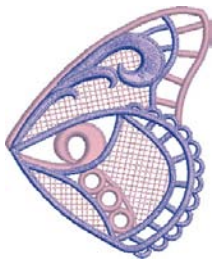
12474-03 Butterfly 1

4.34 X 3.61 in.
110.24 X 91.69 mm
11,627 St. ✿



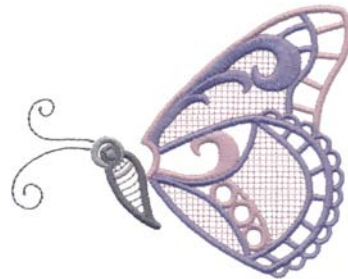
12474-04 Appliqué Butterfly 2

4.03 X 3.28 in.
102.36 X 83.31 mm
8591 St. ✿



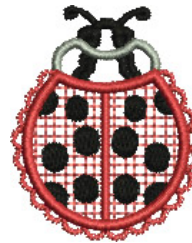
12474-05 Freestanding Lace Wings Butterfly 2

2.61 X 3.28 in.
66.29 X 83.31 mm
10,007 St.



12474-06 Butterfly 2

4.03 X 3.28 in.
102.36 X 83.31 mm
9740 St. ✿



12474-07 Freestanding Lace Ladybug

1.31 X 1.67 in.
33.27 X 42.42 mm
4,403 St. S



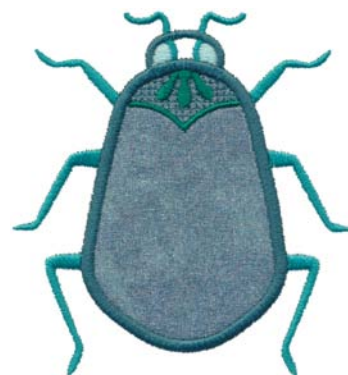
12474-08 Appliqué Ladybug

1.38 X 1.87 in.
35.05 X 47.50 mm
1,773 St. S



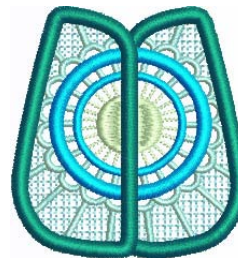
12474-09 Freestanding Lace Ladybug Wings

1.87 X 1.30 in.
47.50 X 33.02 mm
5,028 St. S



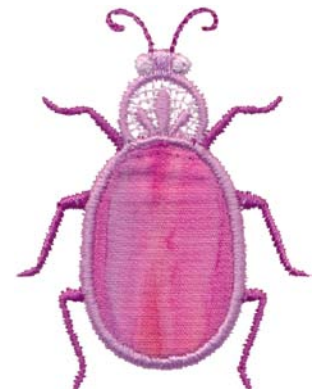
12474-10 Appliqué Scarab

3.34 X 3.62 in.
84.84 X 91.95 mm
4,781 St.



12474-11 Freestanding Lace Scarab Wings

2.18 X 2.40 in.
55.37 X 60.96 mm
9,208 St.



12474-12 Appliqué Beetle 1

1.84 X 2.42 in.
46.74 X 61.47 mm
2,607 St.

✿ Design contains a loose fill.

✿ Some white areas shown are not stitched.

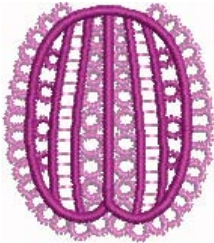
L Design is larger than 5" (127 mm) in either direction.

S Design is smaller than 1.5" (38.1 mm) in either direction.

It is a violation of Copyright law to make and distribute copies of electronic designs or artwork.

Electronic designs are licensed to the original purchaser for use at one location. ©2013 OESD, LLC. All rights reserved.

Note: Some designs in this collection may have been created using unique special stitches and/or techniques. To preserve design integrity when rescaling or rotating designs in your software, always rescale or rotate designs using the handles directly on-screen.



**12474-13 Freestanding Lace
Beetle 1 Wings**
1.40 X 1.62 in.
35.56 X 41.15 mm
5,769 St. **S**



12474-14 Appliqué Beetle 2
2.00 X 2.43 in.
50.80 X 61.72 mm
2,969 St.



**12474-15 Freestanding Lace
Beetle 2 Wings**
1.46 X 1.50 in.
37.08 X 38.10 mm
4,257 St. **S**



12474-16 Appliqué Beetle 3
2.17 X 2.63 in.
55.12 X 66.80 mm
2,859 St.



**12474-17 Freestanding Lace
Beetle 3 Wings**
1.58 X 1.45 in.
40.13 X 36.83 mm
4,814 St. **S**



**12474-18 Freestanding Lace
Beetle 3**
2.34 X 2.80 in.
59.44 X 71.12 mm
8,482 St.



**12474-19 Luna Moth
Freestanding Lace & Appliqué**
5.79 X 4.85 in.
147.07 X 123.19 mm
25,087 St. **L**



**12474-20 Freestanding Lace
Luna Moth Wings**
5.80 X 4.70 in.
147.32 X 119.38 mm
25,456 St. **L**



**12474-21 Luna Moth Body
Appliqué**
1.11 X 1.64 in.
28.19 X 41.66 mm
1,102 St. **S**



**12474-22 Freestanding Lace
Luna Moth**
5.80 X 4.84 in.
147.32 X 122.94 mm
27,253 St. **L**



**12474-23 Freestanding Lace Bee
Wings**
3.37 X .68 in.
85.60 X 17.27 mm
2,986 St. **S**



12474-24 Appliqué Bee Body
.72 X 1.74 in.
18.29 X 44.20 mm
1,920 St. **S**

⌘ Design contains a loose fill.
⚙ Some white areas shown are not stitched.

L Design is larger than 5" (127 mm) in either direction.
S Design is smaller than 1.5" (38.1 mm) in either direction.

Note: Some designs in this collection may have been created using unique special stitches and/or techniques. To preserve design integrity when rescaling or rotating designs in your software, always rescale or rotate designs using the handles directly on-screen.



**12474-25 Freestanding Lace
Dragonfly Wings**
4.03 X 1.44 in.
102.36 X 36.58 mm
10,841 St. **S**



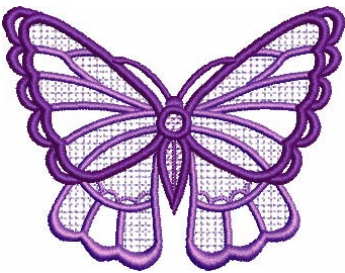
**12474-26 Appliqué Dragonfly
Body**
.70 X 3.01 in.
17.78 X 76.45 mm
1,783 St. **S**



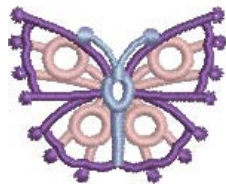
**12474-27 Freestanding Lace
Dragonfly Charm**
2.91 X 2.13 in.
73.91 X 54.10 mm
4,821 St.



**12474-28 Freestanding Lace
Scarab Charm**
1.20 X 1.96 in.
30.48 X 49.78 mm
3,624 St. **S**



**12474-29 Freestanding Lace
Butterfly**
3.38 X 2.66 in.
85.85 X 67.56 mm
11,484 St.



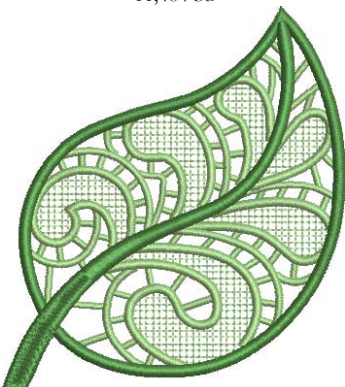
**12474-30 Freestanding Lace
Butterfly Mini**
1.46 X 1.20 in.
37.08 X 30.48 mm
3,734 St. **S**



**12474-31 Freestanding Lace
Butterfly Charm**
2.44 X 1.60 in.
61.98 X 40.64 mm
6,847 St.



**12474-32 Freestanding Lace
Large Butterfly**
5.01 X 4.25 in.
127.25 X 107.95 mm
27,450 St. **L**



12474-33 Freestanding Lace Leaf
3.51 X 4.06 in.
89.15 X 103.12 mm
16,088 St.



12474-34 Appliqué Leaf
3.57 X 3.51 in.
90.68 X 89.15 mm
4,059 St.

⌘ Design contains a loose fill.

⚙ Some white areas shown are not stitched.

L Design is larger than 5" (127 mm) in either direction.

S Design is smaller than 1.5" (38.1 mm) in either direction.

It is a violation of Copyright law to make and distribute copies of electronic designs or artwork.

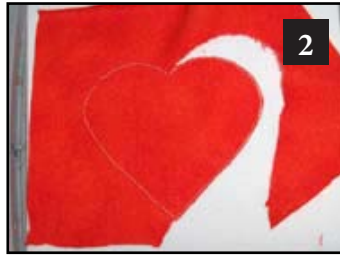
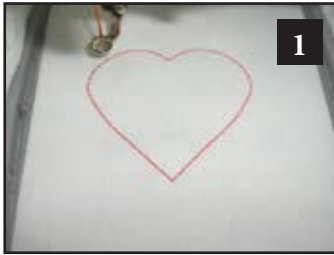
Electronic designs are licensed to the original purchaser for use at one location. ©2013 OESD, LLC. All rights reserved.

Listings below indicate color sample, stitching order and suggested thread color number. "I" refers to Isacord Thread and "T" refers to Timeless. Colors beginning with 20501 refer to YLI Fine Metallics, 7 refer to Yenmet Metallic, 8 refer to YLI Variations Variegated Thread and 9 refer to Isacord Multicolor Variegated.

| | I | T | | I | T | | I | T |
|---|------|-------|--|------|-------|---|------|-------|
| 12474-01 Appliqué Butterfly 1 | | | 12474-12 Appliqué Beetle 1 | | | 12474-23 Freestanding Lace Bee Wings | | |
| 1. Placement Stitch..... | 2051 | 10118 | 1. Placement Stitch..... | 2650 | 10130 | 1. Wings..... | 3650 | 14106 |
| 2. Cut Line & Tackdown..... | 2051 | 10118 | 2. Cut Lines & Tackdown..... | 2650 | 10130 | 12474-24 Appliqué Bee Body | | |
| 3. Inside Wings..... | 2051 | 10118 | 3. Head..... | 2650 | 10130 | 1. Placement Stitch..... | 0132 | 28145 |
| 4. Wing Outlines..... | 2241 | 10154 | 4. Legs & Antennae..... | 2504 | 16148 | 2. Cut Line & Tackdown..... | 0132 | 28145 |
| 5. Head & Body Details..... | 0131 | 28130 | 5. Cover Stitch..... | 2640 | 16124 | 3. Dark Stripes..... | 0132 | 28145 |
| 6. Eye & Body..... | 0112 | 28142 | 6. Eyes..... | 2650 | 10130 | 4. Light Stripes..... | 0520 | 22103 |
| 12474-02 Freestanding Lace Wings Butterfly 1 | | | 12474-13 Freestanding Lace Beetle 1 Wings | | | 5. Cover Stitch & Details..... | 0504 | 22130 |
| 1. Wing..... | 2051 | 10118 | 1. Light Details..... | 2640 | 16124 | 6. Eyes..... | 0020 | 28151 |
| 2. Wing Outlines..... | 2241 | 10154 | 2. Dark Details..... | 2504 | 16148 | 12474-25 Freestanding Lace Dragonfly Wings | | |
| 12474-03 Butterfly 1 | | | 12474-14 Appliqué Beetle 2 | | | 1. Wings..... | 3971 | 28124 |
| 1. Wing..... | 2051 | 10118 | 1. Placement Stitch..... | 3732 | 14163 | 12474-26 Appliqué Dragonfly Body | | |
| 2. Wing Outlines..... | 2241 | 10154 | 2. Cut Line & Tackdown..... | 3732 | 14163 | 1. Placement Stitch..... | 2115 | 12145 |
| 3. Head & Body Details..... | 0131 | 28130 | 3. Legs & Antennae..... | 3732 | 14163 | 2. Cut Line & Tackdown..... | 2115 | 12145 |
| 4. Eye & Body..... | 0112 | 28142 | 4. Upper Back..... | 3641 | 14130 | 3. Eyes & Antennae..... | 2115 | 12145 |
| 12474-04 Appliqué Butterfly 2 | | | 5. Cover Stitch..... | 3711 | 14142 | 4. Cover Stitch..... | 1912 | 12133 |
| 1. Placement Stitch..... | 2761 | 16100 | 6. Eyes..... | 3210 | 16145 | 12474-27 Freestanding Lace Dragonfly Charm | | |
| 2. Cut Line & Tackdown..... | 2761 | 16100 | 12474-15 Freestanding Lace Beetle 2 Wings | | | 1. Wings..... | 4111 | 14190 |
| 3. Wing Details..... | 2761 | 16100 | 1. Inside Details..... | 3641 | 14130 | 2. Body..... | 5220 | 18157 |
| 4. Wing Details..... | 3241 | 16115 | 2. Design Outlines..... | 3620 | 14148 | 3. Wings Outlines..... | 4240 | 14178 |
| 5. Head & body Details..... | 0131 | 28130 | 12474-16 Appliqué Beetle 3 | | | 4. Body & Loop..... | 4610 | 14193 |
| 6. Eye & Body..... | 0112 | 28142 | 1. Placement Stitch..... | 0310 | 22124 | 12474-28 Freestanding Lace Scarab Charm | | |
| 12474-05 Freestanding Lace Wings Butterfly 2 | | | 2. Cut Line & Tackdown..... | 0310 | 22124 | 1. Legs..... | 5210 | 18104 |
| 1. Wing Details..... | 2761 | 16100 | 3. Antennae..... | 0310 | 22124 | 2. Body & Loop..... | 5220 | 18157 |
| 2. Wing Details..... | 3241 | 16115 | 4. Legs..... | 1134 | 26124 | 3. Shell Outlines..... | 5100 | 18172 |
| 12474-06 Butterfly 2 | | | 5. Cover Stitch..... | 0506 | 22133 | 12474-29 Freestanding Lace Butterfly | | |
| 1. Wing Details..... | 2761 | 16100 | 12474-17 Freestanding Lace Beetle 3 Wings | | | 1. Wings..... | 3040 | 16118 |
| 2. Wing Details..... | 3241 | 16115 | 1. Light Details..... | 0506 | 22133 | 2. Wing Details..... | 2830 | 16127 |
| 3. Head & Details..... | 0131 | 28130 | 2. Dark Details..... | 0904 | 24112 | 3. Wings & Body..... | 2905 | 16136 |
| 4. Body, Eye, & Antennae..... | 0112 | 28142 | 12474-18 Freestanding Lace Beetle 3 | | | 12474-30 Freestanding Lace Butterfly Mini | | |
| 12474-07 Freestanding Lace Ladybug | | | 1. Legs & Antennae..... | 1134 | 26124 | 1. Wings..... | 2761 | 16100 |
| 1. Body..... | 1725 | 12106 | 2. Body..... | 0506 | 22133 | 2. Wing Outlines..... | 2905 | 16136 |
| 2. Black Details..... | 0020 | 28151 | 3. Design Outlines..... | 0904 | 24112 | 3. Body..... | 3652 | 14124 |
| 3. Head..... | 0131 | 28130 | 12474-19 Luna Moth Freestanding Lace & Appliqué | | | 12474-31 Freestanding Lace Butterfly Charm | | |
| 4. Design Outlines..... | 1725 | 12106 | 1. Wings..... | 5822 | 18127 | 1. Wings..... | 3840 | 14121 |
| 12474-08 Appliqué Ladybug | | | 2. Wing Details..... | 5531 | 18139 | 2. Wing Outlines..... | 3711 | 14142 |
| 1. Eyes & Upper Back..... | 0020 | 28151 | 3. Placement Stitch..... | 5633 | 18154 | 3. Body & Loop..... | 4073 | 28101 |
| 2. Placement Stitch..... | 0020 | 28151 | 4. Cut Line & Tackdown..... | 5633 | 18154 | 12474-32 Freestanding Lace Large Butterfly | | |
| 3. Cut Line & Tackdown..... | 0020 | 28151 | 5. Head..... | 5633 | 18154 | 1. Wings & Body..... | 0520 | 22103 |
| 4. Cover Stitch..... | 0108 | 28136 | 6. Cover Stitch..... | 0771 | 20106 | 2. Wings Shading..... | 0811 | 22145 |
| 12474-09 Freestanding Lace Ladybug Wings | | | 12474-20 Freestanding Lace Luna Moth Wings | | | 3. Wing Outlines & Details..... | 0904 | 24112 |
| 1. Inside Details..... | 1725 | 12106 | 1. Wings..... | 5822 | 18127 | 4. Body Shading..... | 3040 | 16118 |
| 2. Spots..... | 0020 | 28151 | 2. Wing Details..... | 5531 | 18139 | 5. Body Details..... | 2830 | 16127 |
| 3. Design Outlines..... | 1725 | 12106 | 12474-21 Luna Moth Body Appliqué | | | 6. Body Outlines..... | 2905 | 16136 |
| 12474-10 Appliqué Scarab | | | 1. Placement Stitch..... | 5633 | 18154 | 7. Eyes..... | 2830 | 16127 |
| 1. Placement Stitch..... | 5050 | 14175 | 2. Cut Line & Tackdown..... | 5633 | 18154 | 12474-33 Freestanding Lace Leaf | | |
| 2. Cut Line & Tackdown..... | 5050 | 14175 | 3. Head..... | 5633 | 18154 | 1. Inside Details..... | 5822 | 18127 |
| 3. Eyes..... | 5050 | 14175 | 4. Cover Stitch..... | 0771 | 20106 | 2. Leaf Outlines..... | 5633 | 18154 |
| 4. Legs..... | 4610 | 14193 | 12474-22 Freestanding Lace Luna Moth | | | 12474-34 Appliqué Leaf | | |
| 5. Design Outlines..... | 5643 | 18196 | 1. Wings..... | 5822 | 18127 | 1. Placement Stitch..... | 5531 | 18139 |
| 6. Upper Back..... | 5100 | 18172 | 2. Wing Details..... | 5531 | 18139 | 2. Cut Line & Tackdown..... | 5531 | 18139 |
| 12474-11 Freestanding Lace Scarab Wings | | | 3. Head..... | 5633 | 18154 | 3. Veins..... | 5531 | 18139 |
| 1. Light Green Details..... | 5650 | 18112 | 4. Body..... | 0771 | 20106 | 4. Cover Stitch & Stem..... | 5633 | 18154 |
| 2. Light Blue Details..... | 5050 | 14175 | 12474-23 Freestanding Lace Luna Moth | | | 12474-34 Appliqué Leaf | | |
| 3. Blue Rings..... | 4111 | 14190 | 1. Wings..... | 5822 | 18127 | 1. Placement Stitch..... | 5531 | 18139 |
| 4. Green Outlines..... | 5100 | 18172 | 2. Wing Details..... | 5531 | 18139 | 2. Cut Line & Tackdown..... | 5531 | 18139 |
| | | | 3. Head..... | 5633 | 18154 | 3. Veins..... | 5531 | 18139 |
| | | | 4. Body..... | 0771 | 20106 | 4. Cover Stitch & Stem..... | 5633 | 18154 |

Cut-in-Place Appliqué Instructions

1. Hoop your fabric and backing.
2. Sew the pattern/placement. **PHOTO 1**
3. Place a piece of appliqué fabric over the pattern/placement so that it is completely covered.
4. Sew the trim stitch/tackdown.
5. Carefully cut away the excess appliqué fabric. **PHOTO 2**
6. Sew the remainder of the design and repeat for any remaining pieces. **PHOTO 3**



Freestanding Lace Guidelines

1. Hoop two layers of water-soluble stabilizer.
2. Select the thread colors of your choice and wind bobbins to match. Bobbin threads must match thread choice to ensure strength, stability and overall appearance of the free standing lace. Standard bobbin thread will not work when stitching out a free standing lace design.
3. Attach the hoop to the machine and select the design of your choice.
4. Stitch out the design completely, changing threads if and when necessary.
5. When design is complete remove hoop from the machine and design from hoop. Trim excess stabilizer from the design.
6. Rinse away remaining stabilizer and allow to dry.

Handy Tips

For stiffer lace:

- Do not rinse away all of the stabilizer for a **stiffer** lace. However, do note that the thread may appear a shade darker if stabilizer is not removed completely. Your lace may feel tacky if too much stabilizer remains.
- If you wash out too much stabilizer, easily re-stiffen by dissolving some of the stabilizer scraps in water and dipping the lace piece in the solution.

For very soft lace:

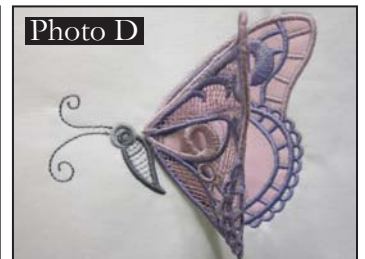
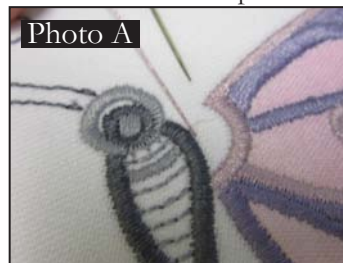
- Cut away as much excess stabilizer as possible without cutting the design. Rinse in warm water until all traces of stabilizer have dissolved and rinsed away.
- If lace should become too limp to work with, dissolve some of the stabilizer scraps in water and dip the lace piece in the solution.

Drying lace:

- Lay lace piece with right side down to dry. This will minimize the tendency for the lace to curl.

Assembling Nature's Lace Elements

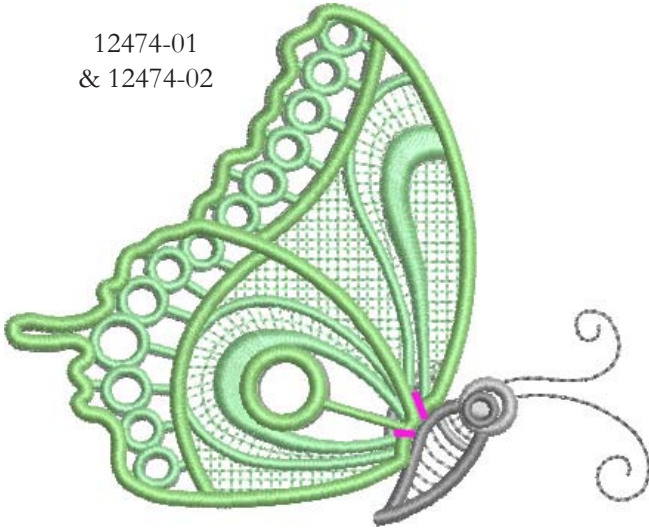
- Sew out designs of your choice. Dry lace elements completely before attaching.
- Attach lace elements using bar stitches. **Photos A & B**
- Refer to the diagrams for recommended placement of bar stitches for each design.
- If you'd like the wings to curl, dampen lightly and shape as desired. (**Photo C**) Allow to dry again to retain shape. **Photo D**



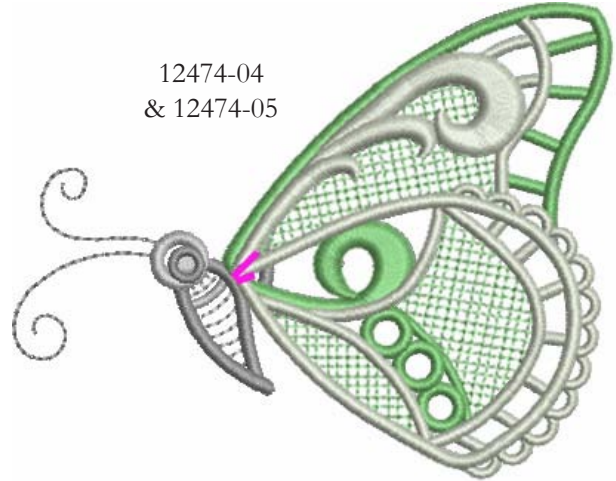
Bar Stitch Guides

Bug body is shown in grey. Freestanding lace wings are shown in green.
Bar stitches are shown in pink.

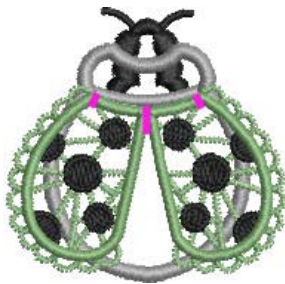
12474-01
& 12474-02



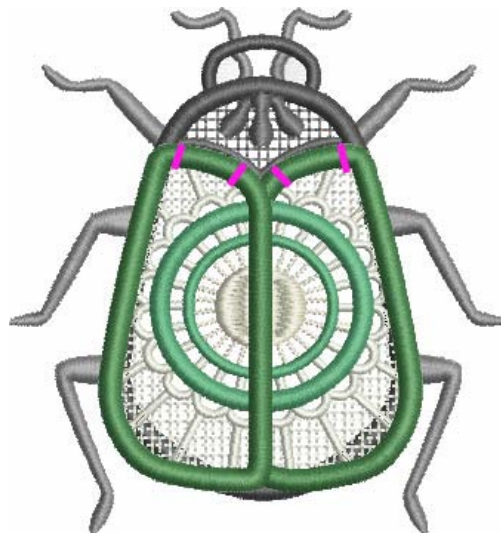
12474-04
& 12474-05



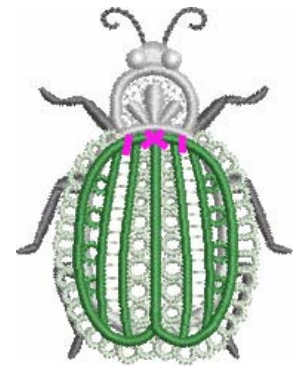
12474-08
& 12474-09



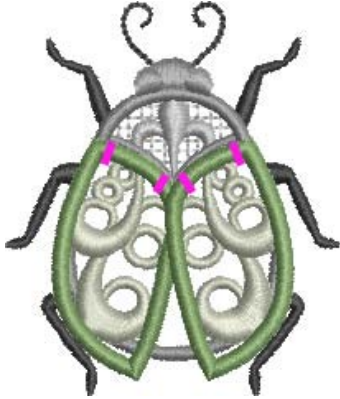
12474-10
& 12474-11



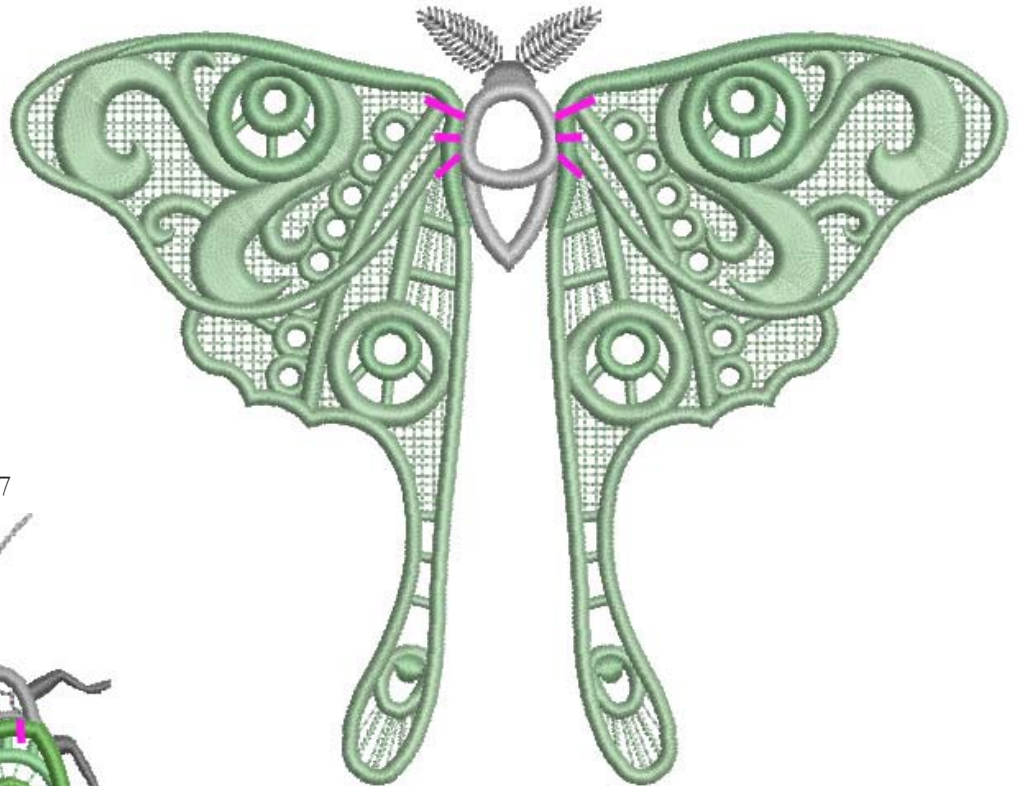
12474-12
& 12474-13



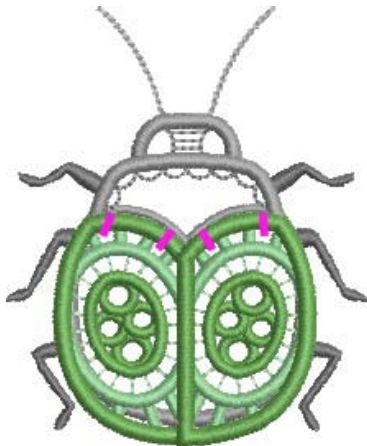
12474-14
& 12474-15



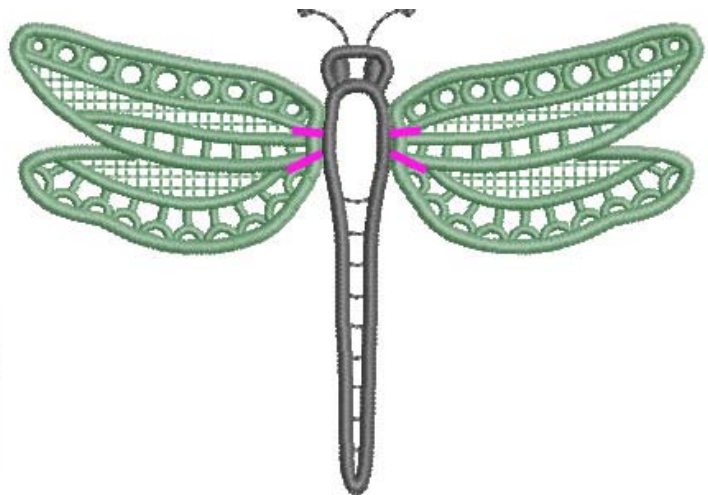
12474-20
& 12474-21



12474-16
& 12474-17



12474-25
& 12474-26



12474-23
& 12474-24

