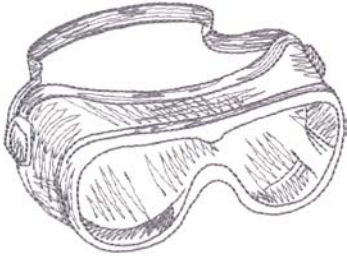
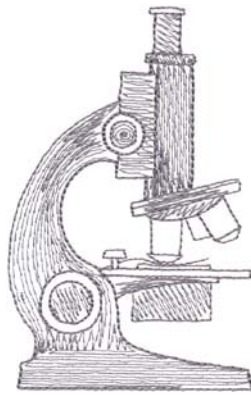


Note: Some designs in this collection may have been created using unique special stitches and/or techniques. To preserve design integrity when rescaling or rotating designs in your software, always rescale or rotate designs using the handles directly on-screen.



12479-01 Safety Goggles

3.45 X 2.55 in.
87.63 X 64.77 mm
3,337 St.



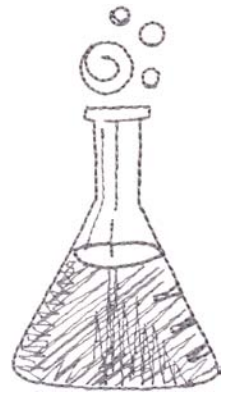
12479-02 Optical Microscope

2.35 X 3.72 in.
59.69 X 94.49 mm
2,989 St.



12479-03 Animal Cell Diagram

3.09 X 2.86 in.
78.49 X 72.64 mm
3,102 St.



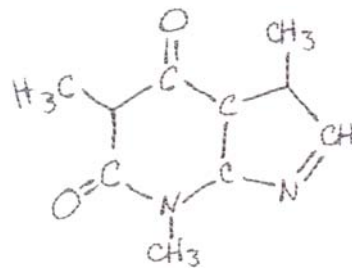
12479-04 Beaker

1.50 X 2.81 in.
38.10 X 71.37 mm
1,194 St.



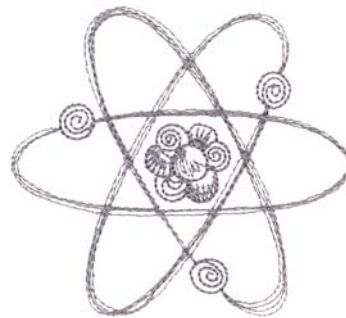
12479-05 Test Tube

.64 X 1.97 in.
16.26 X 50.04 mm
764 St. S



12479-06 Caffeine

2.78 X 2.13 in.
70.61 X 54.10 mm
975 St.



12479-07 Atom

2.70 X 2.46 in.
68.58 X 62.48 mm
1,689 St.



12479-08 Glasses

2.85 X 1.63 in.
72.39 X 41.40 mm
1,638 St.

Talk Nerdy to me

12479-09 Talk Nerdy

2.90 X 3.35 in.
73.66 X 85.09 mm
3,079 St.



Tesla

12479-10 Tesla

2.16 X 3.18 in.
54.86 X 80.77 mm
1,216 St.



Einstein

12479-11 Einstein

2.94 X 3.20 in.
74.68 X 81.28 mm
2,301 St.

Design contains a loose fill.

Some white areas shown are not stitched.

L Design is larger than 5" (127 mm) in either direction.

S Design is smaller than 1.5" (38.1 mm) in either direction.

It is a violation of Copyright law to make and distribute copies of electronic designs or artwork.

Electronic designs are licensed to the original purchaser for use at one location. ©2013 OESD, LLC. All rights reserved.

Note: Some designs in this collection may have been created using unique special stitches and/or techniques. To preserve design integrity when rescaling or rotating designs in your software, always rescale or rotate designs using the handles directly on-screen.

$$i\hbar \frac{\partial}{\partial t} \Psi(\mathbf{r}, t) = \left(-\frac{\hbar^2}{2m} \nabla^2 + V(\mathbf{r}, t) \right) \Psi(\mathbf{r}, t) \quad a^2 + b^2 = c^2 \quad E = MC^2$$

12479-12 Schrodinger's Equation

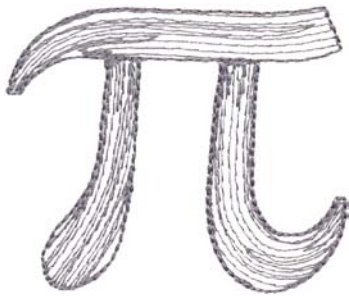
4.77 X .60 in.
121.16 X 15.24 mm
1,140 St. S

12479-13 Pythagorean Theorem

1.48 X .30 in.
37.59 X 7.62 mm
256 St. S

12479-14 Mass-Energy Equivalence

1.18 X .38 in.
29.97 X 9.65 mm
187 St. S



<body>

12479-15 Pi

2.28 X 1.95 in.
57.91 X 49.53 mm
1,428 St.

12479-16 USB Port

2.32 X .96 in.
58.93 X 24.38 mm
869 St. S

12479-17 Power Button

1.54 X 1.53 in.
39.12 X 38.86 mm
1,046 St.

12479-18 Body Start

3.80 X 1.02 in.
96.52 X 25.91 mm
1,616 St. S

</body>

```
01101110 01100101 01110010 01100100 0100000
01100110 01101111 01110010 0100000
01101100 01101001 01100110 01100101
```

12479-19 Body End

4.24 X 1.02 in.
107.70 X 25.91 mm
1,761 St. S

12479-20 Binary Code

6.03 X .77 in.
153.16 X 19.56 mm
2,698 St. L S

Design contains a loose fill.
 Some white areas shown are not stitched.

L Design is larger than 5" (127 mm) in either direction.
S Design is smaller than 1.5" (38.1 mm) in either direction.

Listings below indicate color sample, stitching order and suggested thread color number. "I" refers to Isacord thread and "T" refers to Timeless thread. Colors beginning with 20501 refer to YLI Fine Metallics, 7 refer to Yenmet Metallic, 8 refer to YLI Variations Variegated Thread and 9 refer to Isacord Multicolor Variegated.

	I	T		I	T		I	T
12479-01 Safety Goggles			12479-08 Glasses			12479-15 Pi		
■ 1. Single Color Design.....	0108	28136	■ 1. Single Color Design.....	0108	28136	■ 1. Single Color Design.....	0108	28136
12479-02 Optical Microscope			12479-09 Talk Nerdy			12479-16 USB Port		
■ 1. Single Color Design.....	0108	28136	■ 1. Single Color Design.....	0108	28136	■ 1. Single Color Design.....	0108	28136
12479-03 Animal Cell Diagram			12479-10 Tesla			12479-17 Power Button		
■ 1. Single Color Design.....	0108	28136	■ 1. Single Color Design.....	0108	28136	■ 1. Single Color Design.....	0108	28136
12479-04 Beaker			12479-11 Einstein			12479-18 Body Start		
■ 1. Single Color Design.....	0108	28136	■ 1. Single Color Design.....	0108	28136	■ 1. Single Color Design.....	0108	28136
12479-05 Test Tube			12479-12 Schrodinger's Equation			12479-19 Body End		
■ 1. Single Color Design.....	0108	28136	■ 1. Single Color Design.....	0108	28136	■ 1. Single Color Design.....	0108	28136
12479-06 Caffeine			12479-13 Pythagorean Theorem			12479-20 Binary Code		
■ 1. Single Color Design.....	0108	28136	■ 1. Single Color Design.....	0108	28136	■ 1. Single Color Design.....	0108	28136
12479-07 Atom			12479-14 Mass-Energy Equivalence					
■ 1. Single Color Design.....	0108	28136	■ 1. Single Color Design.....	0108	28136			