

Note: Some designs in this collection may have been created using unique special stitches and/or techniques. To preserve design integrity when rescaling or rotating designs in your software, always rescale or rotate designs using the handles directly on-screen.



12482-01 Couture Leaf Appliqué 1
4.61 X 5.50 in.
117.09 X 139.70 mm
5,488 St. L



12482-02 Couture Leaf Appliqué 2
3.85 X 4.81 in.
97.79 X 122.17 mm
3,969 St.



12482-03 Couture Leaf Appliqué 3
3.26 X 4.05 in.
82.80 X 102.87 mm
3,387 St.



12482-04 Couture Leaf Appliqué 4
2.63 X 3.62 in.
66.80 X 91.95 mm
2,480 St.



12482-05 Couture Leaf Appliqué 5
1.90 X 3.04 in.
48.26 X 77.22 mm
1,676 St.



12482-06 Couture Leaf Appliqué 6
1.72 X 3.53 in.
43.69 X 89.66 mm
1,667 St.



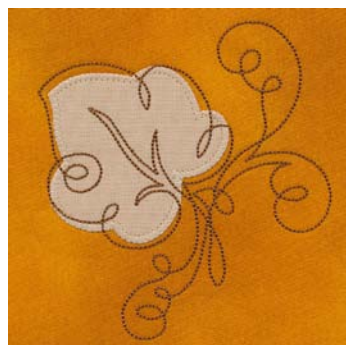
12482-07 Couture Appliqué Leaves & Swirls 1
4.91 X 5.75 in.
124.71 X 146.05 mm
7,108 St. L



12482-08 Couture Appliqué Leaves & Swirls 2
4.14 X 6.12 in.
105.16 X 155.45 mm
6,128 St. L



12482-09 Couture Appliqué Leaves & Swirls 3
3.89 X 6.49 in.
98.81 X 164.85 mm
6,541 St. L



12482-10 Couture Appliqué Leaf & Swirls 1
3.98 X 4.37 in.
101.09 X 111.00 mm
4,306 St.



12482-11 Couture Appliqué Leaf & Swirls 2
3.18 X 3.72 in.
80.77 X 94.49 mm
2,830 St.



12482-12 Couture Appliqué Leaf & Swirls 3
2.60 X 2.88 in.
66.04 X 73.15 mm
2,217 St.

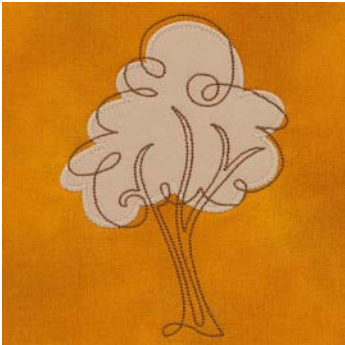
Design contains a loose fill.

Some white areas shown are not stitched.

L Design is larger than 5" (127 mm) in either direction.

S Design is smaller than 1.5" (38.1 mm) in either direction.

Note: Some designs in this collection may have been created using unique special stitches and/or techniques. To preserve design integrity when rescaling or rotating designs in your software, always rescale or rotate designs using the handles directly on-screen.



12482-13 Couture Appliqué Tree 1
3.85 X 5.50 in.
97.79 X 139.70 mm
4,637 St. ⚡ L



12482-14 Couture Appliqué Tree 2
5.03 X 7.02 in.
127.76 X 178.31 mm
7,119 St. ⚡ L



12482-15 Couture Appliqué Tree 3
2.87 X 6.62 in.
72.90 X 168.15 mm
4,719 St. ⚡ L



12482-16 Couture Appliqué Pumpkin
4.40 X 5.51 in.
111.76 X 139.95 mm
6,391 St. ⚡ L



12482-17 Couture Linework Leaf 1
2.79 X 3.43 in.
70.87 X 87.12 mm
2,389 St. ⚡



12482-18 Couture Linework Leaf 2
1.57 X 2.52 in.
39.88 X 64.01 mm
1,488 St. ⚡



12482-19 Couture Background Swirl 1
4.82 X 5.98 in.
122.43 X 151.89 mm
3,143 St. ⚡ L



12482-20 Couture Background Swirl 2
3.83 X 4.54 in.
97.28 X 115.32 mm
2,344 St. ⚡

⚡ Design contains a loose fill.
⚡ Some white areas shown are not stitched.

L Design is larger than 5" (127 mm) in either direction.
S Design is smaller than 1.5" (38.1 mm) in either direction.



Autumn Couture

#12482 / 20 Designs

Listings below indicate color sample, stitching order and suggested thread color number. "I" refers to Isacord Thread and "T" refers to Timeless. Colors beginning with 20501 refer to YLI Fine Metallics, 7 refer to Yenmet Metallic, 8 refer to YLI Variations Variegated Thread and 9 refer to Isacord Multicolor Variegated.

	I	T
12482-01 Couture Leaf Appliqué 1		
1. Leaf Placement	0851	20118
2. Leaf Tackdown	0851	20118
3. Linework	0933	26148

12482-02 Couture Leaf Appliqué 2		
1. Leaf Placement	0761	20103
2. Leaf Tackdown	0761	20103
3. Linework	0933	26148

12482-03 Couture Leaf Appliqué 3		
1. Large Leaf Placement	0851	20118
2. Large Leaf Tackdown	0851	20118
3. Small Leaf Placement	0761	20103
4. Small Leaf Tackdown	0761	20103
5. Linework	0933	26148

12482-04 Couture Leaf Appliqué 4		
1. Leaf Placement	0761	20103
2. Leaf Tackdown	0761	20103
3. Linework	0933	26148

12482-05 Couture Leaf Appliqué 5		
1. Leaf Placement	0851	20118
2. Leaf Tackdown	0851	20118
3. Linework	0933	26148

12482-06 Couture Leaf Appliqué 6		
1. Leaf Placement	0761	20103
2. Leaf Tackdown	0761	20103
3. Linework	0933	26148

	I	T
12482-07 Couture Appliqué Leaves & Swirls 1		
1. Large & Small Leaf Placement	0851	20118
2. Large & Small Leaf Tackdown	0851	20118
3. Medium Leaf Placement	0761	20103
4. Medium Leaf Tackdown	0761	20103
5. Linework	0933	26148

12482-08 Couture Appliqué Leaves & Swirls 2		
1. Large Leaf Placement	0851	20118
2. Large Leaf Tackdown	0851	20118
3. Small Leaf Placement	0761	20103
4. Small Leaf Tackdown	0761	20103
5. Linework	0933	26148

12482-09 Couture Appliqué Leaves & Swirls 3		
1. Middle Leaf Placement	0851	20118
2. Middle Leaf Tackdown	0851	20118
3. Top & Bottom Leaf Placement	0761	20103
4. Top & Bottom Leaf Tackdown	0761	20103
5. Linework	0933	26148

12482-10 Couture Appliqué Leaf & Swirls 1		
1. Leaf Placement	0761	20103
2. Leaf Tackdown	0761	20103
3. Linework	0933	26148

12482-11 Couture Appliqué Leaf & Swirls 2		
1. Leaf Placement	0851	20118
2. Leaf Tackdown	0851	20118
3. Linework	0933	26148

12482-12 Couture Appliqué Leaf & Swirls 3		
1. Leaf Placement	0761	20103
2. Leaf Tackdown	0761	20103
3. Linework	0933	26148

	I	T
12482-13 Couture Appliqué Tree 1		
1. Tree Placement	0761	20103
2. Tree Tackdown	0761	20103
3. Linework	0933	26148

12482-14 Couture Appliqué Tree 2		
1. Tree Placement	0851	20118
2. Tree Tackdown	0851	20118
3. Linework	0933	26148

12482-15 Couture Appliqué Tree 3		
1. Tree Placement	0761	20103
2. Tree Tackdown	0761	20103
3. Linework	0933	26148

12482-16 Couture Appliqué Pumpkin		
1. Pumpkin Placement	0851	20118
2. Pumpkin Tackdown	0851	20118
3. Leaf Placement	0761	20103
4. Leaf Tackdown	0761	20103
5. Linework	0933	26148

12482-17 Couture Linework Leaf 1		
1. Single Color Design	0933	26148

12482-18 Couture Linework Leaf 2		
1. Single Color Design	0933	26148

12482-19 Couture Background Swirl 1		
1. Single Color Design	0761	20103

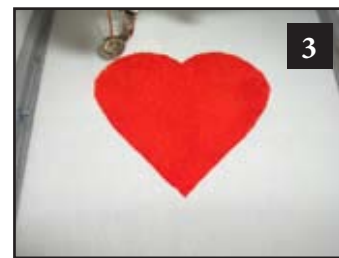
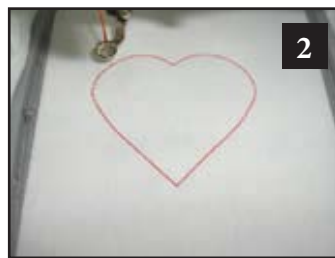
12482-20 Couture Background Swirl 2		
1. Single Color Design	0761	20103

Pre-Cut Appliqué Instructions

1. Print out the necessary pages from the PDF of the appliqué pattern(s).
2. Mark the right side of the pattern pieces so you'll know which direction to lay the pattern on the fabric.
3. Lightly spray the wrong side of the pattern pieces with temporary adhesive spray and allow it to set for a few minutes.
4. Place the pattern pieces on the right side of the fabric and carefully cut them out. **PHOTO 1**
5. Sew the placement stitch on your hooped fabric. **PHOTO 2**
6. With the paper still stuck to the right side of the appliqué fabric, spray the wrong side of the fabric with temporary spray adhesive.
7. Place the fabric inside the sewing placement stitch so that it matches the stitching line, and then remove the paper pattern. **PHOTO 3**
8. Sew the tackdown. **PHOTO 4**
9. Sew the remainder of the design and repeat for any remaining pieces. **PHOTO 5**

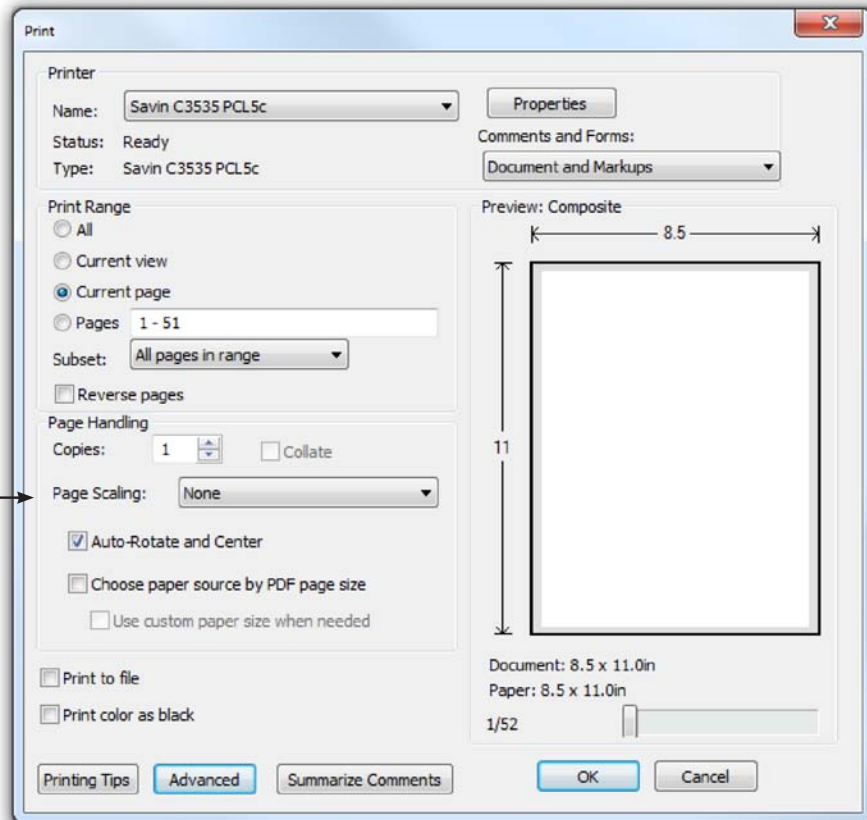
NOTE: The patterns are sized for the designs as they were made. If you resize the design, you will need to resize the pattern the same amount. You can print out the pattern at the normal size then copy it on a copy machine at the changed size. For example, resize the designs to 80%, resize the printed pattern to 80%.

TIP: When Printing the patterns, make sure that the “Fit to page” option is **UNCHECKED** in the Print Dialog Box. If this option is checked the printed patterns will not be actual size.



ATTENTION

When printing this document, any page scaling or page fitting options in your print dialog box must be turned OFF or set to NONE so that your files will print out at their actual size. Images not printed at actual size will not function as intended.



TO SAVE PAPER

Only print the desired image by navigating to the image's page, go to File > Print and select "Current page" in the print dialog box. Repeat for each desired image.

