



Note: Some designs in this collection may have been created using unique special stitches and/or techniques. To preserve design integrity when rescaling or rotating designs in your software, always rescale or rotate designs using the handles directly on-screen.



12504-01 Tile 1
4.78 X 7.27 in.
121.41 X 184.66 mm
1,725 St.



12504-02 Tile 2
4.81 X 7.27 in.
122.17 X 184.66 mm
4,396 St.



12504-03 Tile 3
4.78 X 7.28 in.
121.41 X 184.91 mm
3,390 St.



12504-04 Tile 4
4.78 X 7.28 in.
121.41 X 184.91 mm
3,920 St.



12504-05 Tile 5
4.77 X 7.28 in.
121.16 X 184.91 mm
4,075 St.



12504-06 Tile 6
4.78 X 7.28 in.
121.41 X 184.91 mm
2,000 St.



12504-07 Tile 7
4.76 X 7.27 in.
120.90 X 184.66 mm
7,653 St.



12504-08 Tile 8
4.78 X 7.28 in.
121.41 X 184.91 mm
7,142 St.



12504-09 Tile 9
4.77 X 7.26 in.
121.16 X 184.40 mm
8,895 St.



12504-10 Tile 10
4.76 X 7.17 in.
120.90 X 182.12 mm
6,337 St.



12504-11 Tile 11
4.77 X 7.28 in.
121.16 X 184.91 mm
2,285 St.



12504-12 Tile 12
4.78 X 7.26 in.
121.41 X 184.40 mm
3,887 St.

Design contains a loose fill.

Some solid areas shown are not stitched.

Design is larger than 5" (127 mm) in either direction.

Design is smaller than 1.5" (38.1 mm) in either direction.

Note: Some designs in this collection may have been created using unique special stitches and/or techniques. To preserve design integrity when rescaling or rotating designs in your software, always rescale or rotate designs using the handles directly on-screen.



12504-13 Tile 13
4.74 X 7.26 in.
120.40 X 184.40 mm
3,411 St.



12504-14 Tile 14
4.74 X 7.24 in.
120.40 X 183.90 mm
4,879 St.



12504-15 Tile 15
4.75 X 7.25 in.
120.65 X 184.15 mm
2,453 St.



12504-16 Tile 16
4.76 X 7.27 in.
120.90 X 184.66 mm
1,843 St.



12504-17 Tile 17
4.75 X 7.25 in.
120.65 X 184.15 mm
2,740 St.



12504-18 Tile 18
4.75 X 7.24 in.
120.65 X 183.90 mm
3,712 St.



12504-19 Tile 19
4.74 X 7.25 in.
120.40 X 184.15 mm
2,239 St.



12504-20 Tile 20
4.74 X 7.12 in.
120.40 X 180.85 mm
2,638 St.



12504-21 Tile 21
4.76 X 7.27 in.
120.90 X 184.66 mm
1,738 St.



12504-22 Tile 22
4.74 X 7.24 in.
120.40 X 183.90 mm
1,649 St.



12504-23 Tile 23
4.75 X 7.24 in.
120.65 X 183.90 mm
1,929 St.



12504-24 Tile 24
4.63 X 7.24 in.
117.60 X 183.90 mm
1,828 St.

Design contains a loose fill.

Some solid areas shown are not stitched.

Design is larger than 5" (127 mm) in either direction.

Design is smaller than 1.5" (38.1 mm) in either direction.

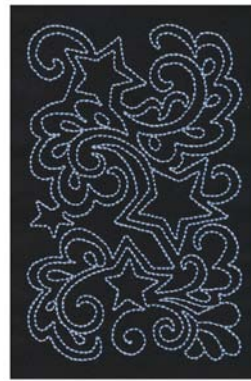
Note: Some designs in this collection may have been created using unique special stitches and/or techniques. To preserve design integrity when rescaling or rotating designs in your software, always rescale or rotate designs using the handles directly on-screen.



12504-25 Tile 25
4.75 X 7.13 in.
120.65 X 181.10 mm
1,767 St. **L**



12504-26 Linework Border 1
3.00 X 7.00 in.
76.20 X 177.80 mm
7,316 St. **S L**



12504-27 Linework Border 2
3.00 X 4.50 in.
76.20 X 114.30 mm
4,779 St. **S**



12504-28 Star Corner
3.00 X 3.00 in.
76.20 X 76.20 mm
1,284 St. **S**

S Design contains a loose fill.

L Some solid areas shown are not stitched.

L Design is larger than 5" (127 mm) in either direction.

S Design is smaller than 1.5" (38.1 mm) in either direction.

Listings below indicate color sample, stitching order and suggested thread color number. "I" refers to Isacord thread and "T" refers to Timeless thread. Colors beginning with 20501 refer to YLI Fine Metallics, 7 refer to Yenmet Metallic, 8 refer to YLI Variations Variegated Thread and 9 refer to Isacord Multicolor Variegated.

12504-01 Tile 1

	I	T
■ 1. Tree & Leaf Placement Stitch.....	0020	28151
■ 2. Tree & Leaf Tackdown.....	0020	28151
□ 3. Star.....	0015	28154
■ 4. Seam Stitch.....	0020	28151

12504-02 Tile 2

■ 1. Branch.....	0020	28151
■ 2. Tree & Leaf Placement Stitch.....	0020	28151
■ 3. Tree & Leaf Tackdown.....	0020	28151
□ 4. Stars.....	0015	28154
■ 5. Seam Stitch.....	0020	28151

12504-03 Tile 3

■ 1. Branch.....	0020	28151
■ 2. Tree & Leaf Placement Stitch.....	0020	28151
■ 3. Tree & Leaf Tackdown.....	0020	28151
■ 4. Seam Stitch.....	0020	28151

12504-04 Tile 4

■ 1. Branch.....	0020	28151
■ 2. Tree & Leaf Placement Stitch.....	0020	28151
■ 3. Tree & Leaf Tackdown.....	0020	28151
■ 4. Seam Stitch.....	0020	28151

12504-05 Tile 5

■ 1. Branches.....	0020	28151
■ 2. Tree Placement Stitch.....	0020	28151
■ 3. Tree Tackdown.....	0020	28151
□ 4. Star.....	0015	28154
■ 5. Seam Stitch.....	0020	28151

12504-06 Tile 6

■ 1. Design Placement Guides & Placement Guide 1.....	0020	28151
■ 2. Placement Guide 2.....	0020	28151
■ 3. Tackdown & Fold Line 2.....	0020	28151
■ 4. Placement Guide 3.....	0020	28151
■ 5. Tackdown & Fold Line 3.....	0020	28151
■ 6. Tree Placement Stitch.....	0020	28151
■ 7. Tree Tackdown.....	0020	28151
■ 8. Seam Stitch.....	0020	28151

12504-07 Tile 7

■ 1. Design Placement Guides & Placement Guide 1.....	0020	28151
■ 2. Placement Guide 2.....	0020	28151
■ 3. Tackdown & Fold Line 2.....	0020	28151
■ 4. Placement Guide 3.....	0020	28151
■ 5. Tackdown & Fold Line 3.....	0020	28151
■ 6. Placement Guide 4.....	0020	28151
■ 7. Tackdown & Fold Line 4.....	0020	28151
■ 8. Placement Guide 5.....	0020	28151
■ 9. Tackdown & Fold Line 5.....	0020	28151
■ 10. Placement Guide 6.....	0020	28151
■ 11. Tackdown & Fold Line 6.....	0020	28151
■ 12. Placement Guide 7.....	0020	28151
■ 13. Tackdown & Fold Line 7.....	0020	28151
■ 14. Placement Guide 8.....	0020	28151
■ 15. Tackdown & Fold Line 8.....	0020	28151
■ 16. Star Linework.....	7009	
■ 17. Branches.....	0020	28151
■ 18. Tree & Leaf Placement Stitch.....	0020	28151
■ 19. Tree & Leaf Tackdown.....	0020	28151
■ 20. Star Placement Stitch.....	0020	28151
□ 21. Star Tackdown.....	0015	28154
■ 22. Seam Stitch.....	0020	28151

12504-08 Tile 8

	I	T
■ 1. Design Placement Guides & Placement Guide 1.....	0020	28151
■ 2. Placement Guide 2.....	0020	28151
■ 3. Tackdown & Fold Line 2.....	0020	28151
■ 4. Placement Guide 3.....	0020	28151
■ 5. Tackdown & Fold Line 3.....	0020	28151
■ 6. Placement Guide 4.....	0020	28151
■ 7. Tackdown & Fold Line 4.....	0020	28151
■ 8. Branch.....	0020	28151
■ 9. Star Linework.....	7009	
■ 10. Star Placement Stitch.....	0020	28151
□ 11. Star Tackdown & Moonlight.....	0015	28154
■ 12. Leaf Placement Stitch.....	0020	28151
■ 13. Leaf Tackdown.....	0020	28151
■ 14. Seam Stitch.....	0020	28151

12504-09 Tile 9

□ 1. Moonlight.....	0015	28154
■ 2. Moon Placement Stitch.....	0020	28151
□ 3. Moon Tackdown.....	0015	28154
■ 4. Star & Moonlight Linework.....	7009	
■ 5. Leaf Placement Stitch.....	0020	28151
■ 6. Leaf Tackdown.....	0020	28151
■ 7. Seam Stitch.....	0020	28151

12504-10 Tile 10

■ 1. Design Placement Guides & Placement Guide 1.....	0020	28151
■ 2. Placement Guide 2.....	0020	28151
■ 3. Tackdown & Fold Line 2.....	0020	28151
■ 4. Placement Guide 3.....	0020	28151
■ 5. Tackdown & Fold Line 3.....	0020	28151
■ 6. Placement Guide 4.....	0020	28151
■ 7. Tackdown & Fold Line 4.....	0020	28151
■ 8. Star Linework.....	7009	
■ 9. Star Placement Stitch.....	0020	28151
□ 10. Small Star, Moonlight & Star Tackdown.....	0015	28154
■ 11. Branch.....	0020	28151
■ 12. Leaf Placement Stitch.....	0020	28151
■ 13. Leaf Tackdown.....	0020	28151
■ 14. Seam Stitch.....	0020	28151

12504-11 Tile 11

■ 1. Design Placement Guides & Placement Guide 1.....	0020	28151
■ 2. Placement Guide 2.....	0020	28151
■ 3. Tackdown & Fold Line 2.....	0020	28151
■ 4. Placement Guide 3.....	0020	28151
■ 5. Tackdown & Fold Line 3.....	0020	28151
■ 6. Placement Guide 4.....	0020	28151
■ 7. Tackdown & Fold Line 4.....	0020	28151
■ 8. Tree Placement Stitch.....	0020	28151
■ 9. Tree Tackdown.....	0020	28151
□ 10. Star.....	0015	28154
■ 11. Seam Stitch.....	0020	28151

12504-12 Tile 12

■ 1. Design Placement Guides & Placement Guide 1.....	0020	28151
■ 2. Placement Guide 2.....	0020	28151
■ 3. Tackdown & Fold Line 2.....	0020	28151
■ 4. Placement Guide 3.....	0020	28151
■ 5. Tackdown & Fold Line 3.....	0020	28151
■ 6. Placement Guide 4.....	0020	28151
■ 7. Tackdown & Fold Line 4.....	0020	28151
■ 8. Tree Placement Stitch.....	0020	28151
■ 9. Tree Tackdown.....	0020	28151
■ 10. Star Linework.....	7009	
■ 11. Star Placement Stitch.....	0020	28151
□ 12. Star Tackdown & Background Stars.....	0015	28154
■ 13. Seam Stitch.....	0020	28151

12504-13 Tile 13

	I	T
■ 1. Design Placement Guides & Placement Guide 1.....	0020	28151
■ 2. Placement Guide 2.....	0020	28151
■ 3. Tackdown & Fold Line 2.....	0020	28151
■ 4. Placement Guide 3.....	0020	28151
■ 5. Tackdown & Fold Line 3.....	0020	28151
■ 6. Placement Guide 4.....	0020	28151
■ 7. Tackdown & Fold Line 4.....	0020	28151
■ 8. Star Linework.....	7009	
■ 9. Leaf Placement Stitch.....	0020	28151
■ 10. Leaf Tackdown.....	0020	28151
■ 11. Star Placement Stitch.....	0020	28151
□ 12. Star Tackdown.....	0015	28154
■ 13. Seam Stitch.....	0020	28151

12504-14 Tile 14

■ 1. Design Placement Guides & Placement Guide 1.....	0020	28151
■ 2. Placement Guide 2.....	0020	28151
■ 3. Tackdown & Fold Line 2.....	0020	28151
■ 4. Placement Guide 3.....	0020	28151
■ 5. Tackdown & Fold Line 3.....	0020	28151
■ 6. Placement Guide 4.....	0020	28151
■ 7. Tackdown & Fold Line 4.....	0020	28151
■ 8. Placement Guide 5.....	0020	28151
■ 9. Tackdown & Fold Line 5.....	0020	28151
■ 10. Placement Guide 6.....	0020	28151
■ 11. Tackdown & Fold Line 6.....	0020	28151
■ 12. Star Linework.....	7009	
■ 13. Star Placement Stitch.....	0020	28151
□ 14. Star Tackdown.....	0015	28154
■ 15. Seam Stitch.....	0020	28151

12504-15 Tile 15

■ 1. Design Placement Guides & Placement Guide 1.....	0020	28151
■ 2. Placement Guide 2.....	0020	28151
■ 3. Tackdown & Fold Line 2.....	0020	28151
■ 4. Placement Guide 3.....	0020	28151
■ 5. Tackdown & Fold Line 3.....	0020	28151
■ 6. Placement Guide 4.....	0020	28151
■ 7. Tackdown & Fold Line 4.....	0020	28151
■ 8. Star Linework.....	7009	
■ 9. Star Placement Stitch.....	0020	28151
□ 10. Star Tackdown.....	0015	28154
■ 11. Seam Stitch.....	0020	28151

12504-16 Tile 16

■ 1. Design Placement Guides & Placement Guide 1.....	0020	28151
■ 2. Placement Guide 2.....	0020	28151
■ 3. Tackdown & Fold Line 2.....	0020	28151
■ 4. Placement Guide 3.....	0020	28151
■ 5. Tackdown & Fold Line 3.....	0020	28151
■ 6. Tree Placement Stitch.....	0020	28151
■ 7. Tree Tackdown.....	0020	28151
■ 8. Seam Stitch.....	0020	28151

Listings below indicate color sample, stitching order and suggested thread color number. "I" refers to Isacord thread and "T" refers to Timeless thread. Colors beginning with 20501 refer to YLI Fine Metallics, 7 refer to Yenmet Metallic, 8 refer to YLI Variations Variegated Thread and 9 refer to Isacord Multicolor Variegated.

12504-17 Tile 17

	I	T
1. Design Placement Guides & Placement Guide 1.....	0020	28151
2. Placement Guide 2.....	0020	28151
3. Tackdown & Fold Line 2.....	0020	28151
4. Placement Guide 3.....	0020	28151
5. Tackdown & Fold Line 3.....	0020	28151
6. Placement Guide 4.....	0020	28151
7. Tackdown & Fold Line 4.....	0020	28151
8. Placement Guide 5.....	0020	28151
9. Tackdown & Fold Line 5.....	0020	28151
10. Placement Guide 6.....	0020	28151
11. Tackdown & Fold Line 6.....	0020	28151
12. Placement Guide 7.....	0020	28151
13. Tackdown & Fold Line 7.....	0020	28151
14. Star Linework.....	7009	
15. Star Placement Stitch.....	0020	28151
16. Star Tackdown.....	0015	28154
17. Seam Stitch.....	0020	28151

12504-18 Tile 18

1. Design Placement Guides & Placement Guide 1.....	0020	28151
2. Placement Guide 2.....	0020	28151
3. Tackdown & Fold Line 2.....	0020	28151
4. Placement Guide 3.....	0020	28151
5. Tackdown & Fold Line 3.....	0020	28151
6. Placement Guide 4.....	0020	28151
7. Tackdown & Fold Line 4.....	0020	28151
8. Placement Guide 5.....	0020	28151
9. Tackdown & Fold Line 5.....	0020	28151
10. Placement Guide 6.....	0020	28151
11. Tackdown & Fold Line 6.....	0020	28151
12. Placement Guide 7.....	0020	28151
13. Tackdown & Fold Line 7.....	0020	28151
14. Star Linework.....	7009	
15. Star Placement Stitch.....	0020	28151
16. Star Tackdown.....	0015	28154
17. Seam Stitch.....	0020	28151

12504-19 Tile 19

1. Design placement Guides & Placement Guide 1.....	0020	28151
2. Placement Guide 2.....	0020	28151
3. Tackdown & Fold Line 2.....	0020	28151
4. Placement Guide 3.....	0020	28151
5. Tackdown & Fold Line 3.....	0020	28151
6. Placement Guide 4.....	0020	28151
7. Tackdown & Fold Line 4.....	0020	28151
8. Placement Guide 5.....	0020	28151
9. Tackdown & Fold Line 5.....	0020	28151
10. Placement Guide 6.....	0020	28151
11. Tackdown & Fold Line 6.....	0020	28151
12. Star Placement Stitch.....	0020	28151
13. Star Tackdown.....	0015	28154
14. Star Linework.....	7009	
15. Seam Stitch.....	0020	28151

12504-20 Tile 20

	I	T
1. Design Placement Guides & Placement Guide 1.....	0020	28151
2. Placement Guide 2.....	0020	28151
3. Tackdown & Fold Line 2.....	0020	28151
4. Placement Guide 3.....	0020	28151
5. Tackdown & Fold Line 3.....	0020	28151
6. Placement Guide 4.....	0020	28151
7. Tackdown & Fold Line 4.....	0020	28151
8. Placement Guide 5.....	0020	28151
9. Tackdown & Fold Line 5.....	0020	28151
10. Star Placement Stitch.....	0020	28151
11. Star Tackdown.....	0015	28154
12. Star Linework.....	7009	
13. Seam Stitch.....	0020	28151

12504-21 Tile 21

1. Design Placement Guides & Placement Guide 1.....	0020	28151
2. Placement Guide 2.....	0020	28151
3. Tackdown & Fold Line 2.....	0020	28151
4. Tree Placement Stitch.....	0020	28151
5. Tree Tackdown.....	0020	28151
6. Seam Stitch.....	0020	28151

12504-22 Tile 22

1. Design Placement Guides & Placement Guide 1.....	0020	28151
2. Placement Guide 2.....	0020	28151
3. Tackdown & Fold Line 2.....	0020	28151
4. Placement Guide 3.....	0020	28151
5. Tackdown & Fold Line 3.....	0020	28151
6. Placement Guide 4.....	0020	28151
7. Tackdown & Fold Line 4.....	0020	28151
8. Placement Guide 5.....	0020	28151
9. Tackdown & Fold Line 5.....	0020	28151
10. Seam Stitch.....	0020	28151

12504-23 Tile 23

1. Design Placement Guides & Placement Guide 1.....	0020	28151
2. Placement Guide 2.....	0020	28151
3. Tackdown & Fold Line 2.....	0020	28151
4. Placement Guide 3.....	0020	28151
5. Tackdown & Fold Line 3.....	0020	28151
6. Placement Guide 4.....	0020	28151
7. Tackdown & Fold Line 4.....	0020	28151
8. Placement Guide 5.....	0020	28151
9. Tackdown & Fold Line 5.....	0020	28151
10. Placement Guide 6.....	0020	28151
11. Tackdown & Fold Line 6.....	0020	28151
12. Seam Stitch.....	0020	28151

12504-24 Tile 24

	I	T
1. Design Placement Guides & Placement Guide 1.....	0020	28151
2. Placement Guide 2.....	0020	28151
3. Tackdown & Fold Line 2.....	0020	28151
4. Placement Guide 3.....	0020	28151
5. Tackdown & Fold Line 3.....	0020	28151
6. Placement Guide 4.....	0020	28151
7. Tackdown & Fold Line 4.....	0020	28151
8. Placement Guide 5.....	0020	28151
9. Tackdown & Fold Line 5.....	0020	28151
10. Seam Stitch.....	0020	28151

12504-25 Tile 25

1. Design Placement Guides & Placement Guide 1.....	0020	28151
2. Placement Guide 2.....	0020	28151
3. Tackdown & Fold Line 2.....	0020	28151
4. Placement Guide 3.....	0020	28151
5. Tackdown & Fold Line 3.....	0020	28151
6. Placement Guide 4.....	0020	28151
7. Tackdown & Fold Line 4.....	0020	28151
8. Placement Guide 5.....	0020	28151
9. Tackdown & Fold Line 5.....	0020	28151
10. Seam Stitch.....	0020	28151

12504-26 Linework Border 1

1. Linework.....	3652	14124
2. Seam Stitch.....	0020	28151

12504-27 Linework Border 2

1. Linework.....	3652	14124
2. Seam Stitch.....	0020	28151

12504-28 Star Corner

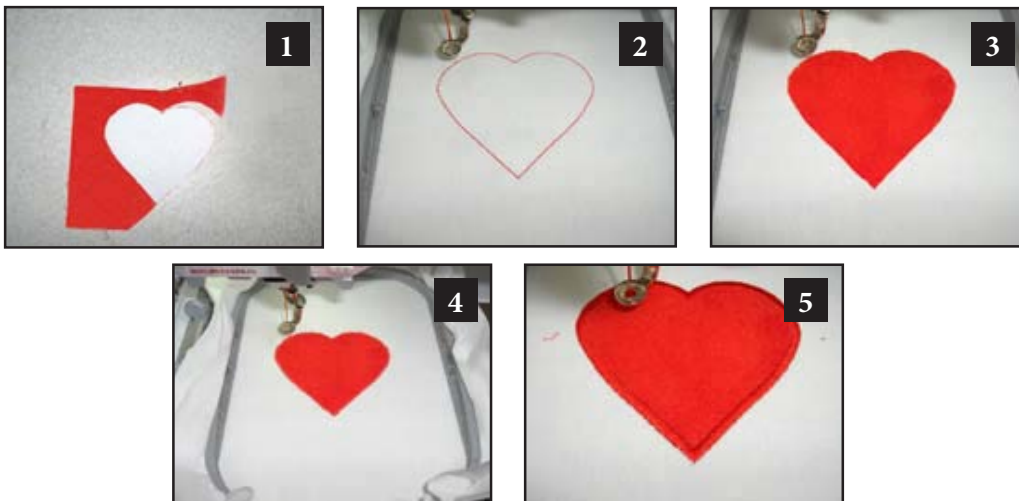
1. Stars.....	0020	28151
2. Seam Stitch.....	0020	28151

Pre-Cut Applique Instructions

1. Print out the necessary pages from the PDF of the appliqué pattern(s).
2. Mark the right side of the pattern pieces so you'll know which direction to lay the pattern on the fabric.
3. Lightly spray the wrong side of the pattern pieces with temporary adhesive spray and allow it to set for a few minutes.
4. Place the pattern pieces on the right side of the fabric and carefully cut them out. **PHOTO 1**
5. Sew the placement stitch on your hooped fabric. **PHOTO 2**
6. With the paper still stuck to the right side of the appliqué fabric, spray the wrong side of the fabric with temporary spray adhesive.
7. Place the fabric inside the sewing placement stitch so that it matches the stitching line, and then remove the paper pattern. **PHOTO 3**
8. Sew the tackdown. **PHOTO 4**
9. Sew the remainder of the design and repeat for any remaining pieces. **PHOTO 5**

NOTE: The patterns are sized for the designs as they were made. If you resize the design, you will need to resize the pattern the same amount. You can print out the pattern at the normal size then copy it on a copy machine at the changed size. For example, resize the designs to 80%, resize the printed pattern to 80%.

TIP: When Printing the patterns, make sure that the "Fit to page" option is **UNCHECKED** in the Print Dialog Box. If this option is checked the printed patterns will not be actual size.



Fabric Needed:

- 5 Assorted light green scraps, approximately 5" by 8"
- 5 Assorted medium green scraps, approximately 5" by 8"
- 5 Assorted dark green scraps, approximately 5" by 8"
- 10 Assorted light blue (turquoise) scraps, approximately 5" by 8"
- 10 Assorted Medium Blue scraps, approximately 5" by 8"
- 10 Assorted dark blue scraps, approximately 5" by 8"
- 1 fat quarter (or ¼ yard) medium blue fabric for corner tiles on border*
- 1 fat quarter (or ¼ yard) white fabric (for appliqué stars and moon)
- 3 ½ yard black fabric for borders, appliqué, backing and binding*

*These amounts assume that each border design is embroidered in a separate hooping.

Use a ¼" seam allowance for all seams unless otherwise directed.

Additional supplies:

- Lightweight cotton batting, approximately 42" by 30"
- Lightweight tear-away stabilizer
- Fusible cut-away mesh stabilizer
- Temporary adhesive spray
- Appliqué iron
- Smoke-colored monofilament thread
- Black cotton sewing thread
- Embroidery thread
- Bobbin thread
- Quilting ruler
- Cutting mat
- Rotary Cutter
- Embroidery Machine
- Embroidery Collection #12504
- Sewing machine with ¼" foot and regular sewing foot

Optional: Teflon Sheet

Optional: Glue Stick

Quilting in the Hoop Instructions

For designs 12504-06 – 12504-08 and 12504-10 – 12504-25 refer to the paper piecing guides for fabric placement order.

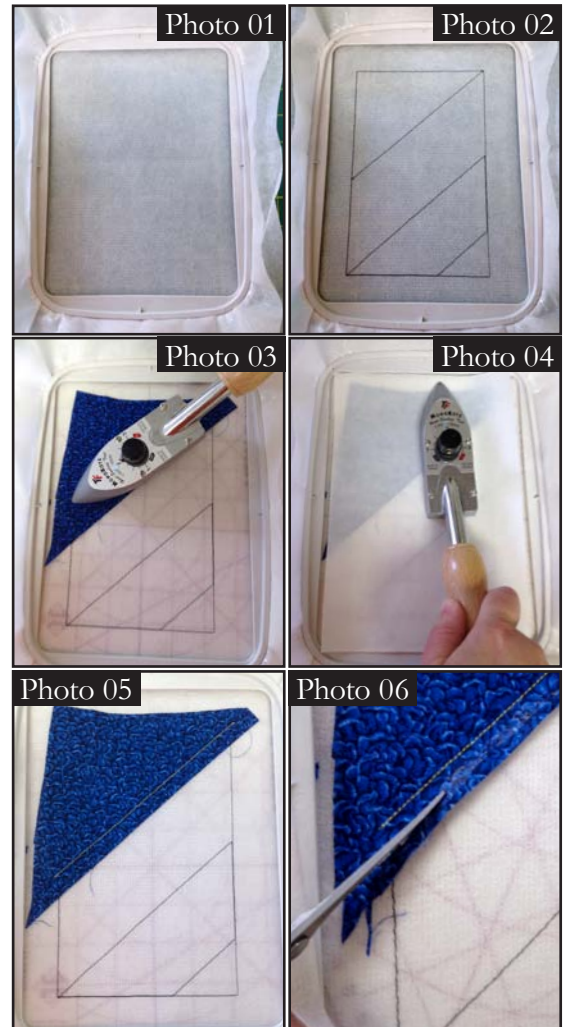
1. Lightly spray a piece of tear-away stabilizer with temporary adhesive spray.
2. Place a piece of fusible mesh cut-away stabilizer **fusible side up** on top of the sprayed tear-away. The fusible face of the stabilizer must be exposed.
3. Hoop the two layers of stabilizer together, with the fusible side of the cut-away stabilizer **facing up in the hoop**. See **Photo 01**.
4. Place the hoop onto the machine and stitch the first color change, which will be the placement guide for your fabrics. See **Photo 02**.
5. Remove the hoop from the machine, but do not remove the stabilizer from the hoop.
6. Place the hoop onto an ironing surface.
7. Cut the first piece of fabric slightly larger than the fabric area #1. The fabric should be at least ¼" larger than the placement area on all sides.
8. Place the fabric over the placement area. Lightly press into place with a small appliqué iron. See **Photo 03**.

TIP: Place a Teflon pressing sheet over the hoop area before pressing. This will keep the iron from accidentally touching the fusible area not covered by fabric. The fusible will not stick to the Teflon. See **Photo 04**.

9. Return the hoop to the machine and stitch the next color change (Placement Stitch #2). This will serve as a guide for placement of the next fabric. See **Photo 05**.

Note: The placement line is shown here in yellow to make it easier to see. Stitch this placement line in a dark color for dark fabrics, or a light color for light fabrics.

10. Trim the fabric to a ¼" seam allowance from this placement line. See **Photo 06**.



11. Cut a second piece of fabric, slightly larger than fabric area #2. The fabric should be at least 1/4" larger than the placement area on all sides. **See Photo 07.**

12. *Optional:* Apply washable glue stick lightly to the seam allowance before the next step. This will keep the fabric from shifting while you stitch the seam line. **See Photo 08.**

13. Place the second piece of fabric right sides together with the first fabric along the seam line. The edge of the fabric should extend to or past the seam allowance of the first fabric. **See Photo 09.**

TIP: Before stitching the next color change, hold the fabric along the seam placement line and flip back onto stabilizer to ensure that the fabric is placed properly.

14. If glue stick was used, lightly smooth fabric onto seam allowance to bond fabrics together.

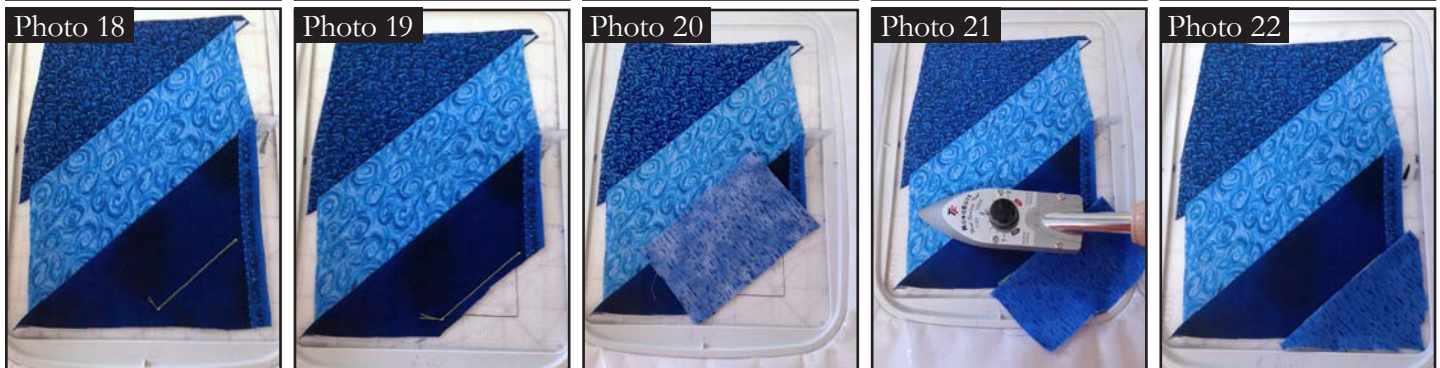
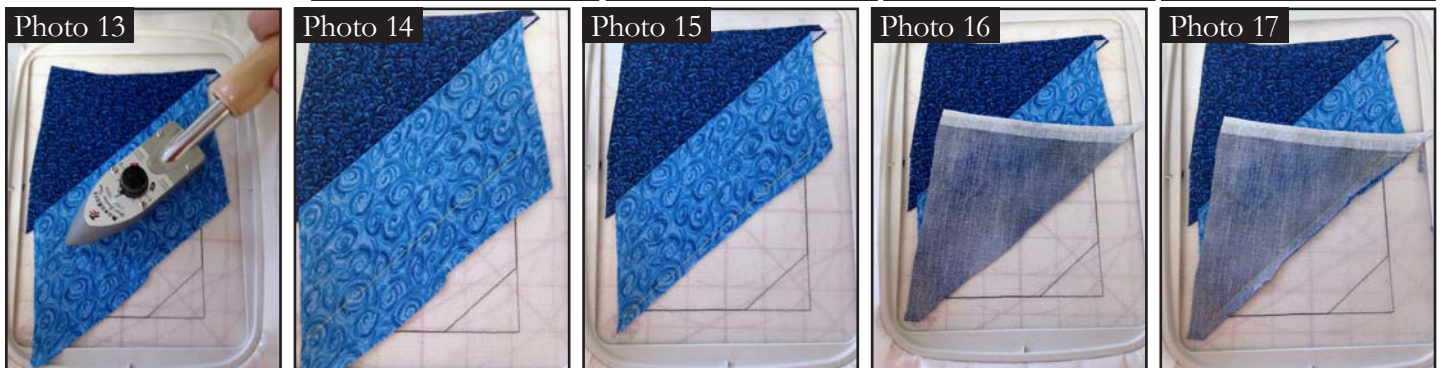
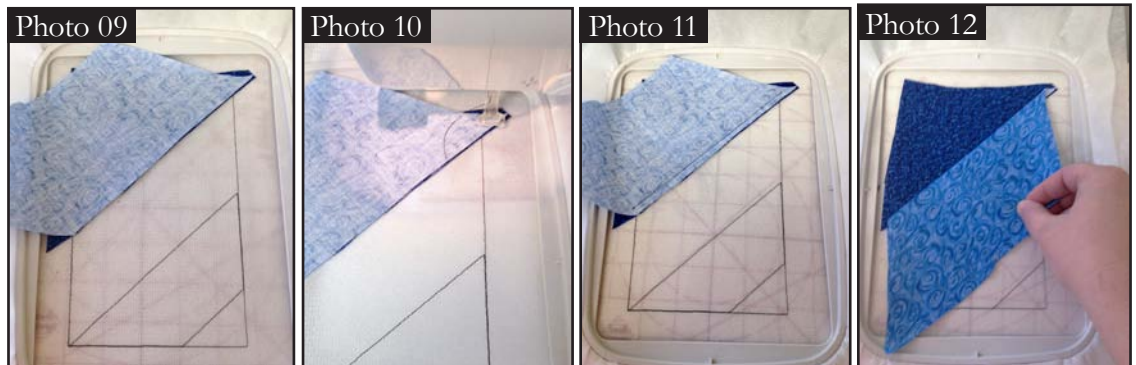
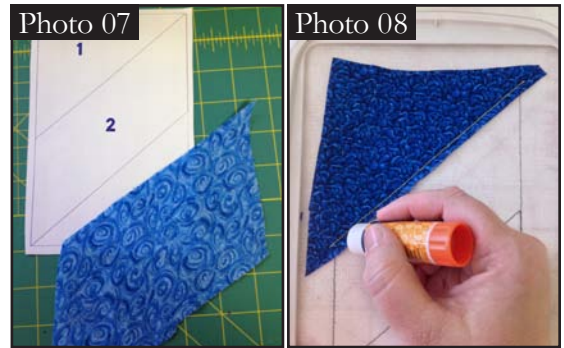
15. Place the hoop onto the machine and stitch the next color change, which will be the seam line. Remove the hoop from the machine. **See Photos 10 and 11.**

16. If needed, trim the second fabric to match the 1/4" seam allowance.

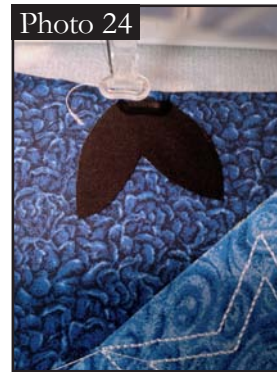
17. Fold back the second fabric and smooth onto the stabilizer, covering placement area #2. **See Photo 12.**

18. Press the second piece of fabric into place with the appliqué iron. **See Photo 13.**

19. Repeat steps 10 - 18 for each fabric piece in the block. The example block has four pieces. **See Photos 14 - 22.**



20. Stitch the remaining color changes, including any appliqué pieces. Follow the included basic appliqué instructions for appliqué pieces. **See Photos 23-25.**



21. The final color change will stitch the seam line. Stitch the seam line in a color that will easily blend with your fabrics. The seam line in the photo was stitched in white to make it easier to see. **See Photo 26.**



22. When the design is complete, remove it from the hoop. Do not remove the stabilizer.

23. Trim the finished piece to 1/4" from the seam line on all four sides. **See Photos 27-28.**

Moonlit Nightscape Quilt Instructions

1. Set aside the backing and binding fabric. From the black fabric, cut:
 - a. Four 2 1/2" strips from the full width of fabric.
 - b. One 42" by 30" piece for backing.
2. Embroider your designs. **Note:** For best results, do not remove stabilizer after embroidery. The added stiffness makes pieces easier to align when stitching together.
 - a. Stitch one each of designs # 12504-01 – 12504-25, following instructions included with the collection.
 - b. Stitch four of design # 12504-28, the corner tiles for the border, onto medium blue fabric.
 - c. Stitch ten of design # 12504-26, the tiles for the side borders, onto black fabric.
 - d. Stitch ten of design # 12504-27, the tiles for the top and bottom borders, onto black fabric.
3. Cut the blocks.
 - a. Using a quilting ruler and rotary cutter, trim all 49 tiles (25 center tiles and 24 border tiles) 1/4" from the seam line. **See Photo 01.**
 - b. Arrange the 25 center tiles onto a work surface or design wall as they will be when assembled. This will make it easier to keep tiles organized. **See Photo 02.**
4. Assemble the rows of the inner tiles.
 - a. Pick up two adjacent tiles from the bottom row. **See Photo 03.**
 - b. Making sure that edges, and seam lines align, place the two pieces right sides together. Pin in place if desired.
 - c. Stitch the two tiles together, using a quarter inch foot.
 - i. To prevent seam lines from showing on the front of quilt, the 1/4" seam should land just to the inside of the seam lines stitched on your tiles. **See Photo 04.**
 - ii. Add the next tile in the row to the first two tiles. **See Photo 05.**
 - iii. Continue to sew all the tiles of the bottom row together in the same manner.
 - iv. Press the seam allowances of the bottom row so that all of the seam allowances are all pressed in one direction (all to the left, or all to the right). **See Photo 06.**
 - v. Return the now-assembled bottom row to your design wall or workspace. **See Photo 07.**
 - vi. Repeat for all five rows. **See Photo 08.**
5. Stitch the rows of inner tiles together.
 - a. The seam allowances between the tiles in each row should be pressed in the opposite direction of the previous row. (Bottom row all press to the right, next row all pressed to the left, etc.). This will make sewing the rows together easier. **See Photo 09.**



Photo 01

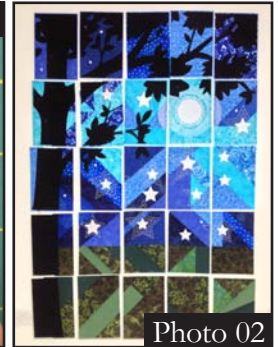


Photo 02



Photo 03

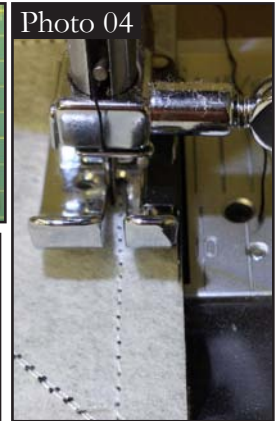


Photo 04



Photo 05



Photo 06



Photo 07

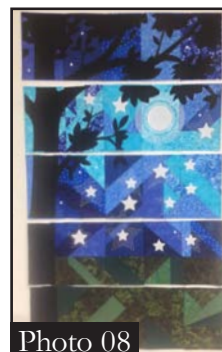


Photo 08

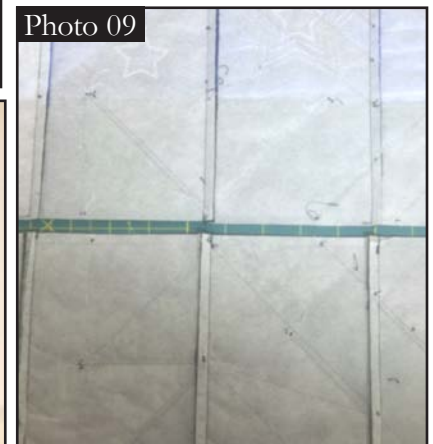
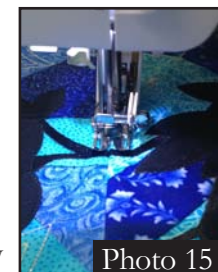
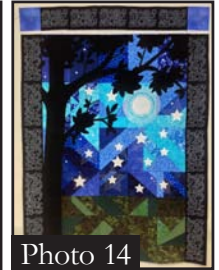
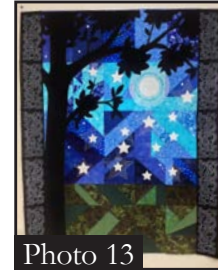
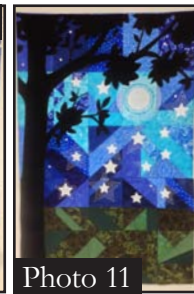
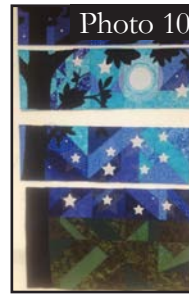


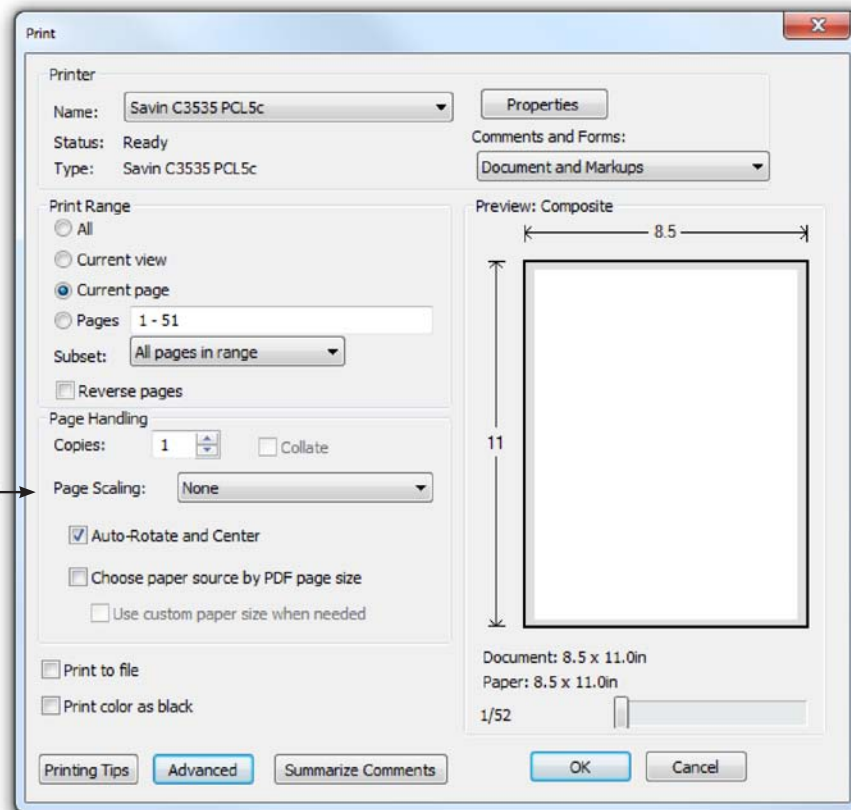
Photo 09

- b. Sew the bottom row to the next row, aligning the edges and all seams. Use a 1/4" seam allowance and stitch just to the inside of the seam line as described above. **See Photo 10.**
 - c. Repeat until all five rows are stitched together, forming nightscape centerpiece. **See Photo 11.**
 - d. Press the seam allowances of the rows toward the bottom of the quilt.
6. Add the borders.
- a. Create a side borders by stitching 5 of the side borders (Design #12504-26) together along the short edge. Align the seam lines as described above, and be sure to orient the tiles in the same direction. Repeat for the other side border. **See Photo 12.**
 - b. Press the seam allowances of the borders opposite the center tiles. Stitch the side borders to the center tiles, aligning the seams. **See Photo 13.**
 - c. Create the top border by stitching five of the smaller border tile (Design #12504-27) together along the short edge. Align the seam lines as described above, and be sure to orient the tiles in the same direction. Repeat for the other side border. Press the seam allowances toward the border.
 - d. Add two blue corner tiles to each of these borders, making sure to orient the star as desired in each corner. **See Photo 14.**
 - e. Press seam allowances as needed for easy assembly. Stitch the top and bottom borders to the top and bottom of the quilt.
7. Quilt the layers together.
- a. Using temporary adhesive spray, baste together the quilt backing, batting, and top, centering the top over the batting and backing, which will be slightly larger.
 - b. Quilt the layers as desired. The recommended method is to quilt with a zig-zag stitch over the intersections of the tiles, using black cotton thread in the bobbin and smoke-colored monofilament thread in the needle. **See Photo 15.**
 - c. Trim batting and backing to match the quilt top. **See Photo 16.**
8. Add the binding.
- a. Stitch the four 2 1/2" strips together to form one long strip.
 - b. Fold in half and press this strip lengthwise.
 - c. Sew the binding to your quilt, using a 1/4" seam, aligning the raw edges of the binding to the raw edges of the quilt. **See Photo 17.**
 - d. Wrap the folded edge of the binding to the backside of the quilt and pin or clip in place.
 - e. Machine or hand-stitch the wrapped binding in place. **See Photo 18.**



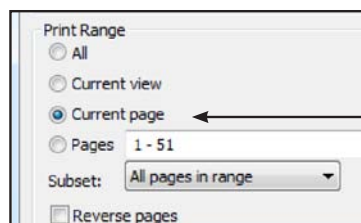
ATTENTION

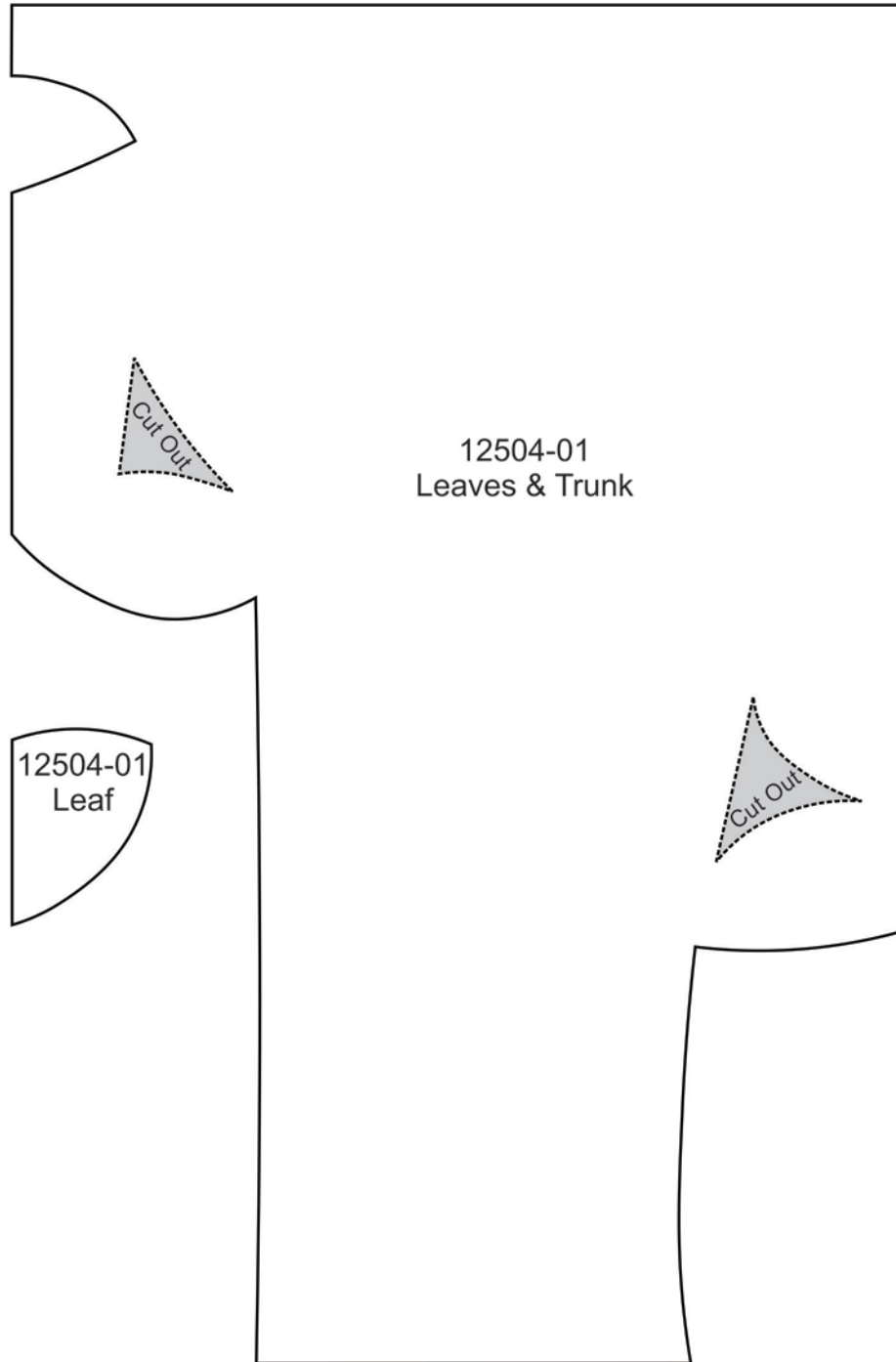
When printing this document, any page scaling or page fitting options in your print dialog box must be turned OFF or set to NONE so that your files will print out at their actual size. Images not printed at actual size will not function as intended.

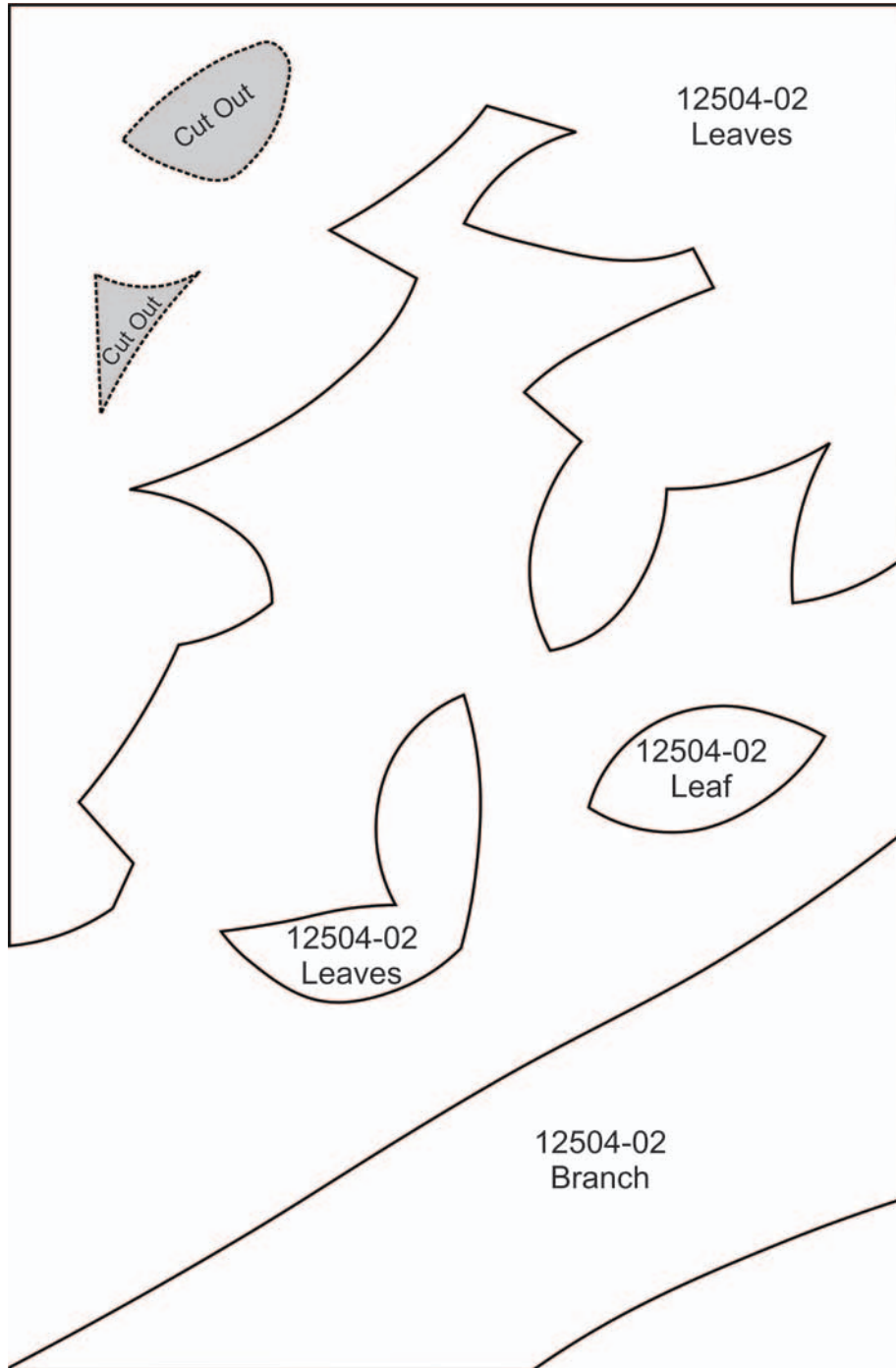


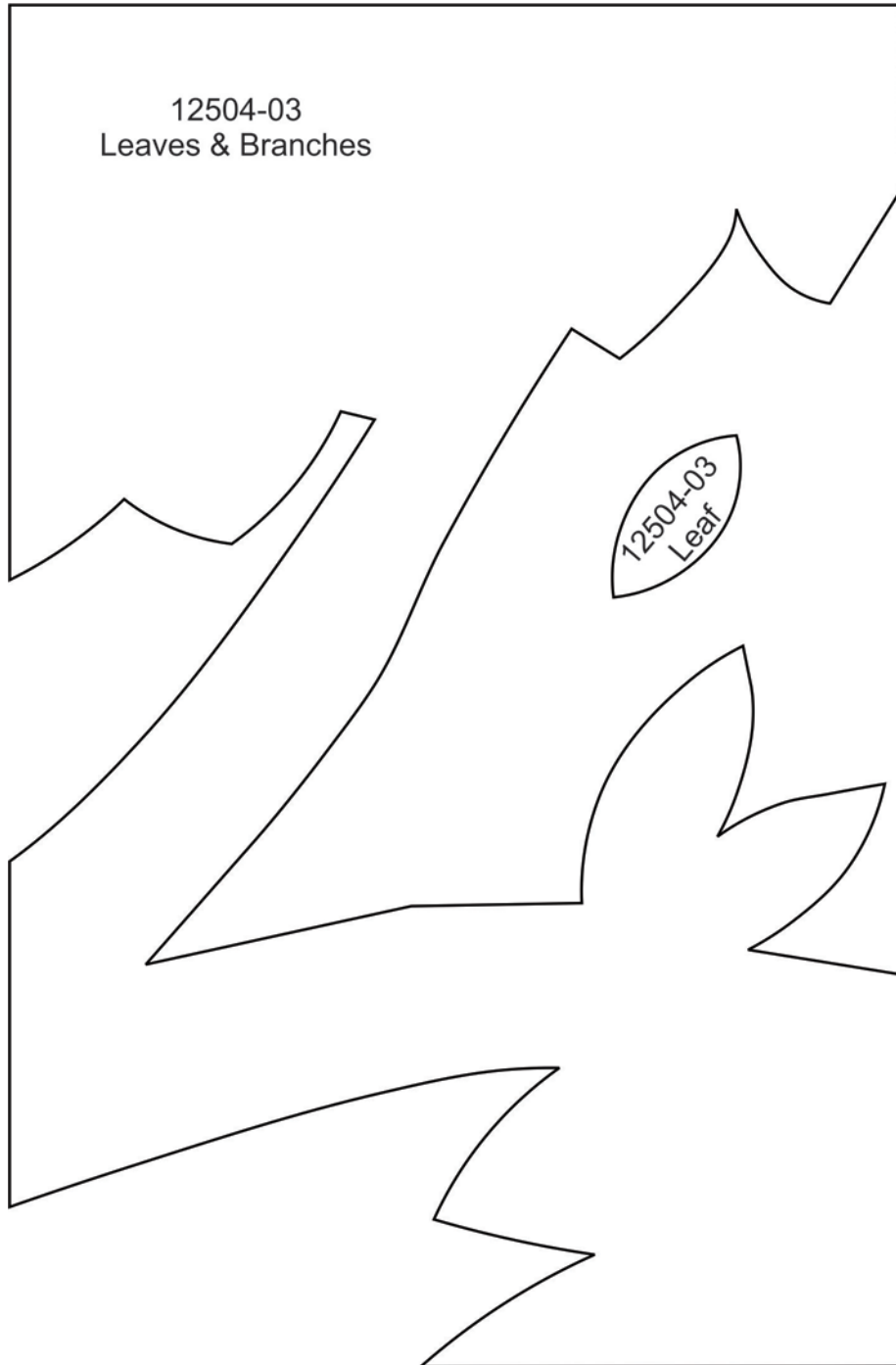
TO SAVE PAPER

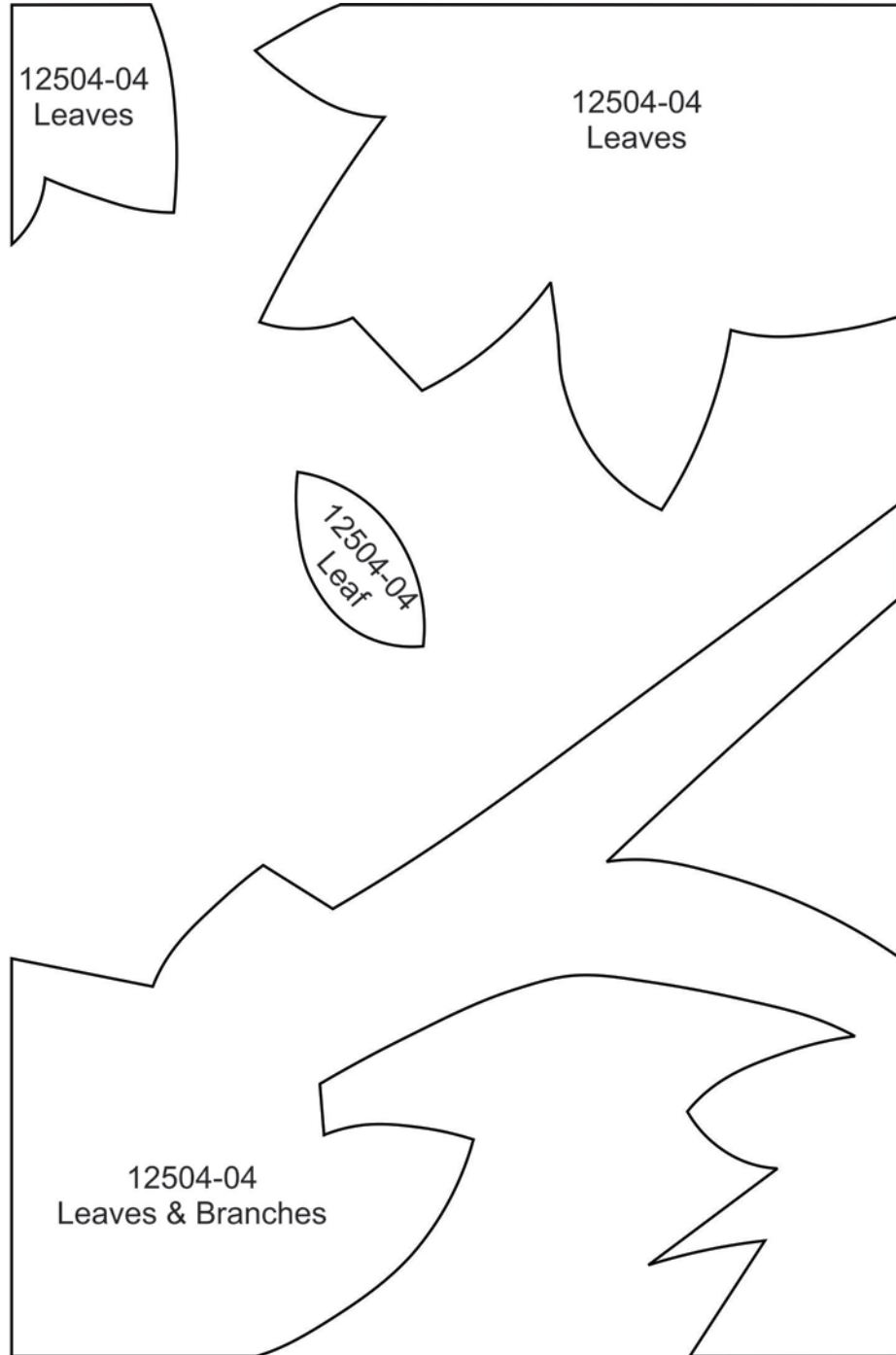
Only print the desired image by navigating to the image's page, go to File > Print and select "Current page" in the print dialog box. Repeat for each desired image.

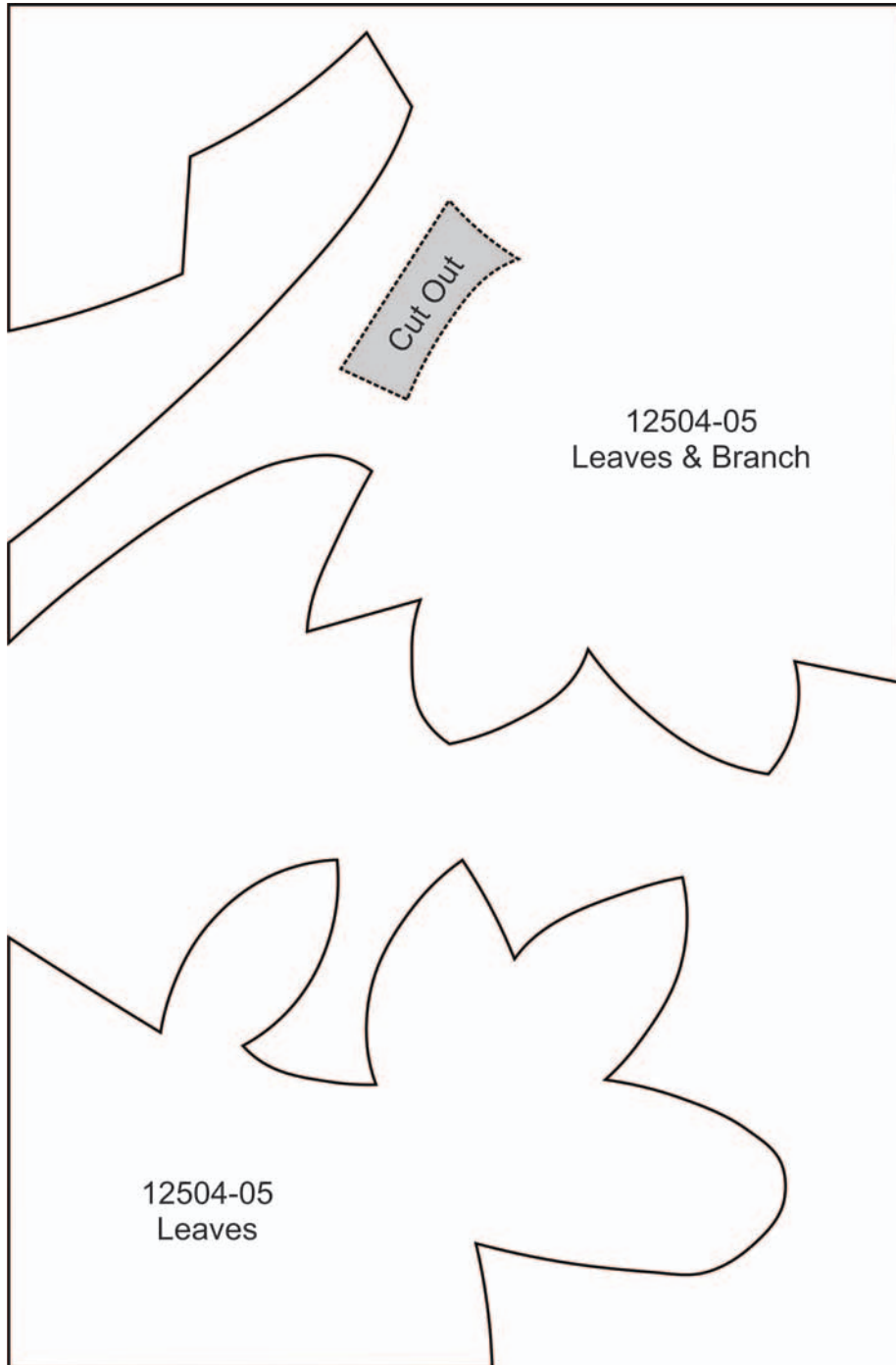


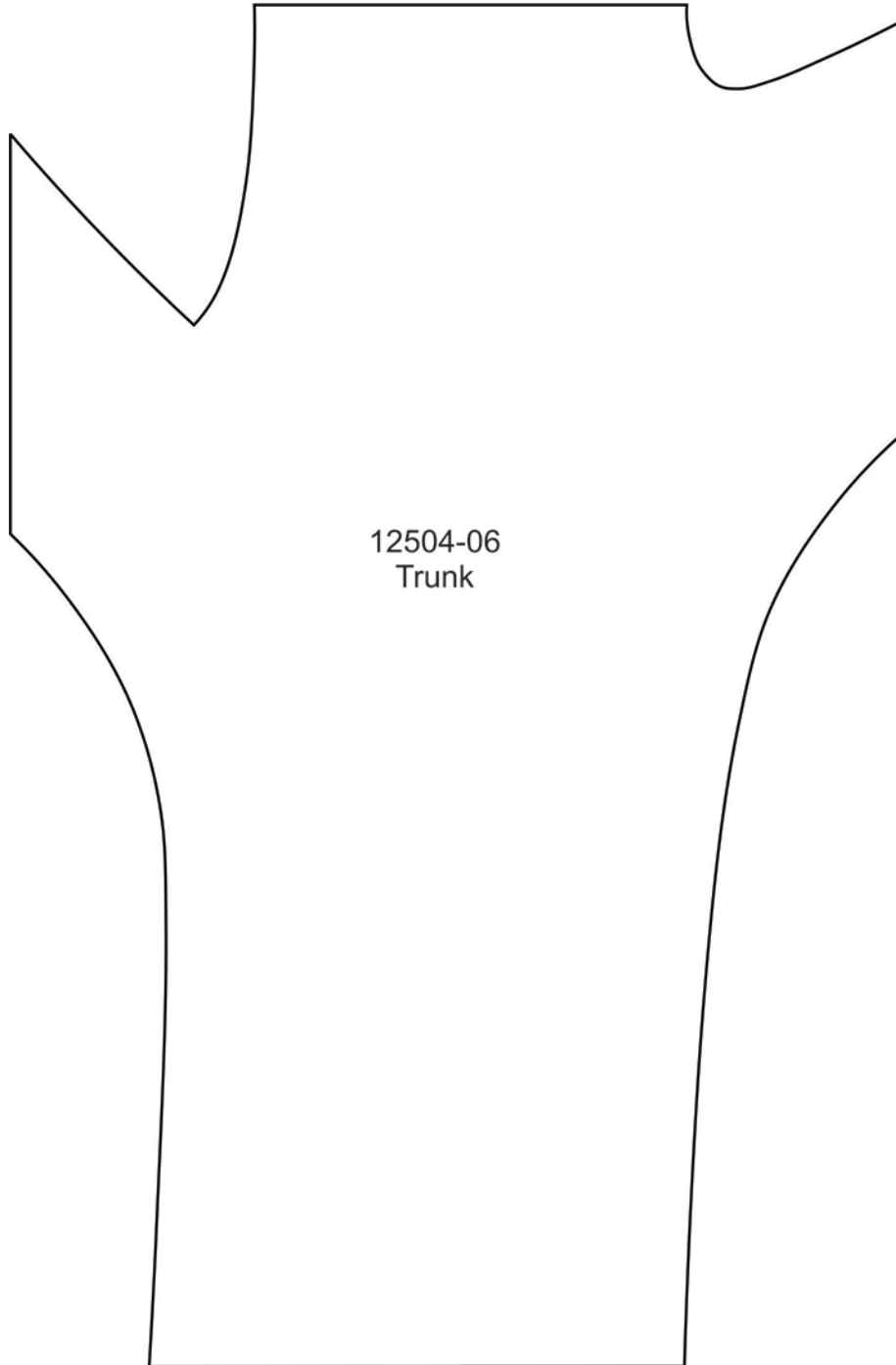


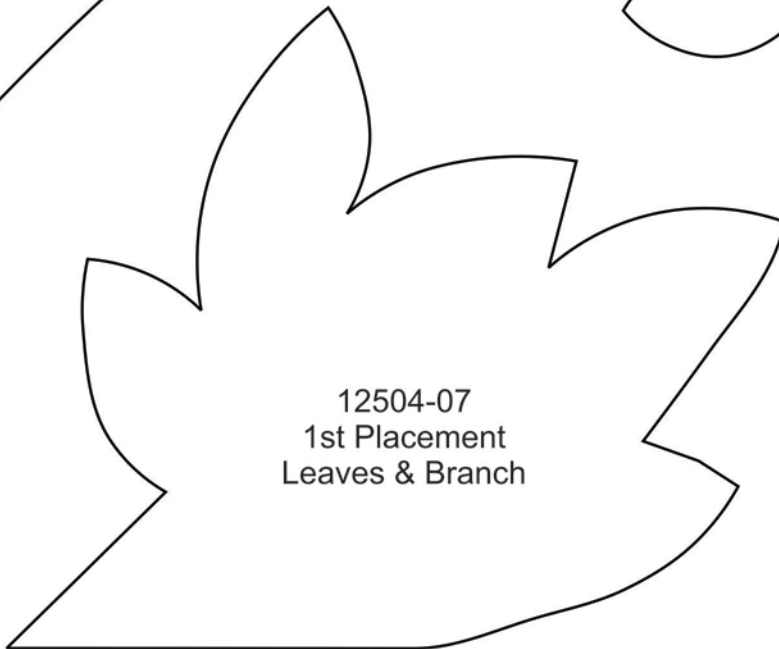
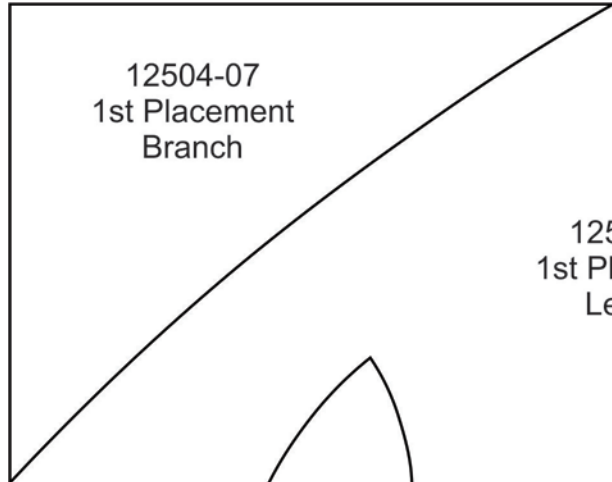


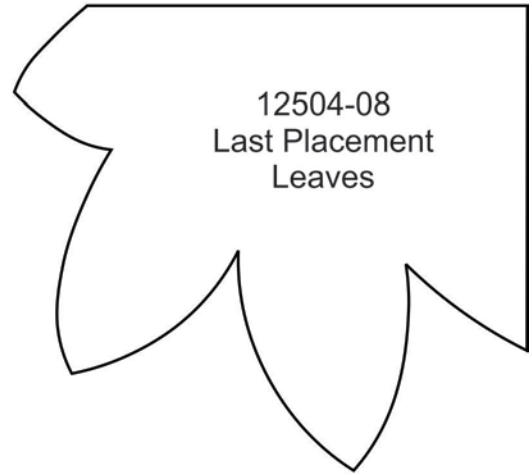
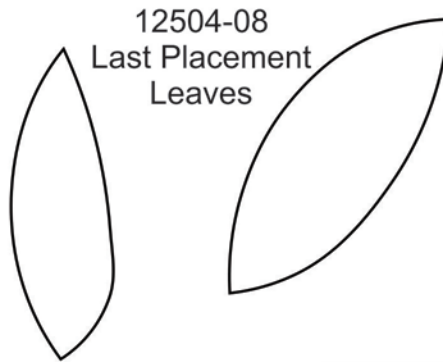


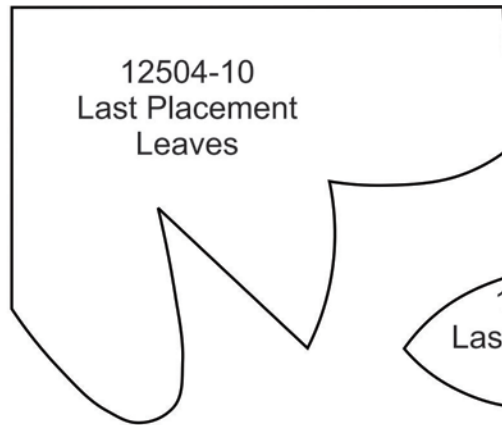
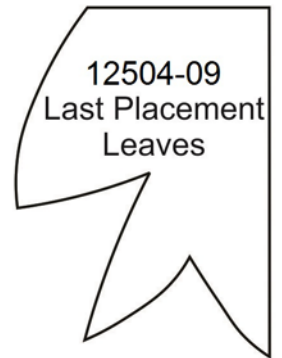
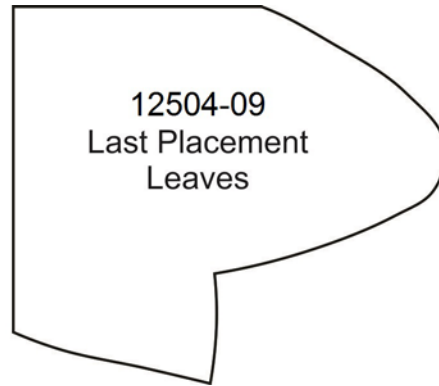
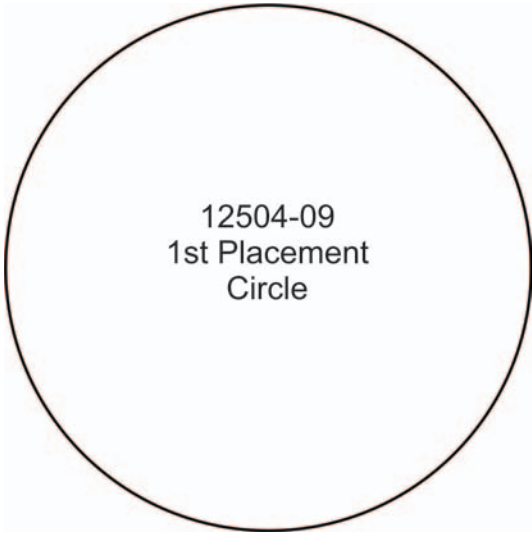


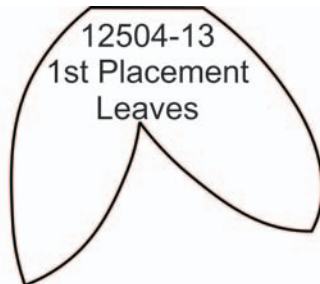
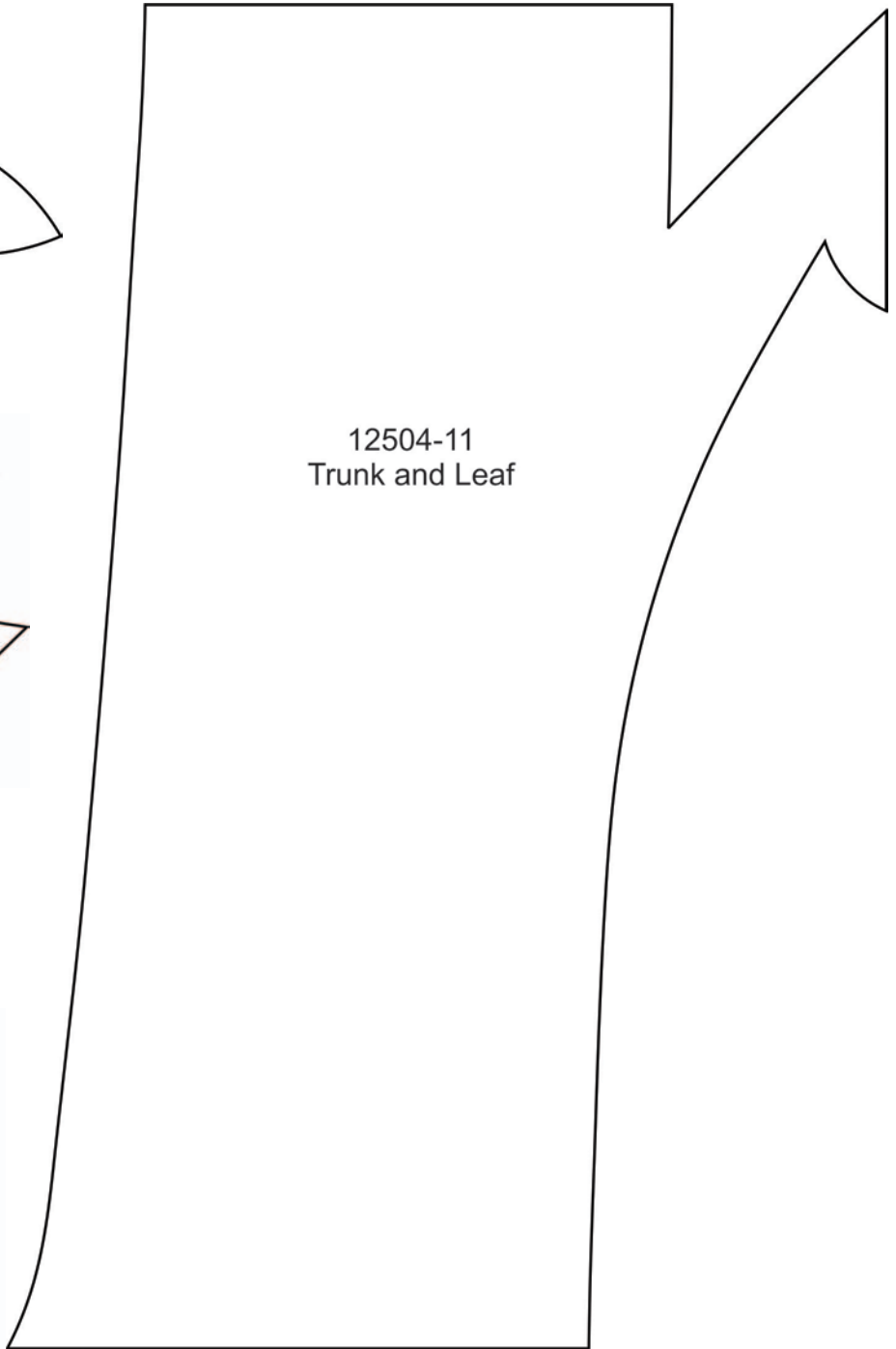
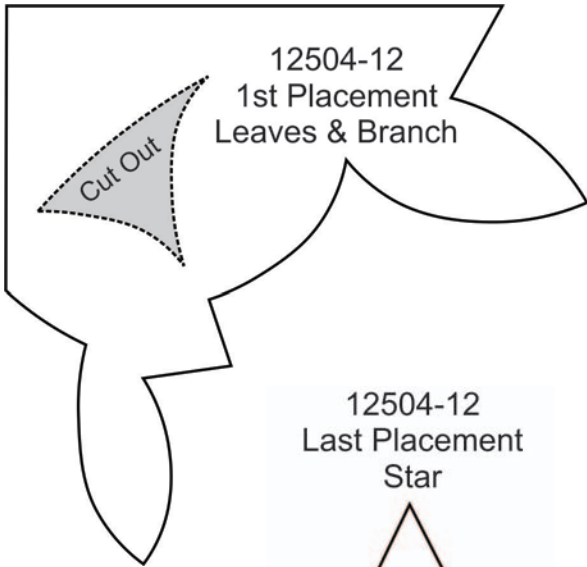










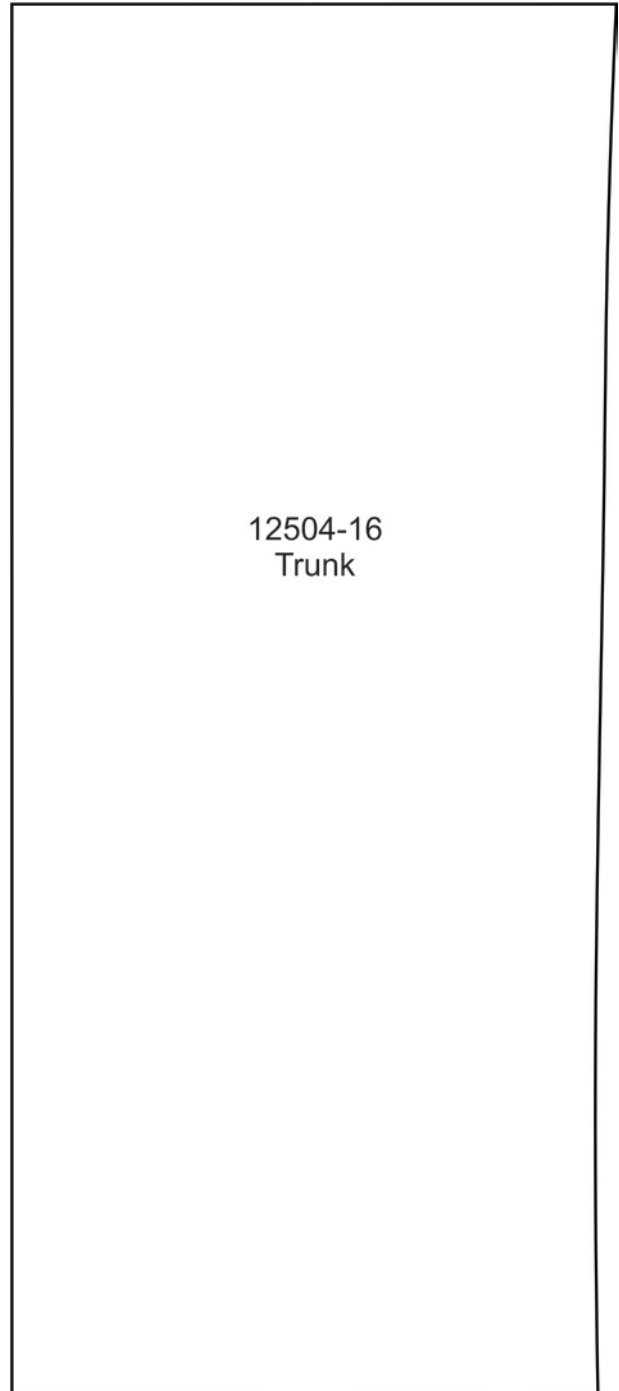




12504-14
Stars



12504-15
Stars



12504-16
Trunk

