

Note: Some designs in this collection may have been created using unique special stitches and/or techniques. To preserve design integrity when rescaling or rotating designs in your software, always rescale or rotate designs using the handles directly on-screen.



12509-01 Long Dragon Jumbo Appliqué
7.22 X 10.11 in.
183.39 X 256.79 mm
45,401 St. ⚡ L



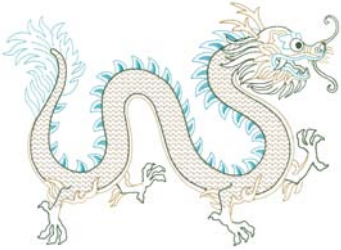
12509-02 Tall Dragon Jumbo Appliqué
7.15 X 9.96 in.
181.61 X 252.98 mm
45,679 St. ⚡ L



12509-03 Long Dragon Appliqué
5.48 X 7.02 in.
139.19 X 178.31 mm
24,556 St. ⚡ L



12509-04 Tall Dragon Appliqué
4.45 X 7.49 in.
113.03 X 190.25 mm
24,194 St. ⚡ L



12509-05 Long Dragon Jumbo Linework
7.18 X 10.06 in.
182.37 X 255.52 mm
22,191 St. ⚡⚡ L



12509-06 Tall Dragon Jumbo Linework
7.15 X 9.94 in.
181.61 X 252.48 mm
24,441 St. ⚡⚡ L



12509-07 Long Dragon Linework
5.49 X 7.06 in.
139.45 X 179.32 mm
14,813 St. ⚡⚡ L



12509-08 Tall Dragon Linework
4.44 X 7.42 in.
112.78 X 188.47 mm
14,570 St. ⚡⚡ L

⚡ Design contains a loose fill.

⚡ Some solid areas shown are not stitched.

L Design is larger than 5" (127 mm) in either direction.

S Design is smaller than 1.5" (38.1 mm) in either direction.

It is a violation of Copyright law to make and distribute copies of electronic designs or artwork.

Electronic designs are licensed to the original purchaser for use at one location. ©2014 OESD, LLC. All rights reserved.

Listings below indicate color sample, stitching order and suggested thread color number. "I" refers to Isacord thread and "T" refers to Timeless thread. Colors beginning with 20501 refer to YLI Fine Metallics, 7 refer to Yenmet Metallic, 8 refer to YLI Variations Variegated Thread and 9 refer to Isacord Multicolor Variegated.

12509-01 Long Dragon Jumbo Appliqué		
	I	T
1. Body Placement Stitch	1114	24124
2. Body Cut Line & Tackdown	1114	24124
3. Dark Pink Tail & Spine	2320	10157
4. Scales	7014	
5. Limbs & Whiskers	0506	22133
6. Face	1114	24124
7. Dark Red Cover Stitch & Detail	1912	12133
8. Dark Green Belly	5643	18196
9. Light Yellow Horns & Mouth	0520	22103
10. Yellow Face Detail	0506	22133

12509-02 Tall Dragon Jumbo Appliqué		
	I	T
1. Body Placement Stitch	5912	18130
2. Body Cut Line & Tackdown	5912	18130
3. Face	5912	18130
4. Scales	7014	
5. Tan Cover Stitch & Detail	0552	20145
6. Light Yellow Face & Chest Linework	0520	22103
7. Orange Cover Stitch & Whiskers	1114	24124
8. Dark Red Cover Stitch & Detail	1912	12133
9. Light Yellow Body Linework	0520	22103

12509-03 Long Dragon Appliqué		
	I	T
1. Horns & Leg Detail	5643	18196
2. Body Placement Stitch	1912	12133
3. Body Cut Line & Tackdown	1912	12133
4. Head	1912	12133
5. Scales	7014	
6. Tongue	2550	10142
7. Light Green Mouth	5912	18130
8. Face Detail	0520	22103
9. Orange Cover Stitch & Detail	1114	24124
10. Eye	0015	28154
11. Dark Green Face & Leg Detail	5643	18196
12. Yellow Body & Mouth Linework	0520	22103

12509-04 Tall Dragon Appliqué		
	I	T
1. Tan Linework	0552	20145
2. Tongue	2250	10103
3. Body Placement Stitch	0506	22133
4. Body Cut Line & Tackdown	0506	22133
5. Scales	7014	
6. Face	0506	22133
7. Chest & Leg Detail	2550	10142
8. Dark Green Cover Stitch & Detail	5643	18196
9. Dark Pink Cover Stitch & Detail	2320	10157
10. Pink Mouth & Nose	2550	10142
11. Light Green Lips & Horns	5912	18130
12. White Eyes & Tooth	0015	28154
13. Dark Green Eyes	5643	18196

12509-05 Long Dragon Jumbo Linework		
	I	T
1. Tail, Spine & Eye Lid	4430	18158
2. Scales	7011	
3. Tan Detail	0552	20145
4. Dark Green Detail	5643	18196
5. Lips	4430	18158

12509-06 Tall Dragon Jumbo Linework		
	I	T
1. Scales	7011	
2. Light Blue Detail	4430	18158
3. Tan Detail	0552	20145
4. Dark Green Detail	5643	18196

12509-07 Long Dragon Linework		
	I	T
1. Scales	7011	
2. Light Blue Detail	4430	18158
3. Dark Green Detail	5643	18196
4. Tan Detail	0552	20145

12509-08 Tall Dragon Linework		
	I	T
1. Scales	7011	
2. Light Blue Face & Chest	4430	18158
3. Dark Green Detail	5643	18196
4. Light Blue Tail & Leg Detail	4430	18158
5. Face & Background Detail	0552	20145



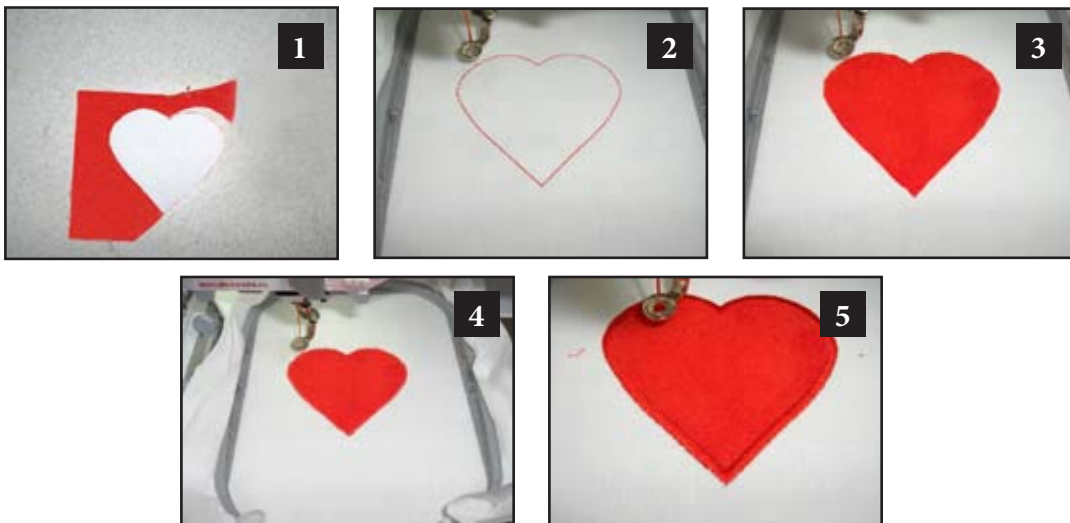
Change the look of these dragons by simply changing the thread colors.



1. Print out the necessary pages from the PDF of the appliqué pattern(s).
2. Mark the right side of the pattern pieces so you'll know which direction to lay the pattern on the fabric.
3. Lightly spray the wrong side of the pattern pieces with temporary adhesive spray and allow it to set for a few minutes.
4. Place the pattern pieces on the right side of the fabric and carefully cut them out. **PHOTO 1**
5. Sew the placement stitch on your hooped fabric. **PHOTO 2**
6. With the paper still stuck to the right side of the appliqué fabric, spray the wrong side of the fabric with temporary spray adhesive.
7. Place the fabric inside the sewing placement stitch so that it matches the stitching line, and then remove the paper pattern. **PHOTO 3**
8. Sew the tackdown. **PHOTO 4**
9. Sew the remainder of the design and repeat for any remaining pieces. **PHOTO 5**

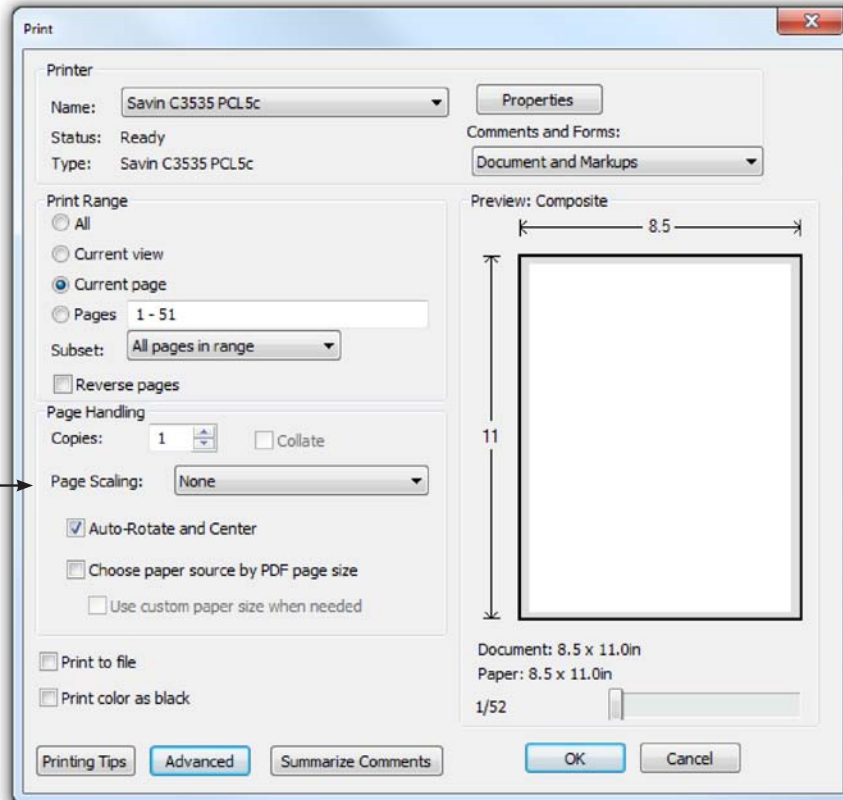
NOTE: The patterns are sized for the designs as they were made. If you resize the design, you will need to resize the pattern the same amount. You can print out the pattern at the normal size then copy it on a copy machine at the changed size. For example, resize the designs to 80%, resize the printed pattern to 80%.

TIP: When Printing the patterns, make sure that the “Fit to page” option is **UNCHECKED** in the Print Dialog Box. If this option is checked the printed patterns will not be actual size.



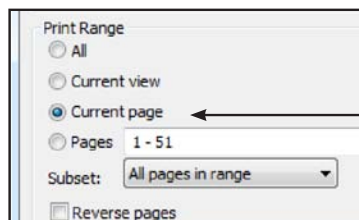
ATTENTION

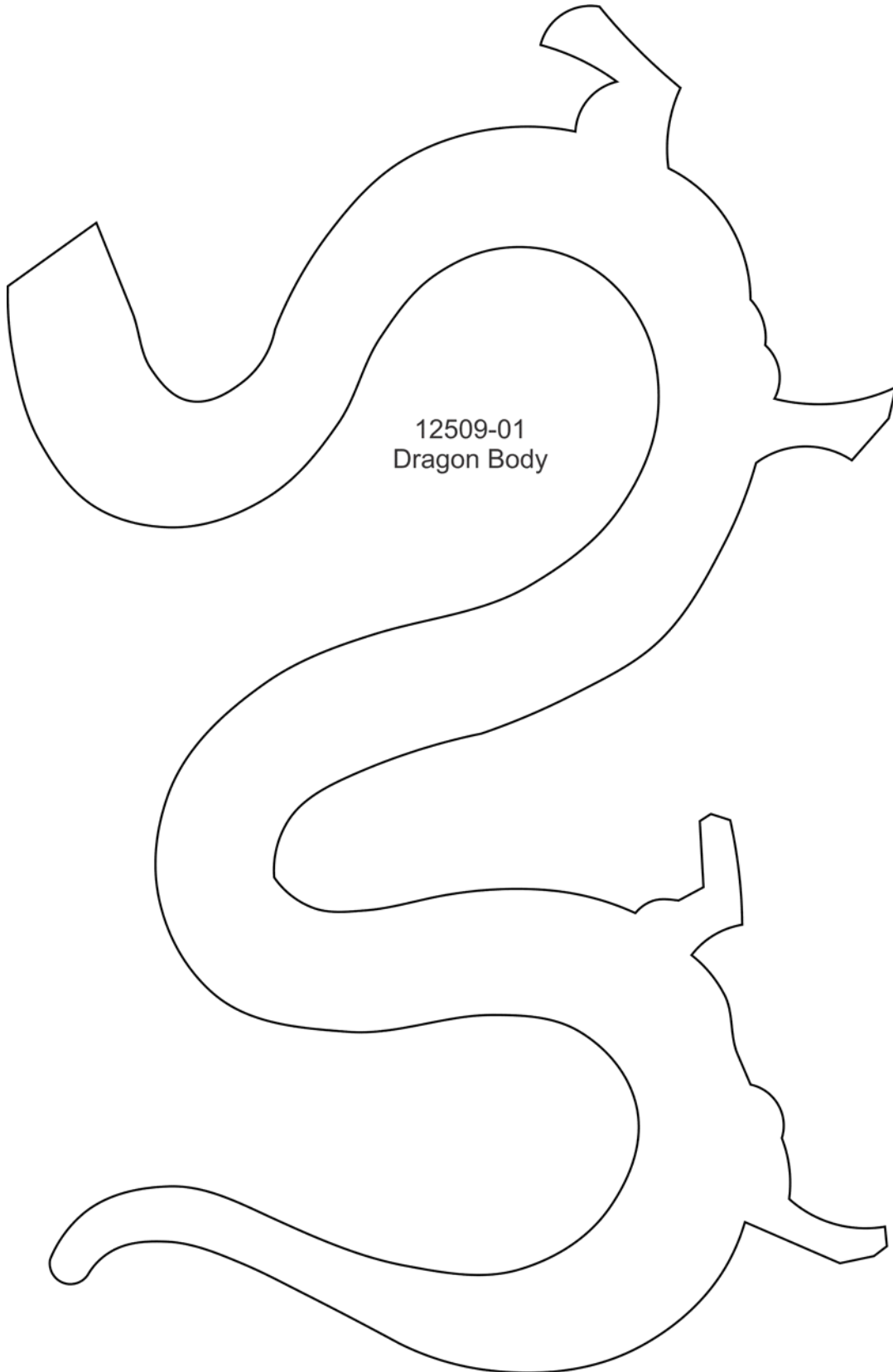
When printing this document, any page scaling or page fitting options in your print dialog box must be turned OFF or set to NONE so that your files will print out at their actual size. Images not printed at actual size will not function as intended.

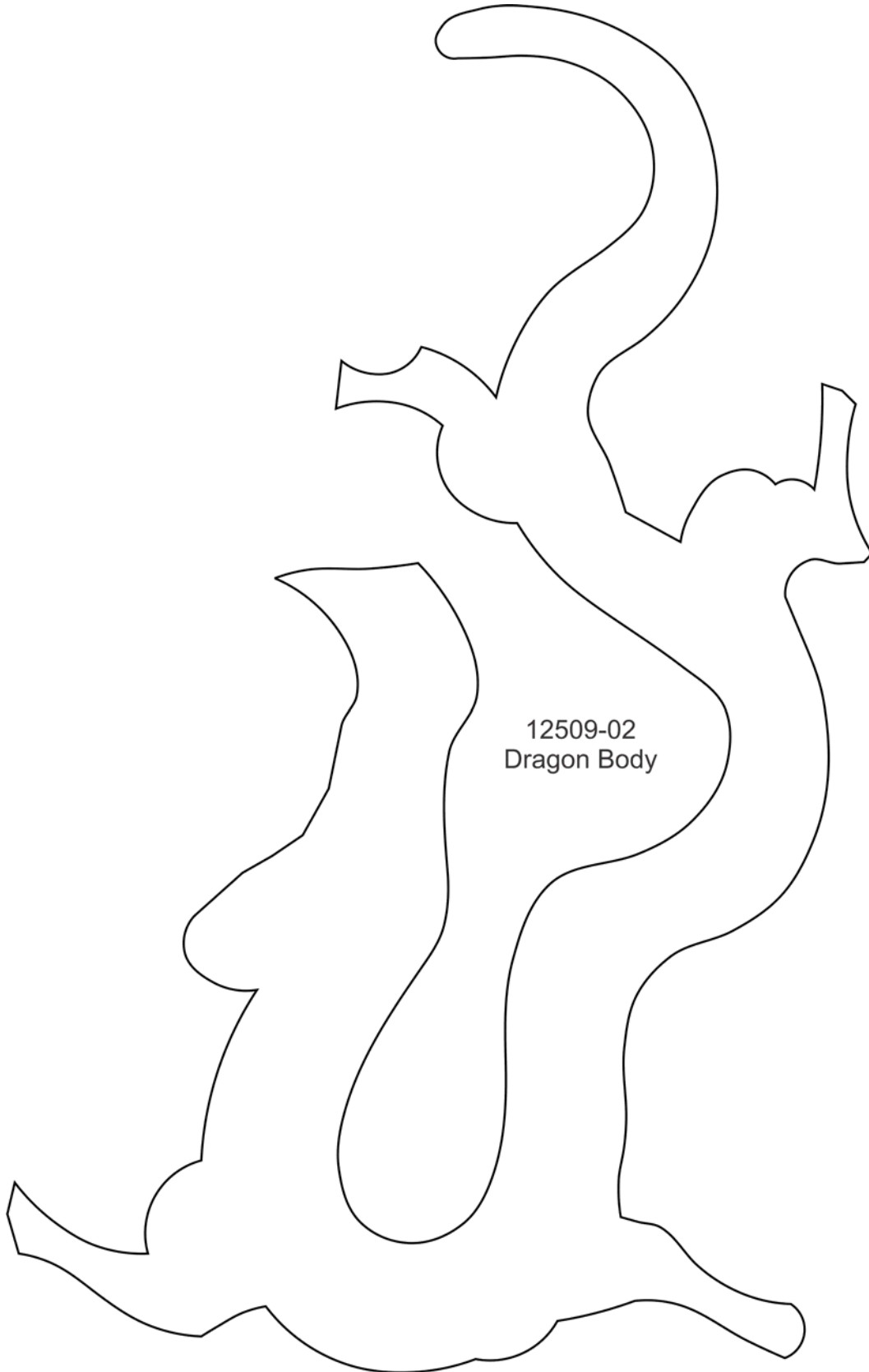


TO SAVE PAPER

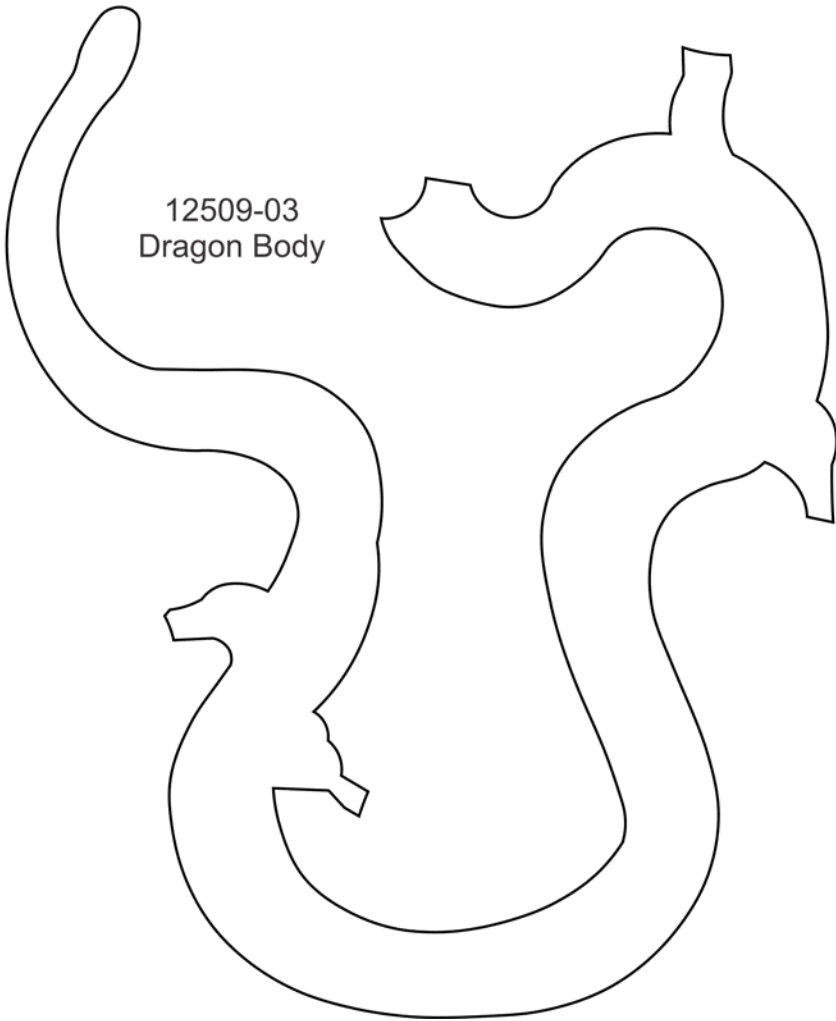
Only print the desired image by navigating to the image's page, go to File > Print and select "Current page" in the print dialog box. Repeat for each desired image.







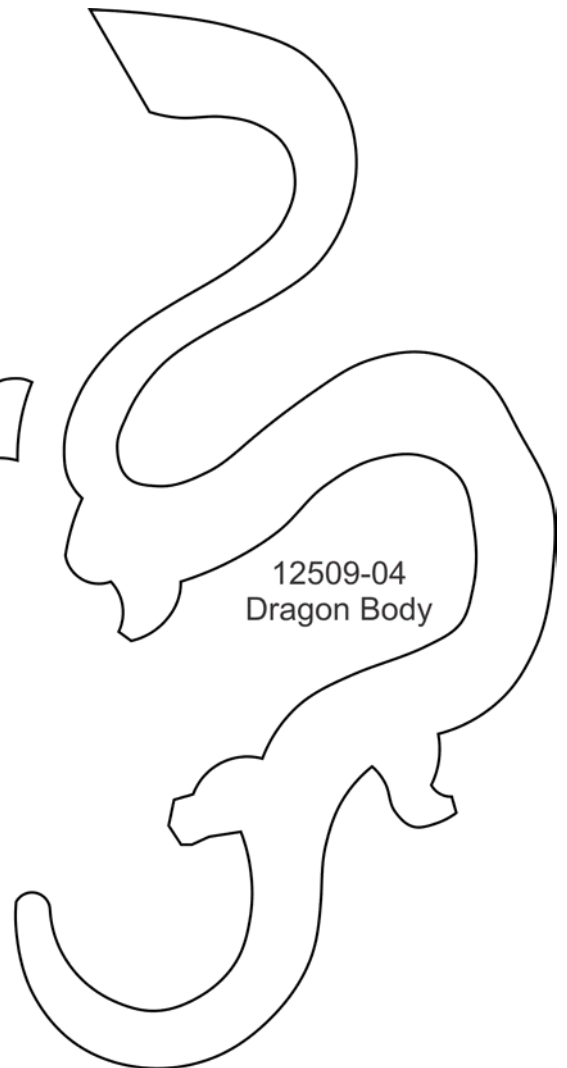
12509-02
Dragon Body



12509-03
Dragon Body



12509-04
Arm



12509-04
Dragon Body

OESD Dragon Treasures #12509 embroidery collection is a small group of designs with appliqué and stitch impact. One of the large appliquéd dragons is showcased on a simple black drawstring backpack. Metallic thread is used on some of the dragons as their scales. Additional stitch emphasis allows these dragons to come alive.

Supplies:

- OESD Embroidery Collection Dragon Treasures #12509
- Heavy weight tear away stabilizer
- OESD Appliqué Fuse & Stick
- ⅓ yd. 60" fabric
- Fabric for appliqué
- (4) 1 ½" squares fusible interfacing
- Embroidery threads
- Temporary spray adhesive
- Double sided fabric tape
- Fabric marking pen
- ⅜" gold grommets
- 4 ⅓ yds. ⅜" cording (drawstrings)

Cut:

- (2) 16" x 22" pieces fabric (front & back)
- (1) 4" x 16" piece fabric (bottom)
- (2) 4" x 22" pieces fabric (sides)
- (2) 18" x 24" pieces heavy weight tear away
- (2) 78" pieces cording (drawstrings)



Embroider:

- Design used on the drawstring backpack is #12509-02 in the jumbo hoop. Print template for appliqué. Prepare fabric for appliqué by fusing OESD Appliqué Fuse & Stick to wrong side of appliqué fabric. Cut out.
- Using 16" x 22" piece fabric, mark center for design. Place double sided fabric tape on the wrong side of the inner jumbo hoop. Using temporary spray adhesive, spray each 18" x 24" piece of stabilizer and adhere to each other and to the wrong side of the marked fabric. Using template in inner jumbo hoop, position onto center mark on fabric, and hoop. Place hoop on embroidery machine and find center point. Embroider design using prepared fabric for appliqué. **Photo 1.**
- Remove hoop. Remove stabilizer. Press. (Front) **Photo 2.**



Assembly: (½" seam allowance)

- Right sides together, pin bottom to front. Start stitching ½" from end and stop stitching ½" from the other end. Right sides together, pin bottom to back. Start stitching ½" from end and stop stitching ½" from the other end. Press seams open. **Photo 3.**

- Right sides together, pin each side to front. Stitch each side, starting at the top and stopping 1/2" from the end. Right sides together, pin each side to back and bottom. **Photo 4.** Stitch each side, starting at the top and stopping 1/2" from the end. For the bottom, start stitching 1/2" from end and stop stitching 1/2" from the other end. Press seams open. **Photo 5.**
- With top of bag still inside out and seams pressed open, stitch 2 1/4" on the edge of the seam allowance on each side. This is done so that when putting in the cord the loose seam allowance doesn't interfere. **Photo 6.**
- Fold and press upper top edge 1/4" to wrong side. Fold and press upper top edge 1" to wrong side.
- Use 2 squares of interfacing, fuse to each wrong side of the center side just below the folded edge. This is where the upper top center side grommets will be. **Photo 7.**
- Using the remaining 2 squares of interfacing, fuse to each wrong side of the bottom back corner. This is where the bottom back corner grommets will be.
- Following manufacturer's directions, add grommets to each upper top center side. On the bottom back corner, fold along the side and include so there are two pieces of fabric to put the grommets through, leaving the bottom out. Following manufacturer's directions add grommets to each bottom back corner. **Photo 8.**
- Pin and stitch along the folded edge to create a casing for the drawstrings. Insert one drawstring through grommet and casing, making sure the ends are even. Pull both cords through bottom back corner grommet and tie a knot. Repeat with remaining drawstring, starting from opposite side. Pull both cords through other bottom back corner grommet and tie a knot. The drawstring will draw the upper edge and the sides will be used for placing on your back. Enjoy! **Photo 9.**



Photo 4



Photo 5

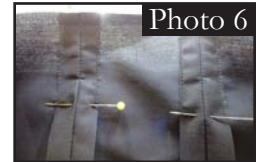


Photo 6



Photo 7



Photo 8



Photo 9