

Note: Some designs in this collection may have been created using unique special stitches and/or techniques. To preserve design integrity when rescaling or rotating designs in your software, always rescale or rotate designs using the handles directly on-screen.



12536-01 Blank Wrap FSA
4.45 X 8.90 in.
113.03 X 226.06 mm
4,909 St. **L**



12536-02 "Anything Is Possible With Tea" Wrap FSA
4.45 X 8.90 in.
113.03 X 226.06 mm
6,636 St. **L**



12536-03 "Coffee" Wrap FSA
4.45 X 8.90 in.
113.03 X 226.06 mm
9,443 St. **L**



12536-04 "Property Of" Wrap 1 FSA
4.45 X 8.90 in.
113.03 X 226.06 mm
10,032 St. **L**



12536-05 "Tea" Wrap FSA
4.45 X 8.90 in.
113.03 X 226.06 mm
8,249 St. **L**



12536-06 "Don't Ask Stupid Questions 'Til I Finish My Coffee" Wrap FSA
4.45 X 8.90 in.
113.03 X 226.06 mm
6,379 St. **L**



12536-07 "Property Of" Wrap 2 FSA
4.45 X 8.90 in.
113.03 X 226.06 mm
7,982 St. **L**

⌘ Design contains a loose fill.

⚙ Some solid areas shown are not stitched.

L Design is larger than 5" (127 mm) in either direction.

S Design is smaller than 1.5" (38.1 mm) in either direction.

It is a violation of Copyright law to make and distribute copies of electronic designs or artwork.

Electronic designs are licensed to the original purchaser for use at one location. ©2014 OESD, LLC. All rights reserved.



In The Hoop Cup Wraps

#12536 / 7 Designs

Listings below indicate color sample, stitching order and suggested thread color number. "I" refers to Isacord thread and "T" refers to Timeless thread. Colors beginning with 20501 refer to YLI Fine Metallics, 7 refer to Yenmet Metallic, 8 refer to YLI Variations Variegated Thread and 9 refer to Isacord Multicolor Variegated.

	I	T		I	T		I	T
12536-01 Blank Wrap FSA			12536-04 "Property Of" Wrap 1 FSA			12536-06 "Don't Ask Stupid Questions 'Til I Finish My Coffee" Wrap FSA		
■ 1. Back Layer Placement Stitch	1900	12115	■ 1. Back Layer Placement Stitch	0352	18106	■ 1. Back Layer Placement Stitch	0842	26103
■ 2. Back Layer Cut Line, Tackdown & Loop Placement Stitch	1900	12115	■ 2. Back Layer Cut Line, Tackdown & Loop Placement Stitch	0352	18106	■ 2. Back Layer Cut Line, Tackdown & Loop Placement Stitch	0842	26103
■ 3. Loop Tackdown	1900	12115	■ 3. Loop Tackdown	0352	18106	■ 3. Loop Tackdown	0842	26103
■ 4. Insulation & Top Layer Basting Stitch.....	1900	12115	■ 4. Insulation & Top Layer Basting Stitch.....	0352	18106	■ 4. Insulation & Top Layer Basting Stitch.....	0842	26103
■ 5. Top Layer Cut Line & Tackdown.....	1900	12115	■ 5. Top Layer Cut Line & Tackdown.....	0352	18106	■ 5. Top Layer Cut Line & Tackdown.....	0842	26103
■ 6. Button Placement Stitch.....	1900	12115	■ 6. Letters	4174	28148	■ 6. Letters	0842	26103
■ 7. Match Bobbin & Cover Stitch	1900	12115	■ 7. Swirls.....	0352	18106	■ 7. Button Placement Stitch.....	0842	26103
			■ 8. Button Placement Stitch.....	0352	18106	■ 8. Match Bobbin & Cover Stitch	0842	26103
			■ 9. Match Bobbin & Cover Stitch	0352	18106			
12536-02 "Anything Is Possible With Tea" ...Wrap FSA			12536-05 "Tea" Wrap FSA			12536-07 "Property Of" Wrap 2 FSA		
■ 1. Back Layer Placement Stitch	0352	18106	■ 1. Back Layer Placement Stitch	4644	18220	■ 1. Back Layer Placement Stitch	0842	26103
■ 2. Back Layer Cut Line, Tackdown & Loop Placement Stitch	0352	18106	■ 2. Back Layer Cut Line, Tackdown & Loop Placement Stitch	4644	18220	■ 2. Back Layer Cut Line, Tackdown & Loop Placement Stitch	0842	26103
■ 3. Loop Tackdown	0352	18106	■ 3. Loop Tackdown	4644	18220	■ 3. Loop Tackdown	0842	26103
■ 4. Insulation & Top Layer Basting Stitch.....	0352	18106	■ 4. Insulation & Top Layer Basting Stitch.....	4644	18220	■ 4. Insulation & Top Layer Basting Stitch.....	0842	26103
■ 5. Top Layer Cut Line & Tackdown.....	0352	18106	■ 5. Top Layer Cut Line & Tackdown.....	4644	18220	■ 5. Top Layer Cut Line & Tackdown.....	0842	26103
■ 6. Letters	0352	18106	■ 6. Letters	0015	28154	■ 6. Tan Letters & Banner	0842	26103
■ 7. Button Placement Stitch.....	0352	18106	■ 7. Light Green Swirls.....	5050	14175	■ 7. Dark Gray Letters.....	4174	28148
■ 8. Match Bobbin & Cover Stitch	0352	18106	■ 8. Dark Green Swirls.....	4644	18220	■ 8. Button Placement Stitch.....	0842	26103
			■ 9. Button Placement Stitch.....	4644	18220	■ 9. Match Bobbin & Cover Stitch	0842	26103
			■ 10. Match Bobbin & Cover Stitch	4644	18220			
12536-03 "Coffee" Wrap FSA								
■ 1. Back Layer Placement Stitch	0842	26103						
■ 2. Back Layer Cut Line, Tackdown & Loop Placement Stitch	0842	26103						
■ 3. Loop Tackdown	0842	26103						
■ 4. Insulation & Top Layer Basting Stitch.....	0842	26103						
■ 5. Top Layer Cut Line & Tackdown.....	0842	26103						
■ 6. Letters	0842	26103						
■ 7. Light Brown Swirls.....	1123	20130						
■ 8. Dark Brown Swirls.....	1154	26121						
■ 9. Button Placement Stitch.....	0842	26103						
■ 10. Match Bobbin & Cover Stitch	0842	26103						

These simple-to-stitch wraps make great gifts for everyone! Made in the hoop, this project is easy to personalize with different appliqué fabrics. A blank wrap is included, perfect for adding a monogram, school name or Greek letters.

Supplies

- OESD embroidery collection In the Hoop Cup Wraps #12536
- Heavy weight wash away stabilizer
- ¼ yd. OR 9" x 10" fabric
- 9" x 4" piece Insul-Bright
- 4" piece ⅛" elastic
- 1 button
- Embroidery threads
- Temporary spray adhesive

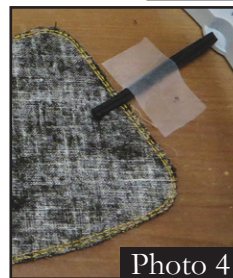
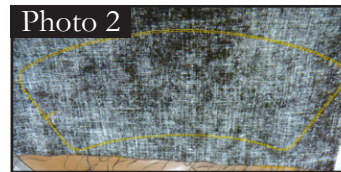
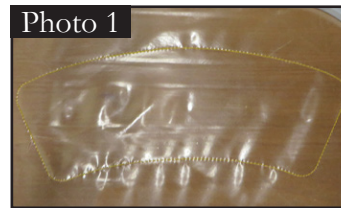


Cut

- (1) Insul-Bright using pattern
- (2) 4 ½" x 10" pieces fabric (back and top fabrics)

Instructions

- Hoop two layers heavy weight wash away stabilizer.
- Stitch first stitch of embroidery design which is the Back Layer Placement Stitch. **Photo 1**
- Center and place back fabric wrong side up. Stitch the second stitch of embroidery design called Back Layer Cut Line, Tackdown & Loop Placement Stitch. **Photo 2**
- Trim fabric along cut line. **Photo 3**
- Fold elastic piece in half, and place over Loop Placement Stitch, with folded side out and cut ends inside. Tape in place. **Photo 4**
- Stitch the Loop Tackdown, making sure the elastic doesn't move. Remove tape.
- Using temporary spray adhesive, spray both sides of the Insul-Bright. Center and place Insul-Bright over back. **Photo 5**
- Center and place fabric top, right side up, over Insul-Bright. Stitch the Insulation & Top Layer Basting Stitch. **Photo 6**
- Stitch the Top Layer Cut Line & Tackdown. **Photo 7**
- Trim fabric along cut line, being careful not to cut the elastic. **Photo 8**
- Stitch the next colors for the design on the cup wrap according to the thread chart. **NOTE:** You may want to change the bobbin thread now to match the last color.



- The next color change is the Button Placement Stitch.

Photo 9

- The last color is the Match Bobbin and Cover Stitch. If you haven't already changed out your bobbin thread now is the time. **Photo 10**

- Stitch on the button over the Button Placement Stitch.

Photo 11

- Place the cup wrap around your cup and button in place. Enjoy the different ones!

NOTE: If you need the wrap to fit a slightly smaller cup, use shorter elastic and/or stitch the button further in than the Button Placement Stitch. If you need to fit a slightly larger cup, use a longer elastic. You can use the Insul-Bright Pattern to get an idea how the wrap fits around the cup you want to use it with.



Photo 9



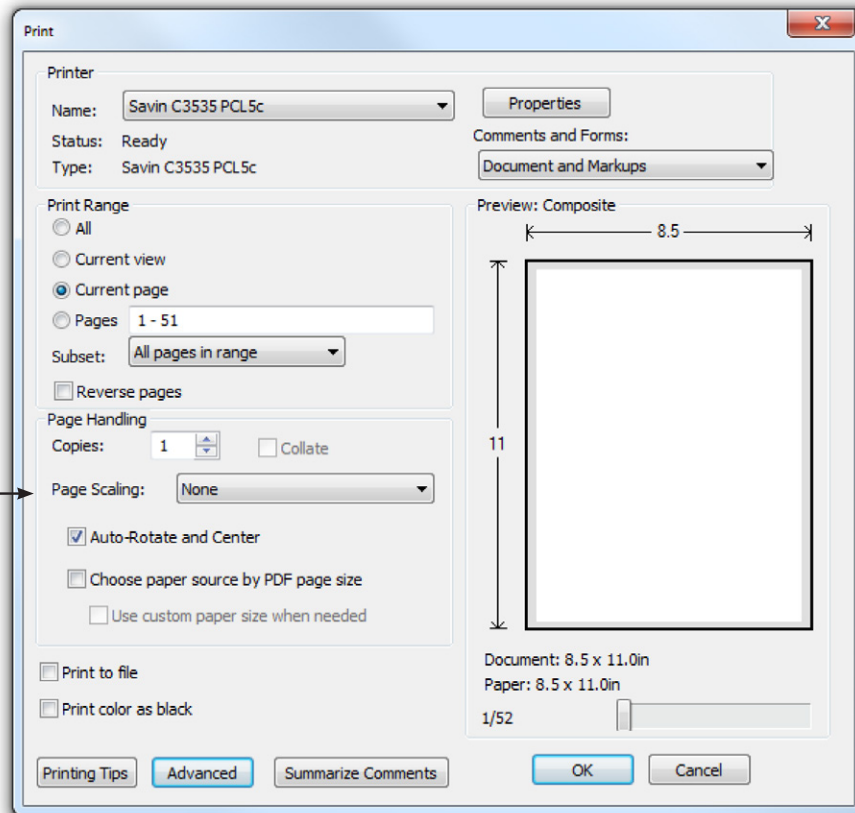
Photo 10



Photo 11

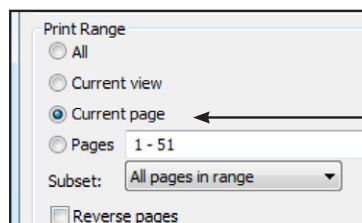
ATTENTION

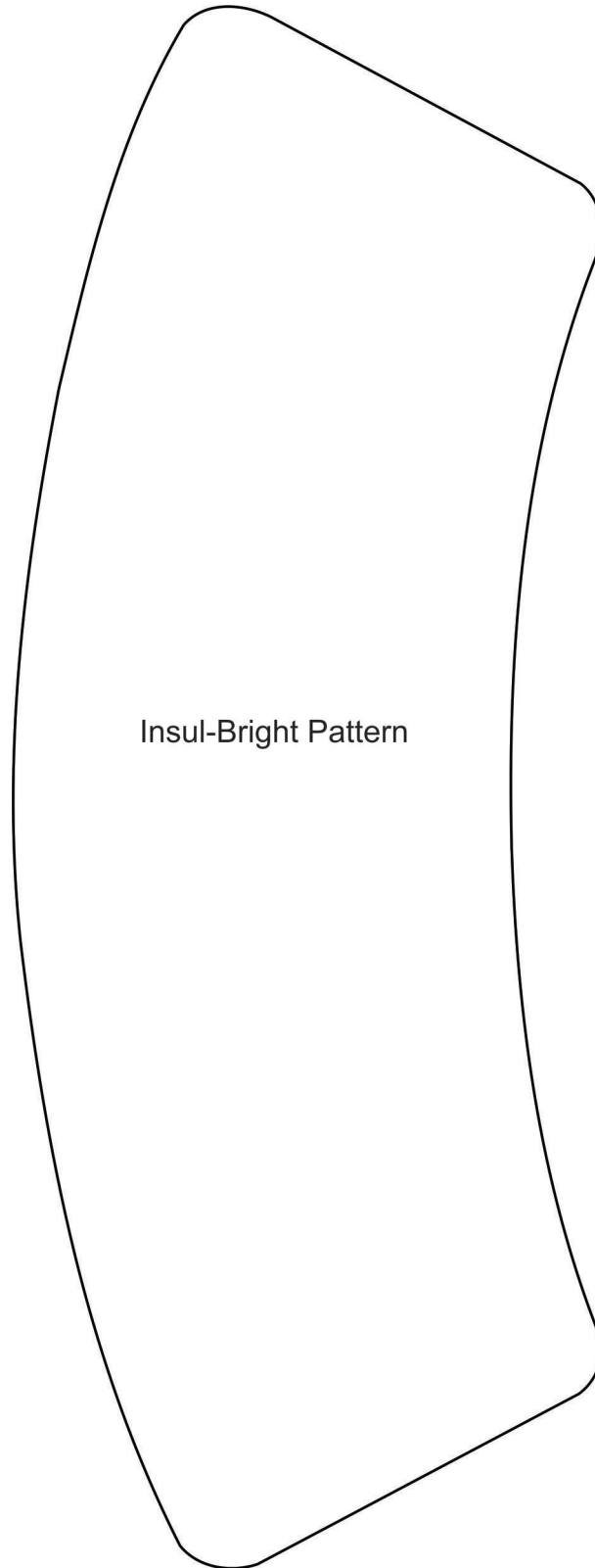
When printing this document, any page scaling or page fitting options in your print dialog box must be turned OFF or set to NONE so that your files will print out at their actual size. Images not printed at actual size will not function as intended.



TO SAVE PAPER

Only print the desired image by navigating to the image's page, go to File > Print and select "Current page" in the print dialog box. Repeat for each desired image.





Insul-Bright Pattern