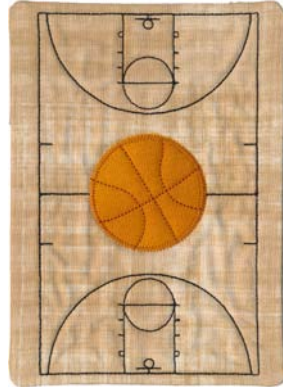


Note: Some designs in this collection may have been created using unique special stitches and/or techniques. To preserve design integrity when rescaling or rotating designs in your software, always rescale or rotate designs using the handles directly on-screen.



12566-01 Baseball Mug Rug
Appliqué
 5.37 X 6.89 in.
 136.40 X 175.01 mm
 12,713 St. ⚡ ⚙ L



12566-02 Basketball Mug Rug
Appliqué
 5.37 X 6.88 in.
 136.40 X 174.75 mm
 6,673 St. ⚡ ⚙ L



12566-03 Football Mug Rug
Appliqué
 5.37 X 6.88 in.
 136.40 X 174.75 mm
 10,393 St. ⚡ ⚙ L



12566-04 Soccer Mug Rug
Appliqué
 5.37 X 6.90 in.
 136.40 X 175.26 mm
 11,057 St. ⚡ ⚙ L



12566-05 Hockey Mug Rug
Appliqué
 5.37 X 6.88 in.
 136.40 X 174.75 mm
 8,940 St. ⚡ L



12566-06 Golf Mug Rug
 5.37 X 6.88 in.
 136.40 X 174.75 mm
 20,252 St. ⚡ ⚙ L

⚡ Design contains a loose fill.

⚙ Some solid areas shown are not stitched.

L Design is larger than 5" (127 mm) in either direction.

S Design is smaller than 1.5" (38.1 mm) in either direction.



In the Hoop Sports Mug Rugs

#12566 / 6 Designs

Listings below indicate color sample, stitching order and suggested thread color number. Most numbers indicate Isacord thread. Colors beginning with 20501 refer to YLI Fine Metallics, 7 refer to Yenmet Metallic, 8 refer to YLI Variations Variegated Thread and 9 refer to Isacord Multicolor Variegated.

12566-01 Baseball Mug Rug Appliqué

	1. Batting Placement Stitch.....	0015
	2. Background Tackdown.....	0015
	3. Field Placement Stitch.....	5510
	4. Field Tackdown.....	5510
	5. Dirt.....	0934
	6. Dirt Outlines.....	1055
	7. Bases.....	0015
	8. Ball Placement Stitch.....	0015
	9. Ball Tackdown.....	0015
	10. Baseball Red Stitching.....	1904
	11. Seam Stitch.....	0020

12566-03 Football Mug Rug Appliqué

	1. Batting Placement Stitch.....	5633
	2. Background Tackdown.....	5633
	3. End Zones Placement Stitch.....	0870
	4. Top End Zone Tackdown.....	0870
	5. Bottom End Zone Tackdown.....	0020
	6. White Numbering & Yard Lines.....	0015
	7. Football Placement Stitch.....	5633
	8. Football Tackdown.....	1055
	9. Laces.....	0015
	10. Seam Stitch.....	0020

12566-05 Hockey Mug Rug Appliqué

	1. Batting Placement Stitch.....	0015
	2. Background Tackdown.....	0015
	3. Puck Placement Stitch.....	0020
	4. Puck Tackdown.....	0020
	5. Skin.....	1161
	6. Blue Uniform Detail.....	3620
	7. Stick.....	1055
	8. Black Uniform Detail & Outlines.....	0020
	9. Gray Detail.....	0131
	10. Seam Stitch.....	0020

12566-02 Basketball Mug Rug Appliqué

	1. Batting Placement Stitch.....	0532
	2. Background Tackdown.....	0532
	3. Court Linework.....	0020
	4. Basketball Placement Stitch.....	1115
	5. Basketball Tackdown.....	1115
	6. Seam Stitch.....	0020

12566-04 Soccer Mug Rug Appliqué

	1. Batting Placement Stitch.....	5400
	2. Background Tackdown.....	5400
	3. Goal & Lines.....	0015
	4. Ball Placement Stitch.....	0015
	5. Ball Tackdown.....	0015
	6. Black Ball Detail.....	0020
	7. Seam Stitch.....	0020

12566-06 Golf Mug Rug

	1. Batting Placement Stitch.....	0015
	2. Background Tackdown.....	0015
	3. Blue Box.....	4111
	4. Red Box.....	1904
	5. Black Detail.....	0020
	6. Green Shield.....	7002
	7. Gold Clubs.....	7013
	8. Dark Green Course Legend Detail.....	5510
	9. Light Green Course Legend Detail.....	6051
	10. Seam Stitch.....	0020

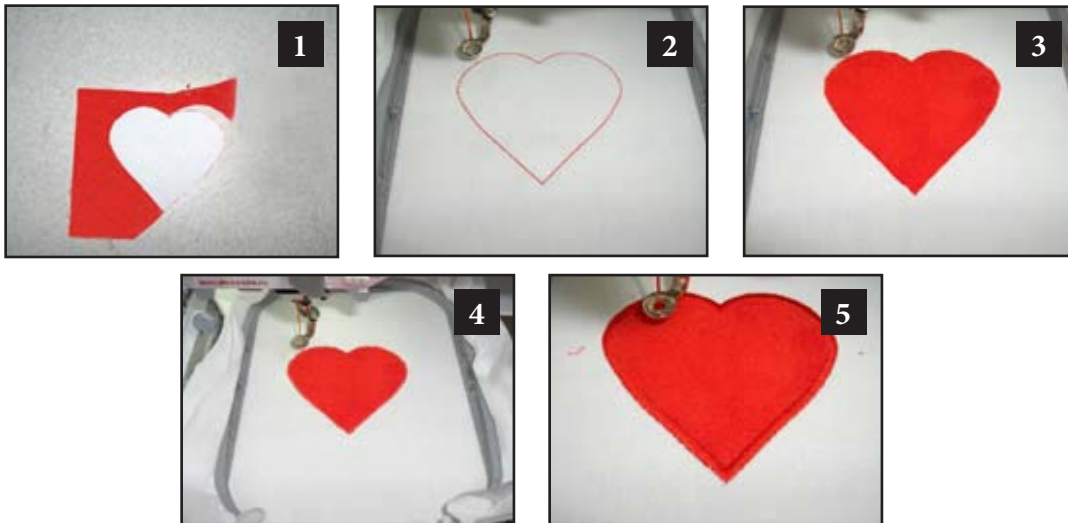
Isacord / Yenment Metallic Thread Colors Used in “In the Hoop Sports Mug Rugs” Collection #12566

0015 White	1055 Bark	5400 Scrub Green
0020 Black	1115 Copper	5510 Emerald
0131 Smoke	1161 Straw	5633 Lime
0532 Champagne	1904 Cardinal	6051 Jalapeno
0870 Muslin	3620 Marine Blue	7002 Green Metallic
0934 Fawn	4111 Turquoise	7013 Gold Metallic

1. Print out the necessary pages from the PDF of the appliqué pattern(s).
2. Mark the right side of the pattern pieces so you'll know which direction to lay the pattern on the fabric.
3. Lightly spray the wrong side of the pattern pieces with temporary adhesive spray and allow it to set for a few minutes.
4. Place the pattern pieces on the right side of the fabric and carefully cut them out. **PHOTO 1**
5. Sew the placement stitch on your hooped fabric. **PHOTO 2**
6. With the paper still stuck to the right side of the appliqué fabric, spray the wrong side of the fabric with temporary spray adhesive.
7. Place the fabric inside the sewing placement stitch so that it matches the stitching line, and then remove the paper pattern. **PHOTO 3**
8. Sew the tackdown. **PHOTO 4**
9. Sew the remainder of the design and repeat for any remaining pieces. **PHOTO 5**

NOTE: The patterns are sized for the designs as they were made. If you resize the design, you will need to resize the pattern the same amount. You can print out the pattern at the normal size then copy it on a copy machine at the changed size. For example, resize the designs to 80%, resize the printed pattern to 80%.

TIP: When Printing the patterns, make sure that the "Fit to page" option is UNCHECKED in the Print Dialog Box. If this option is checked the printed patterns will not be actual size.





In the Hoop Sports Mug Rugs

Instructions

A collection of In the Hoop Sports Mug Rugs #12566 features your favorite sport. Choose from an Appliquéd baseball field, basketball court, football field, soccer ball & goal, hockey player & puck or even a golf score card. It will be difficult to decide. Make a set of all of them using fabrics you have on hand.

Supplies

- OESD embroidery collection In the Hoop Sports Mug Rugs #12566
- Medium weight tear away stabilizer
- OESD Appliqué Fuse and Fix
- Embroidery thread
- Temporary spray adhesive
- Embroidery machine
- Fabrics for each mug rug:

o 12566-01 Baseball Mug Rug Appliqué -

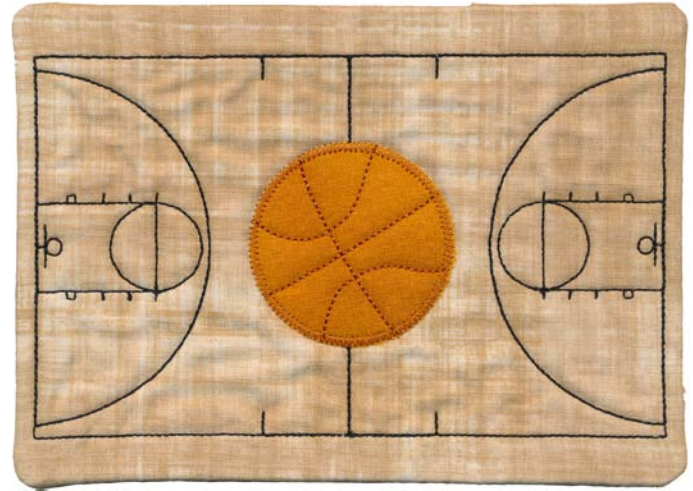
- 5 1/2" x 8" background fabric
- 4 1/2" x 4 1/2" piece green appliqué fabric (field)
- 3 1/2" x 3 1/2" piece white appliqué fabric (ball)
- 5 1/2" x 18" backing fabric
- 5 1/2" x 8" cotton batting

o 12566-02 Basketball Mug Rug Appliqué -

- 5 1/2" x 8" background fabric
- 2 1/2" x 2 1/2" piece basketball appliqué fabric
- 5 1/2" x 18" backing fabric
- 5 1/2" x 8" cotton batting

o 12566-03 Football Mug Rug Appliqué -

- 5 1/2" x 8" background fabric
- 1" x 5" piece top end zone appliqué fabric
- 1" x 5" piece bottom end zone appliqué fabric
- 2" x 2" piece brown appliqué fabric (football)
- 5 1/2" x 18" backing fabric
- 5 1/2" x 8" cotton batting



o 12566-04 Soccer Mug Rug Appliqué -

- 5 1/2" x 8" background fabric
- 2" x 2" piece white appliqué fabric (ball)
- 5 1/2" x 18" backing fabric
- 5 1/2" x 8" cotton batting

o 12566-05 Hockey Mug Rug Appliqué -

- 5 1/2" x 8" background fabric
- 2 1/2" x 2 1/2" piece black appliqué fabric (puck)
- 5 1/2" x 18" backing fabric
- 5 1/2" x 8" cotton batting

o 12566-06 Golf Mug Rug -

- 5 1/2" x 8" background fabric
- 5 1/2" x 18" backing fabric
- 5 1/2" x 8" cotton batting

Cut

- For appliqué mug rugs – following manufacturer's directions, use OESD Fuse and Fix on the wrong side of the appliqué fabrics. Cut out appliqués using the appliqué template provided.
- For the back pieces of the mug rugs – cut a 5 1/2" x 11" piece and 5 1/2" x 5 1/2" piece from backing fabric. Wrong sides together, fold each in half and press.

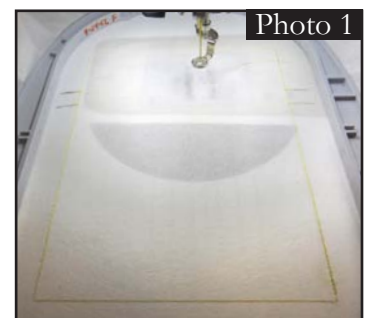
NOTE: To hold the pieces together better and to create a more stable backing, press a piece of OESD Fuse and Fix between the wrong sides, and then peel off the paper backing and stick together.

Mug Rugs Instructions

- Hoop one layer medium weight tear away stabilizer
- Stitch first color called Batting Placement Stitch.

NOTE: Use a pencil to extend the two sets of parallel lines to make them more clear later. **PHOTO 1**

- Layer background fabric right side up with cotton batting. Center and place layered



fabric and batting over the Batting Placement Stitch.

PHOTO 2

- Stitch the next color called Background Tackdown.

PHOTO 3

- Follow the basic *Pre-Cut Appliqué Instructions* when stitching Placement Stitch(s) during the embroidery process if applicable.

- Stitch the design. **PHOTO 4**

- Before the last color change called Seam Stitch, find the two sets of parallel lines that were stitched during the Batting Placement Stitch, and use them as a guide to place your two folded back pieces so that they are overlapping. Place the smaller backing piece on first lining up folded edge with the lower placement line and raw edges even. **PHOTO 5**

- Then place the larger backing piece overlapping with the smaller piece and lining up folded edge with the upper placement line and raw edges even. **PHOTO 6**

- Stitch the last color change called Seam Stitch.

- Trim 1/4" around the seam, and clip corners.

PHOTO 7

- Turn your mug rug right side out and enjoy!



Photo 2



Photo 3



Photo 4



Photo 5

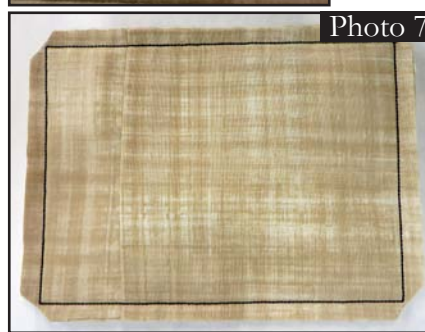


Photo 7

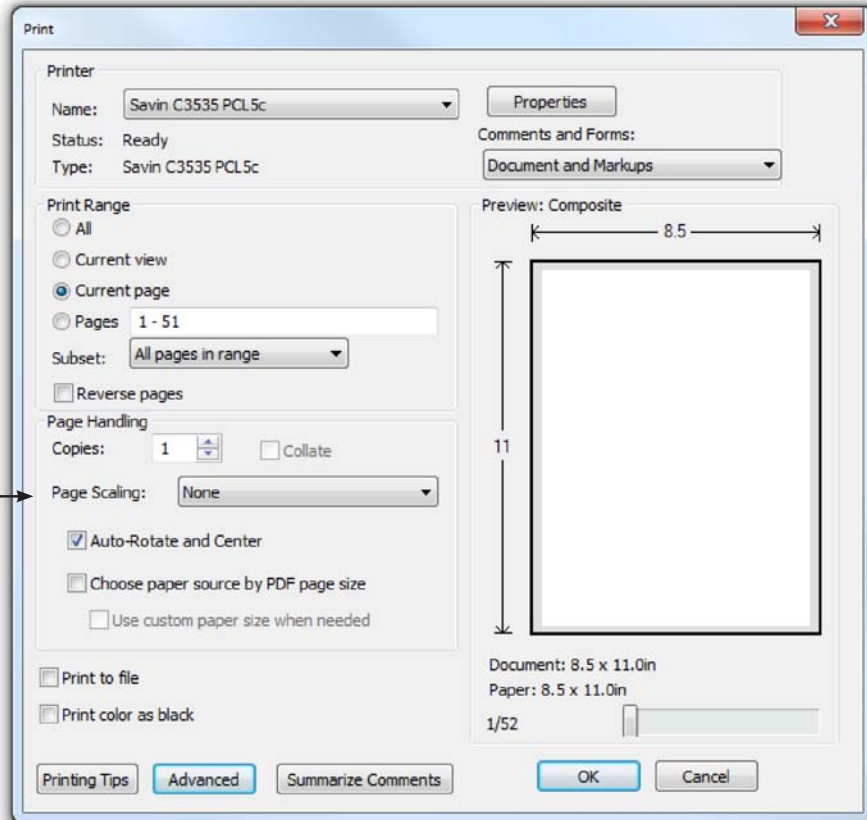


Photo 6



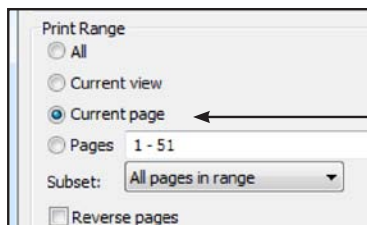
ATTENTION


When printing this document, any page scaling or page fitting options in your print dialog box must be turned OFF or set to NONE so that your files will print out at their actual size. Images not printed at actual size will not function as intended.



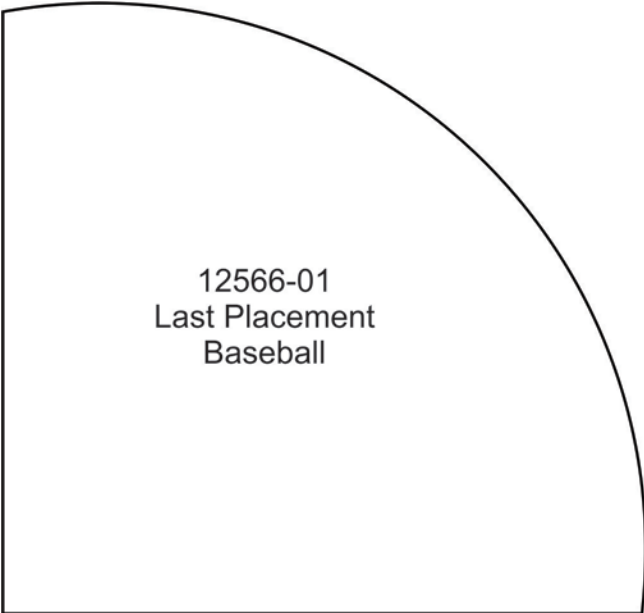
TO SAVE PAPER

Only print the desired image by navigating to the image's page, go to File > Print and select "Current page" in the print dialog box. Repeat for each desired image.





12566-01
1st Placement
Baseball Field



12566-01
Last Placement
Baseball

