

Note: Some designs in this collection may have been created using unique special stitches and/or techniques. To preserve design integrity when rescaling or rotating designs in your software, always rescale or rotate designs using the handles directly on-screen.



12582-01 Sewing Room
4.98 X 8.98 in.
126.49 X 228.09 mm
22,318 St. ❄️ L



12582-02 Powder Room
4.98 X 8.98 in.
126.49 X 228.09 mm
18,224 St. ❄️ L



12582-03 Laundry Room
4.98 X 8.98 in.
126.49 X 228.09 mm
29,598 St. ❄️ L



12582-04 Bathroom
4.98 X 8.98 in.
126.49 X 228.09 mm
21,171 St. ❄️ L



12582-05 Coats in Here
4.98 X 8.98 in.
126.49 X 228.09 mm
25,208 St. ❄️ L



12582-06 Shhhh...the Baby is Sleeping
4.98 X 8.98 in.
126.49 X 228.09 mm
16,789 St. ❄️ L



12582-07 Do Not Disturb
4.98 X 8.98 in.
228.09 X 126.49 mm
20,177 St. ❄️ L



12582-08 Pardon the Mess
4.98 X 8.98 in.
126.49 X 228.09 mm
16,649 St. ❄️ L



12582-09 Welcome
4.98 X 8.98 in.
126.49 X 228.09 mm
23,688 St. ❄️ L



12582-10 Beware the Cat...is locked in this room
4.98 X 8.98 in.
126.49 X 228.09 mm
22,218 St. ❄️ L



12582-11 Beware the Dog...is locked in this room
4.98 X 8.98 in.
126.49 X 228.09 mm
22,016 St. ❄️ L



12582-12 Just Married!
4.98 X 8.98 in.
126.49 X 228.09 mm
19,074 St. ❄️ L

❄️ Design contains a loose fill.

❄️ Some solid areas shown are not stitched.

L Design is larger than 5" (127 mm) in either direction.

S Design is smaller than 1.5" (38.1 mm) in either direction.

It is a violation of Copyright law to make and distribute copies of electronic designs or artwork.

Electronic designs are licensed to the original purchaser for use at one location. ©2015 OESD, LLC. All rights reserved.



In the Hoop Classic Door Hangers

#12582 / 12 Designs

Listings below indicate color sample, stitching order and suggested thread color number. Most numbers indicate Isacord thread. Colors beginning with 20501 refer to YLI Fine Metallics, 7 refer to Yenmet Metallic, 8 refer to YLI Variations Variegated Thread and 9 refer to Isacord Multicolor Variegated.

12582-01 Sewing Room

■ 1. Placement Stitch	0112
■ 2. Cut Line & Tackdown	0112
■ 3. Sewing Machine & Letters	4174
■ 4. Sewing Machine Detail.....	4073
■ 5. Back Cut Line & Tackdown	0112
■ 6. Cover Stitch.....	0112

12582-02 Powder Room

■ 1. Placement Stitch	0112
■ 2. Cut Line & Tackdown	0112
■ 3. Faucet & Pedestal.....	4073
■ 4. Sink, Pedestal & Letters.....	4174
■ 5. Back Cut Line & Tackdown	0112
■ 6. Cover Stitch.....	0112

12582-03 Laundry Room

■ 1. Placement Stitch	0112
■ 2. Cut Line & Tackdown	0112
■ 3. Control Panels.....	4073
■ 4. Washer & Dryer Details.....	4174
■ 5. Windows.....	4073
■ 6. Back Cut Line & Tackdown	0112
■ 7. Cover Stitch.....	0112

12582-04 Bathroom

■ 1. Placement Stitch	0112
■ 2. Cut Line & Tackdown	0112
■ 3. Tub & Letters.....	4174
■ 4. Towel & Pipes.....	4073
■ 5. Back Cut Line & Tackdown	0112
■ 6. Cover Stitch.....	0112

12582-05 Coats in Here

■ 1. Placement Stitch	0112
■ 2. Cut Line & Tackdown	0112
■ 3. Coat & Letters	4174
■ 4. Coat Detail	4073
■ 5. Back Cut Line & Tackdown	0112
■ 6. Cover Stitch.....	0112

12582-06 Shhhh...the Baby is Sleeping

■ 1. Placement Stitch	0112
■ 2. Cut Line & Tackdown	0112
■ 3. Letters	4174
■ 4. Bottom Swirls	4073
■ 5. Back Cut Line & Tackdown	0112
■ 6. Cover Stitch.....	0112

12582-07 Do Not Disturb

■ 1. Placement Stitch	0112
■ 2. Cut Line & Tackdown	0112
■ 3. Letters	4174
■ 4. Swirls.....	4073
■ 5. Back Cut Line & Tackdown	0112
■ 6. Cover Stitch.....	0112

12582-08 Pardon the Mess

■ 1. Placement Stitch	0112
■ 2. Cut Line & Tackdown	0112
■ 3. Letters	4174
■ 4. Swirls.....	4073
■ 5. Back Cut Line & Tackdown	0112
■ 6. Cover Stitch.....	0112

12582-09 Welcome

■ 1. Placement Stitch	0112
■ 2. Cut Line & Tackdown	0112
■ 3. Letters	4174
■ 4. Swirls.....	4073
■ 5. Back Cut Line & Tackdown	0112
■ 6. Cover Stitch.....	0112

12582-10 Beware the Cat...is locked in this room

■ 1. Placement Stitch	0112
■ 2. Cut Line & Tackdown	0112
■ 3. Beware the Cat & Cat	4174
■ 4. is locked in this room.....	4174
■ 5. Back Cut Line & Tackdown	0112
■ 6. Cover Stitch.....	0112

12582-11 Beware the Dog...is locked in this room

■ 1. Placement Stitch	0112
■ 2. Cut Line & Tackdown	0112
■ 3. Beware the Dog & Paws	4174
■ 4. is locked in this room.....	4174
■ 5. Back Cut Line & Tackdown	0112
■ 6. Cover Stitch.....	0112

12582-12 Just Married!

■ 1. Placement Stitch	0112
■ 2. Cut Line & Tackdown	0112
■ 3. Left Bell & Right Ringer.....	4073
■ 4. Letters, Right Bell & Detail	4174
■ 5. Bells Detail	4073
■ 6. Back Cut Line & Tackdown	0112
■ 7. Cover Stitch.....	0112

**Isacord Thread Colors Used in “In the Hoop Classic Door Hangers”
Collection #12582**

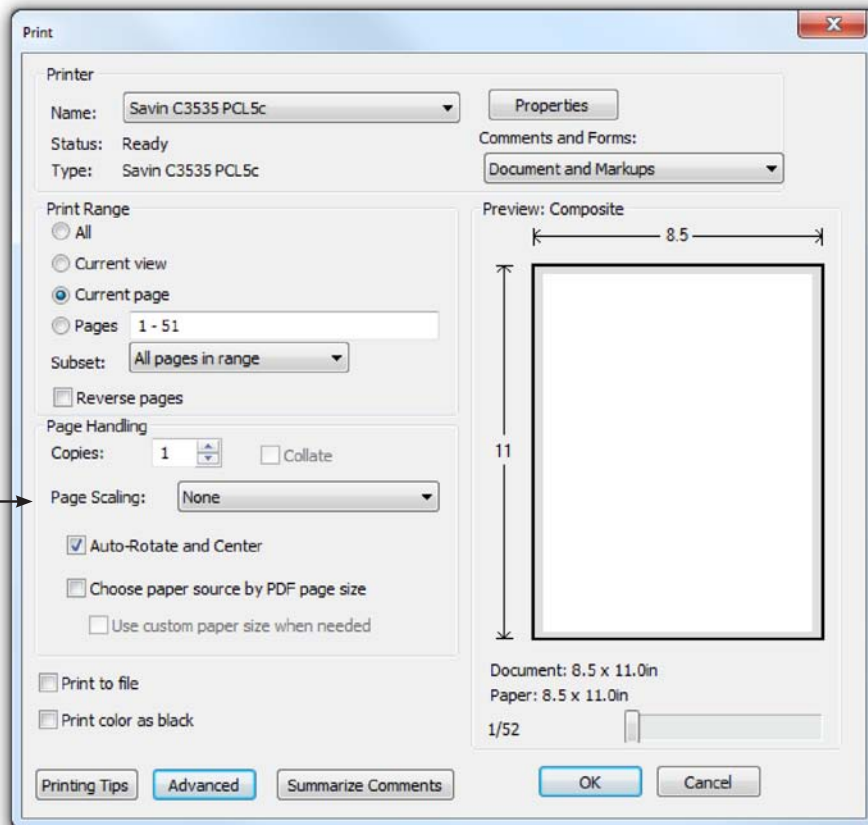
0112 Leadville

4073 Metal

4174 Charcoal

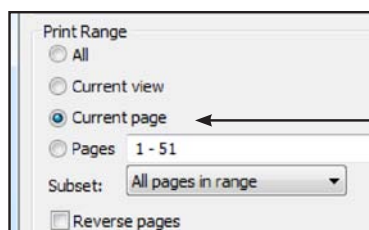
ATTENTION

When printing this document, any page scaling or page fitting options in your print dialog box must be turned OFF or set to NONE so that your files will print out at their actual size. Images not printed at actual size will not function as intended.



TO SAVE PAPER

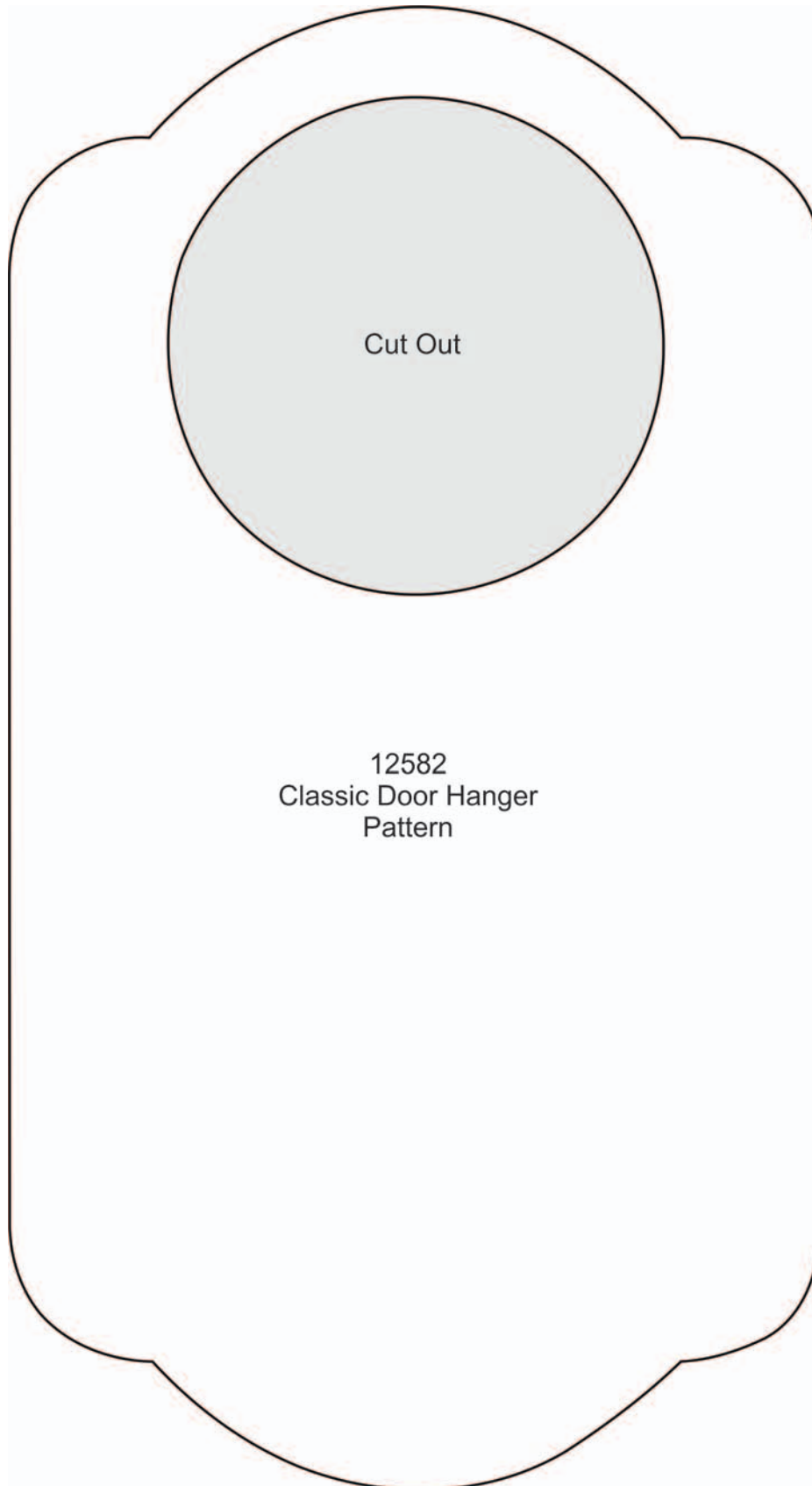
Only print the desired image by navigating to the image's page, go to File > Print and select "Current page" in the print dialog box. Repeat for each desired image.





In the Hoop Classic Door Hangers

Classic Door Hanger Pattern



12582
Classic Door Hanger
Pattern



In the Hoop Classic Door Hangers

Instructions

This collection includes easy-to-make door hangers for every room in your house. Whether you need signs for house party guests or just want to decorate your interior doors, there is something here for you.

Supplies

- OESD embroidery collection In the Hoop Classic Door Hangers #12582
- Heavy weight wash away stabilizer
- 6" x 10" piece cotton or linen fabric (door hanger front)
- 6" x 10" piece cotton fabric (door hanger back)
- OESD FiberForm Craft Interfacing Sheet
- Temporary spray adhesive
- Isacord embroidery threads
- Black Bobbin Thread
- Embroidery machine



Cut

NOTE: Print door hanger pattern. For each door hanger, cut FiberForm using door hanger pattern.

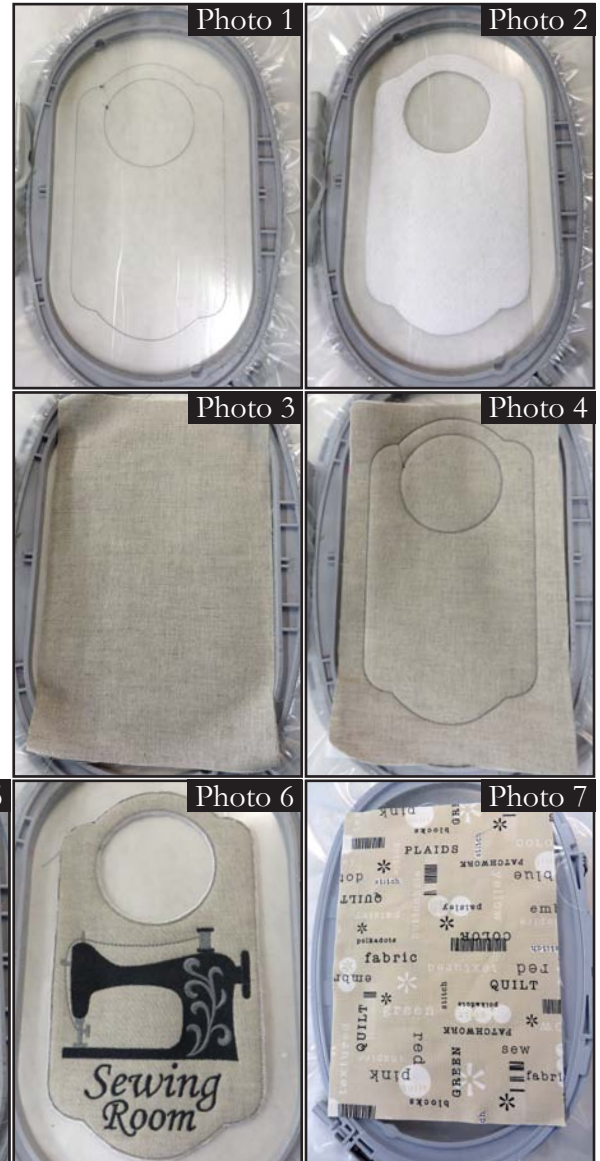
Embroider

NOTE: For best results use black bobbin thread.

- Hoop 2 layers of heavy weight wash away stabilizer. **PHOTO 1**
- Stitch first stitch of embroidery design which is the Placement Stitch. **PHOTO 1**
- Using temporary spray adhesive, lightly spray the Placement Stitch. Center and place pre-cut FiberForm door hanger shape over the Placement Stitch. **PHOTO 2**
- Lightly spray the shape. Center and place door hanger front fabric right side up over the shape. **PHOTO 3**
- Stitch the second stitch of embroidery design called Cut Line and Tackdown. **PHOTO 4**
- Take the hoop off the embroidery machine. Trim fabric along the outer and inner circle cut line. **PHOTO 5**
- Put the hoop back on the embroidery machine. Stitch the next colors for the design on the door hanger according to the thread chart. **PHOTO 6**
- Take the hoop off the embroidery machine. Trim any jump threads. Lightly spray on the back of the hoop. Center and place door hanger back fabric right side out over the back of the hoop.

NOTE: You may want to change the bobbin thread now to match the last color.

PHOTO 7



OESD™ In the Hoop Classic Door Hangers

Instructions

- Put the hoop back on the embroidery machine. Stitch the next color called Back Cut Line and Tackdown.
- Take the hoop off the embroidery machine. Trim fabric along the outer and inner circle cut line. **PHOTO 8**
- The last color is the Cover Stitch. If you haven't already changed out your bobbin thread now is the time. **PHOTO 9**
- Remove the door hanger from the hoop. Remove the excess wash away stabilizer. **PHOTOS 10 & 11**

