



Note: Some designs in this collection may have been created using unique special stitches and/or techniques. To preserve design integrity when rescaling or rotating designs in your software, always rescale or rotate designs using the handles directly on-screen.



12592-01 Tile 1
4.84 X 6.83 in.
122.94 X 173.48 mm
5,015 St. L



12592-02 Tile 2
5.12 X 6.84 in.
130.05 X 173.74 mm
12,387 St. L



12592-03 Tile 3
5.05 X 6.65 in.
128.27 X 168.91 mm
2,500 St. L



12592-04 Tile 4
5.02 X 6.78 in.
127.51 X 172.21 mm
5,566 St. L



12592-05 Tile 5
4.80 X 6.70 in.
121.92 X 170.18 mm
15,950 St. L



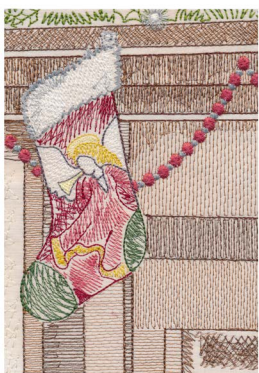
12592-06 Tile 6
4.82 X 6.76 in.
122.43 X 171.70 mm
18,335 St. L



12592-07 Tile 7
4.77 X 6.68 in.
121.16 X 169.67 mm
32,236 St. L



12592-08 Tile 8
4.70 X 6.71 in.
119.38 X 170.43 mm
14,718 St. L



12592-09 Tile 9
4.87 X 6.79 in.
123.70 X 172.47 mm
18,131 St. L



12592-10 Tile 10
4.87 X 6.65 in.
123.70 X 168.91 mm
18,374 St. L



12592-11 Tile 11
4.64 X 6.67 in.
117.86 X 169.42 mm
32,680 St. L



12592-12 Tile 12
4.75 X 6.68 in.
120.65 X 169.67 mm
32,004 St. L

Design contains a loose fill.

Some solid areas shown are not stitched.

L Design is larger than 5" (127 mm) in either direction.

S Design is smaller than 1.5" (38.1 mm) in either direction.

Note: Some designs in this collection may have been created using unique special stitches and/or techniques. To preserve design integrity when rescaling or rotating designs in your software, always rescale or rotate designs using the handles directly on-screen.



12592-13 Tile 13
4.77 X 6.80 in.
121.15 X 172.72 mm
28,179 St. **⌘ L**



12592-14 Tile 14
4.90 X 6.91 in.
124.46 X 175.51 mm
10,424 St. **⌘ L**



12592-15 Tile 15
4.87 X 6.70 in.
123.70 X 170.18 mm
6,636 St. **⌘ L**



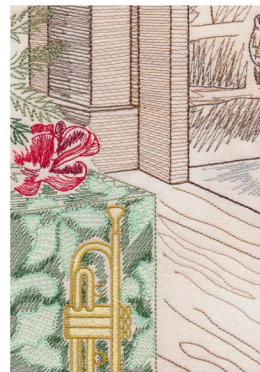
12592-16 Tile 16
4.73 X 6.68 in.
120.14 X 169.67 mm
24,159 St. **⌘ L**



12592-17 Tile 17
4.76 X 6.67 in.
120.90 X 169.42 mm
28,932 St. **⌘ L**



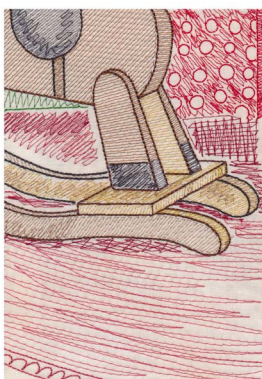
12592-18 Tile 18
4.81 X 6.67 in.
122.17 X 169.42 mm
26,569 St. **⌘ L**



12592-19 Tile 19
4.70 X 6.77 in.
119.38 X 171.96 mm
18,384 St. **⌘ L**



12592-20 Tile 20
4.73 X 6.78 in.
120.14 X 172.21 mm
8,571 St. **⌘ L**



12592-21 Tile 21
4.94 X 6.70 in.
125.48 X 170.18 mm
12,666 St. **⌘ L**



12592-22 Tile 22
4.81 X 6.71 in.
122.17 X 170.43 mm
15,688 St. **⌘ L**



12592-23 Tile 23
4.71 X 6.69 in.
119.63 X 169.93 mm
14,265 St. **⌘ L**



12592-24 Tile 24
4.70 X 6.71 in.
119.38 X 170.43 mm
9,812 St. **⌘ L**

⌘ Design contains a loose fill.

⊛ Some solid areas shown are not stitched.

L Design is larger than 5" (127 mm) in either direction.

S Design is smaller than 1.5" (38.1 mm) in either direction.

Note: Some designs in this collection may have been created using unique special stitches and/or techniques. To preserve design integrity when rescaling or rotating designs in your software, always rescale or rotate designs using the handles directly on-screen.



12592-25 Tile 25

4.72 X 6.68 in.
119.89 X 169.67 mm
3,099 St. ⌘ L



12592-26 Top & Bottom Borders

4.54 X 3.00 in.
115.32 X 76.20 mm
13,191 St. ⌘



12592-27 Side Borders

3.00 X 6.55 in.
76.20 X 166.37 mm
19,648 St. ⌘ L



12592-28 Corner 1

3.11 X 3.01 in.
78.99 X 76.45 mm
6,725 St. ⌘



12592-29 Corner 2

3.11 X 3.01 in.
78.99 X 76.45 mm
6,725 St. ⌘

⌘ Design contains a loose fill.

⌘ Some solid areas shown are not stitched.

L Design is larger than 5" (127 mm) in either direction.

S Design is smaller than 1.5" (38.1 mm) in either direction.

It is a violation of Copyright law to make and distribute copies of electronic designs or artwork.

Electronic designs are licensed to the original purchaser for use at one location. ©2015 OESD, LLC. All rights reserved.

Listings below indicate color sample, stitching order and suggested thread color number. Most numbers indicate Isacord thread. Colors beginning with 20501 refer to YLI Fine Metallics, 7 refer to Yenmet Metallic, 8 refer to YLI Variations Variegated Thread and 9 refer to Isacord Multicolor Variegated.

12592-01 Tile 1

1. Background.....	0870
2. Dark Green Tree Detail.....	5944
3. Medium Green Tree Detail.....	5643
4. Light Green Tree Detail.....	0453
5. Seam.....	0761

12592-02 Tile 2

1. Background.....	0870
2. Dark Green Tree Leaves.....	5944
3. Medium Green Tree Leaves.....	5643
4. Light Green Tree Leaves.....	0453
5. Ornament.....	0520
6. Ornament Hook.....	0138
7. Star.....	0622
8. Star Detail.....	0822
9. Seam.....	0761

12592-03 Tile 3

1. Background.....	0870
2. Garland.....	5833
3. Seam.....	0761

12592-04 Tile 4

1. Background.....	0870
2. Wreath Leaf.....	5633
3. Garland & Wreath Detail.....	5833
4. Garland Lights.....	7005
5. Candle Glass.....	0131
6. Candles & Lights.....	0015
7. Flames.....	1332
8. Seam.....	0761

12592-05 Tile 5

1. Background.....	0870
2. Dark Green Leaves.....	5555
3. Lime Green Leaves.....	5633
4. Leaf Shading & Outlines.....	5833
5. Garland Light.....	7005
6. Berries.....	1921
7. Light Center.....	0015
8. Seam.....	0761

12592-06 Tile 6

1. Background.....	0870
2. Dark Green Tree Leaves.....	5944
3. Medium Green Tree Leaves.....	5643
4. Light Green Tree Leaves.....	0453
5. Tree Lights.....	7005
6. Yellow Ornament Detail.....	0520
7. Tan Ornament Detail.....	0822
8. Red Ornament Detail.....	1903
9. Dark Red Ornament Detail.....	1912
10. Ornament Hook.....	0138
11. Light Centers.....	0015
12. Seam.....	0761

12592-07 Tile 7

1. Dark Green Tree Leaves.....	5944
2. Medium Green Tree Leaves.....	5643
3. Light Green Tree Leaves.....	0453
4. Light Yellow Detail.....	0520
5. Light Red Ornament Detail.....	1903
6. Dark Red Ornament Detail.....	1912
7. Tan Ornament Detail.....	0822
8. Silver Detail.....	7005
9. White Detail.....	0015
10. Light Gray Ornament Hook.....	0131
11. Dark Gray Ornament Hook.....	0138
12. Light Red Center Detail.....	1903
13. Seam.....	0761

12592-08 Tile 8

1. Background.....	0870
2. Dark Green Tree Leaves.....	5944
3. Medium Green Tree Leaves.....	5643
4. Light Green Tree Leaves.....	0453
5. Garland.....	5833
6. Brown Mantle Detail.....	1154
7. Dark Brown Mantle Detail.....	0945
8. Dark Brown Mantle Outline.....	1346
9. Light Gray Detail.....	0131
10. Light Red Detail.....	1921
11. Dark Red Ornament Detail.....	1912
12. Light Red Ornament Detail.....	1903
13. Light Yellow Ornament Detail.....	0520
14. Ornament Hook.....	0138
15. Light.....	7005
16. Light White Center.....	0015
17. Seam.....	0761

12592-09 Tile 9

1. Background.....	0870
2. Garland.....	5833
3. Brown Fireplace Detail.....	1154
4. Dark Brown Fireplace Detail.....	0945
5. Garland Light.....	7005
6. White Detail.....	0015
7. Light Brown Detail.....	0853
8. Dark Brown Fireplace Outline.....	1346
9. Light Gray Detail.....	0131
10. Light Red Detail.....	1921
11. Dark Red Detail.....	1912
12. Gold Detail.....	0622
13. Light Yellow Detail.....	0520
14. Green Detail.....	5643
15. Stocking Outlines.....	0138
16. Seam.....	0761

12592-10 Tile 10

1. Garland.....	5833
2. Brown Fireplace Detail.....	1154
3. Dark Brown Fireplace Detail.....	0945
4. Dark Green Stocking Detail.....	5944
5. Yellow Detail.....	0520
6. Medium Green Detail.....	5643
7. Light Brown Detail.....	0853
8. Dark Brown Detail.....	1346
9. Gold Bird Detail.....	0622
10. White Stocking Cuff.....	0015
11. Light Gray Detail.....	0131
12. Light Red Bead Detail.....	1921
13. Heel & Toe Detail.....	1912
14. Seam.....	0761

12592-11 Tile 11

1. Dark Green Tree Leaves.....	5944
2. Medium Green Tree Leaves.....	5643
3. Light Green Tree Leaves.....	0453
4. Silver Lights.....	7005
5. Light White Center.....	0015
6. Yellow Ornament Detail.....	0520
7. Green Ornament Detail.....	5643
8. Light Red Ornament Detail.....	1903
9. Dark Red Ornament Detail.....	1912
10. Light Gray Ornament Hook.....	0131
11. Tan Ornament Detail.....	0822
12. Dark Gray Ornament Hook.....	0138
13. Seam.....	0761

12592-12 Tile 12

1. Dark Green Tree Leaves.....	5944
2. Medium Green Tree Leaves.....	5643
3. Light Green Tree Leaves.....	0453
4. Yellow Ornament Detail.....	0520
5. Light Red Ornament Detail.....	1903
6. Dark Red Ornament Detail.....	1912
7. Tan Ornament Detail.....	0822
8. Dark Gray Ornament Hooks.....	0138
9. Silver Lights.....	7005
10. Lights White Center.....	0015
11. Green Ornament Detail.....	5643
12. Seam.....	0761

12592-13 Tile 13

1. Background.....	0870
2. Dark Green Tree Leaves.....	5944
3. Medium Green Tree Leaves.....	5643
4. Light Green Tree Leaves.....	0453
5. Yellow Ornament Detail.....	0520
6. Dark Red Ornament Detail.....	1912
7. Light Red Ornament Detail.....	1903
8. Tan Ornament Detail.....	0822
9. Dark Red Ornament Detail.....	1912
10. Light Yellow Ornament Center.....	0520
11. Light Gray Ornament Hook.....	0131
12. Silver Lights.....	7005
13. Lights White Center.....	0015
14. Seam.....	0761

12592-14 Tile 14

1. Background.....	0870
2. Light Green Tree Leaves.....	0453
3. Medium Brown Fireplace Detail.....	1154
4. Dark Brown Fireplace Detail.....	0945
5. Light Brown Fireplace Detail.....	0853
6. Seam.....	0761

12592-15 Tile 15

1. Medium Brown Brick Detail.....	1154
2. Light Brown Brick Detail.....	0853
3. Dark Brown Brick & Wood Detail.....	0945
4. Orange Flames.....	1332
5. Gold Flames.....	0622
6. Seam.....	0761

12592-16 Tile 16

1. Dark Green Tree Detail.....	5944
2. Medium Green Tree Detail.....	5643
3. Light Green Tree Detail.....	0453
4. Light Green Present Detail.....	5633
5. Horse Detail.....	1154
6. Mane, Saddle & Face.....	0138
7. Horse, Saddle Outlines & Detail.....	1776
8. Horse Outlines.....	1346
9. Light Red Tree Skirt.....	1921
10. Red Details.....	1903
11. Dark Red Detail.....	1912
12. Silver Light.....	7005
13. Light White Center.....	0015
14. Seam.....	0761

Listings below indicate color sample, stitching order and suggested thread color number. Most numbers indicate Isacord thread. Colors beginning with 20501 refer to YLI Fine Metallics, 7 refer to Yenmet Metallic, 8 refer to YLI Variations Variegated Thread and 9 refer to Isacord Multicolor Variegated.

12592-17 Tile 17

1. Dark Green Tree Detail	5944
2. Medium Green Tree Detail	5643
3. Light Green Tree Detail	0453
4. Light Green Present Detail	5633
5. Tree Trunk	1154
6. Light Red Tree Skirt	1921
7. Ribbon, Present & Ornament Detail	1903
8. Yellow Ornament Detail	0520
9. Tan Ornament Detail	0822
10. Dark Red Detail	1912
11. Light Gray Ornament Hooks	0131
12. Silver Light	7005
13. Light White Detail	0015
14. Seam	0761

12592-18 Tile 18

1. Dark Green Tree Detail	5944
2. Medium Green Tree Detail	5643
3. Light Green Tree Detail	0453
4. Light Red Tree Skirt	1921
5. Green Gift Detail	5643
6. Sea Green Gift Detail	5450
7. Lime Green Gift, Ribbon & Ornament Detail	5633
8. Dark Green Gift & Ornament Detail	5555
9. Red Gift & Ornament Detail	1903
10. Yellow Ornament Detail	0520
11. Dark Red Gift & Ornament Detail	1912
12. Tan Ornament Detail	0822
13. Light Gray Ornament Hook	0131
14. Silver Light	7005
15. Light White Center	0015
16. Seam	0761

12592-19 Tile 19

1. Medium Brown Fireplace Detail	1154
2. Light Brown Fireplace & Floor Detail	0853
3. Dark Brown Fireplace Detail	0945
4. Dark Brown Linework	1346
5. Light Green Detail	0453
6. Medium Green Tree & Gift Detail	5643
7. Sea Green Gift Detail	5450
8. Yellow Trumpet Detail	0520
9. Tan Trumpet Outline	0822
10. Dark Red Bow	1912
11. Light Red Bow	1903
12. Light Gray Fireplace Floor	0131
13. Seam	0761

12592-20 Tile 20

1. Light Gray Fireplace	0131
2. Light Brown Wood Floor	0853
3. Dark Brown Fireplace Floor Detail	1346
4. Medium Brown Logs	1154
5. Dark Brown Logs	0945
6. Log Fire Detail	1332
7. Gold Flames	0622
8. Dark Gray Fireplace Iron	0138
9. Dark Brown Fireplace Iron	1776
10. Seam	0761

12592-21 Tile 21

1. Light Red Detail	1921
2. Red Gift	1903
3. Dark Red Shading	1912
4. Horse	1154
5. Lime Green Gift	5633
6. Rocking Horse Legs	0822
7. Rocking Horse Legs Shading	0853
8. Rocking Horse Outlines	1346
9. Dark Gray Detail	0138
10. Design Outlines	1776
11. Seam	0761

12592-22 Tile 22

1. Light Red Detail	1921
2. Red Gift Detail	1903
3. Dark Red Shading & Gift Detail	1912
4. Brown Tree Trunk	1154
5. Dark Green Gift Detail	5944
6. Bear	0853
7. Bow Tie	5633
8. Light Green Bow Outlines	0453
9. Present Detail	5833
10. Dark Brown Bear Shading & Outlines	1346
11. Bear Yellow Detail	0520
12. Eyes & Nose	0138
13. Seam	0761

12592-23 Tile 23

1. Light Red Detail	1921
2. Red Detail	1903
3. Dark Red Shading & Detail	1912
4. Dark Green Gift Detail	5944
5. Yellow Ribbon	0520
6. Ribbon Outline	0822
7. Lime Green Gift Detail	5633
8. Medium Green Gift Detail	5833
9. Dark Green Gift Outlines	5555
10. White Drum Detail	0015
11. Dark Gray Drum Detail	0138
12. Dark Green Background Gift	5643
13. Floor Detail	0853
14. Seam	0761

12592-24 Tile 24

1. Medium Green Gift	5643
2. Sea Green Gift Detail	5450
3. Yellow Trumpet Detail	0520
4. Tan Trumpet Outline	0822
5. Light Green Gift Detail	5833
6. Lime Green Gift Detail	5633
7. Red Bow	1903
8. Dark Red Bow	1912
9. Dark Green Gift Outline	5555
10. Light Green Gift Outline	0453
11. Floor Detail	0853
12. Seam	0761

12592-25 Tile 25

1. Floor Detail	0853
2. Seam	0761

12592-26 Top & Bottom Borders

1. Yellow Detail	0520
2. Red Detail & Motif	1903
3. Yellow Detail	0520
4. Seam	1903

12592-27 Side Borders

1. Yellow Detail	0520
2. Red Detail & Motif	1903
3. Yellow Detail	0520
4. Seam	1903

12592-28 Corner 1

1. Yellow Detail	0520
2. Red Detail & Motif	1903
3. Yellow Detail	0520
4. Seam	1903

12592-29 Corner 2

1. Yellow Detail	0520
2. Red Detail & Motif	1903
3. Yellow Detail	0520
4. Seam	1903

Isacord / Yenmet Metallic Thread Colors Used in "Night Before Christmas" Collection #12592

0015 White	0870 Muslin	1921 Blossom
0131 Smoke	0945 Pine Bark	5450 Basic Seafoam
0138 Heavy Storm	1154 Penny	5555 Deep Green
0453 Army Drab	1332 Harvest	5633 Lime
0520 Daffodil	1346 Cinnamon	5643 Green Dust
0622 Star Gold	1776 Blackberry	5833 Lima Bean
0761 Oat	1903 Lipstick	5944 Backyard Green
0822 Palomino	1912 Winterberry	7005 Silver Metallic
0853 Pecan		

Listings below indicate color sample, stitching order and suggested thread color number. Most numbers indicate Isacord thread. Colors beginning with 20501 refer to YLI Fine Metallics, 7 refer to Yenmet Metallic, 8 refer to YLI Variations Variegated Thread and 9 refer to Isacord Multicolor Variegated.

NOTE: Match seam stitch color to background fabric.

Original Thread Colors	Chalkboard Thread Colors
---------------------------	-----------------------------

0015 White	0015 White
0131 Smoke.....	0015 White
0138 Heavy Storm	0131 Smoke
0453 Army Drab	0015 White
0520 Daffodil.....	0131 Smoke
0622 Star Gold.....	0015 White
0761 Oat	0138 Heavy Storm
0822 Palomino	0015 White
0853 Pecan	0131 Smoke
0870 Muslin.....	0138 Heavy Storm
0945 Pine Bark	0131 Smoke
1154 Penny	0131 Smoke
1332 Harvest.....	0131 Smoke
1346 Cinnamon	0015 White
1776 Blackberry.....	0015 White
1903 Lipstick.....	0131 Smoke
1912 Winterberry	0015 White
1921 Blossom	0131 Smoke
5450 Basic Seafoam	0131 Smoke
5555 Deep Green.....	0015 White
5633 Lime.....	0131 Smoke
5643 Green Dust.....	0131 Smoke
5833 Lima Bean.....	0015 White
5944 Backyard Green	0112 Leadville
7005 Silver Metallic.....	7005 Silver Metallic





Night Before Christmas

Chalkboard Color Conversion

Listings below indicate color sample, stitching order and suggested thread color number. Most numbers indicate Isacord thread. Colors beginning with 20501 refer to YLI Fine Metallics, 7 refer to Yenmet Metallic, 8 refer to YLI Variations Variegated Thread and 9 refer to Isacord Multicolor Variegated.

12592-01 Tile 1

■ 1. Background.....	0138
■ 2. Dark Green Tree Detail.....	0112
■ 3. Medium Green Tree Detail.....	0131
□ 4. Light Green Tree Detail.....	0015
■ 5. Seam.....	0138

12592-02 Tile 2

■ 1. Background.....	0138
■ 2. Dark Green Tree Leaves.....	0112
■ 3. Medium Green Tree Leaves.....	0131
□ 4. Light Green Tree Leaves.....	0015
■ 5. Ornament.....	0131
■ 6. Ornament Hook.....	0131
□ 7. Star.....	0015
□ 8. Star Detail.....	0015
■ 9. Seam.....	0138

12592-03 Tile 3

■ 1. Background.....	0138
□ 2. Garland.....	0015
■ 3. Seam.....	0138

12592-04 Tile 4

■ 1. Background.....	0138
■ 2. Wreath Leaf.....	0131
□ 3. Garland & Wreath Detail.....	0015
■ 4. Garland Lights.....	7005
□ 5. Candle Glass.....	0015
□ 6. Candles & Lights.....	0015
■ 7. Flames.....	0131
■ 8. Seam.....	0138

12592-05 Tile 5

■ 1. Background.....	0138
□ 2. Dark Green Leaves.....	0015
■ 3. Lime Green Leaves.....	0131
□ 4. Leaf Shading & Outlines.....	0015
■ 5. Garland Light.....	7005
■ 6. Berries.....	0131
□ 7. Light Center.....	0015
■ 8. Seam.....	0138

12592-06 Tile 6

■ 1. Background.....	0138
■ 2. Dark Green Tree Leaves.....	0112
■ 3. Medium Green Tree Leaves.....	0131
□ 4. Light Green Tree Leaves.....	0015
■ 5. Tree Lights.....	7005
■ 6. Yellow Ornament Detail.....	0131
□ 7. Tan Ornament Detail.....	0015
■ 8. Red Ornament Detail.....	0131
□ 9. Dark Red Ornament Detail.....	0015
■ 10. Ornament Hook.....	0131
□ 11. Light Centers.....	0015
■ 12. Seam.....	0138

12592-07 Tile 7

■ 1. Dark Green Tree Leaves.....	0112
■ 2. Medium Green Tree Leaves.....	0131
□ 3. Light Green Tree Leaves.....	0015
■ 4. Light Yellow Detail.....	0131
■ 5. Light Red Ornament Detail.....	0131
□ 6. Dark Red Ornament Detail.....	0015
□ 7. Tan Ornament Detail.....	0015
■ 8. Silver Detail.....	7005
□ 9. White Detail.....	0015
□ 10. Light Gray Ornament Hook.....	0015
■ 11. Dark Gray Ornament Hook.....	0131
■ 12. Light Red Center Detail.....	0131
■ 13. Seam.....	0138

12592-08 Tile 8

■ 1. Background.....	0138
■ 2. Dark Green Tree Leaves.....	0112
■ 3. Medium Green Tree Leaves.....	0131
□ 4. Light Green Tree Leaves.....	0015
□ 5. Garland.....	0015
■ 6. Brown Mantle Detail.....	0131
■ 7. Dark Brown Mantle Detail.....	0131
□ 8. Dark Brown Mantle Outline.....	0015
□ 9. Light Gray Detail.....	0015
■ 10. Light Red Detail.....	0131
□ 11. Dark Red Ornament Detail.....	0015
■ 12. Light Red Ornament Detail.....	0131
■ 13. Light Yellow Ornament Detail.....	0131
■ 14. Ornament Hook.....	0131
■ 15. Light.....	7005
□ 16. Light White Center.....	0015
■ 17. Seam.....	0138

12592-09 Tile 9

■ 1. Background.....	0138
□ 2. Garland.....	0015
■ 3. Brown Fireplace Detail.....	0131
■ 4. Dark Brown Fireplace Detail.....	0131
■ 5. Garland Light.....	7005
□ 6. White Detail.....	0015
■ 7. Light Brown Detail.....	0131
□ 8. Dark Brown Fireplace Outline.....	0015
□ 9. Light Gray Detail.....	0015
■ 10. Light Red Detail.....	0131
□ 11. Dark Red Detail.....	0015
□ 12. Gold Detail.....	0015
■ 13. Light Yellow Detail.....	0131
■ 14. Green Detail.....	0131
■ 15. Stocking Outlines.....	0131
■ 16. Seam.....	0138

12592-10 Tile 10

□ 1. Garland.....	0015
■ 2. Brown Fireplace Detail.....	0131
■ 3. Dark Brown Fireplace Detail.....	0131
■ 4. Dark Green Stocking Detail.....	0112
■ 5. Yellow Detail.....	0131
■ 6. Medium Green Detail.....	0131
■ 7. Light Brown Detail.....	0131
□ 8. Dark Brown Detail.....	0015
□ 9. Gold Bird Detail.....	0015
□ 10. White Stocking Cuff.....	0015
□ 11. Light Gray Detail.....	0015
■ 12. Light Red Bead Detail.....	0131
□ 13. Heel & Toe Detail.....	0015
■ 14. Seam.....	0138

12592-11 Tile 11

■ 1. Dark Green Tree Leaves.....	0112
■ 2. Medium Green Tree Leaves.....	0131
□ 3. Light Green Tree Leaves.....	0015
■ 4. Silver Lights.....	7005
□ 5. Light White Center.....	0015
■ 6. Yellow Ornament Detail.....	0131
■ 7. Green Ornament Detail.....	0131
■ 8. Light Red Ornament Detail.....	0131
□ 9. Dark Red Ornament Detail.....	0015
□ 10. Light Gray Ornament Hook.....	0015
□ 11. Tan Ornament Detail.....	0015
■ 12. Dark Gray Ornament Hook.....	0131
■ 13. Seam.....	0138

12592-12 Tile 12

■ 1. Dark Green Tree Leaves.....	0112
■ 2. Medium Green Tree Leaves.....	0131
□ 3. Light Green Tree Leaves.....	0015
■ 4. Yellow Ornament Detail.....	0131
■ 5. Light Red Ornament Detail.....	0131
□ 6. Dark Red Ornament Detail.....	0015
□ 7. Tan Ornament Detail.....	0015
■ 8. Dark Gray Ornament Hooks.....	0131
■ 9. Silver Lights.....	7005
□ 10. Lights White Center.....	0015
■ 11. Green Ornament Detail.....	0131
■ 12. Seam.....	0138

12592-13 Tile 13

■ 1. Background.....	0138
■ 2. Dark Green Tree Leaves.....	0112
■ 3. Medium Green Tree Leaves.....	0131
□ 4. Light Green Tree Leaves.....	0015
■ 5. Yellow Ornament Detail.....	0131
□ 6. Dark Red Ornament Detail.....	0015
■ 7. Light Red Ornament Detail.....	0131
□ 8. Tan Ornament Detail.....	0015
□ 9. Dark Red Ornament Detail.....	0015
■ 10. Light Yellow Ornament Center.....	0131
□ 11. Light Gray Ornament Hook.....	0015
■ 12. Silver Lights.....	7005
□ 13. Lights White Center.....	0015
■ 14. Seam.....	0138

12592-14 Tile 14

■ 1. Background.....	0138
□ 2. Light Green Tree Leaves.....	0015
■ 3. Medium Brown Fireplace Detail.....	0131
■ 4. Dark Brown Fireplace Detail.....	0131
■ 5. Light Brown Fireplace Detail.....	0131
■ 6. Seam.....	0138

12592-15 Tile 15

■ 1. Medium Brown Brick Detail.....	0131
■ 2. Light Brown Brick Detail.....	0131
■ 3. Dark Brown Brick & Wood Detail.....	0131
■ 4. Orange Flames.....	0131
□ 5. Gold Flames.....	0015
■ 6. Seam.....	0138

12592-16 Tile 16

■ 1. Dark Green Tree Detail.....	0112
■ 2. Medium Green Tree Detail.....	0131
□ 3. Light Green Tree Detail.....	0015
■ 4. Light Green Present Detail.....	0131
■ 5. Horse Detail.....	0131
■ 6. Mane, Saddle & Face.....	0131
□ 7. Horse, Saddle Outlines & Detail.....	0015
□ 8. Horse Outlines.....	0015
■ 9. Light Red Tree Skirt.....	0131
■ 10. Red Details.....	0131
□ 11. Dark Red Detail.....	0015
■ 12. Silver Light.....	7005
□ 13. Light White Center.....	0015
■ 14. Seam.....	0138



Night Before Christmas

Chalkboard Color Conversion

Listings below indicate color sample, stitching order and suggested thread color number. Most numbers indicate Isacord thread. Colors beginning with 20501 refer to YLI Fine Metallics, 7 refer to Yenmet Metallic, 8 refer to YLI Variations Variegated Thread and 9 refer to Isacord Multicolor Variegated.

12592-17 Tile 17

■ 1. Dark Green Tree Detail.....	0112
■ 2. Medium Green Tree Detail.....	0131
□ 3. Light Green Tree Detail.....	0015
■ 4. Light Green Present Detail.....	0131
■ 5. Tree Trunk.....	0131
■ 6. Light Red Tree Skirt.....	0131
■ 7. Ribbon, Present & Ornament Detail.....	0131
■ 8. Yellow Ornament Detail.....	0131
□ 9. Tan Ornament Detail.....	0015
□ 10. Dark Red Detail.....	0015
□ 11. Light Gray Ornament Hooks.....	0015
■ 12. Silver Light.....	7005
□ 13. Light White Detail.....	0015
■ 14. Seam.....	0138

12592-18 Tile 18

■ 1. Dark Green Tree Detail.....	0112
■ 2. Medium Green Tree Detail.....	0131
□ 3. Light Green Tree Detail.....	0015
■ 4. Light Red Tree Skirt.....	0131
■ 5. Green Gift Detail.....	0131
■ 6. Sea Green Gift Detail.....	0131
■ 7. Lime Green Gift, Ribbon & Ornament Detail.....	0131
□ 8. Dark Green Gift & Ornament Detail.....	0015
■ 9. Red Gift & Ornament Detail.....	0131
■ 10. Yellow Ornament Detail.....	0131
□ 11. Dark Red Gift & Ornament Detail.....	0015
□ 12. Tan Ornament Detail.....	0015
□ 13. Light Gray Ornament Hook.....	0015
■ 14. Silver Light.....	7005
□ 15. Light White Center.....	0015
■ 16. Seam.....	0138

12592-19 Tile 19

■ 1. Medium Brown Fireplace Detail.....	0131
■ 2. Light Brown Fireplace & Floor Detail.....	0131
■ 3. Dark Brown Fireplace Detail.....	0131
□ 4. Dark Brown Linework.....	0015
□ 5. Light Green Detail.....	0015
■ 6. Medium Green Tree & Gift Detail.....	0131
■ 7. Sea Green Gift Detail.....	0131
■ 8. Yellow Trumpet Detail.....	0131
□ 9. Tan Trumpet Outline.....	0015
□ 10. Dark Red Bow.....	0015
■ 11. Light Red Bow.....	0131
□ 12. Light Gray Fireplace Floor.....	0015
■ 13. Seam.....	0138

12592-20 Tile 20

□ 1. Light Gray Fireplace.....	0015
■ 2. Light Brown Wood Floor.....	0131
□ 3. Dark Brown Fireplace Floor Detail.....	0015
■ 4. Medium Brown Logs.....	0131
■ 5. Dark Brown Logs.....	0131
■ 6. Log Fire Detail.....	0131
□ 7. Gold Flames.....	0015
■ 8. Dark Gray Fireplace Iron.....	0131
□ 9. Dark Brown Fireplace Iron.....	0015
■ 10. Seam.....	0138

12592-21 Tile 21

■ 1. Light Red Detail.....	0131
■ 2. Red Gift.....	0131
□ 3. Dark Red Shading.....	0015
■ 4. Horse.....	0131
□ 5. Lime Green Gift.....	0131
□ 6. Rocking Horse Legs.....	0015
■ 7. Rocking Horse Legs Shading.....	0131
□ 8. Rocking Horse Outlines.....	0015
■ 9. Dark Gray Detail.....	0131
□ 10. Design Outlines.....	0015
■ 11. Seam.....	0138

12592-22 Tile 22

■ 1. Light Red Detail.....	0131
■ 2. Red Gift Detail.....	0131
□ 3. Dark Red Shading & Gift Detail.....	0015
□ 4. Brown Tree Trunk.....	0131
■ 5. Dark Green Gift Detail.....	0112
■ 6. Bear.....	0131
■ 7. Bow Tie.....	0131
□ 8. Light Green Bow Outlines.....	0015
□ 9. Present Detail.....	0015
□ 10. Dark Brown Bear Shading & Outlines.....	0015
■ 11. Bear Yellow Detail.....	0131
■ 12. Eyes & Nose.....	0131
■ 13. Seam.....	0138

12592-23 Tile 23

■ 1. Light Red Detail.....	0131
■ 2. Red Detail.....	0131
□ 3. Dark Red Shading & Detail.....	0015
■ 4. Dark Green Gift Detail.....	0112
■ 5. Yellow Ribbon.....	0131
□ 6. Ribbon Outline.....	0015
■ 7. Lime Green Gift Detail.....	0131
□ 8. Medium Green Gift Detail.....	0015
□ 9. Dark Green Gift Outlines.....	0015
□ 10. White Drum Detail.....	0015
■ 11. Dark Gray Drum Detail.....	0131
■ 12. Dark Green Background Gift.....	0131
■ 13. Floor Detail.....	0131
■ 14. Seam.....	0138

12592-24 Tile 24

■ 1. Medium Green Gift.....	0131
■ 2. Sea Green Gift Detail.....	0131
■ 3. Yellow Trumpet Detail.....	0131
□ 4. Tan Trumpet Outline.....	0015
□ 5. Light Green Gift Detail.....	0015
■ 6. Lime Green Gift Detail.....	0131
■ 7. Red Bow.....	0131
□ 8. Dark Red Bow.....	0015
□ 9. Dark Green Gift Outline.....	0015
□ 10. Light Green Gift Outline.....	0015
■ 11. Floor Detail.....	0131
■ 12. Seam.....	0138

12592-25 Tile 25

■ 1. Floor Detail.....	0131
■ 2. Seam.....	0138

12592-26 Top & Bottom Borders

■ 1. Yellow Detail.....	0131
■ 2. Red Detail & Motif.....	0131
■ 3. Yellow Detail.....	0131
■ 4. Seam.....	0131

12592-27 Side Borders

■ 1. Yellow Detail.....	0131
■ 2. Red Detail & Motif.....	0131
■ 3. Yellow Detail.....	0131
■ 4. Seam.....	0131

12592-28 Corner 1

■ 1. Yellow Detail.....	0131
■ 2. Red Detail & Motif.....	0131
■ 3. Yellow Detail.....	0131
■ 4. Seam.....	0131

12592-29 Corner 2

■ 1. Yellow Detail.....	0131
■ 2. Red Detail & Motif.....	0131
■ 3. Yellow Detail.....	0131
■ 4. Seam.....	0131

Isacord / Yenmet Metallic Thread Colors Used in "Night Before Christmas" Collection #12592

0015 White
0112 Leadville

0131 Smoke
0138 Heavy Storm

7005 Silver Metallic



Night Before Christmas

Instructions

This new tiling scene features a home decorated for Christmas with loose stitches, and few satins for easy stitching. The tree and its trimmings, a warm fireplace with stockings hung above, and the presents themselves, all sit waiting for the family to wake on Christmas morning. Two colorway options are available.

Supplies

- OESD embroidery collection Night Before Christmas #12592
- Embroidery thread
- Bobbin thread
- Temporary spray adhesive
- Heavy weight tear away stabilizer
- 1 yd. OR 32" x 42" cotton batting
- Curved basting safety pins
- Colored Version
 - 2 1/2 yds. off-white fabric (blocks)
 - 3 yds. red fabric (borders, backing and binding)

OR

- Chalkboard Version
 - 5 1/2 yds. dark gray fabric (blocks, borders, backing and binding)

Cut

- Colored Version
 - (1) 32" x 42" red fabric (backing)
 - (4) 2 1/4" strips red fabric (binding)
- Chalkboard Version
 - (1) 32" x 42" gray fabric (backing)
 - (4) 2 1/4" strips gray fabric (binding)

Embroidery

- Embroider one of each design file 12592-01 through 12592-25 for the scenic center of the wall hanging on the off-white fabric for the colored version or gray fabric for the chalkboard version using two layers of heavy weight tear away stabilizer in each hooping. Be sure to use temporary spray adhesive to adhere all layers of stabilizer and fabric together for best stitch results.

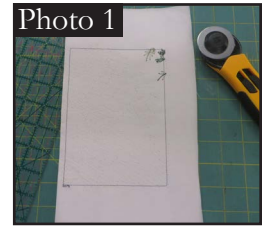
NOTE: Follow the thread conversion chart for the chalkboard version.

- Embroider border pieces on red fabric for the colored version and gray fabric for the chalkboard version: **Refer to Diagram**
 - 10 x short border 12592-26 (top & bottom)
 - 10 x long border 12592-27 (sides)
 - 2 x corner 1 12592-28
 - 2 x corner 2 12592-29
- The last thing that will stitch in each of these designs is a border that is referred to on the thread chart as "Seam". This stitch is very important in the process of assembling the wall hanging. It is vital that it is not skipped when embroidering. Stitch this in a thread color that will blend with the background fabric.
- Once the embroidery process is complete, trim away excess fabric by cutting 1/4" away from the "Seam". This process is easily done using a rotary cutter and ruler.

Diagram

12592-28	12592-26	12592-26	12592-26	12592-26	12592-26	12592-29
12592-27	12592-01	12592-02	12592-03	12592-04	12592-05	12592-27
12592-27	12592-06	12592-07	12592-08	12592-09	12592-10	12592-27
12592-27	12592-11	12592-12	12592-13	12592-14	12592-15	12592-27
12592-27	12592-16	12592-17	12592-18	12592-19	12592-20	12592-27
12592-27	12592-21	12592-22	12592-23	12592-24	12592-25	12592-27
12592-29	12592-26	12592-26	12592-26	12592-26	12592-26	12592-28

NOTE: It may be easier to cut with the back of the block showing since the “Seam” was stitched in a thread color that blended in with the background fabric. **PHOTO 1**



Construction of Blocks:

- After each block has been trimmed, lay out the pieces near your machine so that it is easy to put the blocks together. **Refer to Diagram**
- Right sides together and pressing seams as you go, use a ¼" seam allowance, or simply stitch directly on top of the seam stitch that stitched last during the embroidery process and stitch together the scenic center forming rows. **PHOTO 2**
- When the above step is complete you will have five stitched rows. **PHOTO 2**
- Stitch the five rows together in the same manner to complete the scenic center of the wallhanging. Make sure as you sew that your intersections line up between the rows. **PHOTO 3**
- Right sides together and pressing seams as you go, use a ¼" seam allowance, or simply stitch directly on top of the seam stitch that stitched last during the embroidery process and stitch five long border pieces short end to short end for both long sides. Stitching in the same manner, stitch two corner and five short border pieces short end to short end forming top and bottom border rows following diagram. **PHOTO 4**
- Continuing in the same manner, stitch a border to each long side of the scenic center. Stitch the top and bottom border rows to the top and bottom of the scenic center. **PHOTOS 5 & 6**
- Layer a quilt sandwich, by placing back wrong side up, cotton batting, and the tiling scene right side up. Use curved safety pins or temporary spray adhesive to baste the layers together. **PHOTO 7**
- Quilt as desired. In our sample we simply stitched in the ditch.
- Square up the quilt, this is trimming the quilt until the sides are equal. This prepares the quilt for stitching on the binding.
- Stitch on the binding as desired. For stitching on the binding the mitered corner technique was used.

