

# FREESTANDING LUMINOUS BUTTERFLIES



6

Designs



# THREAD LIST



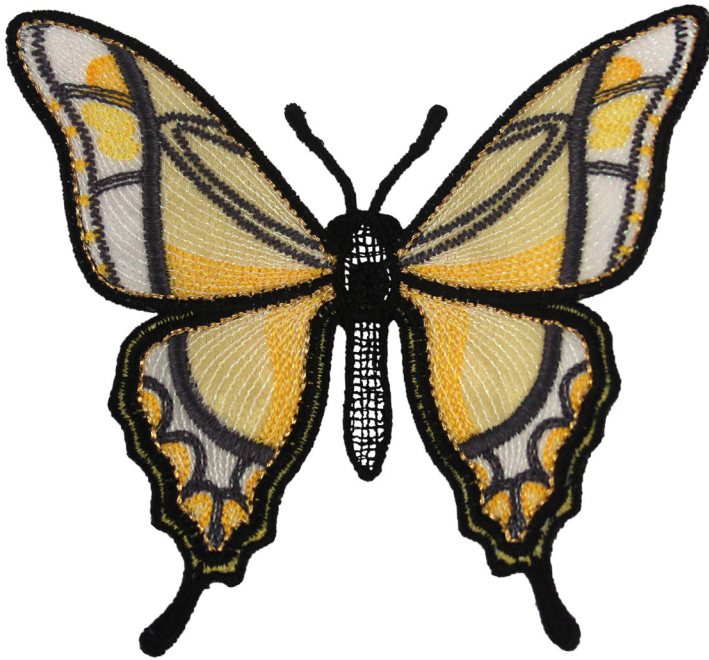
## Isacord Thread Colors

0020 Black	4643 Amazon
0131 Smoke	5115 Baccarat Green
0138 Heavy Storm	5934 Moss Green
0310 Yellow	7003 (AN-1) Pearlescence White
0311 Canary	7009 (S-1) Platinum
1300 Tangerine	7013 (S-14) Mayan Gold
2715 Pansy	7029 (AN-3) Pearlescence Light Blue
2721 Very Berry	7030 (AN-4) Pearlescence Peach
3543 Royal Blue	7032 (AN-6) Pearlescence Green
3650 Ice Cap	7033 (AN-7) Pearlescence Purple
4174 Charcoal	7036 (AN-10) Pearlescence Teal
4410 Aqua Velva	

**\* Project instructions included after design list.**

**Note: One spool of 1000 meter thread is adequate for the project unless otherwise noted.**

Note: Some designs in this collection may have been created using unique special stitches and/or techniques. To preserve design integrity when rescaling or rotating designs in your software, always rescale or rotate designs using the handles directly on-screen.



**12600-01 Butterfly 1 FSA**

Size Inches: 4.29 X 3.78 in.      Size mm: 108.97 X 96.01 mm      Stitch Count: 20,369 St.

■	1. Inner Wings Placement Stitch .....	0020
■	2. Inner Wings Cut Line & Tackdown .....	0020
■	3. Outer Wings Placement Stitch .....	0020
■	4. Outer Wings Cut Line & Tackdown.....	0020
□	5. Light Yellow Iridescent Linework .....	7003
■	6. Light Yellow Detail .....	0310
■	7. Dark Yellow Outer Detail .....	0311
■	8. Dark Yellow Inner Detail .....	0311
■	9. Gray Veins.....	0138
■	10. Cover Stitch & Black Detail .....	0020
■	11. Metallic Gold Detail .....	7013



**12600-02 Butterfly 2 FSA**

Size Inches: 4.23 X 3.07 in.      Size mm: 107.44 X 77.98 mm      Stitch Count: 21,213 St.

■	1. Inner Wings Placement Stitch .....	0020
■	2. Inner Wings Cut Line & Tackdown .....	0020
■	3. Outer Wings Placement Stitch .....	0020
■	4. Outer Wings Cut Line & Tackdown.....	0020
■	5. Light Green Iridescent Detail.....	7032
■	6. Gray Detail .....	0131
□	7. Light Yellow Iridescent Detail.....	7003
■	8. Moss Green Detail.....	5934
■	9. Cover Stitch & Black Detail .....	0020
■	10. Metallic Silver Detail .....	7009
■	11. Metallic Gold Detail .....	7013

Note: Some designs in this collection may have been created using unique special stitches and/or techniques. To preserve design integrity when rescaling or rotating designs in your software, always rescale or rotate designs using the handles directly on-screen.



**12600-03 Butterfly 3 FSA**

Size Inches:                      Size mm:                      Stitch Count:  
 4.68 X 3.69 in.    118.87 X 93.73 mm    25,816 St.

- 1. Wings Placement Stitch ..... 0020
- 2. Wings Cut Line & Tackdown..... 0020
- 3. Medium Blue Iridescent Detail..... 7036
- 4. Light Blue Inner Wing Shading..... 3650
- 5. Light Blue Outer Wing Lace ..... 3650
- 6. Dark Gray Lace ..... 0138
- 7. Dark Blue Shading ..... 3543
- 8. Cover Stitch & Black Detail ..... 0020
- 9. Metallic Gold Detail ..... 7013



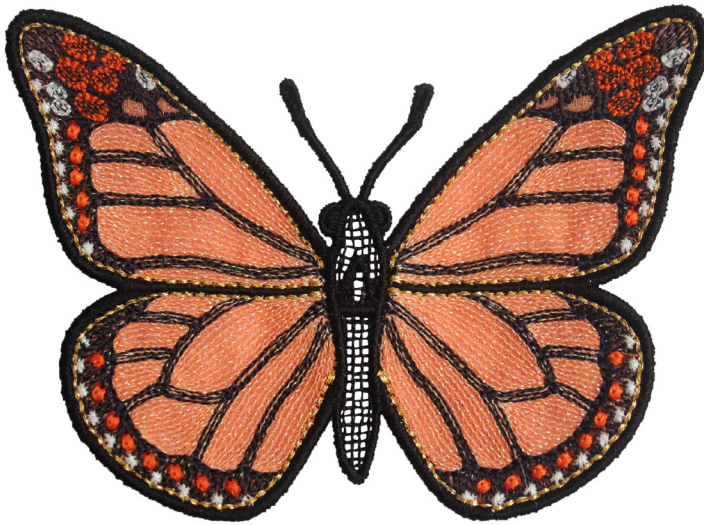
**12600-04 Butterfly 4 FSA**

Size Inches:                      Size mm:                      Stitch Count:  
 3.73 X 3.09 in.    94.74 X 78.49 mm    16,248 St.

- 1. Wings Placement Stitch ..... 0020
- 2. Wings Cut Line & Tackdown..... 0020
- 3. Pale Blue Iridescent Detail ..... 7029
- 4. Medium Blue Shading ..... 4410
- 5. Light Blue Shading ..... 5115
- 6. Light Yellow Iridescent Detail..... 7003
- 7. Dark Blue Shading ..... 4643
- 8. Cover Stitch & Black Detail ..... 0020
- 9. Metallic Gold Detail ..... 7013
- 10. Metallic Silver Detail ..... 7009



Note: Some designs in this collection may have been created using unique special stitches and/or techniques. To preserve design integrity when rescaling or rotating designs in your software, always rescale or rotate designs using the handles directly on-screen.



**12600-05 Butterfly 5 FSA**

Size Inches:                      Size mm:                      Stitch Count:  
 4.19 X 2.92 in.    106.43 X 74.17 mm    17,943 St.

- 1. Wings Placement Stitch ..... 0020
- 2. Wings Cut Line & Tackdown..... 0020
- 3. Light Orange Iridescent..... 7030
- 4. Dark Gray Detail..... 4174
- 5. Light Yellow Iridescent Spots..... 7003
- 6. Orange Shading ..... 1300
- 7. Cover Stitch & Black Detail ..... 0020
- 8. Metallic Gold Detail ..... 7013



**12600-06 Butterfly 6 FSA**

Size Inches:                      Size mm:                      Stitch Count:  
 4.51 X 2.57 in.    114.55 X 65.28 mm    17,156 St.

- 1. Wings Placement Stitch ..... 0020
- 2. Wings Cut Line & Tackdown..... 0020
- 3. Light Purple Iridescent Detail ..... 7033
- 4. Medium Purple Shading ..... 2721
- 5. Dark Purple Shading ..... 2715
- 6. Cover Stitch & Black Detail ..... 0020
- 7. Metallic Gold Detail ..... 7013

# COLLECTION SUPPLIES



## Stabilizers

---

- OESD BadgeMaster WashAway
- OESD AquaMesh WashAway

## Fabrics/Textiles

---

- Sheer organza or tulle 5" x 5"
- Note: Fabric sizes are estimates and may result in overage.

## Notions & Tools

---

- Expert Embroidery Tape WashAway
- OESD Perfect Embroidery Press Cloth
- Embroidery Needle Sharp 75/11

## Isacord Thread Colors

---

- Per thread chart



## Notes

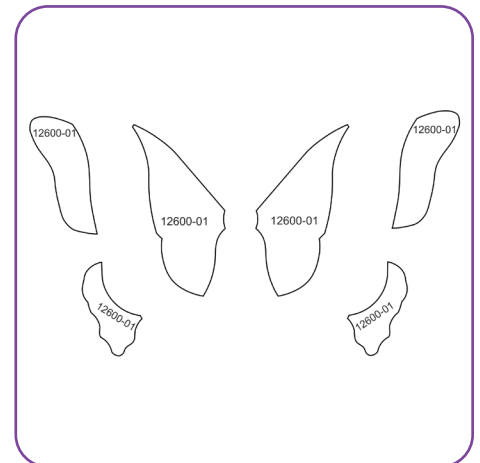
The freestanding applique instructions, included in the collection, are general instructions. For demonstration purposes, a sample design that best demonstrates the technique is shown. Fabric and thread requirements will vary by design, but the general technique is the same.

All designs are stitched with matching thread, top and bobbin.

Note: Some thread colors in instructions have been changed or digitally enhanced for better visibility.

## STEP 1

- Cut the applique fabrics 1/4"-1/2" larger than the templates that are included at the end of the instructions.



## STEP 2

- Hoop one layer BadgeMaster and one layer of AquaMesh for all designs.



# EMBROIDERY



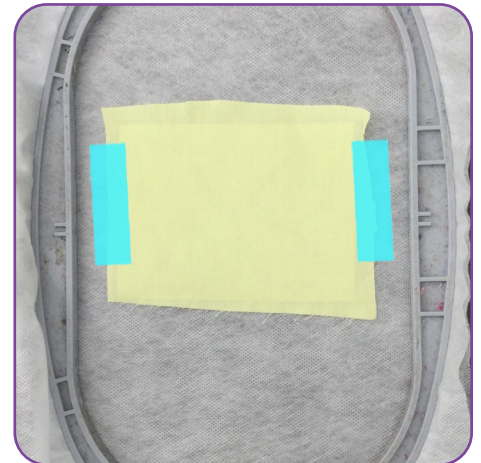
## STEP 3

- Load selected design into the machine.
- Example design is from 12761-03 Freestanding Luminous Garden.
- Thread the machine per the thread chart.
- Match the bobbin thread to the upper thread.
- Place hoop on the machine.
- Stitch Machine Step 1, Placement Stitch.



## STEP 4

- Remove the hoop from the machine, but NOT the project from the hoop.
- Place the hoop on a flat surface.
- Place the applique fabric, right side up, completely covering the placement stitch.
- Tape in place to secure.



## STEP 5

- Return the hoop to the machine.
- Stitch Machine Step 2, Cut Line and Tackdown.





# EMBROIDERY



## STEP 6

- Remove the hoop from the machine.
- Place hoop on a flat surface.
- Trim the excess fabric as close to the cut line as possible. If the outermost stitches (cut line) are cut, the inner stitches (tackdown) will hold the applique in place.



## STEP 7

- Return the hoop to the machine and stitch the remaining machine steps per the thread chart.
- Match the bobbin thread to the upper thread.



## STEP 8

- When the design is complete, remove the project from the hoop and trim the stabilizer 1/4" - 1/2" outside the design.
- Rinse in warm running water until the design is only slightly tacky.
- Place right side down on a non-stick surface to dry. Parchment paper or a cooling rack will prevent curling. Dry completely.
- Once dry, press right side down on a Perfect Embroidery Press Cloth.



## STEP 9

- The project is complete. Enjoy!



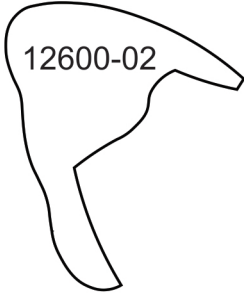


# APPLIQUE PATTERNS

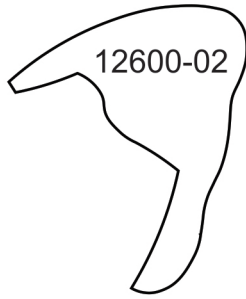


Print at 100%. No scaling. This box measures 1" x 1". Use the box as an accuracy guide when printing templates.

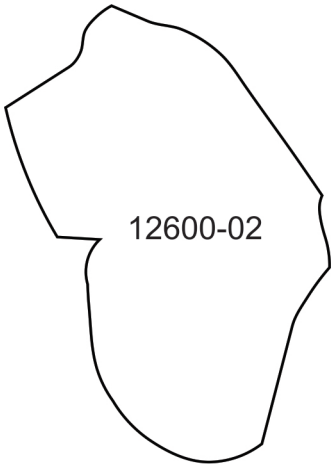
12600-02



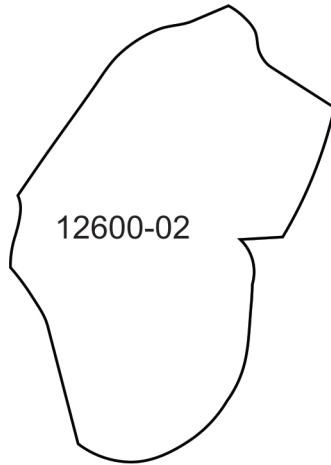
12600-02



12600-02



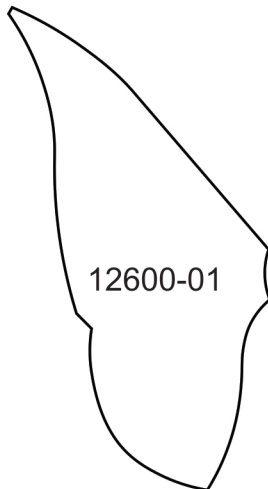
12600-02



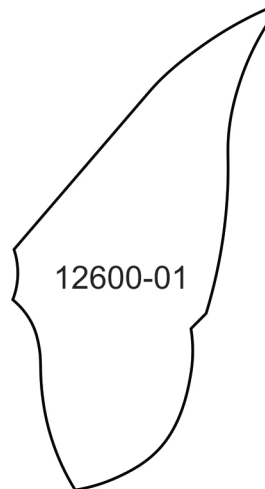
12600-01



12600-01



12600-01



12600-01



12600-01



12600-01



# APPLIQUE PATTERNS



Print at 100%. No scaling. This box measures 1" x 1". Use the box as an accuracy guide when printing templates.

12600-03

12600-03

12600-04

12600-04

12600-05

12600-06

12600-06

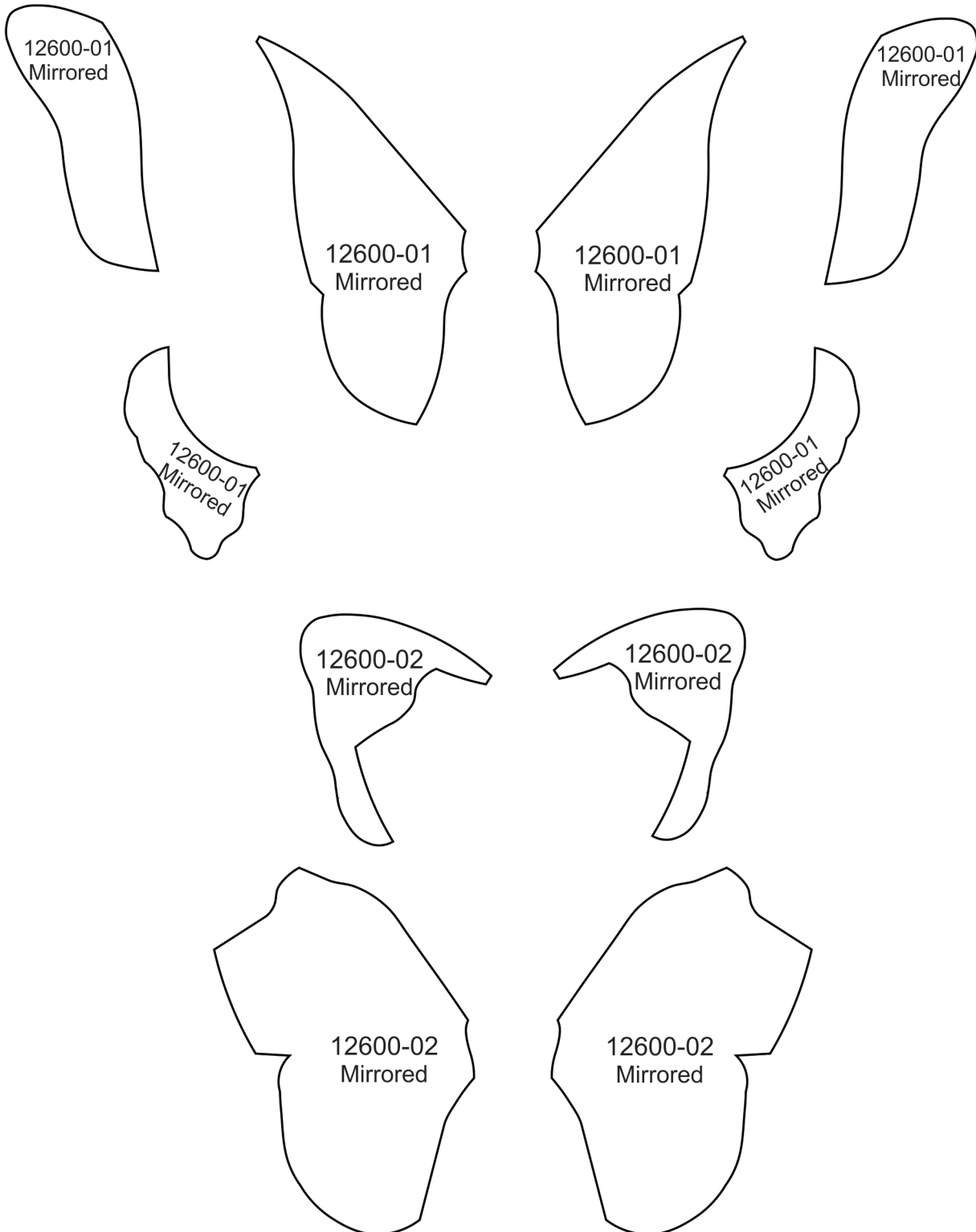
12600-05



# MIRRORED PATTERNS



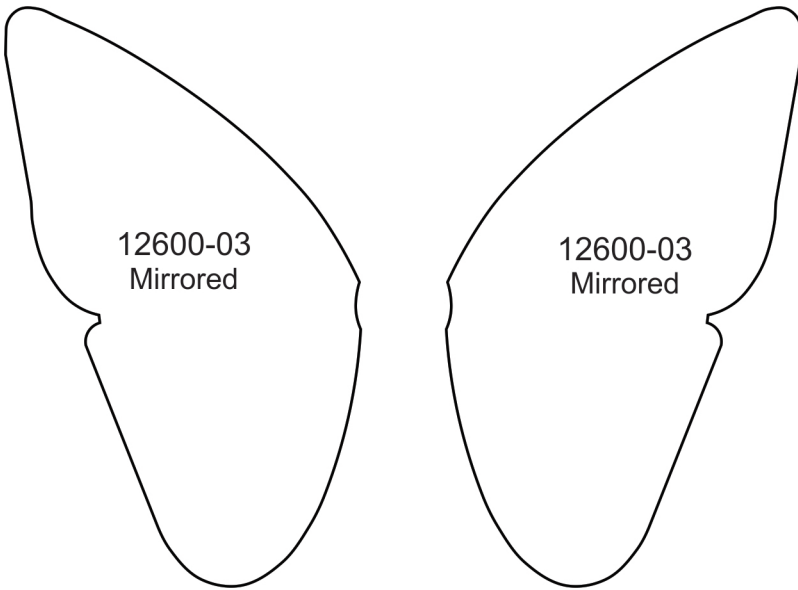
Print at 100%. No scaling. This box measures 1" x 1". Use the box as an accuracy guide when printing templates.



# MIRRORED PATTERNS

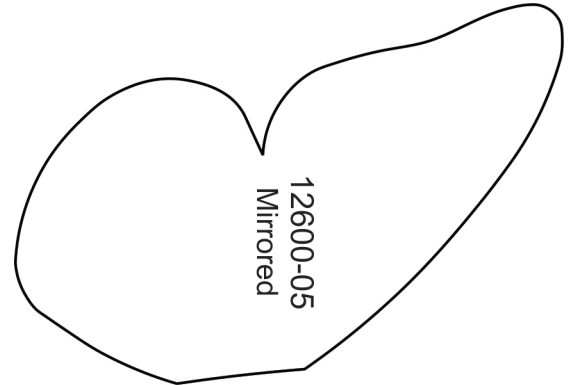


Print at 100%. No scaling. This box measures 1" x 1". Use the box as an accuracy guide when printing templates.

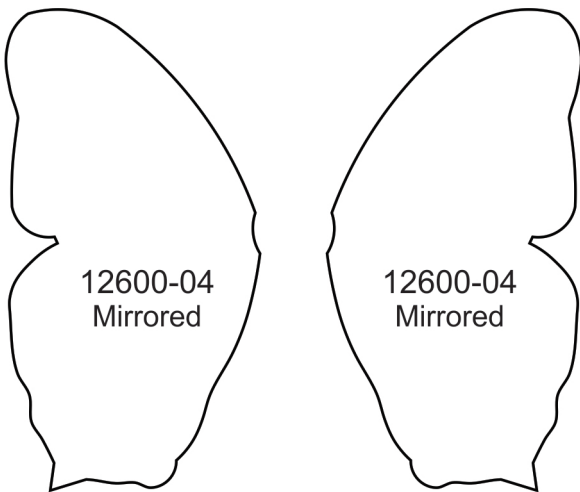


12600-03  
Mirrored

12600-03  
Mirrored

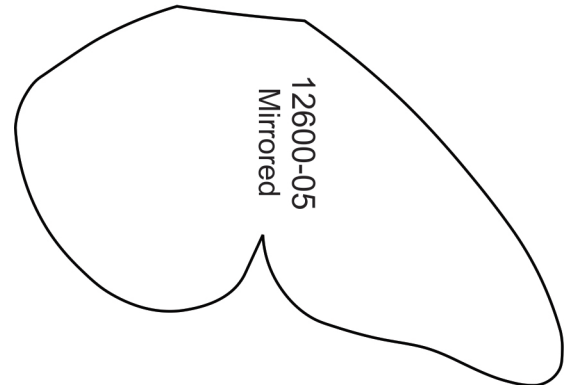


12600-05  
Mirrored

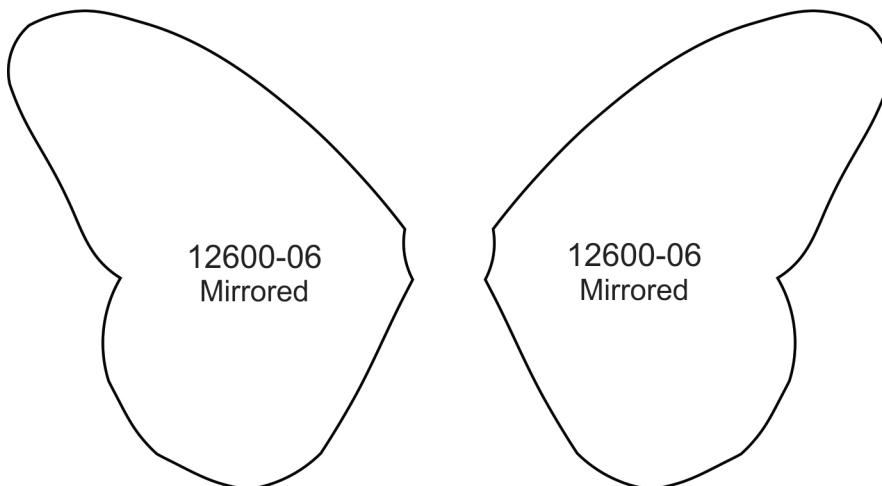


12600-04  
Mirrored

12600-04  
Mirrored



12600-05  
Mirrored



12600-06  
Mirrored

12600-06  
Mirrored