

Note: Some designs in this collection may have been created using unique special stitches and/or techniques. To preserve design integrity when rescaling or rotating designs in your software, always rescale or rotate designs using the handles directly on-screen.



12604-01 Floral Bracelet 1
2.07 X 6.02 in.
52.58 X 152.91 mm
11,524 St.



12604-02 Floral Bracelet 2
1.77 X 6.02 in.
44.96 X 152.91 mm
11,177 St.



12604-03 Floral Bracelet 3
1.50 X 6.02 in.
38.10 X 152.91 mm
8,851 St.



12604-04 Floral Bracelet 4
1.22 X 6.02 in.
30.99 X 152.91 mm
9,040 St.



12604-05 Leaves Bracelet
1.87 X 6.00 in.
47.50 X 152.40 mm
11,541 St.



12604-06 Curvy Bracelet
2.06 X 6.00 in.
52.32 X 152.40 mm
15,863 St.



12604-07 Blank Curvy Bracelet
2.06 X 6.00 in.
52.32 X 152.40 mm
5,040 St.

Design contains a loose fill.
 Some solid areas shown are not stitched.

Design is larger than 5" (127 mm) in either direction.
 Design is smaller than 1.5" (38.1 mm) in either direction.



In the Hoop Floral Bracelets

#12604 / 7 Designs

Listings below indicate color sample, stitching order and suggested thread color number. Most numbers indicate Isacord thread. Colors beginning with 20501 refer to YLI Fine Metallics, 7 refer to Yenmet Metallic, 8 refer to YLI Variations Variegated Thread and 9 refer to Isacord Multicolor Variegated.

12604-01 Floral Bracelet 1

1. Front Placement Stitch.....	0853
2. Front Cut Line & Tackdown	0853
3. White Leaves and Stems	0015
4. Gold Leaves and Stems.....	0704
5. Hot Pink Detail	2508
6. Pink Flower Detail	2532
7. Light Pink Flower Detail	2363
8. Hot Pink Linework	2508
9. Back Cut Line & Tackdown	0853
10. Cover Stitch.....	0853
11. E Stitch.....	2532

12604-02 Floral Bracelet 2

1. Front Placement Stitch.....	4610
2. Front Cut Line and Tackdown	4610
3. Dark Green Petals.....	4531
4. Medium Green Stem.....	4610
5. Light Green Petals and Flowers.....	4740
6. White Leaves and Stems	0015
7. Gold Flowers.....	0800
8. Orange Stems and Flowers	1310
9. Back Cut Line and Tackdown	4610
10. Cover Stitch.....	4610
11. E Stitch.....	1310

12604-03 Floral Bracelet 3

1. Front Placement Stitch.....	0020
2. Front Cut Line and Tackdown	0020
3. Green Flower Detail	4430
4. Lavender Flower Detail	3450
5. Light Purple Flower Detail	2640
6. Pink Flower Detail	2530
7. Green Flower Detail	4430
8. Pink Flower Detail	2530
9. Back Cut Line and Tackdown	0020
10. Cover Stitch.....	0020
11. E Stitch.....	0015

12604-04 Floral Bracelet 4

1. Front Placement Stitch.....	0630
2. Front Cut Line and Tackdown	0630
3. Leaves and Stems	2510
4. Light Orange Linework.....	1030
5. Orange Petals	1310
6. Red Petals.....	1805
7. Back Cut Line and Tackdown.....	0630
8. Cover Stitch.....	0630
9. E Stitch.....	2530

12604-05 Leaves Bracelet

1. Light Blue Fabric Placement Stitch	1055
2. Cut Line and Tackdown.....	1055
3. Orange Fabric Placement Stitch	1055
4. Cut Line and Tackdown.....	1055
5. Brown Fabric Placement Stitch.....	1055
6. Cut Line and Tackdown.....	1055
7. Teal Fabric Placement Stitch.....	1055
8. Cut Line and Tackdown.....	1055
9. Pink Fabric Placement Stitch	1055
10. Cut Line and Tackdown.....	1055
11. Dark Pink Linework	2320
12. White Linework.....	0015
13. Back Cut Line & Tackdown	1055
14. Cover Stitch.....	1055
15. E Stitch.....	2530

12604-06 Curvy Bracelet

1. Front Placement Stitch.....	0138
2. Front Cut Line and Tackdown	0138
3. Light Orange Detail	1030
4. Pink Detail	2532
5. Red Detail	1805
6. Orange Detail	1310
7. Light Pink Detail	2155
8. White Detail.....	0015
9. Back Cut Line and Tackdown.....	0020
10. Cover Stitch.....	0020
11. Gray E Stitch.....	0105

12604-07 Blank Curvy Bracelet

1. Front Placement Stitch.....	1310
2. Front Cut Line and Tackdown	1310
3. Back Cut Line and Tackdown.....	1310
4. Cover Stitch.....	1310
5. E Stitch.....	0800

Isacord Thread Colors Used in "In the Hoop Floral Bracelets"

Collection #12604

0015 White	1055 Bark	2530 Rose
0020 Black	1310 Hunter Orange	2532 Pretty in Pink
0105 Ash Mist	1805 Strawberry	2640 Frosted Plum
0138 Heavy Storm	2155 Pink Tulip	3450 Lavender
0630 Buttercup	2320 Raspberry	4430 Island Waters
0704 Gold	2363 Carnation	4531 Caribbean
0800 Goldenrod	2508 Hot Pink	4610 Deep Aqua
0853 Pecan	2510 Roseate	4740 Aquamarine
1030 Passion Fruit		

General Freestanding Appliqué Guidelines

Supplies:

Embroidery Thread:

- Use the same embroidery thread in the bobbin as the needle.

Needles:

- Use an Organ 80/12 Titanium needle for extended needle life.

Stabilizer:

- Use water-soluble stabilizer or film water-soluble stabilizer.

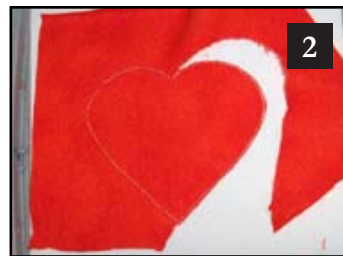
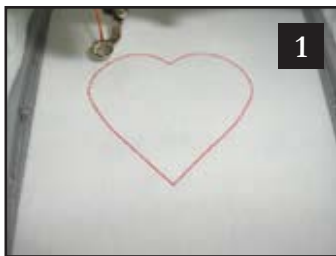
Handy Hints

For 3D Appliqué Projects:

- Adhere 2 layers of heavy weight stabilizer to the back of fabrics with temporary adhesive spray **BEFORE** hooping or placing down for tackdown and cut in place. This gives fabric a more rigid structure.

General Appliqué Instructions

1. Hoop two layers of water-soluble stabilizer.
2. Attach the hoop to the machine and select the design of your choice.
3. Stitch the Placement Stitch. **Photo 1**
4. Place a piece of appliqué fabric over the Placement Stitch so that it is completely covered.
5. Stitch the Cut Line & Tackdown Stitch.
6. Carefully cut away the excess appliqué fabric. **Photo 2**
7. Stitch the remainder of the design and repeat for any remaining pieces. **Photo 3**
8. Remove the hoop from the machine and the design from the hoop.
9. Trim excess stabilizer from the design.
10. Rinse away remaining stabilizer and allow it to dry.



Supplies

NOTE: Fabric listed is for one bracelet and the widest one.

- OESD embroidery collection In the Hoop Floral Bracelets #12604
- Heavy weight wash away stabilizer
- 2 ½" x 7" piece cotton fabric (bracelet front)
- 2 ½" x 7" piece cotton or leather type fabric (bracelet back)
- Temporary spray adhesive
- Isacord embroidery threads
- Embroidery machine
- Assorted bracelet closures including rings, lobster clasps, toggles, leather or cord strings of your choice
- Jewelry pliers

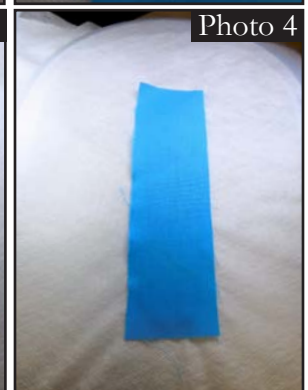
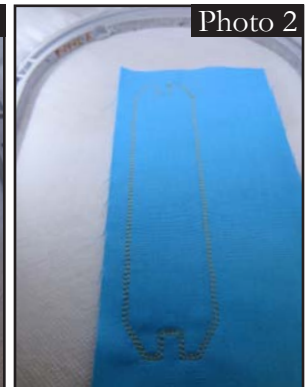
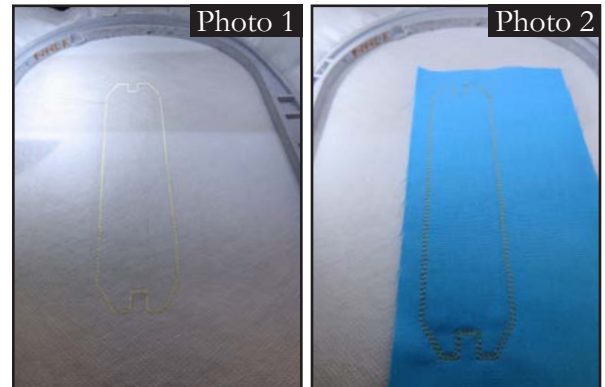
Embroider and Assemble

- Hoop 2 layers of heavy weight wash away stabilizer.
- Stitch first stitch of embroidery design which is the Design Placement Stitch. **PHOTO 1**
- Using temporary spray adhesive, lightly spray the Design Placement Stitch. Center and place bracelet front fabric over the Placement Stitch.
- Stitch the second stitch of embroidery design called Front Cut Line and Tackdown. **PHOTO 2**
- Take the hoop off the embroidery machine. Trim fabric along the outer cut line. **PHOTO 3**
- Stitch the next colors for the design on the bracelet according to the thread chart.
- Take the hoop off the embroidery machine. Lightly spray on the back of the hoop. Center and place bracelet back fabric right side out over the back of the hoop. **PHOTO 4**

NOTE: You may want to change the bobbin thread now to match the last color.

- Put the hoop back on the embroidery machine. Stitch the next color called Back Cut Line and Tackdown.
- Take the hoop off the embroidery machine. Trim fabric along the outer cut line. **PHOTO 5**
- The next color is the Cover Stitch/Match Bobbin. If you haven't already changed out your bobbin thread now is the time. **PHOTO 6**
- Stitch the last color called the E Stitch
- Remove the bracelet from the hoop. Remove the excess wash away stabilizer. **PHOTO 7**
- After the bracelet has dried, then add the bracelet closure of your choice. It can be as simple as

NOTE: Design pictured is for instructional purposes and is not included in this collection.



pulling a piece of leather string through the openings and tying in a small bow.

PHOTOS 8 & 9

- Another option is to add small rings and a small lobster clasp to hook into place. **PHOTO 10**

