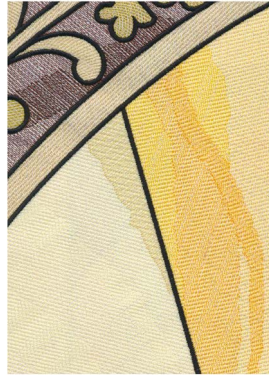




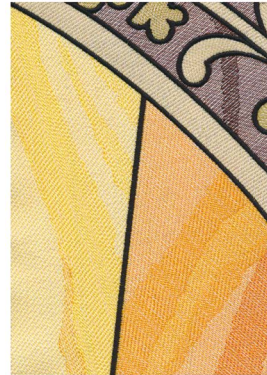
Note: Some designs in this collection may have been created using unique special stitches and/or techniques. To preserve design integrity when rescaling or rotating designs in your software, always rescale or rotate designs using the handles directly on-screen.



**12605-01 Tile 1**  
4.97 X 6.97 in.  
126.24 X 177.04 mm  
40,999 St. **L**



**12605-02 Tile 2**  
4.95 X 6.91 in.  
125.73 X 175.51 mm  
30,670 St. **L**



**12605-03 Tile 3**  
4.90 X 6.95 in.  
124.46 X 176.53 mm  
30,001 St. **L**



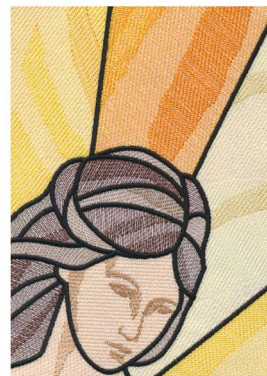
**12605-04 Tile 4**  
4.96 X 6.97 in.  
125.98 X 177.04 mm  
40,304 St. **L**



**12605-05 Tile 5**  
4.94 X 6.92 in.  
125.48 X 175.77 mm  
36,852 St. **L**



**12605-06 Tile 6**  
4.91 X 6.88 in.  
124.71 X 174.75 mm  
39,932 St. **L**



**12605-07 Tile 7**  
4.91 X 6.90 in.  
124.71 X 175.26 mm  
34,810 St. **L**



**12605-08 Tile 8**  
4.93 X 6.92 in.  
125.22 X 175.77 mm  
37,772 St. **L**



**12605-09 Tile 9**  
4.92 X 6.92 in.  
124.97 X 175.77 mm  
38,312 St. **L**



**12605-10 Tile 10**  
4.92 X 6.93 in.  
124.97 X 176.02 mm  
39,447 St. **L**



**12605-11 Tile 11**  
4.94 X 6.94 in.  
125.48 X 176.28 mm  
35,955 St. **L**



**12605-12 Tile 12**  
4.95 X 6.93 in.  
125.73 X 176.02 mm  
38,438 St. **L**

**L** Design contains a loose fill.

**S** Some solid areas shown are not stitched.

**L** Design is larger than 5" (127 mm) in either direction.

**S** Design is smaller than 1.5" (38.1 mm) in either direction.



Note: Some designs in this collection may have been created using unique special stitches and/or techniques. To preserve design integrity when rescaling or rotating designs in your software, always rescale or rotate designs using the handles directly on-screen.



**12605-13 Tile 13**  
4.92 X 6.92 in.  
124.97 X 175.77 mm  
32,629 St. **L**



**12605-14 Tile 14**  
4.93 X 6.94 in.  
125.22 X 176.28 mm  
33,947 St. **L**



**12605-15 Tile 15**  
4.93 X 6.94 in.  
125.22 X 176.28 mm  
34,690 St. **L**



**12605-16 Tile 16**  
4.93 X 6.93 in.  
125.22 X 176.02 mm  
34,294 St. **L**



**12605-17 Tile 17**  
4.92 X 6.92 in.  
124.97 X 175.77 mm  
32,756 St. **L**



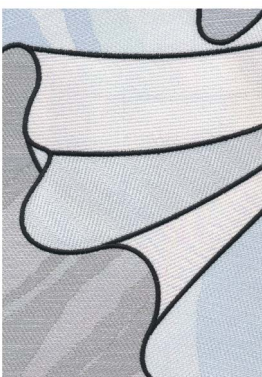
**12605-18 Tile 18**  
4.92 X 6.94 in.  
124.97 X 176.28 mm  
29,928 St. **L**



**12605-19 Tile 19**  
4.93 X 6.94 in.  
125.22 X 176.28 mm  
31,203 St. **L**



**12605-20 Tile 20**  
4.94 X 6.93 in.  
125.48 X 176.02 mm  
27,797 St. **L**



**12605-21 Tile 21**  
4.92 X 6.93 in.  
124.97 X 176.02 mm  
29,592 St. **L**



**12605-22 Tile 22**  
4.93 X 6.93 in.  
125.22 X 176.02 mm  
31,633 St. **L**



**12605-23 Tile 23**  
4.94 X 6.91 in.  
125.48 X 175.51 mm  
32,198 St. **L**



**12605-24 Tile 24**  
4.94 X 6.90 in.  
125.48 X 175.26 mm  
27,427 St. **L**

**L** Design contains a loose fill.

**S** Some solid areas shown are not stitched.

**L** Design is larger than 5" (127 mm) in either direction.

**S** Design is smaller than 1.5" (38.1 mm) in either direction.

Note: Some designs in this collection may have been created using unique special stitches and/or techniques. To preserve design integrity when rescaling or rotating designs in your software, always rescale or rotate designs using the handles directly on-screen.



**12605-25 Corner**  
3.31 X 3.30 in.  
84.07 X 83.82 mm  
9,902 St. **⌘**



**12605-26 Top & Bottom Border**  
5.08 X 3.33 in.  
129.03 X 84.58 mm  
17,235 St. **⌘ L**



**12605-27 Left Border**  
3.31 X 7.01 in.  
84.07 X 178.05 mm  
23,604 St. **⌘ L**



**12605-28 Right Border**  
3.31 X 7.01 in.  
84.07 X 178.05 mm  
23,604 St. **⌘ L**

**⌘** Design contains a loose fill.

**⚙** Some solid areas shown are not stitched.

**L** Design is larger than 5" (127 mm) in either direction.

**S** Design is smaller than 1.5" (38.1 mm) in either direction.





# Celestial Stained Glass Tiling Scene

#12605 / 28 Designs

Listings below indicate color sample, stitching order and suggested thread color number. Most numbers indicate Isacord thread. Colors beginning with 20501 refer to YLI Fine Metallics, 7 refer to Yenmet Metallic, 8 refer to YLI Variations Variegated Thread and 9 refer to Isacord Multicolor Variegated.

## 12605-01 Tile 1

	1. Basting & Brown Glass	1565
	2. Tan Shading	0722
	3. Medium Brown Glass	1346
	4. Dark Brown Shading	1366
	5. Light Gold Glass	0643
	6. Dark Gold Glass	0442
	7. Orange Glass	0904
	8. Light Orange Shading	0811
	9. Yellow Glass	0520
	10. White Shading	0015
	11. Leading	0020
	12. Seam Stitch	0015

## 12605-02 Tile 2

	1. Basting & Medium Brown Glass	1346
	2. Dark Brown Shading	1366
	3. Light Gold Glass	0643
	4. Dark Gold Glass	0442
	5. Light Yellow Glass	0520
	6. White Shading	0015
	7. Tan Shading	0532
	8. Dark Yellow Glass	0713
	9. Light Orange Shading	0811
	10. Leading	0020
	11. Seam Stitch	0015

## 12605-03 Tile 3

	1. Basting and Medium Brown Glass	1346
	2. Dark Brown Shading	1366
	3. Light Gold Glass	0643
	4. Dark Gold Glass	0442
	5. Yellow Glass	0713
	6. Light Orange Shading	0811
	7. Orange Glass	0904
	8. Light Orange Shading	0811
	9. Yellow Shading	0713
	10. Dark Orange Shading	1114
	11. Leading	0020
	12. Seam Stitch	0015

## 12605-04 Tile 4

	1. Basting & Brown Glass	1565
	2. Tan Shading	0722
	3. Medium Brown Glass	1346
	4. Dark Brown Shading	1366
	5. Light Gold Glass	0643
	6. Dark Gold Glass	0442
	7. Yellow Glass	0520
	8. Orange Glass	0904
	9. Dark Orange Shading	1114
	10. Leading	0020
	11. Seam Stitch	0015

## 12605-05 Tile 5

	1. Basting & Medium Brown Glass	1346
	2. Dark Brown Shading	1366
	3. Dark Gold Glass	0442
	4. Orange Glass	0904
	5. Light Orange Shading	0811
	6. Dark Orange Shading	1114
	7. Yellow Shading	0713
	8. Light Gold Glass	0643
	9. White Glass	0015
	10. Light Pink-Gray Glass & Shading	0182
	11. Medium Gray Glass	0131
	12. Dark Gray Shading	0108
	13. Pale Gray Shading	0145
	14. Light Gray Shading	0124
	15. Leading	0020
	16. Seam Stitch	0015

## 12605-06 Tile 6

	1. Basting & Orange Glass	0904
	2. Light Orange Shading	0811
	3. Yellow Glass	0520
	4. White Shading	0015
	5. Dark Yellow Glass	0713
	6. Light Orange Shading	0811
	7. Tan Shading	0532
	8. White Wing Glass	0015
	9. White Glass	0015
	10. Light Pink-Gray Glass & shading	0182
	11. Pale Gray Shading	0145
	12. Light Gray Shading	0124
	13. Light Tan Glass	1140
	14. Medium Brown Glass	1346
	15. Brown Glass	1565
	16. Light Brown Glass	0763
	17. Leading	0020
	18. Seam Stitch	0015

## 12605-07 Tile 7

	1. Basting & Dark Yellow Glass	0713
	2. Light Orange Shading	0811
	3. Orange Glass	0904
	4. Light Orange Shading	0811
	5. Dark Orange Shading	1114
	6. Yellow Shading	0713
	7. Light Yellow Glass	0520
	8. White Shading	0015
	9. Tan Shading	0532
	10. Light Tan Glass	1140
	11. Medium Brown Glass	1346
	12. Brown Glass	1565
	13. Light Brown Glass	0763
	14. Dark Tan Shading	1252
	15. Leading	0020
	16. Seam Stitch	0015

## 12605-08 Tile 8

	1. Basting & Medium Brown Glass	1346
	2. Dark Brown Shading	1366
	3. Dark Gold Glass	0442
	4. Light Gold Glass	0643
	5. Light Yellow Glass	0520
	6. White Shading	0015
	7. Tan Shading	0532
	8. Dark Yellow Glass	0713
	9. White Glass	0015
	10. Light Pink-Gray Glass & Shading	0182
	11. Medium Gray Glass	0131
	12. Dark Gray Shading	0108
	13. Pale Gray Shading	0145
	14. Leading	0020
	15. Seam Stitch	0015

## 12605-09 Tile 9

	1. Basting & Medium Gray Glass	0131
	2. Dark Gray Shading	0108
	3. White Wing Glass	0015
	4. White Glass	0015
	5. Light Pink-Gray Glass	0182
	6. Pale Gray Shading	0145
	7. Light Gray Wing Shading	0124
	8. Light Yellow Glass	0520
	9. Tan Shading	0532
	10. White Shading	0015
	11. Dark Yellow Glass	0713
	12. Light Orange Shading	0811
	13. Orange Glass	0904
	14. Light Gold Glass	0643
	15. Leading	0020
	16. Seam Stitch	0015

## 12605-10 Tile 10

	1. Basting & Light Pink-Gray Glass	0182
	2. Medium Gray Glass	0131
	3. Dark Gray Shading	0108
	4. Pale Gray Shading	0145
	5. Light Gray Shading	0124
	6. Light Tan Glass	1140
	7. White Glass	0015
	8. Light Blue Glass	3963
	9. Light Gray Glass & Shading	0145
	10. Medium Blue Shading	3761
	11. Medium Brown Glass & Shading	1565
	12. Dark Brown Glass	1346
	13. Leading	0020
	14. Seam Stitch	0015

## 12605-11 Tile 11

	1. Basting and Medium Gray Glass & Shading	0131
	2. Dark Gray Shading	0108
	3. Yellow Glass	0713
	4. White Glass	0015
	5. Light Pink-Gray Glass	0182
	6. Pale Gray Glass & Shading	0145
	7. Light Blue Glass & Shading	3963
	8. Medium Blue Shading	3761
	9. Tan Glass	1140
	10. Dark Tan Shading	1252
	11. Leading	0020
	12. Seam Stitch	0015

## 12605-12 Tile 12

	1. Basting & Medium Gray Glass	0131
	2. Dark Gray Shading	0108
	3. White Wing Glass	0015
	4. White Glass	0015
	5. Light Pink-Gray Glass & Shading	0182
	6. Pale Gray Shading	0145
	7. Light Gray Shading	0124
	8. Orange Glass	0904
	9. Light Blue Glass	3963
	10. Medium Blue Shading	3761
	11. Light Gold Glass	0643
	12. Leading	0020
	13. Seam Stitch	0015

## 12605-13 Tile 13

	1. Basting & Yellow Glass	0713
	2. Orange Glass	0904
	3. Yellow Shading	0713
	4. Light Orange Shading	0811
	5. Orange Shading	0811
	6. Dark Orange Shading	1114
	7. White Glass	0015
	8. Tan Glass	1140
	9. Light Pink-Gray Glass	0182
	10. Pale Gray Shading	0145
	11. Light Blue Glass & Shading	3963
	12. Medium Blue Shading	3761
	13. Dark Blue Shading	3962
	14. Leading	0020
	15. Seam Stitch	0015



# Celestial Stained Glass Tiling Scene

#12605 / 28 Designs

Listings below indicate color sample, stitching order and suggested thread color number. Most numbers indicate Isacord thread. Colors beginning with 20501 refer to YLI Fine Metallics, 7 refer to Yenmet Metallic, 8 refer to YLI Variations Variegated Thread and 9 refer to Isacord Multicolor Variegated.

## 12605-14 Tile 14

□	1. Basting & White Glass .....	0015
□	2. Light Pink-Gray Glass .....	0182
□	3. Pale Gray Shading .....	0145
□	4. Medium Gray Glass .....	0131
□	5. Dark Gray Shading .....	0108
□	6. Light Blue Glass .....	3963
□	7. Light Gray Shading .....	0124
□	8. Medium Blue Shading .....	3761
□	9. Dark Blue Shading .....	3962
□	10. Pale Gray Shading .....	0145
□	11. Leading .....	0020
□	12. Seam Stitch .....	0015

## 12605-15 Tile 15

□	1. Basting & White Glass .....	0015
□	2. Light Blue Glass .....	3963
□	3. Medium Blue Shading .....	3761
□	4. Dark Blue Shading .....	3962
□	5. White Wing Glass .....	0015
□	6. Light Pink-Gray Glass .....	0182
□	7. Pale Gray Shading .....	0145
□	8. Light Gray Shading .....	0124
□	9. Leading .....	0020
□	10. Seam Stitch .....	0015

## 12605-16 Tile 16

□	1. Basting & Orange Glass .....	0904
□	2. Yellow Glass .....	0520
□	3. White Shading .....	0015
□	4. Tan Shading .....	0532
□	5. White Wing Glass .....	0015
□	6. Light Pink-Gray Glass .....	0182
□	7. Pale Gray Shading .....	0145
□	8. Light Gray Shading .....	0124
□	9. White Glass .....	0015
□	10. Light Blue Glass .....	3963
□	11. Light Blue Glass .....	3761
□	12. Medium Blue Shading .....	0020
□	13. Seam Stitch .....	0015

## 12605-17 Tile 17

□	1. Basting & White Glass .....	0015
□	2. Light Blue Glass & Shading .....	3963
□	3. Medium Blue Shading .....	3761
□	4. Medium Gray Glass .....	0131
□	5. Pale Gray Shading .....	0145
□	6. Leading .....	0020
□	7. Seam Stitch .....	0015

## 12605-18 Tile 18

□	1. Basting & White Glass .....	0015
□	2. Light Blue Glass .....	3963
□	3. Pale Gray Shading .....	0145
□	4. Medium Blue Shading .....	3761
□	5. Dark Blue Shading .....	3962
□	6. Medium Gray Glass .....	0131
□	7. Light Pink-Gray Glass .....	0182
□	8. Pale Gray Shading .....	0145
□	9. Leading .....	0020
□	10. Seam Stitch .....	0015

## 12605-19 Tile 19

□	1. Basting & Light Pink-Gray .....	0182
□	2. Pale Gray Shading .....	0145
□	3. White Glass .....	0015
□	4. Light Blue Glass .....	3963
□	5. Medium Blue Shading .....	3761
□	6. Dark Blue Shading .....	3962
□	7. Pale Gray Shading .....	0145
□	8. Leading .....	0020
□	9. Seam Stitch .....	0015

## 12605-20 Tile 20

□	1. Basting & White Glass .....	0015
□	2. Light Blue Glass .....	3963
□	3. Medium Blue Shading .....	3761
□	4. Dark Blue Shading .....	3962
□	5. Leading .....	0020
□	6. Seam Stitch .....	0015

## 12605-21 Tile 21

□	1. Basting & White Glass .....	0015
□	2. Light Blue Glass .....	3963
□	3. Medium Blue Shading .....	3761
□	4. Pale Gray Shading .....	0145
□	5. Medium Gray Shading .....	0131
□	6. Leading .....	0020
□	7. Seam Stitch .....	0015

## 12605-22 Tile 22

□	1. Basting & White Glass .....	0015
□	2. Light Blue Glass .....	3963
□	3. Pale Gray Shading .....	0145
□	4. Medium Blue Glass & Shading .....	3761
□	5. Dark Blue Shading .....	3962
□	6. Medium Gray Glass .....	0131
□	7. Leading .....	0020
□	8. Seam Stitch .....	0015

## 12605-23 Tile 23

□	1. Basting & Light Blue Glass .....	3963
□	2. Medium Blue Glass & Shading .....	3761
□	3. Dark Blue Shading .....	3962
□	4. Pale Gray Glass .....	0145
□	5. Medium Gray Glass .....	0131
□	6. Leading .....	0020
□	7. Seam Stitch .....	0015

## 12605-24 Tile 24

□	1. Basting & Light Blue Glass .....	3963
□	2. White Glass .....	0015
□	3. Medium Blue Glass & Shading .....	3761
□	4. Medium Gray Glass .....	0131
□	5. Leading .....	0020
□	6. Seam Stitch .....	0015

## 12605-25 Corner

□	1. Basting & Brown Glass .....	1346
□	2. Light Pink Glass .....	2250
□	3. Green Glass .....	6133
□	4. Leading .....	0020
□	5. Seam Stitch .....	0015

## 12605-26 Top & Bottom Border

□	1. Basting & Dark Green Glass .....	6133
□	2. Medium Green Glass & Shading .....	5610
□	3. Bright Green Glass .....	5912
□	4. Blue Glass .....	4752
□	5. Dark Pink Glass .....	2320
□	6. Light Pink Glass .....	2250
□	7. Pale Green Glass .....	6051
□	8. Leading .....	0020
□	9. Seam Stitch .....	0015

## 12605-27 Left Border

□	1. Basting & Dark Green Glass .....	6133
□	2. Medium Green Glass & Shading .....	5610
□	3. Bright Green Glass .....	5912
□	4. Pale Green Glass & Shading .....	6051
□	5. Blue Glass .....	4752
□	6. Dark Pink Glass .....	2320
□	7. Light Pink Glass .....	2250
□	8. Leading .....	0020
□	9. Seam Stitch .....	0015

## 12605-28 Right Border

□	1. Basting & Dark Green Glass .....	6133
□	2. Medium Green Glass & Shading .....	5610
□	3. Bright Green Glass .....	5912
□	4. Pale Green Glass & Shading .....	6051
□	5. Blue Glass .....	4752
□	6. Dark Pink Glass .....	2320
□	7. Light Pink Glass .....	2250
□	8. Leading .....	0020
□	9. Seam Stitch .....	0015

## Isacord Thread Colors Used in "Celestial Stained Glass Tiling Scene"

Collection #12605

0015 White	0520 Daffodil	1114 Clay	3761 Winter sky
0020 Black	0532 Champagne	1140 Meringue	3962 River mist
0108 Cobblestone	0643 Barewood	1252 Dark tan	3963 Hint of blue
0124 Fieldstone	0713 Lemon	1346 Cinnamon	4752 Vintage blue
0131 Smoke	0722 Khaki	1366 Mahogany	5610 Bright mint
0145 Skylight	0763 Dark rattan	1565 Espresso	5912 Erin green
0182 Saturn grey	0811 Candlelight	2250 Petal pink	6051 Jalapeno
0442 Tarnished gold	0904 Spanish gold	2320 Raspberry	6133 Capser



# Celestial Stained Glass Tiling Scene

## Instructions

This beautiful angel will look great in any room of your house. Stitched with loose fills over shimmery fabric, this tiling scene has an amazing stained glass effect. With a finished size of about 27" x 48" she will capture the attention of anyone that sees her.

### Diagram

12605-25	12605-26	12605-26	12605-26	12605-26	12605-25
12605-27	12605-01	12605-02	12605-03	12605-04	12605-27
12605-27	12605-05	12605-06	12605-07	12605-08	12605-28
12605-27	12605-09	12605-10	12605-11	12605-12	12605-28
12605-27	12605-13	12605-14	12605-15	12605-16	12605-28
12605-27	12605-17	12605-18	12605-19	12605-20	12605-28
12605-27	12605-21	12605-22	12605-23	12605-24	12605-28
12605-25	12605-26	12605-26	12605-26	12605-26	12605-25

### Supplies

- OESD embroidery collection Celestial Stained Glass Tiling Scene #12605
- Isacord embroidery thread
- Bobbin thread
- Temporary spray adhesive
- OESD Heavy Weight Tear Away stabilizer
- 5 yds. white fabric (embroidered blocks)
- 5 yds. white rainbow lamé fabric (white iridescent organza) (overlay embroidered blocks)
- 1 2/3 yds. dark brown fabric (backing and binding)
- 3/4 yd. OR 27" x 48" cotton batting
- Curved basting safety pins

### Cut

- (1) 27" x 48" dark brown fabric (backing)
- (5) 2" strips dark brown fabric (binding)

### Embroidery

- Embroider one of each design file 12605-01 through 12605-24 for the center of the wall hanging layering the rainbow lamé fabric over the white fabric using two layers of heavy weight tear away stabilizer in each hooping. Be sure to use temporary spray adhesive to adhere all layers of stabilizer and fabric together for best stitch results.
- Embroider border pieces layering rainbow lamé fabric over the white fabric: **Refer to Diagram**
  - 4 x corner 12605-25
  - 8 x top and bottom border 12605-26
  - 6 x left border 12605-27
  - 6 x right border 12605-28
- The last thing that will stitch in each of these designs is a border that is referred to on the thread chart as "Seam Stitch". This stitch is very important in the process of assembling the wall hanging. It is vital that it is not skipped when embroidering. Stitch this in a thread color that will blend with the background fabric.
- Once the embroidery process is complete, trim away excess fabric by cutting 1/4" away from the "Seam Stitch". This process is easily done using a rotary cutter and ruler.

**NOTE:** It may be easier to cut with the back of the block showing since the "Seam Stitch" was stitched in a thread color that blended in with the background fabric. Use a darker color in the bobbin when stitching the "Seam Stitch", so it contrasts with the stabilizer. **PHOTO 1**





### Construction of Blocks

- After each block has been trimmed, lay out the pieces near your machine so that it is easy to put the blocks together. **Refer to Diagram**
- Right sides together and pressing seams as you go, use a 1/4" seam allowance, or simply stitch directly on top of the seam stitch that stitched last during the embroidery process and stitch together the center forming rows.
- When the above step is complete you will have six stitched rows.

#### PHOTO 2

- Stitch the six rows together in the same manner to complete the center of the wallhanging. Make sure as you sew that your intersections line up between the rows. **PHOTO 3**
- Right sides together and pressing seams as you go, use a 1/4" seam allowance, or simply stitch directly on top of the seam stitch that stitched last during the embroidery process and stitch six left border pieces short end to short end for left long side. Stitching in the same manner, stitch six right border pieces short end to short end for right long side. Again stitching in the same manner, stitch two corner pieces and four top & bottom border pieces short end to short end forming top border row. Repeat for the remaining two corner pieces and four top & bottom pieces forming bottom border row. **PHOTO 3**

- Continuing in the same manner, stitch left border to left long side and right border to the right long side of the center. Stitch the top and bottom border rows to the top and bottom of the center. **PHOTOS 4 & 5**

- Layer a quilt sandwich, by placing back wrong side up, cotton batting, and the tiling scene right side up. Use curved safety pins or temporary spray adhesive to baste the layers together. **PHOTO 6**
- Quilt as desired. In our sample we simply stitched in the ditch.
- Square up the quilt, this is trimming the quilt until the sides are equal. This prepares the quilt for stitching on the binding. **PHOTO 7**

- Stitch on the binding as desired. For stitching on the binding the mitered corner technique was used. **PHOTO 8**

