

Note: Some designs in this collection may have been created using unique special stitches and/or techniques. To preserve design integrity when rescaling or rotating designs in your software, always rescale or rotate designs using the handles directly on-screen.



**12608-01 The Kitchen is the Heart of the Home Hanger FSA**  
5.02 X 8.43 in.  
127.51 X 214.12 mm  
16,634 St. ❄️ L



**12608-02 Mixer Appliqué**  
3.63 X 3.65 in.  
92.20 X 92.71 mm  
7,630 St. ❄️



**12608-03 Rise & Shine Hanger FSA**  
5.02 X 8.43 in.  
127.51 X 214.12 mm  
20,312 St. ❄️ L



**12608-04 Rooster Appliqué**  
3.58 X 4.16 in.  
90.93 X 105.66 mm  
12,978 St.



**12608-05 Let it Snow! Hanger FSA**  
5.02 X 8.43 in.  
127.51 X 214.12 mm  
19,683 St. ❄️ L



**12608-06 Bird Appliqué**  
4.16 X 4.11 in.  
105.66 X 104.39 mm  
10,879 St. ❄️



**12608-07 The Lord is my Shepherd Hanger FSA**  
5.02 X 8.43 in.  
127.51 X 214.12 mm  
19,397 St. ❄️ L



**12608-08 Sheep Appliqué**  
4.26 X 3.64 in.  
108.20 X 92.46 mm  
14,672 St.



**12608-09 Give Thanks with a Grateful Heart Hanger FSA**  
5.02 X 8.43 in.  
127.51 X 214.12 mm  
16,849 St. ❄️ L



**12608-10 Leaves Appliqué**  
3.62 X 4.79 in.  
91.95 X 121.67 mm  
13,765 St.



**12608-11 Trick or Treat Hanger FSA**  
5.02 X 8.43 in.  
127.51 X 214.12 mm  
17,868 St. ❄️ L



**12608-12 Bat Appliqué**  
4.79 X 3.32 in.  
121.67 X 84.33 mm  
10,545 St.

❄️ Design contains a loose fill.

❄️ Some solid areas shown are not stitched.

L Design is larger than 5" (127 mm) in either direction.

S Design is smaller than 1.5" (38.1 mm) in either direction.

It is a violation of Copyright law to make and distribute copies of electronic designs or artwork.

Electronic designs are licensed to the original purchaser for use at one location. ©2015 OESD, LLC. All rights reserved.

Note: Some designs in this collection may have been created using unique special stitches and/or techniques. To preserve design integrity when rescaling or rotating designs in your software, always rescale or rotate designs using the handles directly on-screen.



**12608-13 Oh Say Does That Star Spangled Banner Yet Wave Hanger FSA**  
 5.02 X 8.43 in.  
 127.51 X 214.12 mm  
 16,988 St. ✿ L



**12608-14 American Flag Appliqué**  
 4.38 X 3.51 in.  
 111.25 X 89.15 mm  
 12,198 St. ✿



**12608-15 Think Spring Hanger FSA**  
 5.02 X 8.43 in.  
 127.51 X 214.12 mm  
 18,631 St. ✿ L



**12608-16 Flowers Appliqué**  
 4.51 X 4.28 in.  
 114.55 X 108.71 mm  
 17,185 St. ✿

### Isacord Thread Colors Used in “In the Hoop Towel Hangers” Collection #12608

0015 White	0800 Goldenrod	2905 Iris blue
0020 Black	1055 Bark	3353 Light midnight
0105 Ash mist	1102 Pumpkin	3630 Sweet boy
0131 Smoke	1701 Red berry	3962 River mist
0142 Sterling	1704 Candy apple	4073 Metal
0150 Mystik grey	1800 Wildfire	4174 Charcoal
0465 Umber	1805 Strawberry	4220 Island green
0520 Daffodil	1902 Poinsettia	4410 Aqua velva
0622 Star gold	1906 Tulip	4423 Marine aqua
0630 Buttercup	2152 Heather pink	4430 Island waters
0651 Cornsilk	2241 Mauve	5633 Lime
0702 Papaya	2530 Rose	5912 Erin green
0713 Lemon	2776 Black chrome	6141 Spring green

FSA - Freestanding Appliqué

FSL - Freestanding Lace

✿ Design contains a loose fill.

✿ Some solid areas shown are not stitched.

L Design is larger than 5" (127 mm) in either direction.

S Design is smaller than 1.5" (38.1 mm) in either direction.

It is a violation of Copyright law to make and distribute copies of electronic designs or artwork.

Electronic designs are licensed to the original purchaser for use at one location. ©2015 OESD, LLC. All rights reserved.

Listings below indicate color sample, stitching order and suggested thread color number. Most numbers indicate Isacord thread. Colors beginning with 20501 refer to YLI Fine Metallics, 7 refer to Yenmet Metallic, 8 refer to YLI Variations Variegated Thread and 9 refer to Isacord Multicolor Variegated.

### 12608-01 The Kitchen is the Heart of the Home

<b>Hanger FSA</b>	
1. Hanger Placement Stitch	0015
2. Cut Line & Tackdown	0015
3. White Detail	0015
4. Blue Detail	4410
5. Heart	1800
6. Back Cut Line & Tackdown	4073
7. Cover Stitch *Match Bobbin	4073
8. Cover Stitch Detail *Match Bobbin	0015

### 12608-02 Mixer Appliqué

1. Mixer Placement Stitch	0150
2. Cut Line & Tackdown	0150
3. Bowl Placement Stitch	0150
4. Cut Line & Tackdown	0150
5. Mixer Attachment	0150
6. Bowl Detail	0131
7. Bowl Cover Stitch	4073
8. White Detail	0015
9. Mixer Cover Stitch	4410
10. Light Blue Detail	4220
11. Heart	1800

### 12608-03 Rise & Shine Hanger FSA

1. Hanger Placement Stitch	0520
2. Cut Line & Tackdown	0520
3. Light Yellow Detail	0520
4. Yellow Detail	0713
5. Dark Yellow Detail	0800
6. Light Red Detail	1701
7. Sun	0800
8. Red Detail	1704
9. Back Cut Line & Tackdown	1704
10. Cover Stitch *Match Bobbin	1704
11. Cover Stitch Detail *Match Bobbin	0800

### 12608-04 Rooster Appliqué

1. Green Fabric Placement Stitch	1704
2. Cut Line & Tackdown	1704
3. Red Fabric Placement Stitch	1704
4. Cut Line & Tackdown	1704
5. Yellow Fabric Placement Stitch	1704
6. Cut Line & Tackdown	1704
7. Comb & Waddle	1704
8. Green Cover Stitch & Detail	5912
9. Blue Cover Stitch & Detail	4423
10. Red Cover Stitch & Detail	1704
11. Orange Cover Stitch & Detail	1102
12. Gold Cover Stitch & Detail	0800
13. Legs & Wing Detail	1055
14. Green Body Cover Stitch	5912
15. Beak	0713
16. Eye	0020

### 12608-05 Let it Snow! Hanger FSA

1. Hanger Placement Stitch	1906
2. Cut Line & Tackdown	1906
3. Red Letters	1906
4. Blue Letters	3962
5. Green Letters	5633
6. White Detail	0015
7. Back Cut Line & Tackdown	0015
8. Cover Stitch *Match Bobbin	0015
9. Cover Stitch & Detail *Match Bobbin	0020

### 12608-06 Bird Appliqué

1. Bird Placement Stitch	1805
2. Cut Line & Tackdown	1805
3. Hat Placement Stitch	1805
4. Cut Line & Tackdown	1805
5. Belly	1805
6. Bird Cover Stitch	1055
7. Hat Cover Stitch & Detail	1906
8. Hat Detail	0015
9. Grey Hat Detail	0142
10. Wing Cover Stitch & Detail	1055
11. Cover Stitch Detail	0651
12. Beak	0800
13. Eye & Feet	4174
14. Snowflakes	4220

### 12608-07 The Lord is my Shepherd Hanger FSA

1. Hanger Placement Stitch	5633
2. Cut Line & Tackdown	5633
3. Dark Green Letters	5633
4. Pink Letters	2152
5. Letter Shading	2241
6. White Letters	0015
7. Back Cut Line & Tackdown	5912
8. Cover Stitch *Match Bobbin	5912
9. Cover Stitch Detail *Match Bobbin	0015

### 12608-08 Sheep Appliqué

1. Sheep Placement Stitch	0015
2. Cut Line & Tackdown	0015
3. White Ear	0015
4. Inner Ears	2152
5. Cover Stitch	0105
6. Grey Detail	4073
7. Grass	5633
8. Black Detail	0020
9. Cheeks	2152

### 12608-09 Give Thanks with a Grateful Heart

<b>Hanger FSA</b>	
1. Hanger Placement Stitch	1102
2. Cut Line & Tackdown	1102
3. Orange Letters	1102
4. Pink Heart & Shading	2152
5. White Detail	0015
6. Gold Letters	0702
7. Back Cut Line & Tackdown	1701
8. Cover Stitch *Match Bobbin	1701
9. Cover Stitch & Detail *Match Bobbin	0702

### 12608-10 Leaves Appliqué

1. Red Leaf Placement Stitch	1701
2. Cut Line & Tackdown	1701
3. Orange Leaf Placement Stitch	1701
4. Cut Line & Tackdown	1701
5. Red Cover Stitch	1701
6. Orange Detail	0800
7. Dark Orange Detail	1102
8. Red Detail	1902
9. Hearts	2152

### 12608-11 Trick or Treat Hanger FSA

1. Hanger Placement Stitch	0020
2. Cut Line & Tackdown	0020
3. Letters	0020
4. Letter Detail	2905
5. Back Cut Line & Tackdown	0020
6. Cover Stitch *Match Bobbin	0020
7. Cover Stitch Detail *Match Bobbin	2905

### 12608-12 Bat Appliqué

1. Wings Placement Stitch	0020
2. Cut Line & Tackdown	0020
3. Wing Cover Stitch	0020
4. Bat Body	2776
5. Face Detail	0020
6. Orange Detail	1102

### 12608-13 Oh Say Does That Star Spangled Banner

<b>Yet Wave Hanger FSA</b>	
1. Hanger Placement Stitch	0015
2. Cut Line & Tackdown	0015
3. White Banner & Letters	0015
4. Purple Letters	3353
5. Gold Letters	0622
6. Light Yellow Letters	0630
7. Light Blue Letters	3630
8. Back Cut Line & Tackdown	4073
9. Cover Stitch *Match Bobbin	4073
10. Cover Stitch Detail *Match Bobbin	0015

### 12608-14 American Flag Appliqué

1. White Fabric Placement Stitch	0015
2. Cut Line & Tackdown	0015
3. Blue Fabric Placement Stitch	0015
4. Cut Line & Tackdown	0015
5. Star Field	0015
6. Red Stripes	1800
7. Cover Stitch	4073
8. Cover Stitch Detail	0015
9. Pole	0622

### 12608-15 Think Spring Hanger FSA

1. Hanger Placement Stitch	4430
2. Cut Line & Tackdown	4430
3. Light Blue Letters	4430
4. Dark Blue Letters	4423
5. Flowers	2530
6. White Detail	0015
7. Leaves & Stems	5912
8. Back Cut Line & Tackdown	0465
9. Cover Stitch *Match Bobbin	0465
10. Cover Stitch Detail *Match Bobbin	5912

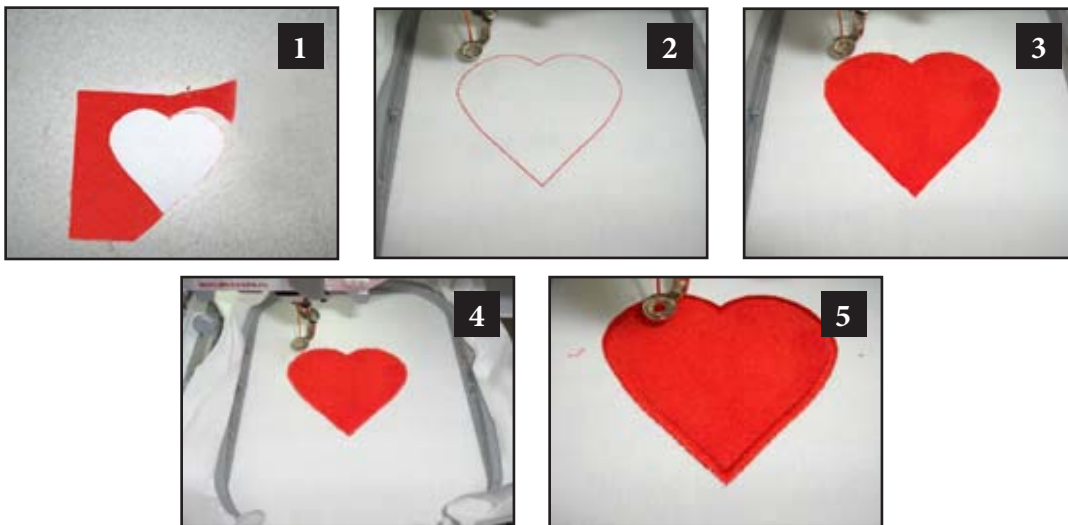
### 12608-16 Flowers Appliqué

1. Green Leaves Placement Stitch	6141
2. Cut Line & Tackdown	6141
3. Blue Fabric Placement Stitch	6141
4. Cut Line & Tackdown	6141
5. Orange Fabric Placement Stitch	6141
6. Cut Line & Tackdown	6141
7. Light Green Leaves & Stems	6141
8. Dark Green Leaves	5912
9. Light Blue Detail	4430
10. Dark Blue Detail	4423
11. Orange Detail	1102
12. Red Petals	1800
13. Pink Detail	2530
14. Yellow Detail	0713
15. White Detail	0015
16. Dark Green Sepal	5912

1. Print out the necessary pages from the PDF of the appliqué pattern(s).
2. Mark the right side of the pattern pieces so you'll know which direction to lay the pattern on the fabric.
3. Lightly spray the wrong side of the pattern pieces with temporary adhesive spray and allow it to set for a few minutes.
4. Place the pattern pieces on the right side of the fabric and carefully cut them out. **PHOTO 1**
5. Sew the placement stitch on your hooped fabric. **PHOTO 2**
6. With the paper still stuck to the right side of the appliqué fabric, spray the wrong side of the fabric with temporary spray adhesive.
7. Place the fabric inside the sewing placement stitch so that it matches the stitching line, and then remove the paper pattern. **PHOTO 3**
8. Sew the tackdown. **PHOTO 4**
9. Sew the remainder of the design and repeat for any remaining pieces. **PHOTO 5**

**NOTE:** The patterns are sized for the designs as they were made. If you resize the design, you will need to resize the pattern the same amount. You can print out the pattern at the normal size then copy it on a copy machine at the changed size. For example, resize the designs to 80%, resize the printed pattern to 80%.

**TIP:** When Printing the patterns, make sure that the “Fit to page” option is **UNCHECKED** in the Print Dialog Box. If this option is checked the printed patterns will not be actual size.



## Supplies Needed

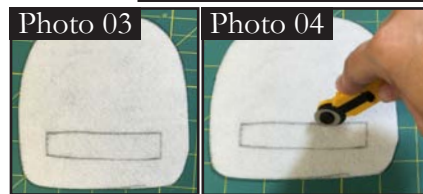
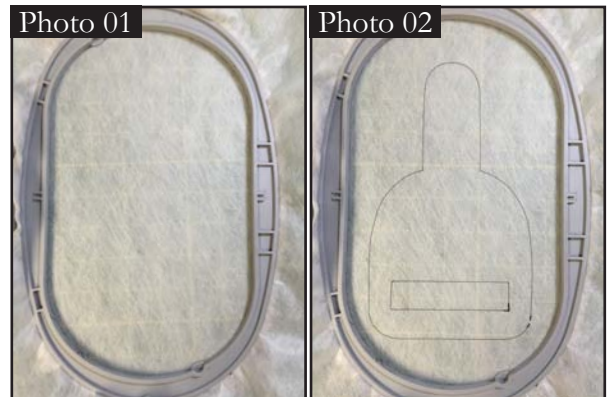
- In the Hoop Appliqué Scissors
- Embroidery Trimming Scissors
- Isacord thread
- 2 pieces fabric 8" x 10"
- OESD Bobbin thread
- OESD AquaMesh Wash Away stabilizer
- OESD StabilStick stabilizer
- Small (18mm) rotary cutter
- OESD FiberForm
- OESD Fuse & Fix
- FiberForm pattern (from this pdf)
- Temporary adhesive spray



## For Tea Towel:

- OESD StabilStick
- Plain Tea Towel
- Scrap fabrics for appliqué design

1. Hoop two layers of OESD Aqua Mesh stabilizer. **PHOTO 01**
2. Select the desired towel topper design. Stitch the design according to the color chart. Use white bobbin thread unless noted with \*Match Bobbin.
3. When \*Match Bobbin is indicated by thread chart, wind a bobbin with the same thread color as used in the needle.
4. When indicated by the thread chart, stitch the placement stitch. **PHOTO 02**
5. Using a the pattern included in this .pdf, cut 1 hanger from FiberForm. Trace the pattern onto the FiberForm, then cut around the outer edge of the pattern with scissors. **PHOTO 03**
6. Use an 18mm rotary cutter to cut the towel opening. **PHOTOS 04 & 05**
7. Lightly spray the back of the FiberForm with temporary adhesive spray. Place the FiberForm onto the stabilizer, aligning it with the placement stitch. **PHOTO 06**
8. Lightly spray the wrong side of one piece of the fabric with temporary adhesive spray. Center over the placement stitch and on top of the fiber form. Smooth into place. **PHOTO 07**
9. Stitch the next color change, which will be a cut line. **PHOTO 08**
10. Using a pair of in the hoop appliqué scissors, trim as close as possible to the cut line. (Note that the cut line is a double line of stitching. The second line will secure the fabric, so it is safe to cut very close to the outermost line). Be sure to cut away the



fabric from within the towel opening. **PHOTO 09**

- Continue to stitch the design according to the thread chart. **PHOTO 10**

**PHOTO 10**

- When indicated by the thread chart, wind a bobbin with the same color as the top thread to stitch the cover stitch. This will give a finished outer edge to the towel hanger. Before stitching this color change, remove the hoop from the machine and flip over to the backside of the project. **PHOTO 11**

**PHOTO 11**

- Lightly spray the wrong side of the other piece of fabric with temporary adhesive spray. Smooth onto the back of the project, covering the embroidered area. **PHOTO 12**

**PHOTO 12**

- Stitch the next color change. This will stitch another cut line. **PHOTO 13**

**PHOTO 13**

- Using a pair of in the hoop appliqué scissors, trim as close as possible to the cut line. (Note that the cut line is a double line of stitching. The second line will secure the fabric, so it is safe to cut very close to the outermost line). Be sure to cut away the fabric from within the towel opening. **PHOTO 14**

**PHOTO 14**

- Replace the hoop on the machine and stitch the next color change, which will be the cover stitch and buttonhole. Stitch any remaining details according to the thread chart. **PHOTO 15**

**PHOTO 15**

- Remove the project from the hoop. Trim away most of the excess water-soluble stabilizer. **PHOTO 16**

**PHOTO 16**

- Rinse away the remaining water-soluble stabilizer and allow the project to dry.

- Use a buttonhole cutter or sharp pair of scissors to open the buttonhole in the hanger tab. **PHOTO 17**

**PHOTO 17**

- Fold down towel hanger tab and mark placement for button. **PHOTO 18**

**PHOTO 18**

- Stitch button to backside of towel, matching the thread for the button with the front side of the towel hanger. **PHOTO 19**

**PHOTO 19**

- Select the coordinating appliqué design.

- Mark the vertical center of the towel and approximately five inches up from the hem of the towel. **PHOTO 20**

**PHOTO 20**

- Hoop a piece of OESD Stabil Stick stabilizer. Score the paper backing to expose the adhesive. Mark the center of the hoop onto the stabilizer. **PHOTO 21**

**PHOTO 21**

- Center the marked center on the towel with the center of the hoop and smooth the towel onto the stabilizer. **PHOTO 22**

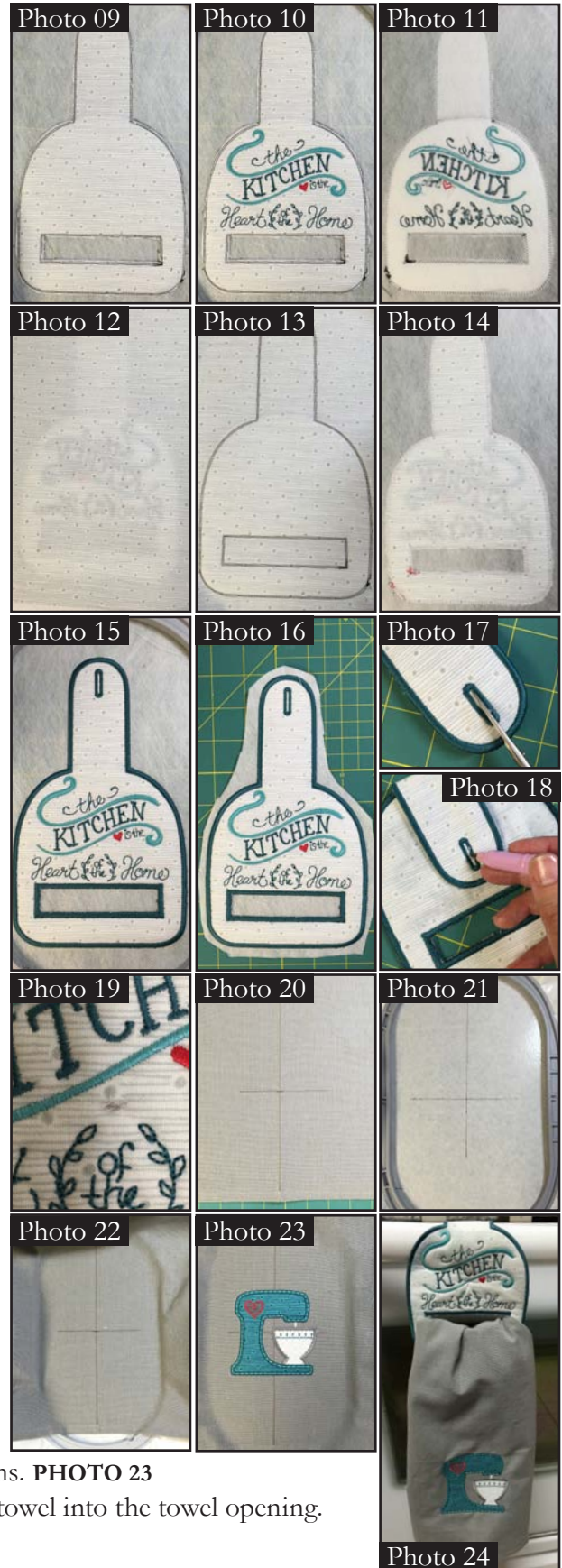
**PHOTO 22**

- Stitch the coordinating appliqué design onto the tea towel following the thread chart and the general appliqué instructions. **PHOTO 23**

**PHOTO 23**

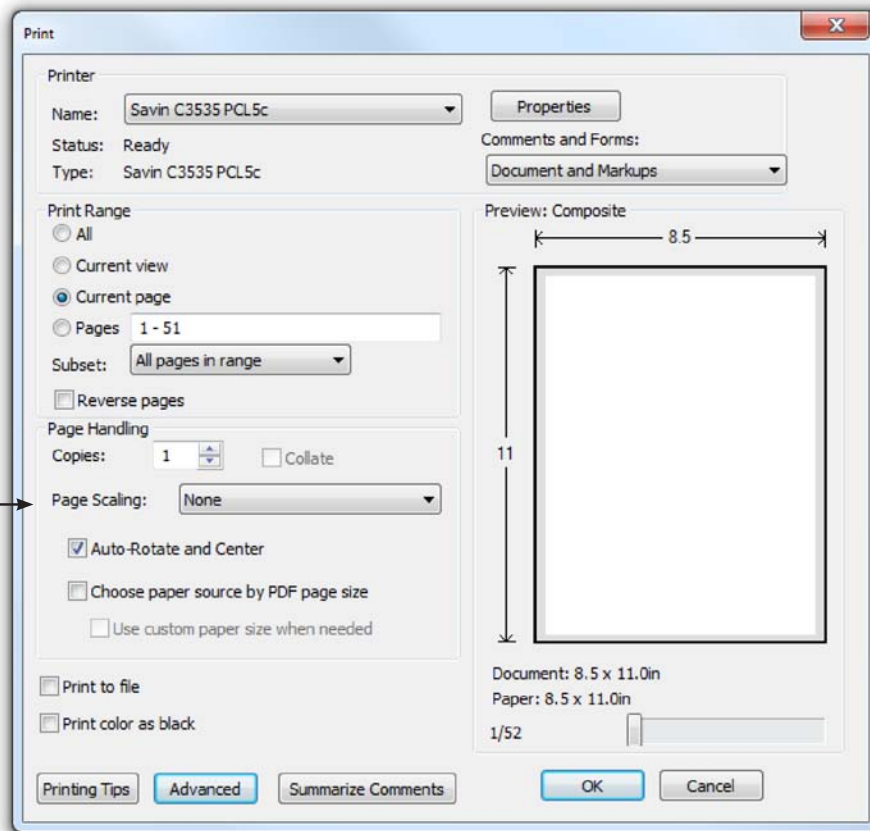
- Hang the towel by folding the towel into thirds, then tucking towel into the towel opening. Button the hanger over a bar to display. **PHOTO 24**

**PHOTO 24**



## ATTENTION

When printing this document, any page scaling or page fitting options in your print dialog box must be turned OFF or set to NONE so that your files will print out at their actual size. Images not printed at actual size will not function as intended.



## TO SAVE PAPER

Only print the desired image by navigating to the image's page, go to File > Print and select "Current page" in the print dialog box. Repeat for each desired image.

