

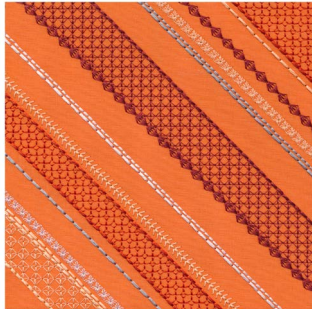


Modern Expressions Tiling Scene

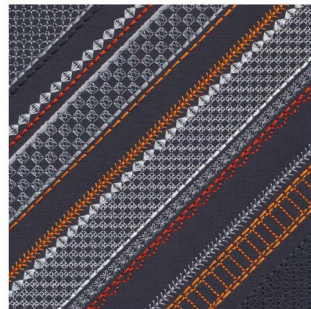
#12636 / 16 Designs



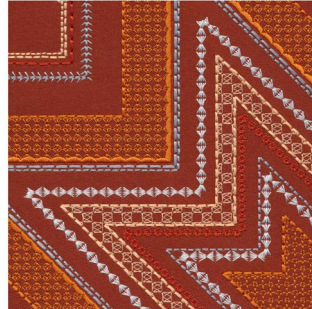
Note: Some designs in this collection may have been created using unique special stitches and/or techniques. To preserve design integrity when rescaling or rotating designs in your software, always rescale or rotate designs using the handles directly on-screen.



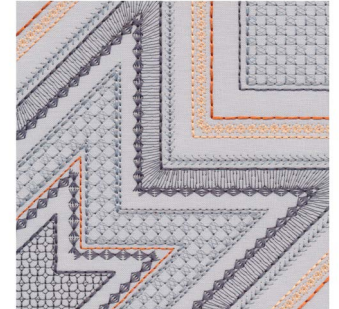
12636-01 Square 1
5.49 X 5.58 in.
139.45 X 141.73 mm
10,986 St.



12636-02 Square 2
5.51 X 5.48 in.
139.95 X 139.19 mm
12,691 St.



12636-03 Square 3
5.36 X 5.39 in.
136.14 X 136.91 mm
13,476 St.



12636-04 Square 4
5.41 X 5.40 in.
137.41 X 137.16 mm
11,522 St.



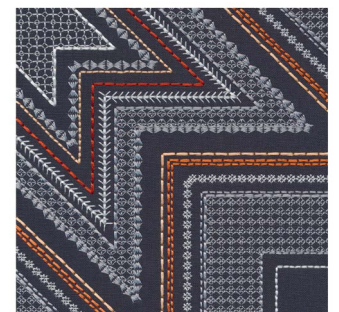
12636-05 Square 5
5.46 X 5.42 in.
138.68 X 137.67 mm
14,530 St.



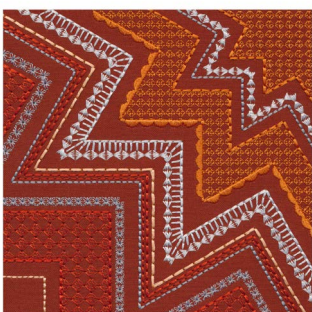
12636-06 Square 6
5.44 X 5.45 in.
138.18 X 138.43 mm
13,267 St.



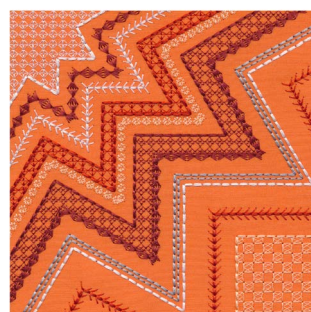
12636-07 Square 7
5.40 X 5.40 in.
137.16 X 137.16 mm
12,372 St.



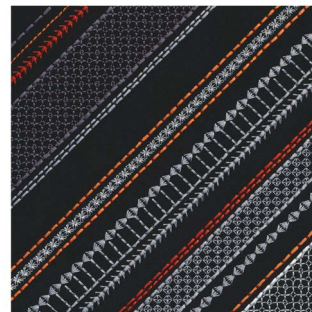
12636-08 Square 8
5.40 X 5.40 in.
137.16 X 137.16 mm
12,851 St.



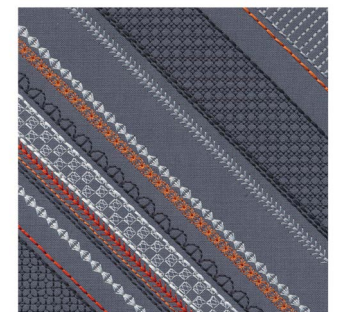
12636-09 Square 9
5.45 X 5.42 in.
138.43 X 137.67 mm
13,311 St.



12636-10 Square 10
5.50 X 5.51 in.
139.70 X 139.95 mm
13,375 St.



12636-11 Square 11
5.44 X 5.45 in.
138.43 X 137.92 mm
10,429 St.

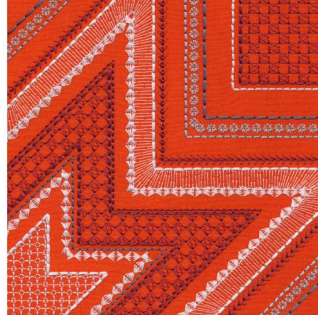


12636-12 Square 12
5.43 X 5.49 in.
137.92 X 139.45 mm
10,425 St.

Note: Some designs in this collection may have been created using unique special stitches and/or techniques. To preserve design integrity when rescaling or rotating designs in your software, always rescale or rotate designs using the handles directly on-screen.



12636-13 Square 13
5.36 X 5.39 in.
136.14 X 136.91 mm
13,476 St.



12636-14 Square 14
5.41 X 5.40 in.
137.41 X 137.16 mm
11,522 St.



12636-15 Square 15
5.49 X 5.58 in.
141.73 X 139.45 mm
10,977 St.



12636-16 Square 16
5.51 X 5.48 in.
139.95 X 139.19 mm
12,691 St.



Modern Expressions Tiling Scene

#12636 / 16 Designs

Listings below indicate color sample, stitching order and suggested thread color number. Most numbers indicate Isacord thread. Colors beginning with 20501 refer to YLI Fine Metallics, 7 refer to Yenmet Metallic, 8 refer to YLI Variations Variegated Thread and 9 refer to Isacord Multicolor Variegated.

12636-01 Square 1

■ 1. Dark Rust Detail.....	1335
■ 2. Red Brown Detail.....	1526
■ 3. Tan Detail.....	1362
■ 4. Grey Detail.....	0131
□ 5. White Detail.....	0015
■ 6. Seam Stitch.....	0020

12636-02 Square 2

□ 1. White Detail.....	0015
■ 2. Grey Detail.....	0131
■ 3. Dark Rust Detail.....	1335
■ 4. Orange Detail.....	1114
■ 5. Charcoal Detail.....	4174
■ 6. Seam Stitch.....	0020

12636-03 Square 3

■ 1. Grey Detail.....	0131
■ 2. Orange Detail.....	1114
■ 3. Dark Rust Detail.....	1335
■ 4. Tan Detail.....	1362
□ 5. White Detail.....	0015
■ 6. Seam Stitch.....	0020

12636-04 Square 4

■ 1. Grey Detail.....	0131
■ 2. Tan Detail.....	1362
■ 3. Orange Detail.....	1114
■ 4. Dark Grey Detail.....	0138
■ 5. Seam Stitch.....	0020

12636-05 Square 5

■ 1. Grey Detail.....	0131
■ 2. Dark Grey Detail.....	0138
■ 3. Orange Detail.....	1114
■ 4. Charcoal Detail.....	4174
□ 5. White Detail.....	0015
■ 6. Seam Stitch.....	0020

12636-06 Square 6

■ 1. Dark Grey Detail.....	0138
■ 2. Charcoal Detail.....	4174
■ 3. Grey Detail.....	0131
■ 4. Tan Detail.....	1362
■ 5. Orange Detail.....	1114
■ 6. Seam Stitch.....	0020

12636-07 Square 7

■ 1. Red Brown Detail.....	1526
□ 2. White Detail.....	0015
■ 3. Tan Detail.....	1362
■ 4. Grey Detail.....	0131
■ 5. Seam Stitch.....	0020

12636-08 Square 8

□ 1. White Detail.....	0015
■ 2. Tan Detail.....	1362
■ 3. Grey Detail.....	0131
■ 4. Orange Detail.....	1114
■ 5. Dark Rust Detail.....	1335
■ 6. Seam Stitch.....	0020

12636-09 Square 9

■ 1. Grey Detail.....	0131
■ 2. Tan Detail.....	1362
■ 3. Orange Detail.....	1114
■ 4. Dark Rust Detail.....	1335
□ 5. White Detail.....	0015
■ 6. Seam Stitch.....	0020

12636-10 Square 10

■ 1. Tan Detail.....	1362
■ 2. Red Brown Detail.....	1526
□ 3. White Detail.....	0015
■ 4. Dark Rust Detail.....	1335
■ 5. Grey Detail.....	0131
■ 6. Seam Stitch.....	0020

12636-11 Square 11

□ 1. White Detail.....	0015
■ 2. Orange Detail.....	1114
■ 3. Dark Rust Detail.....	1335
■ 4. Dark Grey Detail.....	0138
■ 5. Grey Detail.....	0131
■ 6. Seam Stitch.....	0020

12636-12 Square 12

■ 1. Charcoal Detail.....	4174
■ 2. Dark Rust.....	1335
■ 3. Orange Detail.....	1114
■ 4. Grey Detail.....	0131
□ 5. White Detail.....	0015
■ 6. Seam Stitch.....	0020

12636-13 Square 13

■ 1. Tan Detail.....	1362
□ 2. White Detail.....	0015
■ 3. Orange Detail.....	1114
■ 4. Charcoal Detail.....	4174
■ 5. Grey Detail.....	0131
■ 6. Seam Stitch.....	0020

12636-14 Square 14

■ 1. Red Brown Detail.....	1526
■ 2. Grey Detail.....	0131
■ 3. Dark Grey Detail.....	0138
□ 4. White Detail.....	0015
■ 5. Seam Stitch.....	0020

12636-15 Square 15

■ 1. Dark Grey Detail.....	0138
■ 2. Charcoal Detail.....	4174
■ 3. Grey Detail.....	0131
■ 4. Orange Detail.....	1114
■ 5. Tan Detail.....	1362
■ 6. Seam Stitch.....	0020

12636-16 Square 16

■ 1. Red Brown Detail.....	1526
□ 2. White Detail.....	0015
■ 3. Grey Detail.....	0131
■ 4. Dark Grey Detail.....	1335
■ 5. Tan Detail.....	1362
■ 6. Seam Stitch.....	0020

Isacord Thread Colors Used in "Modern Expressions Tiling Scene" Collection #12636

0015 White	0150 Mystik Grey	1362 Shrimp
0020 Black	1114 Clay	1526 Apple Butter
0131 Smoke	1335 Dark Rust	4174 Charcoal
0138 Heavy Storm		

This contemporary tiling scene allows for mix-and-match possibilities, so you can easily create a 4 x 4 wallhanging following the steps below, or modify it using the same basic instructions to create a variety of shapes. Other possible projects are table runners, throw pillows, or even use single blocks as coasters. Our project is just the start. Just think of this as a collection of square building blocks and you will be pleasantly surprised at its potential.

Supplies

- OESD embroidery collection Modern Expressions Tiling Scene #12636
- OESD Ultra Clean and Tear stabilizer
- Block fabrics:
 - Cut each block to 10" x 14" or large enough for your embroidery hoop.
 - 1 fat quarter each:
 - Black fabric
 - Medium gray fabric
 - Light gray fabric
 - Medium orange fabric
 - Dark orange fabric
 - ½ yard each:
 - Charcoal fabric
 - Light orange fabric
- ⅔ yd. fabric (backing) (sample used medium gray color)
- ¼ yd. fabric (binding) (sample uses dark charcoal color)
- ⅔ yd. or 22" square cotton batting
- Isacord embroidery threads
- Temporary spray adhesive
- Thread for piecing



Cut

- (32) 10" x 14" (or large enough to hoop) OESD Ultra Clean and Tear stabilizer
- (1) 22" x 22" fabric (backing)
- (3) 2 ¼" strips fabric (binding)
- (16) Block fabrics. Cut each block to 10" x 14" or large enough for your embroidery hoop.
 - Light gray fabric - 3 blocks
 - Medium gray fabric - 2 blocks
 - Charcoal fabric - 3 blocks
 - Black fabric - 1 block
 - Light orange fabric - 3 blocks
 - Medium orange fabric - 2 blocks
 - Dark orange fabric - 2 blocks

Embroidery

- Embroider one of each design file 12636-01 through 12636-16 on the different colors of fabric, using two layers of OESD Ultra Clean and Tear stabilizer. Using temporary spray adhesive, spray between two 10" x 14" pieces of tear away stabilizer and adhere to each other and to the wrong side of a colored piece fabric (embroidered tiles). Hoop the pieces together. Embroider the design. Remove the fabric from the hoop. Repeat for the remaining colors of fabric and design files. Sample uses the following:

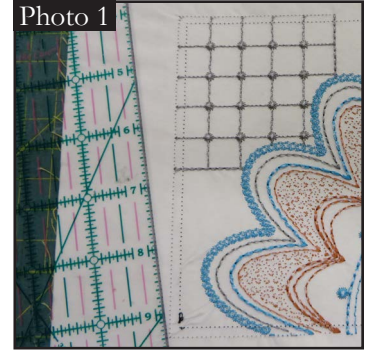
- Light Orange Fabric - 3 Blocks
 - 12636-01
 - 12636-10
 - 12636-16
- Charcoal Fabric - 3 Blocks
 - 12636-02
 - 12636-08
 - 12636-13
- Dark Orange Fabric - 2 Blocks
 - 12636-03
 - 12636-09
- Light Gray Fabric - 3 Blocks
 - 12636-04
 - 12636-06
 - 12636-15
- Medium Gray Fabric - 2 Blocks
 - 12636-05
 - 12636-12
- Medium Orange Fabric - 2 Blocks
 - 12636-07
 - 12636-14
- Black Fabric - 1 Block
 - 12636-11

- The last thing that will stitch in each of these designs is a border that is referred to on the thread chart as “Seam Stitch”. This stitch is very important in the process of assembling the wall hanging. It is vital that it is not skipped when embroidering. Stitch this in a thread color that will blend with the background fabric.
- Once the embroidery process is complete, trim away excess fabric by cutting 1/4" away from the “Seam Stitch”. This process is easily done using a rotary cutter and ruler.

PHOTO 1

NOTE: It may be easier to cut with the back of the tile showing since the “Seam Stitch” was stitched in a thread color that blended in with the background fabrics

- **TIP:** Switch to a black bobbin thread for the last color change of each stitch to make it easier to see from the backside of the block.



Construction of Blocks

- Before you begin:
 - With traditional quilt piecing, seams are pressed to one side. With this project we recommend all seams be pressed **OPEN**. This will help the project to lie more flat. Because all blocks have embroidery stabilizer, the seams will not show through even the lighter colors.
 - We recommend leaving the stabilizer **IN** the project. This way all blocks will have the same thickness and texture throughout. Ultra Clean and tear is a soft Tear Away stabilizer that will become even softer with washing, so it won't leave your project feeling stiff and bulky.
 - You may choose to remove the stabilizer from the seam allowances to help you press the seams open more easily.

12636-01	12636-02	12636-03	12636-04
12636-05	12636-06	12636-07	12636-08
12636-09	12636-10	12636-11	12636-12
12636-13	12636-14	12636-15	12636-16

Diagram

- After each block has been trimmed, lay out the pieces near your machine so that it is easy to put the blocks together. Refer to **Diagram**
- Right sides together and using a 1/4" seam allowance, stitch block 12636-01 to block 12636-02. Refer to the diagram for block orientation. Use the seam stitch to guide you as you stitch the blocks together. **PHOTO 2**
- Complete the first row by adding block 12636-03 and 12636-04.
- Form rows 2-4 in the same manner. Designs numbers go from left to right, top to bottom.
- Stitch the four rows together in the same manner to complete the front of the wall hanging. Make sure as you sew that your intersections line up between the rows. Cut backing fabric and batting to be at least 1"- 2" larger than the finished size of your project.
- Layer a quilt sandwich, by placing back wrong side up, cotton batting, and the tiling scene right side up. Use temporary spray adhesive to baste the layers together.
- Quilt as desired. In our sample we simply stitched in the ditch.
- Square up the quilt, this is trimming the quilt until the sides are equal. This prepares the quilt for stitching on the binding.
- Bind as desired.

