

Note: Some designs in this collection may have been created using unique special stitches and/or techniques. To preserve design integrity when rescaling or rotating designs in your software, always rescale or rotate designs using the handles directly on-screen.



12640-01 Wild Roses Appliqué
4.73 X 6.09 in.
120.14 X 154.69 mm
22,967 St.



12640-02 Wild Roses & Floret Appliqué
4.10 X 6.09 in.
104.14 X 154.69 mm
17,881 St.



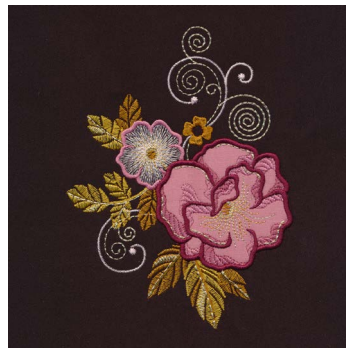
12640-03 Wild Rose 1 Appliqué
4.19 X 4.75 in.
106.43 X 120.65 mm
14,404 St.



12640-04 Wild Rose 2 Appliqué
5.16 X 3.48 in.
131.06 X 88.39 mm
14,456 St.



12640-05 Wild Rose 3 Appliqué
3.31 X 3.08 in.
84.07 X 78.23 mm
8,292 St.



12640-06 Wild Rose, Floret & Swirls Appliqué
4.50 X 6.03 in.
114.30 X 153.16 mm
15,182 St.



12640-07 Florets on the Vine 1
3.68 X 6.13 in.
93.47 X 155.70 mm
11,207 St.



12640-08 Florets on the Vine 2
4.86 X 4.39 in.
123.44 X 111.51 mm
9,728 St.



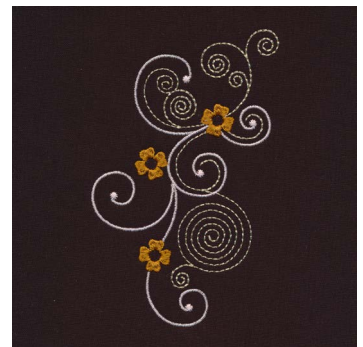
12640-09 Florets on the Vine 3
4.03 X 3.44 in.
102.36 X 87.38 mm
5,904 St.



12640-10 Floret
1.55 X 2.09 in.
39.37 X 53.09 mm
2,994 St.

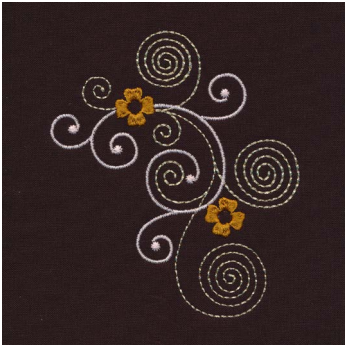


12640-11 Swirling Medallion
4.70 X 4.70 in.
119.38 X 119.38 mm
8,728 St.



12640-12 Swirling Florets 1
3.40 X 5.44 in.
86.36 X 138.18 mm
4,735 St.

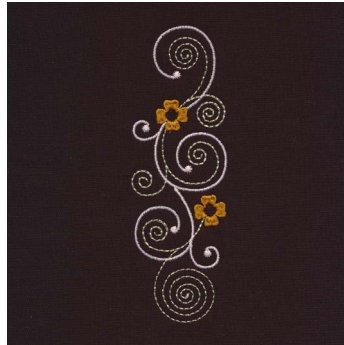
Note: Some designs in this collection may have been created using unique special stitches and/or techniques. To preserve design integrity when rescaling or rotating designs in your software, always rescale or rotate designs using the handles directly on-screen.



12640-13 Swirling Florets 2
 3.72 X 4.30 in.
 94.49 X 109.22 mm
 3,803 St.



12640-14 Swirling Florets 3
 2.00 X 2.88 in.
 50.80 X 73.15 mm
 1,769 St.



12640-15 Swirling Florets Border
 1.74 X 5.43 in.
 44.20 X 137.92 mm
 3,563 St.



Wild & Luminous Appliqués

#12640 / 15 Designs

Listings below indicate color sample, stitching order and suggested thread color number. Most numbers indicate Isacord thread. Colors beginning with 20501 refer to YLI Fine Metallics, 7 refer to Yenmet Metallic, 8 refer to YLI Variations Variegated Thread and 9 refer to Isacord Multicolor Variegated.

12640-01 Wild Roses Appliqué

1. Dark Gold Leaves	0941
2. Light Gold Leaves	0721
3. Dark Gold Stems	0941
4. Brown Stems	0747
5. Leaves & Stems Metallic Detail	7011
6. Flowers Placement Stitch	2153
7. Cut Line & Tackdown	2153
8. Light Pink Flower Shading	2153
9. Medium Pink Flower Shading	2241
10. Cover Stitch	2224
11. Stamen	0941
12. Dark Gold Metallic Detail	7014
13. Light Gold Metallic Detail	7011

12640-02 Wild Roses & Floret Appliqué

1. Dark Gold Leaves	0941
2. Light Gold Leaves	0721
3. Brown Stems	0747
4. Dark Gold Stems	0941
5. Pale Pink Flower	2170
6. Leaves & Stems Metallic Detail	7011
7. Flowers Placement Stitch	2153
8. Cut Line & Tackdown	2153
9. Light Pink Flower Detail	2153
10. Medium Pink Flowers Shading	2241
11. Cover Stitch	2224
12. Stamens	0941
13. Dark Gold Metallic Detail	7014
14. Light Gold Metallic Detail	7011

12640-03 Wild Rose 1 Appliqué

1. Dark Gold Leaves	0941
2. Light Gold Leaves	0721
3. Dark Gold Stems	0941
4. Brown Stems	0747
5. Leaves & Stems Metallic Detail	7011
6. Flowers Placement Stitch	2153
7. Cut Line & Tackdown	2153
8. Light Pink Flower Shading	2153
9. Medium Pink Flower Shading	2241
10. Cover Stitch	2224
11. Stamen	0941
12. Dark Gold Metallic Detail	7014
13. Light Gold Metallic Detail	7011

12640-04 Wild Rose 2 Appliqué

1. Dark Gold Leaves	0941
2. Light Gold Leaves	0721
3. Brown Stems	0747
4. Dark Gold Stems	0941
5. Leaves & Stems Metallic Detail	7011
6. Flower Placement Stitch	2153
7. Cut Line & Tackdown	2153
8. Light Pink Flower Shading	2153
9. Medium Pink Flower Shading	2241
10. Stamen	0941
11. Dark Gold Metallic Detail	7014
12. Light Gold Metallic Detail	7011
13. Cover Stitch	2224

12640-05 Wild Rose 3 Appliqué

1. Dark Gold Leaves	0941
2. Light Gold Leaves	0721
3. Brown Stems	0747
4. Dark Gold Stems	0941
5. Leaves & Stems Metallic Detail	7011
6. Flower Placement Stitch	2153
7. Cut Line & Tackdown	2153
8. Light Pink Flower Shading	2153
9. Medium Pink Flower Shading	2241
10. Cover Stitch	2224
11. Stamen	0941
12. Dark Gold Metallic Detail	7014
13. Light Gold Metallic Detail	7011

12640-06 Wild Rose, Floret & Swirls Appliqué

1. Background Gold Metallic Swirls	7011
2. Background Pale Pink Swirls	2170
3. Dark Gold Leaves	0941
4. Light Gold Leaves & Stem	0721
5. Dark Gold Stem	0941
6. Brown Stems	0747
7. Leaves & Stems Metallic Detail	7011
8. Pale Pink Flower	2170
9. Flower Placement Stitch	2153
10. Cut Line & Tackdown	2153
11. Light Pink Flower Shading	2153
12. Medium Pink Flower Shading	2241
13. Stamens	0941
14. Dark Gold Metallic Detail	7014
15. Cover Stitch	2224
16. Light Gold Metallic Detail	7011

12640-07 Florets on the Vine 1

1. Dark Gold Leaves	0941
2. Light Gold Leaves	0721
3. Leaves & Stems Metallic Detail	7011
4. Pale Pink Flowers	2170
5. Medium Pink Outlines	2153
6. Stamens	0941
7. Dark Gold Metallic Detail	7014
8. Light Gold Metallic Detail	7011

12640-08 Florets on the Vine 2

1. Dark Gold Leaves	0941
2. Light Gold Leaves	0721
3. Leaves & Stems Metallic Detail	7011
4. Pale Pink Flowers	2170
5. Medium Pink Outlines	2153
6. Stamens	0941
7. Dark Gold Metallic Detail	7014
8. Light Gold Metallic Detail	7011

12640-09 Florets on the Vine 3

1. Dark Gold Leaves	0941
2. Light Gold Leaves	0721
3. Leaves & Stems Metallic Detail	7011
4. Pale Pink Flowers	2170
5. Medium Pink Outlines	2153
6. Stamen	0941
7. Dark Gold Metallic Detail	7014
8. Light Gold Metallic Detail	7011

12640-10 Floret

1. Dark Gold Leaves	0941
2. Light Gold Leaves	0721
3. Leaf Metallic Detail	7011
4. Pale Pink Flower	2170
5. Medium Pink Outlines	2153
6. Stamen	0941
7. Dark Gold Metallic Detail	7014
8. Light Gold Metallic Detail	7011

12640-11 Swirling Medallion

1. Dark Gold Flower	0941
2. Gold Metallic Detail	7011
3. Pale Pink Detail	2170

12640-12 Swirling Florets 1

1. Gold Metallic Detail	7011
2. Pale Pink Detail	2170
3. Dark Gold Flowers	0941

12640-13 Swirling Florets 2

1. Gold Metallic Detail	7011
2. Pale Pink Detail	2170
3. Dark Gold Flowers	0941

12640-14 Swirling Florets 3

1. Gold Metallic Detail	7011
2. Pale Pink Detail	2170
3. Dark Gold Flowers	0941

12640-15 Swirling Florets Border

1. Gold Metallic Detail	7011
2. Pale Pink Detail	2170
3. Dark Gold Flowers	0941

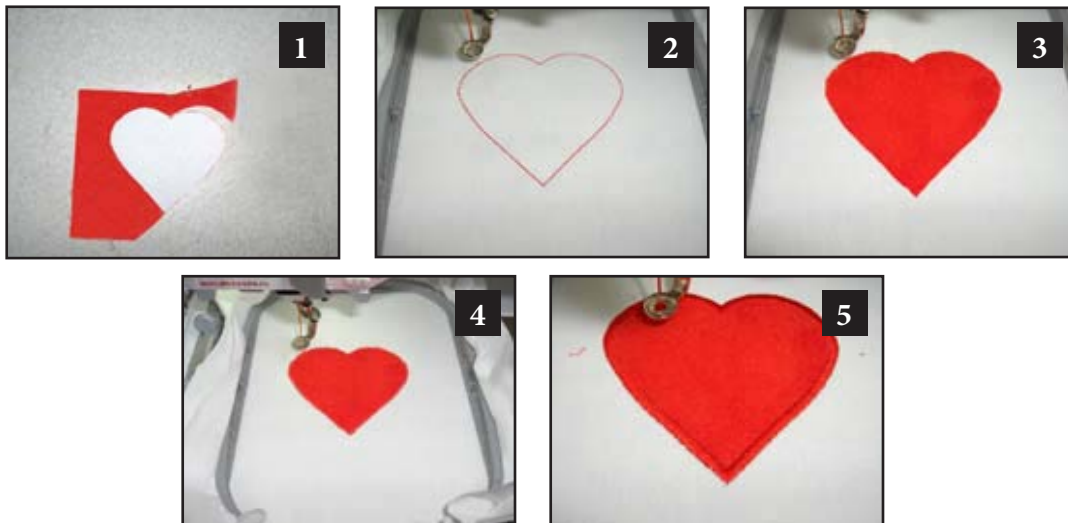
Isacord / Yenmet Metallic Thread Colors Used in "Wild & Luminous Appliqués" Collection #12640

0721 Antique	2153 Dusty Mauve	2241 Mauve
0747 Golden Brown	2170 Chiffon	7011 (S7) Fools Gold
0941 Golden Grain	2224 Claret	7014 (S15) Aztec Gold

1. Print out the necessary pages from the PDF of the appliqué pattern(s).
2. Mark the right side of the pattern pieces so you'll know which direction to lay the pattern on the fabric.
3. Lightly spray the wrong side of the pattern pieces with temporary adhesive spray and allow it to set for a few minutes.
4. Place the pattern pieces on the right side of the fabric and carefully cut them out. **PHOTO 1**
5. Sew the placement stitch on your hooped fabric. **PHOTO 2**
6. With the paper still stuck to the right side of the appliqué fabric, spray the wrong side of the fabric with temporary spray adhesive.
7. Place the fabric inside the sewing placement stitch so that it matches the stitching line, and then remove the paper pattern. **PHOTO 3**
8. Sew the tackdown. **PHOTO 4**
9. Sew the remainder of the design and repeat for any remaining pieces. **PHOTO 5**

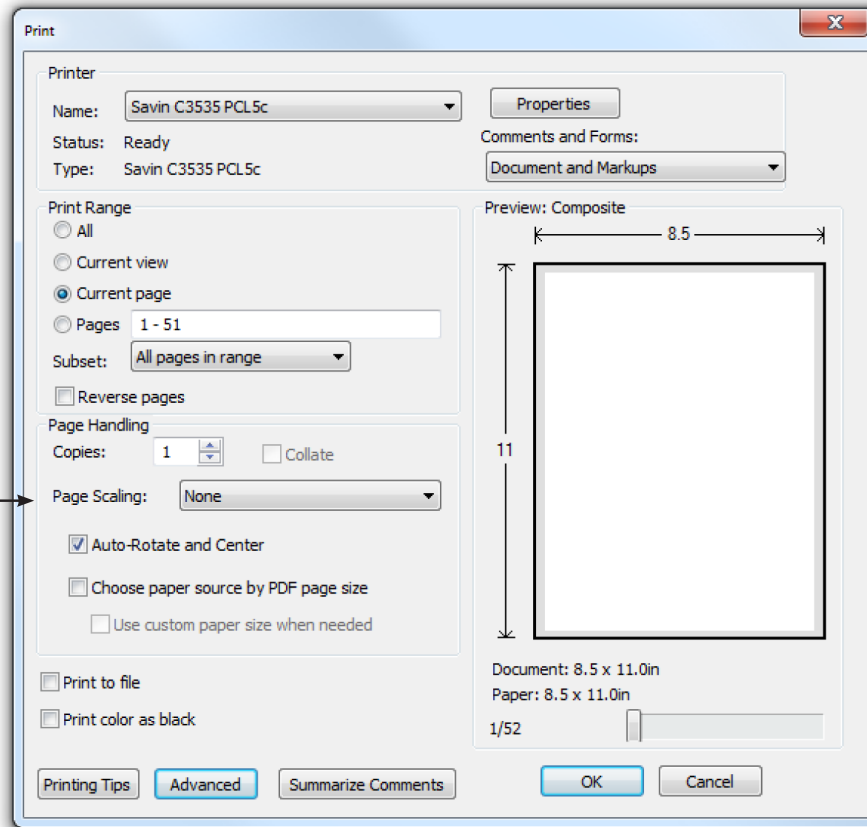
NOTE: The patterns are sized for the designs as they were made. If you resize the design, you will need to resize the pattern the same amount. You can print out the pattern at the normal size then copy it on a copy machine at the changed size. For example, resize the designs to 80%, resize the printed pattern to 80%.

TIP: When Printing the patterns, make sure that the “Fit to page” option is UNCHECKED in the Print Dialog Box. If this option is checked the printed patterns will not be actual size.



ATTENTION

When printing this document, any page scaling or page fitting options in your print dialog box must be turned OFF or set to NONE so that your files will print out at their actual size. Images not printed at actual size will not function as intended.



TO SAVE PAPER

Only print the desired image by navigating to the image's page, go to File > Print and select "Current page" in the print dialog box. Repeat for each desired image.

