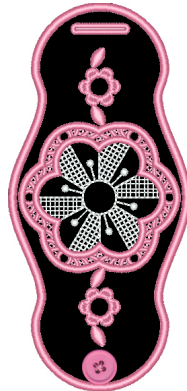


Note: Some designs in this collection may have been created using unique special stitches and/or techniques. To preserve design integrity when rescaling or rotating designs in your software, always rescale or rotate designs using the handles directly on-screen.



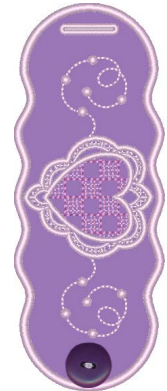
12648-01 Flower Napkin Corner FSA
4.74 X 4.33 in.
120.40 X 109.98 mm
15,898 St.



12648-02 Flower Napkin Ring FSA
2.83 X 6.01 in.
71.88 X 152.65 mm
13,189 St.



12648-03 Heart Napkin Corner FSA
4.74 X 4.90 in.
120.40 X 124.46 mm
15,410 St.



12648-04 Heart Napkin Ring FSA
2.33 X 6.01 in.
59.18 X 152.65 mm
10,598 St.



12648-05 Leaf Napkin Corner FSA
4.74 X 4.94 in.
120.40 X 125.48 mm
13,648 St.



12648-06 Leaf Napkin Ring FSA
2.51 X 6.05 in.
63.75 X 153.67 mm
10,846 St.



12648-07 Snowflake Napkin Corner FSA
4.74 X 4.96 in.
120.40 X 125.98 mm
16,519 St.



12648-08 Snowflake Napkin Ring FSA
2.56 X 6.14 in.
65.02 X 155.96 mm
10,495 St.



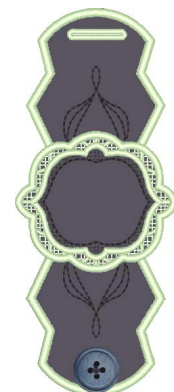
12648-09 Square Napkin Corner FSA
4.74 X 5.22 in.
120.40 X 132.59 mm
13,775 St.



12648-10 Square Napkin Ring FSA
2.68 X 6.01 in.
68.07 X 152.65 mm
8,707 St.



12648-11 Blank Napkin Corner FSA
4.74 X 5.31 in.
120.40 X 134.87 mm
14,277 St.



12648-12 Blank Napkin Ring FSA
2.52 X 6.03 in.
64.01 X 153.16 mm
10,340 St.

Listings below indicate color sample, stitching order and suggested thread color number. Most numbers indicate Isacord thread. Colors beginning with 20501 refer to YLI Fine Metallics, 7 refer to Yenmet Metallic, 8 refer to YLI Variations Variegated Thread and 9 refer to Isacord Multicolor Variegated.

12648-01 Flower Napkin Corner FSA

<input type="checkbox"/>	1. Napkin Placement Guide	0015
<input type="checkbox"/>	2. Corner Cut Line & Tackdown	0015
<input type="checkbox"/>	3. Flower Placement Stitch	0015
<input type="checkbox"/>	4. Cut Line & Tackdown	0015
<input type="checkbox"/>	5. Inner Flower Detail	0015
<input checked="" type="checkbox"/>	6. Cover Stitch & Lace	2152

12648-05 Leaf Napkin Corner FSA

<input checked="" type="checkbox"/>	1. Napkin Placement Guide	1430
<input checked="" type="checkbox"/>	2. Corner Cut Line & Tackdown	1430
<input checked="" type="checkbox"/>	3. Leaf Placement Stitch	1430
<input checked="" type="checkbox"/>	4. Cut Line & Tackdown	1430
<input checked="" type="checkbox"/>	5. Inner Leaf Detail	1430
<input checked="" type="checkbox"/>	6. Cover Stitch & Lace	1362

12648-09 Square Napkin Corner FSA

<input type="checkbox"/>	1. Napkin Placement Guide	0015
<input type="checkbox"/>	2. Corner Cut Line & Tackdown	0015
<input type="checkbox"/>	3. Snowflake Placement Stitch	0015
<input type="checkbox"/>	4. Cut Line & Tackdown	0015
<input type="checkbox"/>	5. Inner Snowflake Detail	0015
<input checked="" type="checkbox"/>	6. Cover Stitch & Lace	1141

12648-02 Flower Napkin Ring FSA

<input type="checkbox"/>	1. Ring Placement Stitch	0015
<input type="checkbox"/>	2. Cut Line & Tackdown	0015
<input type="checkbox"/>	3. Inner Flower Detail	0015
<input checked="" type="checkbox"/>	4. Outer Flower Detail	2152
<input checked="" type="checkbox"/>	5. Back Cut Line & Tackdown	2152
<input checked="" type="checkbox"/>	6. Cover Stitch & Button Hole	2152

12648-06 Leaf Napkin Ring FSA

<input checked="" type="checkbox"/>	1. Ring Placement Stitch	1430
<input checked="" type="checkbox"/>	2. Cut Line & Tackdown	1430
<input checked="" type="checkbox"/>	3. Inner Leaf Detail	1430
<input checked="" type="checkbox"/>	4. Outer Leaf Detail	1362
<input checked="" type="checkbox"/>	5. Back Cut Line & Tackdown	1362
<input checked="" type="checkbox"/>	6. Cover Stitch & Button Hole	1362

12648-10 Square Napkin Ring FSA

<input type="checkbox"/>	1. Ring Placement Stitch	0015
<input type="checkbox"/>	2. Cut Line & Tackdown	0015
<input type="checkbox"/>	3. Inner Square Detail	0015
<input checked="" type="checkbox"/>	4. Outer Square Detail	1141
<input checked="" type="checkbox"/>	5. Back Cut Line & Tackdown	1141
<input checked="" type="checkbox"/>	6. Cover Stitch & Button Hole	1141

12648-03 Heart Napkin Corner FSA

<input checked="" type="checkbox"/>	1. Napkin Placement Guide	2810
<input checked="" type="checkbox"/>	2. Corner Cut Line & Tackdown	2810
<input checked="" type="checkbox"/>	3. Heart Placement Stitch	2810
<input checked="" type="checkbox"/>	4. Cut Line & Tackdown	2810
<input checked="" type="checkbox"/>	5. Inner Heart Detail	2810
<input checked="" type="checkbox"/>	6. Cover Stitch & Lace	2655

12648-07 Snowflake Napkin Corner FSA

<input checked="" type="checkbox"/>	1. Napkin Placement Guide	4103
<input checked="" type="checkbox"/>	2. Corner Cut Line & Tackdown	4103
<input checked="" type="checkbox"/>	3. Snowflake Placement Stitch	4103
<input checked="" type="checkbox"/>	4. Cut Line & Tackdown	4103
<input checked="" type="checkbox"/>	5. Inner Snowflake Detail	4103
<input checked="" type="checkbox"/>	6. Cover Stitch & Lace	3963

12648-11 Blank Napkin Corner FSA

<input checked="" type="checkbox"/>	1. Napkin Placement Guide	4174
<input checked="" type="checkbox"/>	2. Corner Cut Line & Tackdown	4174
<input checked="" type="checkbox"/>	3. Blank Placement Stitch	4174
<input checked="" type="checkbox"/>	4. Cut Line & Tackdown	4174
<input checked="" type="checkbox"/>	5. Inner Blank Detail	4174
<input checked="" type="checkbox"/>	6. Cover Stitch & Lace	5650

12648-04 Heart Napkin Ring FSA

<input checked="" type="checkbox"/>	1. Ring Placement Stitch	2810
<input checked="" type="checkbox"/>	2. Cut Line & Tackdown	2810
<input checked="" type="checkbox"/>	3. Inner Heart Detail	2810
<input checked="" type="checkbox"/>	4. Outer Heart Detail	2655
<input checked="" type="checkbox"/>	5. Back Cut Line & Tackdown	2655
<input checked="" type="checkbox"/>	6. Cover Stitch & Button Hole	2655

12648-08 Snowflake Napkin Ring FSA

<input checked="" type="checkbox"/>	1. Ring Placement Stitch	4103
<input checked="" type="checkbox"/>	2. Cut Line & Tackdown	4103
<input checked="" type="checkbox"/>	3. Inner Snowflake Detail	4103
<input checked="" type="checkbox"/>	4. Outer Snowflake Detail	3963
<input checked="" type="checkbox"/>	5. Back Cut Line & Tackdown	3963
<input checked="" type="checkbox"/>	6. Cover Stitch & Button Hole	3963

12648-12 Blank Napkin Ring FSA

<input checked="" type="checkbox"/>	1. Ring Placement Stitch	4174
<input checked="" type="checkbox"/>	2. Cut Line & Tackdown	4174
<input checked="" type="checkbox"/>	3. Inner Blank Detail	4174
<input checked="" type="checkbox"/>	4. Outer Blank Detail	5650
<input checked="" type="checkbox"/>	5. Back Cut Line & Tackdown	5650
<input checked="" type="checkbox"/>	6. Cover Stitch & Button Hole	5650

Isacord Thread Colors Used in "Seasonal Settings"

Collection #12648

0015 White	1430 Melon	3963 Hint of Blue
0150 Mystik Grey	2152 Heather Pink	4174 Charcoal
1141 Tantone	2655 Aura	5650 Spring Frost
1362 Shrimp	2810 Orchid	

FSA - Freestanding Appliqué

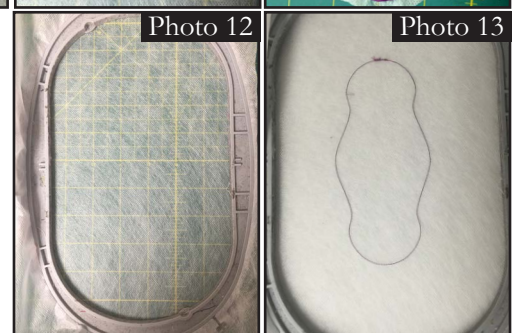
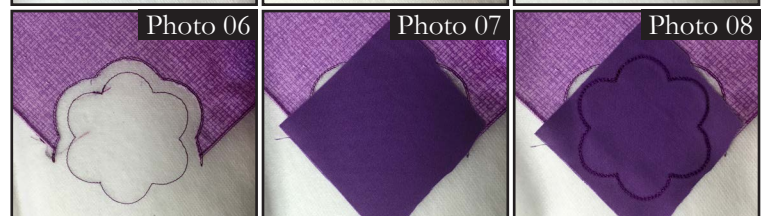
FSL - Freestanding Lace

Supplies

- OESD collection 12648
- OESD Aqua Mesh Plus
- OESD Aqua Mesh
- Temporary adhesive spray
- Isacord thread - 2 colors to coordinate with napkin
- Ready-made or self-made napkin (hemmed) 16" square or larger
- 4" square appliqué fabric for napkin (optional)
- 2 pieces 3" x 7" fabric for napkin ring
- ½" button

Instructions

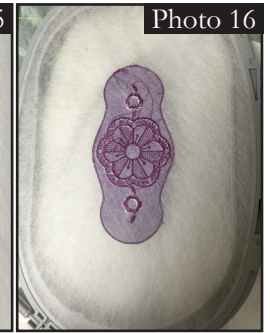
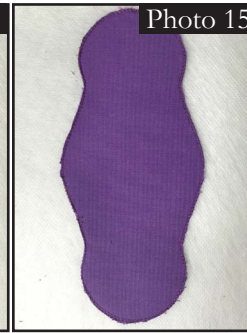
1. Thread the machine with Isacord thread to match the *Inner Detail*. Thread the bobbin with Isacord to match the *Cover Stitch*.
2. Hoop a piece of OESD Aqua Mesh Plus stabilizer with the paper backing side up.
3. Score and peel away the paper backing from the water-soluble stabilizer.
4. Place the hoop on the machine and stitch the first color change, *Napkin Placement Guide*. **PHOTO 01**
5. Place the napkin so one corner points down to the bottom of the hoop, aligning the edges of the napkin with the placement lines on the stabilizer. Smooth the napkin into place. **PHOTO 02**
6. Stitch the next color change, *Cut Line and Tackdown*. **PHOTO 03**
7. Trim the fabric **BELOW** the cutline as close as possible to the stitching line. Reserve the napkin corner you cut away. **PHOTO 04** and **PHOTO 05**
8. Stitch the next color change, *Placement Stitch*. **PHOTO 06**
9. Place a piece of appliqué fabric over the placement stitch and smooth into place. You may use the fabric you cut away in step 6 or use a different fabric for contrast. **PHOTO 07**
10. Stitch the next color change, *Cut Line and Tackdown*. **PHOTO 08**
11. Trim the appliqué fabric as closely as possible to the cut line. **PHOTO 09**
12. Stitch the next color change, *Inner Detail*.
13. Thread the machine with needle thread to match the bobbin.
14. Stitch the final color change, *Cover Stitch and Lace*. **PHOTO 10**
15. Remove the hoop from the machine and the project from the hoop.
16. Cut away the excess water soluble stabilizer. **PHOTO 11**
17. Rinse away the remaining water soluble stabilizer.



Napkin Ring

1. Thread the machine with a bobbin thread to match the cover stitch. Thread the needle with thread to match the inner details.
2. Hoop a piece of OESD Aqua Mesh. **PHOTO 12**
3. Place the hoop on the machine. Stitch the first color change, *Placement Stitch*. **PHOTO 13**

4. Lightly spray the back of a 3" x 7" piece of fabric with temporary adhesive spray.
5. Smooth the fabric onto the Aqua Mesh, centering it over the placement stitch.
6. Stitch the second color change, *Cut Line and Tackdown*. **PHOTO 14**



7. Trim the appliqué fabric as closely as possible to the cut line. **PHOTO 15**
8. Stitch color change 4, inner details.
9. Stitch color change 5, Satin stitch details
10. Remove the hoop from the machine but do not remove the project from the hoop.
11. Flip the hoop over. **PHOTO 16**



12. Lightly spray the back of a 3" x 7" piece of fabric with temporary adhesive spray.
13. Smooth the fabric over the back of the hoop, centering it over the embroidery design. **PHOTO 17**
14. Replace the hoop on the machine. Stitch the next color change, *Back Cut Line and Tackdown*.

15. Remove the hoop from the machine. Flip the hoop over and trim away the excess fabric as closely as possible to the cut line. **PHOTO 18**
16. Replace the hoop on the machine and stitch the final color change, cover stitch. **PHOTO 19**
17. Remove the project from the hoop and trim away the excess stabilizer. **PHOTO 20**



18. Position a 1/2" button over the button placement stitch. **PHOTO 21** and **PHOTO 22**
19. Stitch the button in place over the button placement. **PHOTO 23**

20. Cut open the buttonhole. Button the napkin ring together and place on folded napkin. **PHOTO 24**

