

Note: Some designs in this collection may have been created using unique special stitches and/or techniques. To preserve design integrity when rescaling or rotating designs in your software, always rescale or rotate designs using the handles directly on-screen.



12650-01 Base Snowball Side 1
FSL
 3.49 X 5.49 in.
 88.65 X 139.45 mm
 38,703 St.



12650-02 Base Snowball Side 2
FSL
 3.49 X 5.49 in.
 88.65 X 139.45 mm
 38,491 St.



12650-03 Mid Snowball Side 1
FSL
 2.56 X 3.94 in.
 65.02 X 100.08 mm
 19,259 St.



12650-04 Mid Snowball Side 2
FSL
 2.56 X 3.94 in.
 65.02 X 100.08 mm
 19,157 St.



12650-05 Mid Snowball Side 3
FSL
 2.56 X 3.94 in.
 65.02 X 100.08 mm
 19,338 St.



12650-06 Snowman Face FSL
 3.88 X 3.48 in.
 98.55 X 88.39 mm
 21,160 St.



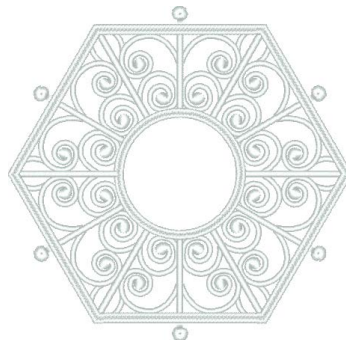
12650-07 Snowman Nose FSL
 2.29 X 1.69 in.
 58.17 X 42.93 mm
 4,248 St.



12650-08 Top Snowball Side FSL
 1.89 X 3.50 in.
 48.01 X 88.90 mm
 10,482 St.



12650-09 Top Snowball Back FSL
 3.88 X 3.48 in.
 98.55 X 88.39 mm
 20,940 St.



12650-10 Snowman Foundation
FSA
 4.81 X 4.68 in.
 122.17 X 118.87 mm
 21,976 St.



12650-11 Snowman Arms FSL
 1.59 X 6.87 in.
 40.39 X 174.50 mm
 10,990 St.



12650-12 Winter Hat Ring FSL
 1.01 X 8.84 in.
 25.65 X 224.54 mm
 17,260 St.

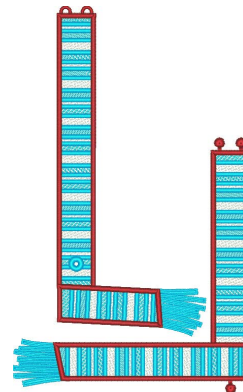
Note: Some designs in this collection may have been created using unique special stitches and/or techniques. To preserve design integrity when rescaling or rotating designs in your software, always rescale or rotate designs using the handles directly on-screen.



12650-13 Winter Hat FSL
4.29 X 4.93 in.
108.97 X 125.22 mm
25,260 St.



12650-14 Winter Hat Ball FSL
0.96 X 1.21 in.
24.38 X 30.73 mm
1,759 St.



12650-15 Winter Scarf FSL
4.87 X 8.02 in.
123.70 X 203.71 mm
37,932 St.

Listings below indicate color sample, stitching order and suggested thread color number. Most numbers indicate Isacord thread. Colors beginning with 20501 refer to YLI Fine Metallics, 7 refer to Yenmet Metallic, 8 refer to YLI Variations Variegated Thread and 9 refer to Isacord Multicolor Variegated.

<p>12650-01 Base Snowball Side 1 FSL</p> <ul style="list-style-type: none"> ■ 1. Black Buttons 4174 □ 2. White Lace 0015 <p>12650-02 Base Snowball Side 2 FSL</p> <ul style="list-style-type: none"> □ 1. White Lace 0015 <p>12650-03 Mid Snowball Side 1 FSL</p> <ul style="list-style-type: none"> ■ 1. Black Buttons 4174 □ 2. White Lace 0015 <p>12650-04 Mid Snowball Side 2 FSL</p> <ul style="list-style-type: none"> □ 1. White Lace 0015 <p>12650-05 Mid Snowball Side 3 FSL</p> <ul style="list-style-type: none"> □ 1. White Lace 0015 <p>12650-06 Snowman Face FSL</p> <ul style="list-style-type: none"> □ 1. White Lace 0015 ■ 2. Eyes 4174 	<p>12650-07 Snowman Nose FSL</p> <ul style="list-style-type: none"> ■ 1. Orange Lace 1010 <p>12650-08 Top Snowball Side FSL</p> <ul style="list-style-type: none"> □ 1. White Lace 0015 <p>12650-09 Top Snowball Back FSL</p> <ul style="list-style-type: none"> □ 1. White Lace 0015 <p>12650-10 Snowman Foundation FSA</p> <ul style="list-style-type: none"> □ 1. Foundation Placement Stitch 0015 □ 2. Cut Line & Tackdown 0015 □ 3. White Lace 0015 <p>12650-11 Snowman Arms FSL</p> <ul style="list-style-type: none"> □ 1. White Lace 0015 ■ 2. Brown lace 0763 	<p>12650-12 Winter Hat Ring FSL</p> <ul style="list-style-type: none"> ■ 1. Red Lace 1805 <p>12650-13 Winter Hat FSL</p> <ul style="list-style-type: none"> □ 1. White Lace 0015 ■ 2. Red Lace & Detail 1805 ■ 3. Blue Lace & Detail 4220 <p>12650-14 Winter Hat Ball FSL</p> <ul style="list-style-type: none"> □ 1. White Lace 0015 <p>12650-15 Winter Scarf FSL</p> <ul style="list-style-type: none"> □ 1. White Lace 0015 ■ 2. Blue Lace 4220 ■ 3. Red Lace 1805
--	---	---

Isacord Thread Colors Used in "Freestanding Lace Snowman 2" Collection #12650

0015 White	1805 Strawberry
0763 Dark Rattan	4174 Charcoal
1010 Toast	4220 Island Green

FSA - Freestanding Appliqué

FSL - Freestanding Lace

General Freestanding Lace Guidelines

Supplies:

Embroidery Thread:

- Use the same embroidery thread in the bobbin as the needle.

Needles:

- Use an Organ 80/12 Titanium needle for extended needle life.

Stabilizer:

- Use water-soluble stabilizer or film water-soluble stabilizer.

Handy Hints:

For Stiffer Lace:

- DO NOT rinse away all of the stabilizer for a “stiffer” lace. Note that the thread may appear a shade darker if stabilizer is not removed completely.
- If you happen to wash too much out, easily re-stiffen by diluting some stabilizer scraps in water and dipping the item in the solution.

For Very Soft Lace:

- Cut away excess stabilizer. Remove remaining stabilizer by rinsing under warm running water until all traces of the stabilizer are gone. **Note:** If lace should become too limp to work with, dissolve stabilizer scraps in warm water and apply to the lace.

Drying Lace:

- The lace looks best when left to dry completely. Lay lace piece with right side down to dry. This will minimize the tendency for the lace to curl. Be sure to flatten the piece out entirely and allow ample time to dry.

General Instructions

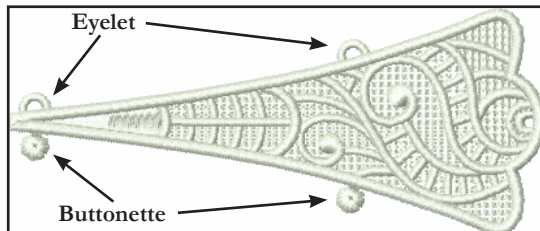
1. Hoop two layers of water-soluble stabilizer.
2. Attach the hoop to the machine and select the design of your choice.
3. Stitch the design.
4. Remove the hoop from the machine and the design from the hoop. Trim excess stabilizer from the design.
5. Rinse away remaining stabilizer and allow it to dry.

Handy Hints:

For 3D Lace Projects:

- Rinsing out lace with very hot water can cause wrinkles in some fabrics after it has been embroidered. To prevent this, pre-shrink cotton fabric by washing it in warm water and drying it in a dryer.
- If item becomes too limp to work with, iron the appliqué pieces on the wrong side while applying spray starch. After ironing, spray again with starch and allow to dry completely. This will stiffen the lace pieces nicely and aid in construction.
- A pair of tweezers, hemostats, stiletto or a tiny crochet hook can be extremely helpful when inserting the buttonettes into the eyelets. (Please see **Diagram 1** for explanation of “buttonette” and “eyelet”.)
- Insert the tip of the tweezers, hemostats or crochet hook into the eyelet, grasp the buttonette and pull through the eyelet. Or a stiletto could be used to push the buttonette through the eyelet.

Diagram 1



General Freestanding Appliqué Guidelines

Supplies:

Embroidery Thread:

- Use the same embroidery thread in the bobbin as the needle.

Needles:

- Use an Organ 80/12 Titanium needle for extended needle life.

Stabilizer:

- Use water-soluble stabilizer or film water-soluble stabilizer.

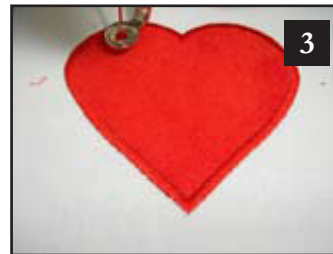
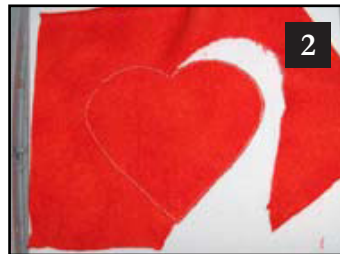
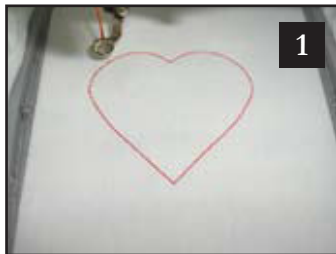
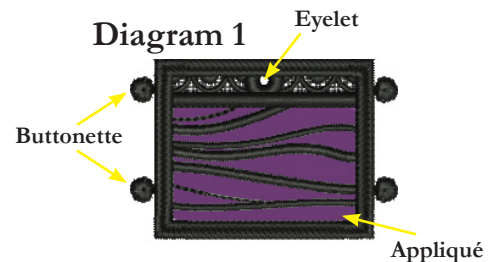
General Appliqué Instructions

1. Hoop two layers of OESD AquaMesh Stabilizer.
2. Attach the hoop to the machine and select the design of your choice.
3. Stitch the Placement Stitch. **Photo 1**
4. Place a piece of appliqué fabric over the Placement Stitch so that it is completely covered.
5. Stitch the Cut Line & Tackdown stitch.
6. Carefully cut away the excess appliqué fabric. **Photo 2**
7. Stitch the remainder of the design and repeat for any remaining pieces. **Photo 3**
8. Remove the hoop from the machine and the design from the hoop.
9. Trim excess stabilizer from the design.
10. Rinse away remaining stabilizer and allow it to dry.

Handy Hints

For 3D Appliqué Projects:

- Adhere 1 layer of OESD StabilStick Tear Away to the back of appliqué fabrics with temporary adhesive spray **BEFORE** hooping or placing down for tackdown and cut in place. This gives fabric a more rigid structure.
- A pair of tweezers, hemostats, stiletto or a tiny crochet hook can be extremely helpful when inserting the buttonettes into the eyelets. (See **Diagram 1** for explanation of “buttonette” and “eyelet”.)
- Insert the tip of the tweezers, hemostats or crochet hook into the eyelet, grasp the buttonette and pull through the eyelet. Or a stiletto could be used to push the buttonette through the eyelet.



Snowman 2 - Summary

- Requires 1 Base Snowball Side 1 FSL - 12650-01
- Requires 5 Base Snowball Side 2 FSL - 12650-02
- Requires 1 Mid Snowball Side 1 FSL - 12650-03
- Requires 3 Mid Snowball Side 2 FSL - 12650-04
- Requires 2 Mid Snowball Side 3 FSL - 12650-05
- Requires 1 Snowman Face FSL - 12650-06
- Requires 1 Snowman Nose FSL - 12650-07
- Requires 2 Top Snowball Side FSL - 12650-08
- Requires 1 Top Snowball Back FSL - 12650-09
- Requires 1 Snowman Foundation FSA - 12650-10
- Requires 1 Snowman Arms FSL - 12650-11
- Requires 1 Winter Hat Ring FSL - 12650-12
- Requires 1 Winter Hat FSL - 12650-13
- Requires 1 Winter Hat Ball FSL - 12650-14
- Requires 1 Winter Scarf FSL - 12650-15



Supplies

- OESD AquaMesh stabilizer
- OESD StabilStick Cut Away (for appliqué section)
- Isacord threads (use the same embroidery thread in the bobbin as the needle)
- Appliqué fabrics (for appliqué section)
- *Optional:* alligator clamps, tweezers, hemostats, stiletto or a tiny crochet hook

Follow the *General Freestanding Lace Guidelines* and *General Freestanding Appliqué Guidelines* to stitch the required pieces as listed in the summary above.

General Snowman 2 Instructions

- For the appliqué section, place a scrap of OESD StabilStick on the wrong side of the appliqué piece. This will interface and stiffen the applique fabric to help hold up to the lace stitching and the rinsing and drying process.
- Stitch each piece on two layers of OESD AquaMesh stabilizer.
- For best results, match the bobbin thread to the top thread throughout the design. (This will mean switching out the bobbin several times for each design.)
- After stitching each design, cut away the excess OESD AquaMesh stabilizer. Rinse the design in warm running water.
- Shape the nose for the snowman during the drying process.
- Allow the pieces to dry overnight. Press each piece flat with a warm iron if needed once dry. Use starch if needed.

Assembly Instructions

Assemble Hat

- Using alligator clamps, pull buttonettes on the Winter Hat through the eyelets on the Winter Hat. **PHOTO 1**
- Next, pull the Winter Hat Ball buttonette through the top of the Winter Hat eyelet. **PHOTO 2**
- Connect the buttonettes on the Winter Hat through the eyelets in the middle of the Winter Hat Ring. The straight edge of the Winter Hat Ring goes towards the bottom of the hat. **PHOTO 3**
- Connect the buttonette and eyelet on the Winter Hat Ring. **PHOTO 4**



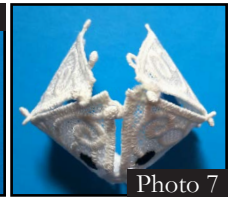
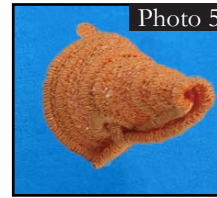
- Your Winter Hat is complete.
- Set aside.

Assemble Nose

- Pull buttonette through eyelet on the Snowman Nose, from the outside to inside, so that the buttonette is hidden.

PHOTO 5

- Set aside.



Assemble Snowman Head

- Using alligator clamps, pull buttonettes on the Snowman Face through the eyelets on the Snowman Face. **PHOTO 6**
- Next, connect a Top Snowball Side to each side of the Snowball Face. **PHOTO 7**
- Button the buttonette/eyelets on the Top Snowball Back.
- Button the Top Snowball Back to face structure to form a circle. **PHOTO 8**
- Pull buttonette on Snowman Nose through the eyelet on Snowman Face.

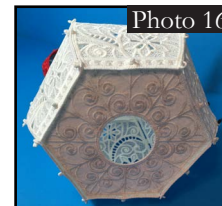
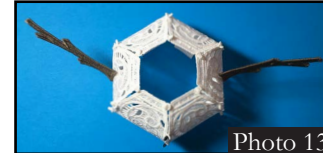
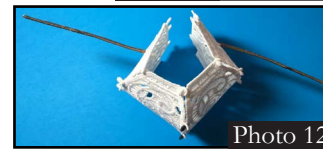
PHOTO 9

- Button Snowman Hat to Snowman Head. **PHOTO 10**
- Set aside.



Assemble Snowman Body

- Assemble the snowman middle sections by inserting the buttonettes of Mid Snowman Side into the eyelets of Mid Snowball 2. **PHOTO 11**
- Next, connect a Mid Snowball Side 3 to each side of the section.
- Insert the tabs of Snowman Arms into Mid Snowball Side 3 slots. **PHOTO 12**
- Continue with adding Mid Snowball Side 2 until the middle section is together, forming a circle. **PHOTO 13**
- Attach the snowman head to the snowman middle section by placing the tabs of the snowman head into the slots of the middle section, pulling from the bottom.
- Set aside.
- Assemble the snowman bottom section by inserting the buttonettes of Base Snowball Side 1 into the eyelets on Base Snowball Side 2. **PHOTO 14**
- Continue with all Base Snowball Side 2 sections until the bottom section is complete, forming a circle – waiting to button the last section until the middle section is pulled down through the bottom section. **PHOTO 15**
- Appliqué side facing out – attach the Snowman base (Snowman Foundation) to bottom section of snowman by inserting buttonettes from the base into the eyelets of the bottom section. **PHOTO 16**
- Finish building the snowman by placing the tabs of the middle section into the slots of the bottom section, pulling from the bottom of the snowman. **PHOTO 17**
- Now button last section of buttonette/eyelets on the bottom section of snowman.



Assemble the Winter Scarf

- Pull the one buttonette on scarf through the eyelet of the opposite scarf.
- Button scarf at the back of snowman by placing buttonettes through the eyelets. **PHOTO 18**



Your Freestanding Snowman is complete!