

#12840



- Project instructions included
- Fits hoop sizes 5" x 7" & larger



11
DESIGNS

Freestanding Quilted Frames

THREAD LIST



Isacord Thread Colors

- 0020 Black
- 0108 Cobblestone
- 0851 Old Gold
- 1134 Light Cocoa
- 2506 Cerise
- 2560 Azalea Pink
- 4116 Dark Teal
- 4122 Peacock
- 5440 Mint
- 5515 Kelly

DESIGNS

Note: Some designs in this collection may have been created using unique special stitches and/or techniques. To preserve design integrity when rescaling or rotating designs in your software, always rescale or rotate designs using the handles directly on-screen.

*Fabric Required



12840-01 Dresden Photo Frame FSA

Size Inches: Size mm: Stitch Count:
7.41 X 5.44 in. 188.2 X 138.2 mm 36259 St.

- 1. Front & Back Pink Fabric Placement Stitch..... 2506
- 2. Cut Line & Tackdown..... 2506
- 3. Dark Pink Detail on Pink Fabric..... 2506
- 4. Front & Back Black Fabric Placement Stitch 2560
- 5. Cut Line & Tackdown..... 2560
- 6. Pink Detail on Black Fabric..... 2560
- 7. Lace & Cover Stitch..... 2560

Note: Some designs in this collection may have been created using unique special stitches and/or techniques. To preserve design integrity when rescaling or rotating designs in your software, always rescale or rotate designs using the handles directly on-screen.

*Fabric Required



12840-02 Loopy Photo Frame FSA

Size Inches: Size mm: Stitch Count:
 7.98 X 5.97 in. 202.7 X 151.6 mm 32018 St.

- 1. Front & Back Blue Fabric Placement Stitch.....4116
- 2. Cut Line & Tackdown.....4116
- 3. Teal Details on Blue Fabric.....4116
- 4. Front & Back Black Fabric Placement Stitch 4122
- 5. Cut Line & Tackdown..... 4122
- 6. Light Blue Detail on Black Fabric..... 4122
- 7. Lace & Cover Stitch..... 4122

*Fabric Required



12840-03 Feather Photo Frame FSA

Size Inches: Size mm: Stitch Count:
 6.14 X 6.14 in. 156.0 X 156.0 mm 29368 St.

- 1. Front & Back Green Fabric Placement Stitch... 5515
- 2. Cut Line & Tackdown 5515
- 3. Dark Green Detail on Green Fabric..... 5515
- 4. Front & Back Black Fabric Placement Stitch 5440
- 5. Cut Line & Tackdown..... 5440
- 6. Light Green Detail on Black Fabric..... 5440
- 7. Lace & Cover Stitch..... 5440

Note: Some designs in this collection may have been created using unique special stitches and/or techniques. To preserve design integrity when rescaling or rotating designs in your software, always rescale or rotate designs using the handles directly on-screen.

*Fabric Required



12840-04 Quilt Block Photo Frame FSA

Size Inches: Size mm: Stitch Count:
 5.45 X 5.42 in. 138.4 X 137.7 mm 29233 St.

- 1. Front & Back Brown Fabric Placement Stitch.... 1134
- 2. Cut Line & Tackdown..... 1134
- 3. Dark Brown Detail on Brown Fabric 1134
- 4. Front & Back Black Fabric Placement Stitch 0851
- 5. Cut Line & Tackdown..... 0851
- 6. Tan Detail on Black Fabric..... 0851
- 7. Lace & Cover Stitch..... 0851

*Fabric Required



12840-05 Photo Frame Stand FSA

Size Inches: Size mm: Stitch Count:
 6.76 X 5.47 in. 171.7 X 138.9 mm 15213 St.

- 1. Front & Back Black Fabric Placement Stitch 0108
- 2. Cut Line & Tackdown..... 0108
- 3. Front & Back Black Fabric Placement Stitch 0108
- 4. Cut Line & Tackdown..... 0108
- 5. Inner Detail & Cover Stitch 0108

Note: Some designs in this collection may have been created using unique special stitches and/or techniques. To preserve design integrity when rescaling or rotating designs in your software, always rescale or rotate designs using the handles directly on-screen.

12840-06 Mini Dresden Flower 1 FSL

Size Inches:	Size mm:	Stitch Count:
2.33 X 2.34 in.	59.2 X 59.4 mm	11904 St.

■ 1. Single Color Design..... 2506



12840-07 Mini Dresden Flower 2 FSL

Size Inches:	Size mm:	Stitch Count:
1.87 X 1.87 in.	47.5 X 47.5 mm	8174 St.

■ 1. Single Color Design..... 0020

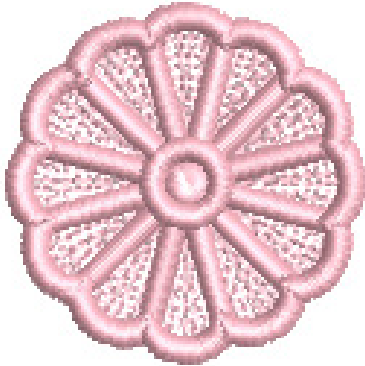


Note: Some designs in this collection may have been created using unique special stitches and/or techniques. To preserve design integrity when rescaling or rotating designs in your software, always rescale or rotate designs using the handles directly on-screen.

12840-08 Mini Dresden Flower 3 FSL

Size Inches:	Size mm:	Stitch Count:
1.46 X 1.45 in.	37.1 X 36.8 mm	4116 St.

■ 1. Single Color Design..... 2560



12840-09 Mini Loopy Flower FSL

Size Inches:	Size mm:	Stitch Count:
1.72 X 1.72 in.	43.7 X 43.7 mm	5424 St.

■ 1. Single Color Design.....4116



Note: Some designs in this collection may have been created using unique special stitches and/or techniques. To preserve design integrity when rescaling or rotating designs in your software, always rescale or rotate designs using the handles directly on-screen.

12840-10 Mini Feather Flower FSL

Size Inches:	Size mm:	Stitch Count:
2.08 X 2.08 in.	52.8 X 52.8 mm	10944 St.

■ 1. Single Color Design..... 5515



12840-11 Mini Quilt Block FSL

Size Inches:	Size mm:	Stitch Count:
1.94 X 1.94 in.	49.3 X 49.3 mm	6331 St.

■ 1. Single Color Design..... 1134



COLLECTION SUPPLIES



Stabilizer

- OESD AquaMesh
- OESD StabilStick TearAway

Supplies

- Applique Fabric
- OESD Fiber Form (Used only with the Frame Stand)
- Temporary Spray Adhesive

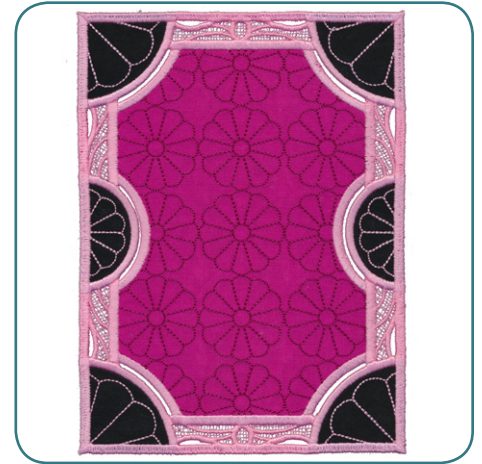
SUMMARY



Dresden Photo Frame

Design:
12840-01

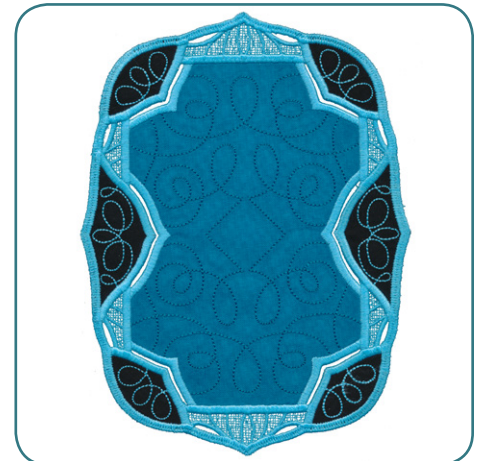
Fabric:
Pink fabric: 2 pieces 7" x 5"
Black fabric: 8 pieces 2.5" x 2.5"
Black fabric: 4 pieces 2.5" x 1.5"



Loopy Photo Frame

Design:
12840-02

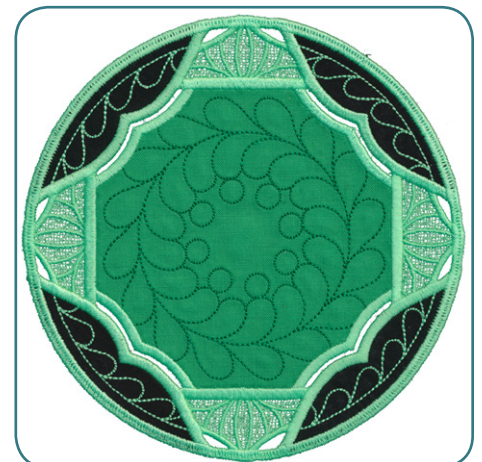
Fabric:
Blue fabric: 2 pieces 7" x 5"
Black fabric: 4 pieces 3.5" x 1.75"
Black fabric: 8 pieces 2.5 x 2"



Feather Photo Frame

Design:
12840-03

Fabric:
Green fabric: 2 pieces 5" x 5"
Black fabric: 8 pieces 4" x 2"



SUMMARY



Quilt Block Photo Frame

Design:
12840-04

Fabric:
Brown fabric: 2 pieces 5" x 5"
Black fabric: 8 pieces 2" x 2"

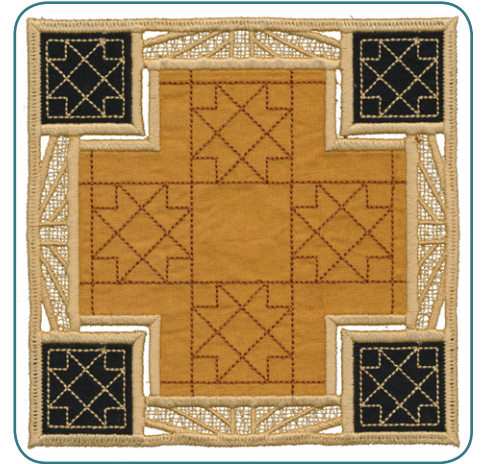


Photo Frame Stand

Design:
12840-05

Fabric:
Black fabric: 2 pieces 6" x 4"



FRAMES



STEP 1

- Prep largest two pieces of fabric with StabilStick TearAway.
- **Note - Match the color of fabric and the sizes with the design you are sewing.**



STEP 2

- Hoop 2 layers of OESD AquaMesh. Stitch the first color change, the Placement Stitch.



STEP 3

- Lightly spray the wrong side of the front applique piece with temporary spray adhesive and place directly over the placement stitch covering it entirely.



FRAMES



STEP 4

- Flip the hoop over and repeat process for the backside of the hoop.



STEP 5

- Return the hoop to the machine and sew the Cut Line and Tackdown



STEP 6

- Remove the hoop from the machine but DO NOT remove the project from the hoop.
- Trim applique fabric close to the cut line.

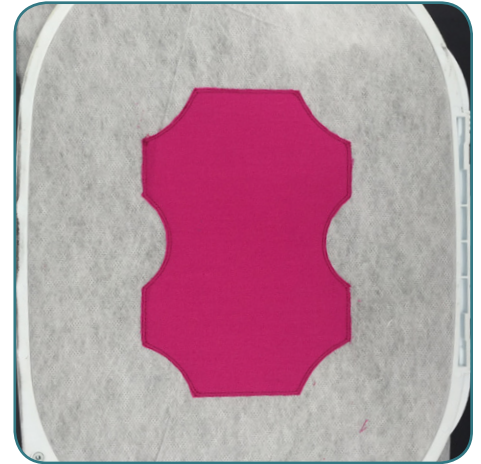


FRAMES



STEP 7

- Flip the hoop over and repeat on the backside.



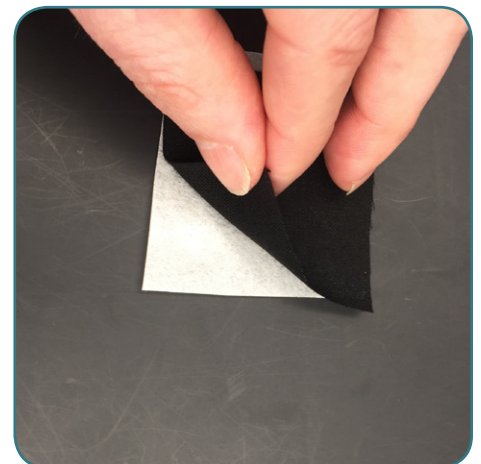
STEP 8

- Return the hoop to the machine and sew the inner detail.



STEP 9

- Prep the black fabric with StabilStick TearAway.
- **Note - Match the color of fabric and the sizes with the design you are sewing.**



FRAMES



STEP 10

- Sew the placement stitches for the pieces of black fabric.



STEP 11

- Lightly spray the wrong side of the front applique pieces with temporary spray adhesive and place directly over the placement stitches, covering it entirely.



STEP 12

- Flip the hoop over and repeat process for the backside of the hoop.



FRAMES



STEP 13

- Return the hoop to the machine and sew Cut Line and Tackdown.



STEP 14

- Remove the hoop from the machine but DO NOT remove the project from the hoop.
- Trim applique fabric close to the cut line.



STEP 15

- Flip the hoop over and repeat on the backside.



FRAMES



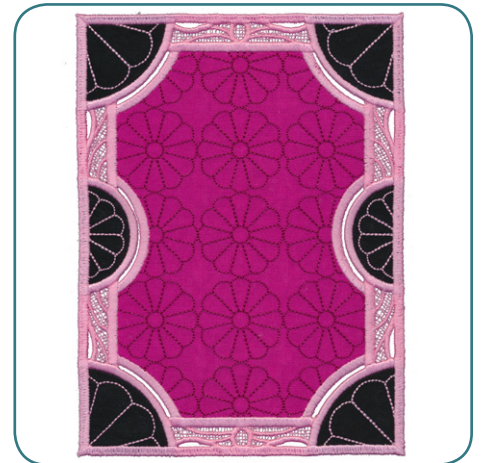
STEP 16

- Return the hoop to the machine and sew the rest of the design



STEP 17

- After sewing is completed, remove the design from the hoop and trim off some of the extra stabilizer.
- Remove the remaining stabilizer by rinsing in warm running water and lay flat face down to dry.



FRAME STAND



STEP 1

- Using the Fiber Form pattern included with these instructions, place on top of appropriate size of Fiber Form and cut the piece out just on the inside of the lines.



STEP 2

- Hoop 2 layers of OESD AquaMesh. Stitch the first color change, the Placement Stitch.



STEP 3

- Lightly spray back of Fiber Form piece and center on Placement Stitch line.

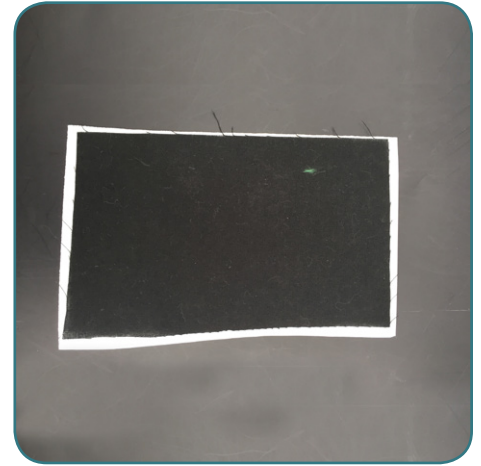


FRAME STAND



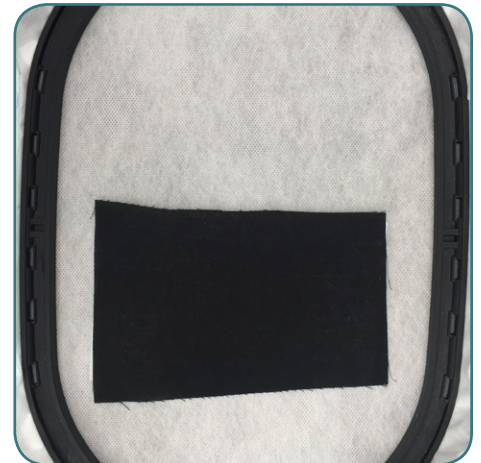
STEP 4

- Prep 4 pieces of black fabric with StabilStick TearAway for the front and back of stand.



STEP 5

- Lightly spray back of StabilStick TearAway that's on the fabric and place over the Placement Stitch and Fiber Form pattern.



STEP 6

- Flip the hoop over and place the second piece of fabric over Placement Stitch.



FRAME STAND



STEP 7

- Sew the next machine step, Cut Line and Tackdown.



STEP 8

- Remove the hoop from the machine and trim the fabric along the Cut Line.



STEP 9

- Flip the hoop over and repeat the process.



FRAME STAND



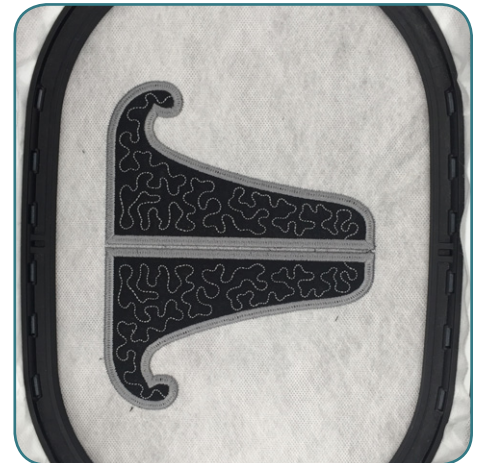
STEP 10

- Repeat steps 5 - 9 for the other side of the frame.



STEP 11

- After sewing is completed, remove the design from the hoop and trim off the extra stabilizer.

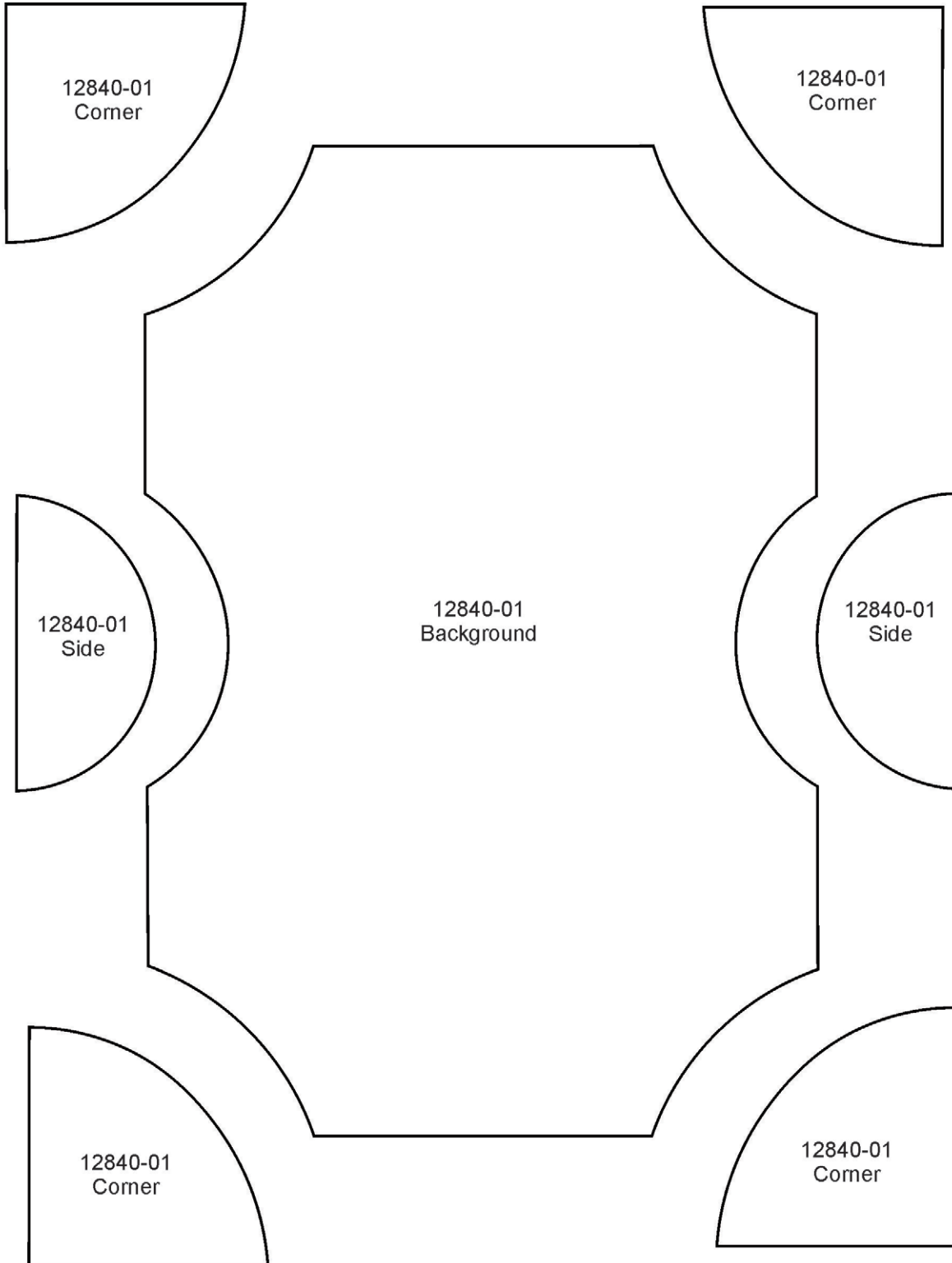


STEP 12

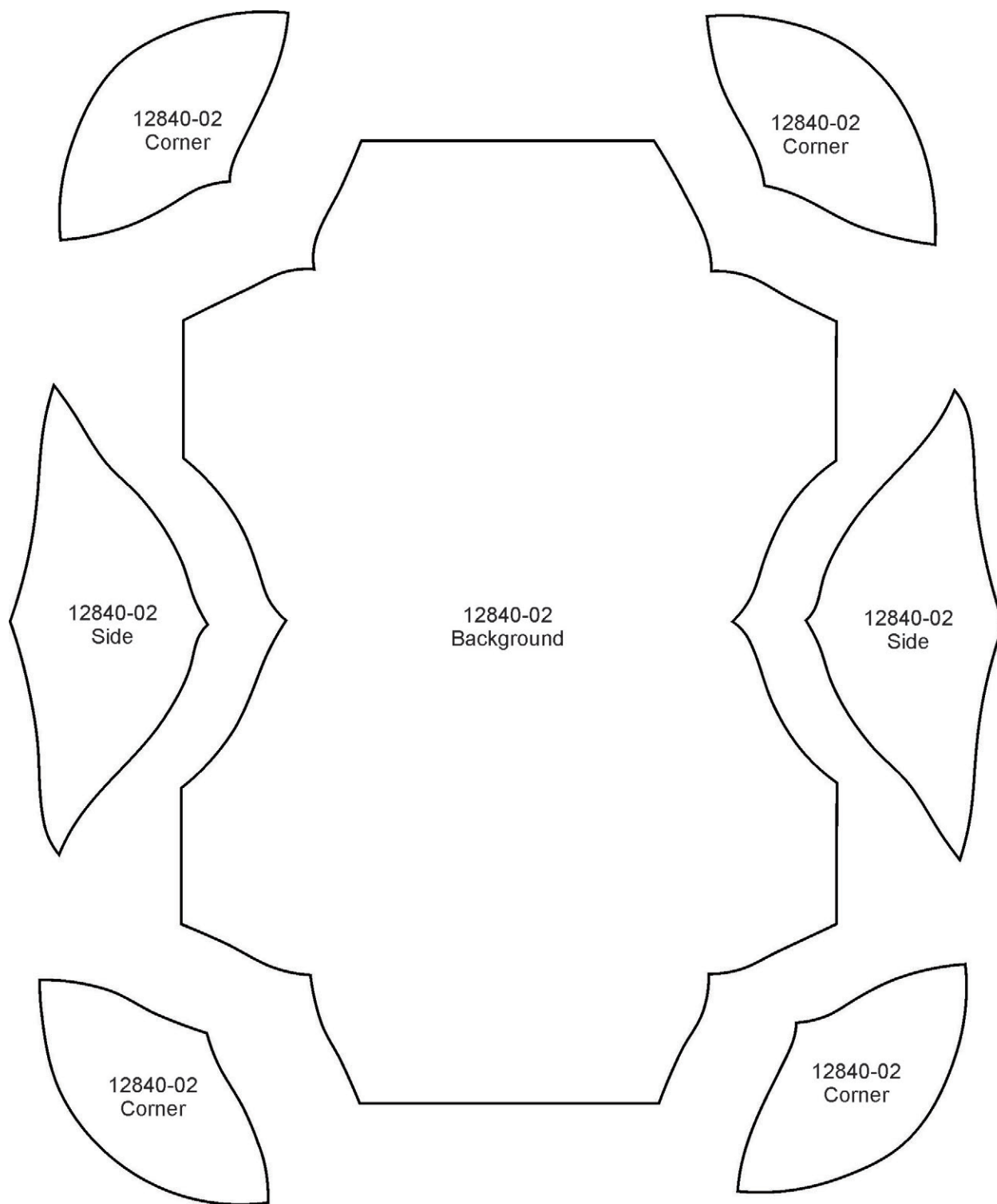
- Remove the remaining stabilizer by rinsing in warm running water and lay flat face down to dry.



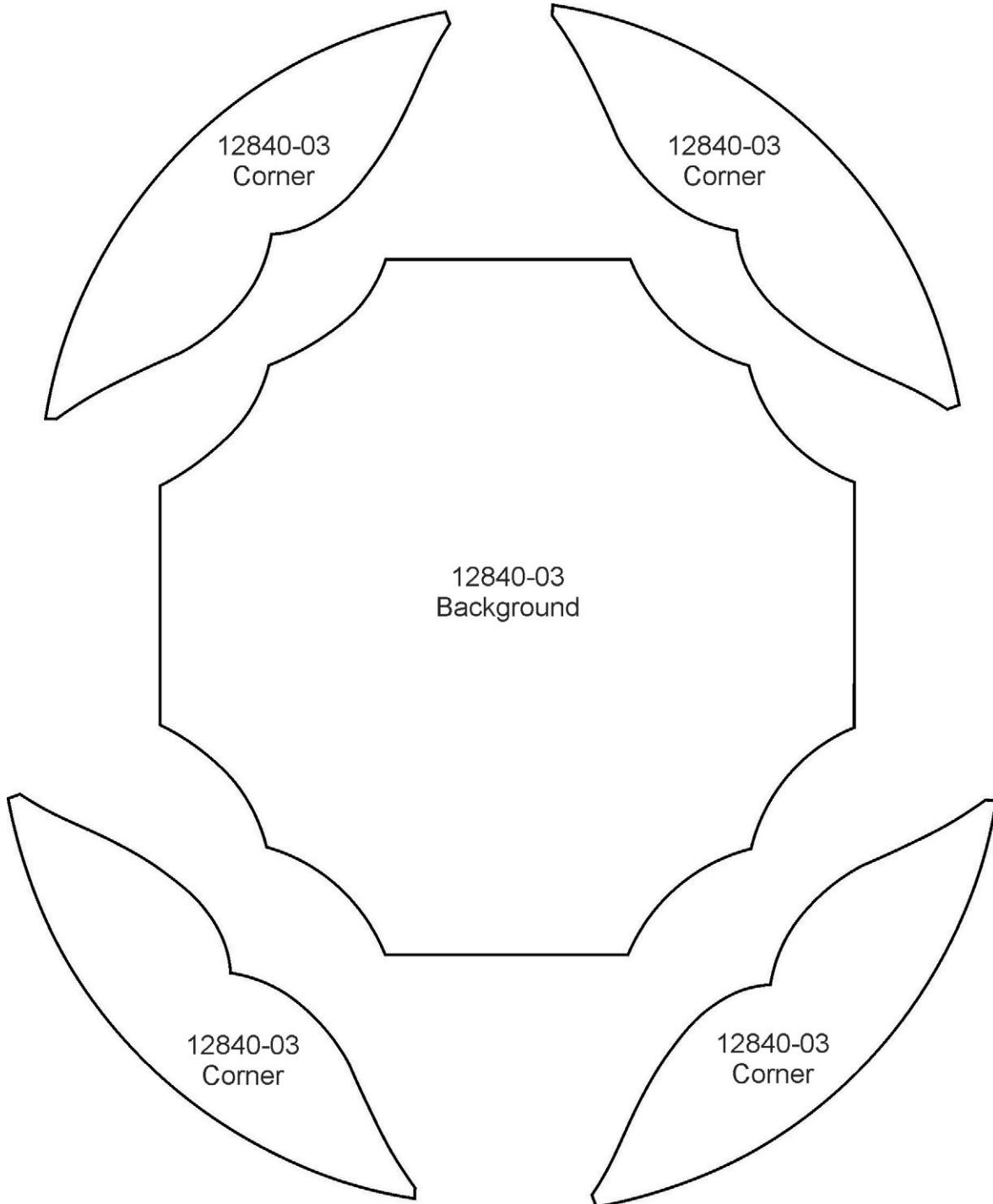
APPLIQUE PATTERNS



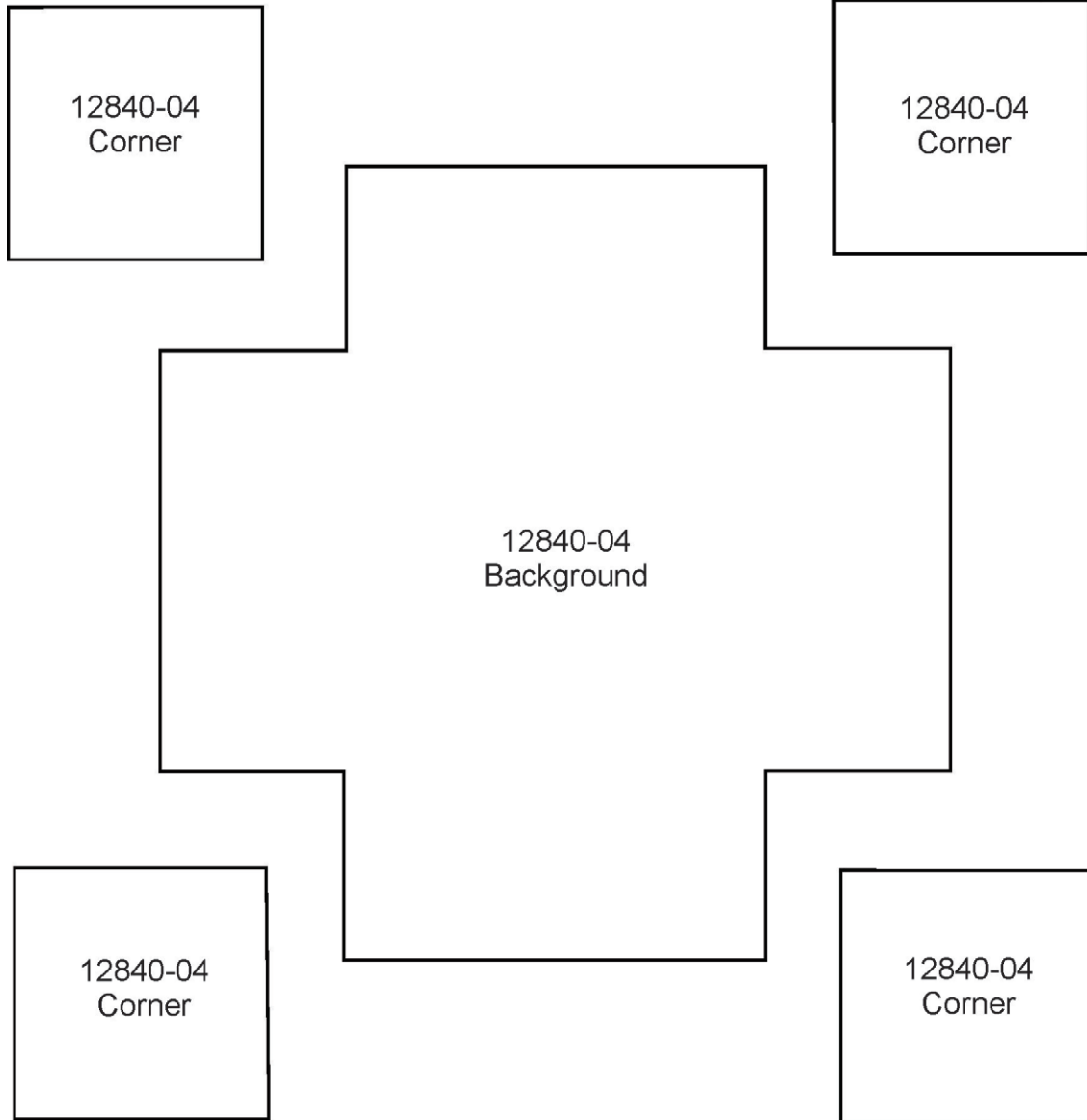
APPLIQUE PATTERNS



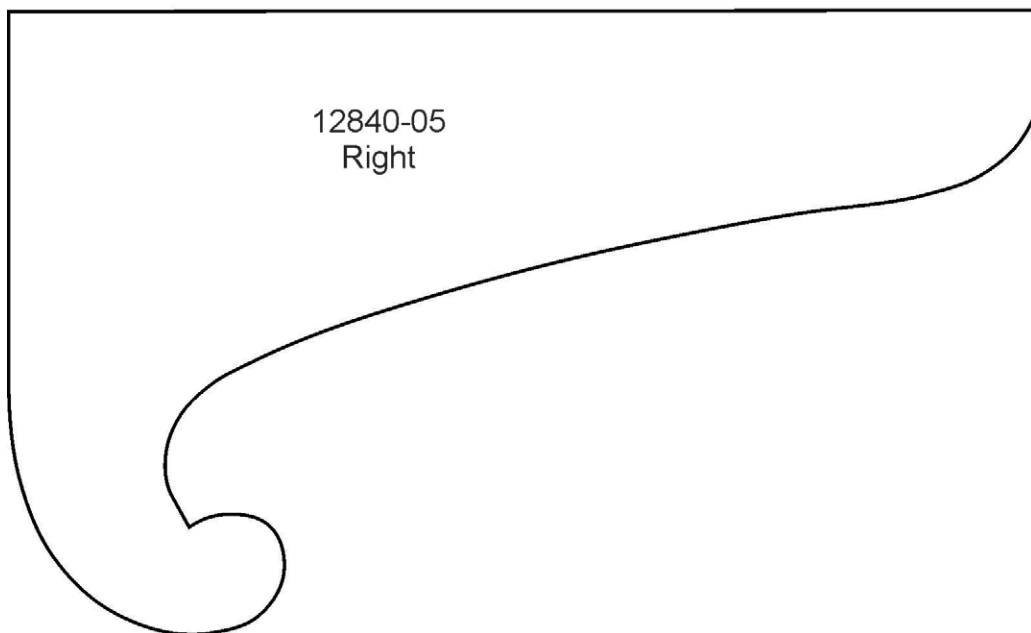
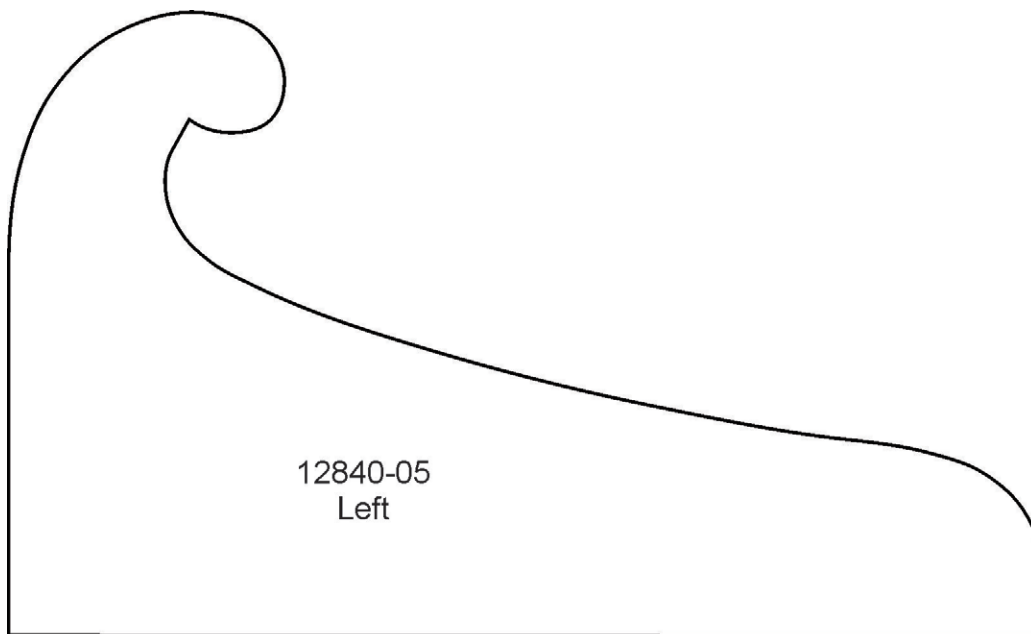
APPLIQUE PATTERNS



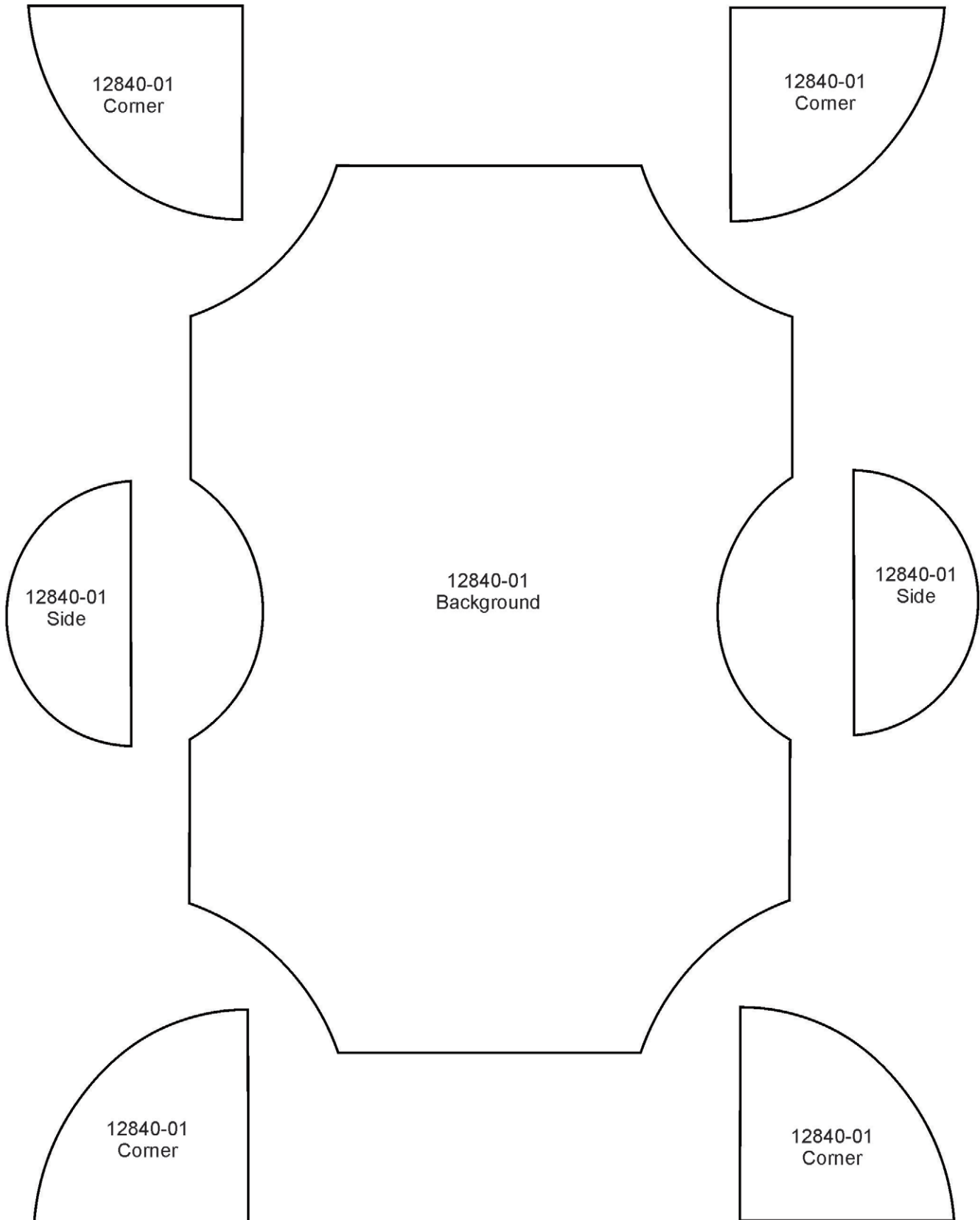
APPLIQUE PATTERNS



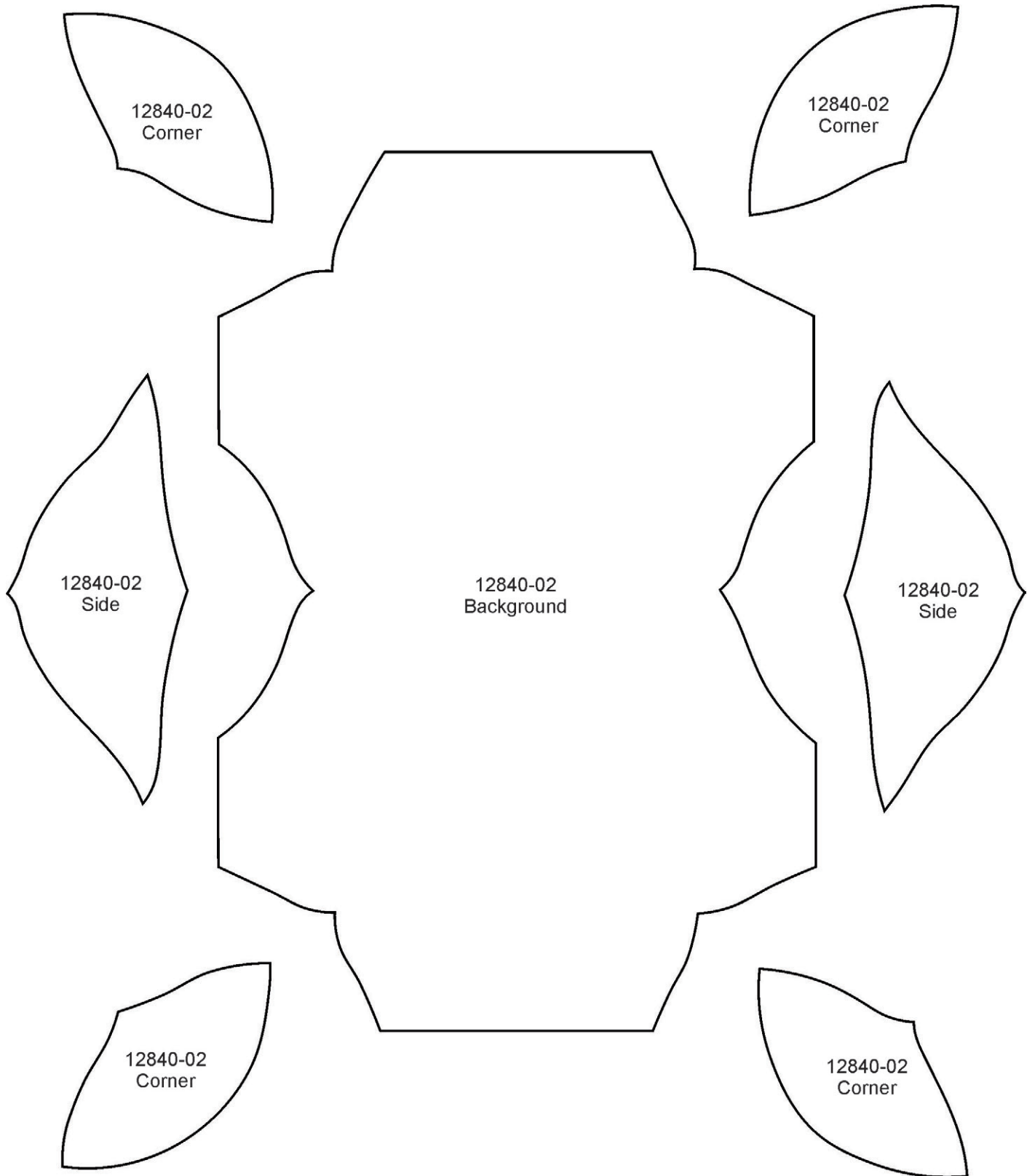
APPLIQUE PATTERNS



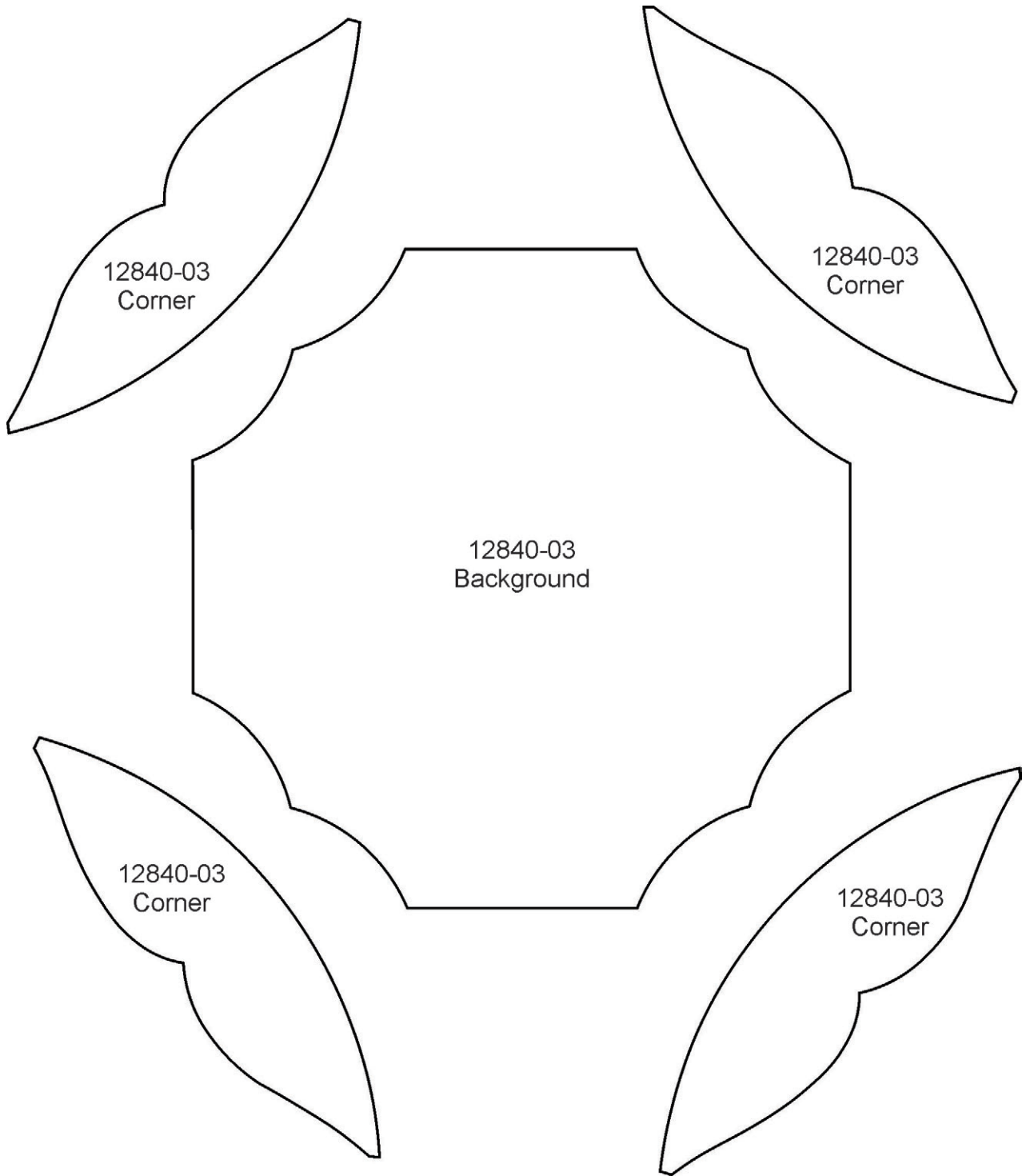
MIRRORED PATTERNS



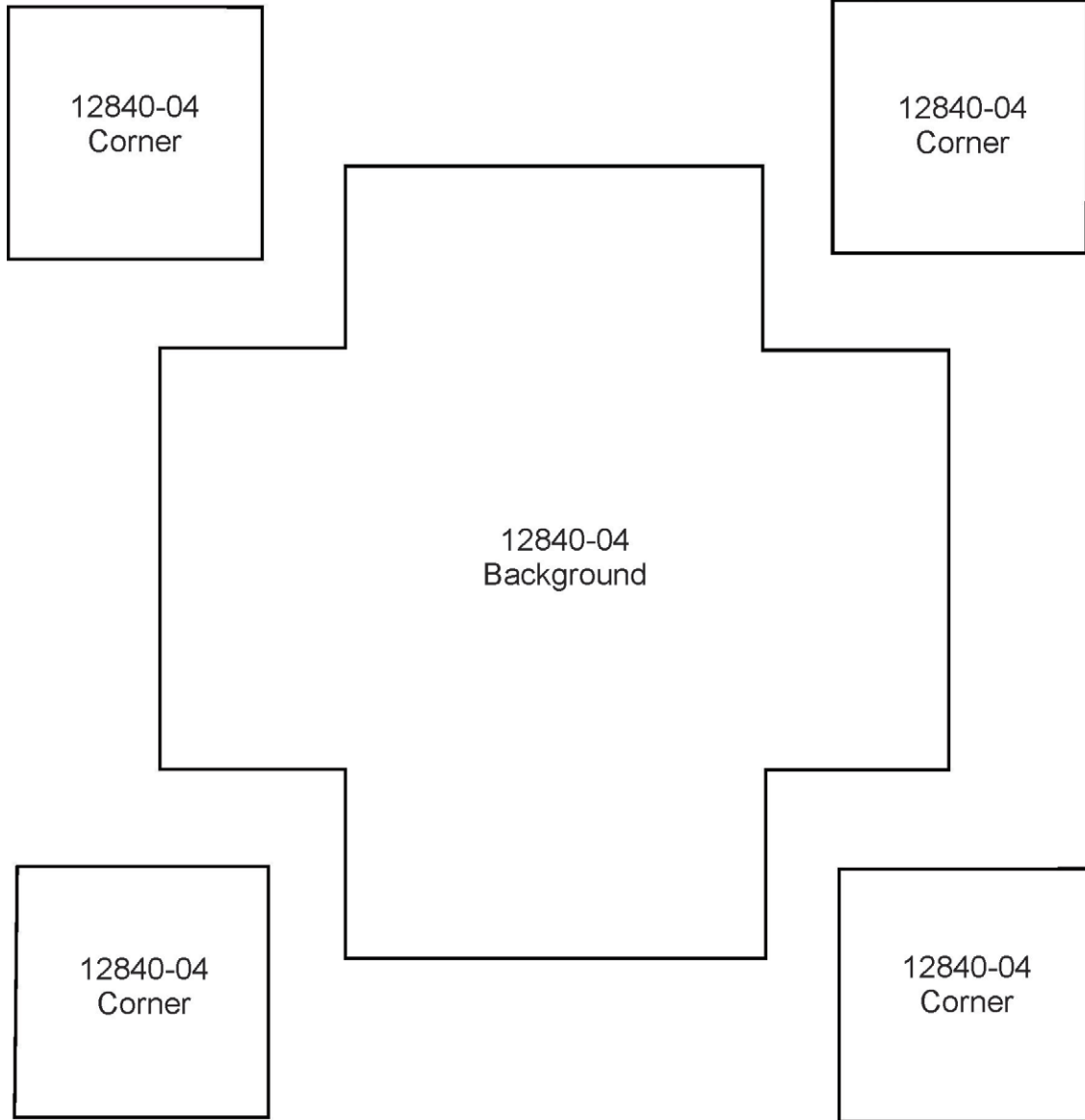
MIRRORED PATTERNS



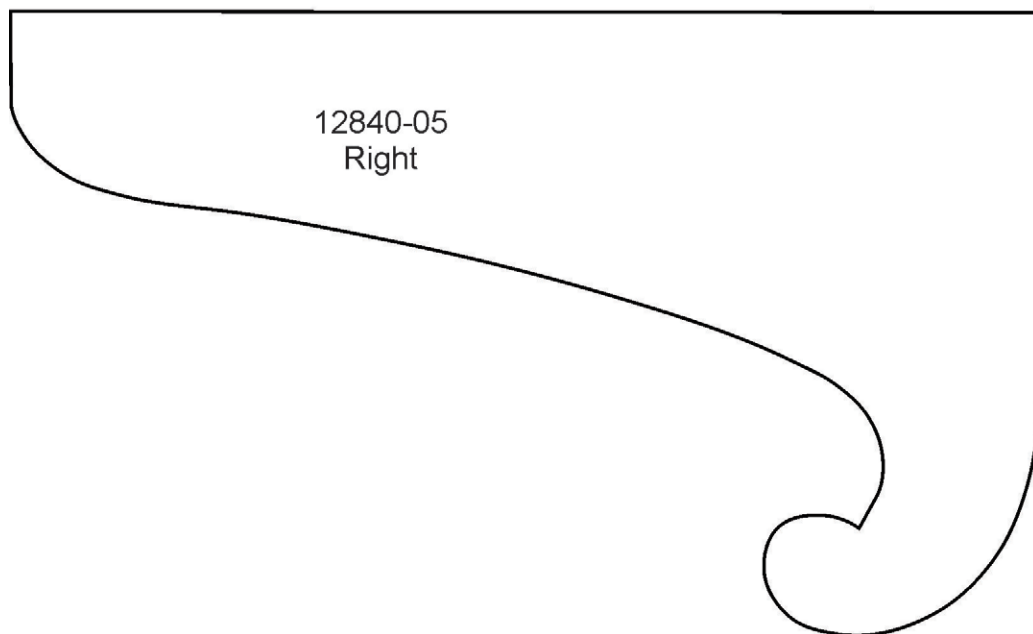
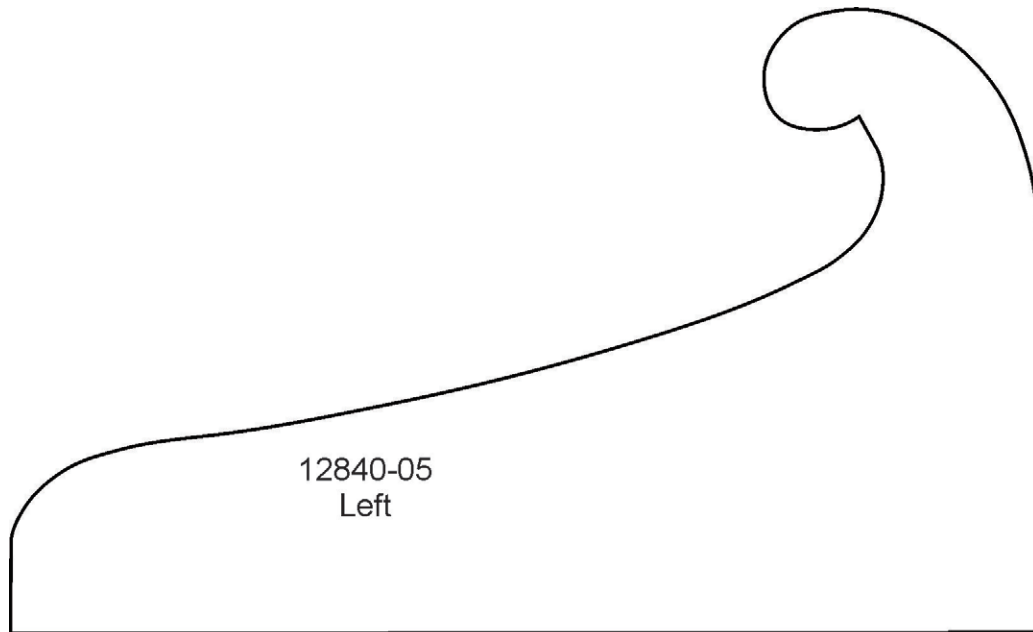
MIRRORED PATTERNS



MIRRORED PATTERNS



MIRRORED PATTERNS



General Freestanding Lace Guidelines

Supplies:

Embroidery Thread:

- Use the same embroidery thread in the bobbin as the needle.

Needles:

- Use an Organ 80/12 Titanium needle for extended needle life.

Stabilizer:

- Use OESD AquaMesh stabilizer.

Handy Hints:

For Stiffer Lace:

- DO NOT rinse away all of the stabilizer for a “stiffer” lace. Note that the thread may appear a shade darker if stabilizer is not removed completely.
- If you happen to wash too much out, easily re-stiffen by diluting some stabilizer scraps in water and dipping the item in the solution.

For Very Soft Lace:

- Cut away excess stabilizer. Remove remaining stabilizer by rinsing under warm running water until all traces of the stabilizer are gone. **NOTE:** If lace should become too limp to work with, dissolve stabilizer scraps in warm water and apply to the lace.

Drying Lace:

- The lace looks best when left to dry completely. Lay lace piece with right side down to dry. This will minimize the tendency for the lace to curl. Be sure to flatten the piece out entirely and allow ample time to dry.

General Instructions

1. Hoop two layers of OESD AquaMesh Stabilizer.
2. Attach the hoop to the machine and select the design of your choice.
3. Stitch the design.
4. Remove the hoop from the machine and the design from the hoop. Trim excess stabilizer from the design.
5. Rinse away remaining stabilizer and allow it to dry.

Handy Hints:

For 3D Lace Projects:

- If item becomes too limp to work with, iron the lace pieces on the wrong side while applying spray starch. After ironing, spray again with starch and allow to dry completely. This will stiffen the lace pieces nicely and aid in construction.
- A pair of tweezers, hemostats, stiletto or a tiny crochet hook can be extremely helpful when inserting the buttonettes into the eyelets. (Please see **Diagram 1** for explanation of “buttonette” and “eyelet”.)
- Insert the tip of the alligator clamps, tweezers, hemostats or crochet hook into the eyelet, grasp the buttonette and pull through the eyelet. Or a stiletto could be used to push the buttonette through the eyelet.

Diagram 1

