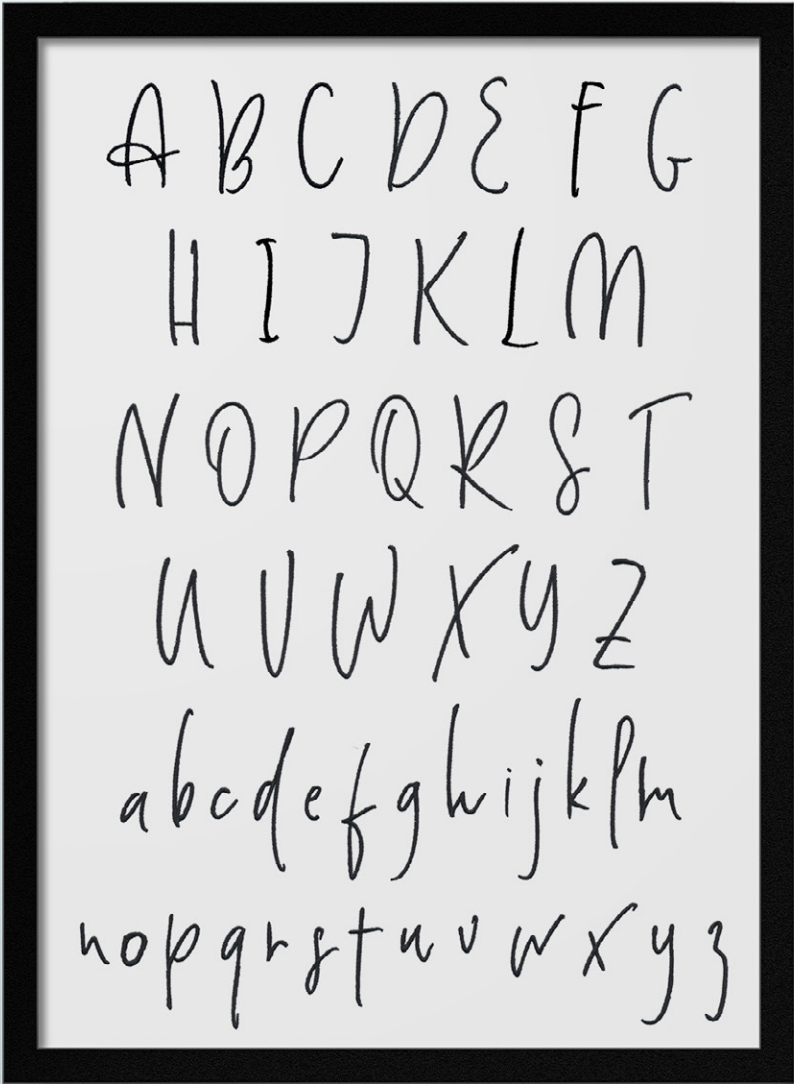


PENNED ALPHABET



52
Designs

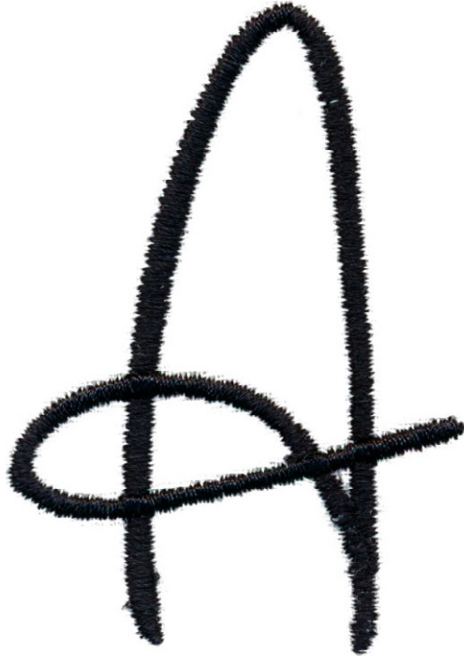
Fits hoop sizes 4" x 4" and larger

Note: Some designs in this collection may have been created using unique special stitches and/or techniques. To preserve design integrity when rescaling or rotating designs in your software, always rescale or rotate designs using the handles directly on-screen.

12877-01 Penned Uppercase A

Size Inches:	Size mm:	Stitch Count:
2.23 X 1.56 in.	56.7 X 39.5 mm	1531 St.

■ 1. Single Color Design..... 0020



12877-02 Penned Uppercase B

Size Inches:	Size mm:	Stitch Count:
2.40 X 1.16 in.	60.9 X 29.5 mm	1458 St.

■ 1. Single Color Design..... 0020



Note: Some designs in this collection may have been created using unique special stitches and/or techniques. To preserve design integrity when rescaling or rotating designs in your software, always rescale or rotate designs using the handles directly on-screen.

12877-03 Penned Uppercase C



Size Inches:	Size mm:	Stitch Count:
2.26 X 0.95 in.	57.5 X 24.0 mm	751 St.
■ 1. Single Color Design.....		0020

12877-04 Penned Uppercase D



Size Inches:	Size mm:	Stitch Count:
2.33 X 1.25 in.	59.1 X 31.7 mm	1334 St.
■ 1. Single Color Design.....		0020

Note: Some designs in this collection may have been created using unique special stitches and/or techniques. To preserve design integrity when rescaling or rotating designs in your software, always rescale or rotate designs using the handles directly on-screen.

12877-05 Penned Uppercase E

Size Inches:	Size mm:	Stitch Count:
2.49 X 0.80 in.	63.3 X 20.3 mm	787 St.

■ 1. Single Color Design..... 0020



12877-06 Penned Uppercase F

Size Inches:	Size mm:	Stitch Count:
2.50 X 0.66 in.	63.6 X 16.8 mm	786 St.

■ 1. Single Color Design..... 0020



Note: Some designs in this collection may have been created using unique special stitches and/or techniques. To preserve design integrity when rescaling or rotating designs in your software, always rescale or rotate designs using the handles directly on-screen.

12877-07 Penned Uppercase G

Size Inches:	Size mm:	Stitch Count:
2.30 X 0.93 in.	58.4 X 23.6 mm	808 St.

■ 1. Single Color Design..... 0020



12877-08 Penned Uppercase H

Size Inches:	Size mm:	Stitch Count:
2.47 X 0.63 in.	62.8 X 15.9 mm	1055 St.

■ 1. Single Color Design..... 0020



Note: Some designs in this collection may have been created using unique special stitches and/or techniques. To preserve design integrity when rescaling or rotating designs in your software, always rescale or rotate designs using the handles directly on-screen.

12877-09 Penned Uppercase I

Size Inches:	Size mm:	Stitch Count:
2.22 X 0.47 in.	56.5 X 12.1 mm	606 St.

■ 1. Single Color Design..... 0020



12877-10 Penned Uppercase J

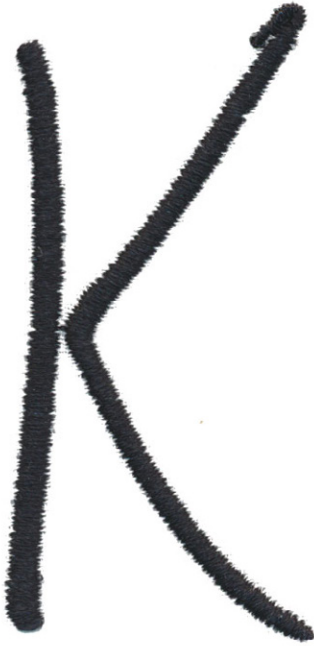
Size Inches:	Size mm:	Stitch Count:
2.35 X 0.83 in.	59.7 X 21.1 mm	672 St.

■ 1. Single Color Design..... 0020



Note: Some designs in this collection may have been created using unique special stitches and/or techniques. To preserve design integrity when rescaling or rotating designs in your software, always rescale or rotate designs using the handles directly on-screen.

12877-11 Penned Uppercase K



Size Inches:	Size mm:	Stitch Count:
2.45 X 1.24 in.	62.3 X 31.5 mm	1090 St.
■ 1. Single Color Design..... 0020		

12877-12 Penned Uppercase L



Size Inches:	Size mm:	Stitch Count:
2.54 X 0.77 in.	64.6 X 19.6 mm	640 St.
■ 1. Single Color Design..... 0020		

Note: Some designs in this collection may have been created using unique special stitches and/or techniques. To preserve design integrity when rescaling or rotating designs in your software, always rescale or rotate designs using the handles directly on-screen.

12877-13 Penned Uppercase M

Size Inches:	Size mm:	Stitch Count:
2.42 X 1.68 in.	61.5 X 42.7 mm	1681 St.

■ 1. Single Color Design..... 0020



12877-14 Penned Uppercase N

Size Inches:	Size mm:	Stitch Count:
2.46 X 1.36 in.	62.4 X 34.5 mm	1306 St.

■ 1. Single Color Design..... 0020



Note: Some designs in this collection may have been created using unique special stitches and/or techniques. To preserve design integrity when rescaling or rotating designs in your software, always rescale or rotate designs using the handles directly on-screen.

12877-15 Penned Uppercase O

Size Inches:	Size mm:	Stitch Count:
2.21 X 1.06 in.	56.2 X 27.0 mm	1170 St.

■ 1. Single Color Design..... 0020



12877-16 Penned Uppercase P

Size Inches:	Size mm:	Stitch Count:
2.27 X 1.19 in.	57.7 X 30.2 mm	1124 St.

■ 1. Single Color Design..... 0020



Note: Some designs in this collection may have been created using unique special stitches and/or techniques. To preserve design integrity when rescaling or rotating designs in your software, always rescale or rotate designs using the handles directly on-screen.

12877-17 Penned Uppercase Q

Size Inches:	Size mm:	Stitch Count:
2.42 X 1.06 in.	61.4 X 27.0 mm	1462 St.

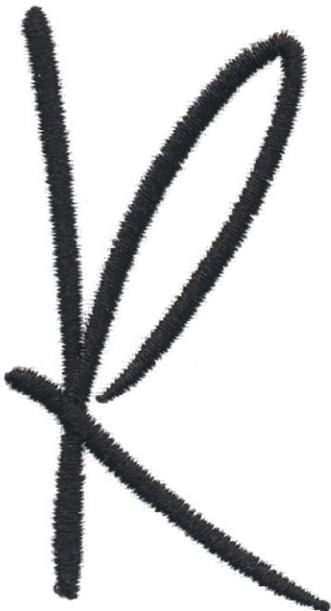
■ 1. Single Color Design..... 0020



12877-18 Penned Uppercase R

Size Inches:	Size mm:	Stitch Count:
2.43 X 1.31 in.	61.8 X 33.3 mm	1377 St.

■ 1. Single Color Design..... 0020



Note: Some designs in this collection may have been created using unique special stitches and/or techniques. To preserve design integrity when rescaling or rotating designs in your software, always rescale or rotate designs using the handles directly on-screen.

12877-19 Penned Uppercase S



Size Inches:	Size mm:	Stitch Count:
2.62 X 0.89 in.	66.6 X 22.6 mm	1065 St.
■ 1. Single Color Design..... 0020		

12877-20 Penned Uppercase T



Size Inches:	Size mm:	Stitch Count:
2.48 X 1.34 in.	63.1 X 34.1 mm	721 St.
■ 1. Single Color Design..... 0020		

Note: Some designs in this collection may have been created using unique special stitches and/or techniques. To preserve design integrity when rescaling or rotating designs in your software, always rescale or rotate designs using the handles directly on-screen.

12877-21 Penned Uppercase U

Size Inches:	Size mm:	Stitch Count:
2.42 X 1.15 in.	61.5 X 29.2 mm	1289 St.

■ 1. Single Color Design..... 0020



12877-22 Penned Uppercase V

Size Inches:	Size mm:	Stitch Count:
2.70 X 0.75 in.	68.6 X 19.1 mm	990 St.

■ 1. Single Color Design..... 0020



Note: Some designs in this collection may have been created using unique special stitches and/or techniques. To preserve design integrity when rescaling or rotating designs in your software, always rescale or rotate designs using the handles directly on-screen.

12877-23 Penned Uppercase W

Size Inches:	Size mm:	Stitch Count:
2.75 X 1.48 in.	69.9 X 37.6 mm	1402 St.

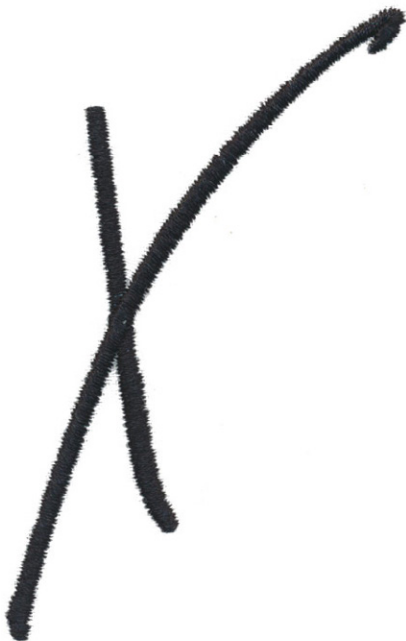
■ 1. Single Color Design..... 0020



12877-24 Penned Uppercase X

Size Inches:	Size mm:	Stitch Count:
3.00 X 1.67 in.	76.3 X 42.5 mm	1135 St.

■ 1. Single Color Design..... 0020



Note: Some designs in this collection may have been created using unique special stitches and/or techniques. To preserve design integrity when rescaling or rotating designs in your software, always rescale or rotate designs using the handles directly on-screen.

12877-25 Penned Uppercase Y

Size Inches:	Size mm:	Stitch Count:
2.35 X 0.87 in.	59.8 X 22.1 mm	1093 St.

■ 1. Single Color Design..... 0020



12877-26 Penned Uppercase Z

Size Inches:	Size mm:	Stitch Count:
2.36 X 1.08 in.	59.9 X 27.4 mm	941 St.

■ 1. Single Color Design..... 0020



Note: Some designs in this collection may have been created using unique special stitches and/or techniques. To preserve design integrity when rescaling or rotating designs in your software, always rescale or rotate designs using the handles directly on-screen.

12877-27 Penned Lowercase a

Size Inches:	Size mm:	Stitch Count:
0.85 X 0.60 in.	21.6 X 15.3 mm	511 St.

■ 1. Single Color Design..... 0020



12877-28 Penned Lowercase b

Size Inches:	Size mm:	Stitch Count:
2.51 X 0.51 in.	63.6 X 12.9 mm	893 St.

■ 1. Single Color Design..... 0020



Note: Some designs in this collection may have been created using unique special stitches and/or techniques. To preserve design integrity when rescaling or rotating designs in your software, always rescale or rotate designs using the handles directly on-screen.

12877-29 Penned Lowercase c

Size Inches:	Size mm:	Stitch Count:
0.68 X 0.56 in.	17.2 X 14.3 mm	330 St.

■ 1. Single Color Design..... 0020



12877-30 Penned Lowercase d

Size Inches:	Size mm:	Stitch Count:
3.08 X 0.90 in.	78.4 X 22.8 mm	1228 St.

■ 1. Single Color Design..... 0020



Note: Some designs in this collection may have been created using unique special stitches and/or techniques. To preserve design integrity when rescaling or rotating designs in your software, always rescale or rotate designs using the handles directly on-screen.

12877-31 Penned Lowercase e

Size Inches:	Size mm:	Stitch Count:
0.74 X 0.33 in.	18.9 X 8.4 mm	325 St.

■ 1. Single Color Design..... 0020



12877-32 Penned Lowercase f

Size Inches:	Size mm:	Stitch Count:
2.92 X 0.70 in.	74.3 X 17.9 mm	1001 St.

■ 1. Single Color Design..... 0020



Note: Some designs in this collection may have been created using unique special stitches and/or techniques. To preserve design integrity when rescaling or rotating designs in your software, always rescale or rotate designs using the handles directly on-screen.

12877-33 Penned Lowercase g

Size Inches:	Size mm:	Stitch Count:
2.10 X 0.55 in.	53.3 X 13.9 mm	718 St.

■ 1. Single Color Design..... 0020



12877-34 Penned Lowercase h

Size Inches:	Size mm:	Stitch Count:
2.40 X 0.83 in.	60.8 X 21.0 mm	808 St.

■ 1. Single Color Design..... 0020



Note: Some designs in this collection may have been created using unique special stitches and/or techniques. To preserve design integrity when rescaling or rotating designs in your software, always rescale or rotate designs using the handles directly on-screen.

12877-35 Penned Lowercase i

Size Inches:	Size mm:	Stitch Count:
2.56 X 0.48 in.	64.9 X 12.3 mm	544 St.

■ 1. Single Color Design..... 0020



12877-36 Penned Lowercase j

Size Inches:	Size mm:	Stitch Count:
1.54 X 0.16 in.	39.1 X 4.2 mm	317 St.

■ 1. Single Color Design..... 0020



Note: Some designs in this collection may have been created using unique special stitches and/or techniques. To preserve design integrity when rescaling or rotating designs in your software, always rescale or rotate designs using the handles directly on-screen.

12877-37 Penned Lowercase k

Size Inches:	Size mm:	Stitch Count:
2.56 X 0.46 in.	65.0 X 11.7 mm	747 St.

■ 1. Single Color Design..... 0020



12877-38 Penned Lowercase l

Size Inches:	Size mm:	Stitch Count:
2.80 X 0.55 in.	71.2 X 14.1 mm	848 St.

■ 1. Single Color Design..... 0020



Note: Some designs in this collection may have been created using unique special stitches and/or techniques. To preserve design integrity when rescaling or rotating designs in your software, always rescale or rotate designs using the handles directly on-screen.

12877-39 Penned Lowercase m

Size Inches: Size mm: Stitch Count:
1.37 X 0.88 in. 34.8 X 22.3 mm 662 St.

■ 1. Single Color Design..... 0020



12877-40 Penned Lowercase n

Size Inches: Size mm: Stitch Count:
0.91 X 0.57 in. 23.0 X 14.5 mm 346 St.

■ 1. Single Color Design..... 0020



Note: Some designs in this collection may have been created using unique special stitches and/or techniques. To preserve design integrity when rescaling or rotating designs in your software, always rescale or rotate designs using the handles directly on-screen.

12877-41 Penned Lowercase o

Size Inches:	Size mm:	Stitch Count:
0.75 X 0.58 in.	19.0 X 14.7 mm	346 St.

■ 1. Single Color Design..... 0020



12877-42 Penned Lowercase p

Size Inches:	Size mm:	Stitch Count:
2.02 X 0.81 in.	51.3 X 20.6 mm	830 St.

■ 1. Single Color Design..... 0020



Note: Some designs in this collection may have been created using unique special stitches and/or techniques. To preserve design integrity when rescaling or rotating designs in your software, always rescale or rotate designs using the handles directly on-screen.

12877-43 Penned Lowercase q

Size Inches:	Size mm:	Stitch Count:
2.20 X 0.53 in.	55.9 X 13.4 mm	797 St.

■ 1. Single Color Design..... 0020



12877-44 Penned Lowercase r

Size Inches:	Size mm:	Stitch Count:
0.82 X 0.45 in.	20.7 X 11.6 mm	300 St.

■ 1. Single Color Design..... 0020



Note: Some designs in this collection may have been created using unique special stitches and/or techniques. To preserve design integrity when rescaling or rotating designs in your software, always rescale or rotate designs using the handles directly on-screen.

12877-45 Penned Lowercase s

Size Inches:	Size mm:	Stitch Count:
1.48 X 0.61 in.	37.5 X 15.4 mm	632 St.

■ 1. Single Color Design..... 0020



12877-46 Penned Lowercase t

Size Inches:	Size mm:	Stitch Count:
2.09 X 0.72 in.	53.1 X 18.3 mm	577 St.

■ 1. Single Color Design..... 0020



Note: Some designs in this collection may have been created using unique special stitches and/or techniques. To preserve design integrity when rescaling or rotating designs in your software, always rescale or rotate designs using the handles directly on-screen.

12877-47 Penned Lowercase u

Size Inches: Size mm: Stitch Count:
0.81 X 0.69 in. 20.5 X 17.5 mm 497 St.

■ 1. Single Color Design..... 0020



12877-48 Penned Lowercase v

Size Inches: Size mm: Stitch Count:
0.80 X 0.43 in. 20.4 X 11.0 mm 332 St.

■ 1. Single Color Design..... 0020



Note: Some designs in this collection may have been created using unique special stitches and/or techniques. To preserve design integrity when rescaling or rotating designs in your software, always rescale or rotate designs using the handles directly on-screen.

12877-49 Penned Lowercase w

Size Inches: Size mm: Stitch Count:
1.32 X 1.13 in. 33.5 X 28.6 mm 664 St.

■ 1. Single Color Design..... 0020



12877-50 Penned Lowercase x

Size Inches: Size mm: Stitch Count:
1.56 X 1.14 in. 39.7 X 28.9 mm 596 St.

■ 1. Single Color Design..... 0020



Note: Some designs in this collection may have been created using unique special stitches and/or techniques. To preserve design integrity when rescaling or rotating designs in your software, always rescale or rotate designs using the handles directly on-screen.

12877-51 Penned Lowercase y



Size Inches:	Size mm:	Stitch Count:
2.10 X 0.75 in.	53.3 X 19.0 mm	721 St.
■ 1. Single Color Design..... 0020		

12877-52 Penned Lowercase z



Size Inches:	Size mm:	Stitch Count:
2.13 X 0.54 in.	54.1 X 13.8 mm	600 St.
■ 1. Single Color Design..... 0020		