

# NATURE STUDIES



**24**  
Designs

# THREAD LIST



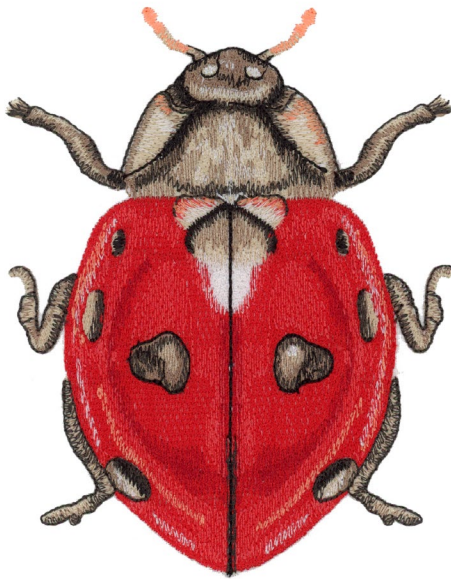
## Isacord Thread Colors

0015 White	0761 Oat	3630 Sweet Boy
0020 Black	0763 Dark Rattan	3645 Prussian Blue
0134 Smoky	0771 Rattan	3710 Blue Bird
0221 Light Brass	0870 Muslin	3713 Cornflower Blue
0230 Easter Dress	0874 Gravel	3761 Winter Sky
0345 Moss	1140 Meringue	3853 Ash Blue
0453 Army Drab	1200 Sunset Orange	5450 Basic Seafoam
0454 Olive Drab	1321 Dark Orange	5500 Limedrop
0465 Umber	1352 Salmon	5650 Spring Frost
0555 Light Sage	1430 Melon	5722 Green Grass
0576 Very Dark Brown	1514 Brick	5730 Apple Green
0640 Parchment	1526 Apple Butter	5740 Mint
0651 Cornsilk	1600 Spanish Tile	5770 Spanish Moss
0660 Vanilla	1704 Candy Apple	5833 Limabean
0672 Baquette	1730 Persimmon	5912 Erin Green
0703 Orange Peel	1753 Strawberries N' Cream	5933 Grasshopper
0721 Antique	1911 Foliage Rose	6011 Tamarack
0741 Wheat	2113 Cranberry	6071 Old Lace
0747 Golden Brown	3622 Imperial Blue	

**Note: One spool of 1000 meter thread is adequate for the project unless otherwise noted.**

Note: Some Designs in this collection may have been created using unique special stitches and/or techniques. To preserve Design integrity when rescaling or rotating Designs in your software, always rescale or rotate Designs using the handles directly on-screen.

## 12920-01 Lady Beetle



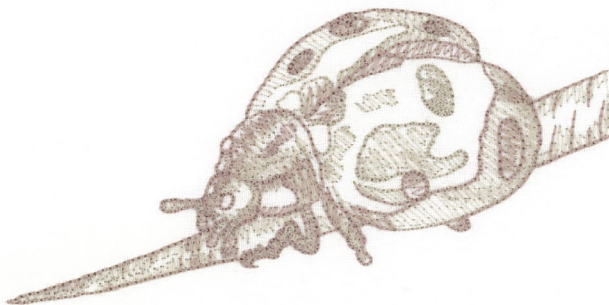
Size Inches:                      Size mm:                      Stitch Count:  
**5.36 X 4.21 in. 136.0 X 106.8 mm 27472 St.**

■	1. Light Brown Detail .....	0761
■	2. Dark Rattan Detail .....	0763
■	3. Red Detail.....	1704
■	4. Light Red Detail.....	1730
■	5. Dark Red Detail .....	1911
■	6. Dark Brown Detail .....	0576
□	7. White Detail .....	0015
■	8. Black Detail .....	0020
■	9. Salmon Detail .....	1352

## 12920-02 Lady Beetle Sketch

Size Inches:                      Size mm:                      Stitch Count:  
**5.00 X 2.34 in. 127.0 X 59.5 mm 5260 St.**

■	1. Light Brown Detail .....	0672
■	2. Brown Detail .....	0874



Note: Some Designs in this collection may have been created using unique special stitches and/or techniques. To preserve Design integrity when rescaling or rotating Designs in your software, always rescale or rotate Designs using the handles directly on-screen.

## 12920-03 Lady Beetle Scientific Names

Size Inches:                      Size mm:                      Stitch Count:  
**3.60 X 4.77 in. 91.4 X 121.2 mm 6539 St.**

- 1. Single Color Design..... 0874

# LADY BEETLE

*Coccinella magnifica*

*Animalia - Arthropoda*

*Insecta - Coleoptera*

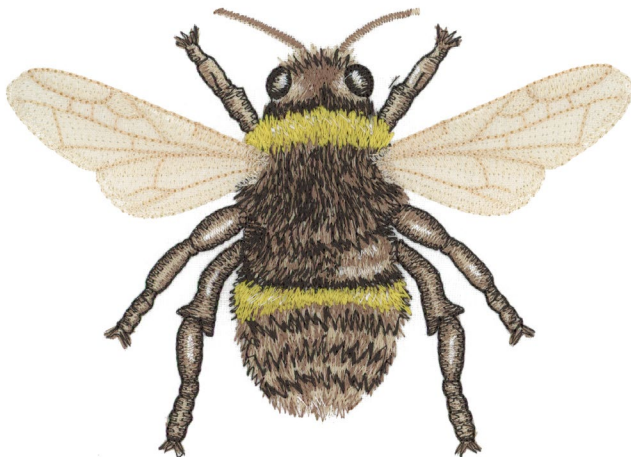
*Polyphaga - Cucujiformia*

*Coccinellaldea - Coccinellidae*

## 12920-04 Bumble Bee

Size Inches:                      Size mm:                      Stitch Count:  
**6.00 X 4.41 in. 152.3 X 112.1 mm 26228 St.**

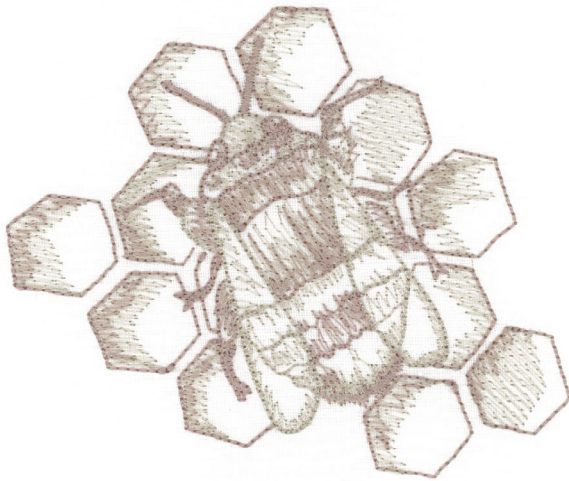
- 1. Light Brown Detail ..... 0761
- 2. Dark Rattan Detail ..... 0763
- 3. Dark Brown Detail ..... 0576
- 4. Brass Detail ..... 0221
- 5. Light Yellow Detail ..... 0230
- 6. Off White Detail ..... 0870
- 7. Meringue Detail ..... 1140
- 8. White Detail ..... 0015



Note: Some Designs in this collection may have been created using unique special stitches and/or techniques. To preserve Design integrity when rescaling or rotating Designs in your software, always rescale or rotate Designs using the handles directly on-screen.

## 12920-05 Bumble Bee Sketch

Size Inches:	Size mm:	Stitch Count:
<b>3.49 X 4.24 in.</b>	<b>88.8 X 107.7 mm</b>	<b>6776 St.</b>
<ul style="list-style-type: none"> <li>— 1. Light Brown Detail ..... 0672</li> <li>— 2. Brown Detail ..... 0874</li> </ul>		



## 12920-06 Bumble Bee Scientific Names

Size Inches:	Size mm:	Stitch Count:
<b>3.09 X 4.27 in.</b>	<b>78.5 X 108.5 mm</b>	<b>5203 St.</b>
<ul style="list-style-type: none"> <li>— 1. Single Color Design..... 0874</li> </ul>		

**BUMBLEBEE**

*Bombus*

*Arthropoda - Insecta*

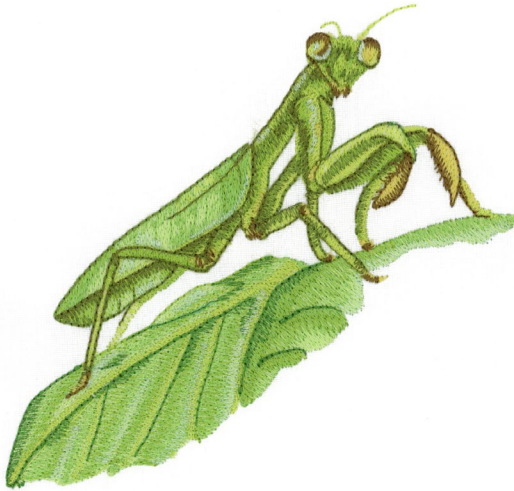
*Hymenoptera - Apidae*

*Bombini*

Note: Some Designs in this collection may have been created using unique special stitches and/or techniques. To preserve Design integrity when rescaling or rotating Designs in your software, always rescale or rotate Designs using the handles directly on-screen.

## 12920-07 Mantis

Size Inches:                      Size mm:                      Stitch Count:  
**4.95 X 4.66 in. 125.7 X 118.4 mm 21263 St.**



1. Mint Detail .....	5740
2. Apple Green Detail .....	5730
3. Erin Green Detail .....	5912
4. Yellow Green Detail .....	6011
5. Medium Green Detail .....	5722
6. Green Detail .....	5833
7. Dark Green Detail .....	5933
8. Light Green Detail .....	5770
9. Brass Detail .....	0221
10. Moss Detail .....	0345

## 12920-08 Mantis Sketch

Size Inches:                      Size mm:                      Stitch Count:  
**3.55 X 3.53 in. 90.2 X 89.7 mm 6563 St.**



1. Light Brown Detail .....	0672
2. Brown Detail .....	0874

Note: Some Designs in this collection may have been created using unique special stitches and/or techniques. To preserve Design integrity when rescaling or rotating Designs in your software, always rescale or rotate Designs using the handles directly on-screen.

## 12920-09 Mantis Scientific Names

Size Inches:                      Size mm:                      Stitch Count:  
**3.14 X 4.26 in. 79.8 X 108.1 mm 4069 St.**

- 1. Single Color Design..... 0874

**MANTIS**

*Mantodea*

*Animalia - Arthropoda*  
*Insecta - Dictyoptera*  
*Mantodea*

## 12920-10 Luna Moth

Size Inches:                      Size mm:                      Stitch Count:  
**5.52 X 4.16 in. 140.1 X 105.7 mm 16152 St.**

- 1. Mint Detail ..... 5770
- 2. Green Detail ..... 5450
- 3. Light Green Detail ..... 5650
- 4. Light Blue Detail ..... 3761
- 5. Blue Detail ..... 3713
- 6. Lime Detail ..... 5500
- 7. White Detail ..... 0015
- 8. Light Brown Detail ..... 0761
- 9. Antique Detail ..... 0721
- 10. Red Brown Detail ..... 1526
- 11. Yellow Orange Detail ..... 0703
- 12. Dark Brown Detail ..... 0576



Note: Some Designs in this collection may have been created using unique special stitches and/or techniques. To preserve Design integrity when rescaling or rotating Designs in your software, always rescale or rotate Designs using the handles directly on-screen.

## 12920-11 Luna Moth Sketch

Size Inches:	Size mm:	Stitch Count:
<b>3.40 X 3.80 in.</b>	<b>86.3 X 96.5 mm</b>	<b>5325 St.</b>
<ul style="list-style-type: none"> <li>— 1. Light Brown Detail ..... 0672</li> <li>— 2. Brown Detail ..... 0874</li> </ul>		



## 12920-12 Luna Moth Scientific Names

Size Inches:	Size mm:	Stitch Count:
<b>3.48 X 4.28 in.</b>	<b>88.3 X 108.8 mm</b>	<b>5275 St.</b>
<ul style="list-style-type: none"> <li>— 1. Single Color Design..... 0874</li> </ul>		

**LUNA MOTH**

*Actias luna*

*Animalia - Arthropoda*

*Insecta - Lepidoptera*

*Saturniidae - Actias*

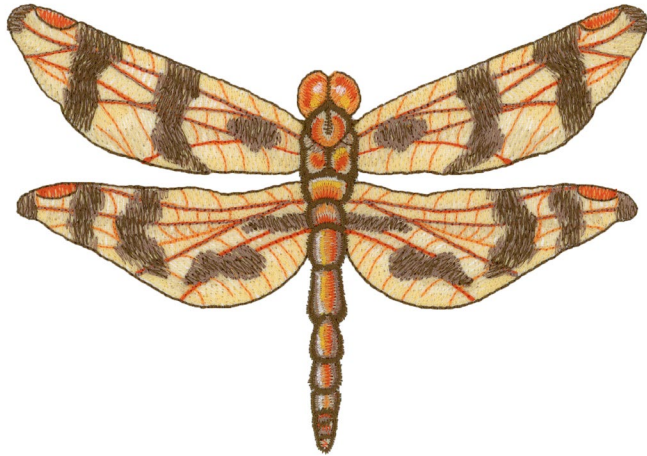
*A. luna*



Note: Some Designs in this collection may have been created using unique special stitches and/or techniques. To preserve Design integrity when rescaling or rotating Designs in your software, always rescale or rotate Designs using the handles directly on-screen.

## 12920-13 Halloween Pennant

Size Inches:                      Size mm:                      Stitch Count:  
**6.51 X 4.61 in. 165.2 X 117.1 mm 25472 St.**



- 1. Light Yellow Detail ..... 0640
- 2. Tan Detail ..... 0771
- 3. Orange Detail ..... 1200
- 4. Dark Orange Detail..... 1321
- 5. Dark Rattan Detail ..... 0763
- 6. Golden Brown Detail ..... 0747
- 7. Yellow Orange Detail..... 0703
- 8. White Detail ..... 0015

## 12920-14 Halloween Pennant Sketch

Size Inches:                      Size mm:                      Stitch Count:  
**4.19 X 3.25 in. 106.5 X 82.6 mm 5392 St.**



- 1. Light Brown Detail ..... 0672
- 2. Brown Detail ..... 0874

Note: Some Designs in this collection may have been created using unique special stitches and/or techniques. To preserve Design integrity when rescaling or rotating Designs in your software, always rescale or rotate Designs using the handles directly on-screen.

## 12920-15 Halloween Pennant Scientific Names

Size Inches:                      Size mm:                      Stitch Count:  
**3.49 X 5.33 in. 88.5 X 135.4 mm 7298 St.**

- 1. Single Color Design..... 0874

### *HALLOWEEN PENNANT*

*Colithemis opanina*

*Animalia - Arthropoda*

*Insecta - Odanata*

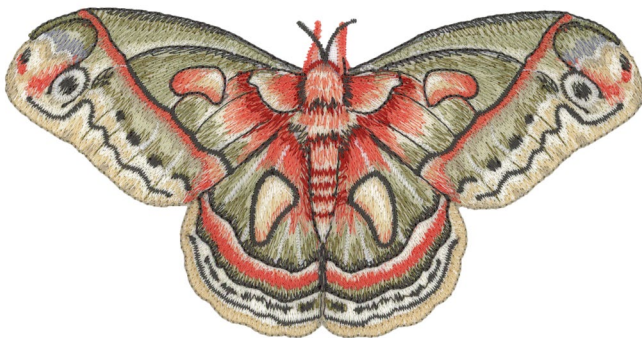
*Trisoptera - Libellulidae*

*Colithemis - Cepanina*

## 12920-16 Cecropia Moth

Size Inches:                      Size mm:                      Stitch Count:  
**6.61 X 3.44 in. 167.8 X 87.3 mm 33874 St.**

- 1. Vanilla Detail..... 0660
- 2. Gray Detail ..... 6071
- 3. Green Detail ..... 0453
- 4. Olive Detail ..... 0454
- 5. Tan Detail ..... 0651
- 6. Blue Detail ..... 3853
- 7. Melon Detail ..... 1430
- 8. Red Detail..... 1600
- 9. Brick Red Detail..... 1514
- 10. Light Sage Detail ..... 0555
- 11. White Detail ..... 0015
- 12. Dark Brown Detail ..... 0134



Note: Some Designs in this collection may have been created using unique special stitches and/or techniques. To preserve Design integrity when rescaling or rotating Designs in your software, always rescale or rotate Designs using the handles directly on-screen.

## 12920-17 Cecropia Moth Sketch

Size Inches:                      Size mm:                      Stitch Count:  
**4.25 X 3.36 in. 108.0 X 85.3 mm 8282 St.**

- 1. Light Brown Detail ..... 0672
- 2. Brown Detail ..... 0874



## 12920-18 Cecropia Moth Scientific Names

Size Inches:                      Size mm:                      Stitch Count:  
**3.59 X 4.51 in. 91.2 X 114.6 mm 6886 St.**

- 1. Single Color Design..... 0874

**CECROPIA MOTH**

*Hyalophora cecropia*

—  
*Animalia - Arthropoda*

*Insecta - Lepidoptera*

*Saturniidae - Hyalophora*

*Cecropia*

Note: Some Designs in this collection may have been created using unique special stitches and/or techniques. To preserve Design integrity when rescaling or rotating Designs in your software, always rescale or rotate Designs using the handles directly on-screen.

## 12920-19 Ulysses Butterfly

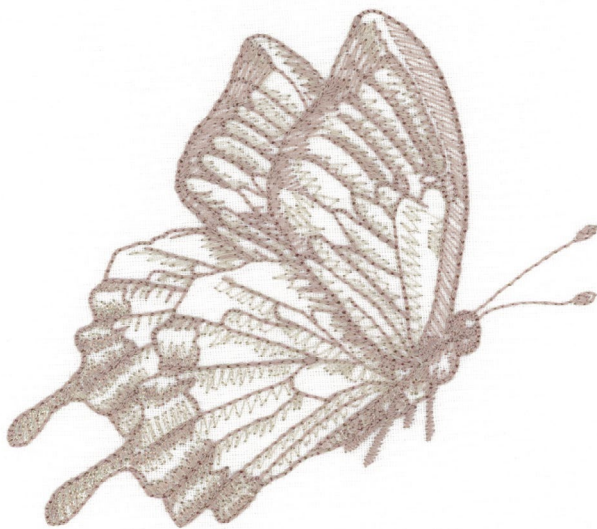
Size Inches:                      Size mm:                      Stitch Count:  
**5.26 X 4.76 in. 133.6 X 120.8 mm 27942 St.**



■	1. Light Sage Detail .....	0555
■	2. Dark Rattan Detail .....	0763
■	3. Light Brown Detail .....	0761
■	4. Dark Green Detail.....	0465
■	5. Blue Detail.....	3710
■	6. Imperial Blue Detail .....	3622
■	7. Light Blue Detail .....	3630
■	8. Dark Brown Detail .....	0576
■	9. Dark Blue Detail .....	3645

## 12920-20 Ulysses Butterfly Sketch

Size Inches:                      Size mm:                      Stitch Count:  
**3.50 X 3.98 in. 88.8 X 101.1 mm 7413 St.**



■	1. Light Brown Detail .....	0672
■	2. Brown Detail.....	0874

Note: Some Designs in this collection may have been created using unique special stitches and/or techniques. To preserve Design integrity when rescaling or rotating Designs in your software, always rescale or rotate Designs using the handles directly on-screen.

## 12920-21 Ulysses Butterfly Scientific Names

Size Inches:                      Size mm:                      Stitch Count:  
**3.51 X 5.47 in. 89.2 X 139.0 mm 7267 St.**

- 1. Single Color Design..... 0874

# ULYSSES BUTTERFLY

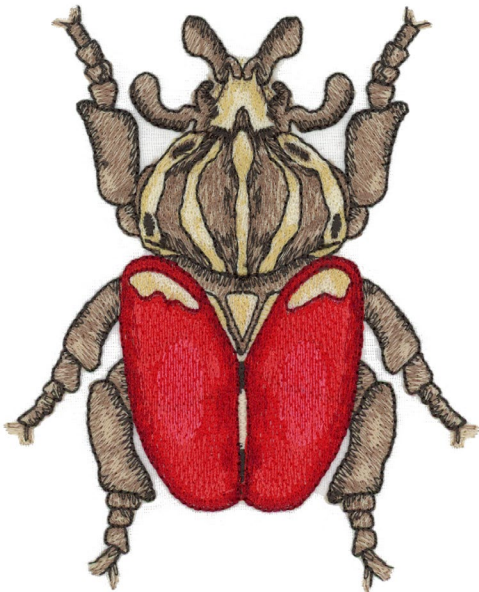
*Papilio Ulysses*

—  
*Animalia - Arthropoda*  
*Insecta - Lepidoptera*  
*Papilionidae - Papilia*  
*P. ulysses*

## 12920-22 Goliathus

Size Inches:                      Size mm:                      Stitch Count:  
**4.81 X 3.94 in. 122.2 X 100.0 mm 26346 St.**

- 1. Light Brown Detail ..... 0761
- 2. Vanilla Detail..... 0660
- 3. Tan Detail ..... 0741
- 4. Dark Rattan Detail ..... 0763
- 5. Dark Brown Detail ..... 0576
- 6. Red Detail..... 1704
- 7. Light Red Detail..... 1730
- 8. Dark Red Detail ..... 1911
- 9. Maroon Detail ..... 2113
- 10. Pink Detail ..... 1753



Note: Some Designs in this collection may have been created using unique special stitches and/or techniques. To preserve Design integrity when rescaling or rotating Designs in your software, always rescale or rotate Designs using the handles directly on-screen.

## 12920-23 Goliathus Sketch

Size Inches:                      Size mm:                      Stitch Count:  
**3.34 X 4.50 in. 84.9 X 114.3 mm    7626 St.**

- 1. Light Brown Detail ..... 0672
- 2. Brown Detail ..... 0874



## 12920-24 Goliathus Scientific Names

Size Inches:                      Size mm:                      Stitch Count:  
**3.47 X 4.31 in. 88.1 X 109.5 mm    5972 St.**

- 1. Single Color Design..... 0874

**GOLIATHUS**

*Goliathus goliatus*

*Animalia - Arthropoda*

*Insecta - Coleoptera*

*Scarabaeidae - Cetoniinae*

*Goliathini - Goliathina*