

## Freestanding Flower Shop



Collection No. 12964  
1 Design/23 Files

# MATERIALS



## Isacord Thread Colors

0015 White

**Note: One spool of 1000 meter thread is adequate for the project unless otherwise noted.**



# MATERIALS



## Stabilizers

- OESD AquaMesh WashAway
- OESD BadgeMaster WashAway
- OESD StabilStick CutAway
- OESD Fiber Form

## Fabrics/Textiles

- OESD Clear Vinyl
- White quilter's cotton
- Cream quilter's cotton

## Notion & Tools

- OESD Grippy GRID
- OESD Expert Embroidery Tape TearAway
- OESD Expert Embroidery Tape WashAway
- OESD Perfect Punch Tool
- OESD Mini MAT
- OESD Alligator Clamps
- OESD Button Clips
- OESD Perfect Embroidery Press Cloth
- Embroidery Needle Sharp 75/11 (FSA)
- Embroidery Needle Ballpoint 80/12 (FSL)

## Isacord Thread Colors

- Per the thread chart
- Match bobbin thread to top thread



# SUMMARY



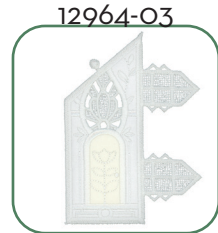
Finished project size:  
17 3/4" H x 6 5/8" L x 6 5/8" W



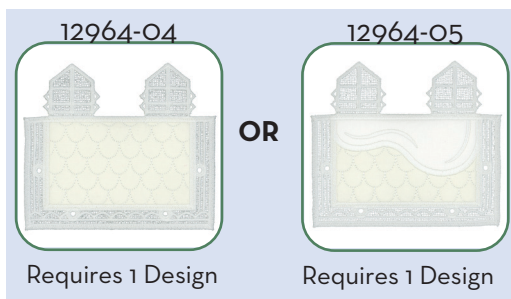
Requires 1 Design



Requires 1 Design

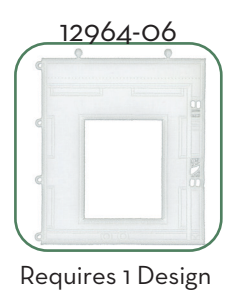


Requires 1 Design



Requires 1 Design

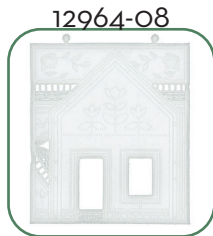
Requires 1 Design



Requires 1 Design



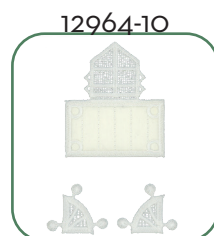
Requires 1 Design



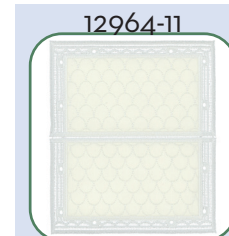
Requires 1 Design



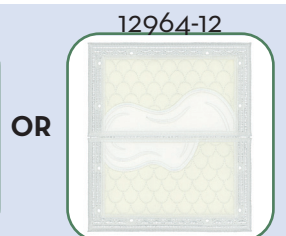
Requires 1 Design



Requires 1 Design



Requires 1 Design



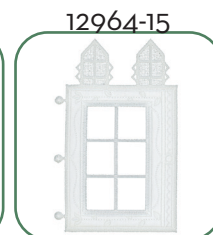
Requires 1 Design



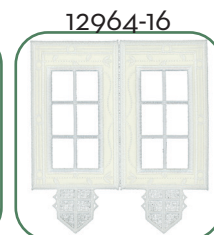
Requires 1 Design



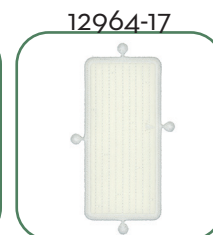
Requires 1 Design



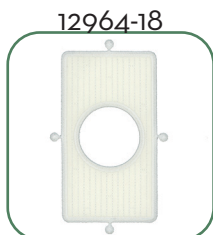
Requires 1 Design



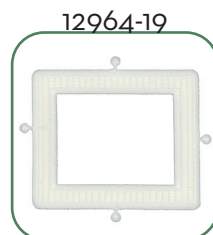
Requires 1 Design



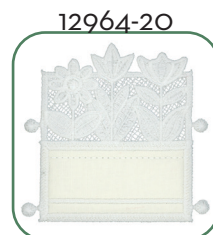
Requires 1 Design



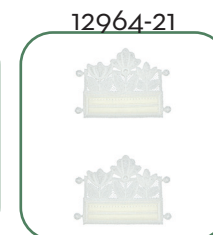
Requires 1 Design



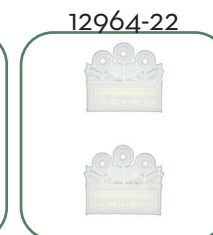
Requires 1 Design



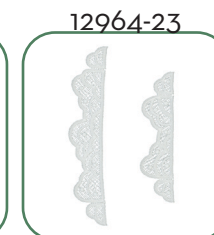
Requires 1 Design



Requires 1 Design



Requires 1 Design



Requires 1 Design

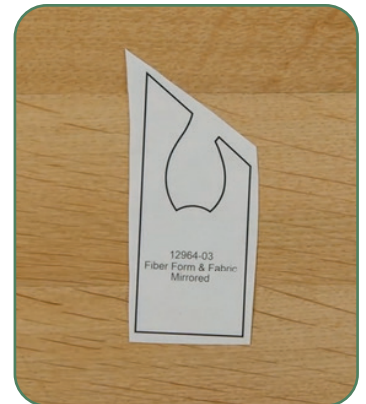
## General Instructions

The freestanding applique instructions, included in the collection, are general instructions. For demonstration purposes, a sample design that best demonstrates the technique is shown. Fabric and thread requirements will vary by design, but the general technique is the same. All designs are stitched with matching thread, top and bobbin.

Note: Some thread colors in instructions have been changed or digitally enhanced for better visibility.

### Step 1

- Print the mirrored version of the templates (at 100% scale or 1:1 ratio) onto the paper side of Applique Fuse and Fix.
- Cut approximately 1/4" - 1/2" outside the printed applique templates.



### Step 2

- Cut the Fiber Form 1/4"-1/2" larger than the applique templates.
- Fuse the trimmed templates to the back of the Fiber Form with the paper side of the printed template up. Hold the iron on the template for 10-15 seconds for a secure fuse.



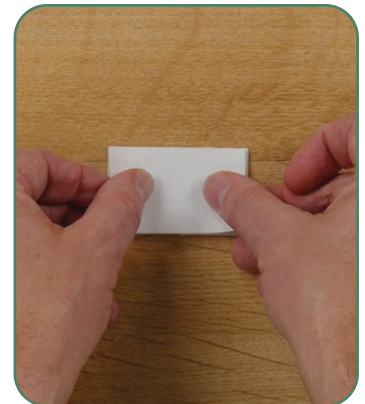
### Step 3

- Trim the Fiber Form on the edge of the black outline.
- Set aside.



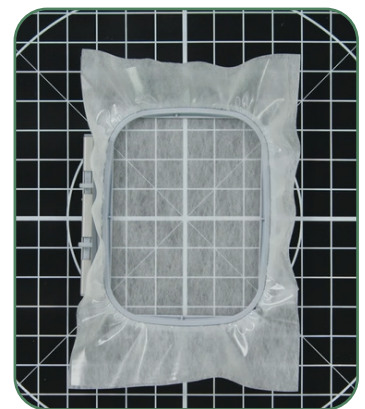
### Step 4

- Adhere one layer of StabilStick CutAway to the wrong side of all applique fabrics to provide stiffness to the finished structure.
- Cut the prepared applique fabrics 1/4"-1/2" larger than the templates that are included at the end of the instructions.



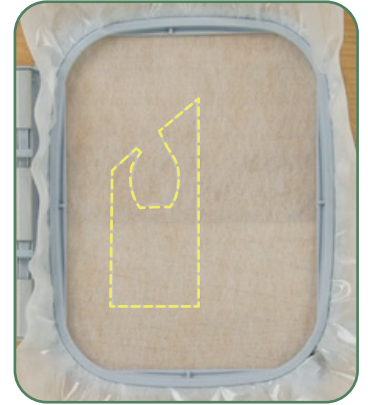
### Step 5

- Hoop one layer of AquaMesh and one layer of BadgeMaster for all designs.



## Step 6

- Load selected design into the machine.
- Example design is 12964-03.
- Thread the machine per the thread chart.
- Place the hoop on the machine.
- Stitch Machine Step 1, Fiber Form/White Fabric Placement Stitch.



## Step 7

- Remove the hoop from the machine, but NOT the project from the hoop.
- Place the hoop on a flat surface.
- On the back of the Fiber Form, use the OESD Perfect Scoring Tool to score and remove the paper backing to reveal the adhesive surface.
- Place the Fiber Form within the placement stitching.
- Finger press to secure.



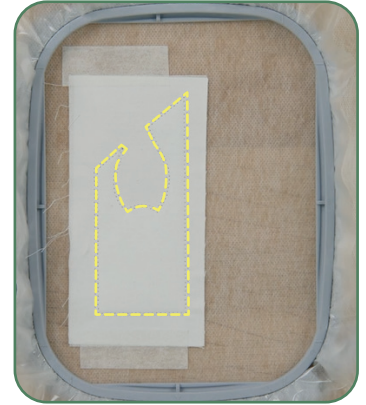
## Step 8

- Completely cover the Fiber Form with the prepared applique fabric.
- Tape in place to secure.



## □ Step 9

- Return the hoop to the machine.
- Stitch Machine Step 2, Cut Line and Tackdown.



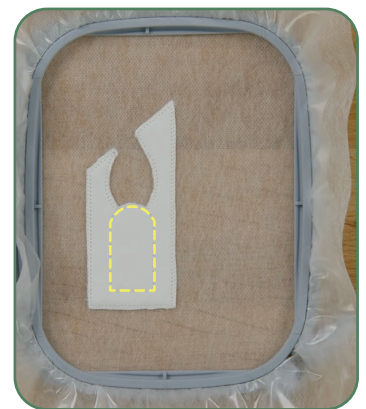
## □ Step 10

- Remove the hoop from the machine, but NOT the project from the hoop.
- Trim the excess fabric as close to the cut line as possible. If the outermost stitches (cut line) are cut, the inner stitches (tackdown) will hold the applique in place.
- Tip: If the stabilizer is cut or a hole is created while trimming the fabric, use OESD Expert Embroidery Tape WashAway as a patch.



## □ Step 11

- Return the hoop to the machine.
- Stitch Machine Step 3, Cream Fabric Placement Stitch.





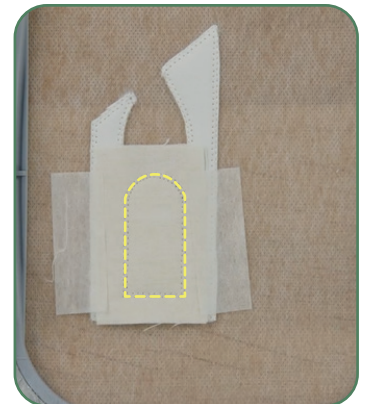
## □ Step 12

- Remove the hoop from the machine, but NOT the project from the hoop.
- Place the hoop on a flat surface.
- Completely cover the placement stitch with the prepared applique fabric.
- Tape in place to secure.



## □ Step 13

- Return the hoop to the machine.
- Stitch Machine Step 4, Cut Line and Tackdown.



## □ Step 14

- Remove the hoop from the machine, but NOT the project from the hoop.
- Trim the excess fabric as close to the cut line as possible.



## Step 15

- Return the hoop to the machine.
- Stitch the remaining machine steps per the thread chart with matching bobbin thread.



## Step 16

- When the design is complete, remove the project from the hoop and trim the stabilizer 1/4" - 1/2" outside the design.



# GENERAL FREESTANDING LACE GUIDE



## DESIGNS

- **12964-10**
- **12964-23**

## Stabilizer

- OESD AquaMesh
- OESD BadgeMaster

## Notion/Tools

- 80/12 Embroidery Ballpoint Titanium needle for extended needle life
- OESD Alligator Clamps
- OESD Button Clips
- OESD Perfect Point and Press Tool

## Isacord Thread Colors

- All OESD designs are digitized with Isacord 40 wt. polyester thread as the top thread and in the bobbin.
- Refer to the thread chart for color specifications.
- Match bobbin thread color to the top thread.

## Instructions

### Step 1 - Hoop

For FSL structures, hoop one layer of OESD AquaMesh and one layer of OESD BadgeMaster. BadgeMaster contains more starch so, combined with the AquaMesh, the lace is more rigid. For other FSL, where a softer lace is desired, hoop two layers of AquaMesh.

### Step 2 - Embroider

Stitch the design per the thread chart with matching thread in the bobbin at each color change. When complete, remove from the hoop and trim away excess stabilizer about 1/4"-1/2" from the stitching.

### Step 3 - Rinse

Rinse remaining stabilizer out in warm running water. For stiffer lace and FSL structures, DO NOT rinse away all of the stabilizer. The lace should be just slightly tacky. For softer lace, rinse until all traces of the stabilizer is removed.

### Step 4 - Dry

Lay right side down flat on a non-stick surface, such as a cookie rack, parchment paper or Teflon sheet. This minimizes the tendency for the lace to curl. Let the pieces dry completely before proceeding with any assembly.

### Step 5 - Press

Once completely dry, press right side down on a OESD Perfect Embroidery Press Cloth.

### Step 6 - Assemble Structure

Note: Specific assembly instructions for a design/collection may be found in the thread chart pdf following the individual design color charts. Lace must be COMPLETELY DRY before assembly. Wetting the buttonettes or eyelets to assemble is not recommended and may result in them stretching and coming "unbuttoned" when dry. Use a pair of OESD Alligator Clamps to insert the buttonettes into the eyelets. Insert the tip of the OESD Alligator Clamps into the eyelet, grasp the buttonette and pull through the eyelet. Alternatively, use a stiletto or tweezers to push the buttonette through the eyelet.

## Helpful Tips

### Limp Lace

If the design is not stiff enough, press the lace pieces on the wrong side while applying spray starch. After ironing, spray again with starch and allow to dry completely. This will stiffen the lace pieces nicely and aid in construction. Or easily re-stiffen by diluting some stabilizer scraps in water (or use liquid starch) and dipping the item in the solution. Lay flat to dry.

### Eyelets Too Small

If any of the eyelets appear closed or too small to penetrate with Alligator Clamps, they may be stretched by inserting the small end of the OESD Perfect Point and Press Tool into the eyelet opening and stretching it open wide enough to accommodate the OESD Alligator Clamps.

### Button Clips

During the assembly process, some structures pull on buttonettes that have already been inserted and could pull them out altogether. Putting a Button Clip on the assembled buttonette will keep it in position during the assembly process. Remove the Button Clips when the assembly is complete.

### Alternative Construction Option

In some cases, the buttonettes may be pulled to the inside of a project, instead of being visible on the outside. Insert the OESD Alligator Clamps through the eyelet from the wrong, or inside, of the lace and grasp the corresponding buttonette. Pull the buttonette to the wrong side of the lace. Pulling the buttonettes to the inside may cause stress on the ones already done. Button clips may be placed on the completed buttonette(s) to prevent them from pulling out of the eyelet.

# ASSEMBLY

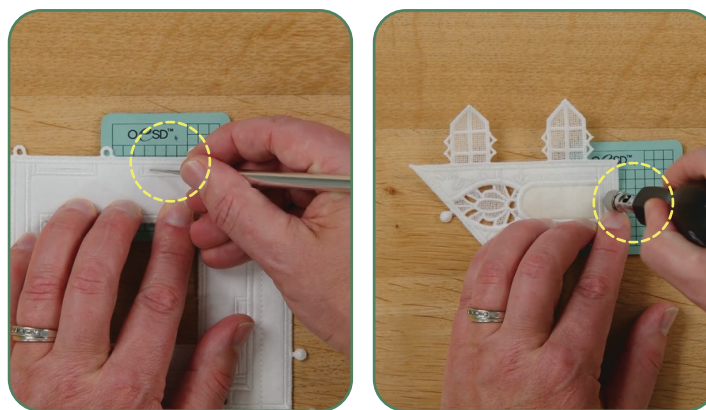
## □ Step 17

- Rinse each piece in warm running water until the design is only slightly tacky.
- Place right side down on a non-stick surface to dry. Parchment paper or a cooling rack work well to prevent curling. Dry completely.
- Once dry, press right side down on a Perfect Embroidery Press Cloth.



## □ Step 18

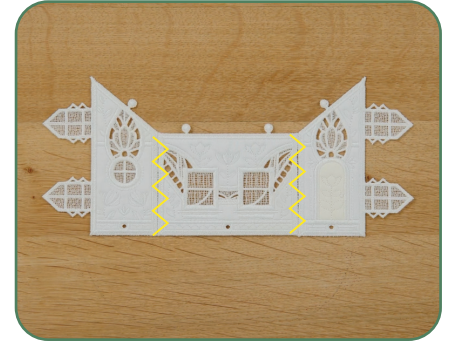
- Before assembly, use the OESD Mini MAT and a craft knife to cut through all the layers of the tab entries.
- Use the OESD Mini MAT and Punch Tool with the 3mm attachment to create the eyelets indicated in the diagram.
- Tip: Take care to not cut the satin stitching.
- Reference the Punch Tool Guide on page 23.



# ASSEMBLY

## □ Step 19

- Line up the Back Wall 1 FSA (12964-01), Side Wall FSA (12964-02), and Front Door Wall FSA (12964-03) to connect.
- Thread the sewing machine with matching thread in the top and bobbin.
- Stitch together using a multi-step zigzag stitch.
- Back stitch at the beginning and end to secure.
- Trim thread tails.
- Fold and press into shape.



## □ Step 20

- Line up the Inner Wall 1 FSA (12964-06), Front Window Wall FSA (12964-07), Inner Wall 2 FSA (12964-08), and Back Wall 2 FSA (12964-09) to connect.
- Stitch together using a multi-step zigzag stitch.
- Back stitch at the beginning and end to secure.
- Trim thread tails.
- Fold and press into shape.



# ASSEMBLY

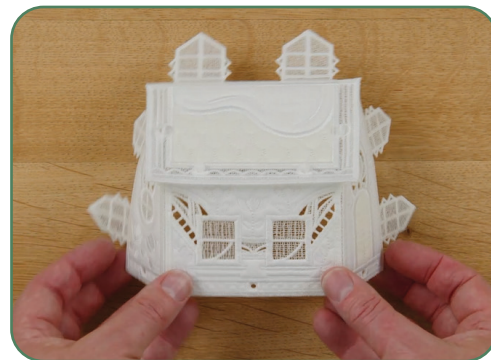
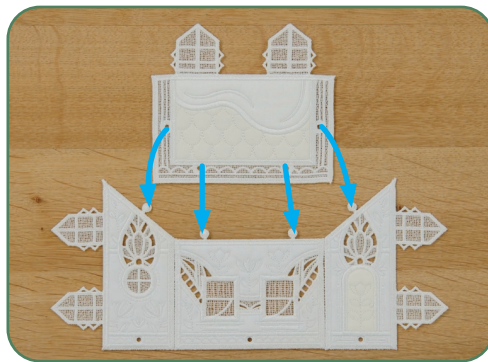
## Step 21

- Line up the Greenhouse Front Wall FSA (12964-13), Greenhouse Side Wall FSA (12964-14), and Greenhouse Back Wall FSA (12964-15) to connect.
- Stitch together using a multi-step zigzag stitch.
- Back stitch at the beginning and end to secure.
- Trim thread tails.
- Fold and press into shape.



## Step 22

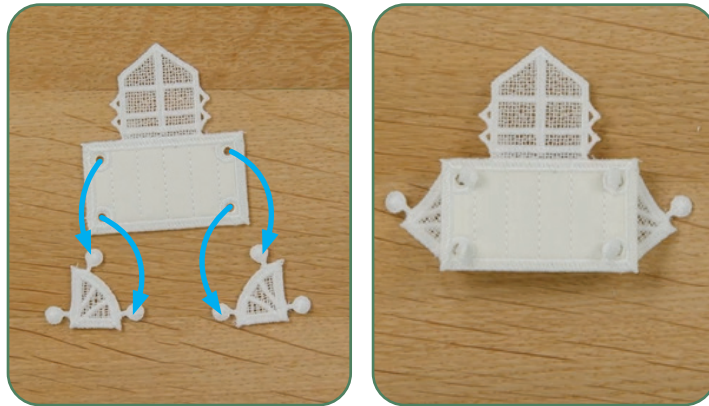
- Match the buttonettes of the side walls to the eyelets of the Side Roof FSA (12964-04) or Side Roof with Snow FSA (12964-05).
- Use Alligator Clamps to pull each buttonette through the corresponding eyelet, using button clips to temporarily hold them in place, as needed.



# ASSEMBLY

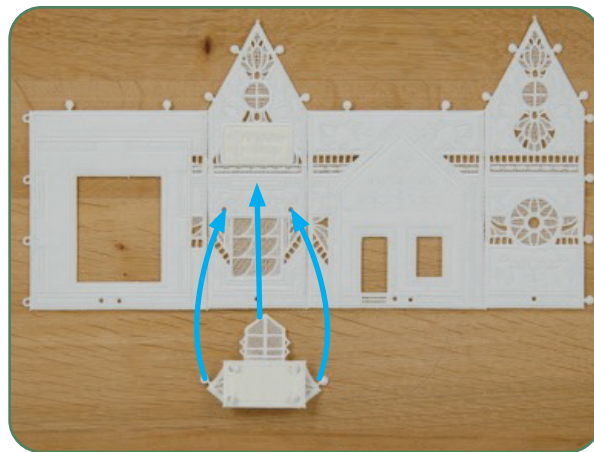
## □ Step 23

- Match the buttonettes of Awning FSA Sides (12964-10) to the eyelets of the Awning.
- Pull each buttonette through the corresponding eyelet.



## □ Step 24

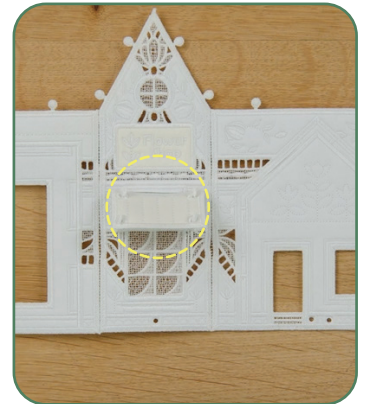
- Insert the locking tab of the Awning FSA (12964-10) into the tab entry of Front Window Wall FSA (12964-07).



# ASSEMBLY

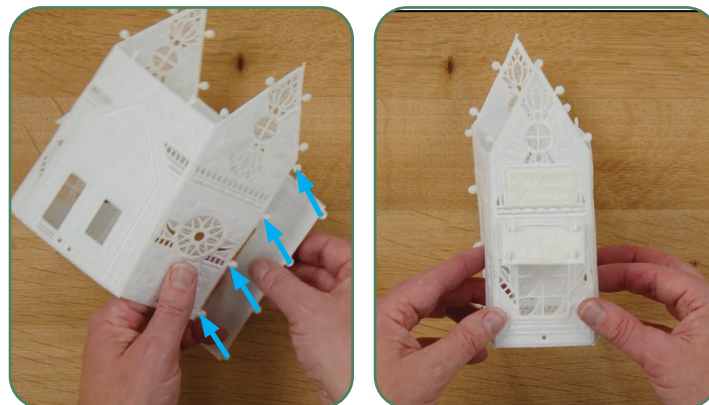
## □ Step 25

- Match the buttonettes of Awning FSA (12964-10) to the eyelets of Front Window Wall FSA (12964-07).
- Pull each buttonette through the corresponding eyelet.



## □ Step 26

- Match the buttonettes of Inner Wall 1 FSA (12964-06) to the eyelets of Back Wall 2 FSA (12964-09).
- Pull each buttonette through the corresponding eyelet.

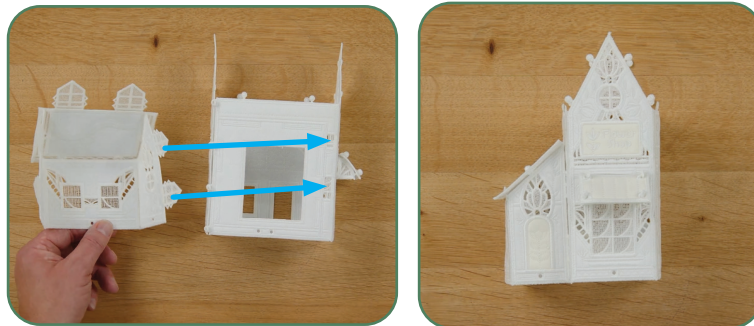




# ASSEMBLY

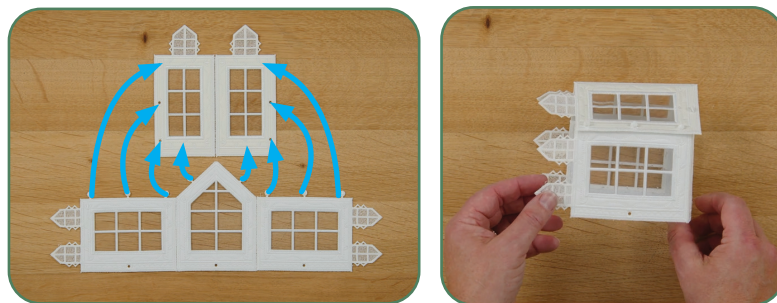
## □ Step 27

- Insert the locking tabs of the side walls and roof assembly into the tab entries of the Inner Wall 1 FSA (12964-06).



## □ Step 28

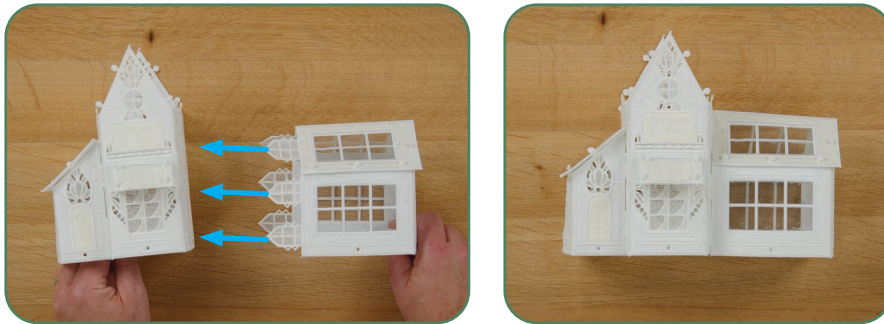
- Match the buttonettes of the greenhouse walls to the eyelets of the Greenhouse Roof FSA (12964-16).
- Pull each buttonette through the corresponding eyelet.



# ASSEMBLY

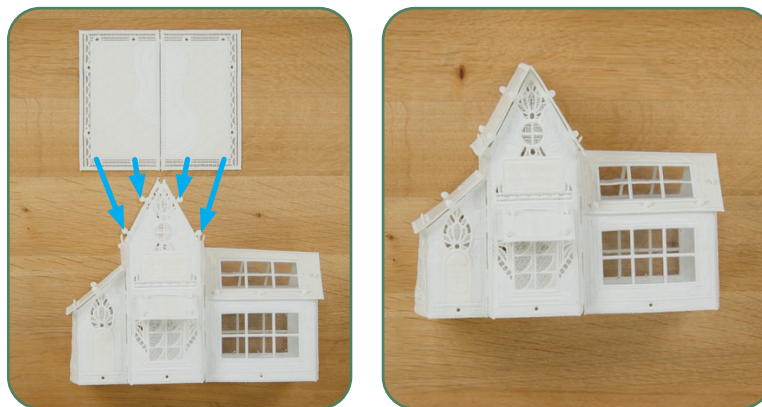
## □ Step 29

- Insert the locking tabs of the greenhouse walls and roof assembly into the tab entries of the Inner Wall 2 FSA (12964-08).



## □ Step 30

- Match the buttonettes of the flower shop walls to the eyelets of the Roof FSA (12964-11) or Roof with Snow FSA (12964-12).
- Pull each buttonette through the corresponding eyelet.



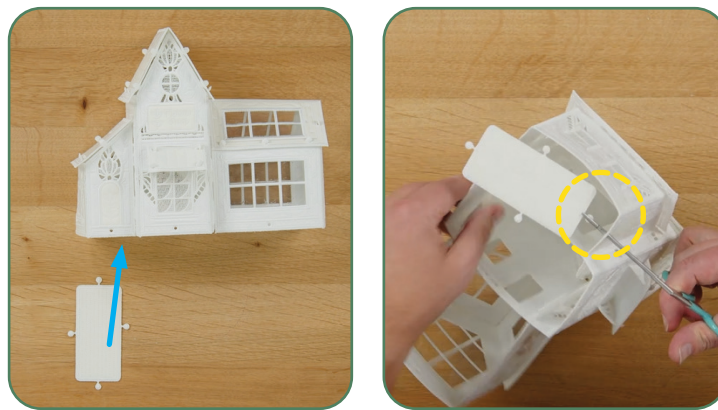
# ASSEMBLY

## □ Step 31

- Match the buttonettes of Foundation 1 FSA (12964-17) to the eyelets of the side walls and Inner Wall 1 FSA (12964-06).

**Note: the marking arrow should point to the flower shop.**

- Pull each buttonette through the corresponding eyelet.

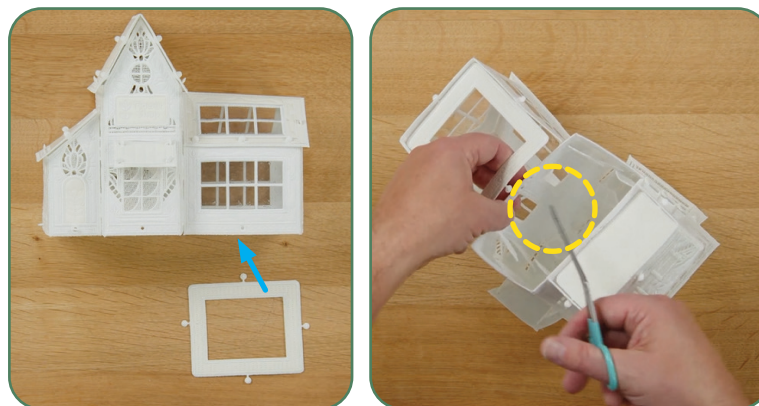


## □ Step 32

- Match the buttonettes of Greenhouse Foundation FSA (12964-19) to the eyelets of the greenhouse walls and Inner Wall 2 FSA (12964-08).

- Note: the marking arrow should point to the flower shop.

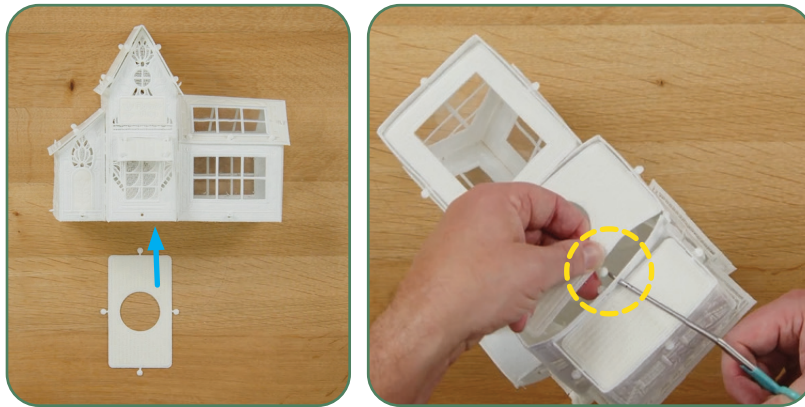
- Pull each buttonette through the corresponding eyelet.



# ASSEMBLY

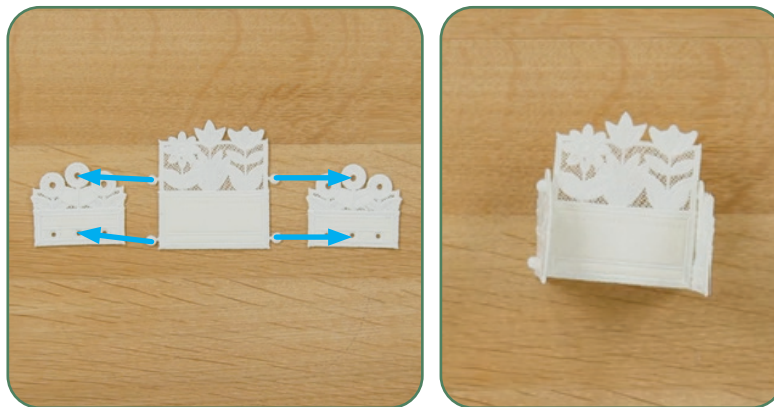
## □ Step 33

- Match the buttonettes of Foundation 2 FSA (12964-18) to the eyelets of the flower shop walls.
- Pull each buttonette through the corresponding eyelet.



## □ Step 34

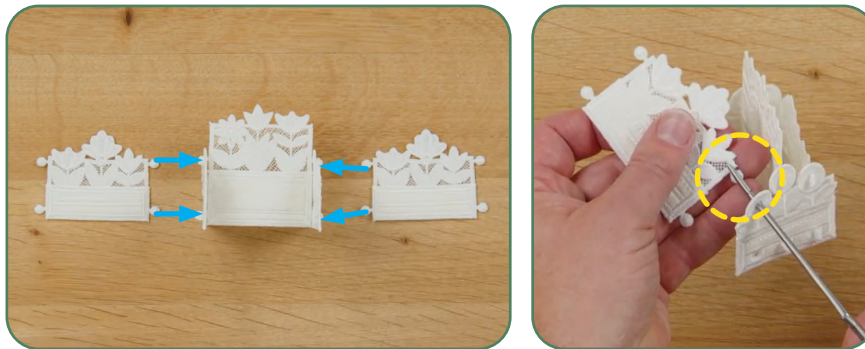
- Match the buttonettes of Flowers 1 FSA (12964-20) to the center eyelets of the two Flowers 3 FSA (12964-22) pieces.
- Pull each buttonette through the corresponding eyelet.



# ASSEMBLY

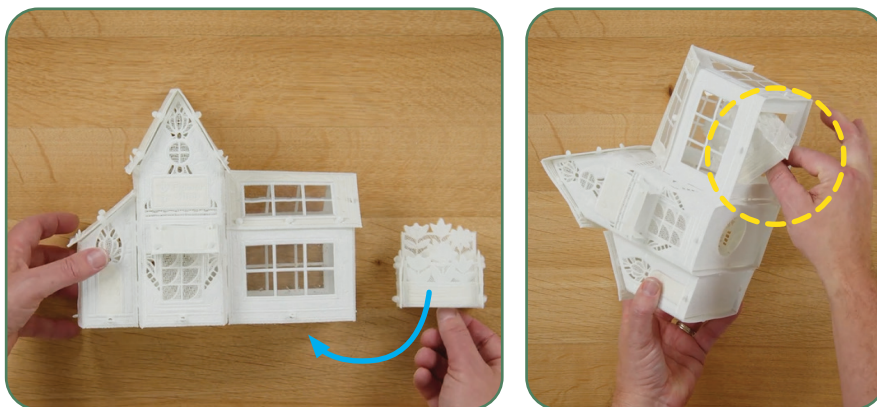
## □ Step 35

- Match the buttonettes of Flowers 2 FSA (12964-21) to the eyelets of the two Flowers 3 FSA (12964-22) pieces.
- Pull each buttonette through the corresponding eyelet.



## □ Step 36

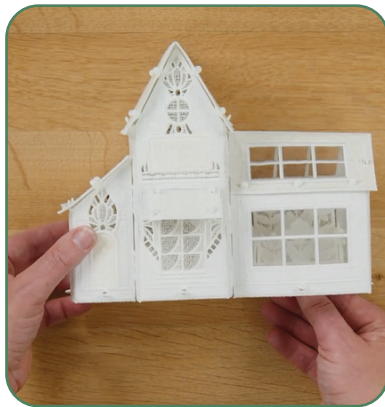
- Insert the assembled flowers through the Greenhouse Foundation FSA (12964-19).



# ASSEMBLY

## Step 37

- The project is complete. Enjoy!



## Step 38

- Add Tealights to create glow.



# PUNCH TOOL GUIDES



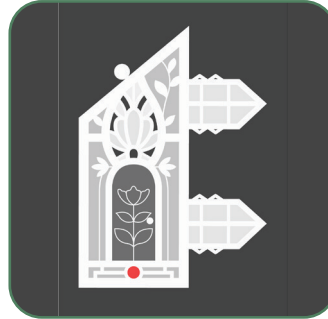
12964-01



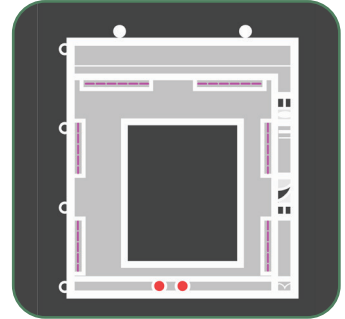
12964-02



12964-03



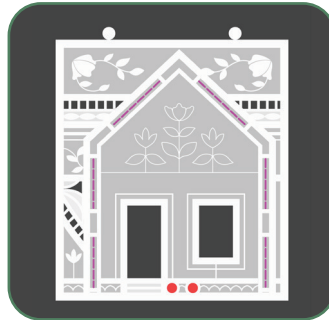
12964-06



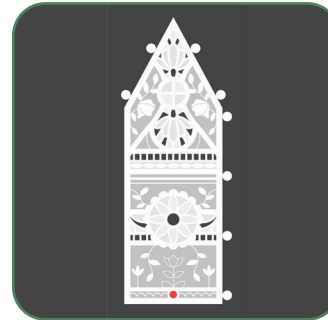
12964-07



12964-08



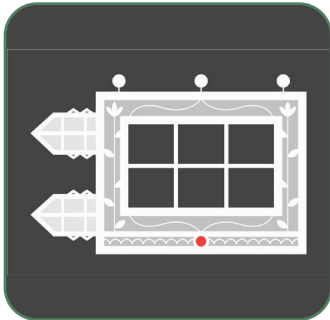
12964-09



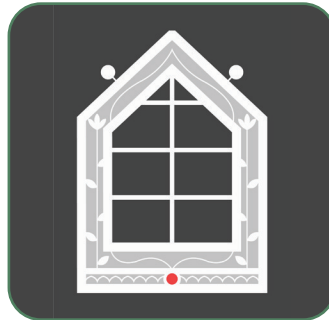
12964-10



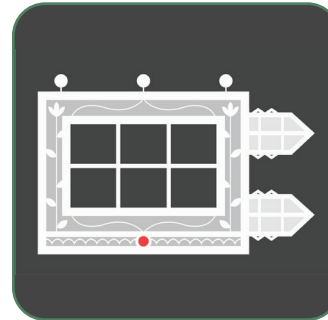
12964-13



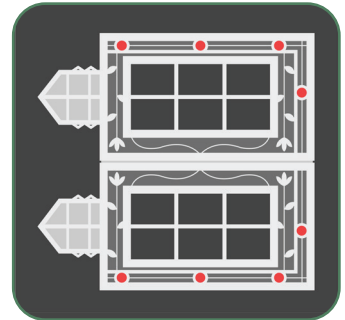
12964-14



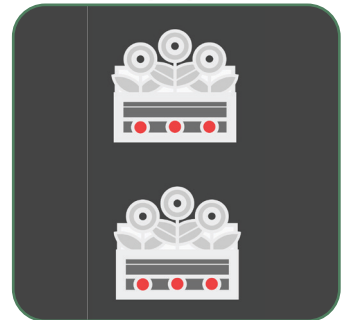
12964-15



12964-16



12964-22



= 2 MM

= 3 MM

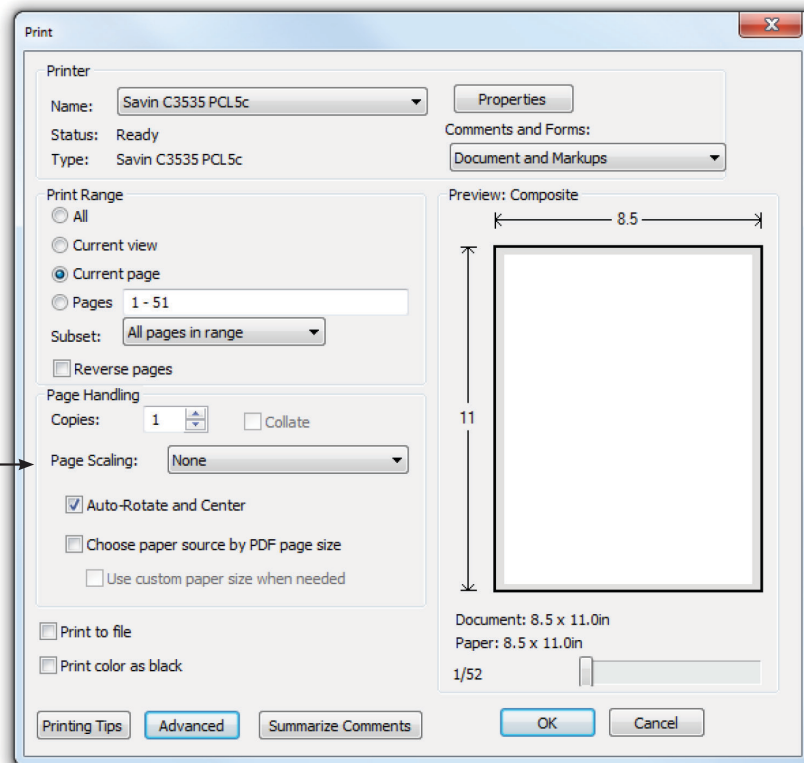
= 4 MM

CRAFT KNIFE



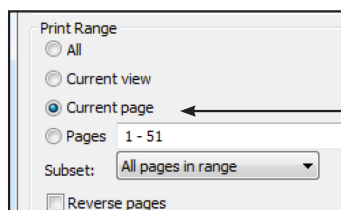
## ATTENTION

When printing this document, any page scaling or page fitting options in your print dialog box must be turned OFF or set to NONE so that your files will print out at their actual size. Images not printed at actual size will not function as intended.



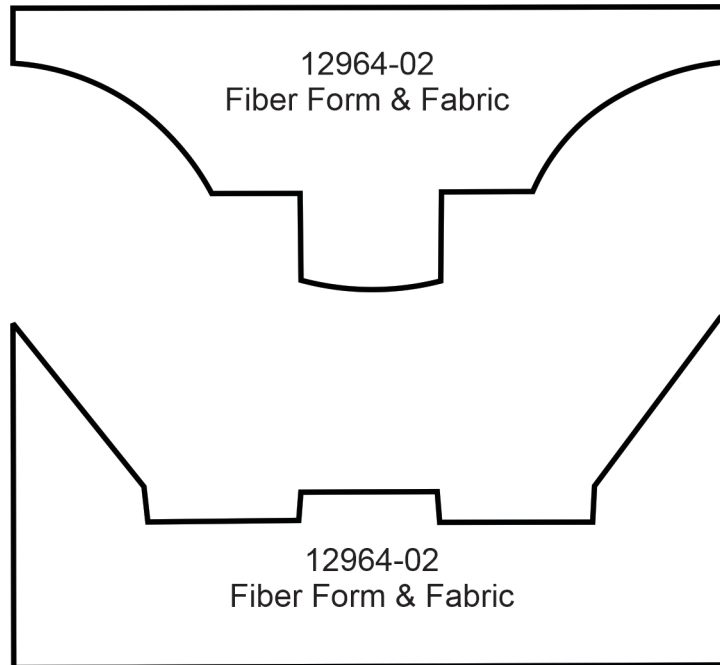
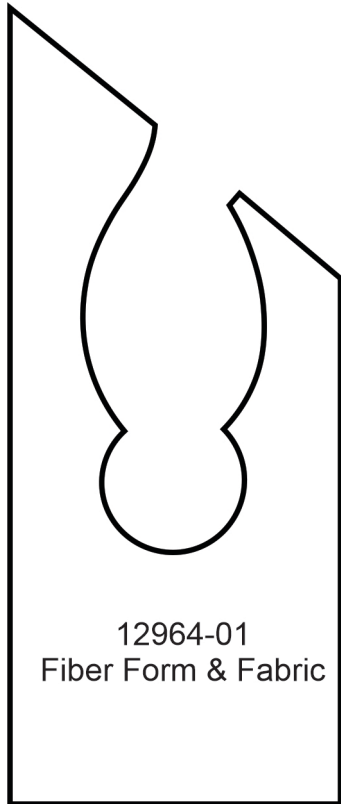
## TO SAVE PAPER

Only print the desired image by navigating to the image's page, go to File > Print and select "Current page" in the print dialog box. Repeat for each desired image.

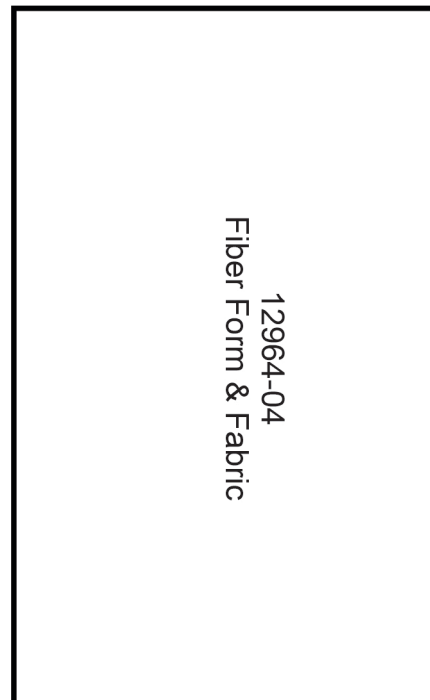
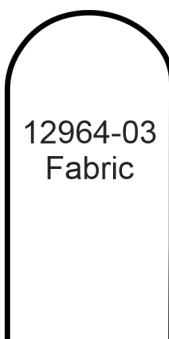
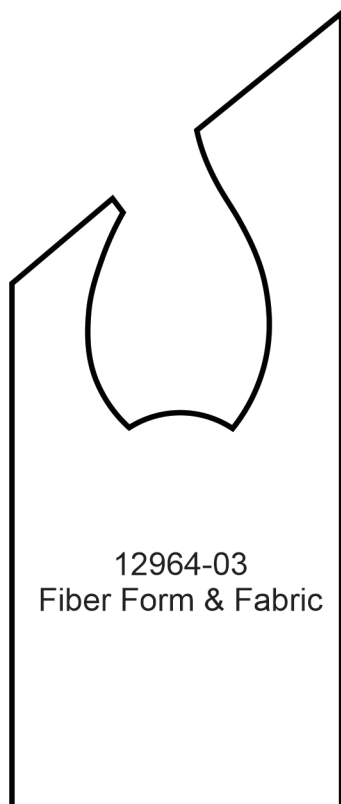




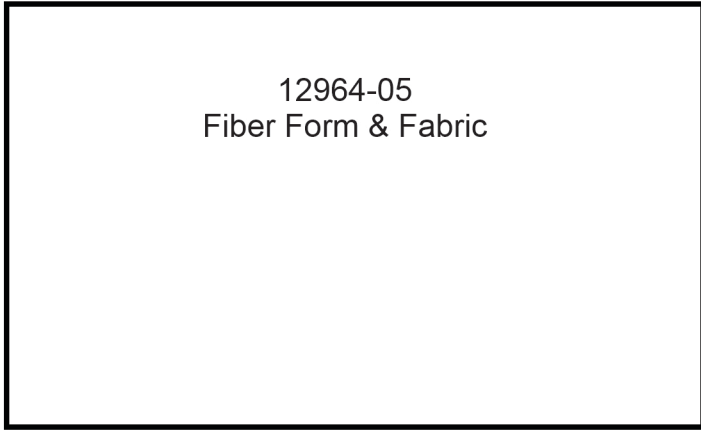
# APPLIQUE PATTERNS



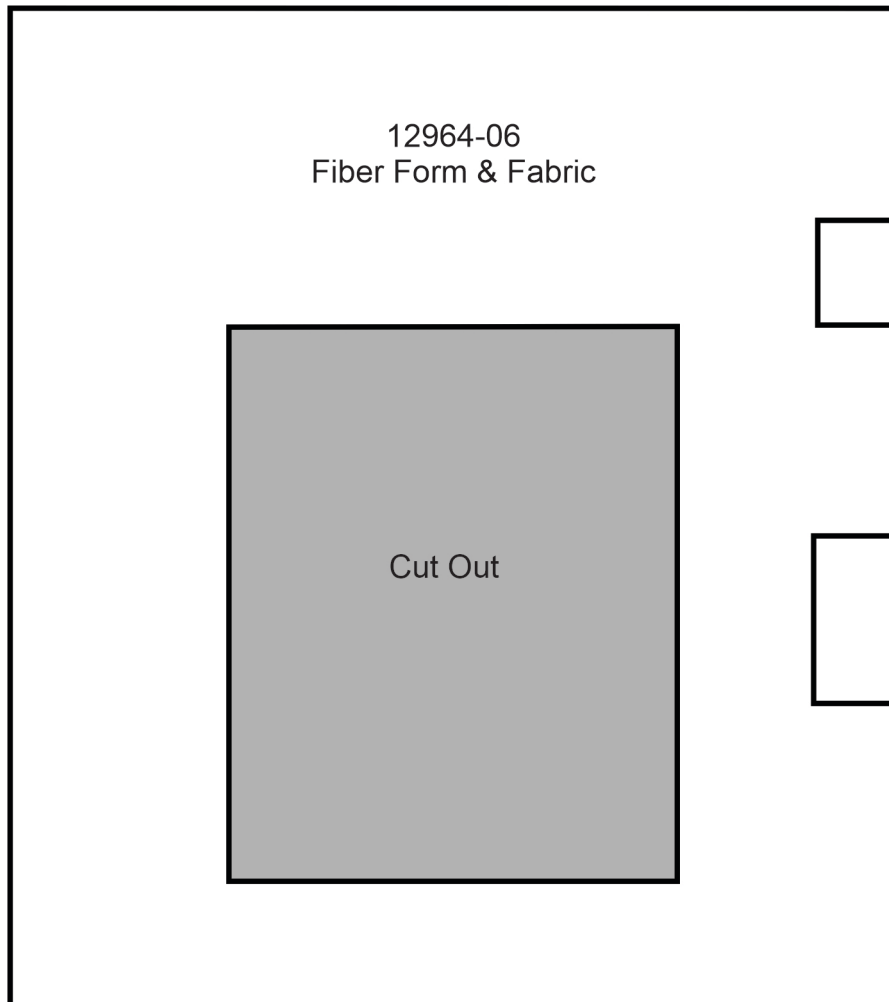
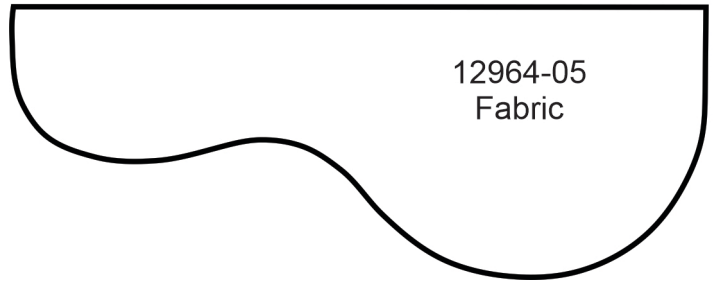
Print at 100%. No scaling. This box measures 1" x 1". Use the box as an accuracy guide when printing templates.



# APPLIQUE PATTERNS

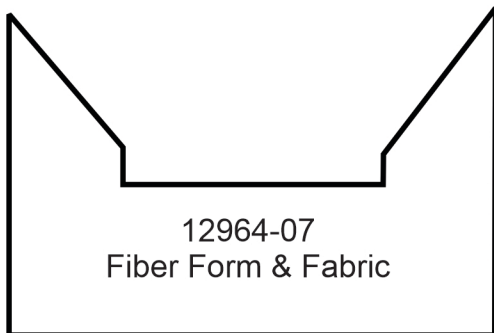
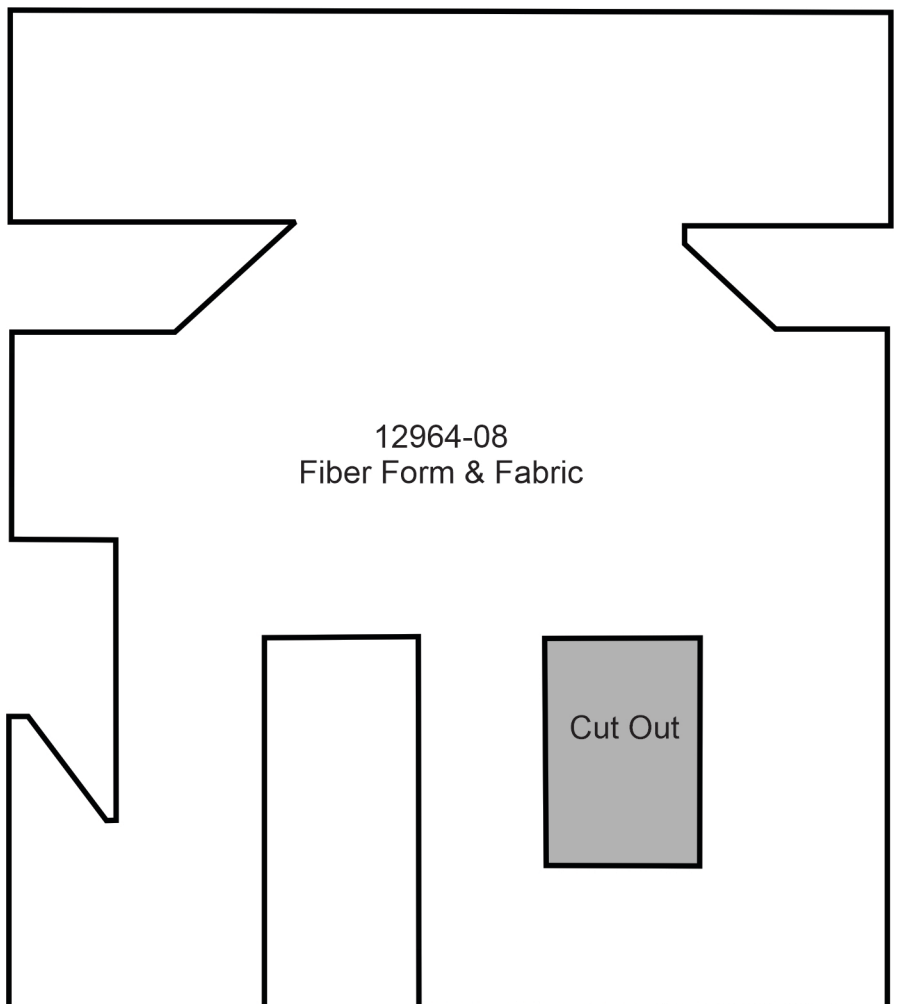
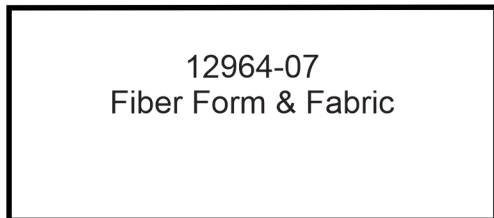
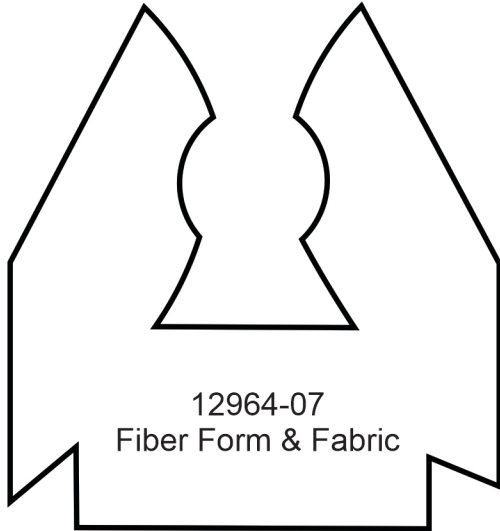


Print at 100%. No scaling. This box measures 1" x 1". Use the box as an accuracy guide when printing templates.



# APPLIQUE PATTERNS

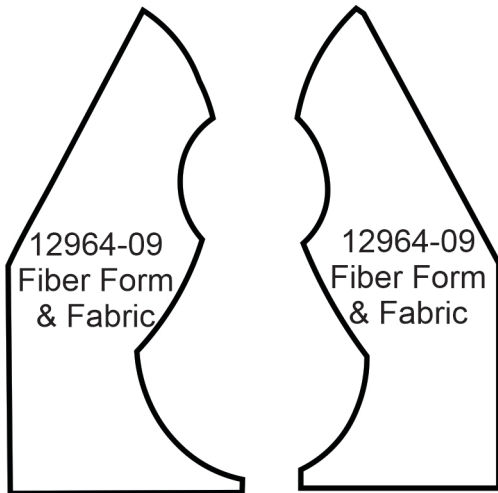
Print at 100%. No scaling. This box measures 1" x 1". Use the box as an accuracy guide when printing templates.



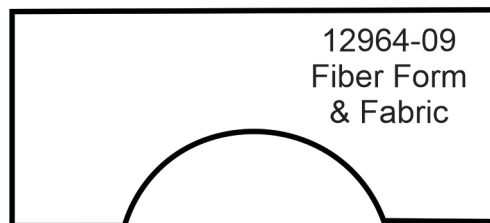
# APPLIQUE PATTERNS

Print at 100%. No scaling. This box measures 1" x 1". Use the box as an accuracy guide when printing templates.

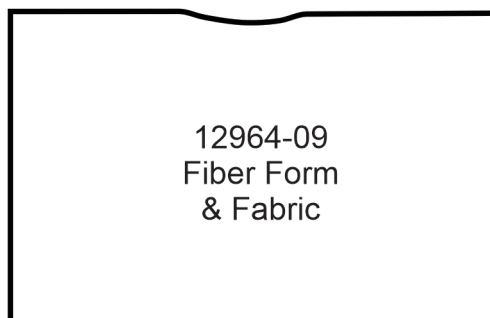
12964-10  
Fiber Form  
& Fabric



12964-11  
Fiber Form  
& Fabric



12964-11  
Fiber Form  
& Fabric



# APPLIQUE PATTERNS

Print at 100%. No scaling. This box measures 1" x 1". Use the box as an accuracy guide when printing templates.

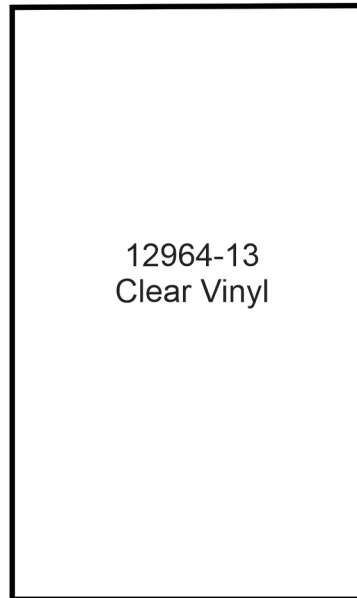
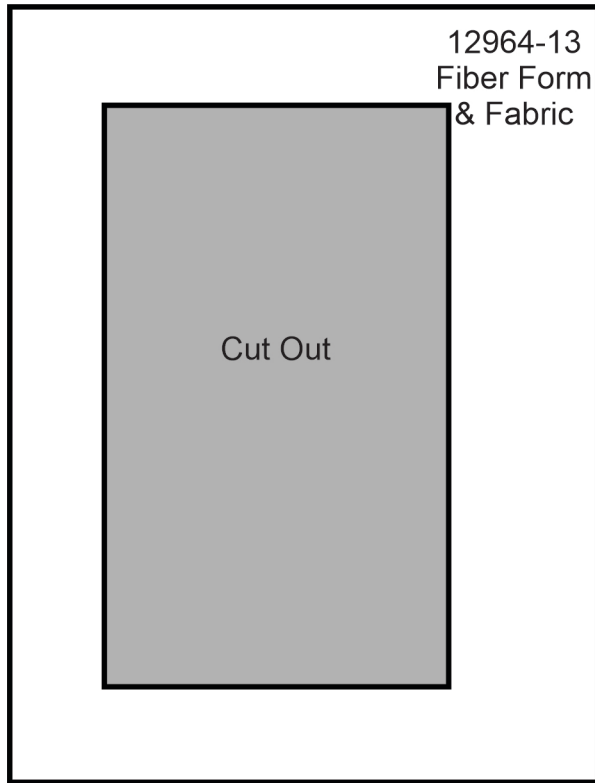
12964-12  
Fiber Form  
& Fabric

12964-12  
Fiber Form  
& Fabric

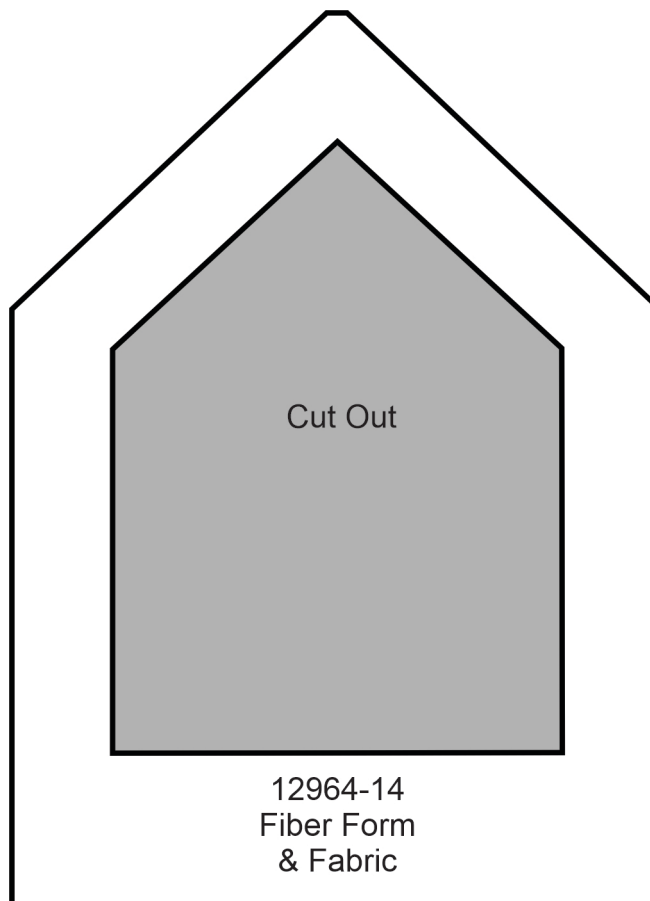
12964-12  
Fabric

12964-12  
Fabric

# APPLIQUE PATTERNS



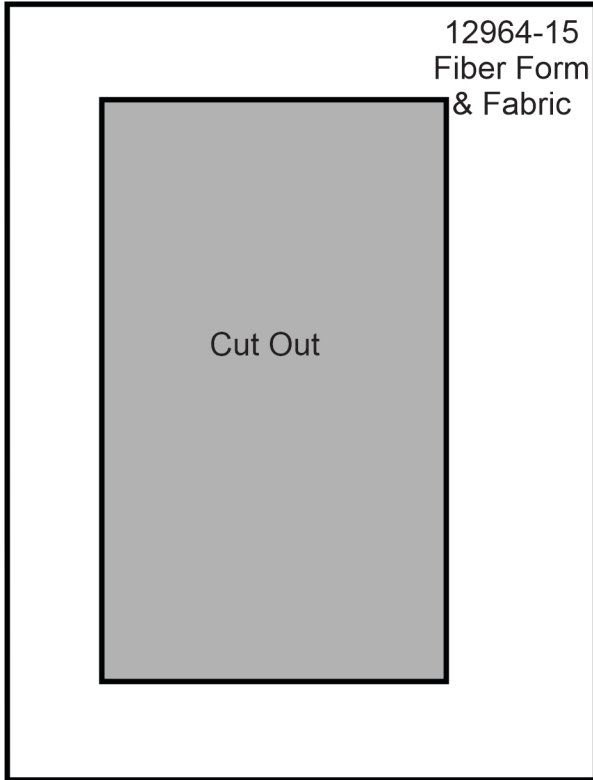
Print at 100%. No scaling. This box measures 1" x 1". Use the box as an accuracy guide when printing templates.



# APPLIQUE PATTERNS



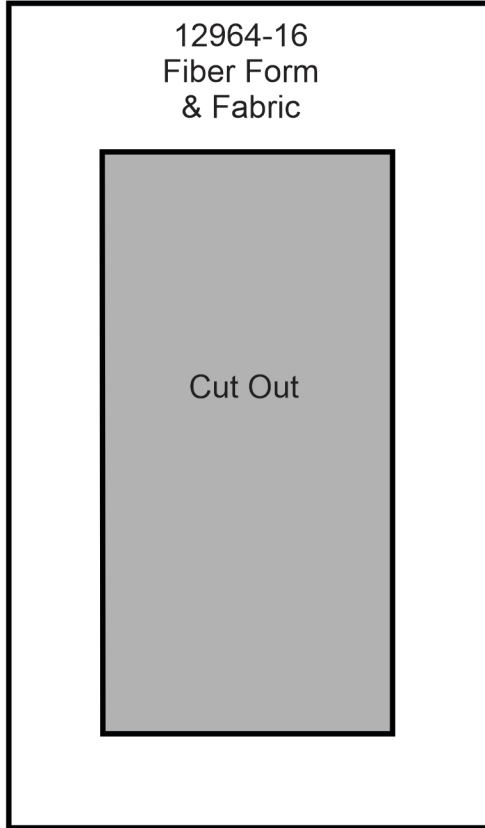
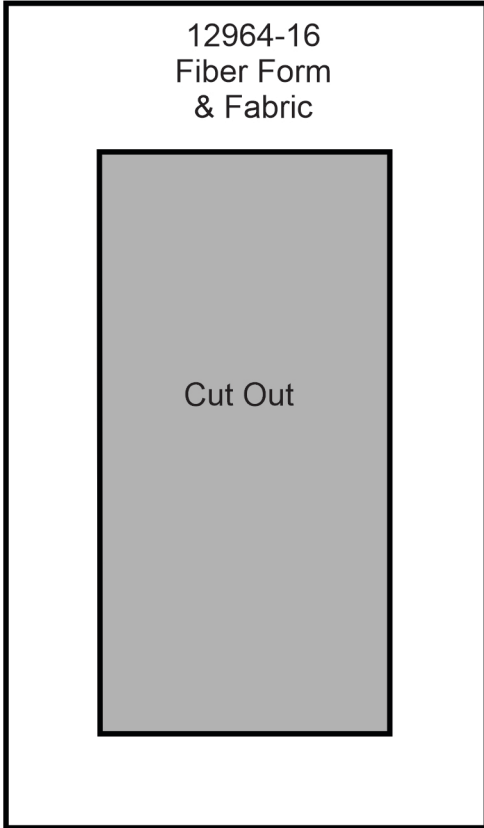
Print at 100%. No scaling. This box measures 1" x 1". Use the box as an accuracy guide when printing templates.



# APPLIQUE PATTERNS



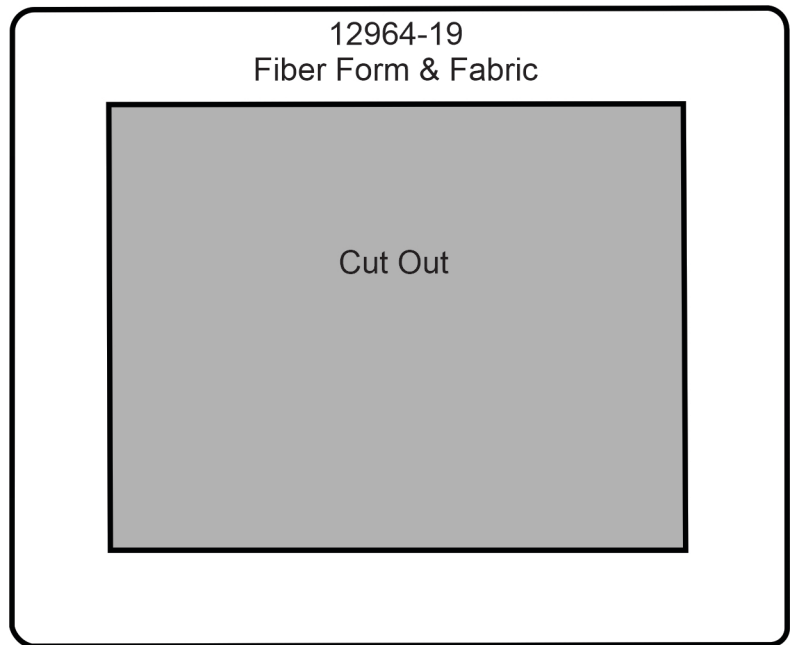
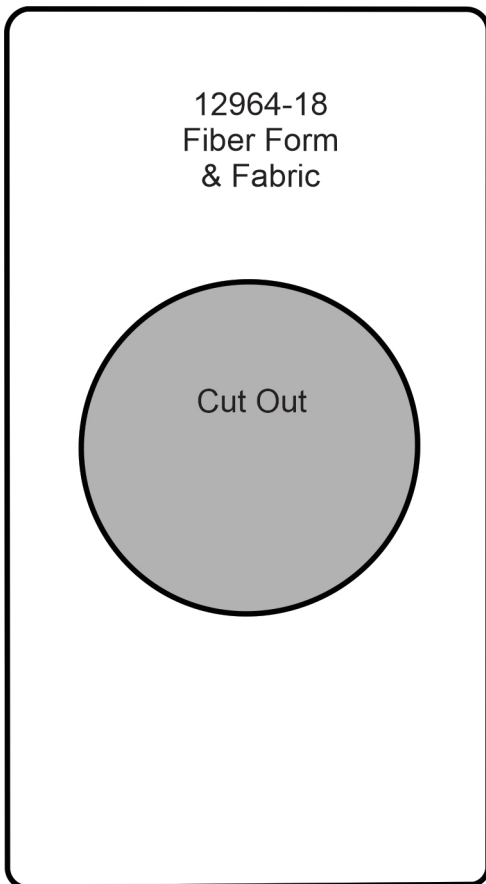
Print at 100%. No scaling. This box measures 1" x 1". Use the box as an accuracy guide when printing templates.



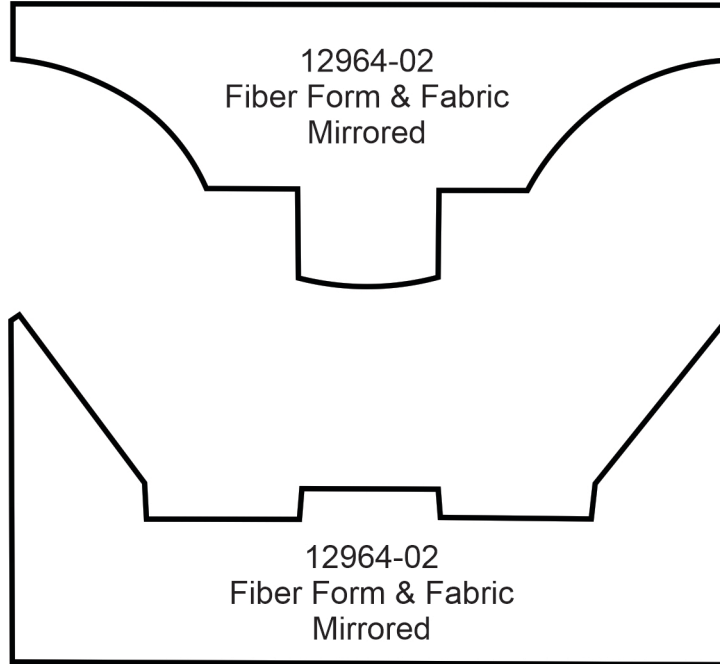
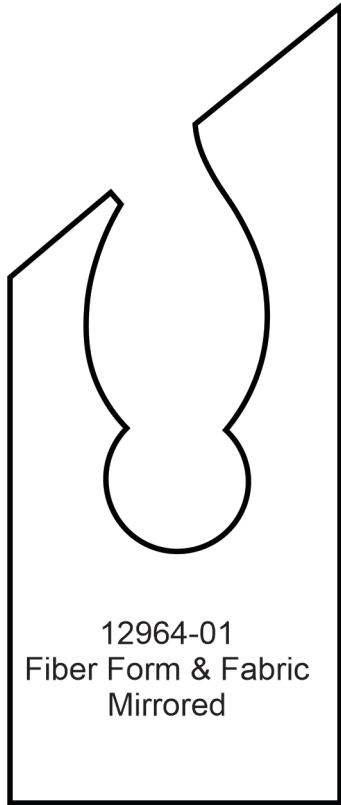


# APPLIQUE PATTERNS

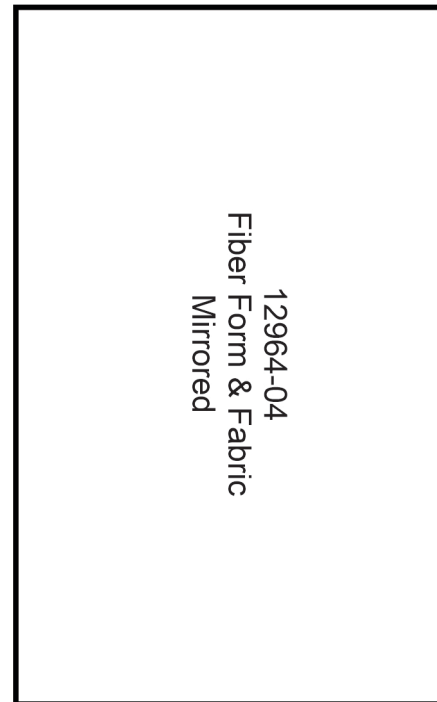
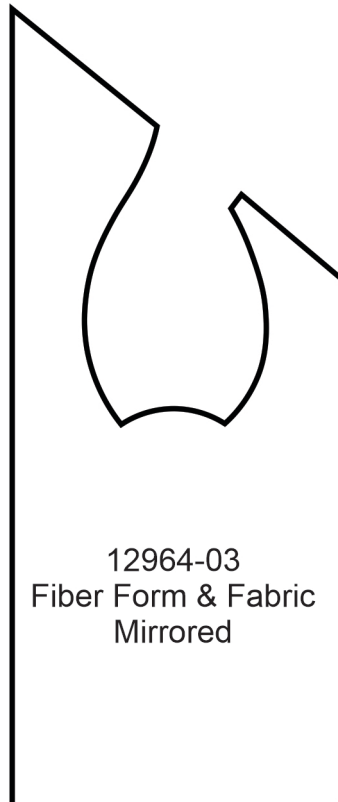
Print at 100%. No scaling. This box measures 1" x 1". Use the box as an accuracy guide when printing templates.



# MIRRORED PATTERNS



Print at 100%. No scaling. This box measures 1" x 1". Use the box as an accuracy guide when printing templates.



# MIRRORED PATTERNS



12964-05  
Fiber Form & Fabric  
Mirrored

Print at 100%. No  
scaling. This box  
measures 1" x 1".  
Use the box as an  
accuracy guide  
when printing  
templates.

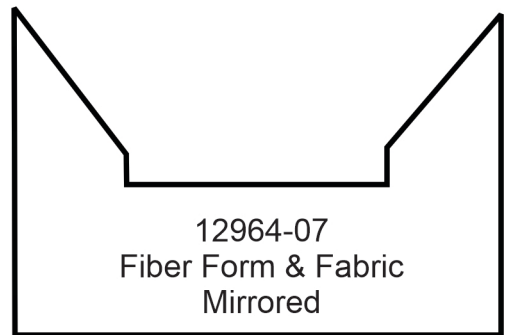
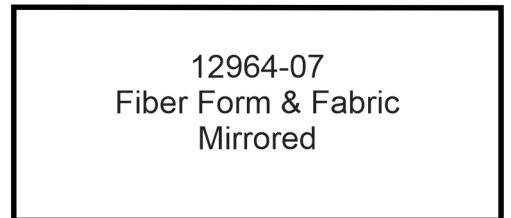
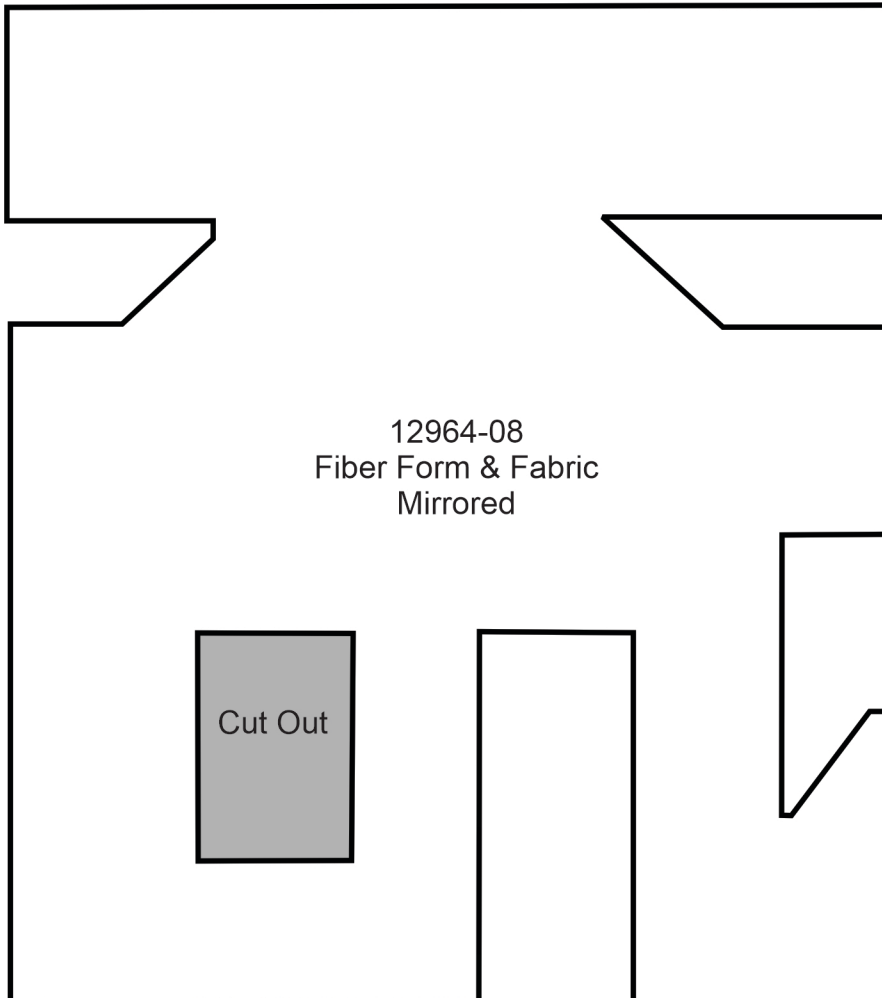
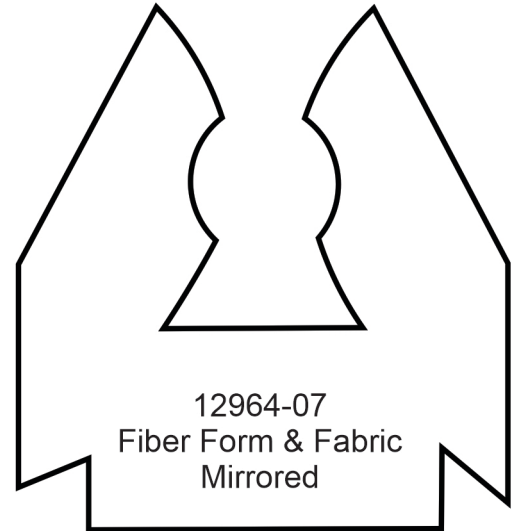
12964-05  
Fabric  
Mirrored

12964-06  
Fiber Form & Fabric  
Mirrored

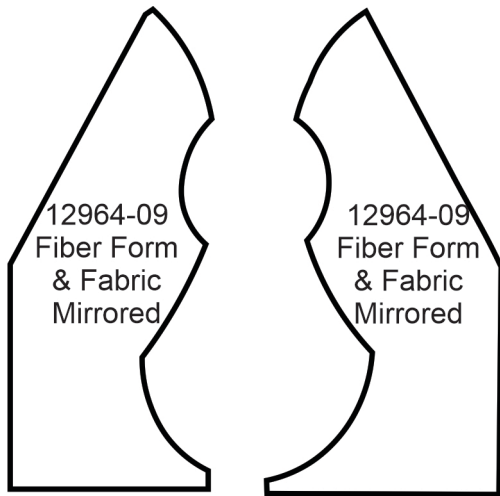
Cut Out

# MIRRORED PATTERNS

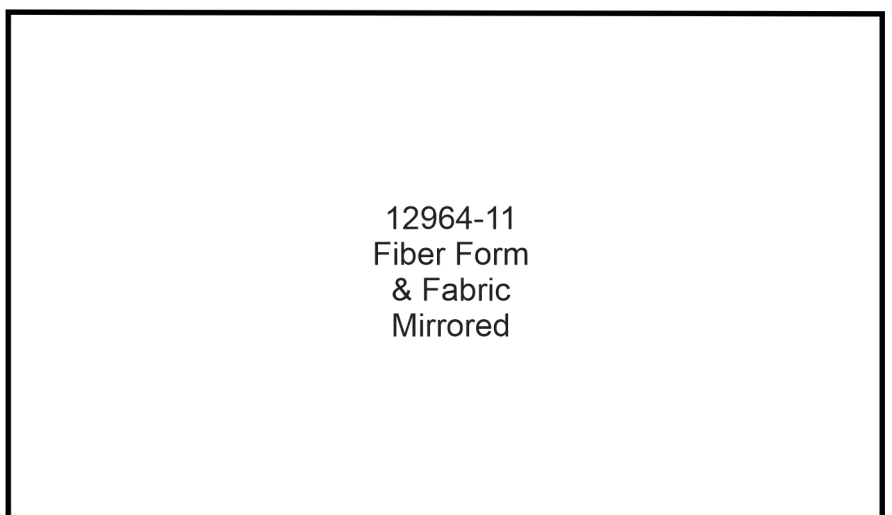
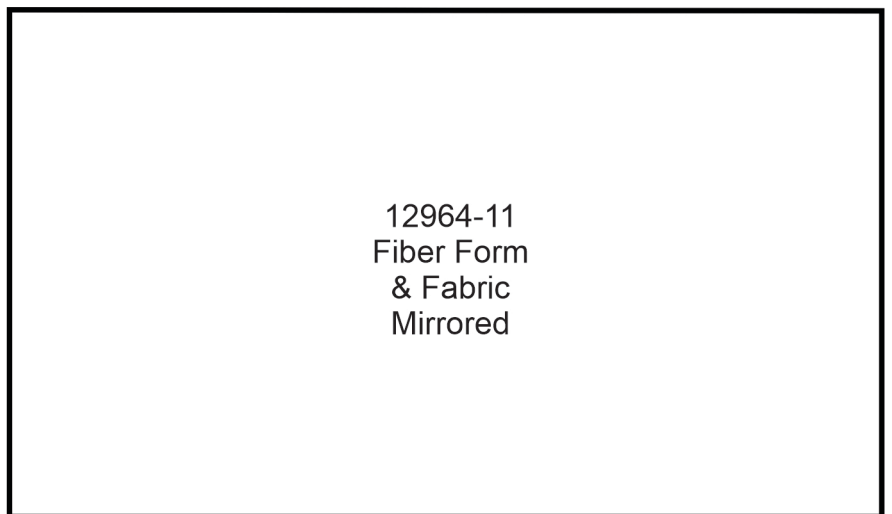
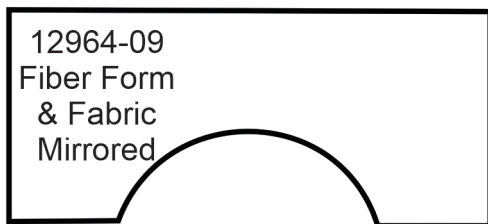
Print at 100%. No scaling. This box measures 1" x 1". Use the box as an accuracy guide when printing templates.



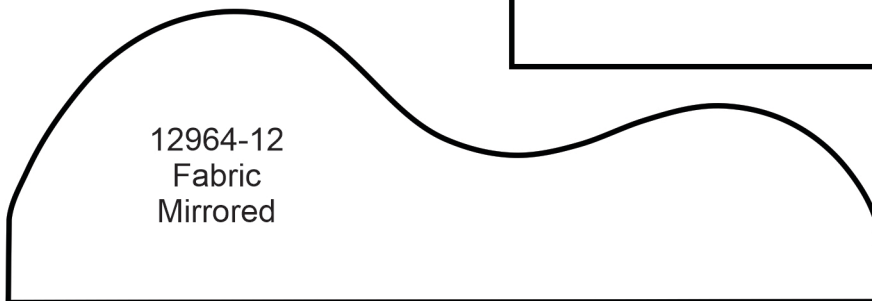
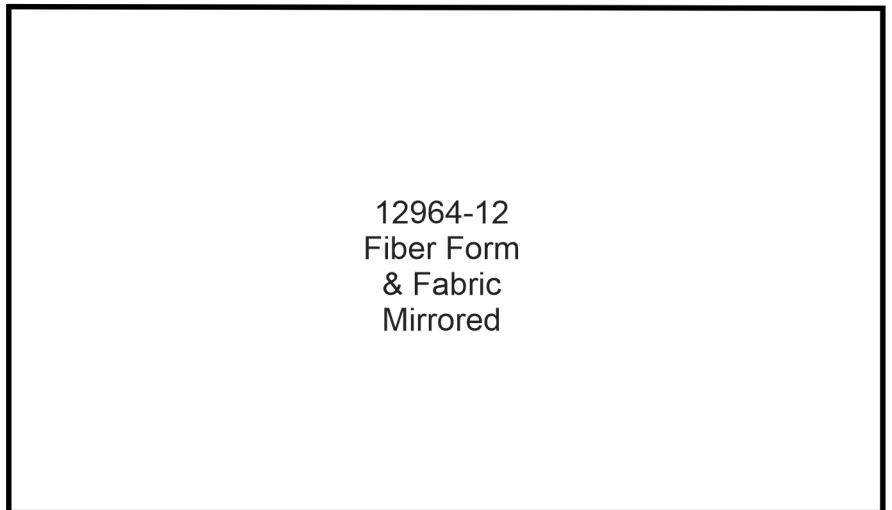
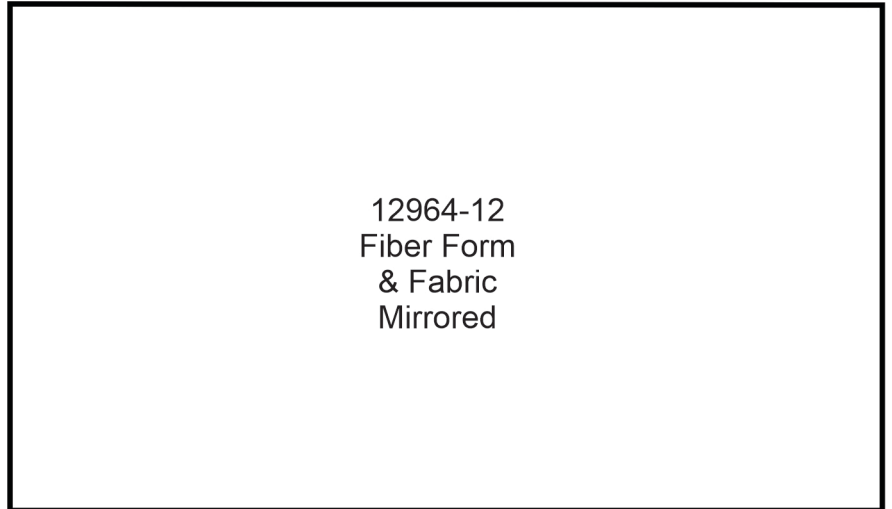
# MIRRORED PATTERNS



Print at 100%. No scaling. This box measures 1" x 1". Use the box as an accuracy guide when printing templates.



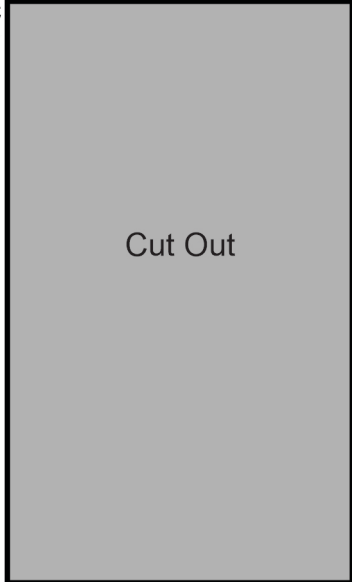
# MIRRORED PATTERNS



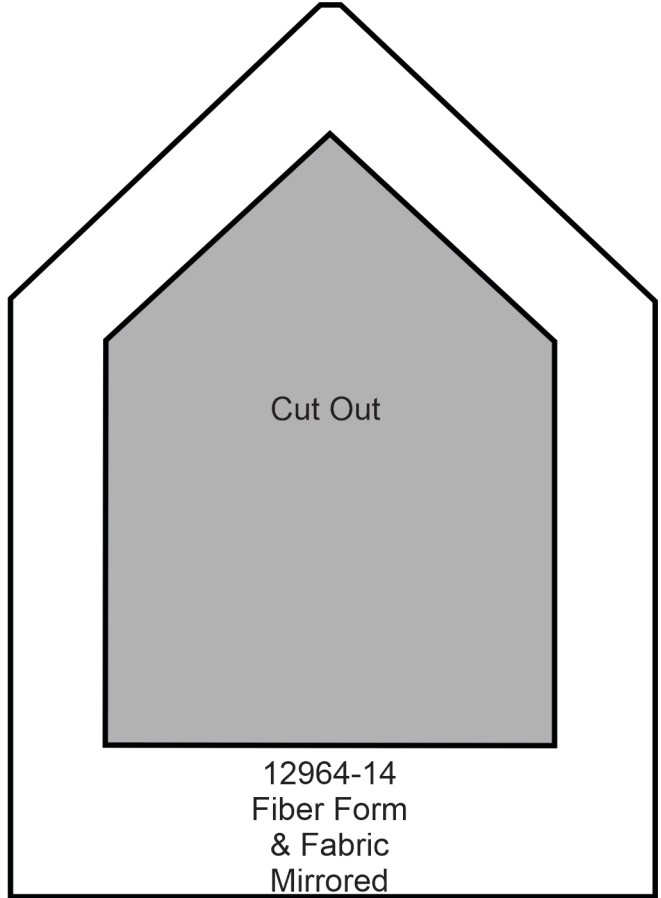
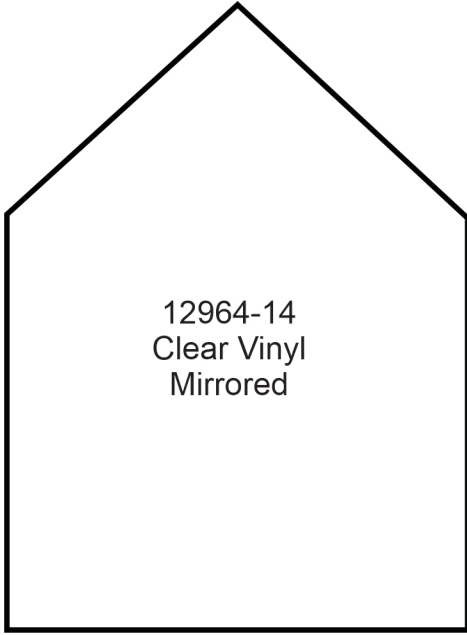
Print at 100%. No scaling. This box measures 1" x 1". Use the box as an accuracy guide when printing templates.

# MIRRORED PATTERNS

12964-13  
Fiber Form  
& Fabric  
Mirrored



Print at 100%. No scaling. This box measures 1" x 1". Use the box as an accuracy guide when printing templates.



# MIRRORED PATTERNS PREMIER COLLECTION

Print at 100%. No scaling. This box measures 1" x 1". Use the box as an accuracy guide when printing templates.

12964-17  
Fiber Form  
& Fabric  
Mirrored

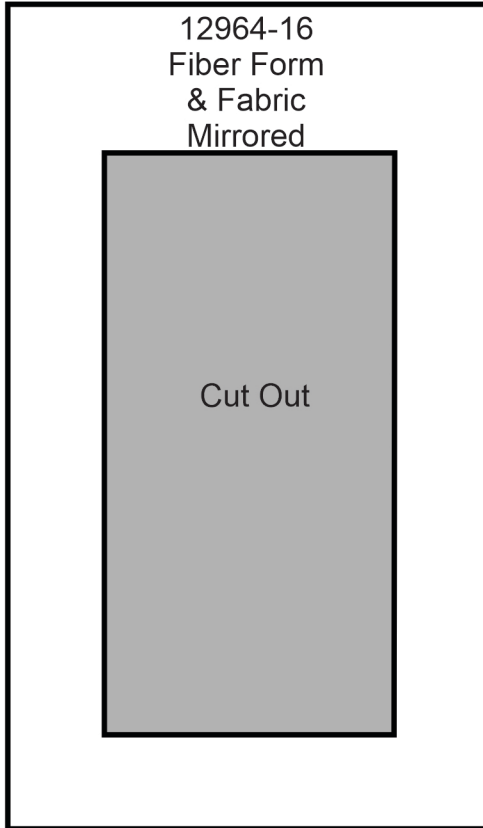
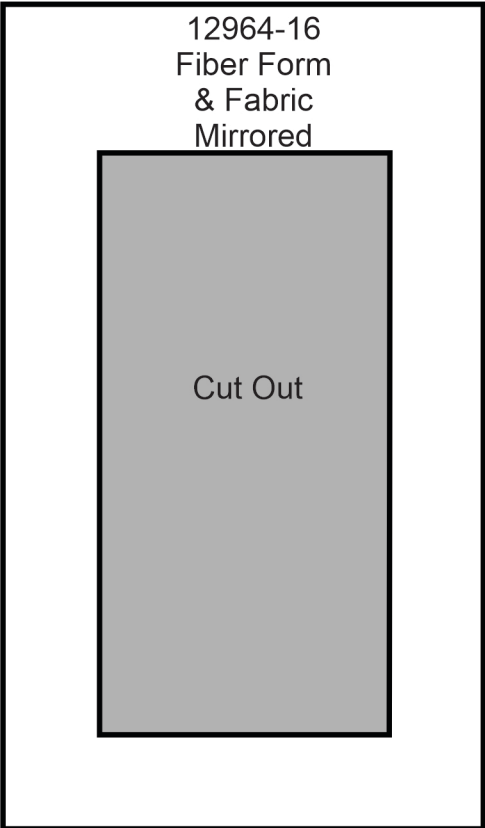
12964-15  
Clear Vinyl  
Mirrored

12964-15  
Fiber Form  
& Fabric  
Mirrored

Cut Out



# MIRRORED PATTERNS PREMIER COLLECTION



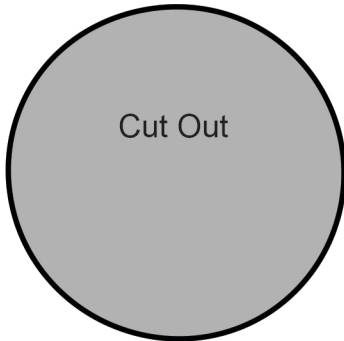
Print at 100%. No scaling. This box measures 1" x 1". Use the box as an accuracy guide when printing templates.



# MIRRORED PATTERNS

Print at 100%. No scaling. This box measures 1" x 1". Use the box as an accuracy guide when printing templates.

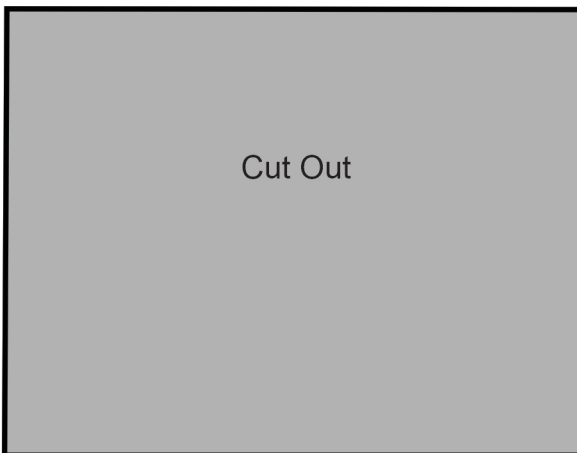
12964-18  
Fiber Form  
& Fabric  
Mirrored



12964-20  
Fiber Form  
& Fabric  
Mirrored

12964-21  
Fiber Form  
& Fabric  
Mirrored

12964-19  
Fiber Form & Fabric Mirrored



12964-21  
Fiber Form  
& Fabric  
Mirrored

12964-22  
Fiber Form  
& Fabric  
Mirrored

12964-22  
Fiber Form  
& Fabric  
Mirrored