



Patriotic Table Runner



Collection No. 13034
1 Design/8 Files

MATERIALS



Isacord Thread Colors

- 0015 White
- 0145 Skylight
- 1912 Winterberry
- 3644 Royal Navy

Note: One spool of 1000 meter thread is adequate for the project unless otherwise noted.



MATERIALS



Stabilizers

- OESD Heavy Weight TearAway
- OESD Fusible Woven
- OESD SoftWeb

Fabrics/Textiles

Background:

- Red Quilter's Cotton
 - 1 3/4 yard

Applique:

- Blue Quilter's Cotton
 - 1/2 yard
- White Quilter's Cotton
 - 1/2 yard
- Batting:
 - 1/2 yard (90" wide)

Backing:

- 1 1/2 yards OR
- 3/4 yard, cut 2 strips approximately 13 1/2" by the width of the fabric. Stitch together to create one long strip.

- Binding (Optional Finishing Technique)
 - 3/4 yard, cut 2 1/2" bias fabric strips. Stitch together at a 45-degree angle to create one long strip. Approximately 144" of binding is needed.

 **Note: Fabric yardage is based on a 11" x 15" hooping. Fabric and stabilizer amounts may vary depending on hoop size and number of tiles per hooping.**

Notions & Tools

- OESD Grippy Grid
- OESD Expert Embroidery Tape TearAway
- OESD Perfect Embroidery Press Cloth
- OESD Expert Point and Press Tool
- OESD Button Clips
- 505 Temporary Spray Adhesive
- Ruler, rotary cutter, mat
- Contrasting bobbin thread (seam stitch only, may be different colors)
- Fabric marking pen
- Walking foot or Dual feed foot
- Embroidery Needle Sharp 75/11
- Sharp 90/14 for quilting

Isacord Thread Colors

- Per thread chart



SUMMARY



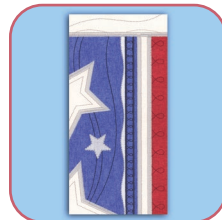
Completed Tiling Scene Size: 9" H x 51" W

13034-01



Design Size:
8.87 X 4.64 in.
Requires 1

13034-02



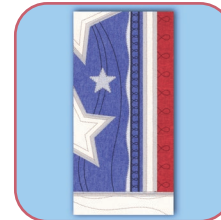
Design Size:
8.82 X 4.64 in.
Requires 1

13034-03



Design Size:
8.87 X 4.64 in.
Requires 1

13034-04



Design Size:
8.82 X 4.64 in.
Requires 1

13034-05



Design Size:
8.77 X 4.56 in.
Requires 2

13034-06



Design Size:
8.77 X 4.56 in.
Requires 2

13034-07



Design Size:
8.65 X 4.54 in.
Requires 2

13034-08



Design Size:
8.65 X 4.54 in.
Requires 2

EMBROIDERY



General Instructions

Embroider one of each design file 13034-01 through 13034-04 and two of each design file 13034-05 through 13034-08.

Design 13034-01 is shown in the instructions.

For each hooping, cut the following 11" x 15", or large enough to hoop:

- 1 layer of background fabric
- 1 layer of OESD Fusible Woven
- 1 layer of OESD Heavy Weight TearAway

Note: To economize on fabric, cut the fabric 15" wide (or the height of the hoop + 2") x the width of the fabric. Apply the stabilizers. Move the hoop down the length of the fabric as each tile is stitched. Leave a minimum of 1 1/2" between the tiles. This is called chain hooping.

Applique technique shown is cut in place. Pre-cut applique patterns are included at the end of the instructions.

Step 1

- Apply OESD Fusible Woven to the back of the background fabric, per the product directions.

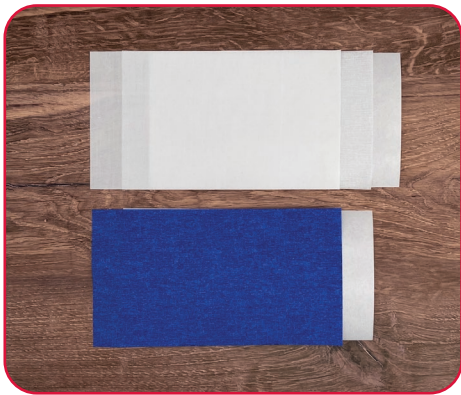


EMBROIDERY



□ Step 2

- Cut the applique fabrics 1/4" - 1/2" larger than the applique patterns. The applique patterns are included at the end of the instructions.
- Fuse one layer of Fusible Woven to the wrong side of the white applique fabric to prevent the background fabric from shadowing through.
- Fuse one layer of SoftWeb to the wrong side of all applique fabrics to provide body.



□ Step 3

- Apply one layer of OESD Heavy Weight TearAway to the wrong side of the background fabric with 505 Temporary Spray Adhesive.
- Using the OESD Grippy Grid, hoop fabric and stabilizer.



EMBROIDERY



□ Step 4

- Load the selected design into the machine.
- Example design is 13034-01.
- Thread the machine per the thread chart.
- Place the hoop on the machine.
- Stitch Machine Step 1, Blue Fabric Placement Stitch.



□ Step 5

- Remove the hoop from the machine, but NOT the project from the hoop.
- Place the hoop on a flat surface.
- Remove the paper backing off the SoftWeb on the blue applique fabric.
- Completely cover the placement stitch with the blue applique fabric.
- Tape in place with OESD Expert Embroidery Tape TearAway to secure.



EMBROIDERY



□ Step 6

- Return the hoop to the machine.
- Stitch Machine Step 2, Cut Line and Tackdown.



□ Step 7

- Remove the hoop from the machine, but NOT the project from the hoop.
- Trim the excess fabric as close to the cut line as possible. If the outermost stitches (cut line) are cut, the inner stitches (tackdown) will hold the applique in place.



□ Step 8

- Return the hoop to the machine.
- Stitch Machine Step 3, White Fabric Placement Stitch.



EMBROIDERY



Step 9

- Remove the hoop from the machine, but NOT the project from the hoop.
- Place the hoop on a flat surface.
- Remove the paper backing off the SoftWeb on the white applique fabric.
- Completely cover the placement stitch with the white applique fabric.
- Tape in place to secure.



Step 10

- Return the hoop to the machine.
- Stitch Machine Step 4, Cut Line and Tackdown.



Step 11

- Remove the hoop from the machine, but NOT the project from the hoop.
- Trim the excess fabric as close to the cut line as possible.



EMBROIDERY



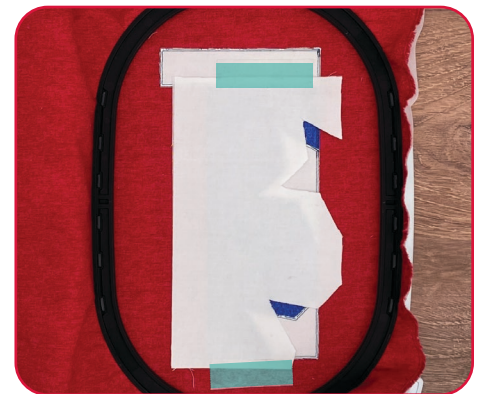
□ Step 12

- Return the hoop to the machine.
- Stitch Machine Step 5, White Fabric Placement Stitch.



□ Step 13

- Remove the hoop from the machine, but NOT the project from the hoop.
- Place the hoop on a flat surface.
- Remove the paper backing off the SoftWeb on the white applique fabric.
- Completely cover the placement stitch with the white applique fabric.
- Tape in place to secure.



□ Step 14

- Return the hoop to the machine.
- Stitch Machine Step 6, Cut Line and Tackdown.

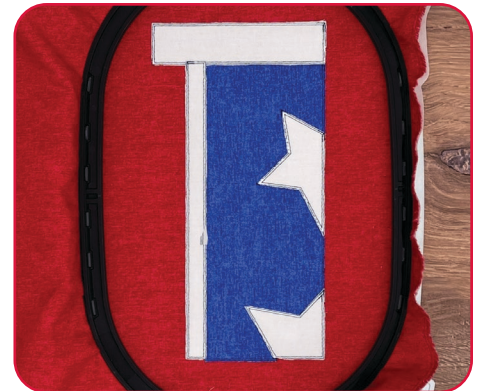


EMBROIDERY



□ Step 15

- Remove the hoop from the machine, but NOT the project from the hoop.
- Trim the excess fabric as close to the cut line as possible.



□ Step 16

- Press the applique shapes in the hoop to fuse the SoftWeb on the back of the appliques to the background fabric.
- Cool completely before continuing the embroidery design.



□ Step 17

- Return the hoop to the machine.
- Stitch Machine Steps 7 – 10 per the thread chart, **stopping before the last machine step.**



EMBROIDERY



Step 18

- The last color in each tile is called "Seam". This line is the guide when trimming and stitching the tiles together and needs to be highly visible on the back side of the tile. Stitch the top color in a thread that blends with the fabric.
- For the bobbin, use a color that contrasts sharply with the back of the tile.

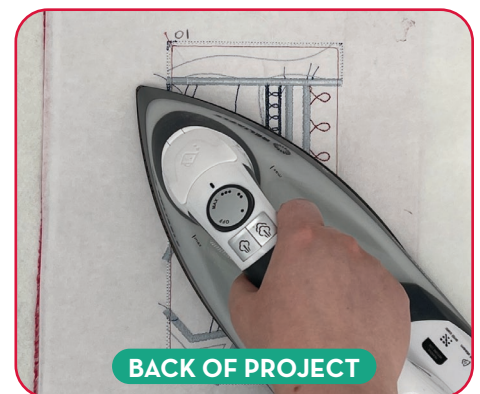
Note: Since the bobbin color doesn't have to be the same on each tile, this is a great time to use up partially wound bobbins.



Step 19

- After embroidery is complete, press each tile face down on an OEESD Perfect Embroidery Press Cloth.
- Write the number of the tile on the back so it is easily identified during construction! Use a pen or pencil that will not bleed through to the front side.

Note: Using the Perfect Embroidery Press Cloth when pressing your design helps prevent the stitches from becoming crushed and absorbs steam for a perfectly pressed finish.



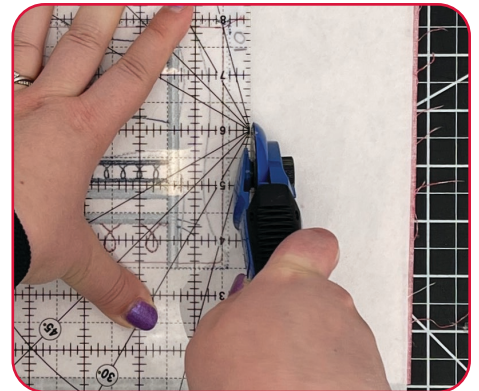
EMBROIDERY



□ Step 20

- At the cutting mat, place the tile right side down.
- Identify the "seam" stitch line. Trim 1/2" out from the seam stitch line, on all four sides, to create the seam allowance.

✓ **Note: Accuracy here will significantly facilitate the construction of the scene.**



□ Step 21

- For the curved edge of tiles 13034-07 and 13034-08, use a ruler to mark a 1/2" seam allowance along the curves.
- Trim along the markings.

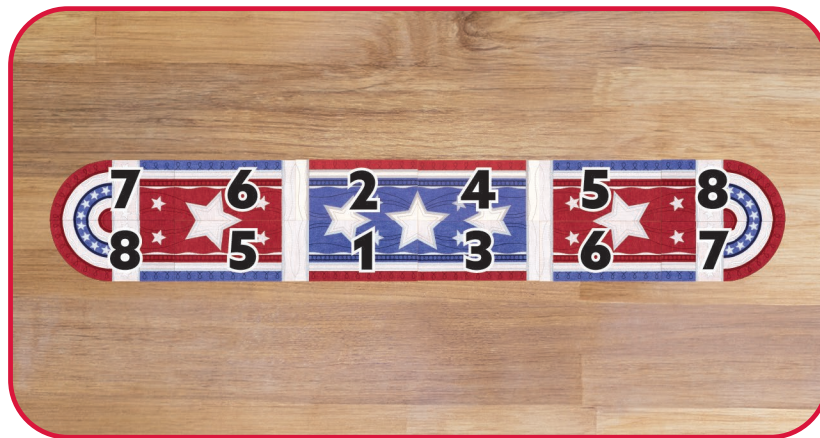


EMBROIDERY



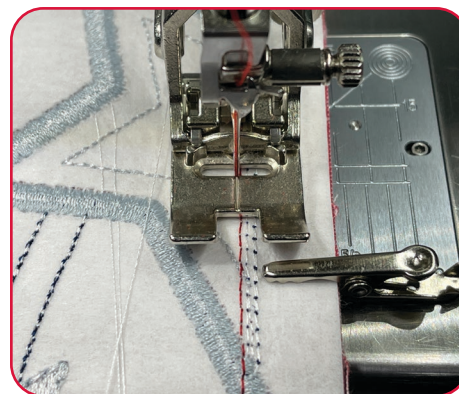
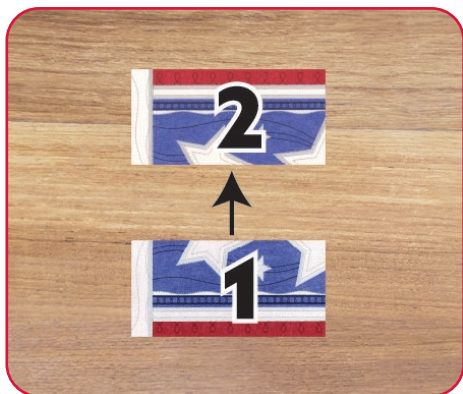
□ Step 22

- Arrange the tiles in the layout for the scene.



□ Step 23

- Stitch two adjacent tiles, right sides together; matching the long top and bottom sides together. Align the edges and stitch just inside of the seam line.
- If the seams or major points of matching do not match up, try stitching that part first. Check for accuracy.
- Repeat until all the tiles have been paired.

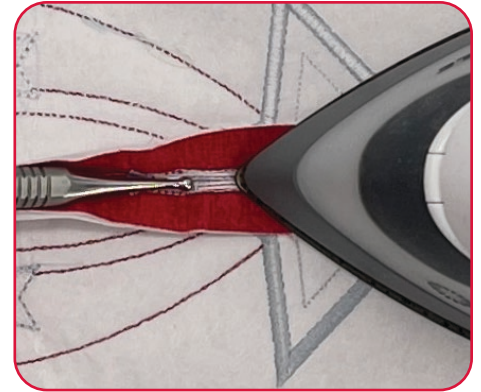


EMBROIDERY



□ Step 24

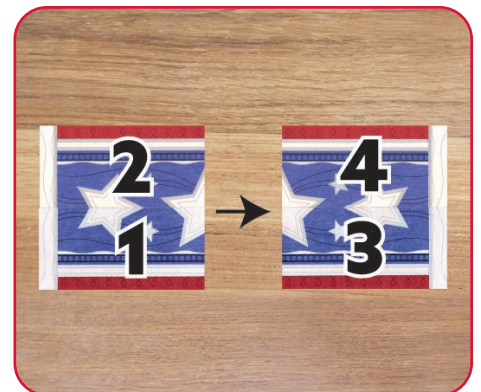
- Press each seam open.
- While warm, open the seam allowance with the large ball of the OESD Expert Point and Press Tool.
- Press again and allow to cool.
- Once cool, remove the excess stabilizer in the seam allowance.
- Do not remove excess stabilizer from inside the seam line.



✔ **Note: If the seams do not come apart easily, press both seam allowances to one side using steam and a cotton or linen setting.**

□ Step 25

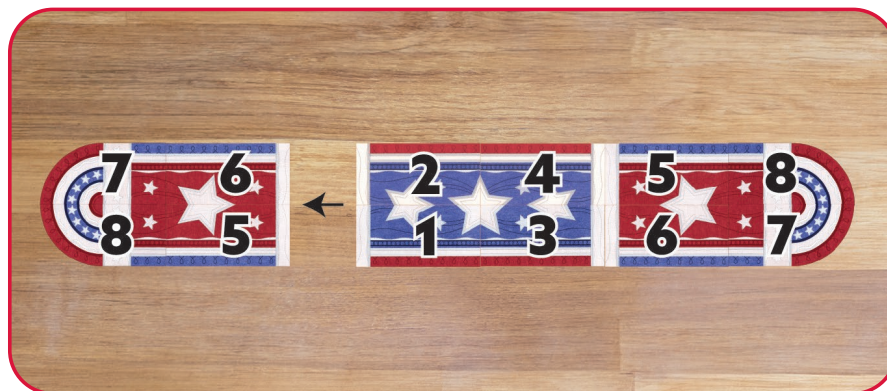
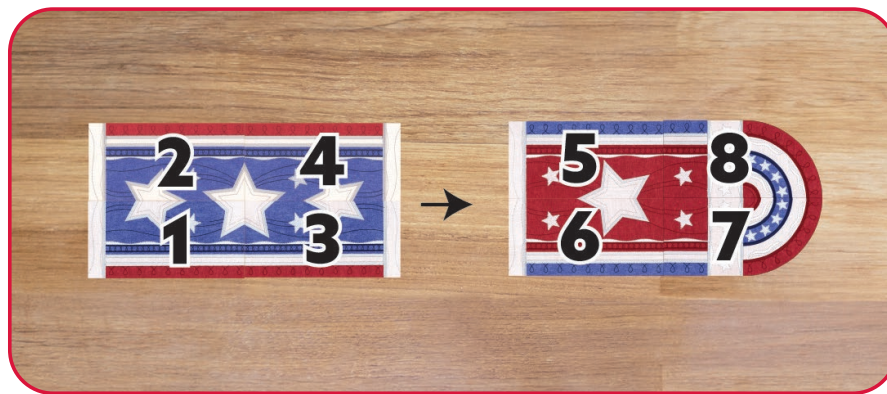
- Lay out the pressed tiles.
- Pair the tiles in groups of 4, connecting the columns.
- Align the center seams.
- Stitch just inside the seam line, connecting all four tiles.
- Press seams open.
- Repeat for remaining pairs of tiles.



EMBROIDERY

□ Step 26

- Finish connecting the units of tiles to the ones beside. Press and remove stabilizer from the seam allowances. Then continue to stitch the rows together and press until the scene is complete.



FINISHING

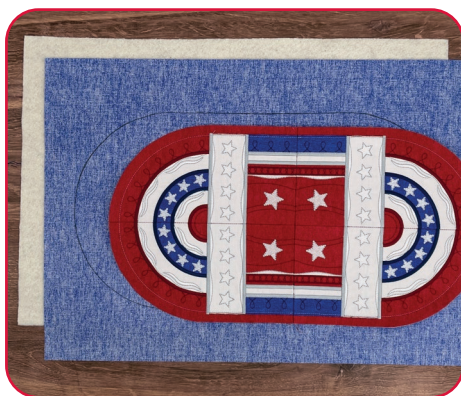
There are multiple ways to finish table runners. Two options are shown below.

Option 1: Stitch and Turn

Note: This finishing method features a Patriotic Table Runner that uses two each of designs 13034-07 and 13034-08 which makes a smaller table topper.

Step 27

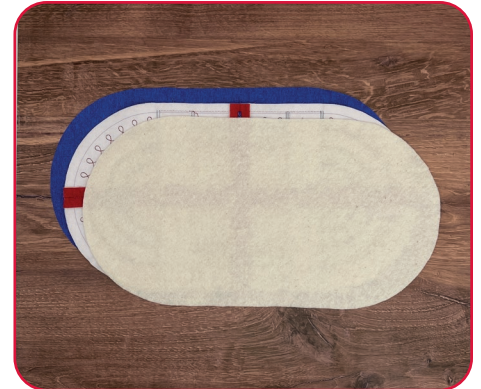
- Use the pieced table runner as a pattern for the back and batting pieces.
- Trace the outline of the table runner onto the wrong side of the backing fabric and batting.
- Cut out.



FINISHING

□ Step 28

- Layer the backing (right side up), the table runner (right side down), with the batting on top.



□ Step 29

- Sew around the outside of the table runner with a 1/2" seam allowance. Leave a 6" opening along one long edge for turning it right side out.



FINISHING

□ Step 30

- Clip the curves.
- Turn the table runner right side out through the 6" opening.
- Use the Expert Point and Press Tool to smooth out the seams.



□ Step 31

- Press the table runner on a Perfect Embroidery Press Cloth.
- Press the seam allowance of the opening inwards and hold in place with button clips.



FINISHING

□ Step 32

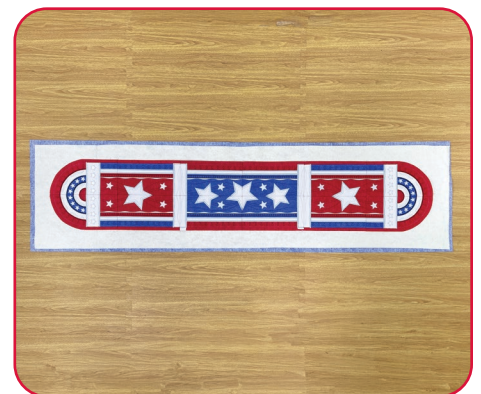
- Topstitch 1/8" from the edge around the entire table runner to close the opening and provide a finished look.



Option 2: Binding

□ Step 33

- Cut batting and backing at least 4" larger than the tiling scene.
- Layer the backing (right side down), batting, and center the tiling scene (right side up).
- Spray baste all 3 layers with 505 Temporary Spray Adhesive.



FINISHING

□ Step 34

- Thread the sewing machine with a thread color that blends with the scene or invisible thread.
- Stitch in the ditch where the tiles connect to attach the batting and backing to the top. For best results, use a walking foot or a dual feed foot.
- Trim 1/4" from the seam line of the tiling scene through all three layers to square up the finished scene. Zigzag over the raw edges to join the edges together to make the binding process easier.



□ Step 35

- Bind as desired.

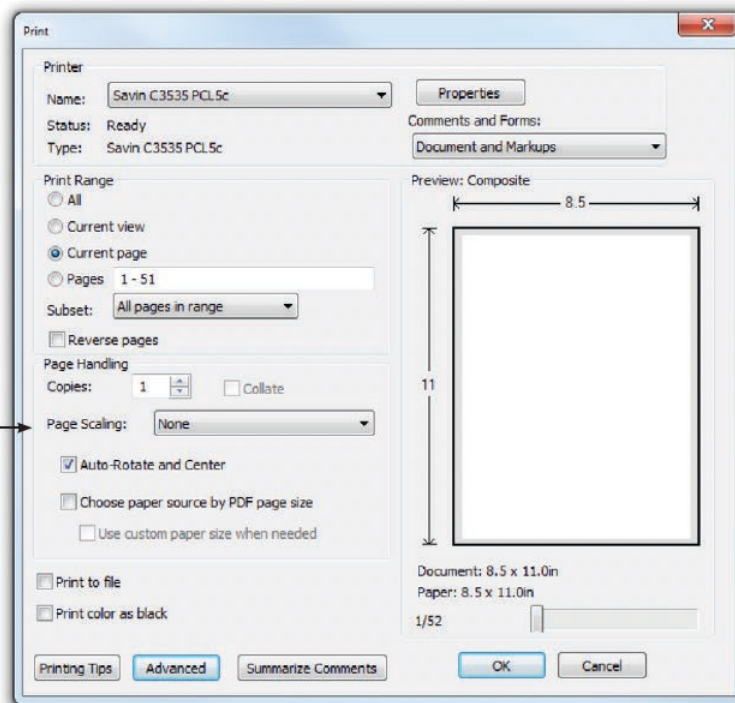


PRINTING INSTRUCTIONS



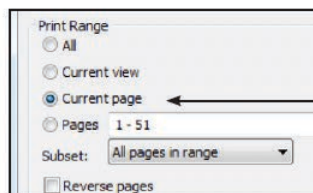
ATTENTION

When printing this document, any page scaling or page fitting options in your print dialog box must be turned OFF or set to NONE so that your files will print out at their actual size. Images not printed at actual size will not function as intended.



TO SAVE PAPER

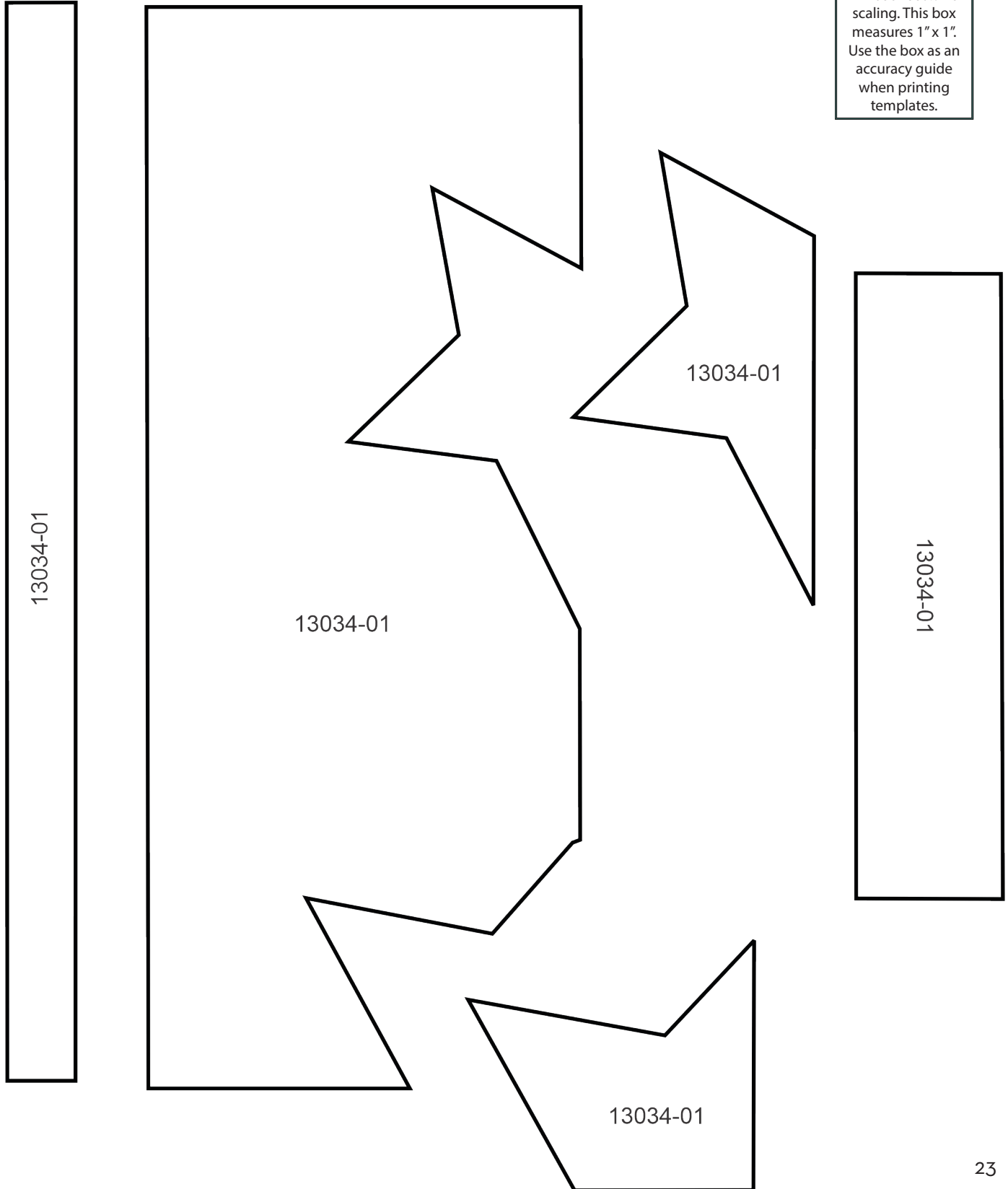
Only print the desired image by navigating to the image's page, go to File > Print and select "Current page" in the print dialog box. Repeat for each desired image.



APPLIQUE PATTERNS



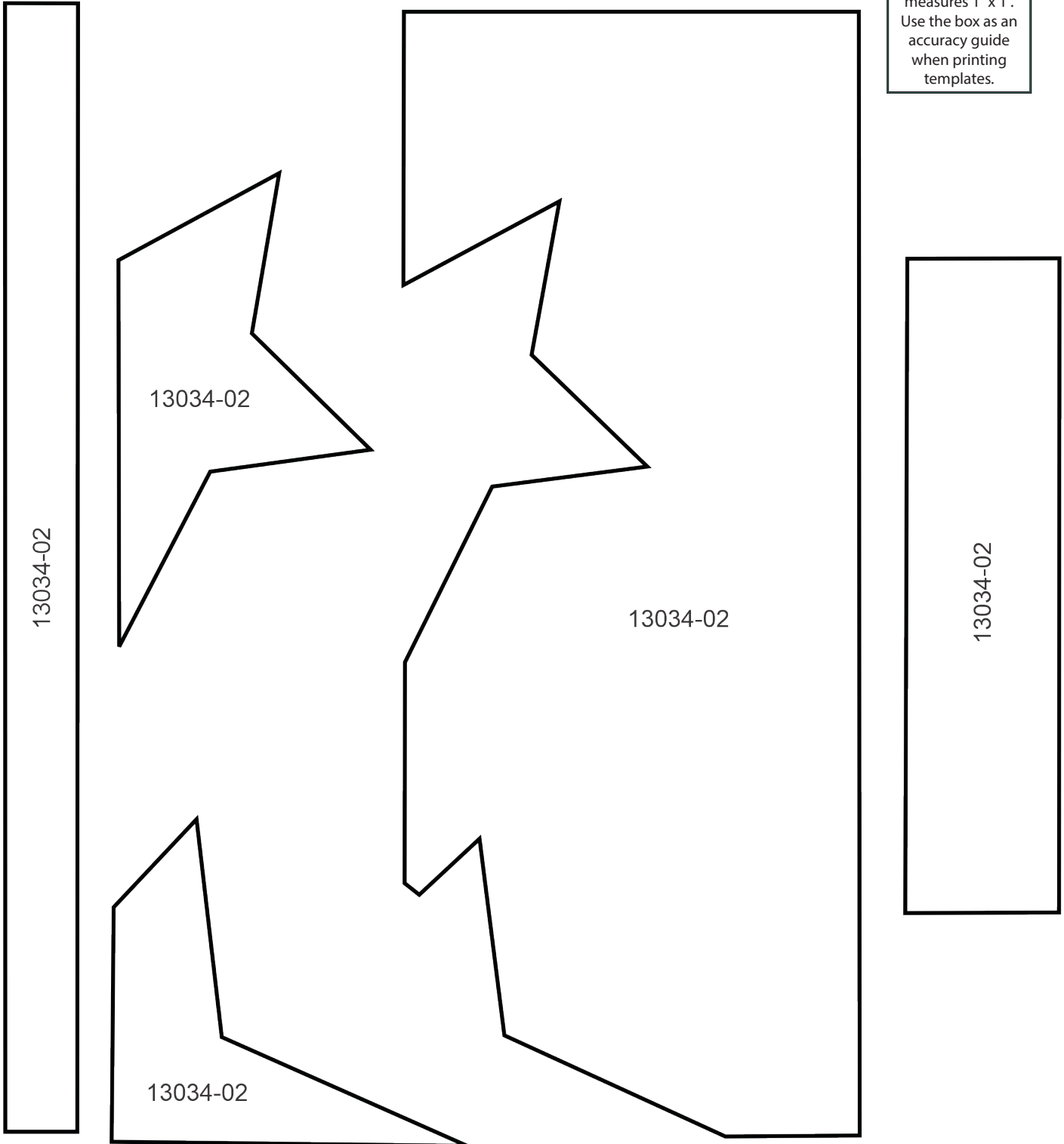
Print at 100%. No scaling. This box measures 1" x 1". Use the box as an accuracy guide when printing templates.



APPLIQUE PATTERNS



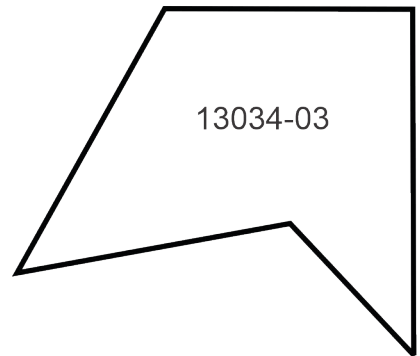
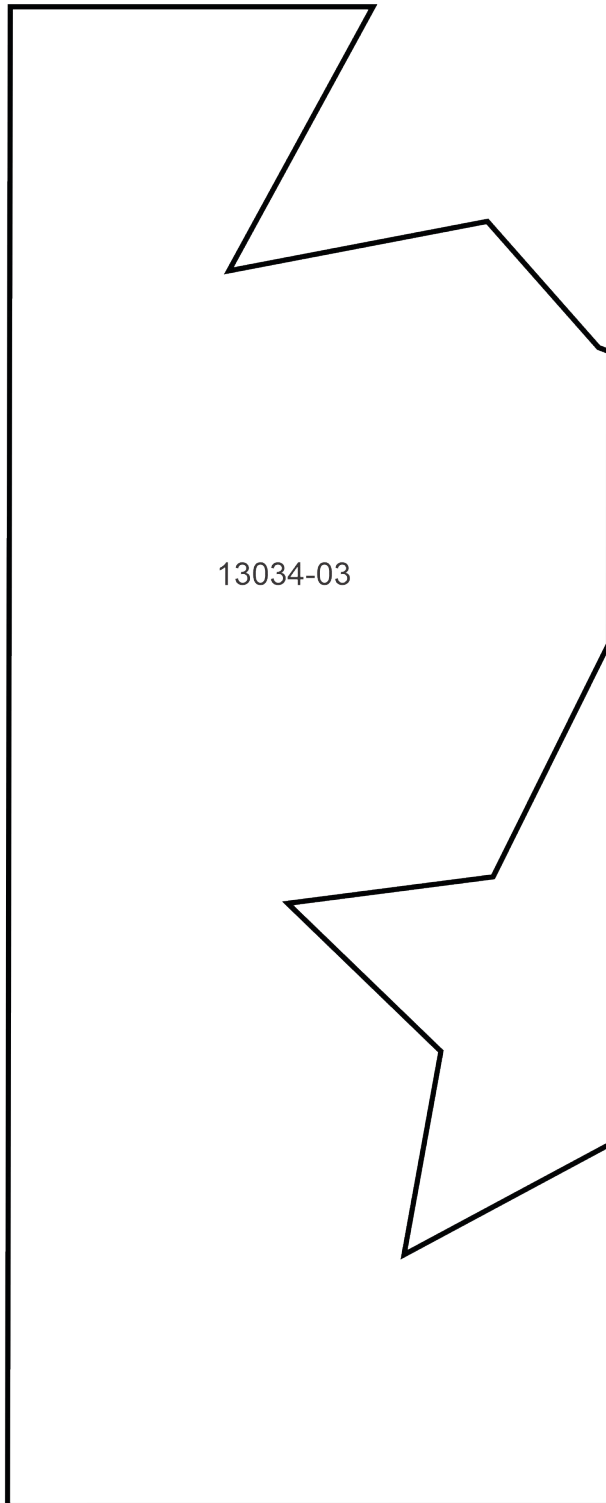
Print at 100%. No scaling. This box measures 1" x 1". Use the box as an accuracy guide when printing templates.



APPLIQUE PATTERNS



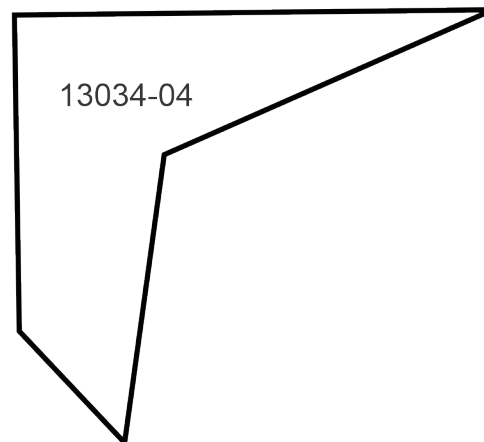
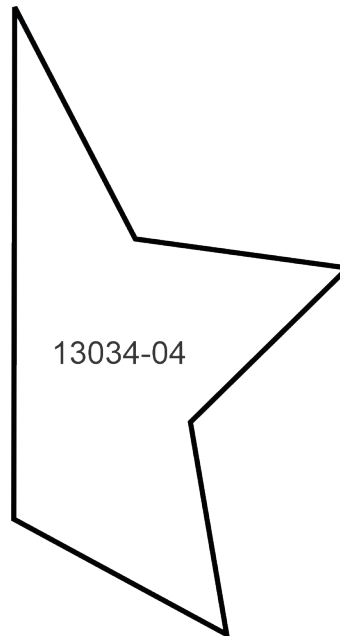
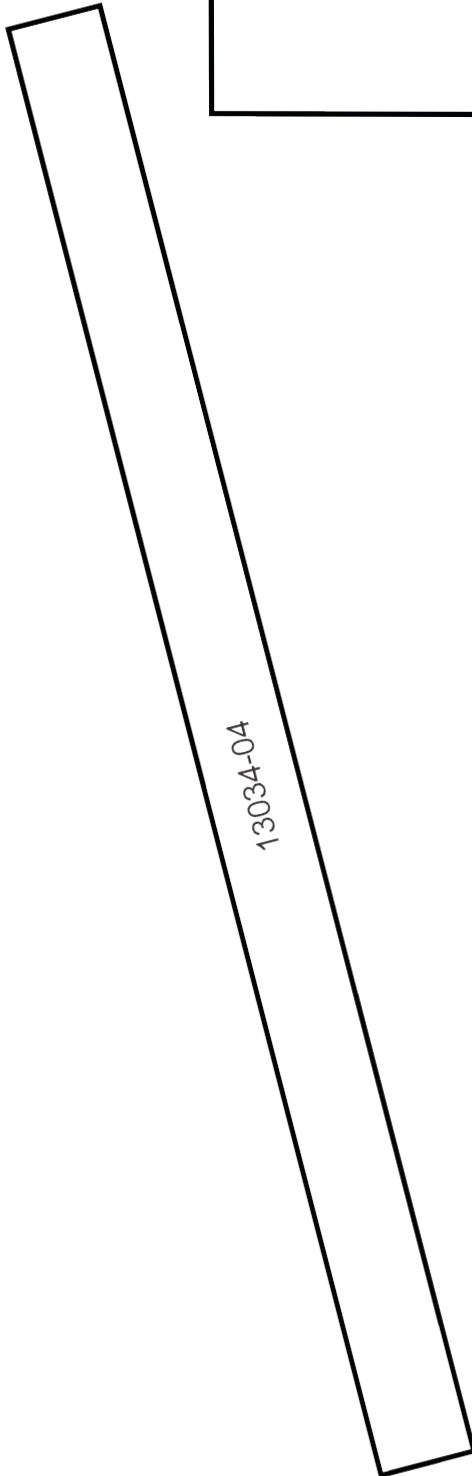
Print at 100%. No scaling. This box measures 1" x 1". Use the box as an accuracy guide when printing templates.



APPLIQUE PATTERNS



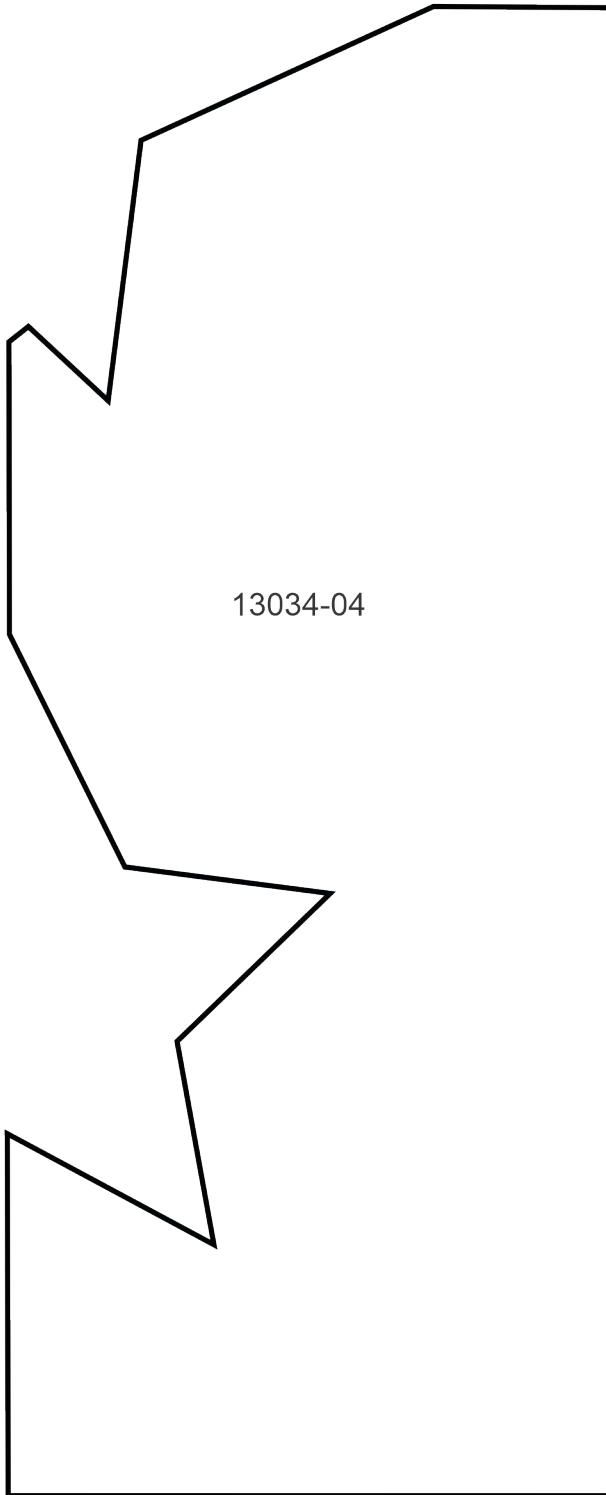
Print at 100%. No scaling. This box measures 1" x 1". Use the box as an accuracy guide when printing templates.



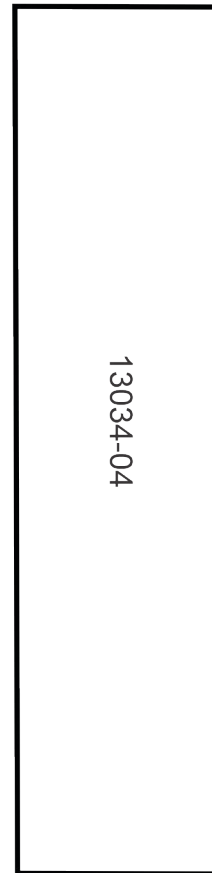
APPLIQUE PATTERNS



Print at 100%. No scaling. This box measures 1" x 1". Use the box as an accuracy guide when printing templates.



13034-04

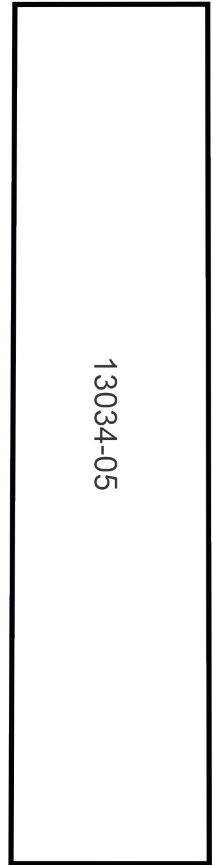
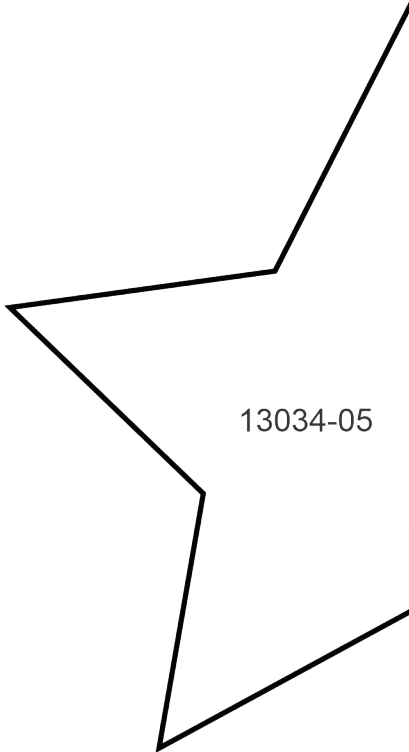
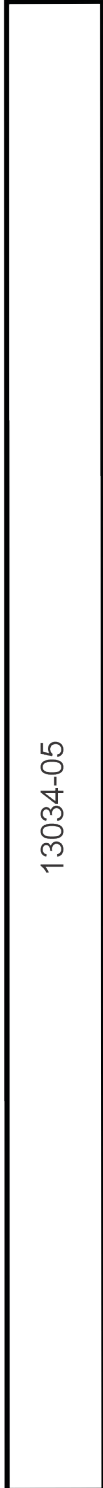
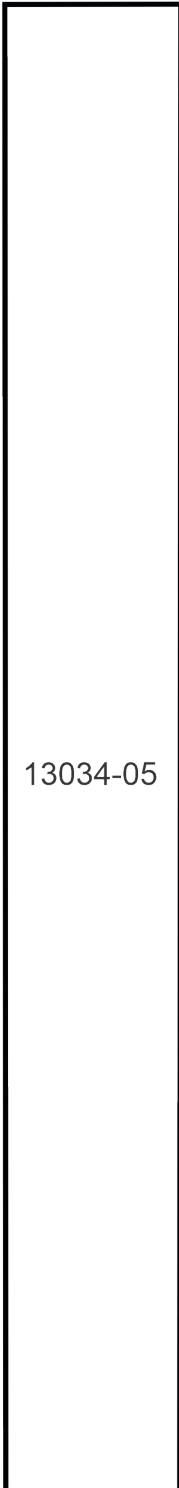


13034-04

APPLIQUE PATTERNS



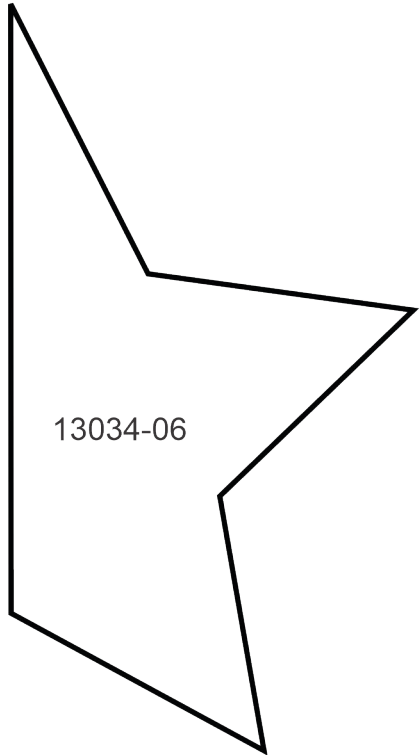
Print at 100%. No scaling. This box measures 1" x 1". Use the box as an accuracy guide when printing templates.



APPLIQUE PATTERNS



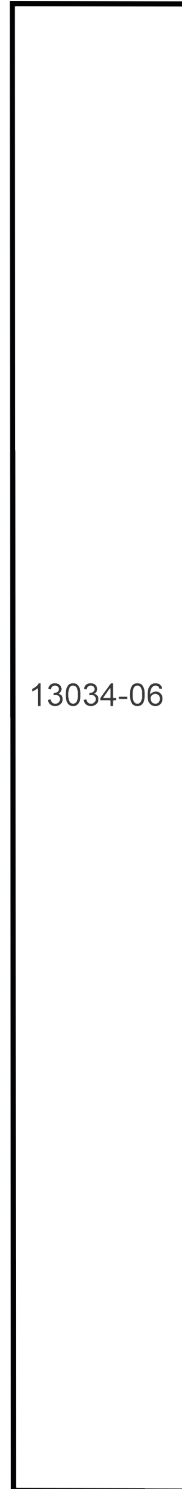
Print at 100%. No scaling. This box measures 1" x 1". Use the box as an accuracy guide when printing templates.



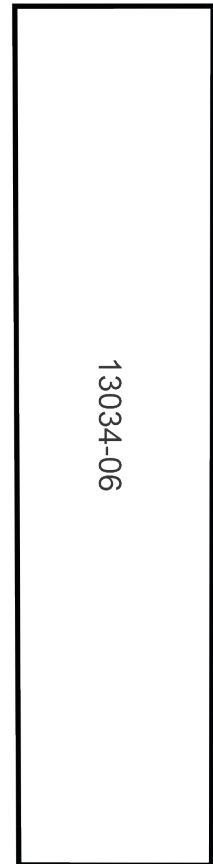
13034-06



13034-06



13034-06

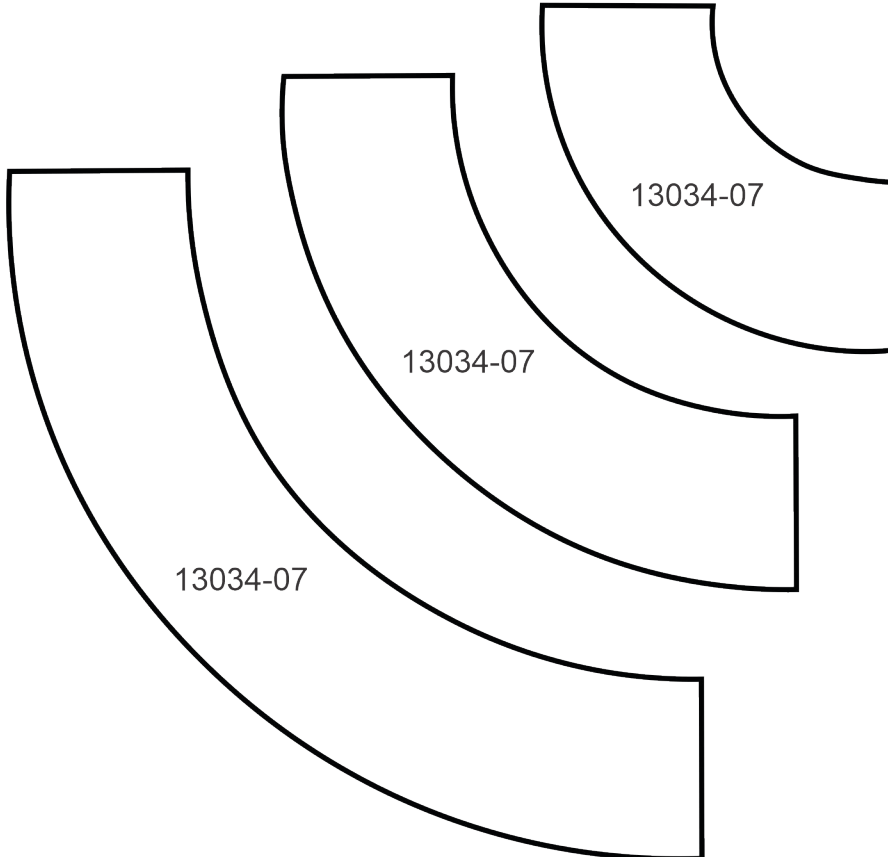
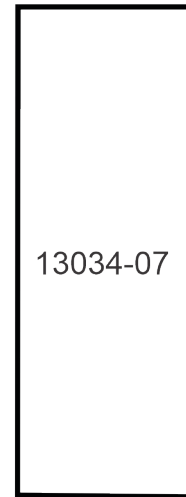
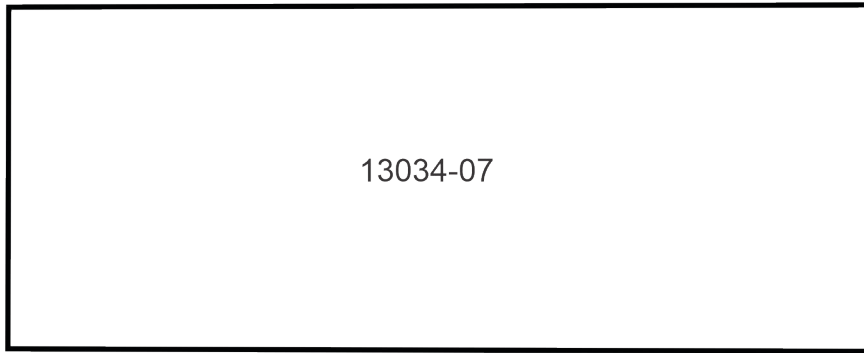


13034-06

APPLIQUE PATTERNS



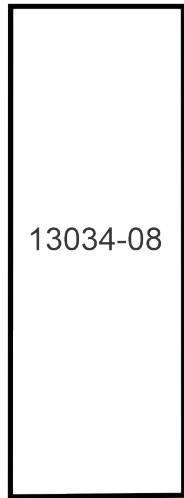
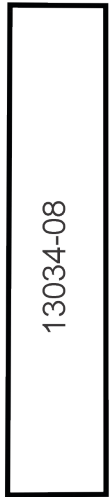
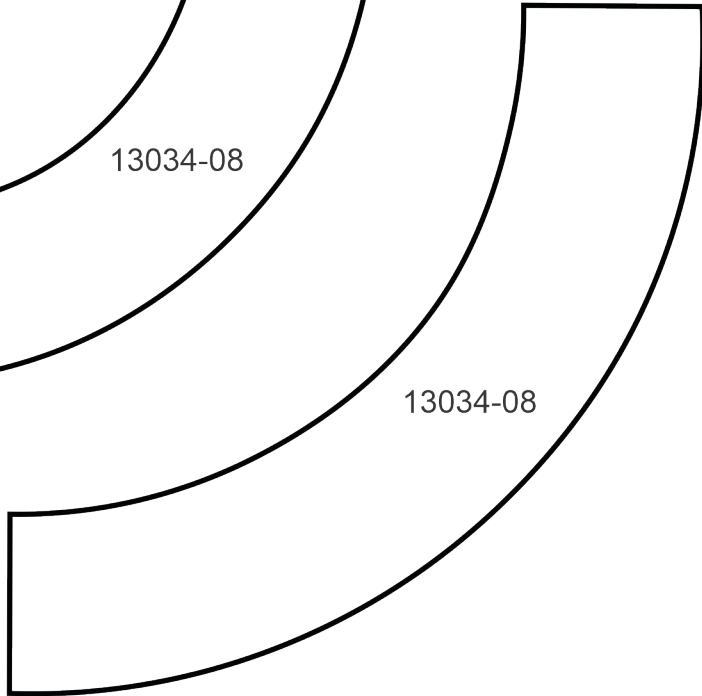
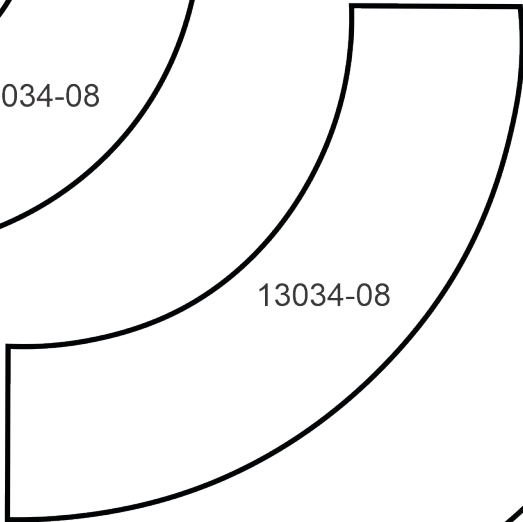
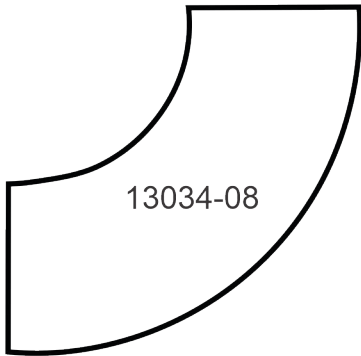
Print at 100%. No scaling. This box measures 1" x 1". Use the box as an accuracy guide when printing templates.



APPLIQUE PATTERNS



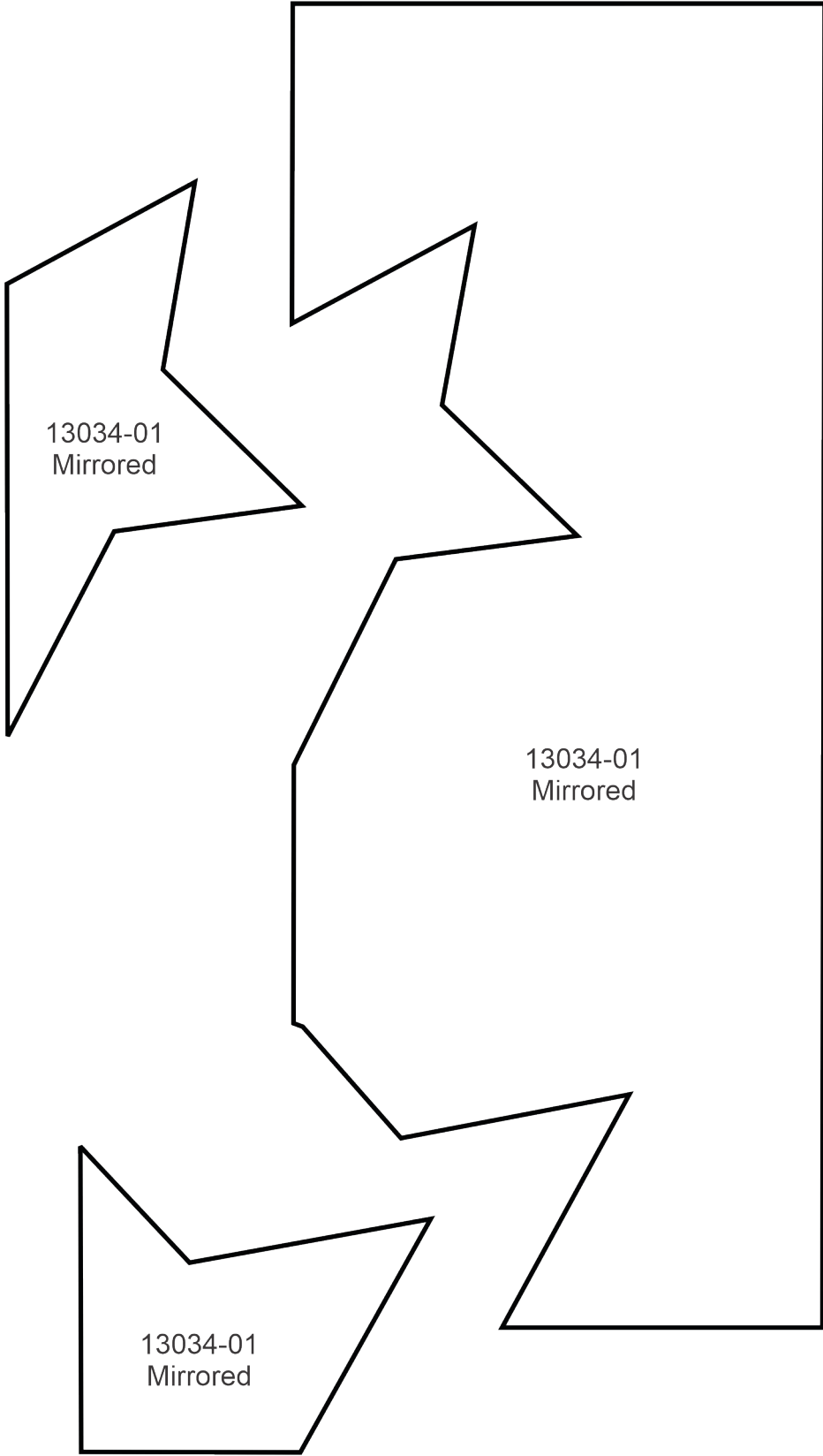
Print at 100%. No scaling. This box measures 1" x 1". Use the box as an accuracy guide when printing templates.



MIRRORED PATTERNS

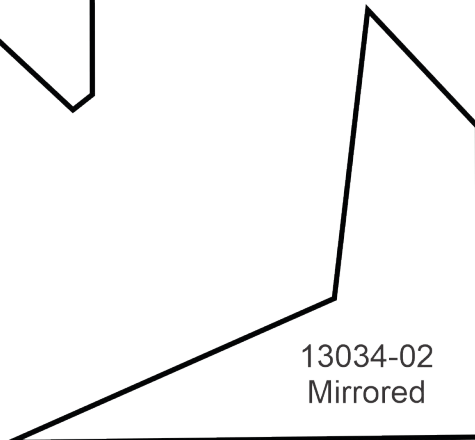
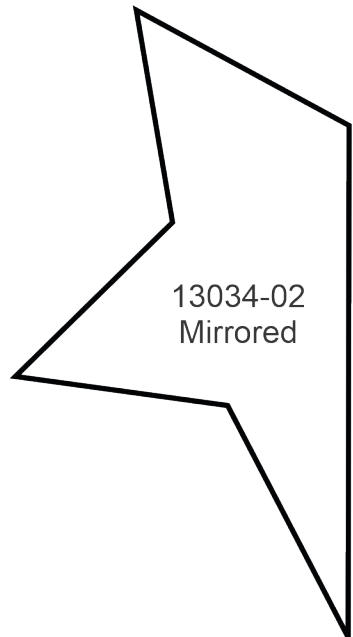
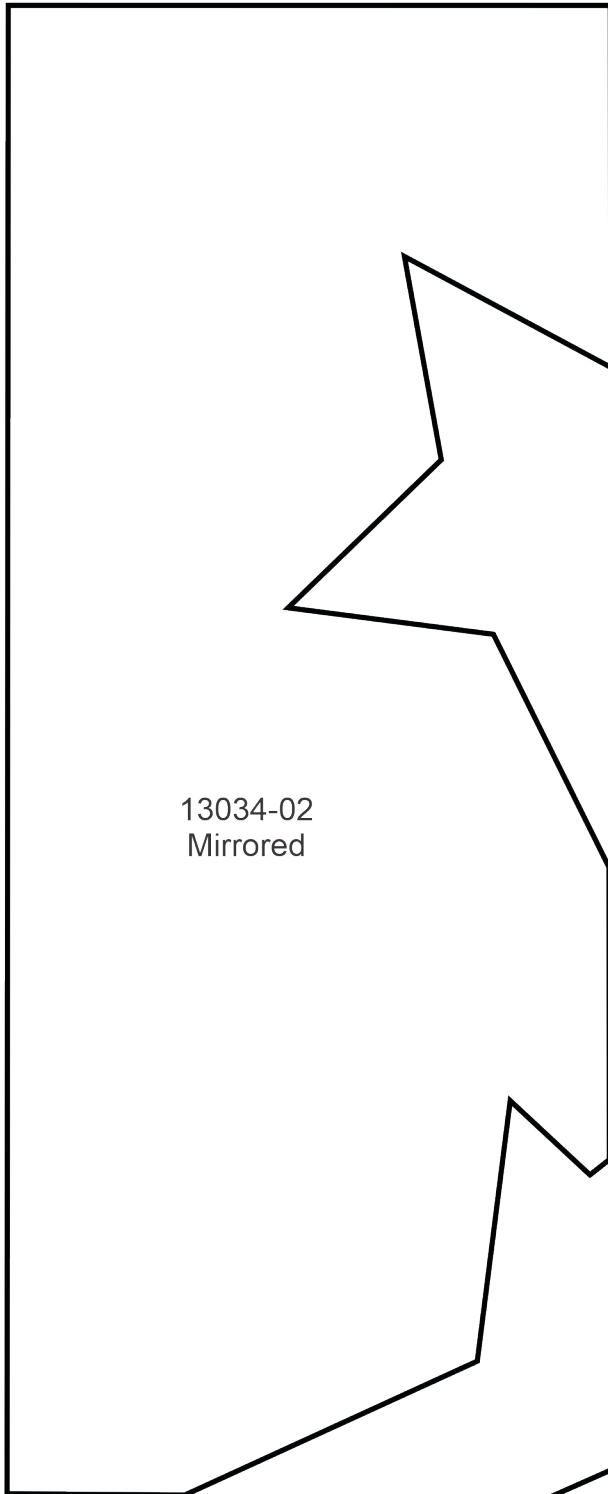


Print at 100%. No scaling. This box measures 1" x 1". Use the box as an accuracy guide when printing templates.



MIRRORED PATTERNS

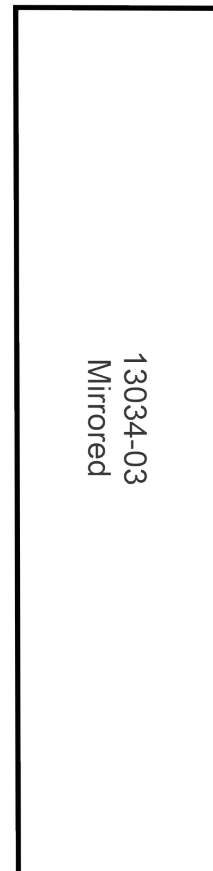
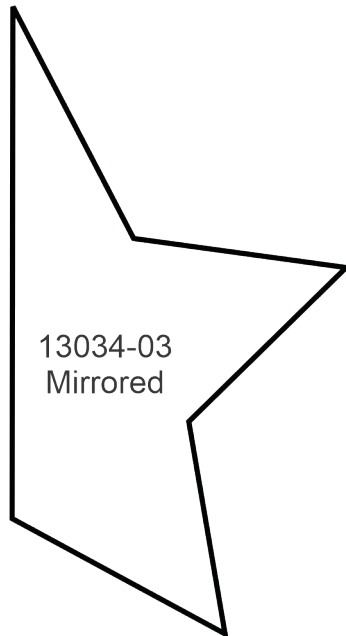
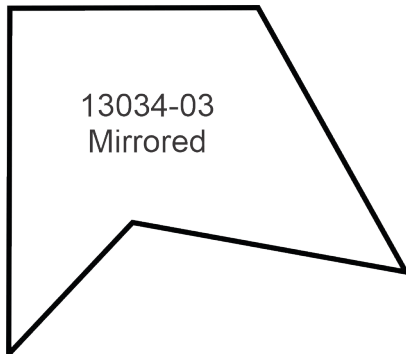
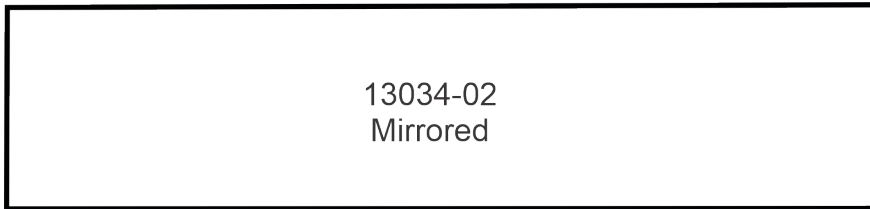
Print at 100%. No scaling. This box measures 1" x 1". Use the box as an accuracy guide when printing templates.



MIRRORED PATTERNS



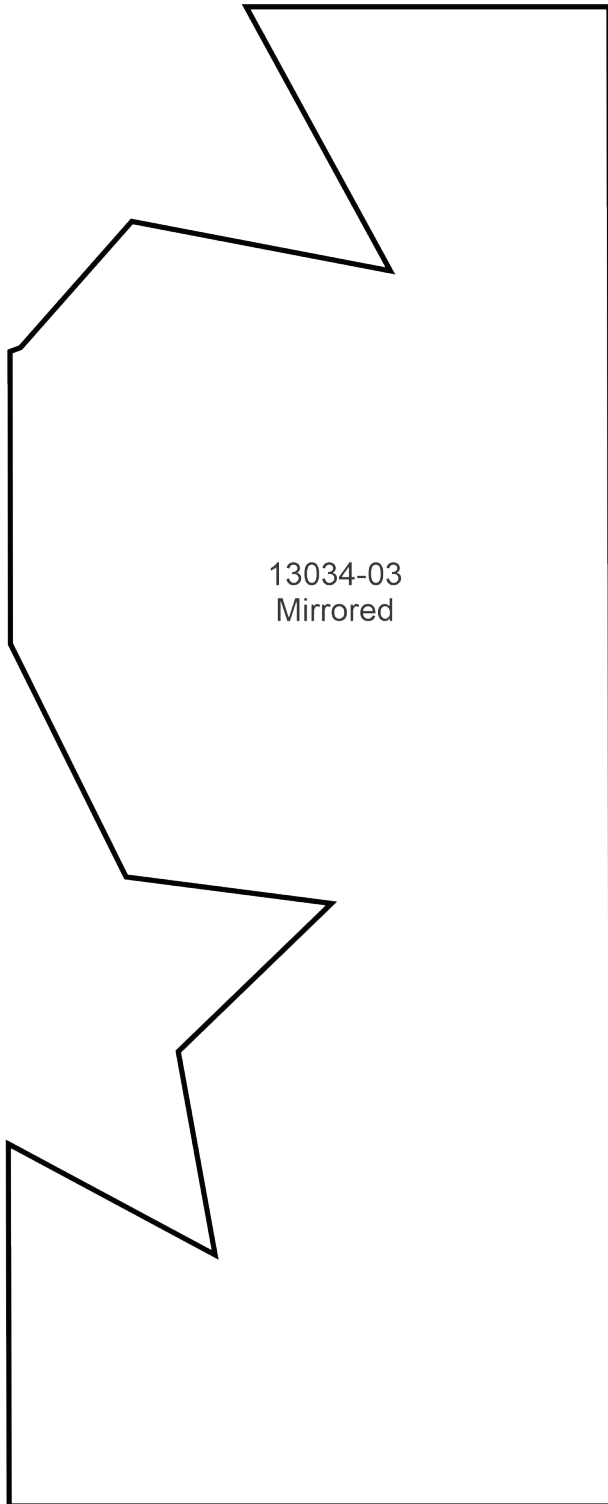
Print at 100%. No scaling. This box measures 1" x 1". Use the box as an accuracy guide when printing templates.



MIRRORED PATTERNS



Print at 100%. No scaling. This box measures 1" x 1". Use the box as an accuracy guide when printing templates.



13034-03
Mirrored



13034-04
Mirrored

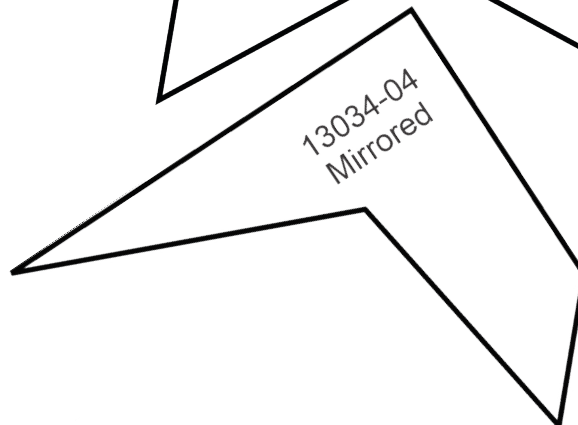
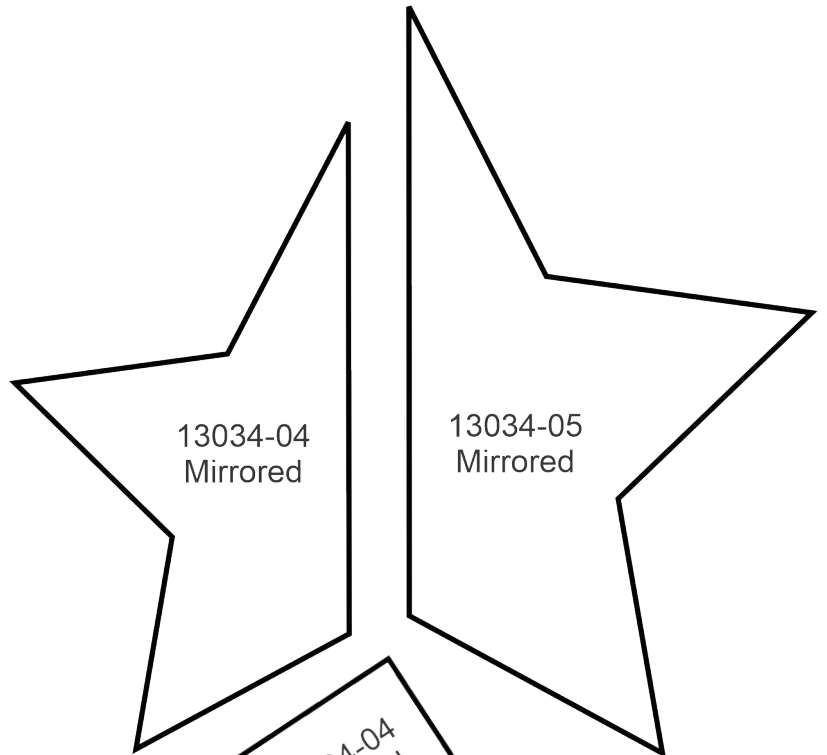
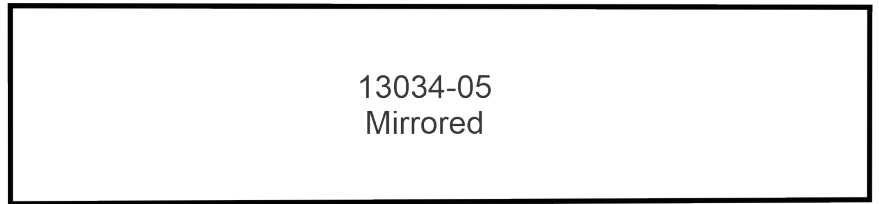
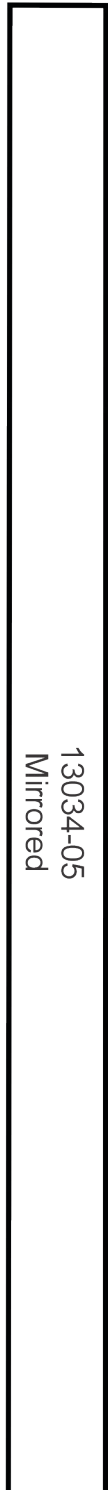


13034-04
Mirrored

MIRRORED PATTERNS



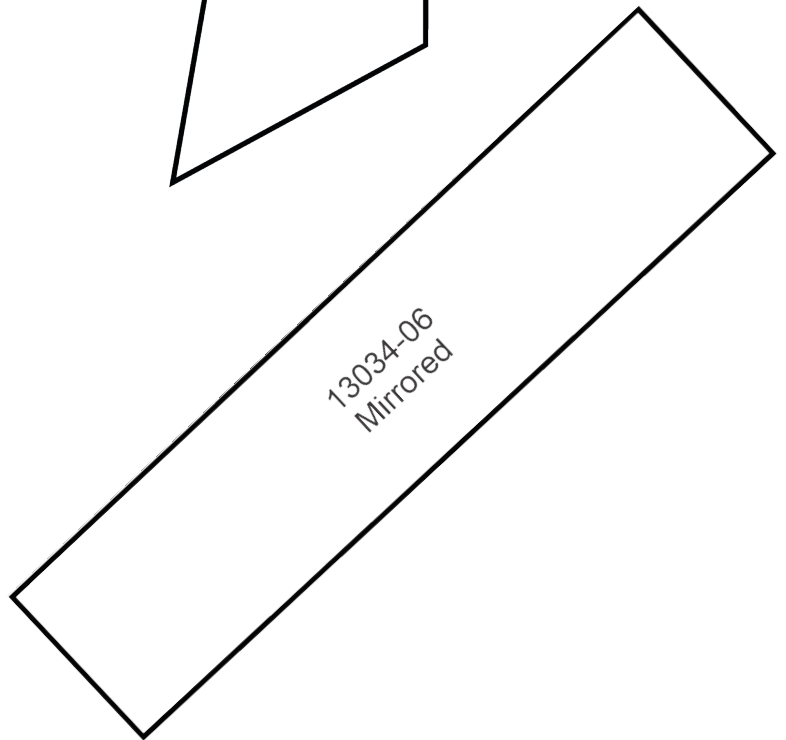
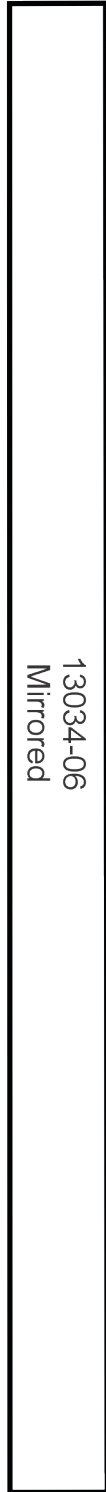
Print at 100%. No scaling. This box measures 1" x 1". Use the box as an accuracy guide when printing templates.



MIRRORED PATTERNS



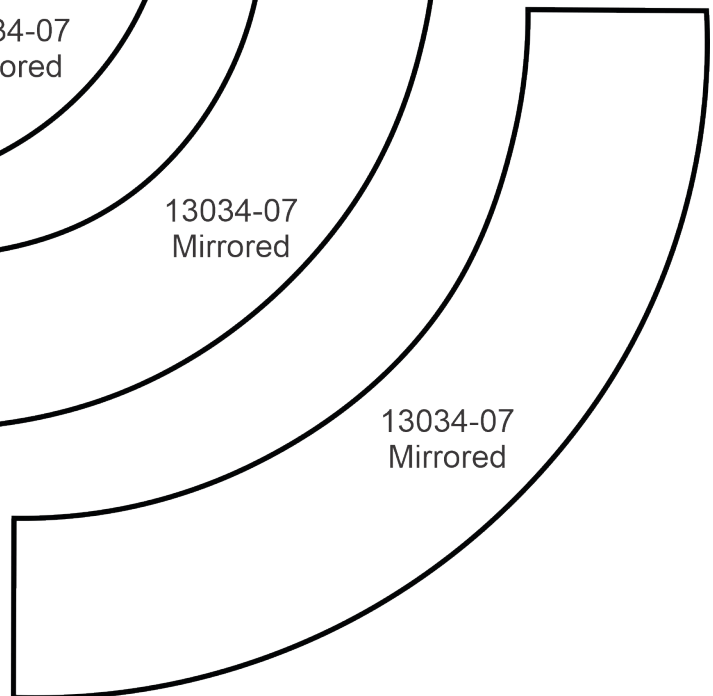
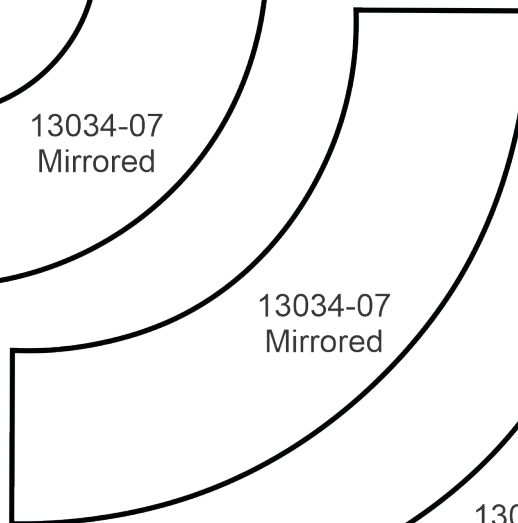
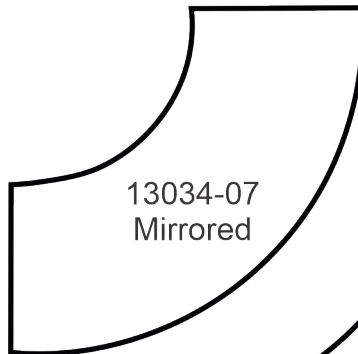
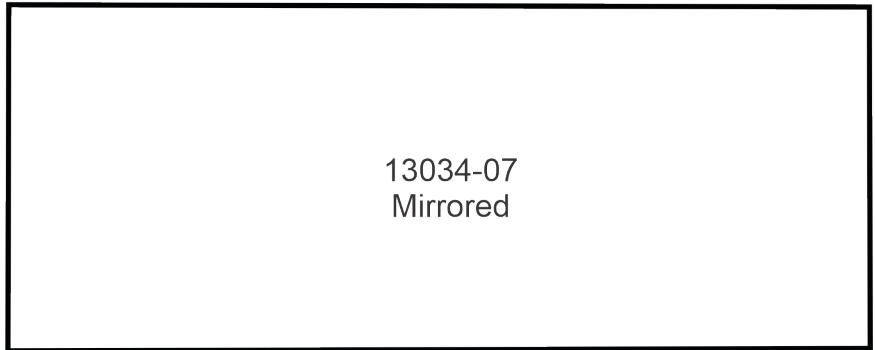
Print at 100%. No scaling. This box measures 1" x 1". Use the box as an accuracy guide when printing templates.



MIRRORED PATTERNS



Print at 100%. No scaling. This box measures 1" x 1". Use the box as an accuracy guide when printing templates.



MIRRORED PATTERNS



Print at 100%. No scaling. This box measures 1" x 1". Use the box as an accuracy guide when printing templates.

