

Note: Some designs in this collection may have been created using unique special stitches and/or techniques. To preserve design integrity when rescaling or rotating designs in your software, always rescale or rotate designs using the handles directly on-screen.



21025-01 Day 1
5.63 X 6.99 in.
143.00 X 177.55 mm
13,870 St. ⚡ ⚙ L



21025-02 Day 2
5.61 X 6.99 in.
142.49 X 177.55 mm
13,418 St. ⚡ ⚙ L



21025-03 Day 3
5.61 X 6.99 in.
142.49 X 177.55 mm
9,925 St. ⚡ ⚙ L



21025-04 Day 4
5.61 X 6.99 in.
142.49 X 177.55 mm
11,926 St. ⚡ ⚙ L



21025-05 Day 5
5.61 X 7.00 in.
142.49 X 177.80 mm
11,664 St. ⚡ ⚙ L



21025-06 Day 6
5.61 X 6.99 in.
142.49 X 177.55 mm
13,155 St. ⚡ ⚙ L



21025-07 Day 7
5.61 X 6.99 in.
142.49 X 177.55 mm
12,359 St. ⚙ L



21025-08 Day 8
5.61 X 6.99 in.
142.49 X 177.55 mm
14,496 St. ⚡ ⚙ L



21025-09 Day 9
5.61 X 7.08 in.
142.49 X 179.83 mm
13,450 St. ⚙ L



21025-10 Day 10
5.61 X 6.99 in.
142.49 X 177.55 mm
17,004 St. ⚙ L



21025-11 Day 11
5.61 X 6.99 in.
142.49 X 177.55 mm
13,082 St. ⚙ L



21025-12 Day 12
5.61 X 6.99 in.
142.49 X 177.55 mm
17,657 St. ⚡ ⚙ L

⚡ Design contains a loose fill.

⚙ Some solid areas shown are not stitched.

L Design is larger than 5" (127 mm) in either direction.

S Design is smaller than 1.5" (38.1 mm) in either direction.

It is a violation of Copyright law to make and distribute copies of electronic designs or artwork.

Electronic designs are licensed to the original purchaser for use at one location. ©2015 OESD, LLC. All rights reserved.

Note: Some designs in this collection may have been created using unique special stitches and/or techniques. To preserve design integrity when rescaling or rotating designs in your software, always rescale or rotate designs using the handles directly on-screen.



21025-13 Day 13
5.61 X 6.99 in.
142.49 X 177.55 mm
15,897 St. ⚡ ⚙ L



21025-14 Day 14
5.61 X 6.99 in.
142.49 X 177.55 mm
14,788 St. ⚙ L



21025-15 Day 15
5.61 X 6.99 in.
142.49 X 177.55 mm
12,585 St. ⚡ ⚙ L



21025-16 Day 16
5.62 X 6.99 in.
142.75 X 177.55 mm
12,390 St. ⚙ L



21025-17 Day 17
5.64 X 6.99 in.
143.26 X 177.55 mm
16,461 St. ⚙ L



21025-18 Day 18
5.62 X 6.99 in.
142.75 X 177.55 mm
11,902 St. ⚙ L



21025-19 Day 19
5.61 X 6.99 in.
142.49 X 177.55 mm
16,254 St. ⚙ L



21025-20 Day 20
5.63 X 6.99 in.
143.00 X 177.55 mm
13,703 St. ⚙ L



21025-21 Day 21
5.61 X 6.99 in.
142.49 X 177.55 mm
13,442 St. ⚙ L



21025-22 Day 22
5.61 X 6.99 in.
142.49 X 177.55 mm
18,554 St. ⚙ L



21025-23 Day 23
5.61 X 6.99 in.
142.49 X 177.55 mm
15,222 St. ⚙ L



21025-24 Day 24
5.61 X 6.99 in.
142.49 X 177.55 mm
17,001 St. ⚡ ⚙ L

⚡ Design contains a loose fill.

⚙ Some solid areas shown are not stitched.

L Design is larger than 5" (127 mm) in either direction.

S Design is smaller than 1.5" (38.1 mm) in either direction.

It is a violation of Copyright law to make and distribute copies of electronic designs or artwork.

Electronic designs are licensed to the original purchaser for use at one location. ©2015 OESD, LLC. All rights reserved.

Note: Some designs in this collection may have been created using unique special stitches and/or techniques. To preserve design integrity when rescaling or rotating designs in your software, always rescale or rotate designs using the handles directly on-screen.



21025-25 Day 25
5.61 X 6.99 in.
142.49 X 177.55 mm
11,692 St. ❄️ L



21025-26 Day 26
5.61 X 6.99 in.
142.49 X 177.55 mm
13,075 St. ❄️ L



21025-27 Day 27
5.61 X 6.99 in.
142.49 X 177.55 mm
14,288 St. ❄️ L



21025-28 Day 28
5.61 X 6.99 in.
142.49 X 177.55 mm
12,665 St. ❄️ L



21025-29 Day 29
5.61 X 6.99 in.
142.49 X 177.55 mm
18,375 St. ❄️❄️ L



21025-30 Day 30
5.61 X 6.99 in.
142.49 X 177.55 mm
12,297 St. ❄️ L



21025-31 Day 31
5.61 X 6.99 in.
142.49 X 177.55 mm
15,095 St. ❄️❄️ L

❄️ Design contains a loose fill.

❄️ Some solid areas shown are not stitched.

L Design is larger than 5" (127 mm) in either direction.

S Design is smaller than 1.5" (38.1 mm) in either direction.

It is a violation of Copyright law to make and distribute copies of electronic designs or artwork.

Electronic designs are licensed to the original purchaser for use at one location. ©2015 OESD, LLC. All rights reserved.



Merry & Bright: 31 Days to Stitch, Turn & Celebrate

By Amanda Greene / #21025 / 31 Designs

Listings below indicate color sample, stitching order and suggested thread color number. Most numbers indicate Isacord thread. Colors beginning with 20501 refer to YLI Fine Metallics, 7 refer to Yenmet Metallic, 8 refer to YLI Variations Variegated Thread and 9 refer to Isacord Multicolor Variegated.

21025-01 Day 1

1. Ribbon & Fold Placement Lines.....	0020
2. Background Fabric Tackdown.....	0020
3. White Detail.....	0015
4. Light Yellow Detail.....	0640
5. Gold Detail.....	0622
6. Medium Brown Head & Wing Detail.....	0933
7. Dark Brown Chainstitch.....	0945
8. Dark Green Leaves & Stems.....	5643
9. Light Green Leaves & Pears.....	0352
10. Medium Green Shading.....	5833
11. Beak & Legs.....	0111
12. Red Detail.....	2101
13. Eye.....	0020
14. Folded Top Fabric Placement.....	0020
15. Folded Top Fabric Tackdown.....	5833
16. White Swirls.....	0015
17. White Number.....	0015
18. Ribbon Tackdown & Seam.....	0020

21025-02 Day 2

1. Ribbon & Fold Placement Lines.....	0020
2. Background Fabric Tackdown.....	0020
3. Bulb.....	2101
4. Bulb Shading.....	2022
5. Bulb Highlights.....	7003
6. Bulb Tops.....	0111
7. Dark Green Detail.....	5643
8. Light Green Detail.....	0352
9. White Detail.....	0015
10. Red Outer Border.....	2101
11. Folded Top Fabric Placement.....	0020
12. Folded Top Fabric Tackdown.....	2101
13. White Swirls.....	0015
14. White Number.....	0015
15. Ribbon Tackdown & Seam.....	0020

21025-03 Day 3

1. Ribbon & Fold Placement Lines.....	0020
2. Background Fabric Tackdown.....	0020
3. Red Stocking.....	2101
4. Dark Red Shading & Outlines.....	2022
5. Dark Blue Sock & Detail.....	4531
6. Dark Green Toe & Heel.....	5643
7. Light Green Detail.....	0352
8. Light Blue Detail.....	4240
9. Stocking Cuff & Dots.....	0015
10. Light Gray Detail.....	0184
11. Dark Gray Detail.....	0111
12. Folded Top Fabric Placement.....	0020
13. Folded Top Fabric Tackdown.....	5643
14. White Swirls.....	0015
15. White Number.....	0015
16. Ribbon Tackdown & Seam.....	0020

21025-04 Day 4

1. Ribbon & Fold Placement Lines.....	0020
2. Background Fabric Tackdown.....	0020
3. Light Blue Tree.....	4240
4. Green Tree Detail.....	5833
5. Tree Trunks.....	0933
6. Dark Green Detail.....	5643
7. Gold Star.....	0622
8. Red Detail.....	2101
9. Folded Top Fabric Placement.....	0020
10. Folded Top Fabric Tackdown.....	0352
11. White Swirls.....	0015
12. White Number.....	0015
13. Ribbon Tackdown & Seam.....	0020

21025-05 Day 5

1. Ribbon & Fold Placement Lines.....	0020
2. Background Fabric Tackdown.....	0020
3. White Detail.....	0015
4. Tan Detail.....	0552
5. Light Brown Detail.....	1252
6. Dark Brown Shading & Outlines.....	0933
7. Metallic Silver Antlers.....	7005
8. Dark Gray Antlers.....	0111
9. Eye & Nose.....	0020
10. Folded Top Fabric Placement.....	0020
11. Folded Top Fabric Tackdown.....	2101
12. White Swirls.....	0015
13. White Number.....	0015
14. Ribbon Tackdown & Seam.....	0020

21025-06 Day 6

1. Ribbon & Fold Placement Lines.....	0020
2. Background Fabric Tackdown.....	0020
3. Green Lid.....	5833
4. White Detail.....	0015
5. Light Yellow Detail.....	0640
6. Red Detail.....	2101
7. Leaves.....	5643
8. Mail Details.....	0184
9. Stamp.....	4240
10. Metallic Silver Detail.....	7005
11. Dark Red Outlines.....	2022
12. Folded Top Fabric Placement.....	0020
13. Folded Top Fabric Tackdown.....	5833
14. White Swirls.....	0015
15. White Number.....	0015
16. Ribbon Tackdown & Seam.....	0020

21025-07 Day 7

1. Ribbon & Fold Placement Lines.....	0020
2. Background Fabric Tackdown.....	0020
3. Snowflake.....	0015
4. Shimmers.....	7003
5. Folded Top Fabric Placement.....	0020
6. Folded Top Fabric Tackdown.....	2101
7. White Swirls.....	0015
8. White Number.....	0015
9. Ribbon Tackdown & Seam.....	0020

21025-08 Day 8

1. Ribbon & Fold Placement Lines.....	0020
2. Background Fabric Tackdown.....	0020
3. Dove.....	0015
4. Light Blue Shading.....	4240
5. Dark Blue Detail.....	4531
6. Stem & Leaves.....	5833
7. Beak.....	0552
8. Eye.....	0020
9. Folded Top Fabric Placement.....	0020
10. Folded Top Fabric Tackdown.....	5833
11. White Swirls.....	0015
12. White Number.....	0015
13. Ribbon Tackdown & Seam.....	0020

21025-09 Day 9

1. Ribbon & Fold Placement Lines.....	0020
2. Background Fabric Tackdown.....	0020
3. Green Detail.....	5833
4. Skin.....	1060
5. Hair & Hammer Handle.....	0933
6. Shirt & Shoes.....	5643
7. Cheeks.....	2155
8. Skin Outlines.....	1252
9. Tools.....	0111
10. Top of Hat.....	5643
11. Hat & Driver Handle.....	2101
12. Black Detail.....	0020
13. Gold Detail.....	0622
14. Red Swirls.....	2022
15. Folded Top Fabric Placement.....	0020
16. Folded Top Fabric Tackdown.....	2101
17. White Swirls.....	0015
18. White Number.....	0015
19. Ribbon Tackdown & Seam.....	0020

21025-10 Day 10

1. Ribbon & Fold Placement Lines.....	0020
2. Background Fabric Tackdown.....	0020
3. Wreath.....	5833
4. Dark Green on Wreath.....	5643
5. Light Green Leaves.....	0352
6. Light Green Satin Details.....	5833
7. Red Detail.....	2101
8. Folded Top Fabric Placement.....	0020
9. Folded Top Fabric Tackdown.....	5833
10. White Swirls.....	0015
11. White Number.....	0015
12. Ribbon Tackdown & Seam.....	0020

21025-11 Day 11

1. Ribbon & Fold Placement Lines.....	0020
2. Background Fabric Tackdown.....	0020
3. Bells.....	0184
4. White Bell Detail.....	0015
5. Metallic Silver Detail.....	7005
6. Dark Gray Detail.....	0111
7. Ribbon.....	2101
8. White Ribbon Detail.....	0015
9. Vines & Leaves.....	5643
10. Berries.....	2022
11. Folded Top Fabric Placement.....	0020
12. Folded Top Fabric Tackdown.....	2101
13. White Swirls.....	0015
14. White Number.....	0015
15. Ribbon Tackdown & Seam.....	0020

21025-12 Day 12

1. Ribbon & Fold Placement Lines.....	0020
2. Background Fabric Tackdown.....	0020
3. Skin.....	1060
4. Cheeks.....	2155
5. Hair, Arms & Legs.....	0015
6. Red Detail.....	2101
7. Hair, Arms & Legs Detail.....	0184
8. Gold Detail.....	0622
9. Black Detail.....	0020
10. Gray Highlights.....	0111
11. Light Yellow Detail.....	0640
12. Dark Green Detail.....	5643
13. Medium Green Detail.....	5833
14. Folded Top Fabric Placement.....	0020
15. Folded Top Fabric Tackdown.....	5833
16. White Swirls.....	0015
17. White Number.....	0015
18. Ribbon Tackdown & Seam.....	0020



Merry & Bright: 31 Days to Stitch, Turn & Celebrate

By Amanda Greene / #21025 / 31 Designs

Listings below indicate color sample, stitching order and suggested thread color number. Most numbers indicate Isacord thread. Colors beginning with 20501 refer to YLI Fine Metallics, 7 refer to Yenmet Metallic, 8 refer to YLI Variations Variegated Thread and 9 refer to Isacord Multicolor Variegated.

21025-13 Day 13

1. Ribbon & Fold Placement Lines.....	0020
2. Background Fabric Tackdown.....	0020
3. Eyes, Body & Hat Bobble.....	0015
4. Face Shading.....	0640
5. Brown Detail.....	0933
6. Eyes.....	0020
7. Dark Green Perch.....	5643
8. Gold Detail.....	0622
9. Dark Brown Detail.....	0945
10. Red Hat.....	2101
11. Hat Cuff.....	0015
12. Light Gray Cuff & Bobble Shading.....	0184
13. Folded Top Fabric Placement.....	0020
14. Folded Top Fabric Tackdown.....	2101
15. White Swirls.....	0015
16. White Number.....	0015
17. Ribbon Tackdown and Seam.....	0020

21025-14 Day 14

1. Ribbon & Fold Placement Lines.....	0020
2. Background Fabric Tackdown.....	0020
3. White Detail.....	0015
4. Green Detail.....	5833
5. Light Yellow Detail.....	0640
6. Red Detail.....	2101
7. Dark Red Detail.....	2022
8. Light Green Detail.....	0352
9. Green Detail.....	5833
10. Gray Detail.....	0111
11. Folded Top Fabric Placement.....	0020
12. Folded Top Fabric Tackdown.....	5833
13. White Swirls.....	0015
14. White Number.....	0015
15. Ribbon Tackdown & Seam.....	0020

21025-15 Day 15

1. Ribbon & Fold Placement Lines.....	0020
2. Background Fabric Tackdown.....	0020
3. Trunk.....	0945
4. Tree.....	5643
5. Red Detail.....	2101
6. Light Yellow Bulb.....	0640
7. Dark Blue Bulb.....	4531
8. Light Blue Bulbs.....	4240
9. Gold Detail.....	0622
10. Light Green Detail.....	0352
11. Dark Red Detail.....	2022
12. White Detail.....	0015
13. Folded Top Fabric Placement.....	0020
14. Folded Top Fabric Tackdown.....	2101
15. White Swirls.....	0015
16. White Number.....	0015
17. Ribbon Tackdown & Seam.....	0020

21025-16 Day 16

1. Ribbon & Fold Placement Lines.....	0020
2. Background Fabric Tackdown.....	0020
3. Dark Blue Detail.....	4531
4. Leaves.....	5833
5. Leaf Shading.....	5643
6. Leaf Veins.....	0352
7. Leaf Outlines.....	5643
8. Berries.....	2101
9. Berry Highlights.....	0015
10. Folded Top Fabric Placement.....	0020
11. Folded Top Fabric Tackdown.....	5643
12. White Swirls.....	0015
13. White Number.....	0015
14. Ribbon Tackdown & Seam.....	0020

21025-17 Day 17

1. Ribbon & Fold Placement Lines.....	0020
2. Background Fabric Tackdown.....	0020
3. White Wings.....	0015
4. Wing Highlights.....	7003
5. Wing Detail & Outlines.....	0184
6. Gown.....	2101
7. Skin.....	1060
8. Hair & Nose.....	0933
9. Dark Red Detail.....	2022
10. Cheeks.....	2155
11. Eyes & Mouth.....	0020
12. Folded Top Fabric Placement.....	0020
13. Folded Top Fabric Tackdown.....	0352
14. White Swirls.....	0015
15. White Number.....	0015
16. Ribbon Tackdown & Seam.....	0020

21025-18 Day 18

1. Ribbon & Fold Placement Lines.....	0020
2. Background Fabric Tackdown.....	0020
3. Candy Cane.....	0015
4. Red Stripes & Ribbon.....	2101
5. Dark Red Detail & Outlines.....	2022
6. Leaves.....	5643
7. White Dots.....	0015
8. Green Corner Detail.....	5643
9. Folded Top Fabric Placement.....	0020
10. Folded Top Fabric Tackdown.....	2101
11. White Swirls.....	0015
12. White Number.....	0015
13. Ribbon Tackdown & Seam.....	0020

21025-19 Day 19

1. Ribbon & Fold Placement Lines.....	0020
2. Background Fabric Tackdown.....	0020
3. Light Green Package.....	0352
4. Dark Green Package & Stripes.....	5643
5. Red Package.....	2101
6. White Spots.....	0015
7. Dark Red Outlines.....	2022
8. Green Ribbon & Outlines.....	5833
9. Dark Blue Ribbon & Detail.....	4531
10. Dark Green Ribbon.....	5643
11. Folded Top Fabric Placement.....	0020
12. Folded Top Fabric Tackdown.....	5833
13. White Swirls.....	0015
14. White Number.....	0015
15. Ribbon Tackdown & Seam.....	0020

21025-20 Day 20

1. Ribbon & Fold Placement Lines.....	0020
2. Background Fabric Tackdown.....	0020
3. Snowman & Hat Band.....	0015
4. Snowman Shimmers.....	7003
5. Light Blue Shading.....	4240
6. Light Green Scarf Stripes.....	0352
7. Red Scarf Stripes.....	2101
8. Black Detail.....	0020
9. Gray Hat Detail.....	0111
10. Dark Blue Outline.....	4531
11. Arms.....	0933
12. Carrot.....	1332
13. Green Detail.....	5833
14. Folded Top Fabric Placement.....	0020
15. Folded Top Fabric Tackdown.....	2101
16. White Swirls.....	0015
17. White Number.....	0015
18. Ribbon Tackdown & Seam.....	0020

21025-21 Day 21

1. Ribbon & Fold Placement Lines.....	0020
2. Background Fabric Tackdown.....	0020
3. Red Detail.....	2101
4. Light Green Detail.....	5833
5. Dark Red Detail.....	2022
6. White Detail.....	0015
7. Dark Green Detail.....	5643
8. Light Green Outline.....	5833
9. Ornament Hooks.....	0111
10. Folded Top Fabric Placement.....	0020
11. Folded Top Fabric Tackdown.....	5833
12. White Swirls.....	0015
13. White Number.....	0015
14. Ribbon Tackdown & Seam.....	0020

21025-22 Day 22

1. Ribbon & Fold Placement Lines.....	0020
2. Background Fabric Tackdown.....	0020
3. Tree.....	5643
4. Dark Brown Detail.....	0933
5. Light Blue Detail.....	4240
6. Dark Blue Detail.....	4531
7. Light Brown Detail.....	1252
8. White Detail.....	0015
9. Dark Brown Door & Window Detail.....	0933
10. Red Detail.....	2101
11. Dark Green Dots.....	5643
12. Folded Top Fabric Placement.....	0020
13. Folded Top Fabric Tackdown.....	2101
14. White Swirls.....	0015
15. White Number.....	0015
16. Ribbon Tackdown & Seam.....	0020

21025-23 Day 23

1. Ribbon & Fold Placement Lines.....	0020
2. Background Fabric Tackdown.....	0020
3. Tan Detail.....	0552
4. Light Brown Detail.....	1252
5. Red Detail.....	2101
6. Black Detail.....	0020
7. Dark Brown Detail.....	0933
8. Folded Top Fabric Placement.....	0020
9. Folded Top Fabric Tackdown.....	5643
10. White Swirls.....	0015
11. White Number.....	0015
12. Ribbon Tackdown & Seam.....	0020

21025-24 Day 24

1. Ribbon & Fold Placement Lines.....	0020
2. Background Fabric Tackdown.....	0020
3. Skin.....	1060
4. Cheeks & Nose.....	2155
5. Red Detail.....	2101
6. Black Detail.....	0020
7. Gloves.....	5643
8. White Shading.....	0015
9. Buckle.....	0622
10. Light Gray Detail.....	0184
11. Dark Red Detail.....	2022
12. Folded Top Fabric Placement.....	0020
13. Folded Top Fabric Tackdown.....	5643
14. White Swirls.....	0015
15. White Number.....	0015
16. Ribbon Tackdown & Seam.....	0020



Merry & Bright: 31 Days to Stitch, Turn & Celebrate

By Amanda Greene / #21025 / 31 Designs

Listings below indicate color sample, stitching order and suggested thread color number. Most numbers indicate Isacord thread. Colors beginning with 20501 refer to YLI Fine Metallics, 7 refer to Yenmet Metallic, 8 refer to YLI Variations Variegated Thread and 9 refer to Isacord Multicolor Variegated.

21025-25 Day 25

1. Ribbon & Fold Placement Lines.....	0020
2. Background Fabric Tackdown.....	0020
3. Star Tan Detail.....	0552
4. Star Gold Detail.....	0622
5. Metallic Gold Detail.....	7014
6. Light Blue Detail.....	4240
7. Light Green Detail.....	5833
8. Folded Top Fabric Placement.....	0020
9. Folded Top Fabric Tackdown.....	2101
10. White Swirls.....	0015
11. White Number.....	0015
12. Ribbon Tackdown & Seam.....	0020

21025-26 Day 26

1. Ribbon & Fold Placement Lines.....	0020
2. Background Fabric Tackdown.....	0020
3. Pink Detail.....	2155
4. Dark Red Detail.....	2022
5. Red Detail.....	2101
6. Black Detail.....	0020
7. Beak.....	0622
8. Folded Top Fabric Placement.....	0020
9. Folded Top Fabric Tackdown.....	0352
10. White Swirls.....	0015
11. White Number.....	0015
12. Ribbon Tackdown & Seam.....	0020

21025-27 Day 27

1. Ribbon & Fold Placement Lines.....	0020
2. Background Fabric Tackdown.....	0020
3. White Detail.....	0015
4. Light Green Detail.....	0352
5. Dark Green Detail.....	5643
6. Metallic Silver Detail.....	7005
7. Green Detail.....	5833
8. Dark Blue Outline.....	4531
9. Light Gray Detail.....	0184
10. Ribbon.....	2101
11. Shimmers.....	7003
12. Folded Top Fabric Placement.....	0020
13. Folded Top Fabric Tackdown.....	2101
14. White Swirls.....	0015
15. White Number.....	0015
16. Ribbon Tackdown & Seam.....	0020

21025-28 Day 28

1. Ribbon & Fold Placement Lines.....	0020
2. Background Fabric Tackdown.....	0020
3. Body.....	1252
4. Hands & Feet.....	0933
5. Cheeks.....	1332
6. Black Detail.....	0020
7. White Detail.....	0015
8. Dark Brown Outlines.....	0933
9. Red Detail.....	2101
10. Green Detail.....	5833
11. Folded Top Fabric Placement.....	0020
12. Folded Top Fabric Tackdown.....	0352
13. White Swirls.....	0015
14. White Number.....	0015
15. Ribbon Tackdown & Seam.....	0020

21025-29 Day 29

1. Ribbon & Fold Placement Lines.....	0020
2. Background Fabric Tackdown.....	0020
3. White Detail.....	0015
4. Snow Shimmers.....	7003
5. Light Gray Detail.....	0184
6. Red Scarf.....	2101
7. Light Green Detail.....	0352
8. White Outline.....	0015
9. Black Detail.....	0020
10. Folded Top Fabric Placement.....	0020
11. Folded Top Fabric Tackdown.....	2101
12. White Swirls.....	0015
13. White Number.....	0015
14. Ribbon Tackdown & Seam.....	0020

21025-30 Day 30

1. Ribbon & Fold Placement Lines.....	0020
2. Background Fabric Tackdown.....	0020
3. Mittens.....	2101
4. Dark Red Shading.....	2022
5. White Detail.....	0015
6. Dark Blue Detail.....	4531
7. Dark Green Detail.....	5643
8. Folded Top Fabric Placement.....	0020
9. Folded Top Fabric Tackdown.....	0352
10. White Swirls.....	0015
11. White Number.....	0015
12. Ribbon Tackdown & Seam.....	0020

21025-31 Day 31

1. Ribbon & Fold Placement Lines.....	0020
2. Background Fabric Tackdown.....	0020
3. Snowman.....	0015
4. Light Gray Shading.....	0184
5. Shimmers.....	7003
6. Hat.....	2101
7. Dark Gray Outlines.....	0111
8. Arms.....	0933
9. Light Green Detail.....	0352
10. Green Detail.....	5833
11. Carrot.....	1332
12. Black Detail.....	0020
13. White Detail.....	0015
14. Folded Top Fabric Placement.....	0020
15. Folded Top Fabric Tackdown.....	2101
16. White Swirls.....	0015
17. White Number.....	0015
18. Ribbon Tackdown & Seam.....	0020

Isacord Thread Colors Used in "Merry & Bright: 31 Days to Stitch, Turn & Celebrate"

By Amanda Greene
Collection #21025

0015 White	0933 Redwood	4240 Spearmint
0020 Black	0945 Pine Bark	4531 Caribbean
0111 Whale	1060 Shrimp Pink	5643 Green Dust
0184 Pearl	1252 Dark Tan	5833 Lima Bean
0352 Marsh	1332 Harvest	7003 Pearl / Iridescent
0552 Flax	2022 Rio Red	7005 Silver Metallic
0622 Star Gold	2101 Country Red	7014 Gold Type 2 Metallic
0640 Parchment	2155 Pink Tulip	

Supplies

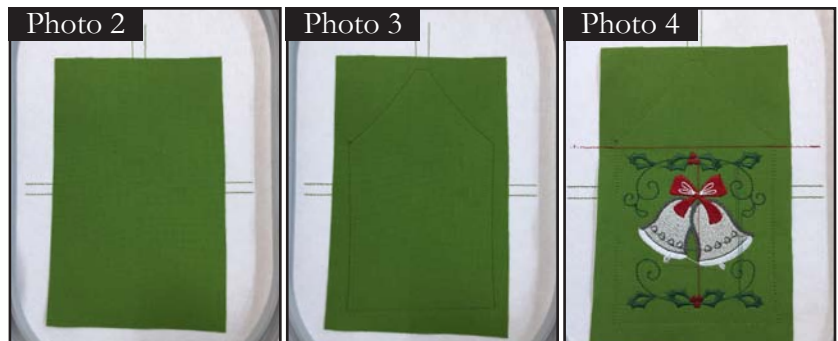
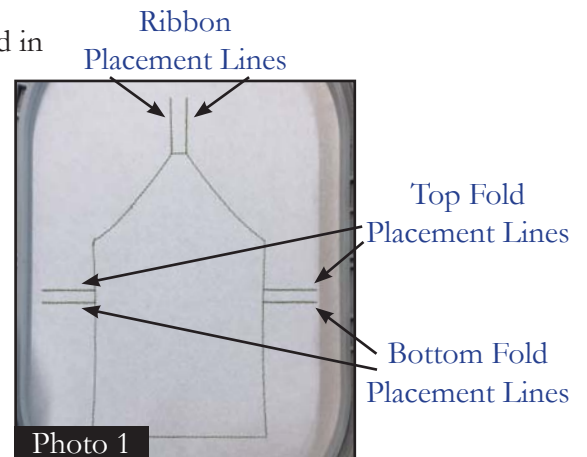
- 1/8 yd. or 4 1/2" x 13" piece red or various shades of green fabric per stitch 'n' turn (Folded Top Fabric & Upper Back Fabric) (total 1 3/8 yds. for 31 stitch 'n' turns)
- 1/8 yd. or 4" x 6 1/2" piece light colored fabric per stitch 'n' turn (Background Fabric) (total 3/4 yd. for 31 stitch 'n' turns)
- 1/8 yd. or 4" x 7" piece printed coordinating fabric per stitch 'n' turn (Lower Back Fabric) (total 3/4 yd. for 31 stitch 'n' turns)
- 1/8 yd. (3/8") ribbon per stitch 'n' turn (Hanger)(4 yds. for 31 stitch 'n' turns)
- Medium weight tear away stabilizer (2 layers per hooping)
- Isacord embroidery threads
- Temporary spray adhesive
- Embroidery machine

Cut

- (1) 4" x 6 1/2" piece light colored fabric per stitch 'n' turn (Background Fabric)
- (1) 4" x 5" piece red or various shades of green fabric per stitch 'n' turn (fold in half to measure 4" x 2 1/2") (Folded Top Fabric)
- (1) 4" x 7" piece red or various shades of green fabric per stitch 'n' turn (fold in half to measure 4" x 3 1/2") (Upper Back Fabric)
- (1) 4" x 7" piece printed coordinating fabric per stitch 'n' turn (fold in half to measure 4" x 3 1/2") (Lower Back Fabric)
- (1) 4 1/2" piece ribbon per stitch 'n' turn (Hanger)

Embroider

- Hoop 2 layers of medium weight tear away stabilizer.
- Stitch the first stitch called Ribbon & Fold Placement Lines.
- PHOTO 1**
- Using temporary spray adhesive, spray the Ribbon & Fold Placement Lines. Center and place the background fabric right side up over the stitching lines. **PHOTO 2**
- Stitch the second color called Background Fabric Tackdown, matching thread color to the fabric. **PHOTO 3**
- Stitch the next several colors for the design.
- Stitch the next color called Folded Top Fabric Placement, matching thread color to the Folded Top Fabric. **PHOTO 4**
- Trim the jump thread.
- Wrong sides together, fold in half Folded Top Fabric, Upper Back Fabric & Lower Back Fabric pieces. Press.



- Center and place the Folded Top Fabric with folded edge in line with placement stitches. **PHOTO 5**

- Stitch the next color called Folded Top Fabric Tackdown. **PHOTO 6**

- Stitch the next two colors. **PHOTO 7**

NOTE: The same thread color is listed for both colors. They are separate color changes so that different thread colors can be used, if desired. These two stitches can be left out if the number is not wanted on the finished project.

- Fold ribbon (hanger) in half and place with raw edges lining up with raw edge of fabric and between the ribbon placement stitches at the top of the design. Use a piece of tape to hold in place.

NOTE: To make sure all the ribbons are the exact same length, line the folded edge up with the bottom of the number. **PHOTO 8**

- Using the fold placement lines stitched earlier, center and place the Lower Back Fabric first, lining up folded edge with the top fold placement line. **PHOTO 9**

- Then center and place the Upper Back Fabric overlapping with the bottom fabric piece and lining up folded edge with the bottom fold placement line. **PHOTO 10**

NOTE: Use piece of tape over the two back fabric pieces on left side to make sure embroidery foot doesn't catch the fabric when stitching the next color. **PHOTO 11**

- Stitch the last color called Ribbon Tackdown and Seam. **PHOTO 12**

- Remove the hoop from the machine and the stitch n turn from the hoop.

- Trim the edges and corners. **PHOTO 13**

- Turn the stitch 'n' turn right side out, starting with the top. Press. **PHOTO 14**

- Place a gift card in the back, use it as a gift tag or ornament, or stitch all 31 designs and create a Holiday Calendar bunting!

