



#51266
8 DESIGNS



LOOK ON THE BRIGHT SIDE

It is a violation of Copyright law to make and distribute copies of electronic designs or artwork.
Electronic designs are licensed to the original purchaser for use at one location. ©2021 OESD, LLC. All rights reserved.

MATERIALS



Isacord Thread Colors

0010 Silky White
0108 Cobblestone
0131 Smoke
0520 Daffodil
0622 Star Gold
1902 Poinsettia
2160 Iced Pink
2508 Hot Pink
2520 Garden Rose
2530 Rose
3654 Blue Shadow
4174 Charcoal
7008 (S11) 10 kt. Gold

***Project instructions included after design list**

DESIGNS



Note: Some designs in this collection may have been created using unique special stitches and/or techniques. To preserve design integrity when rescaling or rotating designs in your software, always rescale or rotate designs using the handles directly on-screen.

FABRIC REQUIRED

51266-01 Flamingo Frames

Size Inches: Size mm: Stitch Count:
6.52 X 3.39 in. 165.6 X 86.1 mm 10160 St.



- 1. Pink Fabric Placement Stitch..... 2530
- 2. Cut Line and Tackdown 2530
- 3. Medium Pink Detail..... 2530
- 4. Dark Pink Cover Stitch.....2520
- 5. Light Pink Detail..... 2160
- 6. Charcoal Detail..... 4174
- 7. Gray Detail0108

FABRIC REQUIRED

51266-02 Cat Frames

Size Inches: Size mm: Stitch Count:
6.66 X 2.62 in. 169.3 X 66.7 mm 4739 St.



- 1. Pink Fabric Placement Stitch..... 0622
- 2. Cut Line and Tackdown 0622
- 3. Gold Cover Stitch and Detail 0622
- 4. Gold Metallic Detail.....7008
- 5. Light Yellow Detail0520

DESIGNS



Note: Some designs in this collection may have been created using unique special stitches and/or techniques. To preserve design integrity when rescaling or rotating designs in your software, always rescale or rotate designs using the handles directly on-screen.

FABRIC REQUIRED

51266-03 Heart Frames

Size Inches: Size mm: Stitch Count:
6.50 X 2.55 in. 165.2 X 64.7 mm 9638 St.

- 1. Black Fabric Placement Stitch..... 2508
- 2. Cut Line and Tackdown 2508
- 3. Dark Pink Detail..... 2508
- 4. Medium Pink Cover Stitch and Detail..... 2530



FABRIC REQUIRED

51266-04 Aviator Frames

Size Inches: Size mm: Stitch Count:
6.53 X 2.57 in. 165.8 X 65.3 mm 4837 St.

- 1. Gold Fabric Placement Stitch 0622
- 2. Cut Line and Tackdown 0622
- 3. Gold Cover Stitch and Detail 0622
- 4. Gold Metallic Detail..... 7008
- 5. Yellow Detail..... 0520



DESIGNS



Note: Some designs in this collection may have been created using unique special stitches and/or techniques. To preserve design integrity when rescaling or rotating designs in your software, always rescale or rotate designs using the handles directly on-screen.

FABRIC REQUIRED

51266-05 Silver Frames

Size Inches: Size mm: Stitch Count:

6.51 X 2.30 in. 165.4 X 58.4 mm 8321 St.

- 1. Blue Fabric Placement Stitch 0131
- 2. Cut Line and Tackdown 0131
- 3. Light Gray Detail..... 0131
- 4. Dark Gray Cover Stitch.....0108
- 5. White Detail..... 0010



FABRIC REQUIRED

51266-06 Slat Frames

Size Inches: Size mm: Stitch Count:

6.54 X 2.74 in. 166.2 X 69.6 mm 13138 St.

- 1. Blue Fabric Placement Stitch 0622
- 2. Cut Line and Tackdown 0622
- 3. Gold Cover Stitch 0622
- 4. Yellow Detail..... 0520



DESIGNS



Note: Some designs in this collection may have been created using unique special stitches and/or techniques. To preserve design integrity when rescaling or rotating designs in your software, always rescale or rotate designs using the handles directly on-screen.

51266-07 Look on the Brightside

Size Inches: Size mm: Stitch Count:
6.49 X 4.23 in. 164.9 X 107.4 mm 12075 St.

- 1. Red Detail 1902
- 2. Blue Detail 3654
- 3. Gold Detail 0622



51266-08 Here Comes the Sun

Size Inches: Size mm: Stitch Count:
6.54 X 3.65 in. 166.1 X 92.7 mm 9625 St.

- 1. Red Detail 1902
- 2. Gold Detail 0622



MATERIALS



Stabilizers

- OESD Ultra Clean and Tear Fusible

Fabrics/Textiles

- Luxe Sparkle Vinyl by OESD
- Cotton background fabric

Notions & Tools

- Expert Embroidery Tape TearAway
- OESD Perfect Embroidery Press Cloth
- Applique scissors
- Embroidery Needle Sharp 75/11

Isacord Thread Colors

- Per thread chart

EMBROIDERY



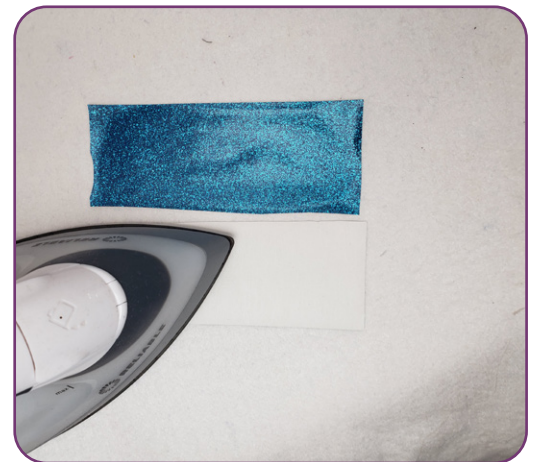
Step 1

- Apply 2 layers of Ultra Clean and Tear Fusible to the back of the background fabric.
- Hoop fabric.



Step 2

- Cut a piece of Luxe Sparkle Vinyl 2.5" x 6".
- Place face down on a Perfect Embroidery Press Cloth and press if necessary.

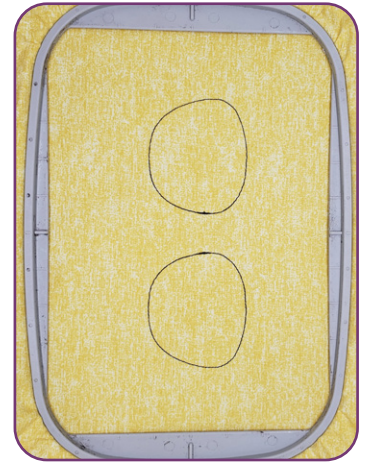


EMBROIDERY



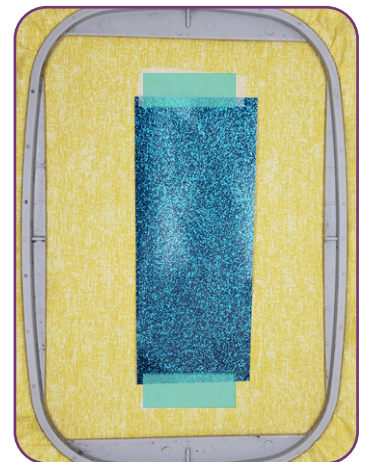
Step 3

- Load the machine with light grey thread.
- Stitch Machine Step 1, Blue Fabric Placement Stitch.



Step 4

- Remove the hoop from the machine, but NOT the project from the hoop. Lay the hoop on a flat surface.
- Place Luxe Sparkle Vinyl right side up, over the placement stitch, covering entirely.
- Tape in place to secure.
- Return the hoop to the machine.

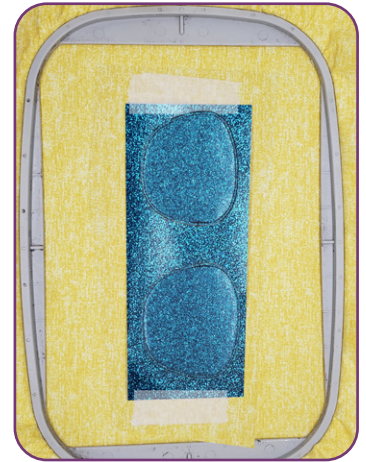


EMBROIDERY



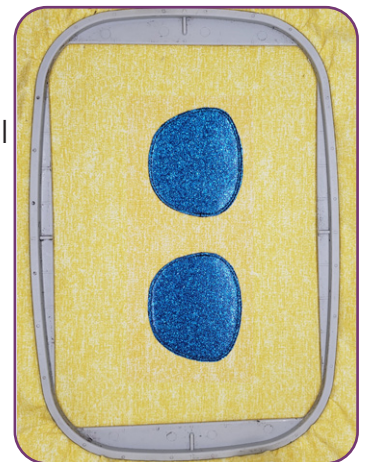
Step 5

- Stitch Machine Step 2, Cut Line and Tackdown.



Step 6

- Remove the hoop from the machine, but NOT the project from the hoop. Lay on a flat surface.
- Trim the excess fabric as close to the cut line stitching as possible.
- Note: If the outermost row of stitching is accidentally cut, the inner stitches will still hold the applique in place.

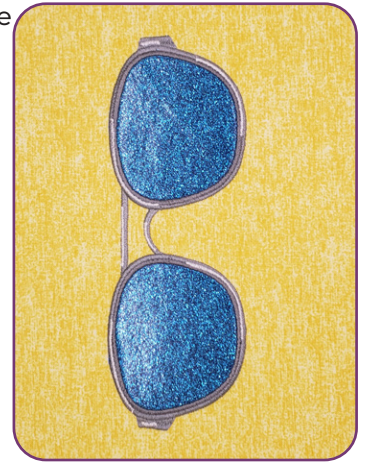


EMBROIDERY



Step 7

- Return the hoop to the machine and stitch the remaining steps according to the thread chart.
- Remove the project from the hoop and any excess stabilizer from the project. Press face down on a Perfect Embroidery Press Cloth.



PRE-CUT APPLIQUE



Stabilizers

- OESD Ultra Clean and Tear Fusible
- OESD Applique Fuse and Fix
- OESD Stitch20

Fabrics/Textiles

- Luxe Sparkle Vinyl by OESD
- Cotton background fabric

Notions & Tools

- Perfect Embroidery Press Cloth
- Embroidery Needle Sharp 75/11
- Scissors

Isacord Thread Colors

- Per thread chart
- Match bobbin thread to top thread

EMBROIDERY



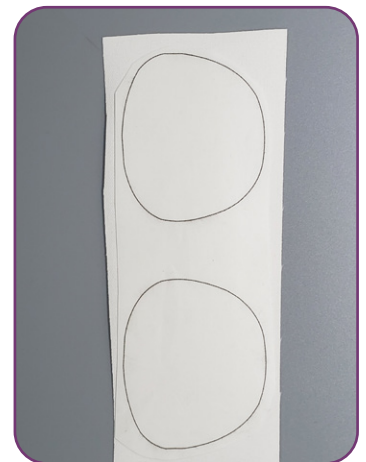
Step 1

- Print the mirrored version of the required template (100% or 1:1 ratio) onto the paper side of Applique Fuse and Fix.
- Roughly cut out the template about a 1/4" out-side of the line.



Step 2

- Fuse the trimmed template to the back of the Luxe Sparkle Vinyl with the paper side of the printed template up.
- Hold the iron on the template for 10-15 seconds for a secure fuse.

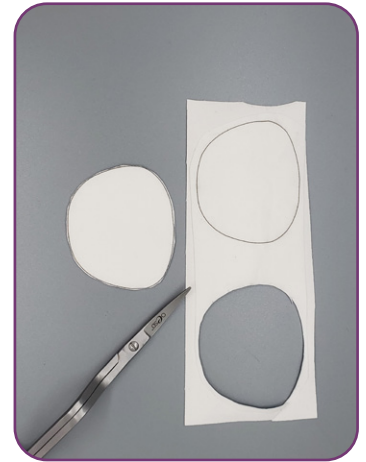


EMBROIDERY



Step 3

- Trim the prepared appliques precisely on the outer edge of the black outline. Set aside.



Step 4

- Apply 2 layers of Ultra Clean and Tear Fusible to the back of the background fabric.
- Hoop fabric.

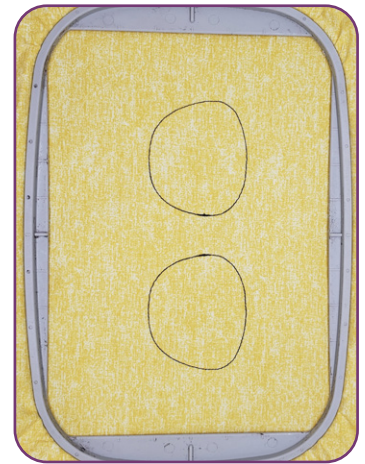


EMBROIDERY



Step 5

- Stitch Machine Step 1, Blue Fabric Placement Stitch.



Step 6

- Remove the hoop from the machine, but NOT the project from the hoop.
- Lay the hoop on a flat surface.
- Remove the paper from the back of the prepared appliques to expose the adhesive surface.
- Tip: Score the back of the applique with scissor point or pin, then peel away from the scored edge.

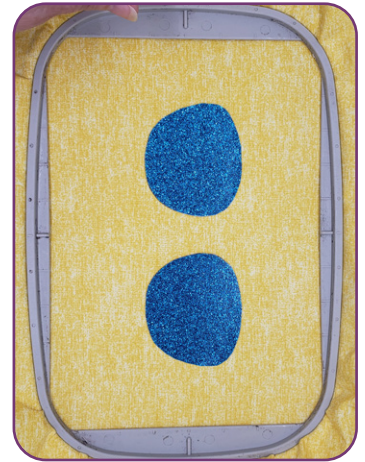


EMBROIDERY



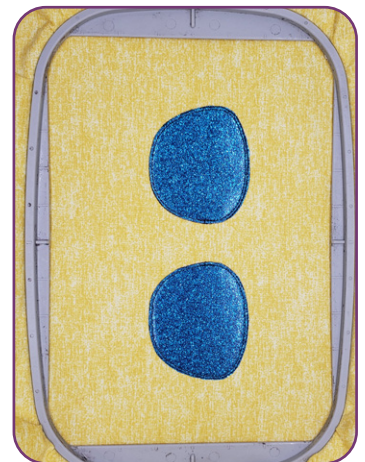
Step 7

- Position the applique, vinyl side up, within each placement stitch, matching the cut edges with the stitching line.
- Finger press to secure.
- Return the hoop to the machine.



Step 8

- Stitch Machine Step 2, Cut Line and Tackdown

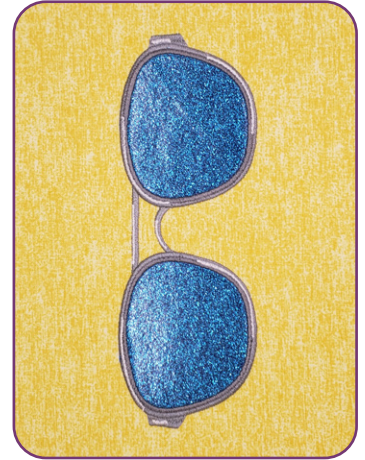


EMBROIDERY



Step 9

- Stitch the remaining steps according to the thread chart.
- Remove the project from the hoop and any excess stabilizer from the project.
- Press face down on a Perfect Embroidery Press Cloth.

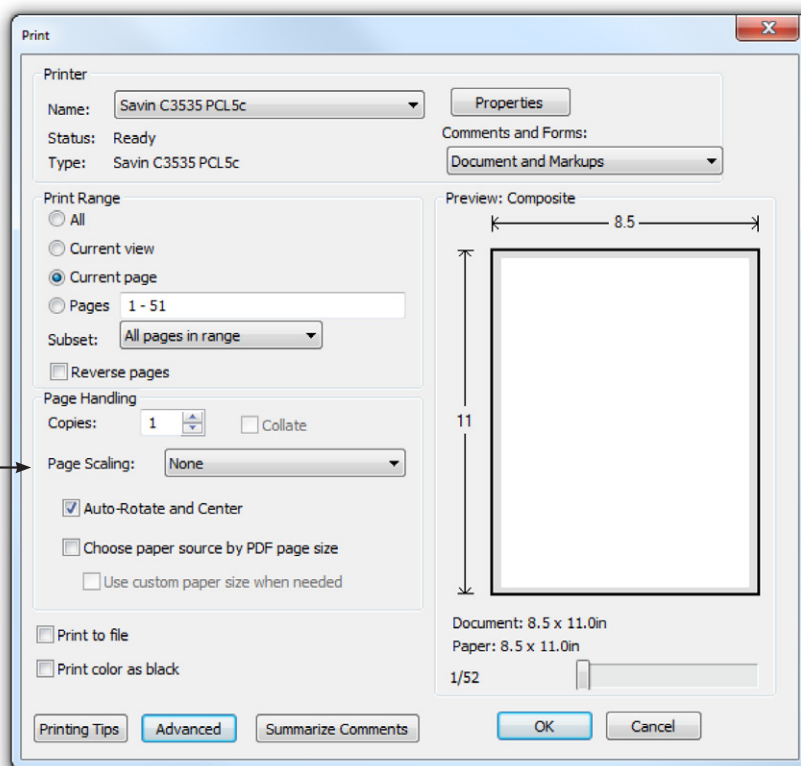


PRINTING INSTRUCTIONS



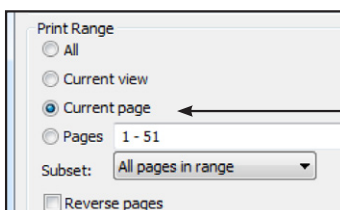
ATTENTION

When printing this document, any page scaling or page fitting options in your print dialog box must be turned OFF or set to NONE so that your files will print out at their actual size. Images not printed at actual size will not function as intended.



TO SAVE PAPER

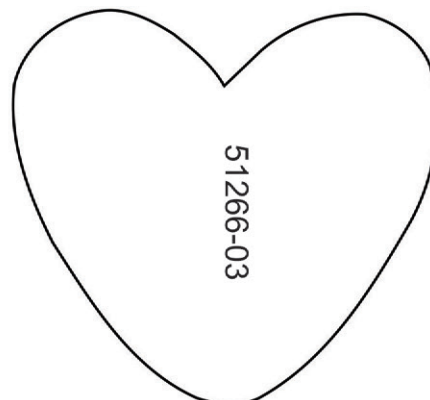
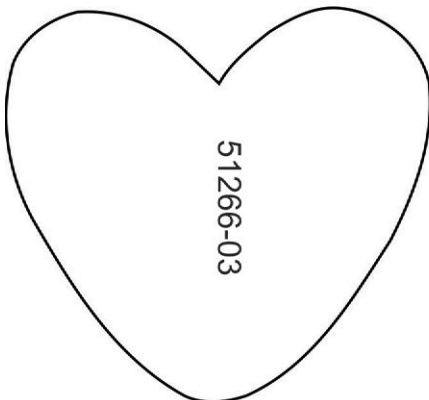
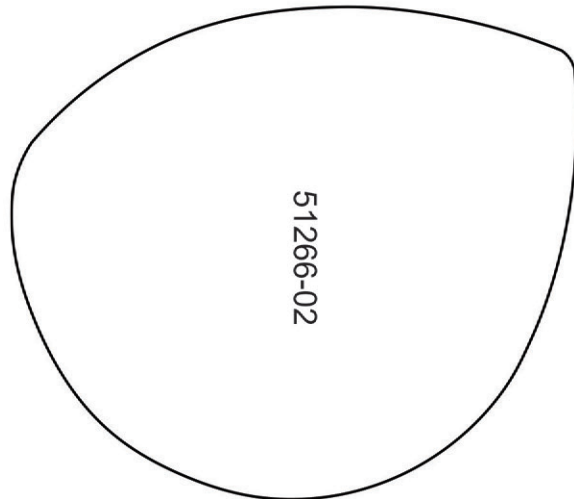
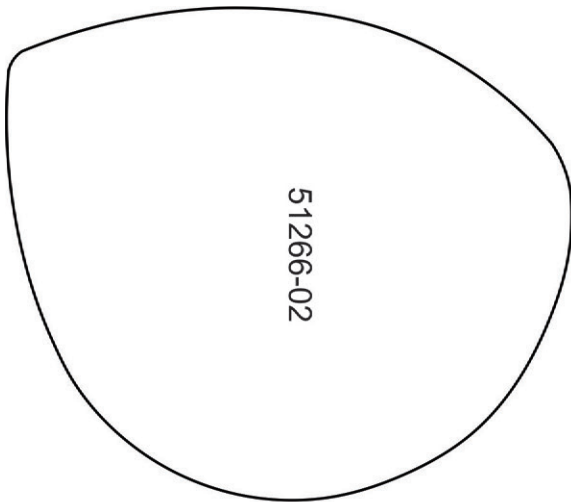
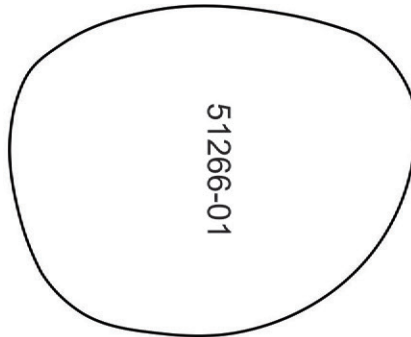
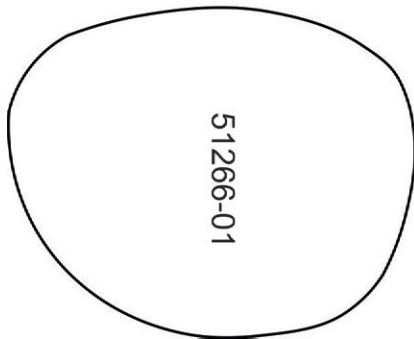
Only print the desired image by navigating to the image's page, go to File > Print and select "Current page" in the print dialog box. Repeat for each desired image.



APPLIQUE PATTERNS



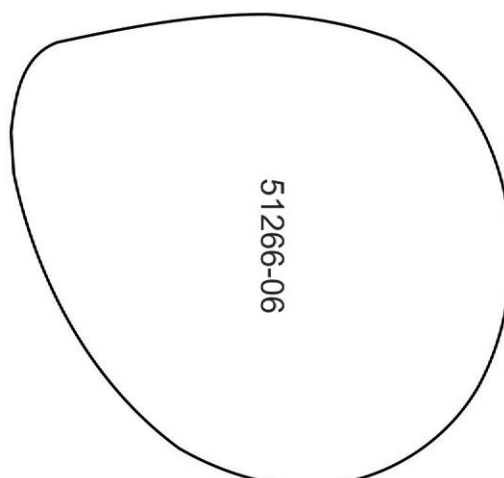
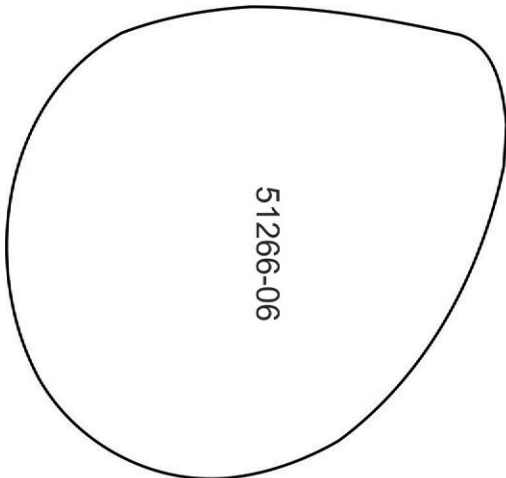
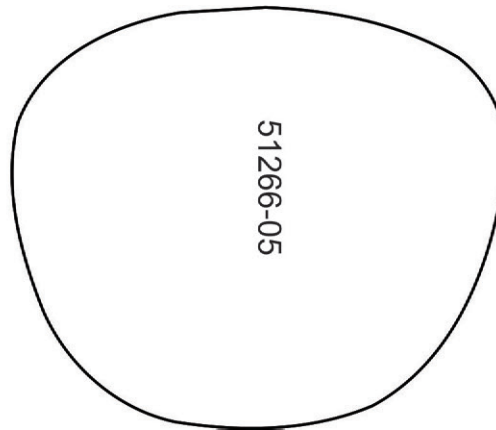
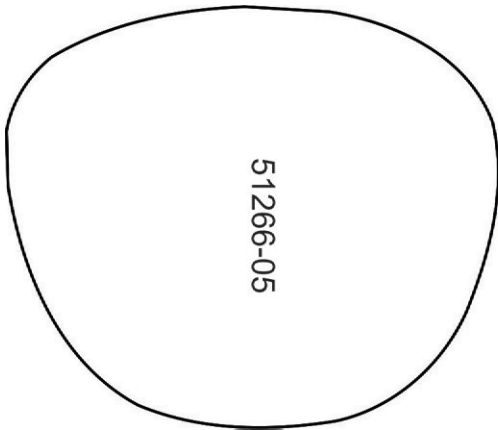
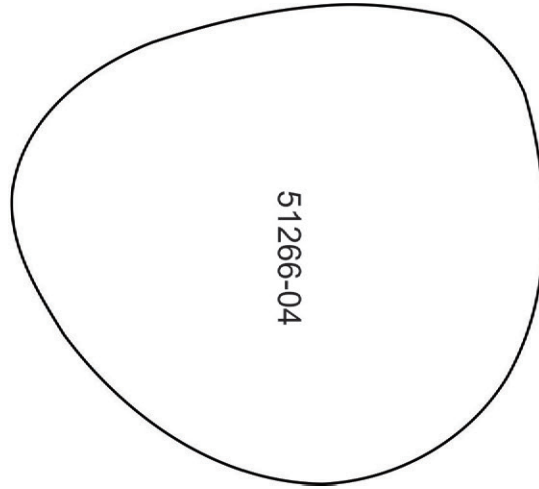
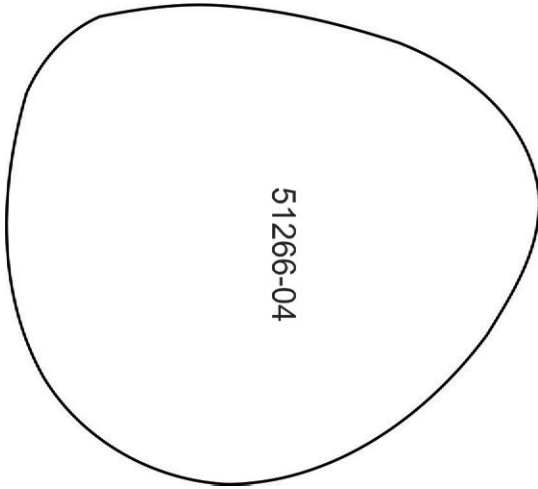
Print at 100%. No scaling. This box measures 1" x 1". Use the box as an accuracy guide when printing templates.



APPLIQUE PATTERNS



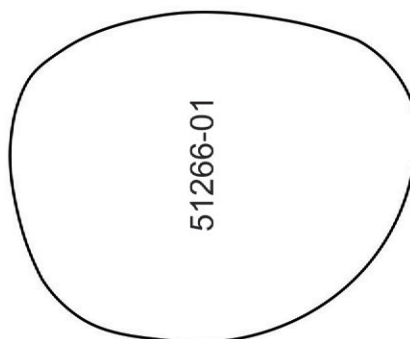
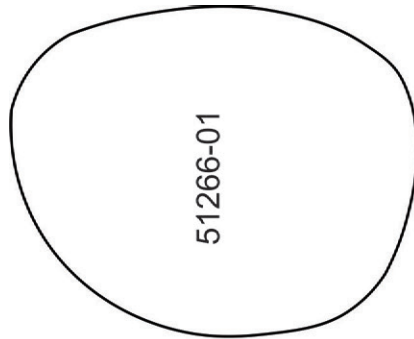
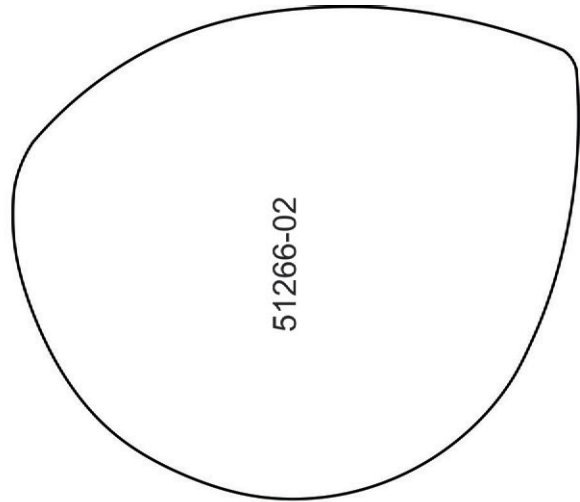
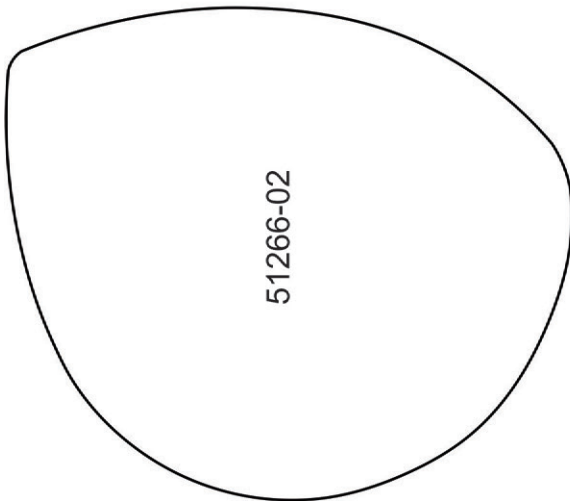
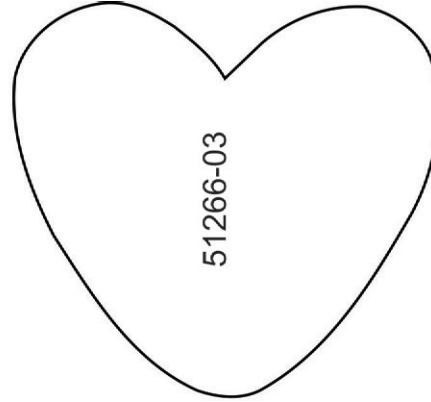
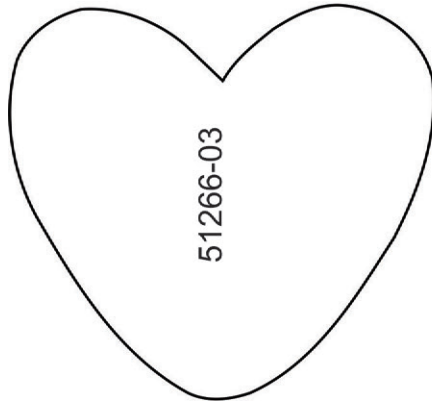
Print at 100%. No scaling. This box measures 1" x 1". Use the box as an accuracy guide when printing templates.



MIRRORED PATTERNS



Print at 100%. No scaling. This box measures 1" x 1". Use the box as an accuracy guide when printing templates.



MIRRORED PATTERNS



Print at 100%. No scaling. This box measures 1" x 1". Use the box as an accuracy guide when printing templates.

51266-06

51266-06

51266-05

51266-05

51266-04

51266-04