

Note: Some designs in this collection may have been created using unique special stitches and/or techniques. To preserve design integrity when rescaling or rotating designs in your software, always rescale or rotate designs using the handles directly on-screen.



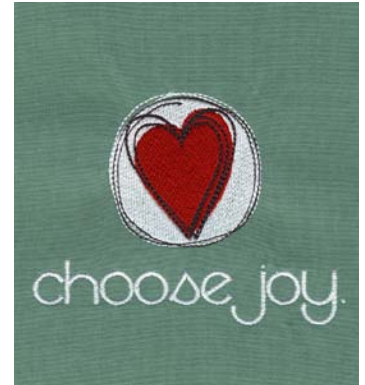
80023-01 Live Laugh Love
4.76 X 4.27 in.
120.90 X 108.46 mm
14,695 St. ❁



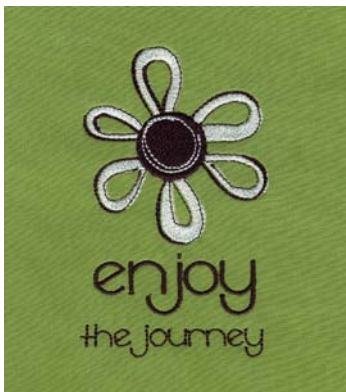
80023-02 Love One Another Flowers
5.68 X 4.81 in.
144.27 X 122.17 mm
17,152 St. ❁ L



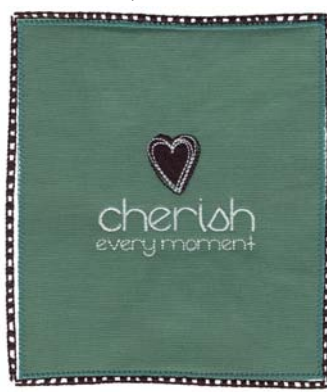
80023-03 Be You Appliqué
4.85 X 5.62 in.
123.19 X 142.75 mm
6,957 St. ❁ L



80023-04 Choose Joy
4.01 X 3.03 in.
101.85 X 76.96 mm
8,262 St. ❁❁



80023-05 Enjoy the Journey
2.42 X 4.01 in.
61.47 X 101.85 mm
8,079 St. ❁



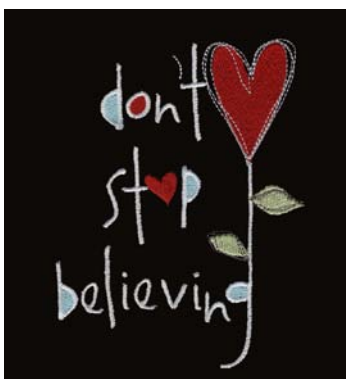
80023-06 Cherish Every Moment Appliqué
4.87 X 5.67 in.
123.70 X 144.02 mm
9,804 St. ❁ L



80023-07 Dream Appliqué
4.85 X 5.63 in.
123.19 X 143.00 mm
8,204 St. ❁ L



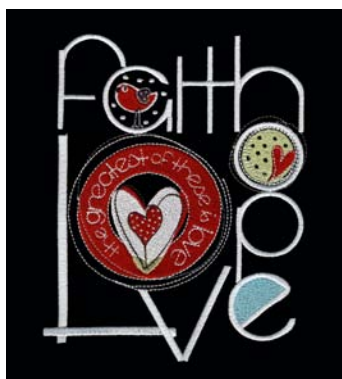
80023-08 Believe Appliqué
4.86 X 6.15 in.
123.44 X 156.21 mm
7,857 St. ❁ L



80023-09 Don't Stop Believing
3.51 X 4.70 in.
89.15 X 119.38 mm
7,796 St. ❁



80023-10 Peace
6.73 X 4.52 in.
170.92 X 114.81 mm
20,588 St. ❁ L



80023-11 Faith Hope Love
4.60 X 5.87 in.
116.84 X 149.10 mm
23,130 St. ❁ L



80023-12 Hope
4.26 X 5.02 in.
108.20 X 127.51 mm
18,209 St. ❁ L

❁ Design contains a loose fill.
❁ Some white areas shown are not stitched.

L Design is larger than 5" (127 mm) in either direction.
S Design is smaller than 1.5" (38.1 mm) in either direction.

Note: Some designs in this collection may have been created using unique special stitches and/or techniques. To preserve design integrity when rescaling or rotating designs in your software, always rescale or rotate designs using the handles directly on-screen.



80023-13 Hope 2
4.31 X 5.16 in.
109.47 X 131.06 mm
18,219 St. ⚙️ L



80023-14 Love With All Your Soul
4.25 X 5.18 in.
107.95 X 131.57 mm
22,111 St. L



80023-15 Love With All Your Heart
4.13 X 4.83 in.
104.90 X 122.68 mm
18,590 St. ⚙️



80023-16 Love With All Your Heart Medallion
2.98 X 2.93 in.
75.69 X 74.42 mm
13,079 St. ⚙️



80023-17 Love With All Your Mind
4.04 X 4.83 in.
102.62 X 122.68 mm
18,730 St. ⚙️



80023-18 Love With All Your Mind Medallion
2.98 X 3.05 in.
75.69 X 77.47 mm
13,307 St. ⚙️



80023-19 Love One Another
4.12 X 4.83 in.
104.65 X 122.68 mm
16,594 St. ⚙️



80023-20 Love One Another Medallion
3.14 X 3.14 in.
79.76 X 79.76 mm
11,017 St.

⚙️ Design contains a loose fill.
⚙️ Some white areas shown are not stitched.

L Design is larger than 5" (127 mm) in either direction.
S Design is smaller than 1.5" (38.1 mm) in either direction.

Listings below indicate color sample, stitching order and suggested thread color number. "I" refers to Isacord Thread and "T" refers to Timeless. Colors beginning with 20501 refer to YLI Fine Metallics, 7 refer to Yenmet Metallic, 8 refer to YLI Variations Variegated Thread and 9 refer to Isacord Multicolor Variegated.

80023-01 Live Laugh Love

	I	T
1. Blue Details	4240	14178
2. Bird & Grey Details	0124	28163
3. Red Squares & Details	1900	12115
4. Green Squares & Details	6051	18118
5. Magenta Details & Heart Flower	2320	10157
6. Black Squares	4174	28148
7. White Details	0015	28154
8. Black Linework	4174	28148
9. Leaves, Stems, & Green Details	6051	18118
10. Blue Details on Bird	4240	14178
11. Red Hearts & Details	1900	12115

80023-02 Love One Another Flowers

1. White Flower	0015	28154
2. Green Details	6051	18118
3. White Bird, "L", "V", & Stamen	0015	28154
4. Red Details	1902	12121
5. Blue Details	4240	14178
6. Grey Details	0124	28163
7. Magenta Details	2320	10157
8. "E"	0015	28154
9. Black Details	4174	28148

80023-03 Be You Appliqué

1. Placement Stitch	4174	28148
2. Tackdown	4174	28148
3. Border	4174	28148
4. White Hearts	0015	28154
5. Red Hearts & Outlines	1902	12121
6. Red Hearts Outlines & Details	0015	28154
7. Lettering	0015	28154

80023-04 Choose Joy

1. White Circle	0015	28154
2. White Swirl Border	0015	28154
3. Heart	1902	12121
4. Black Swirl Border & Heart Details	4174	28148
5. Lettering	0015	28154

80023-05 Enjoy the Journey

1. White Petals	0015	28154
2. Black Petal Details & Stamen	4174	28148
3. White Stamen Details	0015	28154
4. Lettering	4174	28148

80023-06 Cherish Every Moment Appliqué

1. Placement Stitch	4610	14193
2. Tackdown	4610	14193
3. Black Border	4174	28148
4. Black Heart	4174	28148
5. White Heart Details	0015	28154
6. Lettering	0015	28154

80023-07 Dream Appliqué

1. Placement Stitch	4610	14193
2. Tackdown	4610	14193
3. Border	4174	28148
4. Hearts	1902	12121
5. Heart Details	4174	28148
6. Lettering	0015	28154

80023-08 Believe Appliqué

1. Placement Stitch	4174	28148
2. Tackdown	4174	28148
3. Black Border	4174	28148
4. White Flower	0015	28154
5. Black Flower Details	4174	28148
6. Lettering	0015	28154

80023-09 Don't Stop Believing

1. Light Blue Details	4240	14178
2. Hearts & "O"	1902	12121
3. Lettering	0015	28154
4. Leaves	6051	18118
5. Leaf Details	0112	28142
6. Heart Details	0145	14103

80023-10 Peace

1. Green Stripes	6051	18118
2. Blue Stripes	4240	14178
3. Red Heart & Bird	1902	12121
4. White Letters & Details	0015	28154
5. Black Hearts & Details	4174	28148
6. Grey Heart Swirls	0112	28142
7. White Wing Details	0015	28154

80023-11 Faith Hope Love

1. "E" Blue Filling	4240	14178
2. Small "O" Green Filling	6051	18118
3. Red Bird	1902	12121
4. Lettering & Spots	0015	28154
5. Red Hearts	1902	12121
6. White Hearts & Details	0015	28154
7. Leaves & Stem	6051	18118
8. Black Details	4174	28148
9. Wing White Spots	0015	28154

80023-12 Hope

1. Green Stripes	6051	18118
2. Large White Lettering	0015	28154
3. Red Heart Spots	0015	28154
4. Large White Lettering	0015	28154
5. Bird	1902	12121
6. Bird & Inside "P"	0015	28154
7. Black Hearts & Swirls	4174	28148
8. Inside "O" Details	0015	28154
9. Leaves	6051	18118
10. Red "O" Details	1902	12121
11. White "O" Details & Wing	0015	28154
12. Heart Flower Details	4174	28148
13. Red Heart Spots	0015	28154

80023-13 Hope 2

1. Blue Spot in "P"	4240	14178
2. White Letters & Details	0015	28154
3. Bird & Heart	1902	12121
4. Blue Details	4240	14178
5. White Bird Details	0015	28154
6. Black Details	4174	28148
7. Wing White Details	0015	28154

80023-14 Love With All Your Soul

1. White Letters & Details	0015	28154
2. Blue Flower	4240	14178
3. White Stamen	0015	28154
4. Hearts	1902	12121
5. Black Details	4174	28148

80023-15 Love With All Your Heart

1. White Lettering	0015	28154
2. Red Flower Details	1900	12115
3. Light Blue Details	4240	14178
4. White Flower Details	0015	28154
5. Black Letters & Heart Details	4174	28148
6. Hearts	1900	12115

80023-16 Love With All Your Heart Medallion

1. Red Flower Details	1900	12115
2. Light Blue Details	4240	14178
3. White Flower Details	0015	28154
4. Black Letters & Heart Details	4174	28148
5. Hearts	1900	12115

80023-17 Love With All Your Mind

1. White Lettering	0015	28154
2. White Flower Details	0015	28154
3. White Heart Details	0015	28154
4. Blue Flower Details	4240	14178
5. Hearts	1900	12115
6. Black Letters & Flower Outlines	4174	28148

80023-18 Love With All Your Mind Medallion

1. White Flower Details & Linework	0015	28154
2. White Heart Details	0015	28154
3. Blue Flower Details	4240	14178
4. Hearts	1900	12115
5. Black Letters & Flower Outlines	4174	28148

80023-19 Love One Another

1. Green Letter Details	6051	18118
2. Letters	0015	28154
3. Blue Details	4240	14178
4. White Details	0015	28154
5. Hearts	1900	12115
6. Black Letters & Heart Outlines	4174	28148

80023-20 Love One Another Medallion

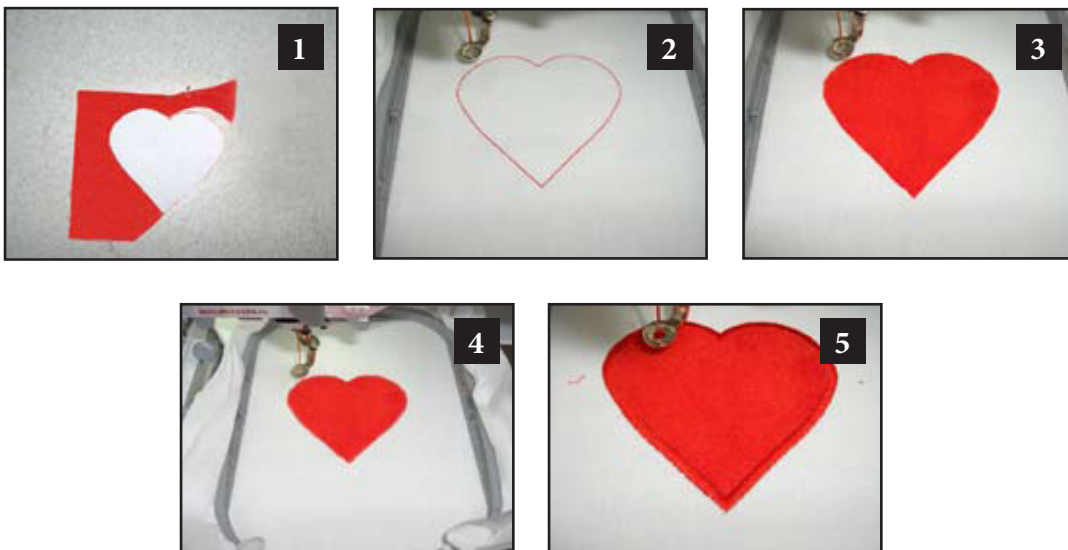
1. Blue Details	4240	14178
2. White Details	0015	28154
3. Hearts	1900	12115
4. Black Letters & Heart Outlines	4174	28148

Pre-Cut Appliqué Instructions

1. Print out the necessary pages from the PDF of the appliqué pattern(s).
2. Mark the right side of the pattern pieces so you'll know which direction to lay the pattern on the fabric.
3. Lightly spray the wrong side of the pattern pieces with temporary adhesive spray and allow it to set for a few minutes.
4. Place the pattern pieces on the right side of the fabric and carefully cut them out. **PHOTO 1**
5. Sew the placement stitch on your hooped fabric. **PHOTO 2**
6. With the paper still stuck to the right side of the appliqué fabric, spray the wrong side of the fabric with temporary spray adhesive.
7. Place the fabric inside the sewing placement stitch so that it matches the stitching line, and then remove the paper pattern. **PHOTO 3**
8. Sew the tackdown. **PHOTO 4**
9. Sew the remainder of the design and repeat for any remaining pieces. **PHOTO 5**

NOTE: The patterns are sized for the designs as they were made. If you resize the design, you will need to resize the pattern the same amount. You can print out the pattern at the normal size then copy it on a copy machine at the changed size. For example, resize the designs to 80%, resize the printed pattern to 80%.

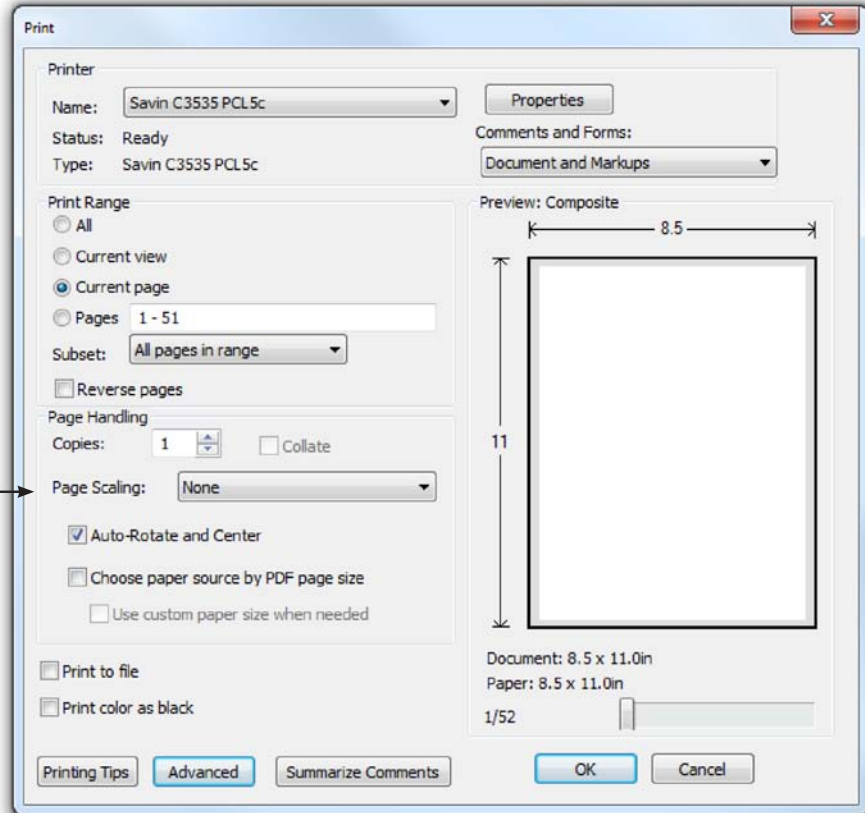
TIP: When Printing the patterns, make sure that the "Fit to page" option is UNCHECKED in the Print Dialog Box. If this option is checked the printed patterns will not be actual size.



Note: Some of the appliqué pieces in this collection are attached to the design by a looser density stitch rather than the traditional full satin stitch. This means that the edges of the appliqué may begin to fray, creating a more informal and natural look. The collection was created with this effect in mind. If you wish the appliqué pieces to keep a sharper edge, you will need to select the appliqué fabric with this in mind. You may also choose to apply a non-fray treatment to the appliqué fabric before attaching it, or use a sticky backing on the appliqué fabric before cutting out the appliqué pattern piece.

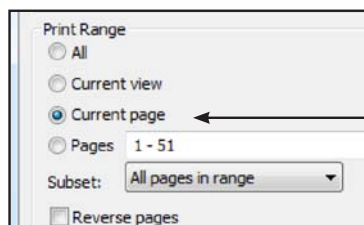
ATTENTION

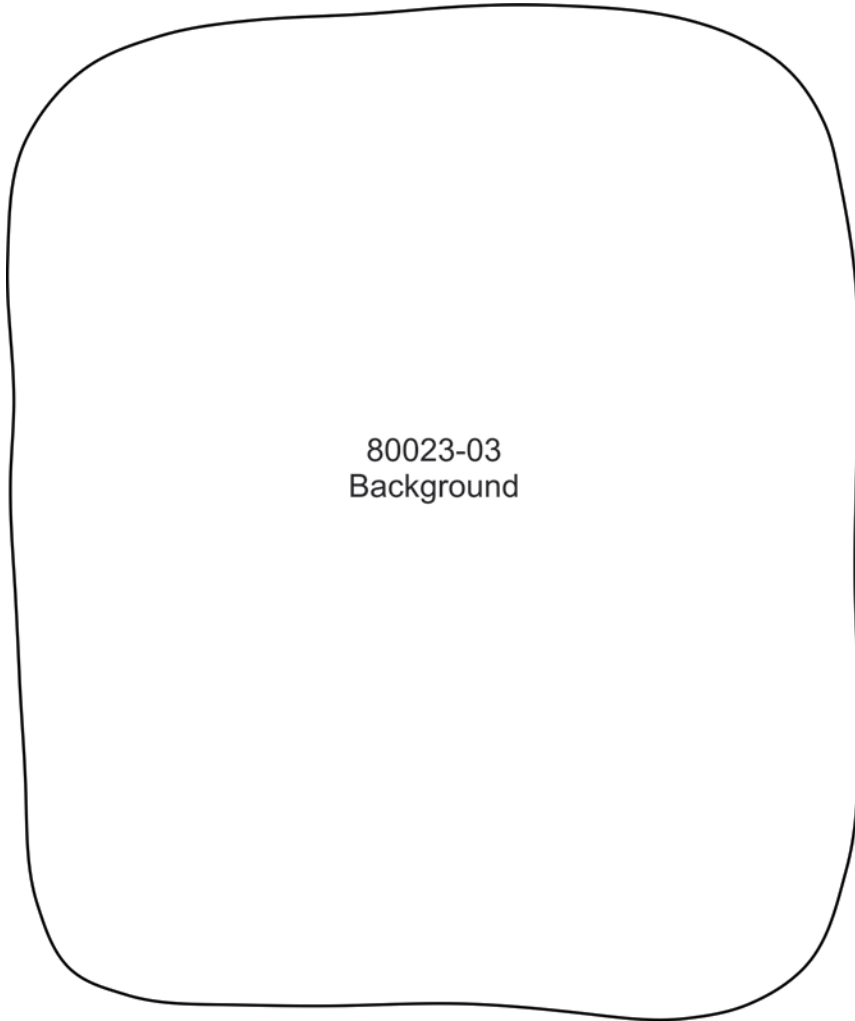
When printing this document, any page scaling or page fitting options in your print dialog box must be turned OFF or set to NONE so that your files will print out at their actual size. Images not printed at actual size will not function as intended.



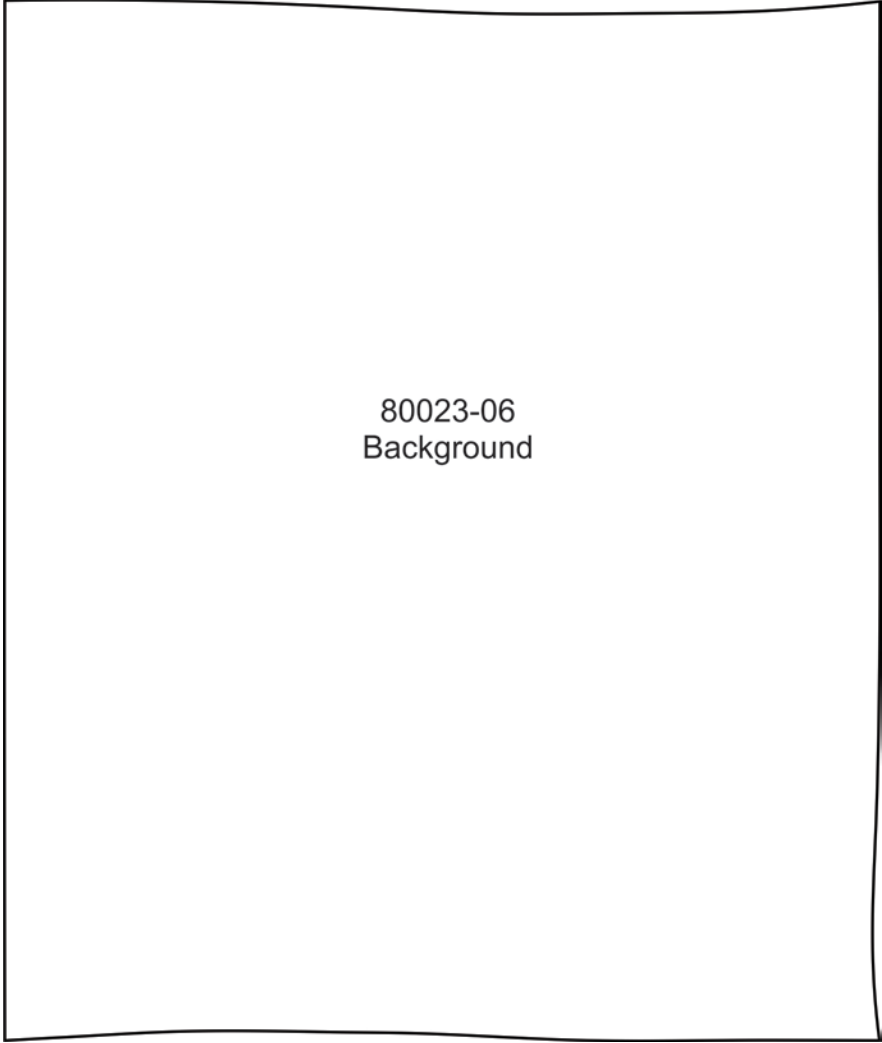
TO SAVE PAPER

Only print the desired image by navigating to the image's page, go to File > Print and select "Current page" in the print dialog box. Repeat for each desired image.





80023-03
Background



80023-06
Background

