

Note: Some designs in this collection may have been created using unique special stitches and/or techniques. To preserve design integrity when rescaling or rotating designs in your software, always rescale or rotate designs using the handles directly on-screen.



**80035-01 Angel**  
4.87 X 6.87 in.  
123.70 X 174.50 mm  
36,835 St. ❄️ L



**80035-02 Bell**  
3.51 X 2.82 in.  
89.15 X 71.63 mm  
10,035 St. ❄️



**80035-03 Candy Canes**  
3.52 X 3.05 in.  
89.41 X 77.47 mm  
14,335 St. ❄️



**80035-04 Dove**  
4.31 X 4.71 in.  
109.47 X 119.63 mm  
17,644 St. ❄️



**80035-05 Evergreen**  
6.95 X 2.03 in.  
176.53 X 51.56 mm  
18,318 St. ❄️ L



**80035-06 Fruitcake**  
2.98 X 2.83 in.  
75.69 X 71.88 mm  
6,551 St. ❄️



**80035-07 Gingerbread**  
2.97 X 4.96 in.  
75.44 X 125.98 mm  
11,552 St. ❄️



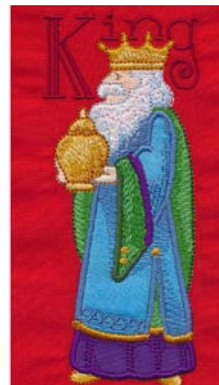
**80035-08 Holly**  
6.77 X 4.28 in.  
171.96 X 108.71 mm  
23,025 St. ❄️ L



**80035-09 Icicle**  
1.71 X 4.32 in.  
43.43 X 109.73 mm  
8,554 St. ❄️



**80035-10 Baby Jesus**  
4.31 X 6.40 in.  
109.47 X 162.56 mm  
29,601 St. ❄️ L



**80035-11 King**  
2.98 X 5.26 in.  
75.69 X 133.60 mm  
16,740 St. ❄️ L



**80035-12 Lights**  
2.97 X 3.13 in.  
75.44 X 79.50 mm  
6,175 St. ❄️

❄️ Design contains a loose fill.

❄️ Some white areas shown are not stitched.

L Design is larger than 5" (127 mm) in either direction.

S Design is smaller than 1.5" (38.1 mm) in either direction.

It is a violation of Copyright law to make and distribute copies of electronic designs or artwork. Electronic designs are licensed to the original purchaser for use at one location. 2013© Krista Hamrick represented by Two Town Studios. All rights reserved.

Note: Some designs in this collection may have been created using unique special stitches and/or techniques. To preserve design integrity when rescaling or rotating designs in your software, always rescale or rotate designs using the handles directly on-screen.



**80035-13 Mistletoe**  
3.25 X 4.01 in.  
82.55 X 101.85 mm  
18,222 St. ❄️



**80035-14 Nutcracker**  
2.52 X 6.87 in.  
64.01 X 174.50 mm  
25,632 St. ❄️ L



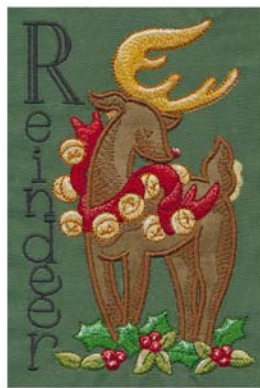
**80035-15 Ornaments**  
2.95 X 6.87 in.  
74.93 X 174.50 mm  
14,121 St. ❄️ L



**80035-16 Poinsettia**  
3.00 X 4.00 in.  
76.20 X 101.60 mm  
11,919 St. ❄️



**80035-17 Quiet**  
2.26 X 4.28 in.  
57.40 X 108.71 mm  
8,402 St. ❄️



**80035-18 Reindeer**  
3.93 X 5.76 in.  
99.82 X 146.30 mm  
27,104 St. ❄️ L



**80035-19 Santa**  
3.25 X 5.39 in.  
82.55 X 136.91 mm  
27,965 St. ❄️ L



**80035-20 Tree**  
3.47 X 3.51 in.  
88.14 X 89.15 mm  
18,753 St. ❄️



**80035-21 Unwrap**  
2.01 X 6.28 in.  
51.05 X 159.51 mm  
12,007 St. ❄️ L



**80035-22 Voices**  
6.09 X 4.83 in.  
154.69 X 122.68 mm  
43,933 St. ❄️ L



**80035-23 Wreath**  
3.93 X 4.26 in.  
99.82 X 108.20 mm  
21,020 St. ❄️



**80035-24 X-tra Special**  
3.25 X 2.75 in.  
82.55 X 69.85 mm  
10,875 St. ❄️

❄️ Design contains a loose fill.

❄️ Some white areas shown are not stitched.

L Design is larger than 5" (127 mm) in either direction.

S Design is smaller than 1.5" (38.1 mm) in either direction.

It is a violation of Copyright law to make and distribute copies of electronic designs or artwork. Electronic designs are licensed to the original purchaser for use at one location. 2013© Krista Hamrick represented by Two Town Studios. All rights reserved.

Note: Some designs in this collection may have been created using unique special stitches and/or techniques. To preserve design integrity when rescaling or rotating designs in your software, always rescale or rotate designs using the handles directly on-screen.



**80035-25 Yule Log**

3.48 X 1.75 in.  
88.39 X 44.45 mm  
8,431 St. ✿



**80035-26 Zzzzzzzz**

6.02 X 3.41 in.  
152.91 X 86.61 mm  
33,916 St. ✿ L



**80035-27 Merry Christmas**

3.93 X 2.13 in.  
99.82 X 54.10 mm  
7,360 St. ✿

✿ Design contains a loose fill.

✿ Some white areas shown are not stitched.

L Design is larger than 5" (127 mm) in either direction.

S Design is smaller than 1.5" (38.1 mm) in either direction.

It is a violation of Copyright law to make and distribute copies of electronic designs or artwork. Electronic designs are licensed to the original purchaser for use at one location. 2013© Krista Hamrick represented by Two Town Studios. All rights reserved.



# Christmas Alphabet

by Krista Hamrick / #80035 / 27 Designs

Listings below indicate color sample, stitching order and suggested thread color number. Most numbers indicate Isacord thread. However, colors beginning with 20501 refer to YLI Fine Metallics, 7 refer to Yenmet Metallic, 8 refer to YLI Variations Variegated Thread and 9 refer to Isacord Multicolor Variegated.

## 80035-01 Angel

1. Halo	0821
2. Halo Light Shading	0640
3. Halo Dark Shading & Outlines	0824
4. Wings	0015
5. Wings Light Shading	3840
6. Hair	0824
7. Hair Gold Shading	0811
8. Hair Dark Shading & Outlines	0931
9. Left Hand & Face	1060
10. Green Dress Shading	5531
11. Medium Green Dress Shading	5722
12. Dark Green Dress Shading & Outlines	5643
13. Dress Placement Stitch	1902
14. Dress Cut Line & Tackdown	1902
15. Dress Cover Stitch & Shading	1902
16. Birds	0015
17. Wings & Bird Outlines	3810
18. Right Hand	1060
19. Beaks	0640
20. Gold Dress Trim	0821
21. Right Sleeve Cover Stitch	5643
22. Skin Outlines	0853
23. Lettering	0015
24. Seam	0020

## 80035-02 Bell

1. Bell Placement Stitch	0015
2. Bell Cut Line & Tackdown	0015
3. Gold Bell Shading	0821
4. Medium Bell Shading	0842
5. Dark Bell Shading	0931
6. Yellow Bell Shading	0640
7. Berries & Red Bell Shading	1902
8. Dark Red Shading	1912
9. Cover Stitch & White Highlights	0015
10. Medium Green Shading & Leaves	5722
11. Light Green Shadings & Leaves	5531
12. Dark Green Shading & Leaf Outlines	5643
13. Berry Highlights	1521
14. Lettering	0015
15. Seam	0020

## 80035-03 Candy Canes

1. Small Leaf Dark Shading	5833
2. Small Leaf Light Shading	0352
3. Large Leaves	5722
4. Large Leaf Light Shading	5531
5. Leaf Outlines	5643
6. White Stripes	0015
7. Red Stripes	1725
8. Candy Cane Shading & Outlines	1902
9. Bow	1902
10. Bow Shading & Outlines	1912
11. Lettering	1902
12. Seam	0020

## 80035-04 Dove

1. Leaves	5833
2. Leaf Light Shading	0352
3. Leaf Outlines & Dark Shading	5643
4. Dove Placement Stitch	3810
5. Dove Cut Line & Tackdown	3810
6. Wings	0015
7. Dove Light Shading	3840
8. Dover Cover Stitch & Linework	3810
9. Bow	1725
10. Bow Medium Shading	1902
11. Bow Outlines	1912
12. Bell Placement Stitch	0931
13. Bell Cut Line & Tackdown	0931
14. Gold Bell Shading	0821
15. Medium Bell Shading	0842
16. White Spots & Bell Highlights	0015
17. Bell Cover Stitch & Dark Shading	0931
18. Bow Red Highlight	1521
19. Lettering	0015
20. Seam	0020

## 80035-05 Evergreen

1. Pine Needles	5722
2. Light Needle Shading	5531
3. Needles Outlines	5643
4. Leaf Highlights	0015
5. Berries	1725
6. Berry Medium Shading	1902
7. Berry Dark Shading & Outlines	1912
8. Pine Cone Placement Stitch	0842
9. Pine Cone Cut Line & Tackdown	0842
10. Pine Cone Dark Shading & Cover Stitch	0933
11. Pine Cone Light Shading & Cover Stitch	0842
12. Berry Light Shading	1521
13. Pine Cone & Berry Highlights	0015
14. Lettering	5643
15. Seam	0020

## 80035-06 Fruitcake

1. Small Leaf Dark Shading	5833
2. Small Leaf Light Shading	0352
3. Large Leaf	5722
4. Large Leaf Highlights	5531
5. Leaf Outlines	5643
6. Berry	1902
7. Cake Placement Stitch	0933
8. Cake Cut Line & Tackdown	0933
9. Cake Medium Shading	0853
10. Cake Highlights	0015
11. Cake Cover Stitch & Shading	0933
12. Stand	1902
13. Stand Highlights	1521
14. Stand Dark Shading & Linework	1912
15. Lettering	5833
16. Seam	0020

## 80035-07 Gingerbread

1. Cookie Placement Stitches	0931
2. Cookie Cut Lines & Tackdowns	0931
3. Girl Medium Shading & Boys Hair	0842
4. Boys Medium Shading	0853
5. Boy & Girl White Shading	0015
6. Boy Cover Stitch, Shading & Girl Hair	0933
7. Girl Cover Stitch & Shading	0931
8. Green Icing	5722
9. Bows & Red Buttons	1902
10. Smiles & Bow Outlines	1912
11. Blue Buttons & Eyes	3810
12. Lettering	3810
13. Stars	0640
14. Star Outlines	0015
15. Seam	0020

## 80035-08 Holly

1. Small Leaves	0352
2. Small Leaf Shading	5833
3. Small Leaf Outlines	5643
4. Stems	0853
5. Berries	1725
6. Berry Medium Shading	1902
7. Berry Light Shading	1521
8. Berry Dark Shading & Outlines	1912
9. Leaf Placement Stitches	5643
10. Leaf Cut Line & Tackdown	5643
11. Large Leaf Medium Shading	5833
12. Large Leaf Light Shading	5531
13. Leaf Cover Stitches	5643
14. Highlights	0015
15. Lettering	1912
16. Seam	0020

## 80035-09 Icicle

1. Wall Placement Stitch	1902
2. Wall Cut Line & Tackdown	1902
3. Window Placement Stitch	0015
4. Window Cut Line & Tackdown	0015
5. Wall Medium Shading	1725
6. Wall Dark Shading	1902
7. Wall Light Shading	1521
8. Wall Cover Stitch	1902
9. Window Shading	0821
10. Window Cover Stitch	0015
11. Snow Placement Stitch	0015
12. Snow Cut Line & Tackdown	0015
13. Snow Cover Stitch	0015
14. Snow Shading	3840
15. Stars	0640
16. Lettering	0015
17. Seam	0020

## 80035-10 Baby Jesus

1. Lamb Placement Stitch	3840
2. Lamb Cut Line & Tackdown	3840
3. Lamb Ears	1860
4. Lamb Face & Ears	0111
5. Lamb Face & Ear Outlines	4174
6. Lamb Cover Stitch	3840
7. Bow	1902
8. Bow Light Shading	1521
9. Bow Outlines	1912
10. Manger Placement Stitch	0933
11. Manger Cut Line & Tackdown	0933
12. Manger Shading & Cover Stitch	0933
13. Straw & Halo	0821
14. Straw & Halo Medium Shading	0842
15. Straw & Halo Light Shading	0640
16. Baby Face	1060
17. Baby Face Outlines	0853
18. Bird	0015
19. Leaves	5531
20. Blanket Placement Stitch	3810
21. Blanket Cut Line & Tackdown	3810
22. Blanket Shading, Cover Stitch & Bird Outlines	3810
23. Halo Outlines, Straw Dark Shading & Cover Stitch	0931
24. Lettering	4174
25. Seam	0020



# Christmas Alphabet

by Krista Hamrick / #80035 / 27 Designs

Listings below indicate color sample, stitching order and suggested thread color number. Most numbers indicate Isacord thread. However, colors beginning with 20501 refer to YLI Fine Metallics, 7 refer to Yenmet Metallic, 8 refer to YLI Variations Variegated Thread and 9 refer to Isacord Multicolor Variegated.

## 80035-11 King

1. Robe Placement Stitch	3810
2. Robe Cut Line & Tackdown	3810
3. Blue Robe Shading	3810
4. Green Robe Trim	5722
5. Light Green Trim Shading	5531
6. Skin	1060
7. Crown, Jar & Shoes	0821
8. Crown, Jar & Shoe Light Shading	0640
9. Crown & Jar Medium Shading	0842
10. Rob Bottom Placement Stitch	2900
11. Robe Bottom Cut Line & Tackdown	2900
12. Robe Bottom Cover Stitch & Shading	2900
13. Skin Outlines	0853
14. Beard	0015
15. Beard Shading & Outlines	3840
16. Dark Green Trim Outline Cover Stitch	5643
17. Blue Robe Cover Stitch	3810
18. Crown, Jar, Shoe Outlines & Gold Trim	0931
19. Buttons & Gold Trim Shading	0821
20. Lettering	1912
21. Seam	0020

## 80035-12 Lights

1. Orange Bulbs	0811
2. Orange Bulb Shading	0824
3. Red Bulbs	1902
4. Red Bulb Shading	1912
5. Blue Bulbs	3840
6. Blue Bulb Shading	3810
7. Green Bulbs	5531
8. Green Bulb Shading	5722
9. Wire	5833
10. Bulb Highlights & Outlines	0015
11. Lettering	0015
12. Seam	0020

## 80035-13 Mistletoe

1. Leaves & Stems	5833
2. Light Leaf Shading	0352
3. Medium Leaf Shading	5531
4. Leaf & Stem Outlines	5643
5. Berries	0015
6. Berry Light Shading	0640
7. Berry Dark Shading & Outlines	0842
8. Bow	1902
9. Bow Light Shading	1521
10. Bow Dark Shading & Outlines	1912
11. Leaf Highlights	0015
12. Lettering	4174
13. Seam	0020

## 80035-14 Nutcracker

1. Crown Top & Shirt Placement Stitch	1902
2. Crown Top & Shirt Cut Line & Tackdown	1902
3. Beard Placement Stitch	3840
4. Beard Cut Line & Tackdown	3840
5. Skin	1060
6. Sword, Eyebrows & Teeth	0015
7. Lip	1860
8. Green Trim	5722
9. Gold Crown & Feathers	0821
10. Crown, Handle & Feather Light Shading	0640
11. Crown & Handle Medium Shading	0842
12. Eyes, Pants & Trim	3810
13. Dark Green Trim & Linework	5643
14. Boots	0111
15. Boot Shading & Outlines	4174
16. Beard, Sword Outlines & Shading	3840
17. Shirt & Crown Cover Stitch & Trim	1902
18. Dark Gold Trim & Crown Cover Stitch	0931
19. Buttons & Light Gold Trim Shading	0821
20. Lettering	3810
21. Seam	0020

## 80035-15 Ornaments

1. Right Ornament Placement Stitch	3810
2. Right Ornament Cut Line & Tackdown	3810
3. Right Ornament Light Blue Shading	3840
4. Right Ornament Dark Blue Shading	3810
5. Right Ornament Red Trim	1902
6. Right Ornament Cove Stitch	3810
7. Left Ornament Placement Stitch	5643
8. Left Ornament Cut Line & Tackdown	5643
9. Yellow Shading	0640
10. Gold Bow, Shading & Top	0821
11. Left Ornament Green Shading	5722
12. Left Ornament Cover Stitch	5643
13. Bow & Top Outlines	0931
14. Left Ornament Red Trim	1902
15. White Highlights	0015
16. Lettering	1912
17. Seam	0020

## 80035-16 Poinsettia

1. Leaf Placement Stitch	5643
2. Leaf Cut Line & Tackdown	5643
3. Leaf Medium Shading	5722
4. Leaf Light Shading	0352
5. Leaf Cover Stitch	5643
6. Flower Placement Stitch	1902
7. Flower Cut Line & Tackdown	1902
8. Flower Shading	1902
9. Flower Dark Linework	1912
10. Flower Cover Stitch	1902
11. Stamen	0640
12. Stamen Medium Shading	0842
13. Stamen Outline	0931
14. Stamen Highlight	0015
15. Lettering	1902
16. Seam	0020

## 80035-17 Quiet

1. Sky Placement Stitch	3840
2. Sky Cut Line & Tackdown	3840
3. House Placement Stitch	1912
4. House Cut Line & Tackdown	1912
5. Snow Placement Stitch	3840
6. Snow Cut Line & Tackdown	3840
7. Windows	0640
8. Door	0842
9. Windows & Door Outlines	0931
10. House & Chimney Shading	1902
11. Smoke, Small Stars & Snow	0015
12. House Cover Stitch & Outlines	1912
13. Snow Cover Stitch	3840
14. Large Stars	0640
15. Lettering	3810
16. Seam	0020

## 80035-18 Reindeer

1. Antlers	0821
2. Antler Medium Shading & Ear	0842
3. Antler Light Shading & Tail	0640
4. Antler Outlines	0931
5. Reindeer Placement Stitch	0933
6. Reindeer Cut Line & Tackdown	0933
7. Reindeer Shading	0933
8. Large Leaf Dark Shading	5722
9. Large Leaf Light Shading	5531
10. Small Leaf Dark Shading	5833
11. Small Leaf Light Shading	0352
12. Leaf Outlines	5643
13. Bells	0640
14. Bell Medium Shading	0842
15. Bow & Berries	1902
16. Bow & Berry Light Shading	1521
17. Bow & Berry Dark Shading & Outlines	1912
18. Reindeer Cover Stitch	0933
19. Bell Outlines	0931
20. White Highlights	0015
21. Lettering	4174
22. Seam	0020

## 80035-19 Santa

1. Hat & Robe Placement Stitch	1912
2. Hat & Robe Cut Line & Tackdown	1912
3. Beard Placement Stitch	3840
4. Beard Cut Line & Tackdown	3840
5. Skin	1060
6. White Robe Trim	0015
7. Robe Red Shading	1902
8. Robe Light Shading & Gift	1521
9. Bag	0842
10. Bag Shading & Staff	0853
11. Shoes	4174
12. Shoe Shading	0111
13. Green Gifts	5833
14. Yellow Gift & Star	0640
15. Dark Yellow Gift Shading	0821
16. Staff & Bag Outlines	0933
17. Green Outlines	5643
18. Robe Cover Stitch	1912
19. Beard Cover Stitch & Trim Outlines	3840
20. Gloves	3810
21. Dark Gold Trim & Present Linework	0824
22. Lettering	0015
23. Seam	0020

## 80035-20 Tree

1. Window Placement Stitch	0015
2. Window Cut Line & Tackdown	0015
3. Window Cover Stitch	0015
4. Tree Placement Stitch	5643
5. Tree Cut Line & Tackdown	5643
6. Tree Shading	5722
7. Gold Star, Ornaments & Gift Shading	0821
8. Tree Cover Stitch	5643
9. Blue Gift Shading & Ornament	3810
10. Red Gifts & Ornaments	1902
11. Green Gift & Ornaments	5833
12. Light Blue Gift & Ornament Shading	3840
13. Dark Green Gift & Ornament Shading	5643
14. Purple Gifts & Ornament Shading	2900
15. Dark Red Ornament & Gift Outlines	1912
16. Dark Gold Star & Gift Outlines	0931
17. White Highlights	0015
18. Lettering	1902
19. Seam	0020

Listings below indicate color sample, stitching order and suggested thread color number. Most numbers indicate Isacord thread. However, colors beginning with 20501 refer to YLI Fine Metallics, 7 refer to Yenmet Metallic, 8 refer to YLI Variations Variegated Thread and 9 refer to Isacord Multicolor Variegated.

### 80035-21 Unwrap

1. Gold Tissue	0821
2. Yellow Tissue Shading	0640
3. Tissue Outlines	0931
4. Top Gift Placement Stitch	5643
5. Top Gift Cut Line & Tackdown	5643
6. Middle Gift Placement Stitch	0824
7. Middle Gift Cut Line & Tackdown	0824
8. Bottom Gift Placement Stitch	1902
9. Bottom Gift Cut Line & Tackdown	1902
10. Top Gift Cover Stitch	5643
11. Middle Gift Cover Stitch	0824
12. Bottom Gift Cover Stitch	1902
13. Ribbons	1902
14. Ribbon Outlines	1912
15. Ribbon Shading	1521
16. Lettering	0015
17. Seam	0020

### 80035-22 Voices

1. Snow Placement Stitch	3840
2. Snow Cut Line & Tackdown	3840
3. Book Placement Stitch	0824
4. Book Cut Line & Tackdown	0824
5. Blue Clothing	3810
6. Snow & Blue Clothing Light Shading	3840
7. Note & Book Light Shading	0640
8. Noses, Note & Book Medium Shading	0811
9. Red Clothing	1902
10. Clothing Medium Red Shading	1725
11. Clothing Light Red Shading	1521
12. Green Clothing	5722
13. Green Clothing Light Shading	5531
14. White Lace Trim	0015
15. Hat Light Shading	0111
16. Coal & Hat Dark Shading	4174
17. Red Clothing Dark Shading	1912
18. Dark Green Clothing Outlines	5643
19. Book Cover Stitch, Noses & Note Outlines	0824
20. Cheeks	1860
21. Snow Cover Stitch	3840
22. Mouths & Glove Outlines	3810
23. Lettering	3810
24. Seam	0020

### 80035-23 Wreath

1. Wreath Placement Stitch	5643
2. Wreath Cut Line & Tackdown	5643
3. Large Leaf Shading	5722
4. Small Leaf Dark Shading	5833
5. Small Leaf Light Shading	0352
6. Wreath Cover Stitch	5643
7. Bow Placement Stitch	1912
8. Bow Cut Line & Tackdown	1912
9. Bow Medium Shading	1902
10. Bow Light Shading	1521
11. Bow Cover Stitch	1912
12. Berries	1902
13. Lettering	1912
14. Seam	0020

### 80035-24 X-tra Special

1. Gift Placement Stitch	1902
2. Gift Cut Line & Tackdown	1902
3. Bow	5531
4. Bow Design	5722
5. Gift Cover Stitch	1902
6. Bow Outlines	5643
7. Tag	0015
8. Tag Outlines	0824
9. Stars	0640
10. Lettering	5643
11. Seam	0020

### 80035-25 Yule Log

1. Log Placement Stitch	0933
2. Log Cut Line & Tackdown	0933
3. Log Light Shading	0842
4. Log Medium Shading	0853
5. Log Cover Stitch	0933
6. Light Fire Shading	0640
7. Medium Fire Shading	0811
8. Dark Fire Shading	0931
9. White Fire Shading	0015
10. Lettering	0933
11. Seam	0020

### 80035-26 Zzzzzzzz

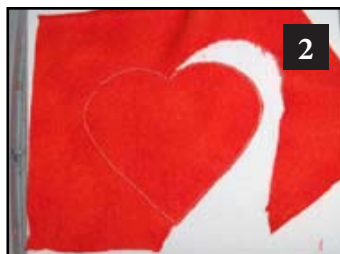
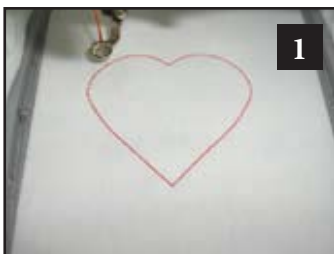
1. Window Placement Stitch	0015
2. Window Cut Line & Tackdown	0015
3. Window Cover Stitch	0015
4. Skin	1060
5. Face & Wood	0853
6. Wood Light Shading	0842
7. Quilt Placement Stitch	1912
8. Quilt Cut Line & Tackdown	1912
9. Green Squares & Sheets	5722
10. Hat & Pillow Stripes	1902
11. Hat Light Shading	1521
12. Beard, Hat & Bedding	0015
13. Wood Dark Shading	0933
14. Hat & Red Cover Stitch	1912
15. Dark Green Linework & Cover Stitch	5643
16. Beard, Hat & Bedding Shading	3840
17. Cat	0640
18. Cat Shading & Stripes	0842
19. Cat Outlines	0931
20. Bow	3810
21. Cheeks & Cat Nose	1860
22. Lettering	4174
23. Seam	0020

### 80035-27 Merry Christmas

1. Lettering	1902
2. Small Leaf Dark Shading	5833
3. Small Leaf Light Shading	0352
4. Large Leaf Dark Shading	5722
5. Large Leaf Light Shading	5531
6. Leaf Outlines	5643
7. Berries	1902
8. Berry Light Shading	1521
9. Berry Outlines	1912
10. Berry Highlights	0015
11. Seam	0020

## Appliqué Instructions

1. Hoop your fabric and backing.
2. Sew the pattern/placement. **PHOTO 1**
3. Place a piece of appliqué fabric over the pattern/placement so that it is completely covered.
4. Sew the trim stitch/tackdown.
5. Carefully cut away the excess appliqué fabric. **PHOTO 2**
6. Sew the remainder of the design and repeat for any remaining pieces. **PHOTO 3**





# Christmas Alphabet

by Krista Hamrick / #80035 / 27 Designs

Listings below indicate color sample, stitching order and suggested thread color number. "I" refers to Isacord thread and "T" refers to Timeless thread. Colors beginning with 20501 refer to YLI Fine Metallics, 7 refer to Yenmet Metallic, 8 refer to YLI Variations Variegated Thread and 9 refer to Isacord Multicolor Variegated.

## 80035-01 Angel

	I	T
1. Halo	0821	26100
2. Halo Light Shading	0640	22106
3. Halo Dark Shading & Outlines	0824	22148
4. Wings	0015	28154
5. Wings Light Shading	3840	14121
6. Hair	0824	22148
7. Hair Gold Shading	0811	22145
8. Hair Dark Shading & Outlines	0931	26118
9. Left Hand & Face	1060	10169
10. Green Dress Shading	5531	18139
11. Medium Green Dress Shading	5722	18151
12. Dark Green Dress Shading & Outlines	5643	18196
13. Dress Placement Stitch	1902	12121
14. Dress Cut Line & Tackdown	1902	12121
15. Dress Cover Stitch & Shading	1902	12121
16. Birds	0015	28154
17. Wings & Bird Outlines	3810	14145
18. Right Hand	1060	10169
19. Beaks	0640	22106
20. Gold Dress Trim	0821	26100
21. Right Sleeve Cover Stitch	5643	18196
22. Skin Outlines	0853	26115
23. Lettering	0015	28154
24. Seam	0020	28151

## 80035-02 Bell

1. Bell Placement Stitch	0015	28154
2. Bell Cut Line & Tackdown	0015	28154
3. Gold Bell Shading	0821	26100
4. Medium Bell Shading	0842	26103
5. Dark Bell Shading	0931	26118
6. Yellow Bell Shading	0640	22106
7. Berries & Red Bell Shading	1902	12121
8. Dark Red Shading	1912	12133
9. Cover Stitch & White Highlights	0015	28154
10. Medium Green Shading & Leaves	5722	18151
11. Light Green Shadings & Leaves	5531	18139
12. Dark Green Shading & Leaf Outlines	5643	18196
13. Berry Highlights	1521	10190
14. Lettering	0015	28154
15. Seam	0020	28151

## 80035-03 Candy Canes

1. Small Leaf Dark Shading	5833	18189
2. Small Leaf Light Shading	0352	18106
3. Large Leaves	5722	18151
4. Large Leaf Light Shading	5531	18139
5. Leaf Outlines	5643	18196
6. White Stripes	0015	28154
7. Red Stripes	1725	12106
8. Candy Cane Shading & Outlines	1902	12121
9. Bow	1902	12121
10. Bow Shading & Outlines	1912	12133
11. Lettering	1902	12121
12. Seam	0020	28151

## 80035-04 Dove

1. Leaves	5833	18189
2. Leaf Light Shading	0352	18106
3. Leaf Outlines & Dark Shading	5643	18196
4. Dove Placement Stitch	3810	14145
5. Dove Cut Line & Tackdown	3810	14145
6. Wings	0015	28154
7. Dove Light Shading	3840	14121
8. Dover Cover Stitch & Linework	3810	14145
9. Bow	1725	12106
10. Bow Medium Shading	1902	12121
11. Bow Outlines	1912	12133
12. Bell Placement Stitch	0931	26118
13. Bell Cut Line & Tackdown	0931	26118
14. Gold Bell Shading	0821	26100
15. Medium Bell Shading	0842	26103
16. White Spots & Bell Highlights	0015	28154
17. Bell Cover Stitch & Dark Shading	0931	26118
18. Bow Red Highlight	1521	10190
19. Lettering	0015	28154
20. Seam	0020	28151

## 80035-05 Evergreen

1. Pine Needles	5722	18151
2. Light Needle Shading	5531	18139
3. Needles Outlines	5643	18196
4. Leaf Highlights	0015	28154
5. Berries	1725	12106
6. Berry Medium Shading	1902	12121
7. Berry Dark Shading & Outlines	1912	12133
8. Pine Cone Placement Stitch	0842	26103
9. Pine Cone Cut Line & Tackdown	0842	26103
10. Pine Cone Dark Shading & Cover Stitch	0933	26148
11. Pine Cone Light Shading & Cover Stitch	0842	26103
12. Berry Light Shading	1521	10190
13. Pine Cone & Berry Highlights	0015	28154
14. Lettering	5643	18196
15. Seam	0020	28151

## 80035-06 Fruitcake

1. Small Leaf Dark Shading	5833	18189
2. Small Leaf Light Shading	0352	18106
3. Large Leaf	5722	18151
4. Large Leaf Highlights	5531	18139
5. Leaf Outlines	5643	18196
6. Berry	1902	12121
7. Cake Placement Stitch	0933	26148
8. Cake Cut Line & Tackdown	0933	26148
9. Cake Medium Shading	0853	26115
10. Cake Highlights	0015	28154
11. Cake Cover Stitch & Shading	0933	26148
12. Stand	1902	12121
13. Stand Highlights	1521	10190
14. Stand Dark Shading & Linework	1912	12133
15. Lettering	5833	18189
16. Seam	0020	28151

## 80035-07 Gingerbread

1. Cookie Placement Stitches	0931	26118
2. Cookie Cut Lines & Tackdowns	0931	26118
3. Girl Medium Shading & Boys Hair	0842	26103
4. Boys Medium Shading	0853	26115
5. Boy & Girl White Shading	0015	28154
6. Boy Cover Stitch, Shading & Girl Hair	0933	26148
7. Girl Cover Stitch & Shading	0931	26118
8. Green Icing	5722	18151
9. Bows & Red Buttons	1902	12121
10. Smiles & Bow Outlines	1912	12133
11. Blue Buttons & Eyes	3810	14145
12. Lettering	3810	14145
13. Stars	0640	22106
14. Star Outlines	0015	28154
15. Seam	0020	28151

## 80035-08 Holly

1. Small Leaves	0352	18106
2. Small Leaf Shading	5833	18189
3. Small Leaf Outlines	5643	18196
4. Stems	0853	26115
5. Berries	1725	12106
6. Berry Medium Shading	1902	12121
7. Berry Light Shading	1521	10190
8. Berry Dark Shading & Outlines	1912	12133
9. Leaf Placement Stitches	5643	18196
10. Leaf Cut Line & Tackdown	5643	18196
11. Large Leaf Medium Shading	5833	18189
12. Large Leaf Light Shading	5531	18139
13. Leaf Cover Stitches	5643	18196
14. Highlights	0015	28154
15. Lettering	1912	12133
16. Seam	0020	28151

## 80035-09 Icicle

1. Wall Placement Stitch	1902	12121
2. Wall Cut Line & Tackdown	1902	12121
3. Window Placement Stitch	0015	28154
4. Window Cut Line & Tackdown	0015	28154
5. Wall Medium Shading	1725	12106
6. Wall Dark Shading	1902	12121
7. Wall Light Shading	1521	10190
8. Wall Cover Stitch	1902	12121
9. Window Shading	0821	26100
10. Window Cover Stitch	0015	28154
11. Snow Placement Stitch	0015	28154
12. Snow Cut Line & Tackdown	0015	28154
13. Snow Cover Stitch	0015	28154
14. Snow Shading	3840	14121
15. Stars	0640	22106
16. Lettering	0015	28154
17. Seam	0020	28151

## 80035-10 Baby Jesus

1. Lamb Placement Stitch	3840	14121
2. Lamb Cut Line & Tackdown	3840	14121
3. Lamb Ears	1860	10109
4. Lamb Face & Ears	0111	28139
5. Lamb Face & Ear Outlines	4174	28148
6. Lamb Cover Stitch	3840	14121
7. Bow	1902	12121
8. Bow Light Shading	1521	10190
9. Bow Outlines	1912	12133
10. Manger Placement Stitch	0933	26148
11. Manger Cut Line & Tackdown	0933	26148
12. Manger Shading & Cover Stitch	0933	26148
13. Straw & Halo	0821	26100
14. Straw & Halo Medium Shading	0842	26103
15. Straw & Halo Light Shading	0640	22106
16. Baby Face	1060	10169
17. Baby Face Outlines	0853	26115
18. Bird	0015	28154
19. Leaves	5531	18139
20. Blanket Placement Stitch	3810	14145
21. Blanket Cut Line & Tackdown	3810	14145
22. Blanket Shading, Cover Stitch & Bird Outlines	3810	14145
23. Halo Outlines, Straw Dark Shading & Cover Stitch	0931	26118
24. Lettering	4174	28148
25. Seam	0020	28151







## Supplies

- OESD Embroidery Collection #80035 Christmas Alphabet by Krista Hamrick
- Medium weight tear-away stabilizer
- ½ yard each of subtle-print background fabrics to become the quilt “blocks”. We used ½ yard each of blue, burgandy, red, cream, leaf green & pine.
- 1 yard of fabric for quilt backing
- ½ yard gold fabric for sashing
- cut into nine strips measuring 1 ½" x width of fabric
- ½ yard fabric for border
- cut into four strips measuring 3 ½" x width of fabric
- ½ yard fabric for binding, or 3 ½ yards of pre-made binding
- ⅛ yard, or scraps of fabric for the appliqué design pieces. We used the following colors: red, white, blue, gold, green, brown, light brown, & purple.
- 35" x 40" batting
- Temporary spray adhesive

## Embroider & Prepare Blocks

- Spray two hoop-sized piece of medium weight tear-away stabilizer with temporary spray adhesive and apply to each other and to the wrong side of a hoop-sized piece of background fabric. Hoop the background fabric and stabilizer together.
- Place the hoop on the machine and stitch the first embroidery design. The final color on each design is notated on the thread chart as “Seam”. This color change should be stitched in a thread color that will blend with the background fabric used for each design.
- Remove the hoop from the machine and the fabric from the hoop.
- Carefully trim all jump threads and gently remove excess stabilizer following the manufacturer’s instructions.
- Repeat for all 27 embroidery files, applying appliqué fabric where required. (Refer to appliqué instructions if needed.)
- Turn each block over and trim to ¼" outside the seam stitch. **See Photo 1**



## Constructions of Blocks

Rather than assembling rows, we will assemble four quadrants. The embroidered squares contained in each quadrant are as follows:

### Quadrant A

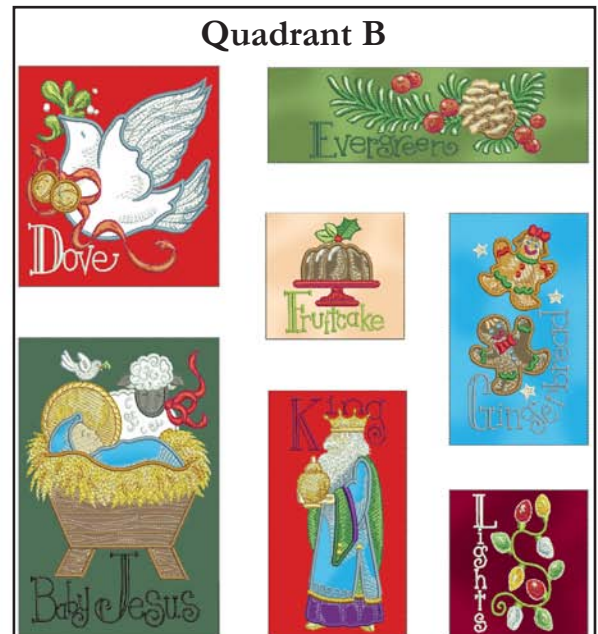
- 80035-01 Angel
- 80035-02 Bells
- 80035-03 Candy Canes
- 80035-08 Holly
- 80035-09 Icicle



### Quadrant B

### Quadrant B

- 80035-04 Dove
- 80035-05 Evergreen
- 80035-06 Fruitcake
- 80035-07 Gingerbread
- 80035-10 Baby Jesus
- 80035-11 King
- 80035-12 Lights



### Quadrant C

- 80035-13 Mistletoe
- 80035-14 Nutcracker
- 80035-15 Ornaments
- 80035-19 Santa
- 80035-20 Tree
- 80035-21 Unwrap
- 80035-24 X-tra Special
- 80035-25 Yule Log



Quadrant C

### Quadrant D

- 80035-16 Poinsettia
- 80035-17 Quiet
- 80035-18 Reindeer
- 80035-22 Voice
- 80035-23 Wreath
- 80035-26 Zzzzzzzz
- 80035-27 Merry Christmas



Quadrant D

## General Assembly Instructions

- Use ¼" seam allowance
- Press each seam to the sashing
- After stitching each combination, square each block component by trimming the excess sashing fabric even with embroidery blocks.
- You do not need to pre-cut the length of your 1 ½" sashing strips to size prior to adding to your embroidery blocks. Instead, stitch larger strips to blocks and then trim to size.

Follow the charts below to assemble each quadrant.

### Quadrant A

- Design 02 + sashing + 03
- 08 + sashing + 09
- 01 + sashing + 02/03 combination
- 01/02/03 combination + sashing + 08/09 combination



### Quadrant B

- Design 04 + sashing + 10
- 06 + sashing + 11
- 07 + sashing + 12
- 06/11 combination + sashing + 07/12 combination
- 05 + sashing + 06/07/11/12 combination
- 04/10 combination + sashing + 05/06/07/11/12 combination

### Quadrant C

- Design 13 + sashing + 19 + sashing + 24
- 14 + sashing + 15
- 20 + sashing + 25
- 20/25 combination + sashing + 21
- 14/15 combination + sashing + 20/25/21 combination
- 13/19/24 combination + sashing + 14/15/20/25/21 combination

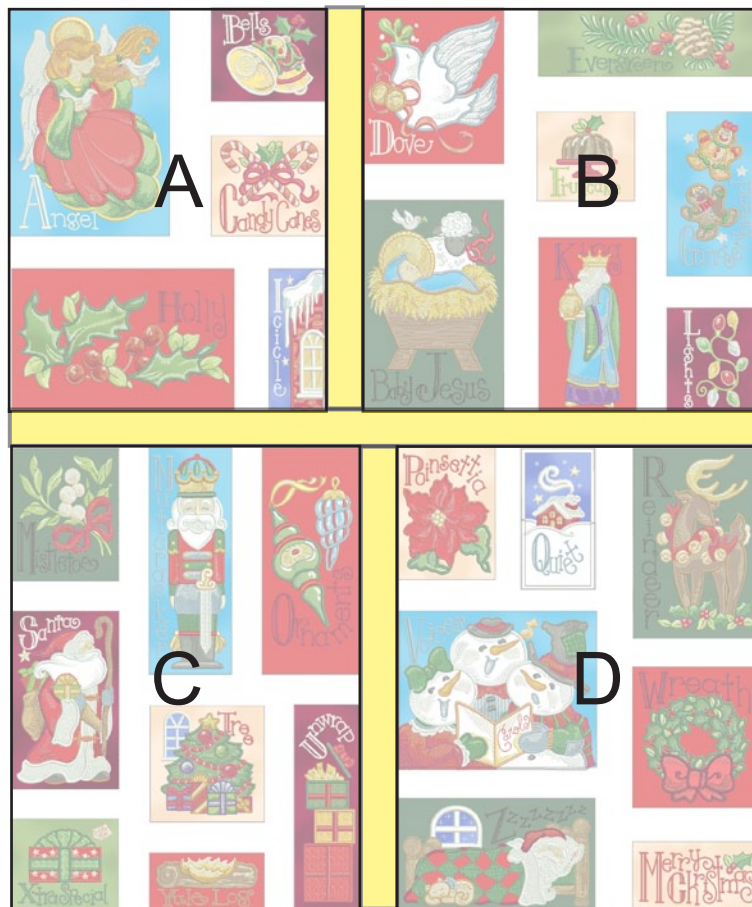


### Quadrant D

- Design 16 + sashing + 17
- 16/17 combination + sashing + 22
- 16/17/22 combination + sashing + 26
- 18 + sashing + 23 + sashing + 27
- 16/17/22/26 combination + sashing + 18/23/27 combination

## Combine Quadrants

- Quadrant A + sashing + Quadrant B = top half
- Quadrant C + sashing + Quadrant D = bottom half
- Top half + sashing + bottom half = quilt center
- Add one more row of sashing to the top and bottom of the quilt center
- Add one more row of sashing to the left and right sides of the quilt center



## Finishing

- Sew the 3 1/2" border strips to the top and bottom of the quilt center then to the sides of the quilt.
- Place backing fabric right side down. Stack batting on wrong side of backing fabric and stack the quilt top down last, right side up. You may wish to use temporary spray adhesive when layering the quilt to hold the layers in place.
- Pin layers together and quilt as desired. We simply stitched in the ditch in our sample.
- Trim batting and backing to the same size as the quilt top.
- Bind the quilt edges using your favorite method.