

Note: Some designs in this collection may have been created using unique special stitches and/or techniques. To preserve design integrity when rescaling or rotating designs in your software, always rescale or rotate designs using the handles directly on-screen.



**80047-01 Ornament Appliqué 1**  
3.45 X 5.07 in.  
87.63 X 128.78 mm  
18,413 St. L



**80047-02 Ornament Appliqué 2**  
3.90 X 4.21 in.  
99.06 X 106.93 mm  
14,571 St.



**80047-03 Ornament Appliqué 3**  
2.85 X 5.47 in.  
72.39 X 138.94 mm  
11,811 St. L



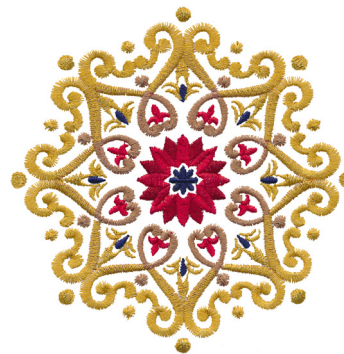
**80047-04 Ornament Appliqué 4**  
3.89 X 4.21 in.  
98.81 X 106.93 mm  
15,528 St.



**80047-05 Ornament Appliqué 5**  
2.35 X 5.52 in.  
59.69 X 140.21 mm  
11,138 St. L



**80047-06 Ornament Appliqué 6**  
4.48 X 4.28 in.  
113.79 X 108.71 mm  
14,783 St.



**80047-07 Snowflake Medallion**  
4.85 X 4.85 in.  
123.19 X 123.19 mm  
14,404 St.



**80047-08 Snowflake Medallion Appliqué**  
4.85 X 4.85 in.  
123.19 X 123.19 mm  
14,463 St.



**80047-09 Holly Accent 1**  
2.72 X 2.42 in.  
69.09 X 61.47 mm  
5,532 St.



**80047-10 Holly Accent 2**  
.99 X 5.06 in.  
25.15 X 128.52 mm  
5,763 St. L S



**80047-11 Holly Accent 3**  
2.70 X 1.58 in.  
68.58 X 40.13 mm  
3,994 St.



**80047-12 Ribbon**  
4.47 X 4.27 in.  
113.54 X 108.46 mm  
10,211 St.

Design contains a loose fill.

Some solid areas shown are not stitched.

L Design is larger than 5" (127 mm) in either direction.

S Design is smaller than 1.5" (38.1 mm) in either direction.

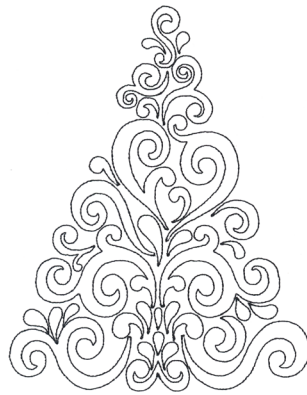
It is a violation of Copyright law to make and distribute copies of electronic designs or artwork.

Electronic designs are licensed to the original purchaser for use at one location. ©2014 Jackie Robinson. All rights reserved.

Note: Some designs in this collection may have been created using unique special stitches and/or techniques. To preserve design integrity when rescaling or rotating designs in your software, always rescale or rotate designs using the handles directly on-screen.



**80047-13 Christmas Tree Swirls**  
5.35 X 6.96 in.  
135.89 X 176.78 mm  
16,867 St. ❄️ L



**80047-14 Christmas Tree Linework**  
5.36 X 6.96 in.  
136.14 X 176.78 mm  
7,911 St. ❄️ L



**80047-15 Snowflake Swirls**  
Linework  
2.92 X 9.10 in.  
74.17 X 231.14 mm  
10,613 St. ❄️ L



**80047-16 Chain Linework**  
1.93 X 9.17 in.  
49.02 X 232.92 mm  
7,244 St. ❄️ L



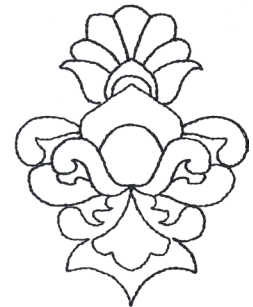
**80047-17 Swirl Linework**  
.78 X 7.22 in.  
19.81 X 183.39 mm  
2,957 St. ❄️ L S



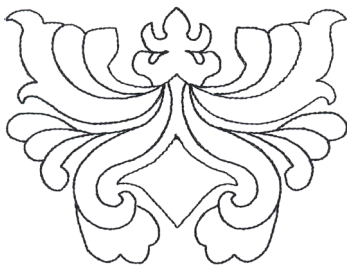
**80047-18 Swirl Accent 1**  
3.89 X 1.70 in.  
98.81 X 43.18 mm  
1,431 St. ❄️



**80047-19 Swirl Accent 2**  
3.06 X 3.10 in.  
77.72 X 78.74 mm  
1,714 St. ❄️



**80047-20 Floral Adornment 1**  
2.46 X 3.22 in.  
62.48 X 81.79 mm  
2,204 St. ❄️



**80047-21 Floral Adornment 2**  
4.54 X 3.44 in.  
115.32 X 87.38 mm  
3,851 St. ❄️



**80047-22 Father Frost Appliqué**  
4.43 X 7.45 in.  
112.52 X 189.23 mm  
30,858 St. ❄️ ❄️ L

❄️ Design contains a loose fill.

❄️ Some solid areas shown are not stitched.

L Design is larger than 5" (127 mm) in either direction.

S Design is smaller than 1.5" (38.1 mm) in either direction.

It is a violation of Copyright law to make and distribute copies of electronic designs or artwork.

Electronic designs are licensed to the original purchaser for use at one location. ©2014 Jackie Robinson. All rights reserved.



# Father Frost

by Jackie Robinson / #80047 / 22 Designs

Listings below indicate color sample, stitching order and suggested thread color number. "I" refers to Isacord thread and "T" refers to Timeless thread. Colors beginning with 20501 refer to YLI Fine Metallics, 7 refer to Yenmet Metallic, 8 refer to YLI Variations Variegated Thread and 9 refer to Isacord Multicolor Variegated.

	I	T		I	T		I	T
<b>80047-01 Ornament Appliqué 1</b>			<b>80047-06 Ornament Appliqué 6</b>			<b>80047-13 Christmas Tree Swirls</b>		
■ 1. Ornament Placement Stitch.....	1912	12133	■ 1. Ornament Placement Stitch.....	0552	20145	■ 1. Green Detail.....	5833	18189
■ 2. Ornament Tackdown.....	1912	12133	■ 2. Ornament Tackdown.....	0552	20145	■ 2. Dark Green Detail.....	5944	18205
■ 3. Ornament Shading.....	1912	12133	■ 3. Ornament Detail.....	0552	20145	■ 3. Red Detail.....	1902	12121
■ 4. Ornament Highlights.....	1730	10193	■ 4. Ornament Highlights.....	0270	20154	■ 4. Gold Shimmers.....	7008	
■ 5. Tan Filigree.....	0552	20145	■ 5. Gold Detail.....	0721	20142			
■ 6. Gold Outlines.....	0721	20142	■ 6. Gold Shimmers.....	7008		<b>80047-14 Christmas Tree Linework</b>		
■ 7. Gold Shimmers.....	7008		■ 7. Ribbon.....	1912	12133	■ 1. Single Color Design.....	0020	28151
■ 8. Leaves.....	5833	18189	■ 8. Ribbon Highlights.....	1902	12121			
■ 9. Leaf Shading.....	5944	18205	■ 9. Ribbon Detail.....	0552	20145	<b>80047-15 Snowflake Swirls Linework</b>		
■ 10. Leaf Veins.....	0352	18106				■ 1. Single Color Design.....	0020	28151
■ 11. Berries.....	1912	12133	<b>80047-07 Snowflake Medallion</b>					
■ 12. Berry Highlights.....	1900	12115	■ 1. Blue Detail.....	3323	14166	<b>80047-16 Chain Linework</b>		
■ 13. Berry Center.....	2115	12145	■ 2. Maroon Detail.....	1912	12133	■ 1. Single Color Design.....	0020	28151
			■ 3. Red Detail.....	1900	12115			
<b>80047-02 Ornament Appliqué 2</b>			■ 4. Brown Detail.....	0853	26115	<b>80047-17 Swirl Linework</b>		
■ 1. Ornament Placement Stitch.....	0552	20145	■ 5. Tan Detail.....	0721	20142	■ 1. Single Color Design.....	0020	28151
■ 2. Ornament Tackdown.....	0552	20145	■ 6. Gold Shimmers.....	7008				
■ 3. Ornament Shading.....	0552	20145				<b>80047-18 Swirl Accent 1</b>		
■ 4. Ornament Highlights.....	0270	20154	<b>80047-08 Snowflake Medallion Appliqué</b>			■ 1. Single Color Design.....	0020	28151
■ 5. Gold Detail.....	0721	20142	■ 1. Snowflake Placement Stitch.....	1912	12133			
■ 6. Ribbon.....	1912	12133	■ 2. Snowflake Tackdown.....	1912	12133	<b>80047-19 Swirl Accent 2</b>		
■ 7. Ribbon Highlights.....	1902	12121	■ 3. Circle Placement Stitch.....	0721	20142	■ 1. Single Color Design.....	0020	28151
■ 8. Ribbon & Cap Detail.....	0552	20145	■ 4. Circle Tackdown.....	0721	20142			
■ 9. Gold Shimmers.....	7008		■ 5. Red Detail.....	1900	12115	<b>80047-20 Floral Adornment 1</b>		
<b>80047-03 Ornament Appliqué 3</b>			■ 6. Maroon Detail.....	1912	12133	■ 1. Single Color Design.....	0020	28151
■ 1. Ornament Placement Stitch.....	0552	20145	■ 7. Blue Detail.....	3323	14166			
■ 2. Ornament Tackdown.....	0552	20145	■ 8. Brown Detail.....	0853	26115	<b>80047-21 Floral Adornment 2</b>		
■ 3. Ornament Shading.....	0552	20145	■ 9. Tan Detail.....	0721	20142	■ 1. Single Color Design.....	0020	28151
■ 4. Ornament Highlights.....	0270	20154	■ 10. Gold Shimmers.....	7008				
■ 5. Gold Shimmers.....	7008		<b>80047-09 Holly Accent 1</b>			<b>80047-22 Father Frost Appliqué</b>		
■ 6. Leaves.....	5833	18189	■ 1. Leaves.....	5833	18189	■ 1. Skirt Placement Stitch.....	5833	18189
■ 7. Leaf Shading.....	5944	18205	■ 2. Leaf Shading.....	5944	18205	■ 2. Skirt Tackdown.....	5833	18189
■ 8. Red Detail.....	1902	12121	■ 3. Leaf Veins.....	0352	18106	■ 3. Small Tree.....	5833	18189
■ 9. Leaf Veins.....	0352	18106	■ 4. Berries.....	1912	12133	■ 4. Skirt & Tree Shading.....	5944	18205
■ 10. Cap.....	0721	20142	■ 5. Berry Highlights.....	1900	12115	■ 5. Tree Cane.....	0853	26115
■ 11. Berries & Ornament Detail.....	1912	12133	■ 6. Berry Centers.....	2115	12145	■ 6. Maroon Detail.....	1912	12133
■ 12. Berry Highlights.....	1900	12115			■ 7. Bag Placement Stitch.....	3810	14145	
■ 13. Berry Centers.....	2115	12145	<b>80047-10 Holly Accent 2</b>			■ 8. Bag Tackdown.....	3810	14145
<b>80047-04 Ornament Appliqué 4</b>			■ 1. Leaves.....	5833	18189	■ 9. Bag Shading.....	3810	14145
■ 1. Ornament Placement Stitch.....	3323	14166	■ 2. Leaf Shading.....	5944	18205	■ 10. Bag Highlights.....	3762	14142
■ 2. Ornament Tackdown.....	3323	14166	■ 3. Leaf Veins.....	0352	18106	■ 11. Left Glove & Sleeve.....	1912	12133
■ 3. Ornament Shading.....	3323	14166	■ 4. Berries.....	1912	12133	■ 12. Red Shading.....	1902	12121
■ 4. Ornament Highlights.....	3815	14136	■ 5. Berry Highlights.....	1900	12115	■ 13. Beard Placement Stitch.....	0015	28154
■ 5. Cap.....	0721	20142	■ 6. Berry Centers.....	2115	12145	■ 14. Beard Tackdown.....	0015	28154
■ 6. Ribbon.....	1912	12133	<b>80047-11 Holly Accent 3</b>			■ 15. Face.....	1140	20115
■ 7. Ribbon Highlights.....	1902	12121	■ 1. Leaves.....	5833	18189	■ 16. Cheek.....	2550	10142
■ 8. Tan Detail.....	0552	20145	■ 2. Leaf Shading.....	5944	18205	■ 17. Face Detail.....	1123	20130
■ 9. Gold Shimmers.....	7008		■ 3. Leaf Veins.....	0352	18106	■ 18. Fringe & Beard.....	0015	28154
<b>80047-05 Ornament Appliqué 5</b>			■ 4. Berries.....	1912	12133	■ 19. Robe Highlights.....	1900	12115
■ 1. Ornament Placement Stitch.....	0552	20145	■ 5. Berry Highlights.....	1900	12115	■ 20. Tan Detail.....	0552	20145
■ 2. Ornament Tackdown.....	0552	20145	■ 6. Berry Centers.....	2115	12145	■ 21. Gold Shimmers.....	7008	
■ 3. Ornament Shading.....	0552	20145						
■ 4. Ornament Highlights.....	0270	20154	<b>80047-12 Ribbon</b>					
■ 5. Leaves.....	5833	18189	■ 1. Ribbon.....	1912	12133			
■ 6. Leaf Shading.....	5944	18205	■ 2. Ribbon Highlights.....	1902	12121			
■ 7. Leaf Veins.....	0352	18106	■ 3. Ribbon Detail.....	0552	20145			
■ 8. Berries & Detail.....	1912	12133						
■ 9. Berry Highlights.....	1900	12115						
■ 10. Berry Centers.....	2115	12145						
■ 11. Tan Detail.....	0721	20142						
■ 12. Brown Detail.....	0853	26115						
■ 13. Gold Shimmers.....	7008							

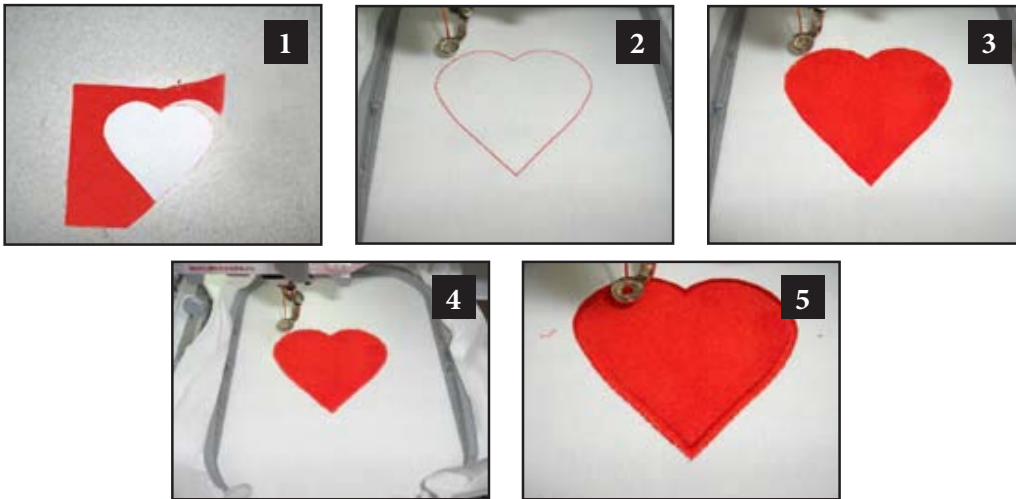


## Pre-Cut Appliqué Instructions

1. Print out the necessary pages from the PDF of the appliqué pattern(s).
2. Mark the right side of the pattern pieces so you'll know which direction to lay the pattern on the fabric.
3. Lightly spray the wrong side of the pattern pieces with temporary adhesive spray and allow it to set for a few minutes.
4. Place the pattern pieces on the right side of the fabric and carefully cut them out. **PHOTO 1**
5. Sew the placement stitch on your hooped fabric. **PHOTO 2**
6. With the paper still stuck to the right side of the appliqué fabric, spray the wrong side of the fabric with temporary spray adhesive.
7. Place the fabric inside the sewing placement stitch so that it matches the stitching line, and then remove the paper pattern. **PHOTO 3**
8. Sew the tackdown. **PHOTO 4**
9. Sew the remainder of the design and repeat for any remaining pieces. **PHOTO 5**

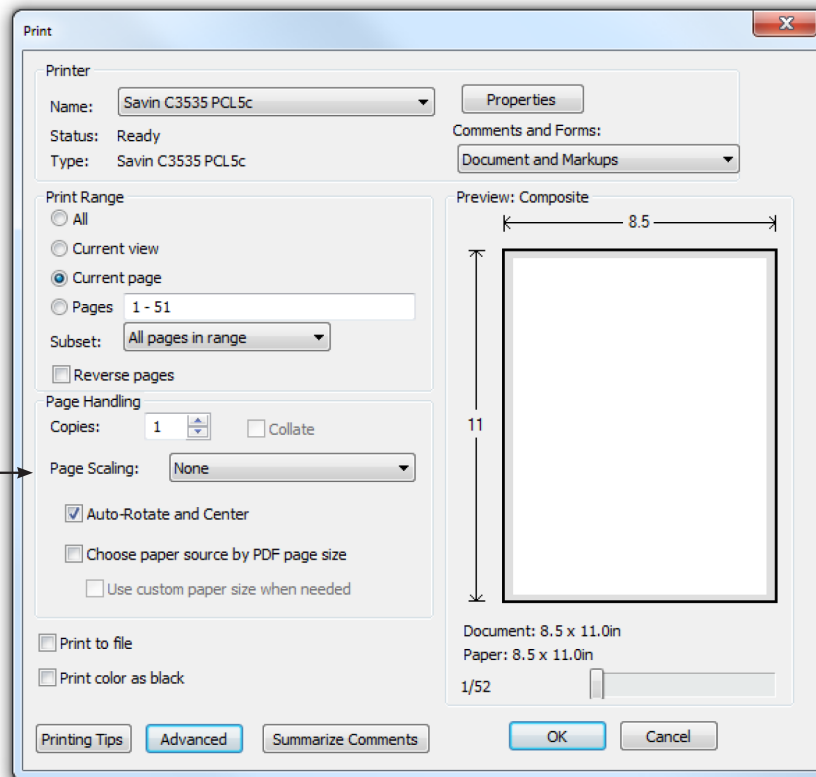
**NOTE:** The patterns are sized for the designs as they were made. If you resize the design, you will need to resize the pattern the same amount. You can print out the pattern at the normal size then copy it on a copy machine at the changed size. For example, resize the designs to 80%, resize the printed pattern to 80%.

**TIP:** When Printing the patterns, make sure that the "Fit to page" option is **UNCHECKED** in the Print Dialog Box. If this option is checked the printed patterns will not be actual size.



## ATTENTION

When printing this document, any page scaling or page fitting options in your print dialog box must be turned OFF or set to NONE so that your files will print out at their actual size. Images not printed at actual size will not function as intended.



## TO SAVE PAPER

Only print the desired image by navigating to the image's page, go to File > Print and select "Current page" in the print dialog box. Repeat for each desired image.

