

Note: Some designs in this collection may have been created using unique special stitches and/or techniques. To preserve design integrity when rescaling or rotating designs in your software, always rescale or rotate designs using the handles directly on-screen.



80098-01 Vintage Sewing Machine Appliqué
4.88 X 5.02 in.
123.95 X 127.51 mm
5,638 St.



80098-02 Vintage Sewing Machine
3.65 X 3.75 in.
92.71 X 95.25 mm
10,567 St.



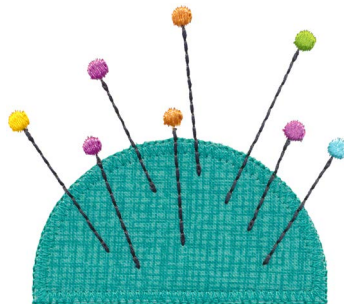
80098-03 Thread Spools Appliqué
4.33 X 2.68 in.
109.98 X 68.07 mm
4,810 St.



80098-04 Thread Spools
2.63 X 1.64 in.
66.80 X 41.66 mm
5,893 St.



80098-05 Needle and Threads
4.42 X 2.33 in.
112.27 X 59.18 mm
4,545 St.



80098-06 Pincushion Appliqué
3.43 X 3.04 in.
87.12 X 77.22 mm
2,073 St.



80098-07 Colorful Safety Pins
1.97 X 2.12 in.
50.04 X 53.85 mm
2,191 St.



80098-08 Colorful Buttons
1.91 X 2.09 in.
48.51 X 53.09 mm
4,044 St.



80098-09 Scissors
2.06 X 5.21 in.
52.32 X 132.33 mm
4,745 St.



80098-10 Colorful Floral Linework 1
3.70 X 3.15 in.
93.98 X 80.01 mm
1,795 St.



80098-11 Colorful Floral Linework 2
3.17 X 7.72 in.
80.52 X 196.09 mm
3,237 St.



80098-12 Colorful Floral Linework 3
4.54 X 6.60 in.
115.32 X 167.64 mm
3,778 St.

Listings below indicate color sample, stitching order and suggested thread color number. Most numbers indicate Isacord thread. Colors beginning with 20501 refer to YLI Fine Metallics, 7 refer to Yenmet Metallic, 8 refer to YLI Variations Variegated Thread and 9 refer to Isacord Multicolor Variegated.

80098-01 Vintage Sewing Machine Appliqué

■ 1.Machine Placement Stitch.....	0020
■ 2.Tackdown & Design Detail.....	0020
■ 3.Thread.....	2510
□ 4.Floral Detail.....	0015

80098-02 Vintage Sewing Machine

■ 1.Machine.....	0020
■ 2.Thread.....	2510
□ 3.Floral Detail.....	0015

80098-03 Thread Spools Appliqué

■ 1.Spools Placement Stitch.....	0020
■ 2.Spools Tackdown.....	0020
■ 3.Left Thread Placement Stitch.....	2510
■ 4.Left Tackdown & Outline.....	2510
■ 5.Right Thread Placement Stitch.....	1010
■ 6.Right Tackdown & Outline.....	1010

80098-04 Thread Spools

■ 1.Spools.....	0020
■ 2.Blue Thread.....	4430
■ 3.Orange Thread.....	1010

80098-05 Needle and Threads

■ 1.Spools.....	0741
■ 2.Yellow Thread.....	0311
■ 3.Purple Thread.....	2510
■ 4.Needle.....	4174

80098-06 Pincushion Appliqué

□ 1.Pincushion Placement Stitch.....	0015
■ 2.Tackdown & Outline.....	5115
■ 3.Pins.....	4174
■ 4.Orange Tops.....	1010
■ 5.Green Top.....	5912
■ 6.Yellow Top.....	0311
■ 7.Purple Tops.....	2510
■ 8.Blue Top.....	4430

80098-07 Colorful Safety Pins

■ 1.Green Detail.....	5912
■ 2.Yellow Detail.....	0311
■ 3.Orange Detail.....	1010
■ 4.Purple Detail.....	2510
■ 5.Blue Detail.....	4430
■ 6.Pins.....	4174

80098-08 Colorful Buttons

■ 1.Black Button.....	0020
■ 2.Blue Button.....	4430
■ 3.Yellow Button.....	0311
■ 4.Green Button.....	5912
■ 5.Purple Buttons.....	2510
□ 6.White Detail.....	0015

80098-09 Scissors

■ 1.Single Color Design.....	0020
------------------------------	------

80098-10 Colorful Floral Linework 1

■ 1.Yellow Detail.....	0311
■ 2.Purple Detail.....	2510
■ 3.Blue Detail.....	4430
■ 4.Orange Detail.....	1010

80098-11 Colorful Floral Linework 2

■ 1.Yellow Detail.....	0311
■ 2.Orange Detail.....	1010
■ 3.Green Detail.....	5912

80098-12 Colorful Floral Linework 3

■ 1.Purple Detail.....	2510
■ 2.Yellow Detail.....	0311
■ 3.Green Detail.....	5912
■ 4.Orange Detail.....	1010

Isacord Thread Colors Used in "Sew Sew"

By Benartex Studios

Collection #80098

0015 White	1010 Toast	4430 Island Waters
0020 Black	2510 Roseate	5115 Baccarat Green
0311 Canary	4174 Charcoal	5912 Erin Green
0741 Wheat		

Cut-in-Place Appliqué Instructions

1. Hoop your fabric and backing.
2. Sew the placement stitch. **PHOTO 1**
3. Place a piece of appliqué fabric over the placement stitch so that it is completely covered.
4. Sew the cut line & tackdown.
5. Carefully cut away the excess appliqué fabric. **PHOTO 2**
6. Sew the remainder of the design and repeat for any remaining pieces. **PHOTO 3**

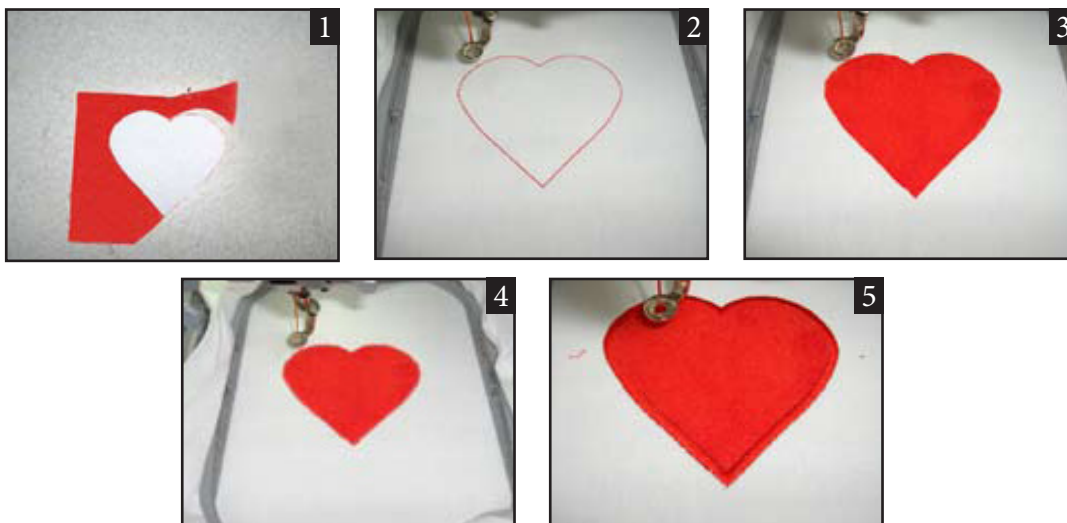


Pre-Cut Appliqué Instructions

1. Print out the necessary pages from the PDF of the appliqué pattern(s).
2. Mark the right side of the pattern pieces so you'll know which direction to lay the pattern on the fabric.
3. Lightly spray the wrong side of the pattern pieces with temporary adhesive spray and allow it to set for a few minutes.
4. Place the pattern pieces on the right side of the fabric and carefully cut them out. **PHOTO 1**
5. Sew the placement stitch on your hooped fabric. **PHOTO 2**
6. With the paper still stuck to the right side of the appliqué fabric, spray the wrong side of the fabric with temporary spray adhesive.
7. Place the fabric inside the placement stitch, so that it completely covers the placement stitch and then remove the paper pattern. **PHOTO 3**
8. Sew the tackdown. **PHOTO 4**
9. Sew the remainder of the design and repeat for any remaining pieces. **PHOTO 5**

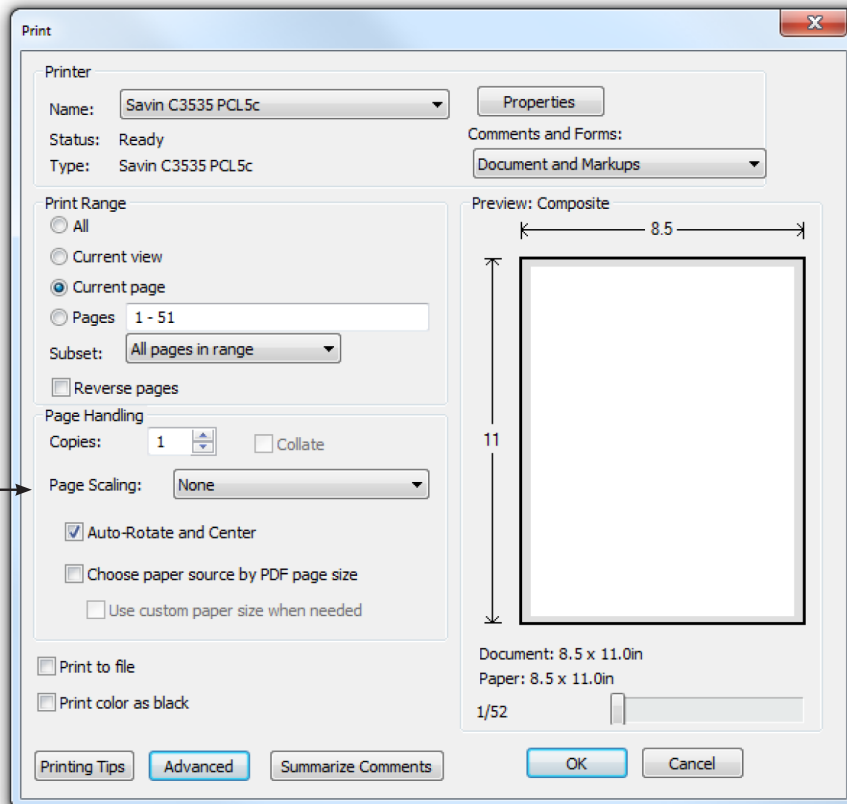
NOTE: The patterns are sized for the designs as they were made. If you resize the design, you will need to resize the pattern the same amount. You can print out the pattern at the normal size then copy it on a copy machine at the changed size. For example, resize the designs to 80%, resize the printed pattern to 80%.

TIP: When Printing the patterns, make sure that the “Fit to page” option is **UNCHECKED** in the Print Dialog Box. If this option is checked the printed patterns will not be actual size.



ATTENTION

When printing this document, any page scaling or page fitting options in your print dialog box must be turned OFF or set to NONE so that your files will print out at their actual size. Images not printed at actual size will not function as intended.



TO SAVE PAPER

Only print the desired image by navigating to the image's page, go to File > Print and select "Current page" in the print dialog box. Repeat for each desired image.

