

Note: Some designs in this collection may have been created using unique special stitches and/or techniques. To preserve design integrity when rescaling or rotating designs in your software, always rescale or rotate designs using the handles directly on-screen.



80133-01 Chase Your Dreams
5.09 X 7.01 in.
129.29 X 178.05 mm
37,973 St.



80133-02 Create
5.45 X 6.73 in.
138.43 X 170.94 mm
37,073 St.



80133-03 Choose Joy
5.25 X 6.85 in.
133.35 X 173.99 mm
45,274 St.



80133-04 Choose Your Path
5.25 X 6.96 in.
133.35 X 176.78 mm
28,612 St.



80133-05 The Journey Is Within
5.35 X 6.97 in.
135.89 X 177.04 mm
32,982 St.



80133-06 Love Love Love
5.26 X 6.39 in.
133.60 X 162.31 mm
42,104 St.



80133-07 Go Your Own Way
5.00 X 6.61 in.
127.00 X 167.89 mm
26,192 St.



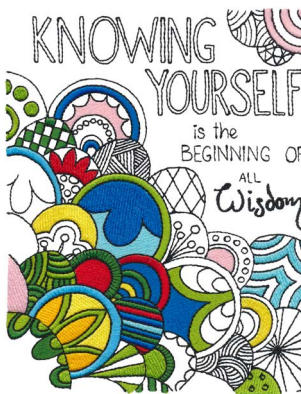
80133-08 Follow Your Dreams
5.25 X 6.59 in.
133.35 X 167.39 mm
44,470 St.



80133-09 To the Moon and Back
Jumbo
9.00 X 12.32 in.
228.60 X 312.93 mm
37,174 St.



80133-10 Be the Change
5.00 X 6.38 in.
127.00 X 162.05 mm
31,925 St.

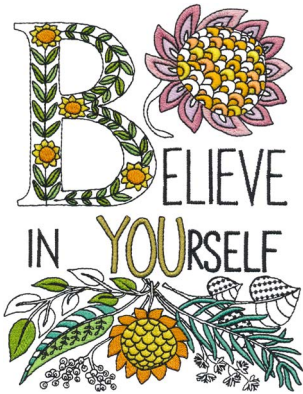


80133-11 Knowing Yourself
5.26 X 6.64 in.
133.60 X 168.66 mm
39,364 St.



80133-12 Be the Best
5.30 X 6.43 in.
134.62 X 163.32 mm
33,738 St.

Note: Some designs in this collection may have been created using unique special stitches and/or techniques. To preserve design integrity when rescaling or rotating designs in your software, always rescale or rotate designs using the handles directly on-screen.



80133-13 Believe in Yourself
5.23 X 6.87 in.
132.84 X 174.50 mm
46,045 St.



80133-14 Sing Your Song
5.00 X 6.65 in.
127.00 X 168.91 mm
42,688 St.



**80133-15 Make Today
Ridiculously Amazing**
5.30 X 6.92 in.
134.62 X 175.77 mm
33,253 St.



80133-16 Forever
5.55 X 6.93 in.
140.97 X 176.02 mm
48,764 St.



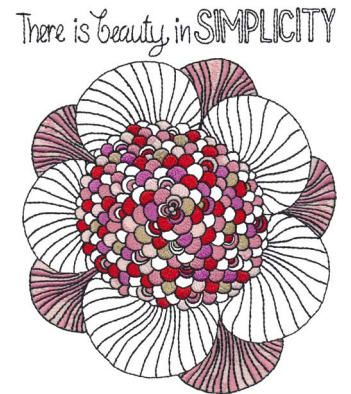
**80133-17 Collect Moments Not
Things**
5.34 X 6.81 in.
135.64 X 172.97 mm
24,696 St.



80133-18 Breathe
5.21 X 6.62 in.
132.33 X 168.15 mm
34,097 St.



80133-19 Adventure Awaits
5.34 X 6.69 in.
135.64 X 169.93 mm
37,317 St.



80133-20 Simplicity
5.20 X 6.34 in.
132.08 X 161.04 mm
41,177 St.



80133-21 Love
5.25 X 6.41 in.
133.35 X 162.81 mm
24,687 St.



80133-22 Keep Life Simple
5.27 X 7.47 in.
133.86 X 189.74 mm
38,301 St.



80133-23 Wisdom
5.39 X 6.85 in.
136.91 X 173.99 mm
46,502 St.



80133-24 Live in the Moment
5.31 X 7.04 in.
134.87 X 178.82 mm
56,813 St.

Note: Some designs in this collection may have been created using unique special stitches and/or techniques. To preserve design integrity when rescaling or rotating designs in your software, always rescale or rotate designs using the handles directly on-screen.



80133-25 Make Beautiful Things

5.30 X 6.77 in.
134.62 X 171.96 mm
35,921 St.



80133-26 Today Is the Day

5.25 X 7.17 in.
133.35 X 182.12 mm
39,051 St.



80133-27 Possibilities

5.37 X 6.83 in.
136.40 X 173.48 mm
45,852 St.

Listings below indicate color sample, stitching order and suggested thread color number. Most numbers indicate Isacord thread. Colors beginning with 20501 refer to YLI Fine Metallics, 7 refer to Yenmet Metallic, 8 refer to YLI Variations Variegated Thread and 9 refer to Isacord Multicolor Variegated.

80133-01 Chase Your Dreams

1. Aqua Detail.....	4230
2. Chartreuse Detail.....	5830
3. Yellow Detail.....	0310
4. Heather Pink Detail.....	2152
5. Lime Leaves.....	5633
6. Erin Green Feather Detail.....	5912
7. Seaweed Detail.....	0232
8. Metallic Gold Detail.....	7008
9. Cerulean Feather Detail.....	3900
10. Crystal Blue Feather Detail.....	3910
11. Iced Pink Dots.....	2160
12. Blossom Detail.....	1921
13. White Detail.....	0015
14. Black Detail.....	0020

80133-02 Create

1. Spearmint Leaves.....	4240
2. Crystal Blue Leaves.....	3910
3. Cerulean Leaves.....	3900
4. Strawberries n Cream Detail.....	1753
5. Soft Pink Wings.....	2550
6. Aura Detail.....	2655
7. Limabean Leaves.....	5833
8. Erin Green Leaves.....	5912
9. Lime Leaves.....	5633
10. Yellow Petals.....	0310
11. White Stems.....	0015
12. Dark Rattan Letters and Stems.....	0763
13. Black Detail.....	0020

80133-03 Choose Joy

1. Spearmint Detail.....	4240
2. Chartreuse Leaves.....	5830
3. Limabean Detail.....	5833
4. Cerulean Detail.....	3900
5. Yellow Detail.....	0310
6. Seaweed Detail.....	0232
7. Metallic Gold Detail.....	7008
8. Lemon Frost Detail.....	0250
9. White Stems.....	0015
10. Crystal Blue Detail.....	3910
11. Letters.....	0015
12. Black Detail.....	0020

80133-04 Choose Your Path

1. Lime Detail.....	5633
2. Petal Pink Stamen.....	2250
3. Aura Stamen.....	2655
4. Blossom Stamen.....	1921
5. Heather Pink Stamen.....	2152
6. Yellow Mushrooms.....	0310
7. Seaweed Mushroom Shading.....	0232
8. Metallic Gold Detail.....	7008
9. Black Detail.....	0020

80133-05 The Journey Is Within

1. Petal Pink Detail.....	2250
2. Blossom Detail.....	1921
3. Poinsettia Detail.....	1902
4. Seaweed Detail.....	0232
5. Yellow Detail.....	0310
6. Metallic Gold Detail.....	7008
7. Bronze Detail.....	1032
8. Black Detail.....	0020

80133-06 Love Love Love

1. Yellow Petals.....	0310
2. Sunset Orange Petals.....	1200
3. Erin Green Leaves.....	5912
4. Seaweed Leaves.....	0232
5. Metallic Gold Detail.....	7008
6. Chartreuse Detail.....	5830
7. Lime Detail.....	5633
8. Roseate Detail.....	2510
9. Impatiens Detail.....	2650
10. Crystal Blue Detail.....	3910
11. White Stems.....	0015
12. Candy Apple Detail.....	1704
13. Red Berry Detail.....	1701
14. Strawberries n Cream Detail.....	1753
15. Black Detail.....	0020

80133-07 Go Your Own Way

1. Seaweed Arrow Tips.....	0232
2. Metallic Gold Detail.....	7008
3. Limabean Leaves.....	5833
4. Green Leaves.....	5100
5. Erin Green Leaves.....	5912
6. Yellow Feather.....	0310
7. Red Berry Detail.....	1701
8. Spearmint Detail.....	4240
9. Crystal Blue Detail.....	3910
10. Hint of Blue Detail.....	3963
11. Cerulean Detail.....	3900
12. Aura Detail.....	2655
13. Roseate Leaves.....	2510
14. Soft Pink Detail Petals.....	2550
15. Candy Apple Detail.....	1704
16. White Detail.....	0015
17. Black Detail.....	0020

80133-08 Follow Your Dreams

1. Yellow Detail.....	0310
2. Gold Detail.....	0704
3. Metallic Gold Detail.....	7008
4. Seaweed Detail.....	0232
5. Lime Detail.....	5633
6. Red Berry Petals.....	1701
7. Erin Green Detail.....	5912
8. Soft Pink Detail.....	2550
9. Cerulean Detail.....	3900
10. Spearmint Detail.....	4240
11. Crystal Blue Detail.....	3910
12. Seaweed Detail.....	0232
13. Metallic Gold Detail.....	7008
14. Lime Detail.....	5633
15. Black Detail.....	0020

80133-09 To the Moon and Back Jumbo

1. Yellow Detail.....	0310
2. Papaya Detail.....	0702
3. Seaweed Stars.....	0232
4. Metallic Gold Detail.....	7008
5. Aura Hearts.....	2655
6. Soft Pink Heart and Shading.....	2550
7. Black Detail.....	0020

80133-10 Be the Change

1. Heather Pink Detail.....	2152
2. Blossom Detail.....	1921
3. Blossom Detail.....	2250
4. Yellow Detail.....	0310
5. Goldenrod Detail.....	0800
6. Lime Leaves.....	5633
7. Spearmint Detail.....	4240
8. Chartreuse Leaves.....	5830
9. Erin Green Leaves.....	5912
10. Dark Jade Detail.....	5101
11. White Letters.....	0015
12. Black Detail.....	0020

80133-11 Knowing Yourself

1. Petal Pink Detail.....	2250
2. Spearmint Detail.....	4240
3. Yellow Detail.....	0310
4. Erin Green Detail.....	5912
5. Goldenrod Detail.....	0800
6. Candy Apple Detail.....	1704
7. Lime Detail.....	5633
8. Crystal Blue Detail.....	3910
9. Cerulean Detail.....	3900
10. Black Detail.....	0020

80133-12 Be the Best

1. Persimmon Detail.....	1730
2. Heather Pink Detail.....	2152
3. Yellow Detail.....	0310
4. Seaweed Detail.....	0232
5. Metallic Gold Detail.....	7008
6. White Detail.....	0015
7. Black Detail.....	0020

80133-13 Believe in Yourself

1. Yellow Detail.....	0310
2. Spanish Gold Detail.....	0904
3. Goldenrod Detail.....	0800
4. Passion Fruit Detail.....	1030
5. Aura Detail.....	2655
6. Iced Pink Detail.....	2160
7. Heather Pink Detail.....	2152
8. Chartreuse Detail.....	5830
9. Bottle Green Detail.....	5230
10. Erin Green Detail.....	5912
11. Gold Letters.....	0232
12. Metallic Gold Detail.....	7008
13. Black Detail.....	0020

80133-14 Sing Your Song

1. Chartreuse Leaves.....	5830
2. Erin Green Leaves.....	5912
3. Aqua Leaves.....	4230
4. Iced Pink Bird.....	2160
5. Heather Pink Detail.....	2152
6. Geranium Detail.....	1900
7. Brown Stem.....	0874
8. Gold Beak.....	0232
9. Metallic Gold Detail.....	7008
10. Gold Feet.....	0232
11. Black Detail.....	0020

80133-15 Make Today Ridiculously Amazing

1. Erin Green Leaves.....	5912
2. Crystal Blue Scales.....	3910
3. Tropical Blue Scales.....	3901
4. Chartreuse Leaves.....	5830
5. Black Detail.....	0020

Listings below indicate color sample, stitching order and suggested thread color number. Most numbers indicate Isacord thread. Colors beginning with 20501 refer to YLI Fine Metallics, 7 refer to Yenmet Metallic, 8 refer to YLI Variations Variegated Thread and 9 refer to Isacord Multicolor Variegated.

80133-16 Forever

1. Erin Green Leaves	5912
2. Seaweed Detail	0232
3. Stems	0862
4. Pink Tulip Petals	2155
5. Heather Pink Petal Shading	2152
6. Black Detail	0020

80133-17 Collect Moments Not Things

1. Heather Pink Hearts	2152
2. Candy Apple Hearts	1704
3. Yellow Stars	0310
4. Seaweed Stars	0232
5. Metallic Gold Detail	7008
6. Black Detail	0020

80133-18 Breathe

1. Daffodil Detail	0520
2. Yellow Detail	0310
3. Bright Yellow Detail	0700
4. Petal Pink Detail	2250
5. Soft Pink Detail	2550
6. Persimmon Detail	1730
7. Chartreuse Leaves	5830
8. Ming Green Leaves	5513
9. Erin Green Leaves	5912
10. Lime Leaves	5633
11. Black Detail	0020

80133-19 Adventure Awaits

1. Petal Pink Ears	2250
2. Ming Green Leaves	5513
3. Roseate Petals	2510
4. Erin Green Leaves	5912
5. Bottle Green Detail	5230
6. Seaweed Leaves	0232
7. Metallic Gold Detail	7008
8. Lime Leaves	5633
9. Yellow Detail	0310
10. Candy Apple Stamen	1704
11. Eyes	4174
12. Coral Petals	1532
13. Nose	2152
14. Black Detail	0020

80133-20 Simplicity

1. Seaweed Detail	0232
2. Metallic Gold Detail	7008
3. Chiffon Detail	2170
4. Roseate Detail	2510
5. Heather Pink Detail	2152
6. Candy Apple Detail	1704
7. Black Detail	0020

80133-21 Love

1. Chartreuse Detail	5830
2. Roseate Detail	2510
3. Petal Pink Detail	2250
4. Ming Leaves	5513
5. Heather Pink Detail	2152
6. Grasshopper Leaves	5933
7. Candy Apple Detail	1704
8. Erin Green Detail	5912
9. Black Detail	0020

80133-22 Keep Life Simple

1. Erin Green Leaves	5912
2. Ming Green Stem and Leaves	5513
3. Heather Pink Petals	2152
4. Petal Pink Detail	2250
5. Candy Apple Petals	1704
6. Amethyst Petals	3030
7. Spearmint Bike Frame	4240
8. Seaweed Wheel	0232
9. Metallic Gold Detail	7008
10. Black Detail	0020

80133-23 Wisdom

1. River Mist Detail	3962
2. Erin Green Detail	5912
3. Tropical Blue Detail	3901
4. Spearmint Detail	4240
5. Crystal Blue Detail	3910
6. Parchment Detail	0640
7. Yellow Detail	0310
8. Chartreuse Detail	5830
9. Golden Brown Detail	0747
10. Swiss Ivy Detail	5422
11. Moss Detail	0345
12. Black Detail	0020

80133-24 Live in the Moment

1. Heather Pink Detail	2152
2. Blossom Detail	1921
3. Roseate Detail	2510
4. Red Berry Detail	1701
5. Black Detail	0020

80133-25 Make Beautiful Things

1. Erin Green Leaves	5912
2. Yellow Bird Detail	0506
3. Candy Apple Detail	1704
4. Pumpkin Detail	1102
5. Crystal Blue Detail	3910
6. Tropical Blue Detail	3901
7. River Mist Detail	3962
8. Black Detail	0020

80133-26 Today Is the Day

1. Yellow Detail	0310
2. Strawberries n Cream Detail	1753
3. Aura Detail	2655
4. Spearmint Detail	4240
5. Petal Pink Detail	2250
6. Jade Detail	4620
7. Spanish Tile Detail	1600
8. Erin Green Detail	5912
9. River Mist Detail	3962
10. Crystal Blue Detail	3910
11. Black Detail	0020

80133-27 Possibilities

1. Corsage Detail	1840
2. Strawberries n Cream Detail	1753
3. Passion Fruit Detail	1030
4. Melon Detail	1430
5. Yellow Detail	0310
6. Bright Yellow Detail	0700
7. Petal Pink Detail	2250
8. Tarnished Gold Detail	0442
9. Seaweed Detail	0232
10. Wild Rice Stems	0862
11. Black Detail	0020



Words of Wisdom

by Tamara Kate / #80133 / 27 Designs

Listings below indicate color sample, stitching order and suggested thread color number. Most numbers indicate Isacord thread. Colors beginning with 20501 refer to YLI Fine Metallics, 7 refer to Yenmet Metallic, 8 refer to YLI Variations Variegated Thread and 9 refer to Isacord Multicolor Variegated.

Isacord / Yenmet Metallic Thread Colors Used in “Words of Wisdom”

By Tamara Kate
Collection #80133

0015 White	0862 Wild Rice	1902 Poinsettia	3963 Hint of Blue
0020 Black	0874 Gravel	1921 Blossom	4174 Charcoal
0232 Seaweed	0904 Spanish Gold	2152 Heather Pink	4230 Aqua
0250 Lemon Frost	1030 Passion Fruit	2155 Pink Tulip	4240 Spearmint
0310 Yellow	1032 Bronze	2160 Iced Pink	4620 Jade
0345 Moss	1102 Pumpkin	2170 Chiffon	5100 Green
0442 Tarnished Gold	1200 Sunset Orange	2250 Petal Pink	5101 Dark Jade
0506 Yellow Bird	1430 Melon	2510 Roseate	5230 Bottle Green
0520 Daffodil	1532 Coral	2550 Soft Pink	5422 Swiss Ivy
0640 Parchment	1600 Spanish Tile	2650 Impatiens	5513 Ming
0700 Bright Yellow	1701 Red Berry	2655 Aura	5633 Lime
0702 Papaya	1704 Candy Apple	3030 Amethyst	5830 Chartreuse
0704 Gold	1730 Persimmon	3900 Cerulean	5833 Limabean
0747 Golden Brown	1753 Strawberries N’ Cream	3901 Tropical Blue	5912 Erin Green
0763 Dark Rattan	1840 Corsage	3910 Crystal Blue	5933 Grasshopper
0800 Golden Rod	1900 Geranium	3962 River Mist	7008 (S11) 10 kt. Gold

Words of Wisdom

Love Wall Hanging

Express yourself by making a piece of art using mixed media techniques. This small wall hanging mixes machine embroidery, papercraft and sewing techniques for a fun whimsical look.

Finished Size: 11" x 15"

Supplies:

- Embroidery machine suitable for stitching designs up to 6" x 7"
- OESD Words of Wisdom Design Collection #80133
- OESD Ultra Clean and Tear stabilizer
- OESD Fuse and Fix
- 505 temporary spray adhesive
- Quilting cotton or batik fabrics:
 - Background: 13" x 17", 2 pieces
 - For embroidery: 10" x 17"
 - For ruffle, 1½" x 24"
 - For button background: 2" x 7¼"
- Batting: 13" x 17"
- 5 covered buttons
- Assorted decorative buttons as desired
- 2mm decorative cord - about 20"
- 2-3 strands of yarn for edge finish - 2 yds each
- Handmade paper - 4" x 14"
- BERNINA Presser Feet
 - ◇ Open Embroidery Foot #20/20C/20D
 - ◇ Bulky Overlock Foot #12/12C
 - ◇ Clear Appliqué Foot #23
 - ◇ Ruffler Attachment #86

Machine Embroidery

1. Mark the fabric to be embroidered with a vertical and horizontal line to mark the center.
2. Layer 2 pieces of tear-away, using 505 temporary spray adhesive between them. Adhere the fabric to be embroidered to the stabilizer with 505 spray.
3. Attach the hoop to the machine; select design #80133-21.



4. Align the center of the design with the marked center on the fabric; stitch the design.
5. When the stitching is complete, remove the hoop from the machine; remove the stabilizer from around the design.
6. Trim the fabric to 6¼" x 7¼", centering the design.



Quilted Background

1. Create background by making a quilt sandwich with two layers of fabric and low-loft batting.
2. Stitch lines of straight, zigzag, and other open stitches, placing them randomly across the fabric.
3. Trim the quilted fabric to 11" x 15".
4. Zigzag the raw edges together along all four sides.

Words of Wisdom

1. Fuse OESD Fuse and Fix to the wrong side of the embroidered fabric.
2. Peel the paper away to reveal the adhesive; position the fabric on the back using the photo on the previous page as a guide and press in place.
3. Place a narrow cord next to the edge of the fabric and stitch along the edges using a blanket stitch. (1)

Covered Buttons

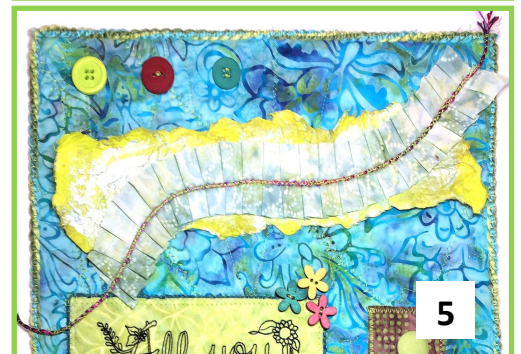
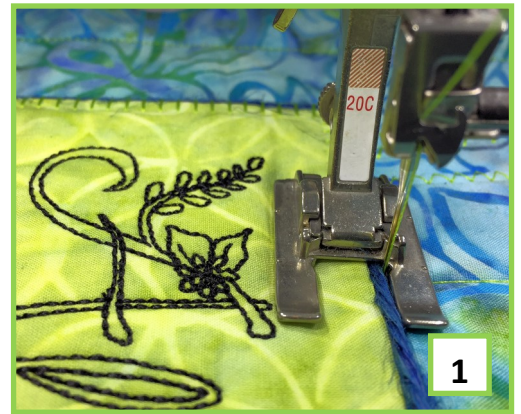
1. Sew (by hand) the five covered buttons down the center of the button background strip, leaving room at the top and bottom for the presser foot when stitching.
2. Place the strip of covered buttons as shown in the photo.
3. Stitch along all four edges using a medium zigzag stitch. (2)

Pleated Ruffle

1. Attach the ruffler to the machine and adjust the setting to 6.
2. Stitch down the center of the fabric strip to pleat it. (3)
3. Couch a 2mm decorative cord down the center of the ruffle, using a zigzag stitch and letting the ends extend beyond the ends of ruffle. (4)
4. The project shown layers the ruffle with a piece of handmade paper that has been torn along the edges to fit the space and then painted to coordinate with the color scheme.
5. Arrange the ruffle as desired on top of the paper. (5)
6. Once the paper and ruffle are placed as desired, attach them to the background by zigzagging over the cord once again.

Finishing

1. Add decorative buttons as desired.
2. Place 1-3 strands of yarn on the edge of the background; attach to all edges using a zigzag stitch while twisting the yarns together. (6)



Beautiful Things Sewing Folder



This useful folder holds all your essential sewing supplies and the cover reminds you of your mission in life—to make beautiful things! Edged with mini piping, the inside of the folder has several places to keep supplies including a zippered pocket for odds and ends. *Finished Size: 7" x 9" with ½" seam allowances*

Supplies

- Embroidery machine suitable for stitching designs up to 6" x 7"
- OESD Words of Wisdom design collection #80133
- OESD TearAway stabilizer
- 505 temporary spray adhesive
- OESD Fuse and Fleece
- Front cover: Natural denim, 12" x 14"
- Back cover: Natural denim, 9½" x 10½"
- Piping: Quilting cotton bias strips - 1½" x 3 yards
- Outer spine: Quilting cotton, 2½" x 10½"
- Inside panel: Quilting cotton, 19" x 10½"
- Inside pockets: Quilting cotton, 19" x 5"
- Inside pocket lining: Quilting cotton, 19" x 5½"
- Inside spine: Quilting cotton, 2" x 10½"
- Zipper binding: 1½" x 7"
- Isacord embroidery thread in colors needed for the design.
- Pin keeper: Felt, 5" x 3"
- 5"-6" of rickrack trim
- Twill tape: ½" x 4"
- 7" zipper
- 2 yards of 2mm cord for mini-piping
- Assorted decorative buttons as desired
- BERNINA Presser Feet
 - ◊ Zipper Foot #4/4D
 - ◊ Open Embroidery Foot #20/20C/20D
 - ◊ Clear Appliqué Foot #23

Machine Embroidery

1. Fuse OESD Fuse and Fleece to the wrong side of the outer fabric pieces.
2. Using a fabric marker, draw a horizontal line and a vertical line to mark the center of the front fabric.
3. Layer 2 pieces of TearAway and place the fused denim fabric on top using temporary spray adhesive between the layers.
4. Hoop all three layers together, aligning the marked center of the fabric with the center of the hoop. Attach the hoop to the embroidery machine.
5. Select design #80133-25.
6. Stitch the selected design on the fabric.
7. When the stitching is complete, remove the hoop from the machine and then remove the excess stabilizer.
8. Trim the front to 8" x 10", centering the design.
1. Round the corners of the front and back covers.

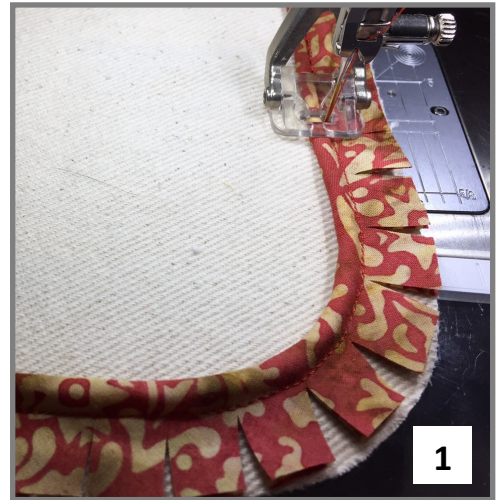


Front Cover

1. Place front and back covers edge to edge at the spine; zigzag together.
2. Fold the long edges of the outer spine fabric under $\frac{1}{2}$ " and press.
3. Center the outer spine over the zigzagged seam; edgestitch.
4. Stitch desired buttons on the front cover.

Mini Piping

1. Attach Clear Appliqué Foot #23 to the machine.
2. Piece the bias strips to make one strip, 2 yards long, The remaining strips will be used for ties.
3. Wrap the bias strip around the 2mm cording and position it under the foot with the cord under the center of the foot.
4. Adjust the needle position to stitch next to, but not into, the cord.
5. Position the covered cord along the outer edges of the cover.
6. Stitch the piping to the cover, clipping the seam allowances of the piping to shape it around the curves. (1)



Inside Panel and Pockets

1. Place the pocket and lining fabrics right side together (lower edges will not match). Stitch along the upper edge using a $\frac{1}{4}$ " seam allowance.
2. Turn to the right side and press, matching the lower raw edges. This forms a faux binding along the upper edge.
3. Place the zipper behind the bound edge on the left-hand side of the pocket panel. Topstitch in place using a zipper foot. (2)
4. Place the pocket on the inside panel with the lower and side edges matching. Baste along the edges.
5. Fold the zipper binding in half and press. Position it on the exposed zipper tape with the fold at the bottom and stitch it to the tape, through the panel.
6. Press the strip up to cover the zipper tape and edgestitch in place. (3)
7. On the right-hand side of the pocket panel, stitch 2-3 vertical lines as desired for pocket separations.
8. Place the inside spine fabric down the center of the panel, covering the end of the zipper. Edgestitch in place.



Pin Keeper/Twill Tape

1. Position the felt on the inside left panel as shown in the photo on the previous page.
2. Place the rickrack trim along the upper edge of the felt and stitch it in place, securing the felt in the process. (4)
3. Position the twill tape on the inside right panel as shown in the photo.
4. Stitch a button on each end of the tape to hold it in place. (5)



Finishing

1. Cut 2 bias strip pieces, about 9"-10" each. Fold the edges in to meet in the middle and then fold again; press.
2. Position one tie at the center front and back with the raw edges even with the edges of the cover.
3. Place the cover and the inside panel right sides together. Adjust the needle one step closer to the cord.
4. Stitch around the edges of the cover, leaving a 4" opening along the lower edge for turning.
5. Clip notches into the curved corners; turn the cover to the right side.
6. Topstitch on the cover next to the piping, closing the opening in the process. (6)

