



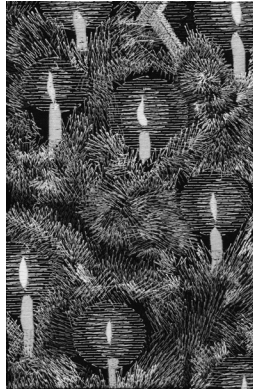
Santa's Workshop Tiling Scene

by Dona Gelsinger / #80146 / 32 Files

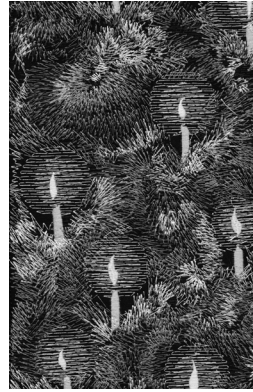
Note: Some designs in this collection may have been created using unique special stitches and/or techniques. To preserve design integrity when rescaling or rotating designs in your software, always rescale or rotate designs using the handles directly on-screen.



80146-01 Tile 1
4.62 X 6.89 in.
117.35 X 175.01 mm
22,369 St.



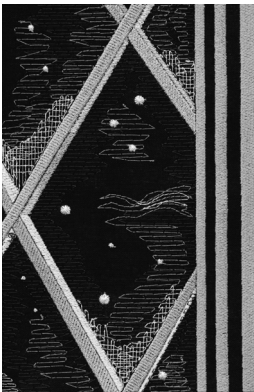
80146-02 Tile 2
4.61 X 6.96 in.
117.09 X 176.78 mm
21,331 St.



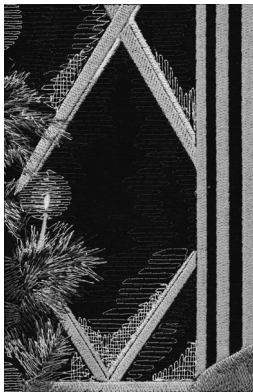
80146-03 Tile 3
4.51 X 6.87 in.
114.55 X 174.50 mm
20,417 St.



80146-04 Tile 4
4.55 X 6.86 in.
115.57 X 174.24 mm
19,864 St.



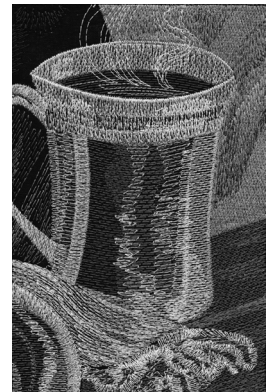
80146-05 Tile 5
4.52 X 6.88 in.
114.81 X 174.75 mm
23,359 St.



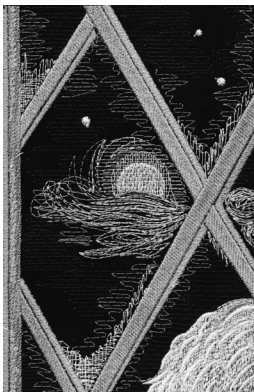
80146-06 Tile 6
4.65 X 6.89 in.
118.11 X 175.01 mm
24,729 St.



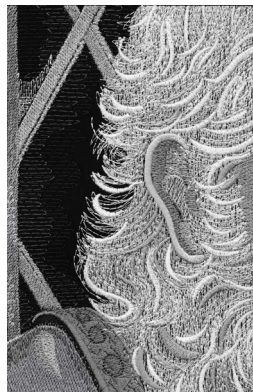
80146-07 Tile 7
4.60 X 6.90 in.
116.84 X 175.26 mm
35,582 St.



80146-08 Tile 8
4.50 X 6.89 in.
114.30 X 175.01 mm
25,584 St.



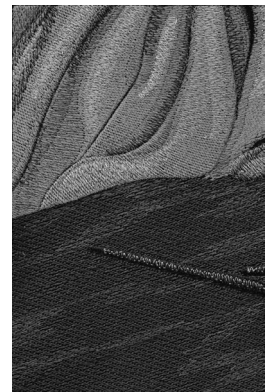
80146-09 Tile 9
4.52 X 6.89 in.
114.81 X 175.01 mm
24,571 St.



80146-10 Tile 10
4.50 X 6.93 in.
114.30 X 176.02 mm
38,146 St.



80146-11 Tile 11
4.53 X 6.90 in.
115.06 X 175.26 mm
51,133 St.



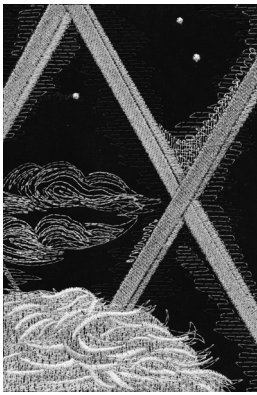
80146-12 Tile 12
4.51 X 6.83 in.
114.55 X 173.48 mm
32,659 St.



Santa's Workshop Tiling Scene

by Dona Gelsinger / #80146 / 32 Files

Note: Some designs in this collection may have been created using unique special stitches and/or techniques. To preserve design integrity when rescaling or rotating designs in your software, always rescale or rotate designs using the handles directly on-screen.



80146-13 Tile 13
4.60 X 6.90 in.
116.84 X 175.26 mm
21,393 St.



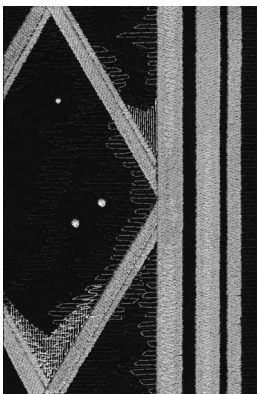
80146-14 Tile 14
4.60 X 6.89 in.
116.84 X 175.01 mm
47,905 St.



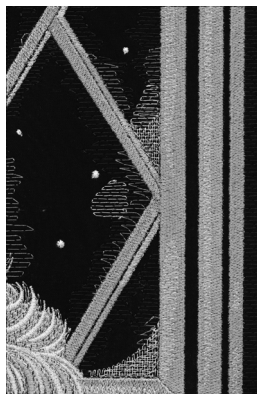
80146-15 Tile 15
4.53 X 6.86 in.
115.06 X 174.24 mm
41,458 St.



80146-16 Tile 16
4.49 X 6.81 in.
114.05 X 172.97 mm
31,277 St.



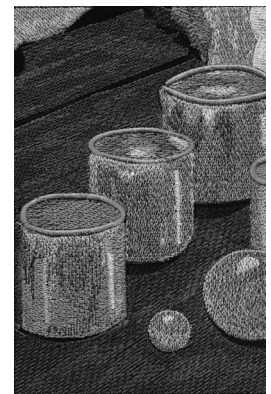
80146-17 Tile 17
4.58 X 6.85 in.
116.33 X 173.99 mm
21,945 St.



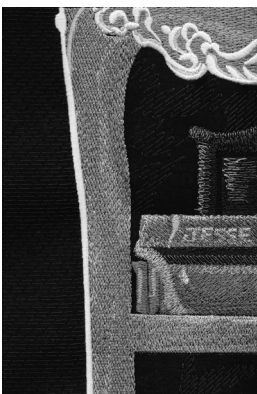
80146-18 Tile 18
4.49 X 6.77 in.
114.05 X 171.96 mm
24,152 St.



80146-19 Tile 19
4.77 X 6.92 in.
121.16 X 175.77 mm
48,769 St.



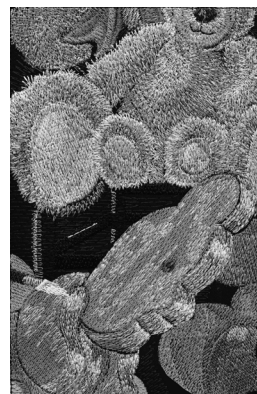
80146-20 Tile 20
4.57 X 6.80 in.
116.08 X 172.72 mm
30,760 St.



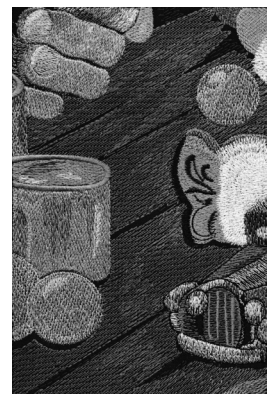
80146-21 Tile 21
4.47 X 6.81 in.
113.54 X 172.97 mm
24,329 St.



80146-22 Tile 22
4.57 X 6.88 in.
116.08 X 174.75 mm
30,505 St.



80146-23 Tile 23
4.48 X 6.85 in.
113.79 X 173.99 mm
39,595 St.



80146-24 Tile 24
4.53 X 7.00 in.
115.06 X 177.80 mm
31,536 St.



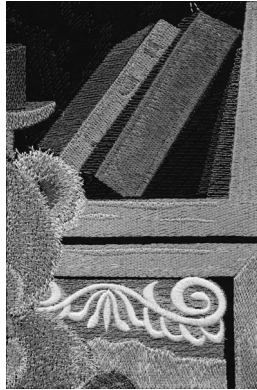
Santa's Workshop Tiling Scene

by Dona Gelsinger / #80146 / 32 Files

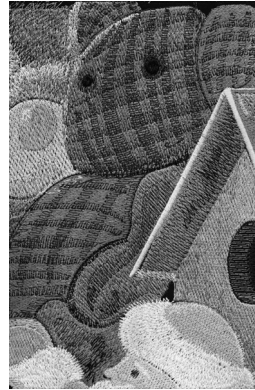
Note: Some designs in this collection may have been created using unique special stitches and/or techniques. To preserve design integrity when rescaling or rotating designs in your software, always rescale or rotate designs using the handles directly on-screen.



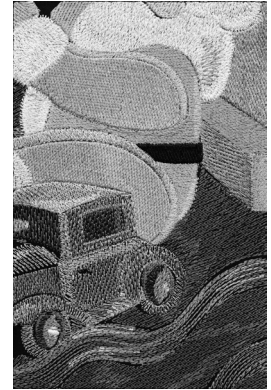
80146-25 Tile 25
4.48 X 6.83 in.
113.79 X 173.48 mm
34,055 St.



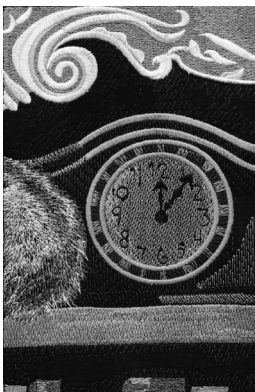
80146-26 Tile 26
4.52 X 6.88 in.
114.81 X 174.75 mm
32,370 St.



80146-27 Tile 27
4.47 X 6.89 in.
113.54 X 175.01 mm
51,790 St.



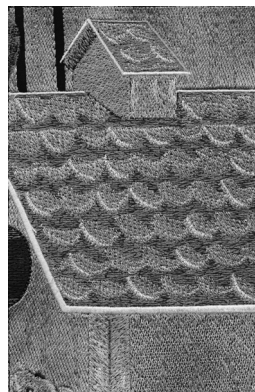
80146-28 Tile 28
4.51 X 6.80 in.
114.55 X 172.72 mm
34,325 St.



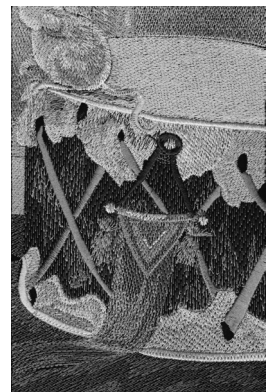
80146-29 Tile 29
4.56 X 6.88 in.
115.82 X 174.75 mm
33,808 St.



80146-30 Tile 30
4.50 X 6.84 in.
114.30 X 173.74 mm
34,084 St.



80146-31 Tile 31
4.59 X 6.84 in.
116.59 X 173.74 mm
46,527 St.



80146-32 Tile 32
4.53 X 6.91 in.
115.06 X 175.51 mm
36,641 St.



Santa's Workshop Tiling Scene

by Dona Gelsinger / #80146 / 32 Designs

Listings below indicate color sample, stitching order and suggested thread color number. Most numbers indicate Isacord thread. Colors beginning with 20501 refer to YLI Fine Metallics, 7 refer to Yenmet Metallic, 8 refer to YLI Variations Variegated Thread and 9 refer to Isacord Multicolor Variegated.

80146-01 Tile 1

1. Silvery Grey Detail	1972
2. Glacier Green Detail	4071
3. Charcoal Detail	4174
4. Heavy Storm Detail	0138
5. Smoke Detail	0131
6. Battleship Gray Detail	3274
7. Oyster Detail	3770
8. Seam	0020

80146-02 Tile 2

1. Silvery Grey Detail	1972
2. Glacier Green Detail	4071
3. Charcoal Detail	4174
4. Heavy Storm Detail	0138
5. Smoke Detail	0131
6. Battleship Gray Detail	3274
7. Oyster Detail	3770
8. Seam	0020

80146-03 Tile 3

1. Charcoal Detail	4174
2. Heavy Storm Detail	0138
3. Smoke Detail	0131
4. Battleship Gray Detail	3274
5. Oyster Detail	3770
6. Seam	0020

80146-04 Tile 4

1. Charcoal Detail	4174
2. Black Detail	0020
3. Heavy Storm Detail	0138
4. Battleship Gray Detail	3274
5. Metal Detail	4073
6. Smoke Detail	0131
7. Glacier Green Detail	4071
8. Charcoal Detail	4174
9. Seam	0020

80146-05 Tile 5

1. Silvery Grey Detail	1972
2. Glacier Green Detail	4071
3. Charcoal Detail	4174
4. Battleship Gray Detail	3274
5. Oyster Detail	3770
6. Smoke Detail	0131
7. Seam	0020

80146-06 Tile 6

1. Silvery Grey Detail	1972
2. Glacier Green Detail	4071
3. Charcoal Detail	4174
4. Heavy Storm Detail	0138
5. Smoke Detail	0131
6. Battleship Gray Detail	3274
7. Oyster Detail	3770
8. Smoke Detail	0131
9. Slate Gray Detail	3265
10. Seam	0020

80146-07 Tile 7

1. Silvery Grey Detail	1972
2. Charcoal Detail	4174
3. Heavy Storm Detail	0138
4. Smoke Detail	0131
5. Battleship Gray Detail	3274
6. Smoke Detail	0131
7. Slate Gray Detail	3265
8. Charcoal Detail	4174
9. Oyster Detail	3770
10. Seam	0020

80146-08 Tile 8

1. Charcoal Detail	4174
2. Battleship Gray Detail	3274
3. Black Detail	0020
4. Slate Gray Detail	3265
5. Metal Detail	4073
6. Heavy Storm Detail	0138
7. Smoke Detail	0131
8. Charcoal Detail	4174
9. Oyster Detail	3770
10. Seam	0020

80146-09 Tile 9

1. Charcoal Detail	4174
2. Silvery Grey Detail	1972
3. Glacier Green Detail	4071
4. Ash Mist Detail	0105
5. Metal Detail	4073
6. Battleship Gray Detail	3274
7. Smoke Detail	0131
8. Oyster Detail	3770
9. Eggshell Detail	0101
10. Seam	0020

80146-10 Tile 10

1. Charcoal Detail	4174
2. Silvery Grey Detail	1972
3. Glacier Green Detail	4071
4. Battleship Gray Detail	3274
5. Slate Gray Detail	3265
6. Ash Mist Detail	0105
7. Metal Detail	4073
8. Slate Gray Detail	3265
9. Smoke Detail	0131
10. Glacier Green Detail	4071
11. Eggshell Detail	0101
12. Seam	0020

80146-11 Tile 11

1. Battleship Gray Detail	3274
2. Slate Gray Detail	3265
3. Smoke Detail	0131
4. Charcoal Detail	4174
5. Ash Mist Detail	0105
6. Metal Detail	4073
7. Smoke Detail	0131
8. Oyster Detail	3770
9. Eggshell Detail	0101
10. Seam	0020

80146-12 Tile 12

1. Heavy Storm Detail	0138
2. Battleship Gray Detail	3274
3. Slate Gray Detail	3265
4. Smoke Detail	0131
5. Charcoal Detail	4174
6. Silvery Grey Detail	1972
7. Seam	0020

80146-13 Tile 13

1. Charcoal Detail	4174
2. Silvery Grey Detail	1972
3. Glacier Green Detail	4071
4. Battleship Gray Detail	3274
5. Ash Mist Detail	0105
6. Metal Detail	4073
7. Smoke Detail	0131
8. Oyster Detail	3770
9. Eggshell Detail	0101
10. Seam	0020

80146-14 Tile 14

1. Charcoal Detail	4174
2. Silvery Grey Detail	1972
3. Glacier Green Detail	4071
4. Battleship Gray Detail	3274
5. Ash Mist Detail	0105
6. Metal Detail	4073
7. Heavy Storm Detail	0138
8. Smoke Detail	0131
9. Oyster Detail	3770
10. Eggshell Detail	0101
11. Pearlescence White Detail	7003
12. Charcoal Detail	4174
13. Seam	0020

80146-15 Tile 15

1. Battleship Gray Detail	3274
2. Slate Gray Detail	3265
3. Charcoal Detail	4174
4. Ash Mist Detail	0105
5. Metal Detail	4073
6. Smoke Detail	0131
7. Oyster Detail	3770
8. Eggshell Detail	0101
9. Charcoal Detail	4174
10. Seam	0020

80146-16 Tile 16

1. Heavy Storm Detail	0138
2. Metal Detail	4073
3. Battleship Gray Detail	3274
4. Slate Gray Detail	3265
5. Smoke Detail	0131
6. Oyster Detail	3770
7. Charcoal Detail	4174
8. Silvery Grey Detail	1972
9. Seam	0020



Santa's Workshop Tiling Scene

by Dona Gelsinger / #80146 / 32 Designs

Listings below indicate color sample, stitching order and suggested thread color number. Most numbers indicate Isacord thread. Colors beginning with 20501 refer to YLI Fine Metallics, 7 refer to Yenmet Metallic, 8 refer to YLI Variations Variegated Thread and 9 refer to Isacord Multicolor Variegated.

80146-17 Tile 17

■ 1. Charcoal Detail.....	4174
■ 2. Battleship Gray Detail.....	3274
■ 3. Silvery Grey Detail.....	1972
■ 4. Glacier Green Detail.....	4071
■ 5. Oyster Detail.....	3770
■ 6. Seam.....	0020

80146-18 Tile 18

■ 1. Charcoal Detail.....	4174
■ 2. Battleship Gray Detail.....	3274
■ 3. Silvery Grey Detail.....	1972
■ 4. Glacier Green Detail.....	4071
■ 5. Ash Mist Detail.....	0105
■ 6. Metal Detail.....	4073
■ 7. Smoke Detail.....	0131
■ 8. Oyster Detail.....	3770
□ 9. Eggshell Detail.....	0101
■ 10. Seam.....	0020

80146-19 Tile 19

■ 1. Charcoal Detail.....	4174
■ 2. Silvery Grey Detail.....	1972
■ 3. Glacier Green Detail.....	4071
■ 4. Battleship Gray Detail.....	3274
■ 5. Slate Gray Detail.....	3265
■ 6. Ash Mist Detail.....	0105
■ 7. Charcoal Detail.....	4174
■ 8. Metal Detail.....	4073
■ 9. Smoke Detail.....	0131
■ 10. Oyster Detail.....	3770
□ 11. Eggshell Detail.....	0101
■ 12. Heavy Storm Detail.....	0138
■ 13. Dolphin Detail.....	0152
■ 14. Mystik Grey Detail.....	0150
■ 15. Glacier Green Detail.....	4071
■ 16. Seam.....	0020

80146-20 Tile 20

■ 1. Metal Detail.....	4073
■ 2. Heavy Storm Detail.....	0138
■ 3. Dolphin Detail.....	0152
■ 4. Mystik Grey Detail.....	0150
■ 5. Steel Detail.....	2674
■ 6. Charcoal Detail.....	4174
■ 7. Smoke Detail.....	0131
■ 8. Heavy Storm Detail.....	0138
■ 9. Battleship Gray Detail.....	3274
□ 10. Eggshell Detail.....	0101
■ 11. Slate Gray Detail.....	3265
■ 12. Charcoal Detail.....	4174
■ 13. Seam.....	0020

80146-21 Tile 21

■ 1. Charcoal Detail.....	4174
■ 2. Metal Detail.....	4073
■ 3. Titanium Detail.....	2564
■ 4. Smoke Detail.....	0131
■ 5. Slate Gray Detail.....	3265
■ 6. Oyster Detail.....	3770
■ 7. Seam.....	0020

80146-22 Tile 22

■ 1. Charcoal Detail.....	4174
■ 2. Slate Gray Detail.....	3265
■ 3. Metal Detail.....	4073
■ 4. Battleship Gray Detail.....	3274
■ 5. Smoke Detail.....	0131
■ 6. Oyster Detail.....	3770
■ 7. Ash Mist Detail.....	0105
■ 8. Whale Detail.....	0111
■ 9. Titanium Detail.....	2564
■ 10. Cobblestone Detail.....	0108
■ 11. Charcoal Detail.....	4174
■ 12. Black Detail.....	0020
■ 13. Glacier Green Detail.....	4071
■ 14. Seam.....	0020

80146-23 Tile 23

■ 1. Charcoal Detail.....	4174
■ 2. Black Detail.....	0020
■ 3. Ash Mist Detail.....	0105
■ 4. Whale Detail.....	0111
■ 5. Titanium Detail.....	2564
■ 6. Cobblestone Detail.....	0108
■ 7. Battleship Gray Detail.....	3274
■ 8. Charcoal Detail.....	4174
■ 9. Dolphin Detail.....	0152
■ 10. Mystik Grey Detail.....	0150
■ 11. Glacier Green Detail.....	4071
■ 12. Metal Detail.....	4073
■ 13. Charcoal Detail.....	4174
■ 14. Silvery Grey Detail.....	1972
■ 15. Oyster Detail.....	3770
■ 16. Black.....	0020

80146-24 Tile 24

■ 1. Heavy Storm Detail.....	0138
■ 2. Metal Detail.....	4073
■ 3. Steel Detail.....	2674
■ 4. Charcoal Detail.....	4174
■ 5. Smoke Detail.....	0131
■ 6. Dolphin Detail.....	0152
■ 7. Mystik Grey Detail.....	0150
■ 8. Heavy Storm Detail.....	0138
■ 9. Titanium Detail.....	2564
■ 10. Battleship Gray Detail.....	3274
■ 11. Silvery Grey Detail.....	1972
■ 12. Oyster Detail.....	3770
□ 13. Eggshell Detail.....	0101
■ 14. Black Detail.....	0020
■ 15. Seam.....	0020

80146-25 Tile 25

■ 1. Charcoal Detail.....	4174
■ 2. Metal Detail.....	4073
■ 3. Titanium Detail.....	2564
■ 4. Cobblestone Detail.....	0108
■ 5. Smoke Detail.....	0131
■ 6. Slate Gray Detail.....	3265
■ 7. Oyster Detail.....	3770
■ 8. Black Detail.....	0020
■ 9. Seam.....	0020

80146-26 Tile 26

■ 1. Charcoal Detail.....	4174
■ 2. Titanium Detail.....	2564
■ 3. Cobblestone Detail.....	0108
■ 4. Metal Detail.....	4073
■ 5. Slate Gray Detail.....	3265
■ 6. Smoke Detail.....	0131
■ 7. Oyster Detail.....	3770
■ 8. Ash Mist Detail.....	0105
■ 9. Whale Detail.....	0111
■ 10. Titanium Detail.....	2564
■ 11. Cobblestone Detail.....	0108
■ 12. Glacier Green Detail.....	4071
■ 13. Charcoal Detail.....	4174
■ 14. Seam.....	0020

80146-27 Tile 27

■ 1. Metal Detail.....	4073
■ 2. Ash Mist Detail.....	0105
■ 3. Whale Detail.....	0111
■ 4. Titanium Detail.....	2564
■ 5. Cobblestone Detail.....	0108
■ 6. Glacier Green Detail.....	4071
■ 7. Battleship Gray Detail.....	3274
■ 8. Charcoal Detail.....	4174
■ 9. Silvery Grey Detail.....	1972
■ 10. Oyster Detail.....	3770
□ 11. Eggshell Detail.....	0101
■ 12. Black Detail.....	0020
■ 13. Seam.....	0020

80146-28 Tile 28

■ 1. Heavy Storm Detail.....	0138
■ 2. Metal Detail.....	4073
■ 3. Ash Mist Detail.....	0105
■ 4. Silvery Grey Detail.....	1972
■ 5. Smoke Detail.....	0131
■ 6. Oyster Detail.....	3770
■ 7. Battleship Gray Detail.....	3274
□ 8. Eggshell Detail.....	0101
■ 9. Black Detail.....	0020
■ 10. Seam.....	0020

80146-29 Tile 29

■ 1. Charcoal Detail.....	4174
■ 2. Metal Detail.....	4073
■ 3. Titanium Detail.....	2564
■ 4. Cobblestone Detail.....	0108
■ 5. Smoke Detail.....	0131
■ 6. Slate Gray Detail.....	3265
■ 7. Oyster Detail.....	3770
■ 8. Black Detail.....	0020
■ 9. Seam.....	0020

80146-30 Tile 30

■ 1. Charcoal Detail.....	4174
■ 2. Metal Detail.....	4073
■ 3. Titanium Detail.....	2564
■ 4. Cobblestone Detail.....	0108
■ 5. Smoke Detail.....	0131
■ 6. Slate Gray Detail.....	3265
■ 7. Oyster Detail.....	3770
■ 8. Seam.....	0020



Santa's Workshop Tiling Scene

by Dona Gelsinger / #80146 / 32 Designs

Listings below indicate color sample, stitching order and suggested thread color number. Most numbers indicate Isacord thread. Colors beginning with 20501 refer to YLI Fine Metallics, 7 refer to Yenmet Metallic, 8 refer to YLI Variations Variegated Thread and 9 refer to Isacord Multicolor Variegated.

80146-31 Tile 31

■ 1. Metal Detail	4073
■ 2. Titanium Detail	2564
■ 3. Smoke Detail	0131
■ 4. Battleship Gray Detail	3274
■ 5. Charcoal Detail.....	4174
■ 6. Silvery Grey Detail	1972
■ 7. Oyster Detail	3770
■ 8. Seam	0020

80146-32 Tile 32

■ 1. Heavy Storm Detail	0138
■ 2. Metal Detail	4073
■ 3. Ash Mist Detail	0105
■ 4. Smoke Detail	0131
■ 5. Battleship Gray Detail	3274
■ 6. Cobblestone Detail.....	0108
■ 7. Charcoal Detail.....	4174
■ 8. Oyster Detail	3770
■ 9. Seam	0020

Isacord Thread Colors Used in "Santa's Workshop Tiling Scene"

By Dona Gelsinger

Collection #80146

0020 Black	0150 Mystik Grey	3770 Oyster
0101 Eggshell	0152 Dolphin	4071 Glacier Green
0105 Ash Mist	1972 Silvery Grey	4073 Metal
0108 Cobblestone	2564 Titanium	4174 Charcoal
0111 Whale	2674 Steel	7003 (AN1) Pearlescence
0131 Smoke	3265 Slate Gray	White
0138 Heavy Storm	3274 Battleship Gray	



Santa's Workshop Tiling Scene

Instructions

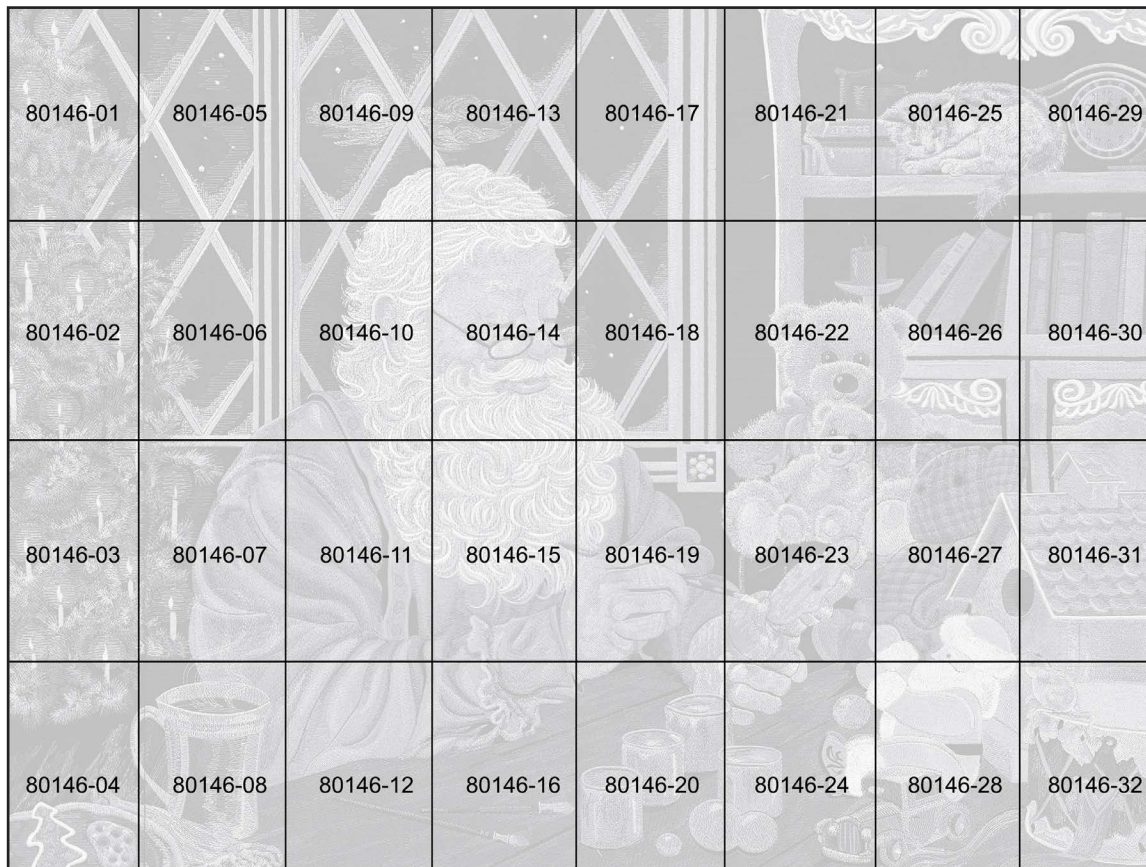
Finished size: 34 1/2" x 26 1/2"

Supplies

- OESD embroidery collection Santa's Workshop by Donna Gelsinger #80146
- Isacord embroidery thread
- OESD bobbin thread (black is recommended)
- Temporary spray adhesive
- 2 rolls Heavy Weight TearAway Stabilizer 15"*
- 1 roll Ultra Clean and Tear Stabilizer 15"*
- 3 1/3 yard solid black fabric for tiles*
- Batting 32" x 40"
- 1 yard backing
- 1/3 yard for binding, cut to (4) width of fabric x 2 1/2" strips and pieced end to end

*These yardages assume that stabilizer and fabrics will be cut 10" x 15" for hooping. More or less fabric or stabilizer may be needed depending on the size hoop used or if more than one tile is stitched per hooping.

Diagram



Embroidery

- Embroider one of each design file 80146-01 through 80146-32. For each hooping:
 - Cut the following 10" x 15", or large enough to hoop:
 - 1 piece of Ultra Clean and Tear
 - 2 pieces of HeavyWeight TearAway
 - 1 piece of black fabric
- Layer these with the Ultra Clean and Tear on the bottom, Heavy Weight in the middle, and black fabric on top. Baste all layers together with temporary adhesive spray.
- The last color change in each block is called "Seam". This stitch is very important in the process of assembling the wall hanging. Stitch the top color using a thread that blends with the fabric. For the bobbin, use red or another easily visible color. You will use this line as a guide when trimming the blocks.
- After embroidery is complete, trim away excess fabric and stabilizer by trimming 1/2" away from the "Seam." Trim from the backside so you can easily see the seam line. **(Photo 01 and Photo 02)**

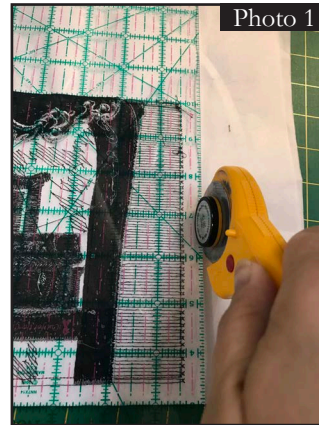


Photo 1



Photo 2



Photo 3

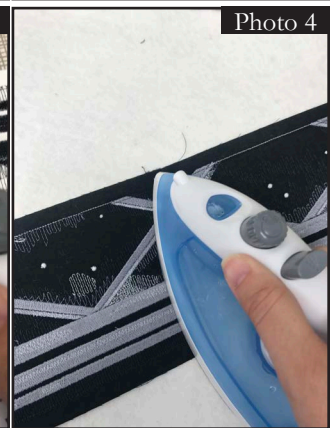


Photo 4

Construction of the Blocks

- The quilt will be assembled in columns, and then these columns will be stitched together to form the quilt.
- Use a 1/2" seam for all blocks, and press all seams open. This will help the quilt to lay flatter when complete. After pressing each seam open, flip it right side up onto a Perfect Embroidery Press Cloth. Press with steam to set the seam. **(Photo 03 and 04)**
- Place block 80146-01 right sides together with block 80146-02. Stitch together along the bottom edge of 80146-01 and top edge of 80146-02. Use a seam guide to help you keep a consistent 1/2" seam, and stitch each seam a hair to the inside of each seam line. **(Photo 05)**
- Stitch the remaining blocks to form column 1.
- Repeat this process for each of the 8 columns. **(Photo 06)**
- Stitch the columns together to form the quilt top. **(Photo 07)**

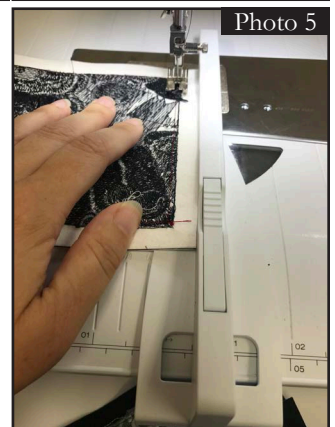


Photo 5

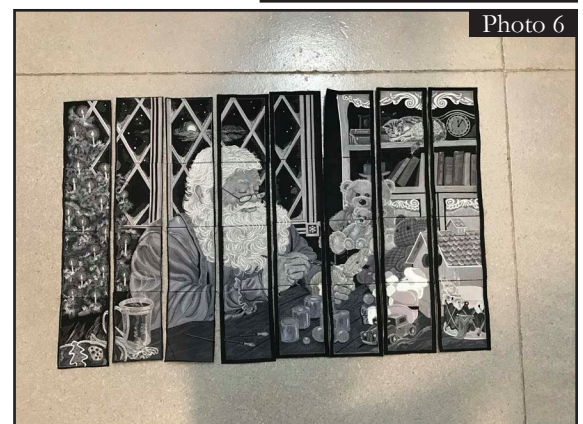


Photo 6



Santa's Workshop Tiling Scene

Instructions

- Square up the quilt top, trimming away the outer border to 1/4" from the outer seam line all the way around the quilt. **(Photo 08)**
- Layer the backing, batting and quilt top together. Baste all layers with temporary adhesive spray. **(Photo 09)**
- Stitch in the ditch to quilt the layers together. Use a dark gray thread so it blends with the quilt top. **(Photo 10)**
- Square the batting and backing to the quilt top. **(Photo 11)**
- Zig-Zag over the edge of the quilt to seal edges together **(Photo 12)**
- Stitch on binding as desired.

