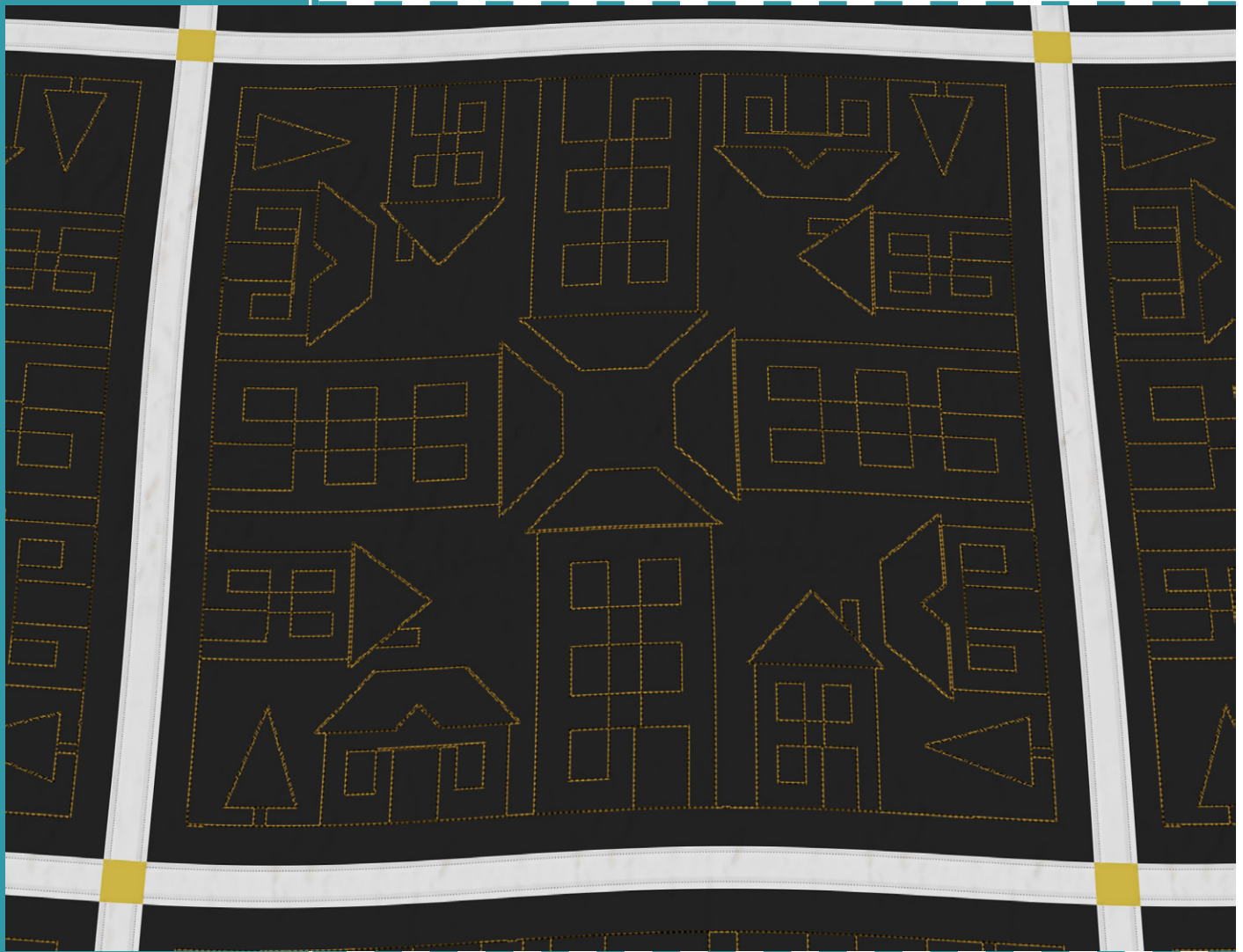


#80233



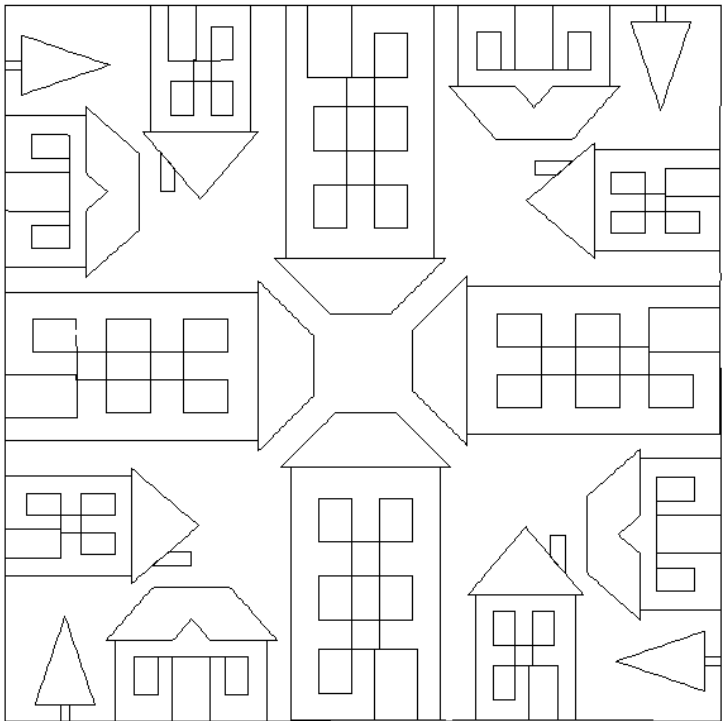
6

DESIGNS

Houses Quilting

by Amanda Murphy

Note: Some designs in this collection may have been created using unique special stitches and/or techniques. To preserve design integrity when rescaling or rotating designs in your software, always rescale or rotate designs using the handles directly on-screen.



80233-01 Houses Block

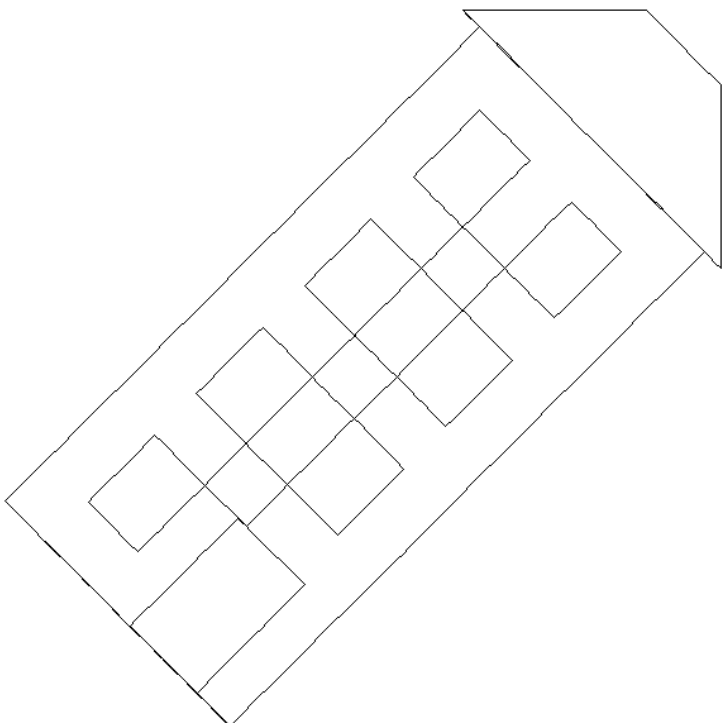
Size Inches: Size mm:
8.00 X 8.00 in. 203.20 X 203.20 mm

- 1. Single Color Design..... 0020

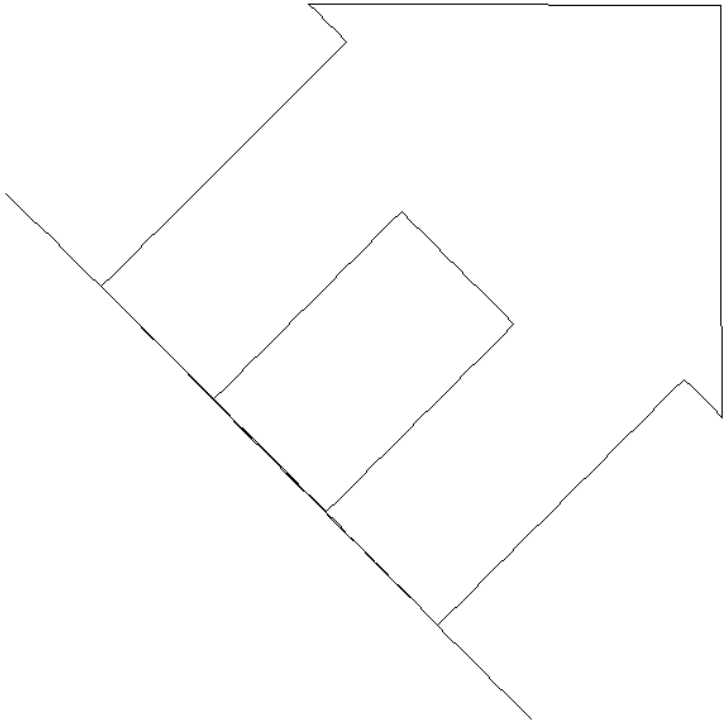
80233-02 Houses Corner 1

Size Inches: Size mm:
3.96 X 3.96 in. 100.58 X 100.58 mm

- 1. Single Color Design..... 0020



Note: Some designs in this collection may have been created using unique special stitches and/or techniques. To preserve design integrity when rescaling or rotating designs in your software, always rescale or rotate designs using the handles directly on-screen.



80233-03 Houses Corner 2

Size Inches: Size mm:
3.37 X 3.37 in. 85.60 X 85.60 mm

- 1. Single Color Design..... 0020

80233-04 Houses Straight Border 1

Size Inches: Size mm:
3.72 X 14.00 in. 94.49 X 355.60 mm

- 1. Single Color Design..... 0020

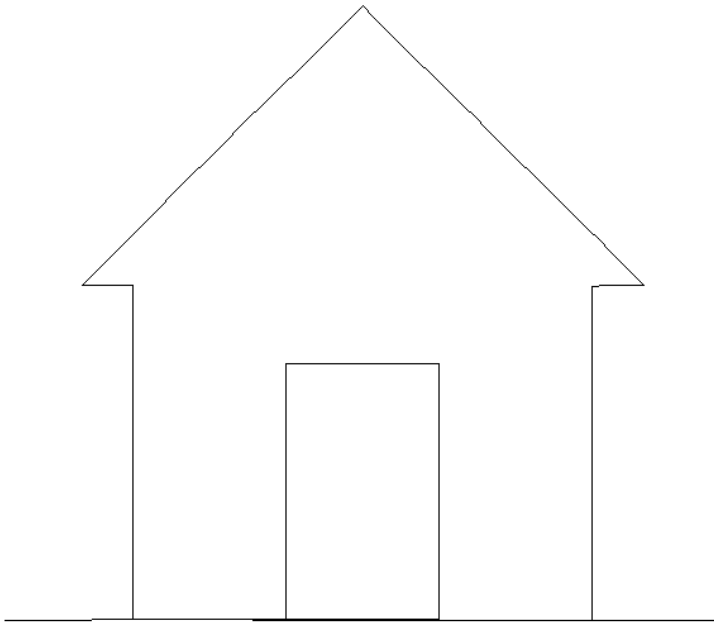


Note: Some designs in this collection may have been created using unique special stitches and/or techniques. To preserve design integrity when rescaling or rotating designs in your software, always rescale or rotate designs using the handles directly on-screen.

80233-05 Houses Straight Border 2

Size Inches: Size mm:
3.50 X 3.01 in. 88.90 X 76.45 mm

- 1. Single Color Design..... 0020



80233-06 Houses Triangle

Size Inches: Size mm:
4.01 X 12.00 in. 101.85 X 304.80 mm

- 1. Single Color Design..... 0020

