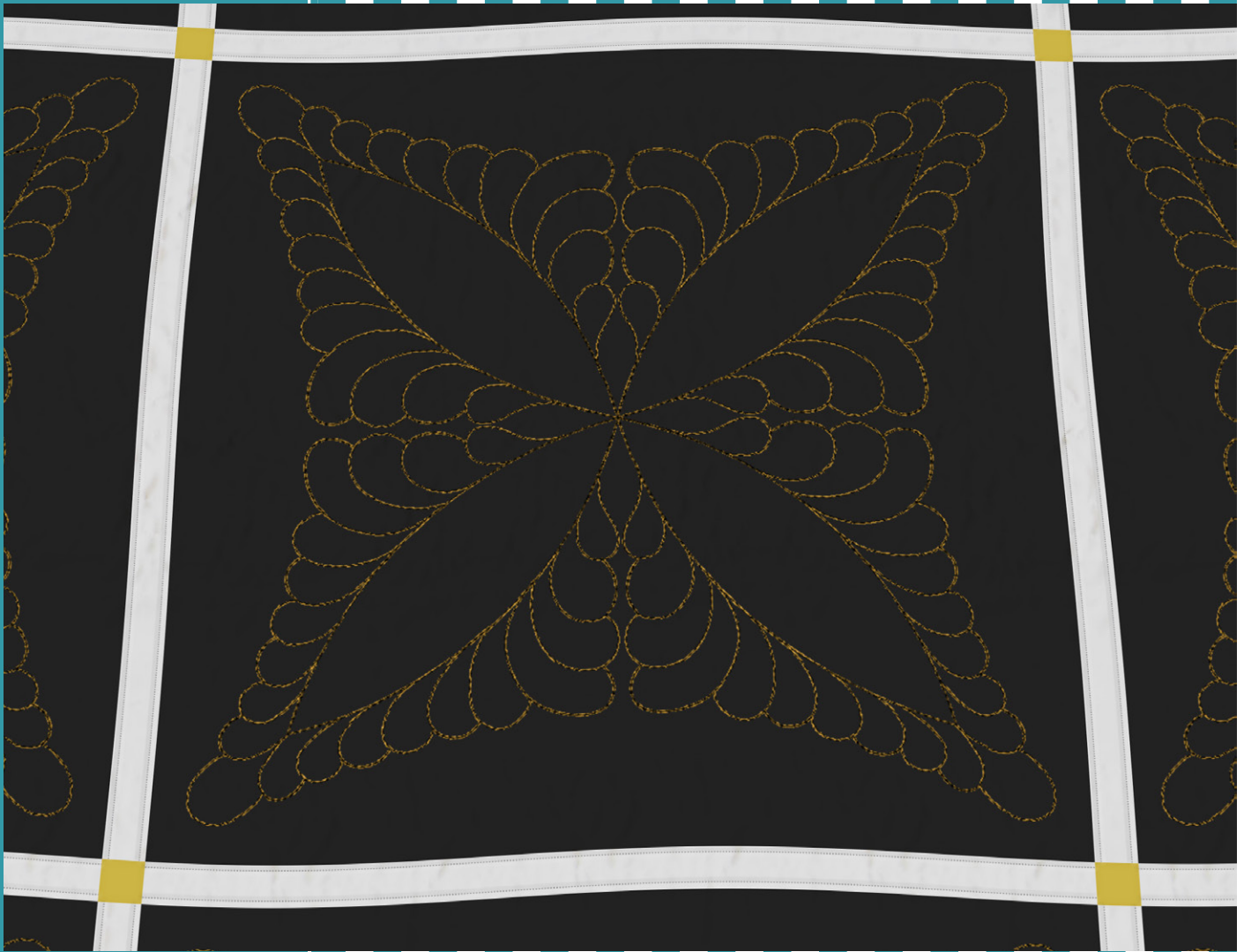


#80239



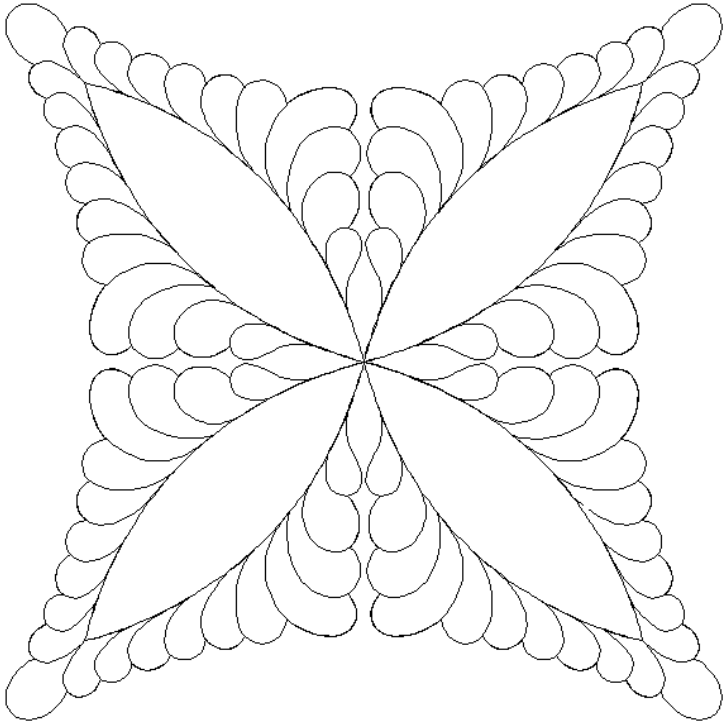
6

DESIGNS

Double Wedding Ring Quilting

by Amanda Murphy

Note: Some designs in this collection may have been created using unique special stitches and/or techniques. To preserve design integrity when rescaling or rotating designs in your software, always rescale or rotate designs using the handles directly on-screen.



80239-01 Double Wedding Ring Motif 1

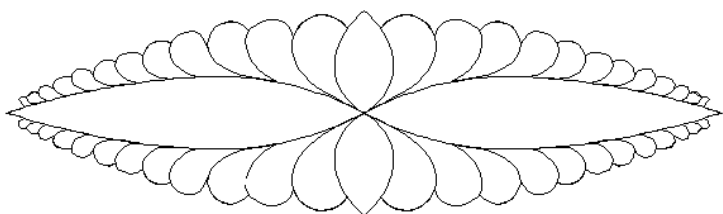
Size Inches: Size mm:
8.00 X 8.00 in. 203.20 X 203.20 mm

- 1. Single Color Design..... 0020

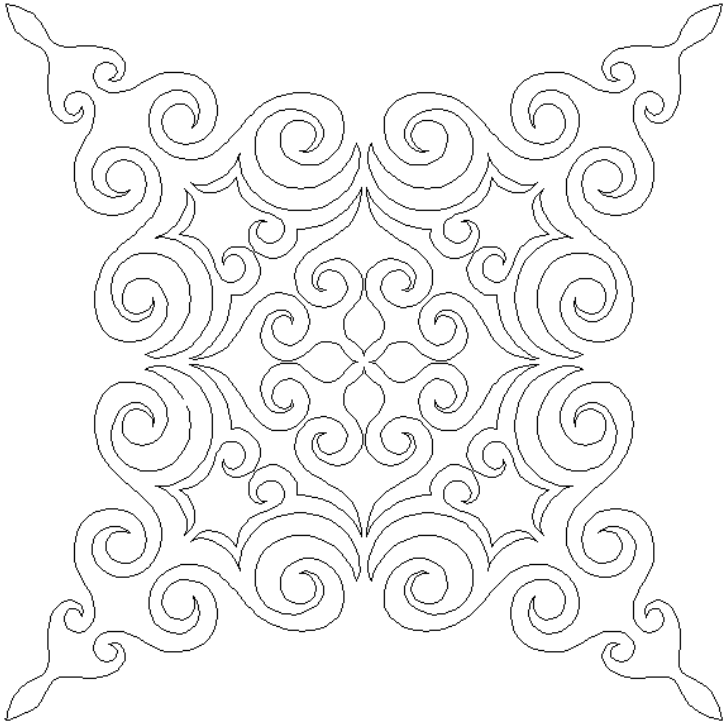
80239-02 Double Wedding Ring Motif 2

Size Inches: Size mm:
7.34 X 2.10 in. 186.44 X 53.34 mm

- 1. Single Color Design..... 0020



Note: Some designs in this collection may have been created using unique special stitches and/or techniques. To preserve design integrity when rescaling or rotating designs in your software, always rescale or rotate designs using the handles directly on-screen.



80239-03 Double Wedding Ring Motif 3

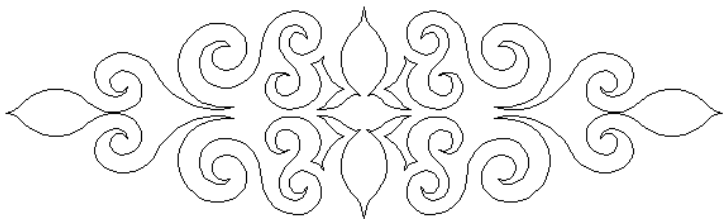
Size Inches: Size mm:
8.00 X 8.00 in. 203.20 X 203.20 mm

- 1. Single Color Design..... 0020

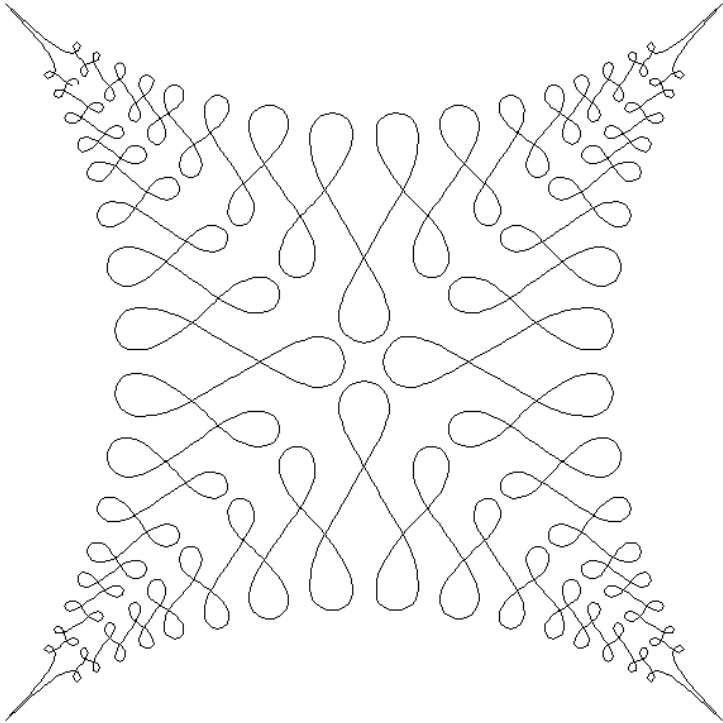
80239-04 Double Wedding Ring Motif 4

Size Inches: Size mm:
7.24 X 2.15 in. 183.90 X 54.61 mm

- 1. Single Color Design..... 0020



Note: Some designs in this collection may have been created using unique special stitches and/or techniques. To preserve design integrity when rescaling or rotating designs in your software, always rescale or rotate designs using the handles directly on-screen.



80239-05 Double Wedding Ring Motif 5

Size Inches: Size mm:
8.00 X 8.00 in. 203.20 X 203.20 mm

- 1. Single Color Design..... 0020

80239-06 Double Wedding Ring Motif 6

Size Inches: Size mm:
7.75 X 2.07 in. 196.85 X 52.58 mm

- 1. Single Color Design..... 0020

