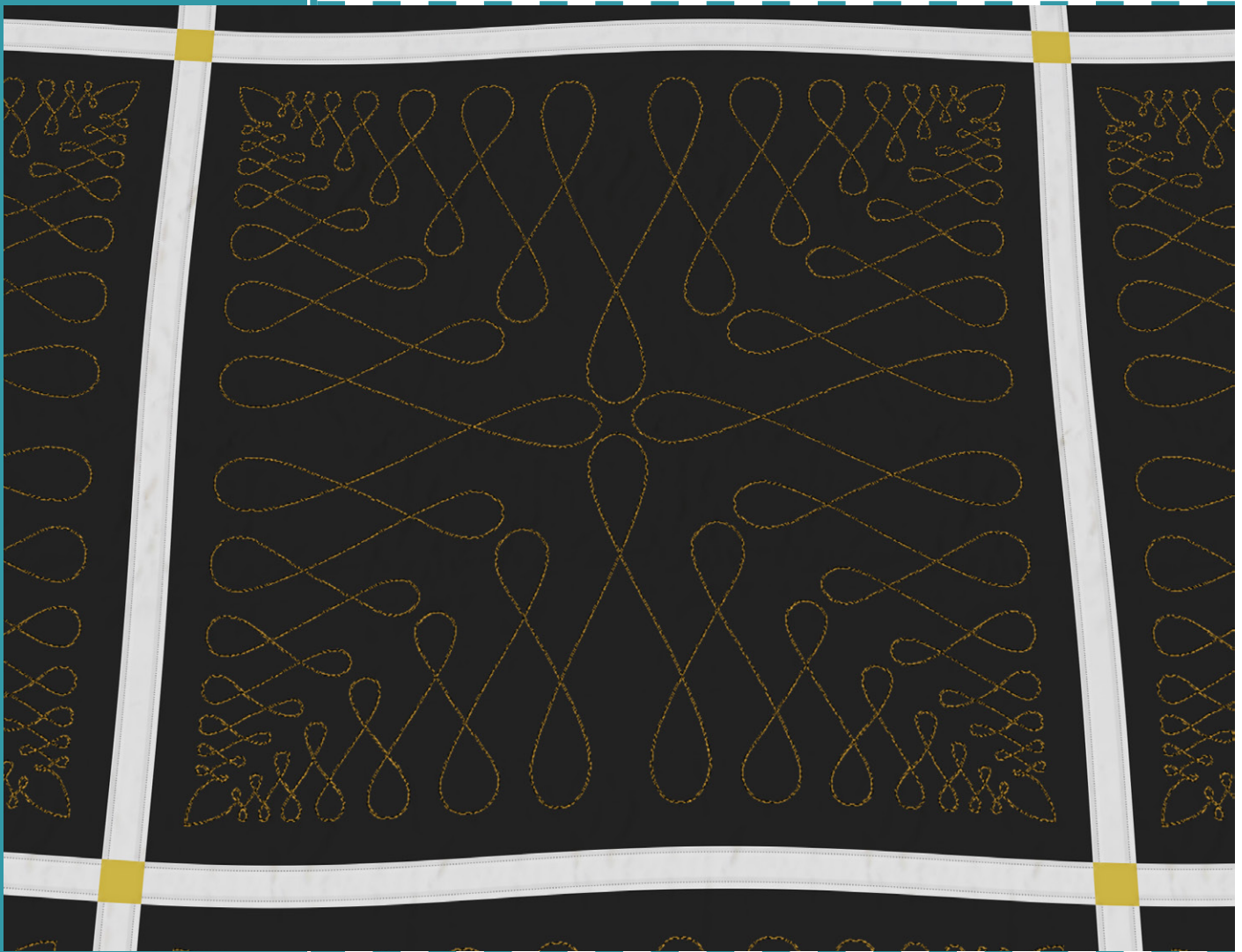


#80264

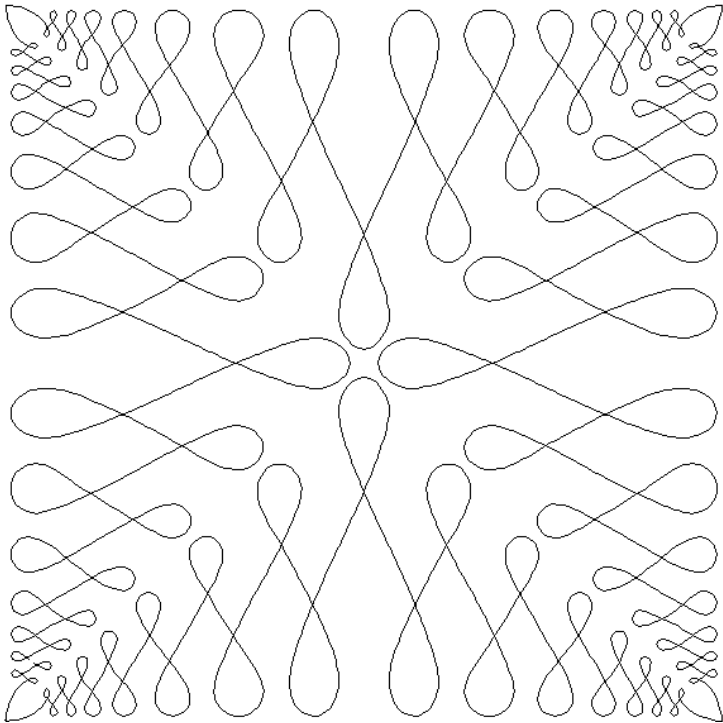


**5**  
DESIGNS

# Fishbone Quilting

by Amanda Murphy

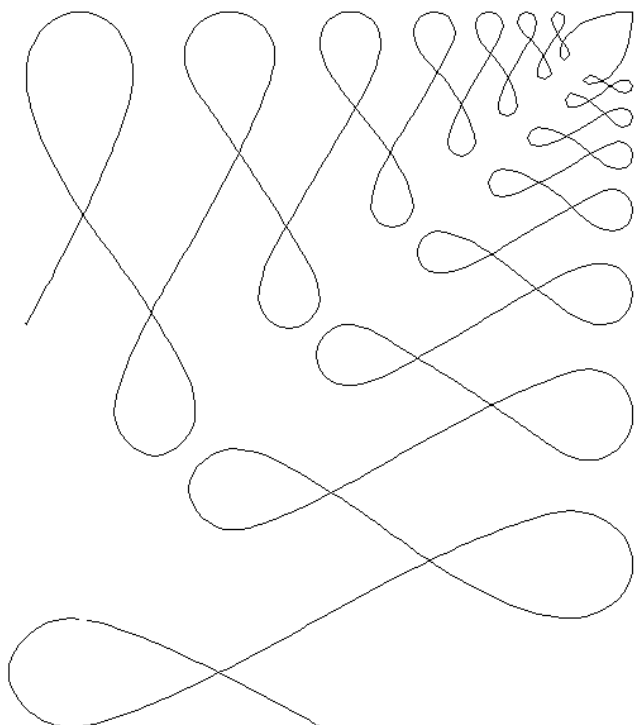
Note: Some designs in this collection may have been created using unique special stitches and/or techniques. To preserve design integrity when rescaling or rotating designs in your software, always rescale or rotate designs using the handles directly on-screen.



## 80264-01 Fishbone Block

Size Inches:                      Size mm:  
8.00 X 8.00 in.    203.20 X 203.20 mm

- 1. Single Color Design..... 0020



## 80264-02 Fishbone Corner

Size Inches:                      Size mm:  
6.00 X 6.88 in.    152.40 X 174.75 mm

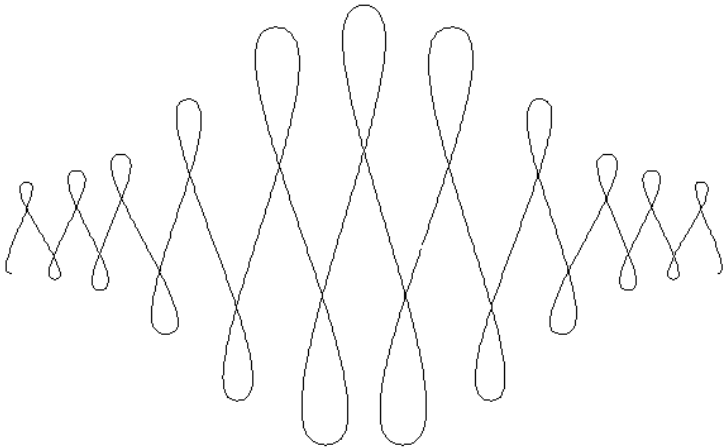
- 1. Single Color Design..... 0020

Note: Some designs in this collection may have been created using unique special stitches and/or techniques. To preserve design integrity when rescaling or rotating designs in your software, always rescale or rotate designs using the handles directly on-screen.

## 80264-03 Fishbone Pantograph

Size Inches:                      Size mm:  
8.60 X 14.00 in.    218.44 X 355.60 mm

■ 1. Single Color Design..... 0020

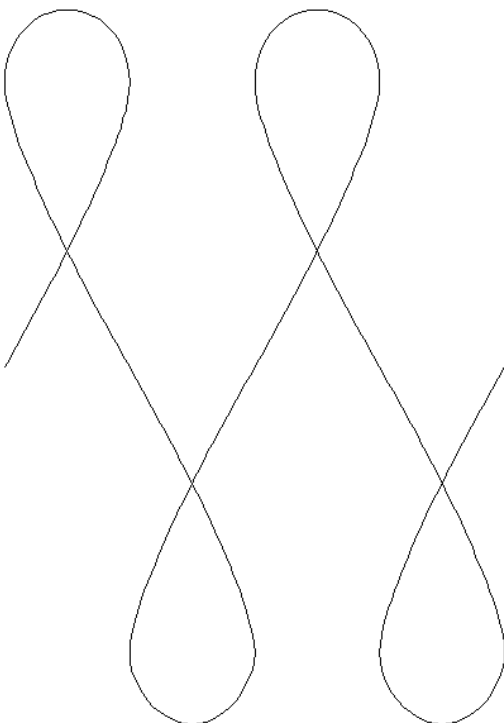


---

## 80264-04 Fishbone Straight Border

Size Inches:                      Size mm:  
4.20 X 6.00 in.    106.68 X 152.40 mm

■ 1. Single Color Design..... 0020



Note: Some designs in this collection may have been created using unique special stitches and/or techniques. To preserve design integrity when rescaling or rotating designs in your software, always rescale or rotate designs using the handles directly on-screen.

## 80264-05 Fishbone Triangle

Size Inches:                      Size mm:  
**5.76 X 12.00 in. 146.30 X 304.80 mm**

- 1. Single Color Design..... 0020

