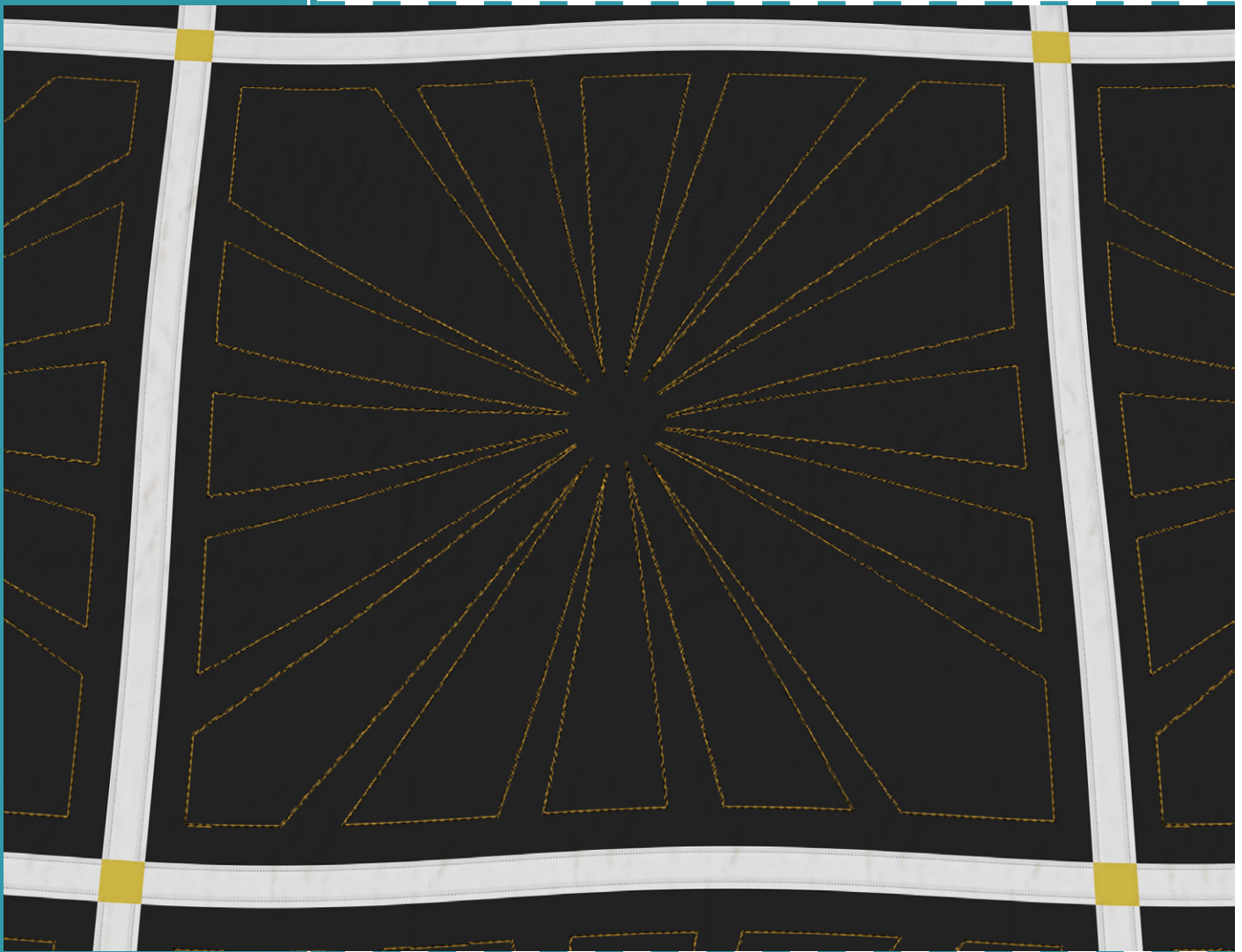


#80271



**5**  
DESIGNS

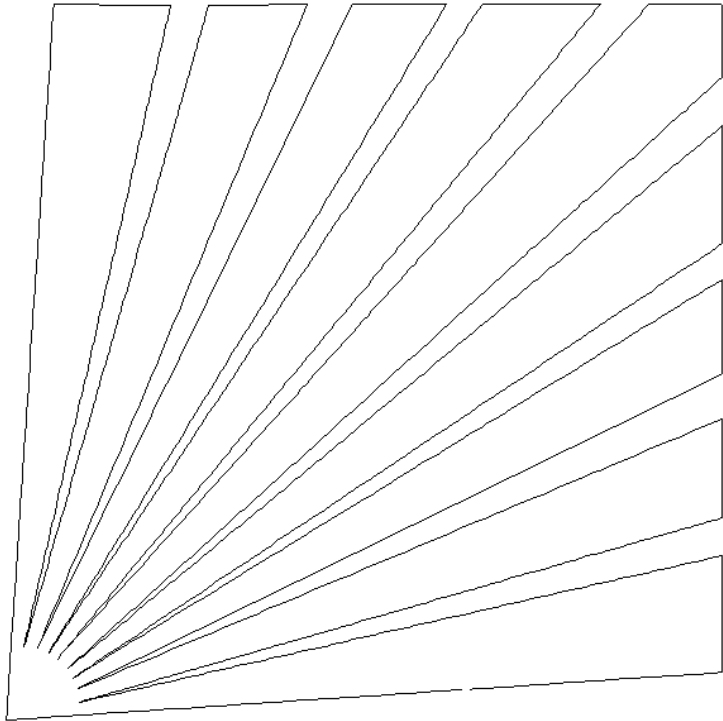
# Rays Quilting

by Amanda Murphy

Note: Some designs in this collection may have been created using unique special stitches and/or techniques. To preserve design integrity when rescaling or rotating designs in your software, always rescale or rotate designs using the handles directly on-screen.

## 80271-01 Rays Motif 1

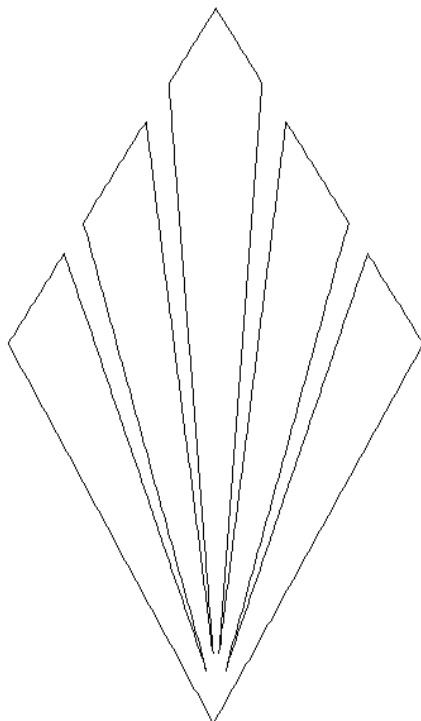
Size Inches:                      Size mm:  
8.00 X 8.00 in.    203.20 X 203.20 mm



■ 1. Single Color Design..... 0020

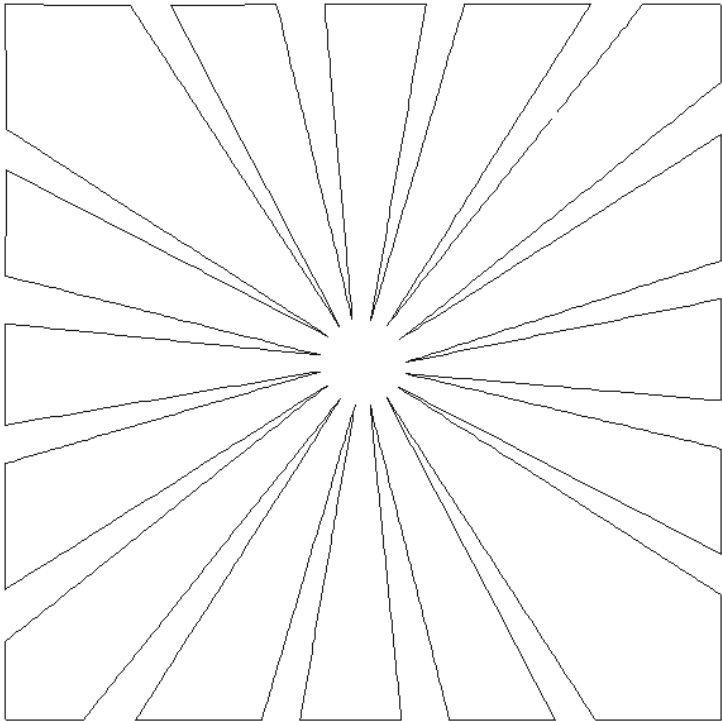
## 80271-02 Rays Motif 2

Size Inches:                      Size mm:  
5.80 X 10.00 in.    147.32 X 254.00 mm



■ 1. Single Color Design..... 0020

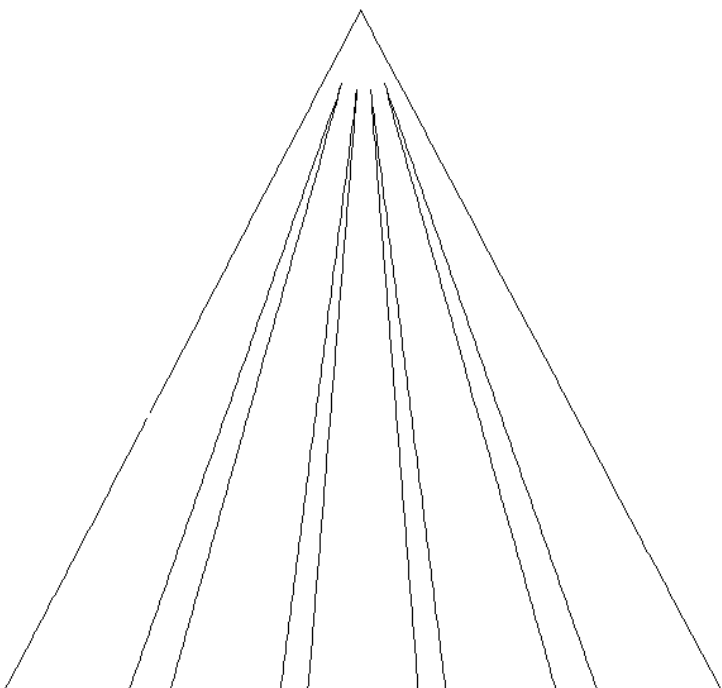
Note: Some designs in this collection may have been created using unique special stitches and/or techniques. To preserve design integrity when rescaling or rotating designs in your software, always rescale or rotate designs using the handles directly on-screen.



### 80271-03 Rays Motif 3

Size Inches:                      Size mm:  
8.00 X 8.00 in.    203.20 X 203.20 mm

- 1. Single Color Design..... 0020

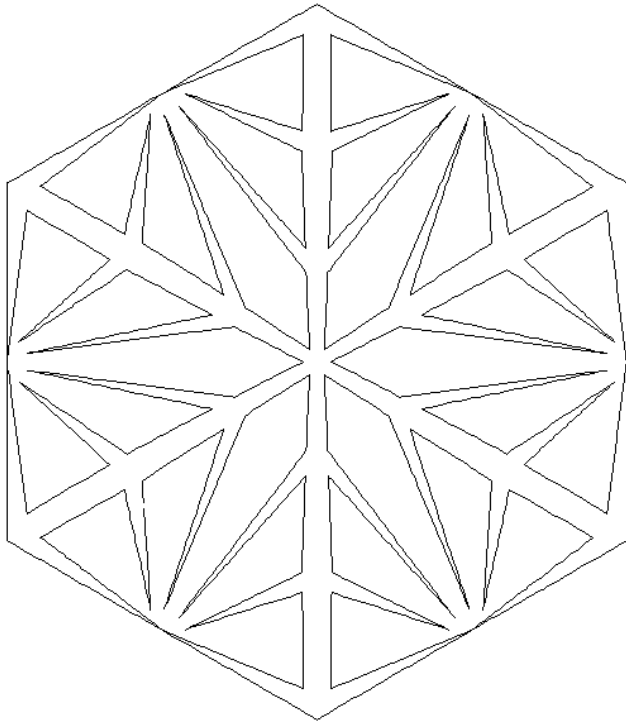


### 80271-04 Rays Motif 4

Size Inches:                      Size mm:  
8.00 X 8.42 in.    203.20 X 213.87 mm

- 1. Single Color Design..... 0020

Note: Some designs in this collection may have been created using unique special stitches and/or techniques. To preserve design integrity when rescaling or rotating designs in your software, always rescale or rotate designs using the handles directly on-screen.



## 80271-05 Rays Motif 5

Size Inches:                      Size mm:  
6.93 X 8.00 in.    176.02 X 203.20 mm

- 1. Single Color Design..... 0020