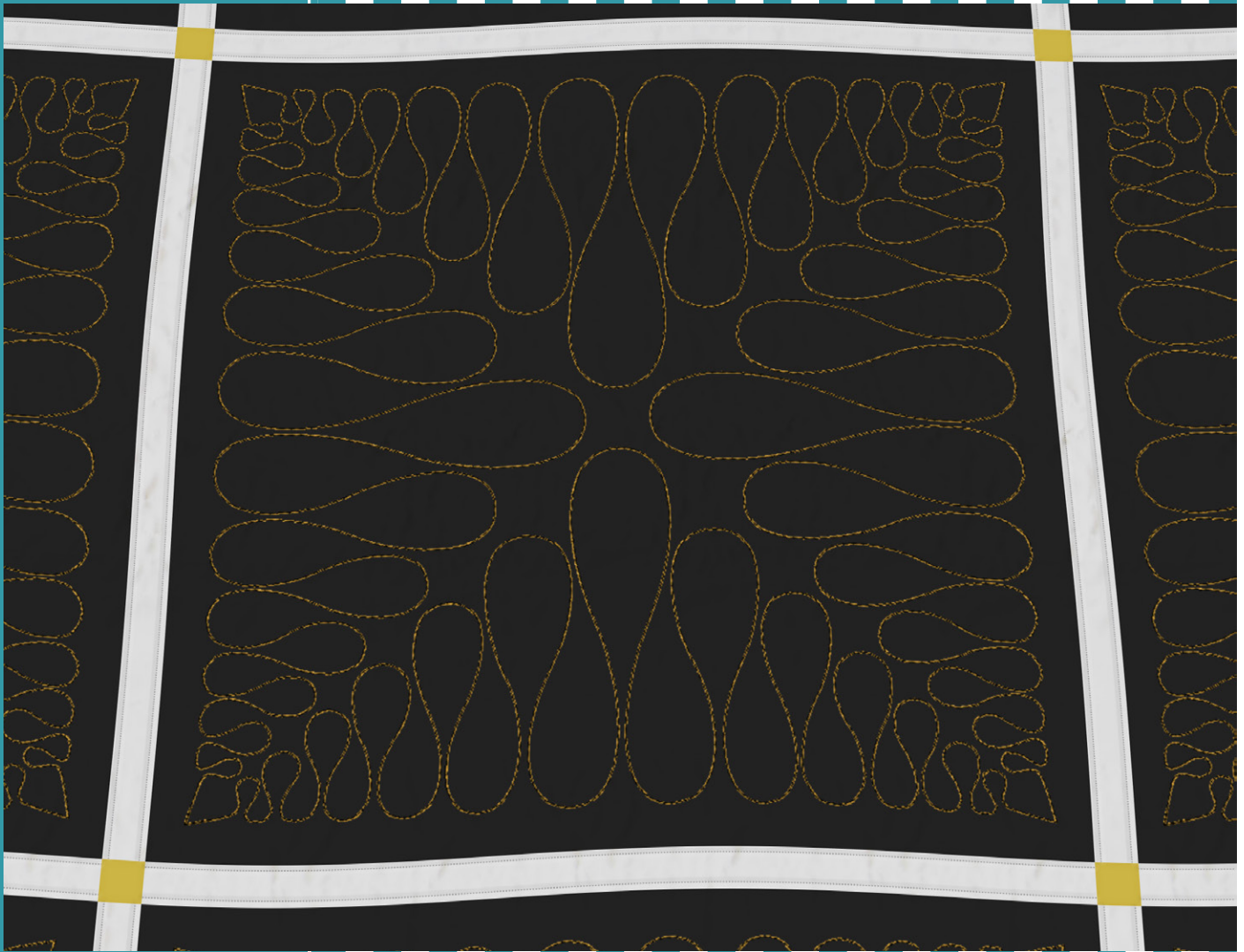


#80276



**5**  
DESIGNS

# Ribbon Candy Quilting

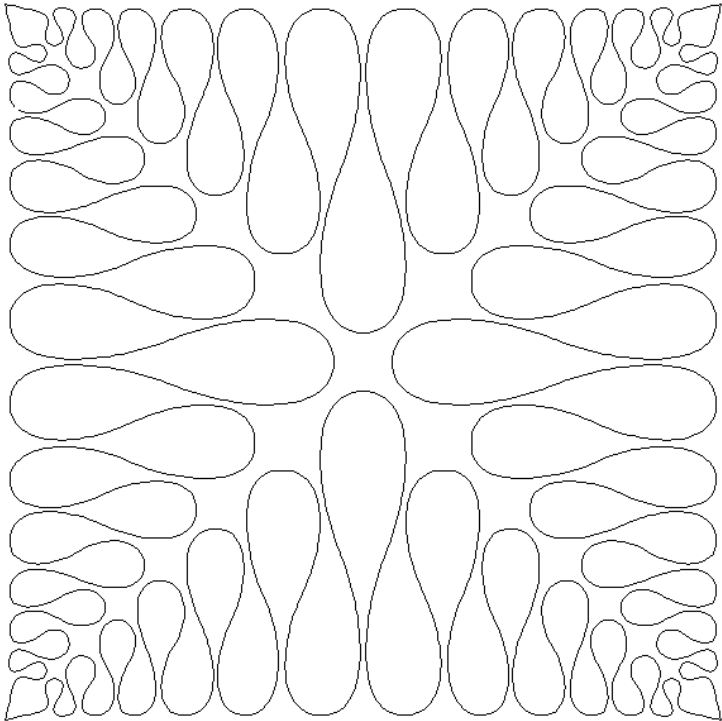
by Amanda Murphy

Note: Some designs in this collection may have been created using unique special stitches and/or techniques. To preserve design integrity when rescaling or rotating designs in your software, always rescale or rotate designs using the handles directly on-screen.

## 80276-01 Ribbon Candy Block

Size Inches:                      Size mm:  
8.00 X 8.00 in.    203.20 X 203.20 mm

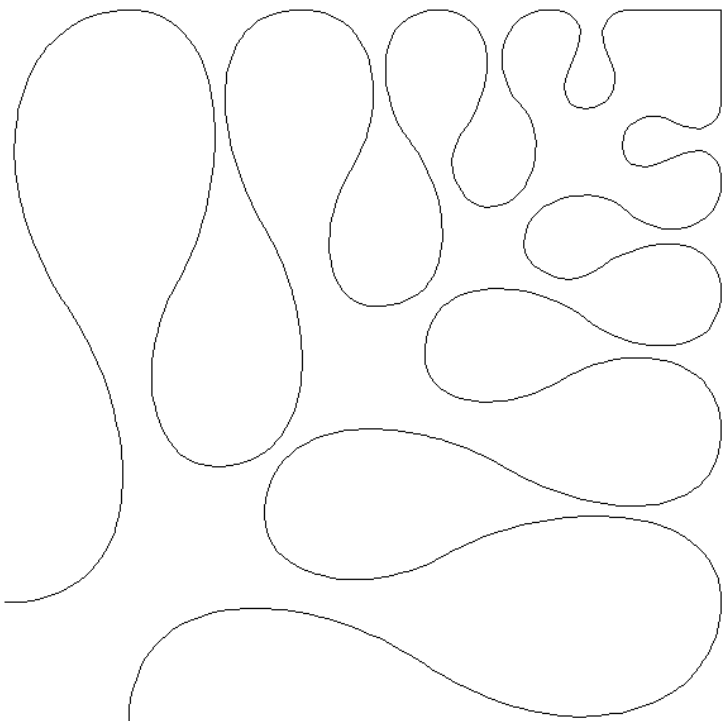
- 1. Single Color Design..... 0020



## 80276-02 Ribbon Candy Corner

Size Inches:                      Size mm:  
7.26 X 7.26 in.    184.40 X 184.40 mm

- 1. Single Color Design..... 0020

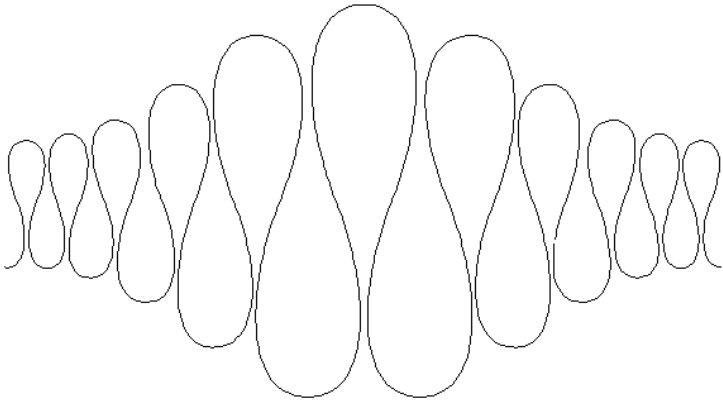


Note: Some designs in this collection may have been created using unique special stitches and/or techniques. To preserve design integrity when rescaling or rotating designs in your software, always rescale or rotate designs using the handles directly on-screen.

## 80276-03 Ribbon Candy Pantograph

Size Inches:                      Size mm:  
**6.73 X 12.28 in.    170.94 X 311.91 mm**

- 1. Single Color Design..... 0020

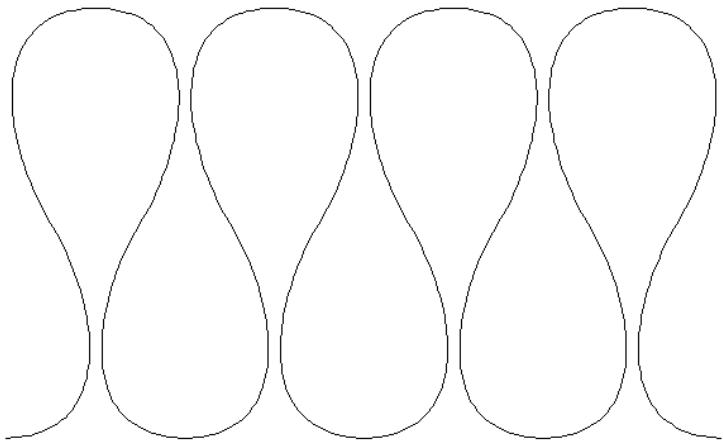


---

## 80276-04 Ribbon Candy Straight Border

Size Inches:                      Size mm:  
**6.00 X 10.00 in.    152.40 X 254.00 mm**

- 1. Single Color Design..... 0020



Note: Some designs in this collection may have been created using unique special stitches and/or techniques. To preserve design integrity when rescaling or rotating designs in your software, always rescale or rotate designs using the handles directly on-screen.

## 80276-05 Ribbon Candy Triangle

Size Inches:                      Size mm:  
5.51 X 12.00 in.    139.95 X 304.80 mm

- 1. Single Color Design..... 0020

