

#80294



76
DESIGNS

Handcrafted Monograms

by Shannon Roberts

Note: Some designs in this collection may have been created using unique special stitches and/or techniques. To preserve design integrity when rescaling or rotating designs in your software, always rescale or rotate designs using the handles directly on-screen.

80294-01 Handcrafted Upper Case A

Size Inches: Size mm: Stitch Count:
2.90 X 3.51 in. 73.66 X 89.15 mm 3745 St.

1. Single Color Design..... 0010



80294-02 Handcrafted Upper Case B

Size Inches: Size mm: Stitch Count:
2.48 X 3.41 in. 62.99 X 86.61 mm 4919 St.

1. Single Color Design..... 0010



Note: Some designs in this collection may have been created using unique special stitches and/or techniques. To preserve design integrity when rescaling or rotating designs in your software, always rescale or rotate designs using the handles directly on-screen.

80294-03 Handcrafted Upper Case C

Size Inches:	Size mm:	Stitch Count:
2.59 X 3.45 in.	65.79 X 87.63 mm	3661 St.

1. Single Color Design..... 0010



80294-04 Handcrafted Upper Case D

Size Inches:	Size mm:	Stitch Count:
2.86 X 3.30 in.	72.64 X 83.82 mm	4849 St.

1. Single Color Design..... 0010

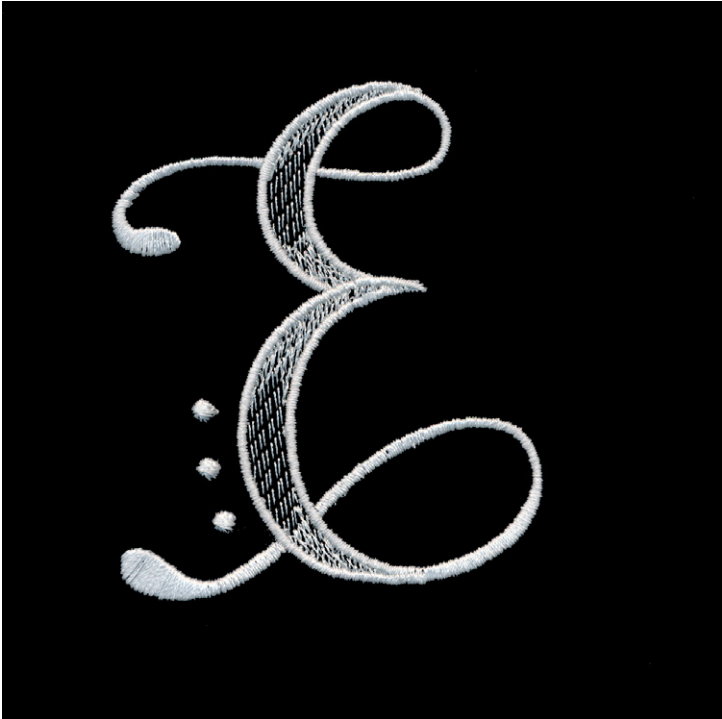


Note: Some designs in this collection may have been created using unique special stitches and/or techniques. To preserve design integrity when rescaling or rotating designs in your software, always rescale or rotate designs using the handles directly on-screen.

80294-05 Handcrafted Upper Case E

Size Inches:	Size mm:	Stitch Count:
2.55 X 3.12 in.	64.77 X 79.25 mm	4035 St.

1. Single Color Design..... 0010



80294-06 Handcrafted Upper Case F

Size Inches:	Size mm:	Stitch Count:
3.05 X 3.49 in.	77.47 X 88.65 mm	3711 St.

1. Single Color Design..... 0010



Note: Some designs in this collection may have been created using unique special stitches and/or techniques. To preserve design integrity when rescaling or rotating designs in your software, always rescale or rotate designs using the handles directly on-screen.

80294-07 Handcrafted Upper Case G

Size Inches:	Size mm:	Stitch Count:
2.10 X 3.51 in.	53.34 X 89.15 mm	3922 St.

1. Single Color Design..... 0010



80294-08 Handcrafted Upper Case H

Size Inches:	Size mm:	Stitch Count:
2.81 X 3.51 in.	71.37 X 89.15 mm	4713 St.

1. Single Color Design..... 0010

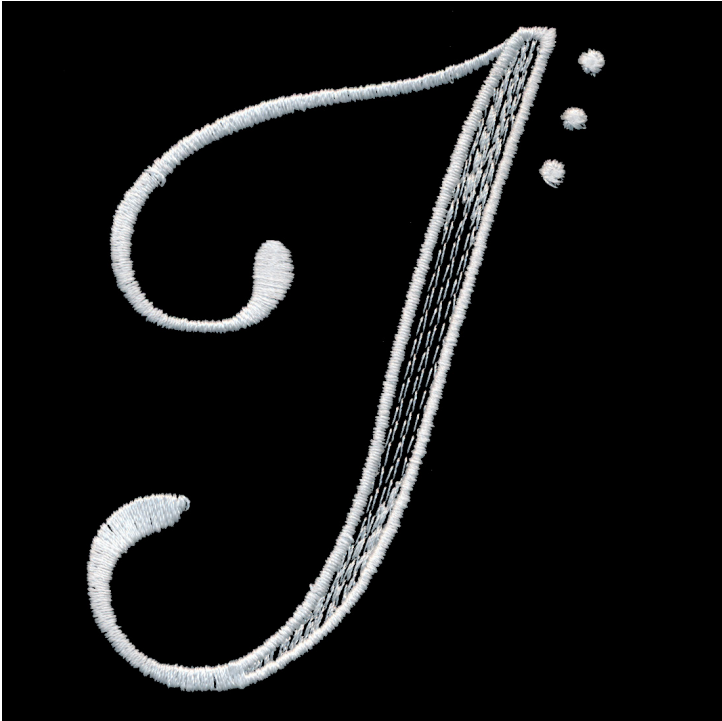


Note: Some designs in this collection may have been created using unique special stitches and/or techniques. To preserve design integrity when rescaling or rotating designs in your software, always rescale or rotate designs using the handles directly on-screen.

80294-09 Handcrafted Upper Case I

Size Inches:	Size mm:	Stitch Count:
2.55 X 3.48 in.	64.77 X 88.39 mm	3104 St.

1. Single Color Design..... 0010



80294-10 Handcrafted Upper Case J

Size Inches:	Size mm:	Stitch Count:
2.24 X 3.51 in.	56.90 X 89.15 mm	3256 St.

1. Single Color Design..... 0010

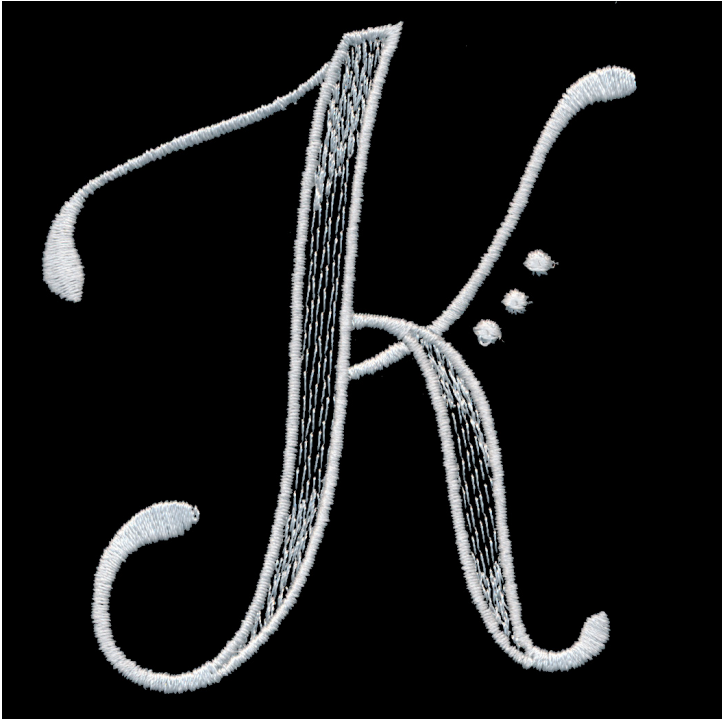


Note: Some designs in this collection may have been created using unique special stitches and/or techniques. To preserve design integrity when rescaling or rotating designs in your software, always rescale or rotate designs using the handles directly on-screen.

80294-11 Handcrafted Upper Case K

Size Inches:	Size mm:	Stitch Count:
2.91 X 3.26 in.	73.91 X 82.80 mm	3985 St.

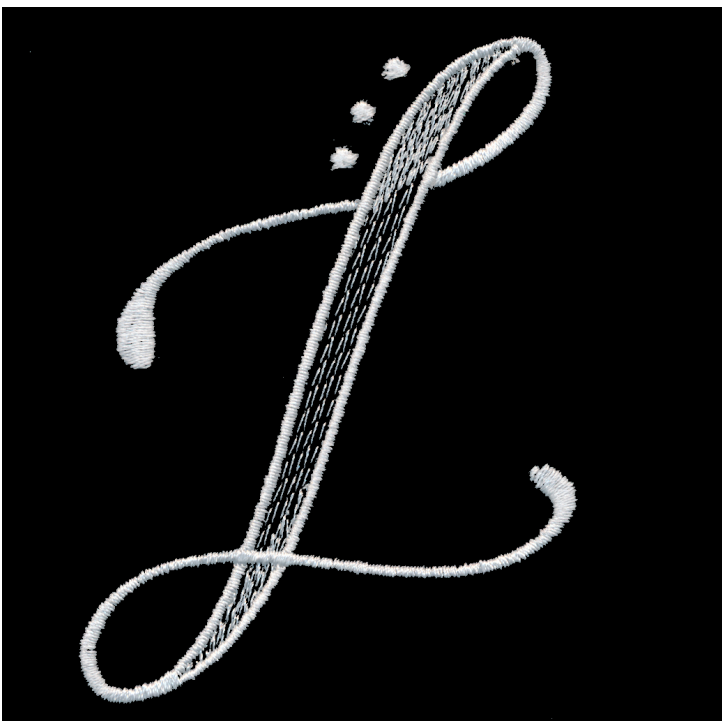
1. Single Color Design..... 0010



80294-12 Handcrafted Upper Case L

Size Inches:	Size mm:	Stitch Count:
2.36 X 3.26 in.	59.94 X 82.80 mm	3099 St.

1. Single Color Design..... 0010



Note: Some designs in this collection may have been created using unique special stitches and/or techniques. To preserve design integrity when rescaling or rotating designs in your software, always rescale or rotate designs using the handles directly on-screen.

80294-13 Handcrafted Upper Case M

Size Inches:	Size mm:	Stitch Count:
3.34 X 3.25 in.	84.84 X 82.55 mm	4951 St.

1. Single Color Design..... 0010



80294-14 Handcrafted Upper Case N

Size Inches:	Size mm:	Stitch Count:
2.67 X 3.49 in.	67.82 X 88.65 mm	4277 St.

1. Single Color Design..... 0010



Note: Some designs in this collection may have been created using unique special stitches and/or techniques. To preserve design integrity when rescaling or rotating designs in your software, always rescale or rotate designs using the handles directly on-screen.

80294-15 Handcrafted Upper Case O

Size Inches:	Size mm:	Stitch Count:
2.64 X 3.45 in.	67.06 X 87.63 mm	4177 St.

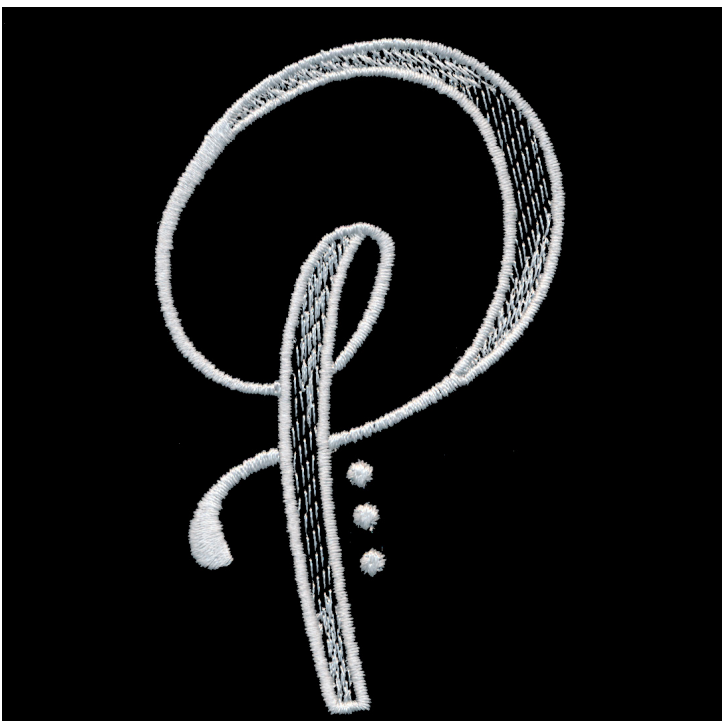
1. Single Color Design..... 0010



80294-16 Handcrafted Upper Case P

Size Inches:	Size mm:	Stitch Count:
2.07 X 3.42 in.	52.58 X 86.87 mm	3910 St.

1. Single Color Design..... 0010



Note: Some designs in this collection may have been created using unique special stitches and/or techniques. To preserve design integrity when rescaling or rotating designs in your software, always rescale or rotate designs using the handles directly on-screen.

80294-17 Handcrafted Upper Case Q

Size Inches:	Size mm:	Stitch Count:
2.04 X 3.51 in.	51.82 X 89.15 mm	3705 St.

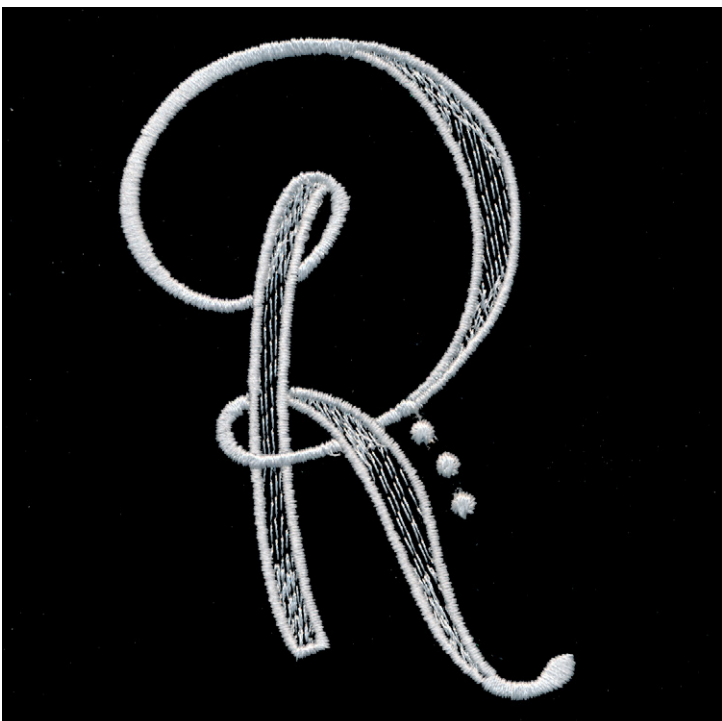
- 1. Single Color Design..... 0010



80294-18 Handcrafted Upper Case R

Size Inches:	Size mm:	Stitch Count:
2.46 X 3.50 in.	62.48 X 88.90 mm	4487 St.

- 1. Single Color Design..... 0010



Note: Some designs in this collection may have been created using unique special stitches and/or techniques. To preserve design integrity when rescaling or rotating designs in your software, always rescale or rotate designs using the handles directly on-screen.

80294-19 Handcrafted Upper Case S

Size Inches:	Size mm:	Stitch Count:
2.14 X 3.49 in.	54.36 X 88.65 mm	3978 St.

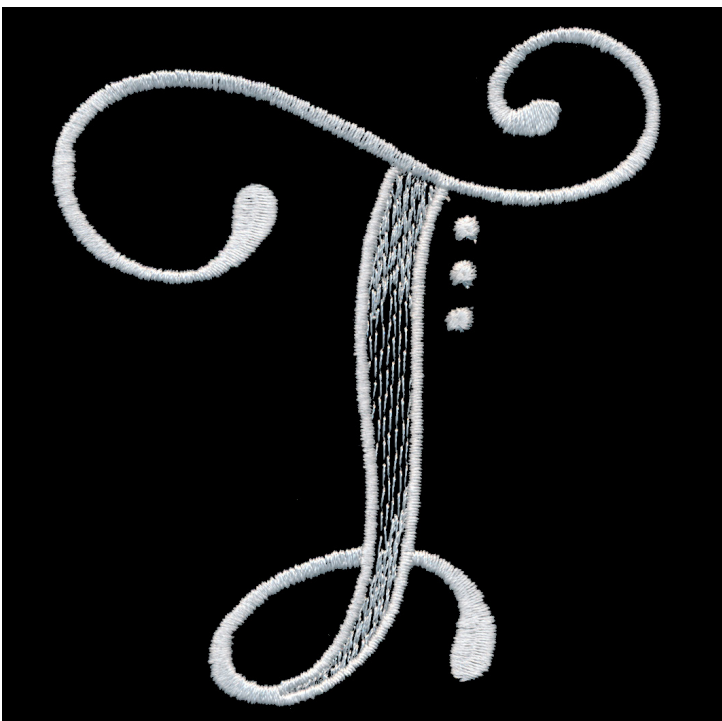
- 1. Single Color Design..... 0010



80294-20 Handcrafted Upper Case T

Size Inches:	Size mm:	Stitch Count:
2.97 X 3.41 in.	75.44 X 86.61 mm	3511 St.

- 1. Single Color Design..... 0010

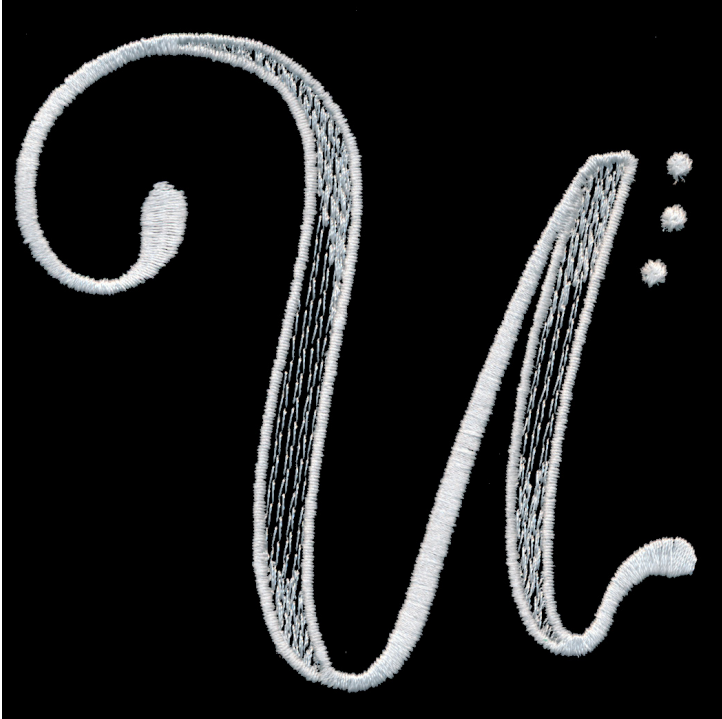


Note: Some designs in this collection may have been created using unique special stitches and/or techniques. To preserve design integrity when rescaling or rotating designs in your software, always rescale or rotate designs using the handles directly on-screen.

80294-21 Handcrafted Upper Case U

Size Inches:	Size mm:	Stitch Count:
3.30 X 3.25 in.	83.82 X 82.55 mm	4527 St.

1. Single Color Design..... 0010



80294-22 Handcrafted Upper Case V

Size Inches:	Size mm:	Stitch Count:
2.81 X 3.51 in.	71.37 X 89.15 mm	3076 St.

1. Single Color Design..... 0010



Note: Some designs in this collection may have been created using unique special stitches and/or techniques. To preserve design integrity when rescaling or rotating designs in your software, always rescale or rotate designs using the handles directly on-screen.

80294-23 Handcrafted Upper Case W

Size Inches:	Size mm:	Stitch Count:
3.30 X 3.02 in.	83.82 X 76.71 mm	4231 St.

1. Single Color Design..... 0010



80294-24 Handcrafted Upper Case X

Size Inches:	Size mm:	Stitch Count:
3.10 X 3.31 in.	78.74 X 84.07 mm	3583 St.

1. Single Color Design..... 0010



Note: Some designs in this collection may have been created using unique special stitches and/or techniques. To preserve design integrity when rescaling or rotating designs in your software, always rescale or rotate designs using the handles directly on-screen.

80294-25 Handcrafted Upper Case Y

Size Inches:	Size mm:	Stitch Count:
2.60 X 3.50 in.	66.04 X 88.90 mm	4540 St.

- 1. Single Color Design..... 0010



80294-26 Handcrafted Upper Case Z

Size Inches:	Size mm:	Stitch Count:
2.82 X 3.41 in.	71.63 X 86.61 mm	4750 St.

- 1. Single Color Design..... 0010



Note: Some designs in this collection may have been created using unique special stitches and/or techniques. To preserve design integrity when rescaling or rotating designs in your software, always rescale or rotate designs using the handles directly on-screen.

80294-27 Handcrafted Lower Case A

Size Inches: Size mm: Stitch Count:
1.99 X 1.42 in. **50.55 X 36.07 mm** **2158 St.**

- 1. Single Color Design..... 0010



80294-28 Handcrafted Lower Case B

Size Inches: Size mm: Stitch Count:
2.06 X 2.77 in. **52.32 X 70.36 mm** **3397 St.**

- 1. Single Color Design..... 0010



Note: Some designs in this collection may have been created using unique special stitches and/or techniques. To preserve design integrity when rescaling or rotating designs in your software, always rescale or rotate designs using the handles directly on-screen.

80294-29 Handcrafted Lower Case C

Size Inches: Size mm: Stitch Count:
1.37 X 1.95 in. **34.80 X 49.53 mm** **1797 St.**

- 1. Single Color Design..... 0010



80294-30 Handcrafted Lower Case D

Size Inches: Size mm: Stitch Count:
2.15 X 2.65 in. **54.61 X 67.31 mm** **3032 St.**

- 1. Single Color Design..... 0010



Note: Some designs in this collection may have been created using unique special stitches and/or techniques. To preserve design integrity when rescaling or rotating designs in your software, always rescale or rotate designs using the handles directly on-screen.

80294-31 Handcrafted Lower Case E

Size Inches:	Size mm:	Stitch Count:
1.38 X 1.52 in.	35.05 X 38.61 mm	1524 St.

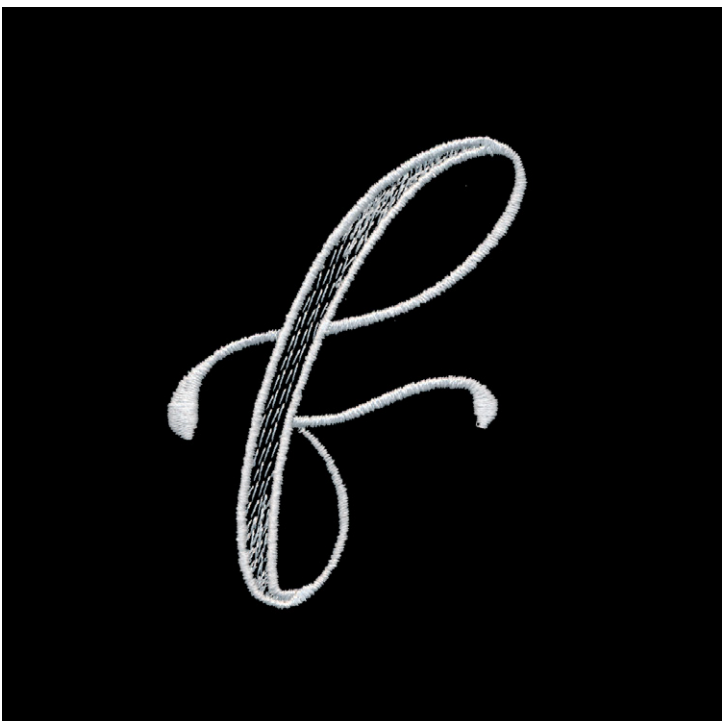
- 1. Single Color Design..... 0010



80294-32 Handcrafted Lower Case F

Size Inches:	Size mm:	Stitch Count:
1.95 X 2.70 in.	49.53 X 68.58 mm	2596 St.

- 1. Single Color Design..... 0010



Note: Some designs in this collection may have been created using unique special stitches and/or techniques. To preserve design integrity when rescaling or rotating designs in your software, always rescale or rotate designs using the handles directly on-screen.

80294-33 Handcrafted Lower Case G

Size Inches:	Size mm:	Stitch Count:
1.89 X 2.70 in.	48.01 X 68.58 mm	2758 St.

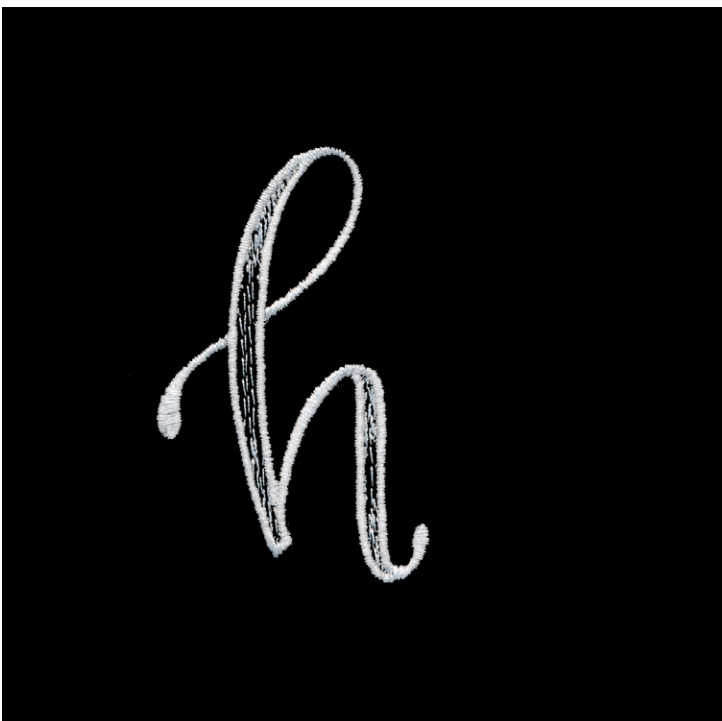
- 1. Single Color Design..... 0010



80294-34 Handcrafted Lower Case H

Size Inches:	Size mm:	Stitch Count:
1.57 X 2.54 in.	39.88 X 64.52 mm	2423 St.

- 1. Single Color Design..... 0010

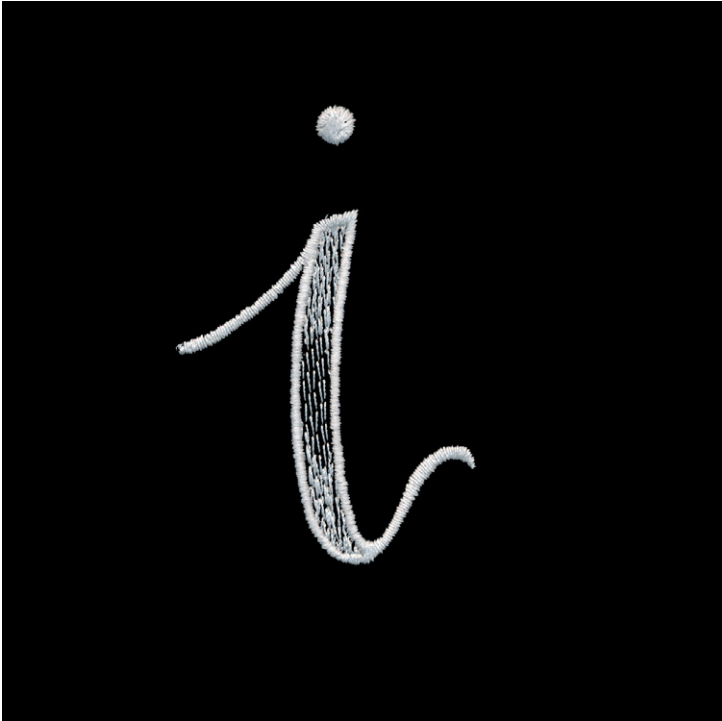


Note: Some designs in this collection may have been created using unique special stitches and/or techniques. To preserve design integrity when rescaling or rotating designs in your software, always rescale or rotate designs using the handles directly on-screen.

80294-35 Handcrafted Lower Case I

Size Inches: Size mm: Stitch Count:
1.37 X 2.51 in. **34.80 X 63.75 mm** **1515 St.**

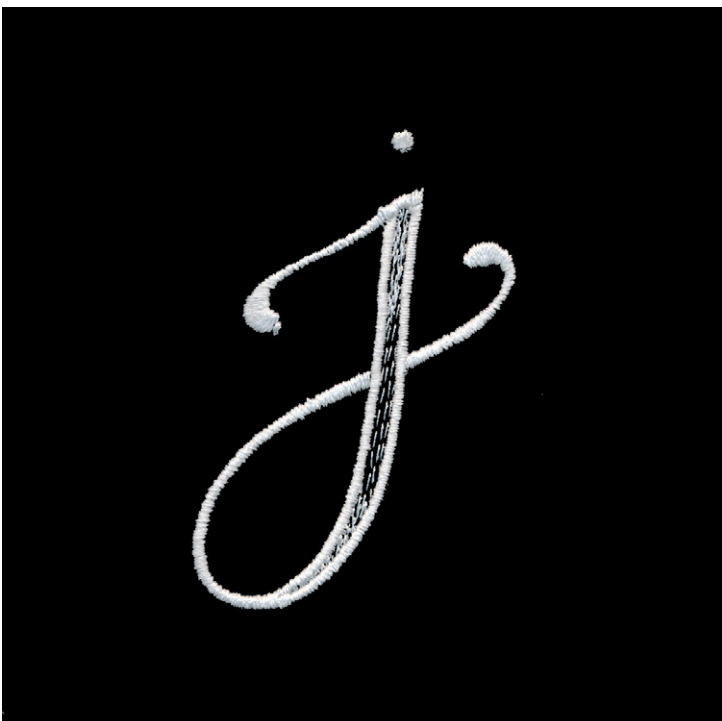
- 1. Single Color Design..... 0010



80294-36 Handcrafted Lower Case J

Size Inches: Size mm: Stitch Count:
1.72 X 2.66 in. **43.69 X 67.56 mm** **1931 St.**

- 1. Single Color Design..... 0010

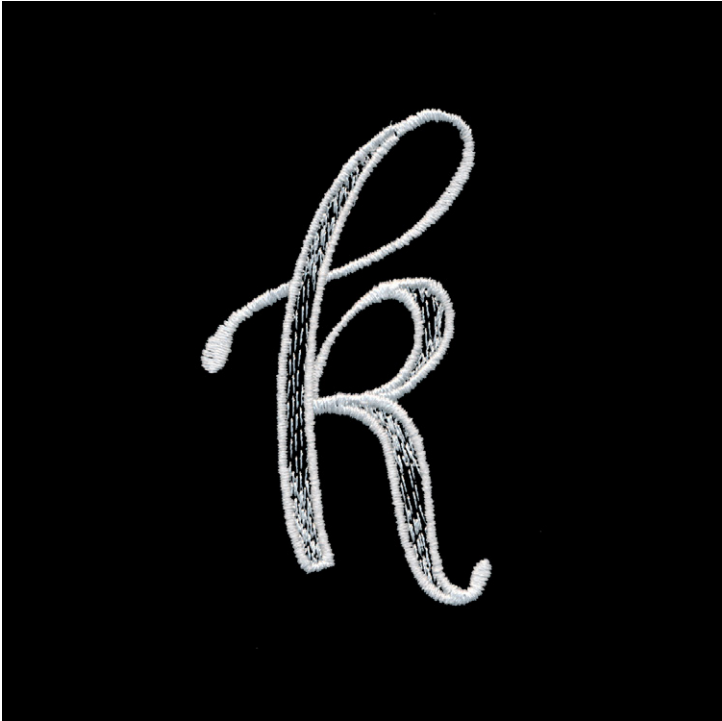


Note: Some designs in this collection may have been created using unique special stitches and/or techniques. To preserve design integrity when rescaling or rotating designs in your software, always rescale or rotate designs using the handles directly on-screen.

80294-37 Handcrafted Lower Case K

Size Inches:	Size mm:	Stitch Count:
1.62 X 2.74 in.	41.15 X 69.60 mm	3235 St.

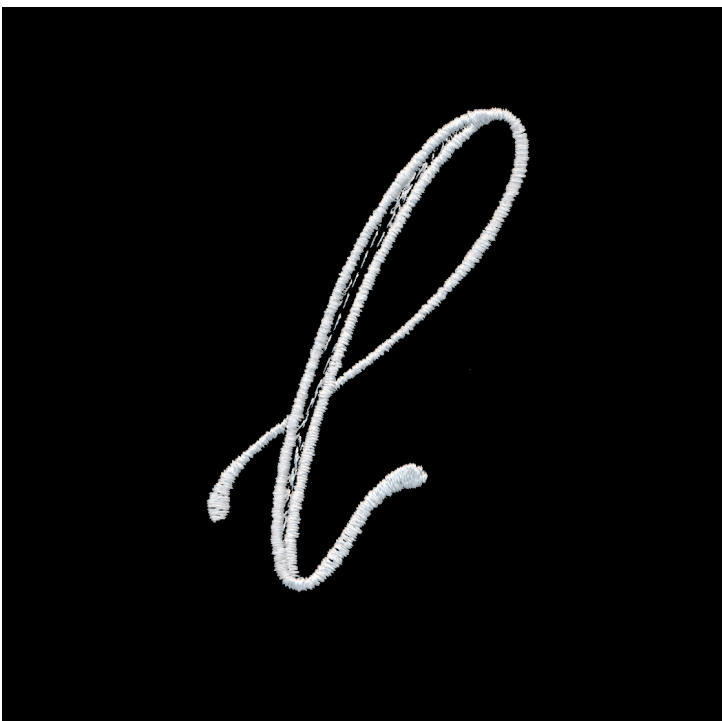
- 1. Single Color Design..... 0010



80294-38 Handcrafted Lower Case L

Size Inches:	Size mm:	Stitch Count:
1.70 X 2.52 in.	43.18 X 64.01 mm	1937 St.

- 1. Single Color Design..... 0010



Note: Some designs in this collection may have been created using unique special stitches and/or techniques. To preserve design integrity when rescaling or rotating designs in your software, always rescale or rotate designs using the handles directly on-screen.

80294-39 Handcrafted Lower Case M

Size Inches: Size mm: Stitch Count:
2.10 X 1.73 in. 53.34 X 43.94 mm 2829 St.

1. Single Color Design..... 0010



80294-40 Handcrafted Lower Case N

Size Inches: Size mm: Stitch Count:
1.74 X 1.72 in. 44.20 X 43.69 mm 2062 St.

1. Single Color Design..... 0010

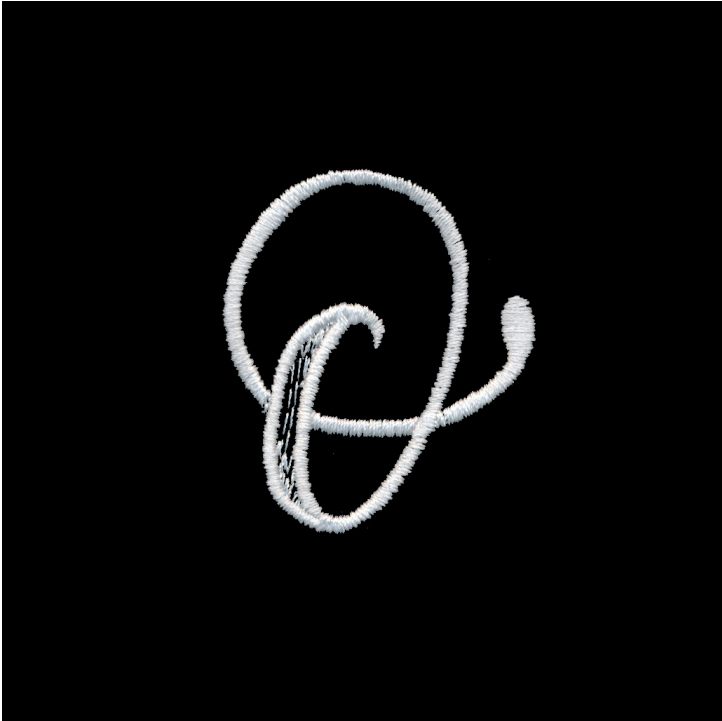


Note: Some designs in this collection may have been created using unique special stitches and/or techniques. To preserve design integrity when rescaling or rotating designs in your software, always rescale or rotate designs using the handles directly on-screen.

80294-41 Handcrafted Lower Case O

Size Inches: Size mm: Stitch Count:
1.49 X 1.74 in. **37.85 X 44.20 mm** **1724 St.**

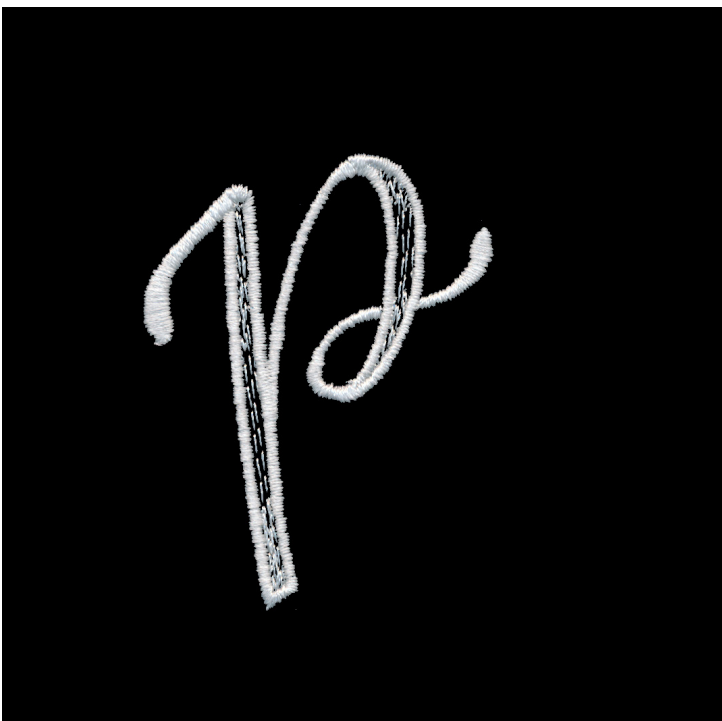
- 1. Single Color Design..... 0010



80294-42 Handcrafted Lower Case P

Size Inches: Size mm: Stitch Count:
1.73 X 2.28 in. **43.94 X 57.91 mm** **2251 St.**

- 1. Single Color Design..... 0010

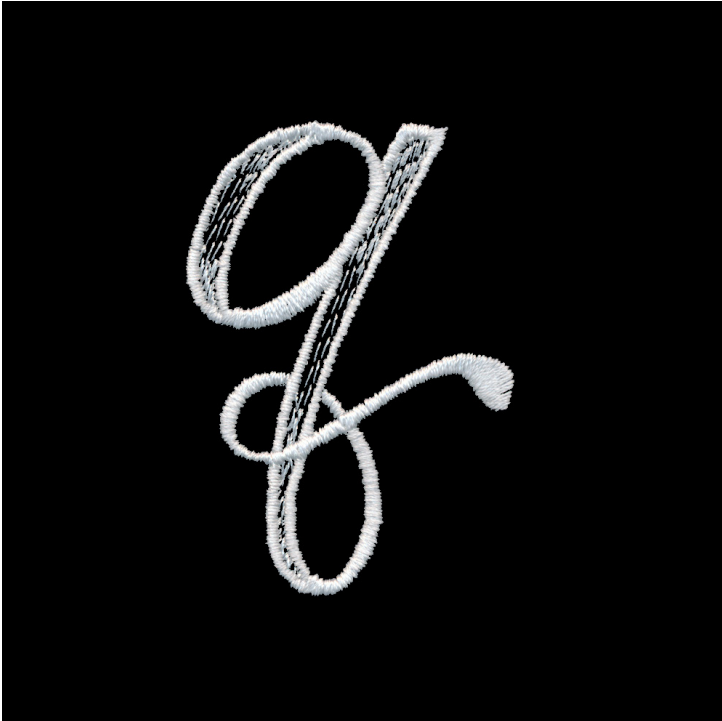


Note: Some designs in this collection may have been created using unique special stitches and/or techniques. To preserve design integrity when rescaling or rotating designs in your software, always rescale or rotate designs using the handles directly on-screen.

80294-43 Handcrafted Lower Case Q

Size Inches:	Size mm:	Stitch Count:
1.50 X 2.20 in.	38.10 X 55.88 mm	2533 St.

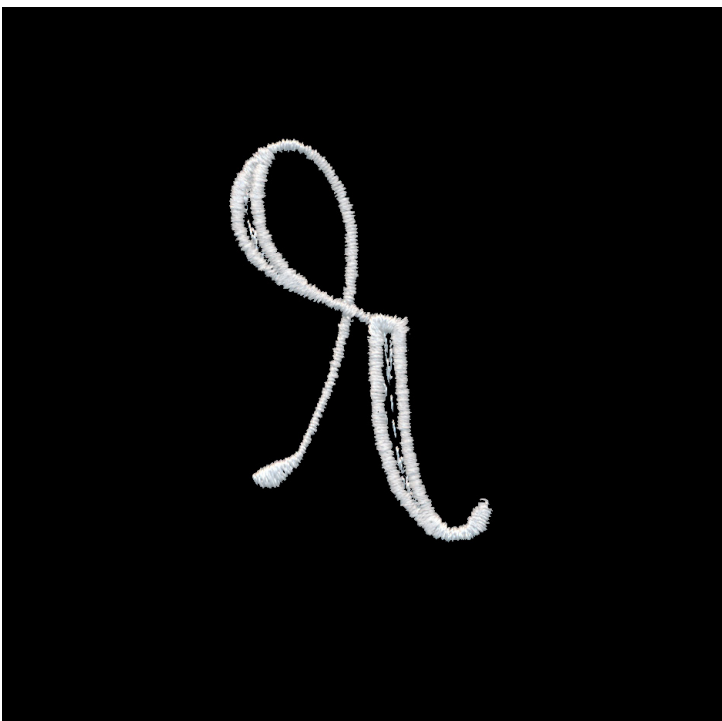
1. Single Color Design..... 0010



80294-44 Handcrafted Lower Case R

Size Inches:	Size mm:	Stitch Count:
1.13 X 1.75 in.	28.70 X 44.45 mm	1318 St.

1. Single Color Design..... 0010

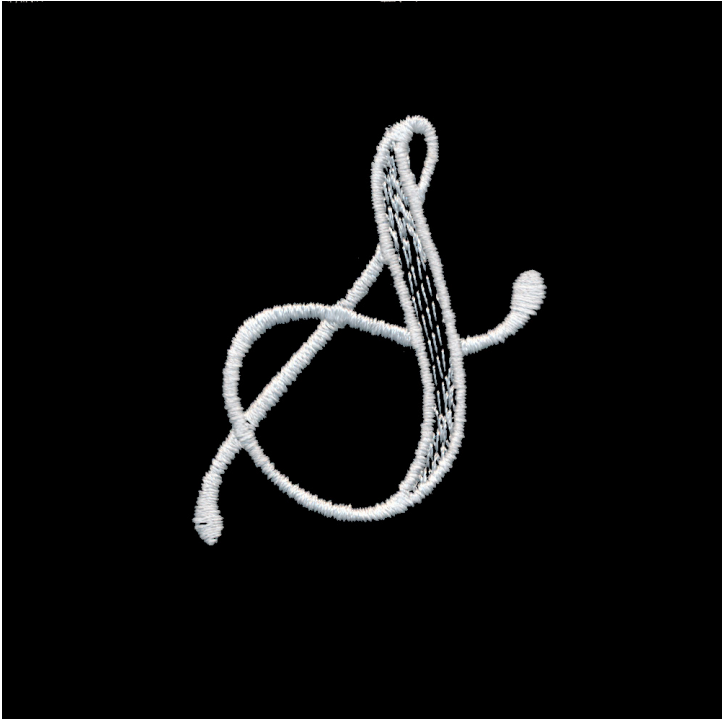


Note: Some designs in this collection may have been created using unique special stitches and/or techniques. To preserve design integrity when rescaling or rotating designs in your software, always rescale or rotate designs using the handles directly on-screen.

80294-45 Handcrafted Lower Case S

Size Inches:	Size mm:	Stitch Count:
1.62 X 2.01 in.	41.15 X 51.05 mm	1886 St.

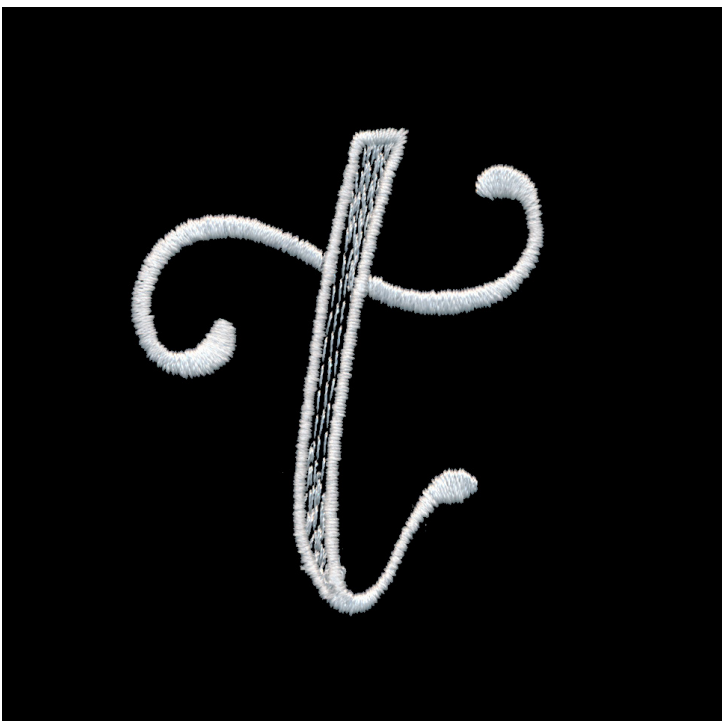
- 1. Single Color Design..... 0010



80294-46 Handcrafted Lower Case T

Size Inches:	Size mm:	Stitch Count:
1.84 X 2.21 in.	46.74 X 56.13 mm	1979 St.

- 1. Single Color Design..... 0010



Note: Some designs in this collection may have been created using unique special stitches and/or techniques. To preserve design integrity when rescaling or rotating designs in your software, always rescale or rotate designs using the handles directly on-screen.

80294-47 Handcrafted Lower Case U

Size Inches: Size mm: Stitch Count:
1.75 X 1.72 in. **44.45 X 43.69 mm** **2322 St.**

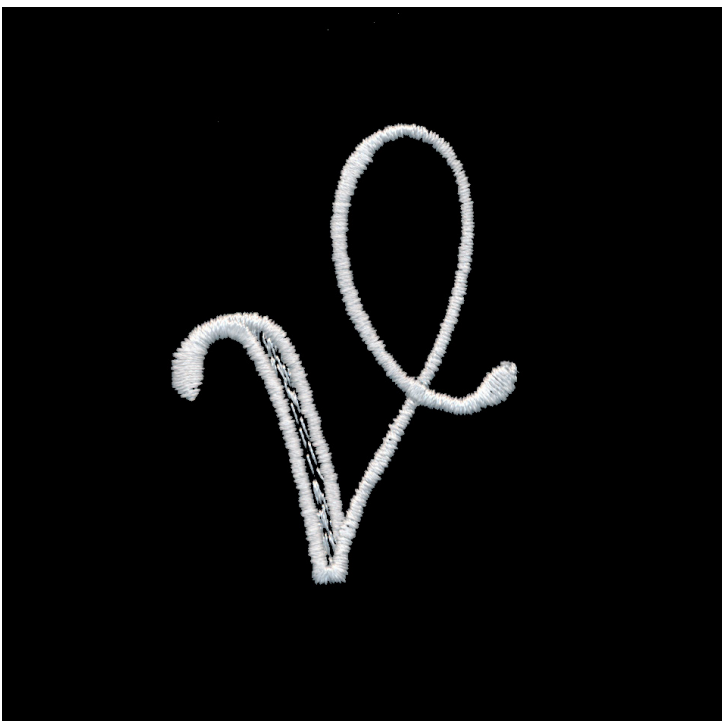
1. Single Color Design..... 0010



80294-48 Handcrafted Lower Case V

Size Inches: Size mm: Stitch Count:
1.53 X 2.01 in. **38.86 X 51.05 mm** **1549 St.**

1. Single Color Design..... 0010



Note: Some designs in this collection may have been created using unique special stitches and/or techniques. To preserve design integrity when rescaling or rotating designs in your software, always rescale or rotate designs using the handles directly on-screen.

80294-49 Handcrafted Lower Case W

Size Inches:	Size mm:	Stitch Count:
1.99 X 2.02 in.	50.55 X 51.31 mm	2294 St.

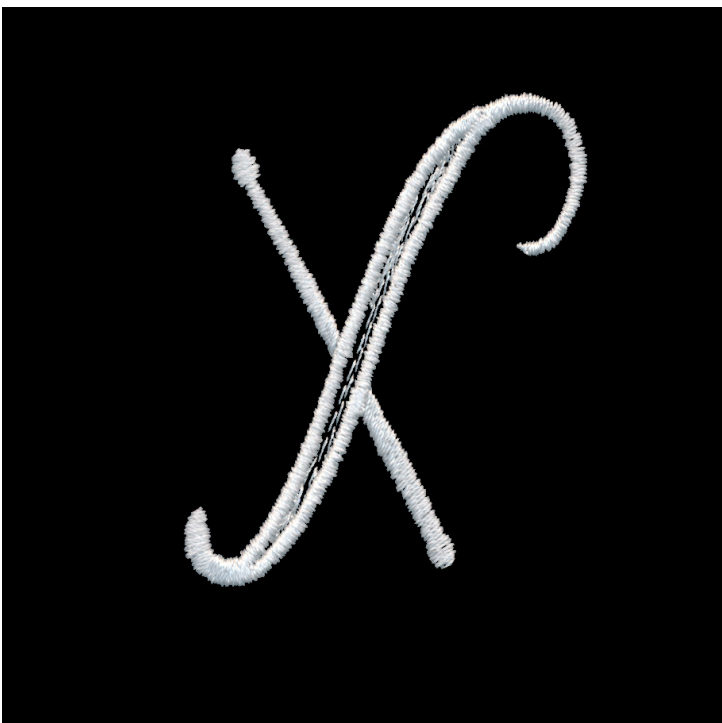
1. Single Color Design..... 0010



80294-50 Handcrafted Lower Case X

Size Inches:	Size mm:	Stitch Count:
1.79 X 2.01 in.	45.47 X 51.05 mm	1731 St.

1. Single Color Design..... 0010

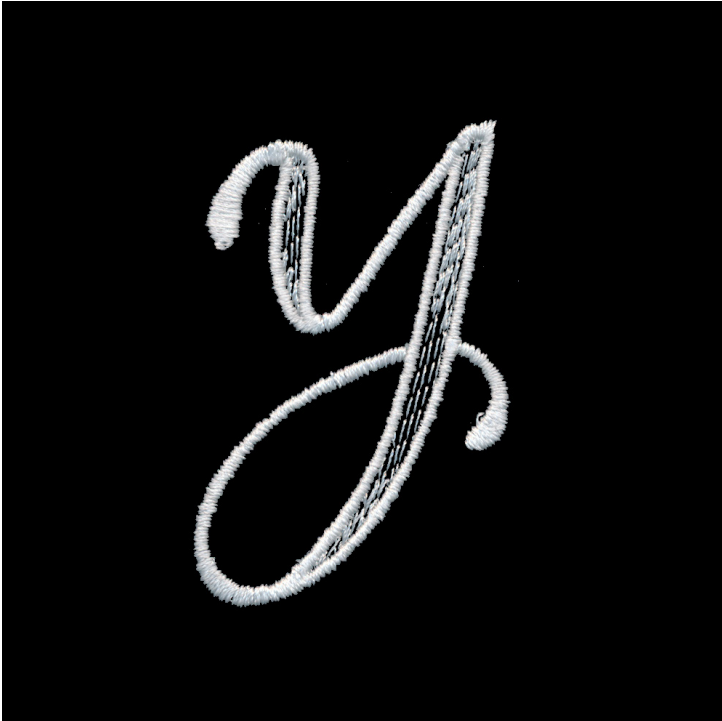


Note: Some designs in this collection may have been created using unique special stitches and/or techniques. To preserve design integrity when rescaling or rotating designs in your software, always rescale or rotate designs using the handles directly on-screen.

80294-51 Handcrafted Lower Case Y

Size Inches:	Size mm:	Stitch Count:
1.49 X 2.20 in.	37.85 X 55.88 mm	2395 St.

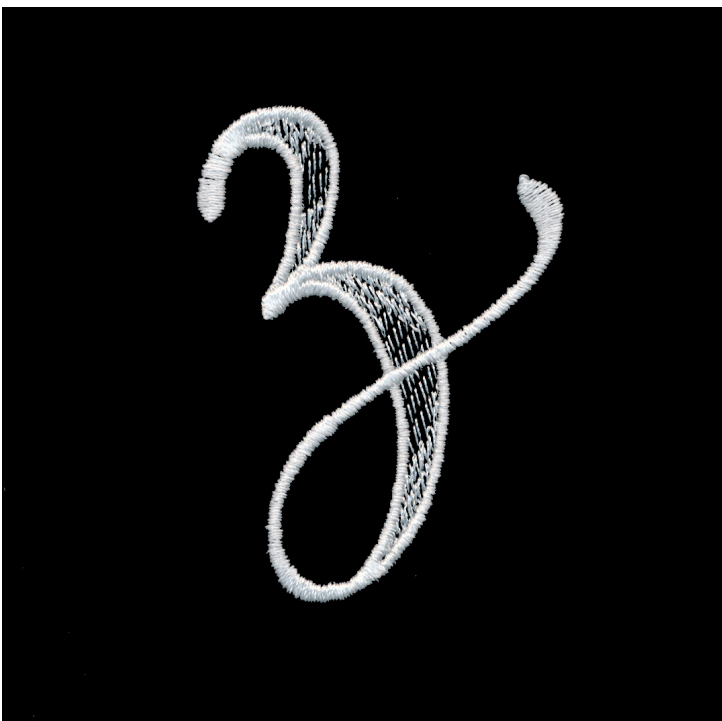
1. Single Color Design..... 0010



80294-52 Handcrafted Lower Case Z

Size Inches:	Size mm:	Stitch Count:
1.82 X 2.49 in.	46.23 X 63.25 mm	2482 St.

1. Single Color Design..... 0010

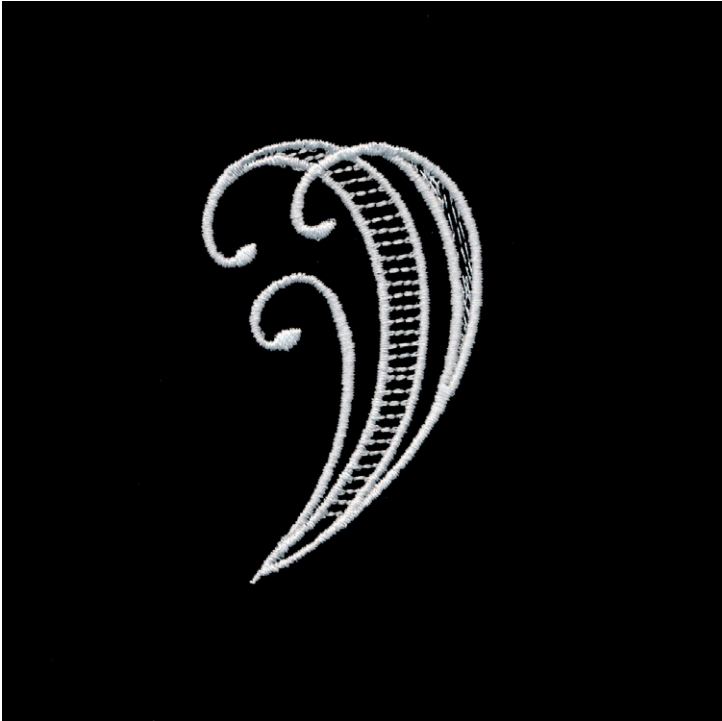


Note: Some designs in this collection may have been created using unique special stitches and/or techniques. To preserve design integrity when rescaling or rotating designs in your software, always rescale or rotate designs using the handles directly on-screen.

80294-53 Handcrafted Embellishment 1

Size Inches:	Size mm:	Stitch Count:
1.58 X 2.51 in.	40.13 X 63.75 mm	3452 St.

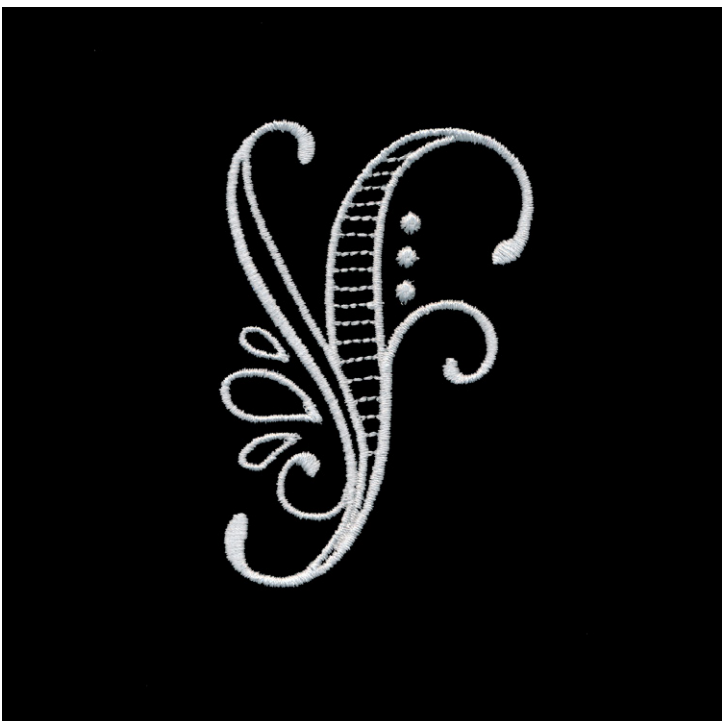
- 1. Single Color Design..... 0010



80294-54 Handcrafted Embellishment 2

Size Inches:	Size mm:	Stitch Count:
2.13 X 3.01 in.	54.10 X 76.45 mm	4171 St.

- 1. Single Color Design..... 0010

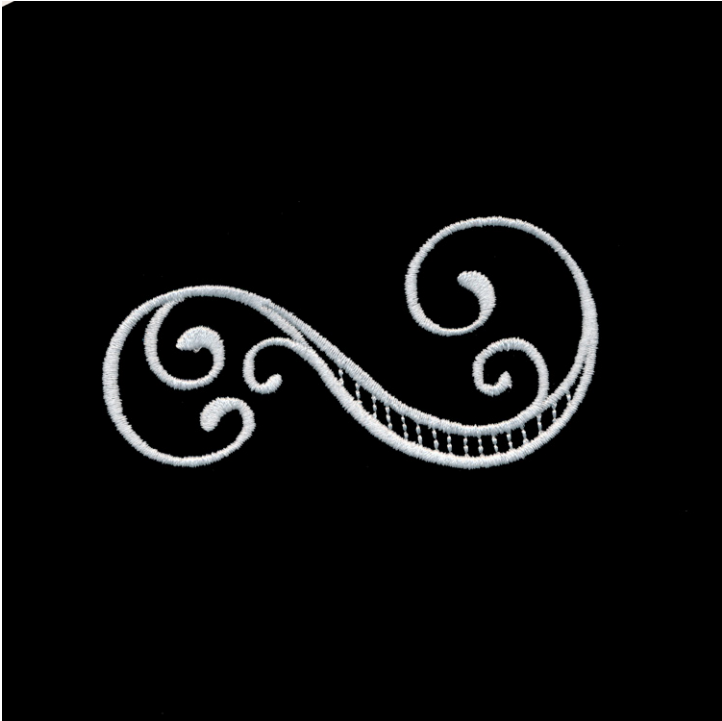


Note: Some designs in this collection may have been created using unique special stitches and/or techniques. To preserve design integrity when rescaling or rotating designs in your software, always rescale or rotate designs using the handles directly on-screen.

80294-55 Handcrafted Embellishment 3

Size Inches: Size mm: Stitch Count:
3.46 X 1.77 in. **87.88 X 44.96 mm** **3723 St.**

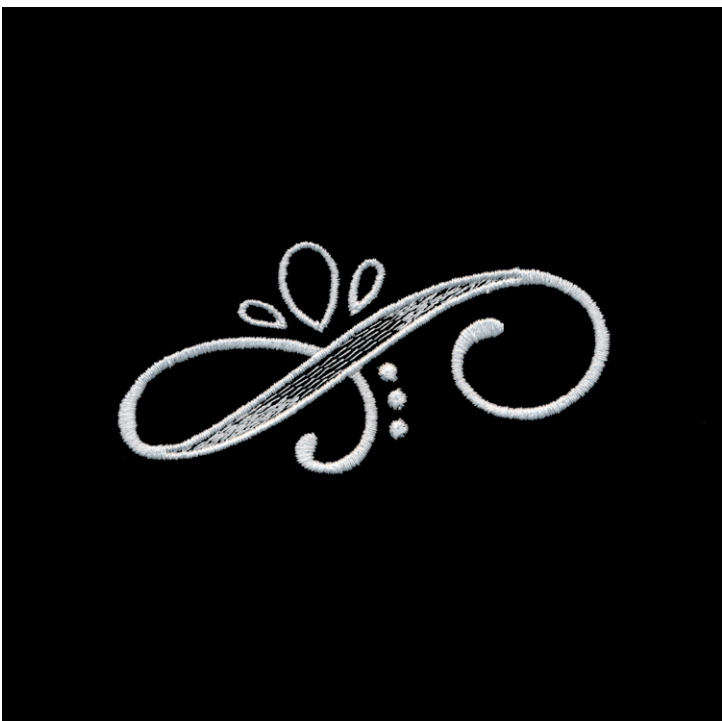
- 1. Single Color Design..... 0010



80294-56 Handcrafted Embellishment 4

Size Inches: Size mm: Stitch Count:
3.44 X 1.65 in. **87.38 X 41.91 mm** **3364 St.**

- 1. Single Color Design..... 0010

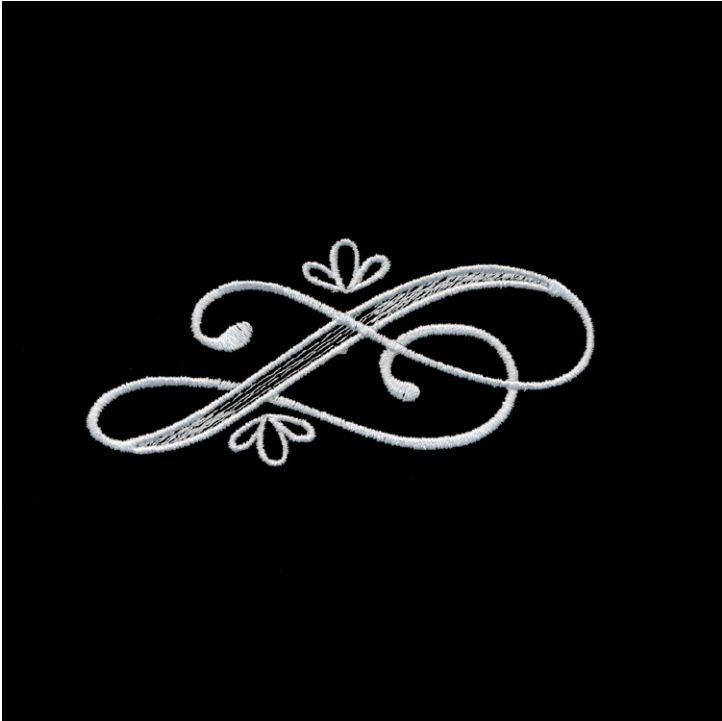


Note: Some designs in this collection may have been created using unique special stitches and/or techniques. To preserve design integrity when rescaling or rotating designs in your software, always rescale or rotate designs using the handles directly on-screen.

80294-57 Handcrafted Embellishment 5

Size Inches: Size mm: Stitch Count:
3.92 X 1.81 in. **99.57 X 45.97 mm** **4651 St.**

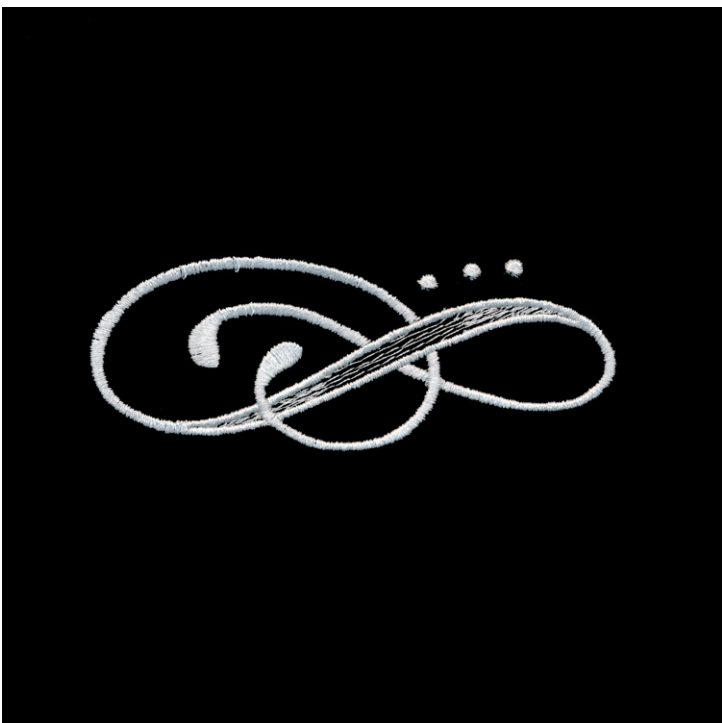
1. Single Color Design..... 0010



80294-58 Handcrafted Embellishment 6

Size Inches: Size mm: Stitch Count:
3.73 X 1.48 in. **94.74 X 37.59 mm** **3413 St.**

1. Single Color Design..... 0010



Note: Some designs in this collection may have been created using unique special stitches and/or techniques. To preserve design integrity when rescaling or rotating designs in your software, always rescale or rotate designs using the handles directly on-screen.

80294-59 Handcrafted Embellishment 7

Size Inches:	Size mm:	Stitch Count:
2.99 X 2.14 in.	75.95 X 54.36 mm	4028 St.

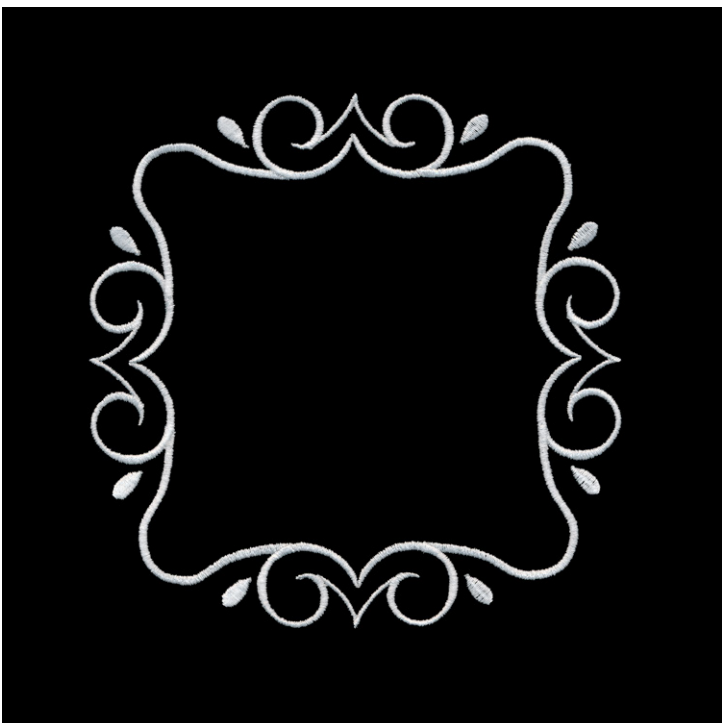
1. Single Color Design..... 0010



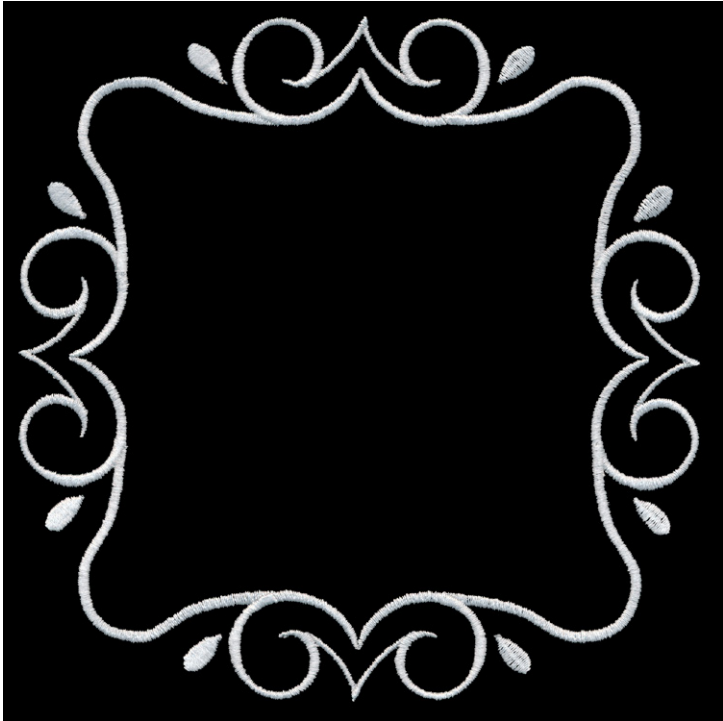
80294-60 Handcrafted Single Letter Frame 1

Size Inches:	Size mm:	Stitch Count:
6.01 X 6.01 in.	152.65 X 152.65 mm	9182 St.

1. Single Color Design..... 0010



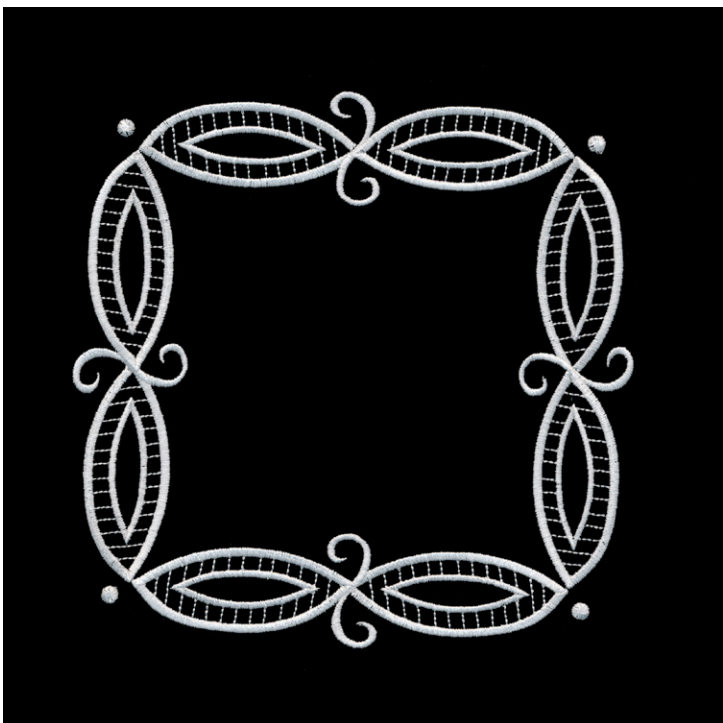
Note: Some designs in this collection may have been created using unique special stitches and/or techniques. To preserve design integrity when rescaling or rotating designs in your software, always rescale or rotate designs using the handles directly on-screen.



80294-61 Handcrafted Monogram Frame 1

Size Inches: Size mm: Stitch Count:
 10.01 X 10.01 in. 254.25 X 254.25 mm 15143 St.

- 1. Single Color Design..... 0010

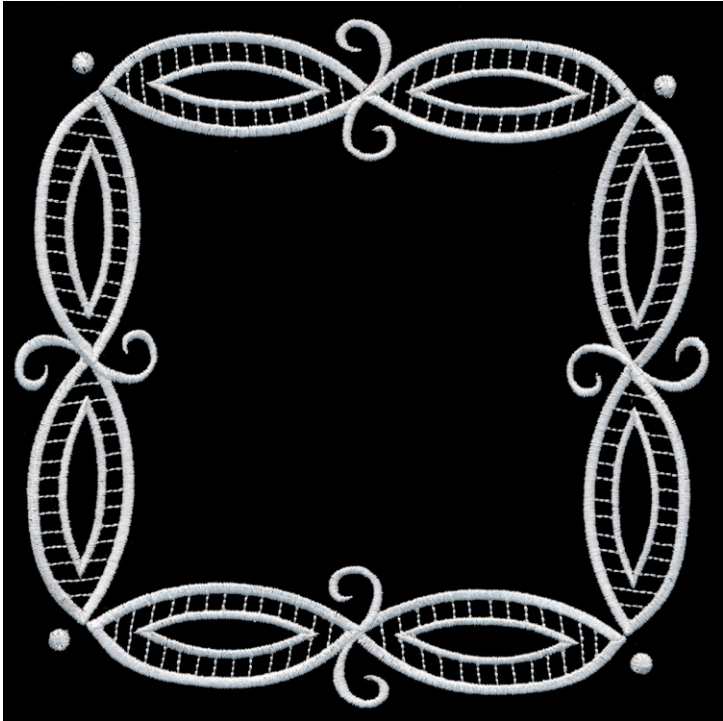


80294-62 Handcrafted Single Letter Frame 2

Size Inches: Size mm: Stitch Count:
 6.98 X 6.98 in. 177.29 X 177.29 mm 21261 St.

- 1. Single Color Design..... 0010

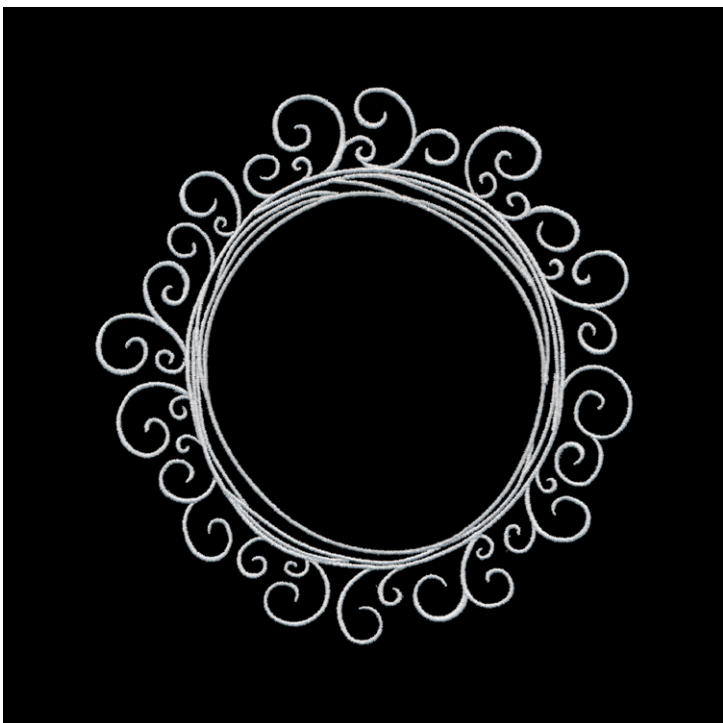
Note: Some designs in this collection may have been created using unique special stitches and/or techniques. To preserve design integrity when rescaling or rotating designs in your software, always rescale or rotate designs using the handles directly on-screen.



80294-63 Handcrafted Monogram Frame 2

Size Inches: Size mm: Stitch Count:
 10.01 X 10.01 in. 254.25 X 254.25 mm 30061 St.

- 1. Single Color Design..... 0010

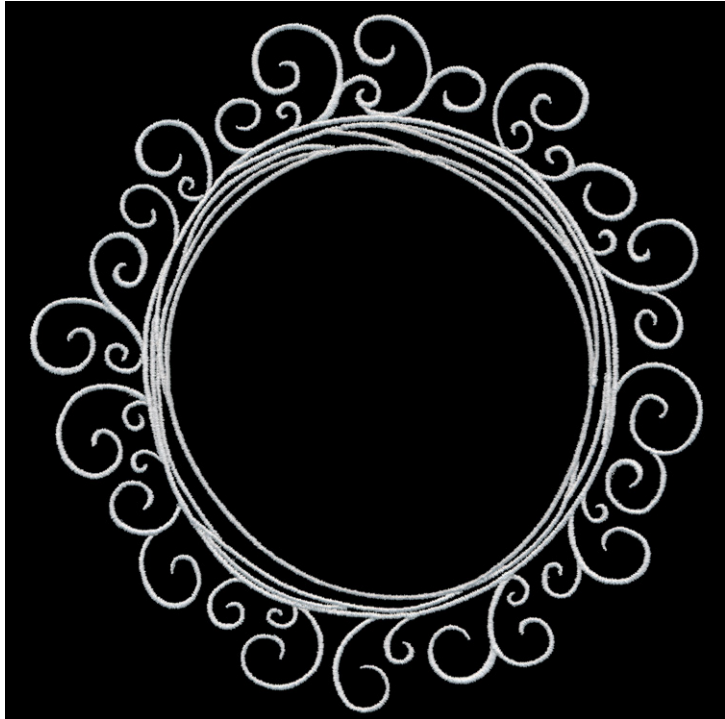


80294-64 Handcrafted Single Letter Frame 3

Size Inches: Size mm: Stitch Count:
 7.25 X 7.03 in. 184.15 X 178.56 mm 22375 St.

- 1. Single Color Design..... 0010

Note: Some designs in this collection may have been created using unique special stitches and/or techniques. To preserve design integrity when rescaling or rotating designs in your software, always rescale or rotate designs using the handles directly on-screen.



80294-65 Handcrafted Monogram Frame 3

Size Inches: Size mm: Stitch Count:
 10.01 X 9.69 in. 254.25 X 246.13 mm 30324 St.

- 1. Single Color Design..... 0010

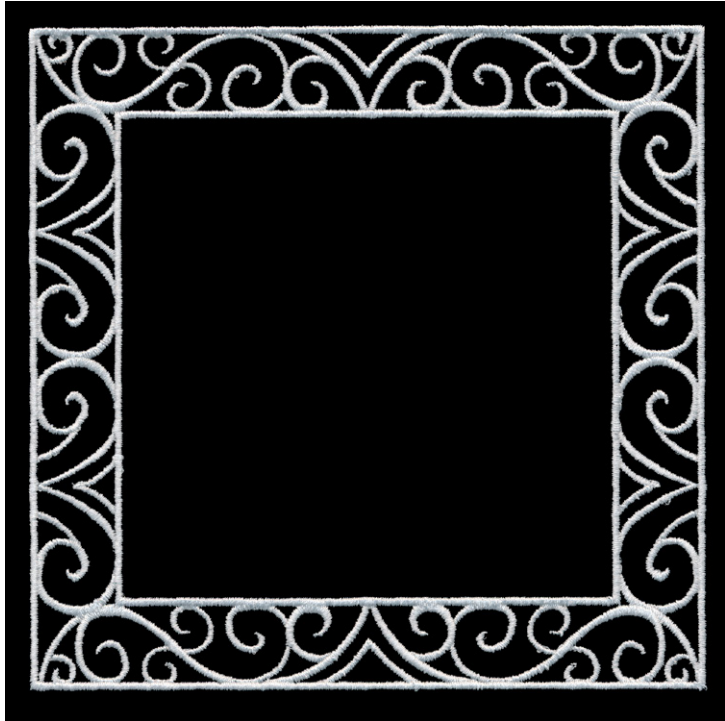


80294-66 Handcrafted Single Letter Frame 4

Size Inches: Size mm: Stitch Count:
 5.41 X 5.37 in. 137.41 X 136.40 mm 20094 St.

- 1. Single Color Design..... 0010

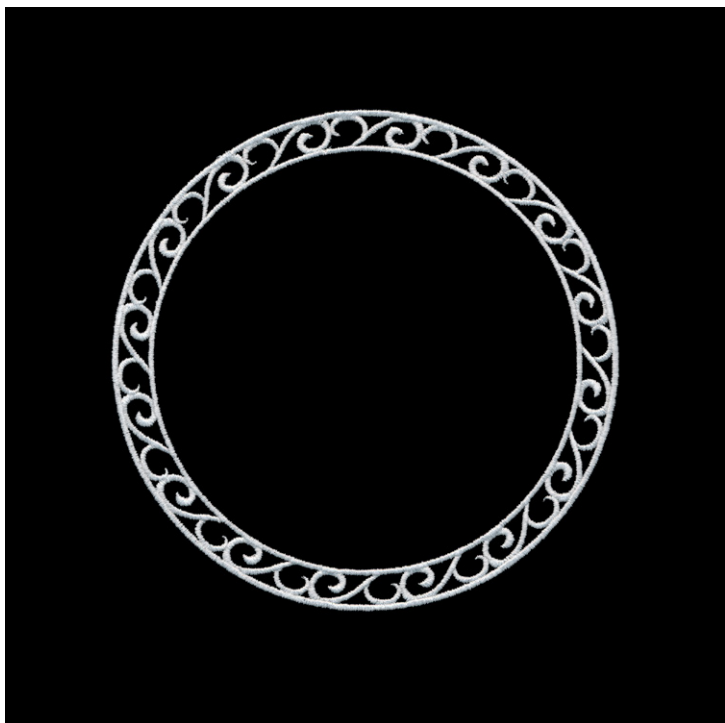
Note: Some designs in this collection may have been created using unique special stitches and/or techniques. To preserve design integrity when rescaling or rotating designs in your software, always rescale or rotate designs using the handles directly on-screen.



80294-67 Handcrafted Monogram Frame 4

Size Inches: Size mm: Stitch Count:
 9.01 X 8.95 in. 229.85 X 227.33 mm 32413 St.

- 1. Single Color Design..... 0010

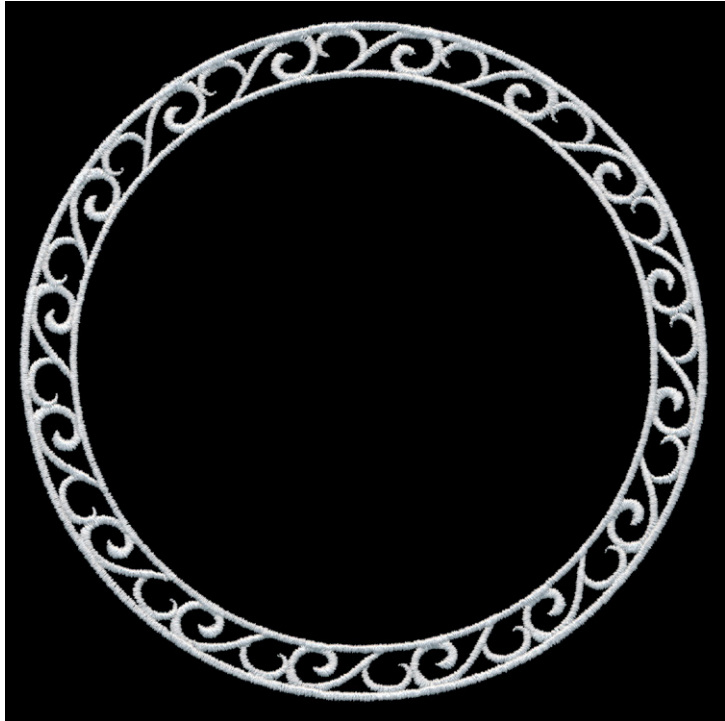


80294-68 Handcrafted Single Letter Frame 5

Size Inches: Size mm: Stitch Count:
 5.85 X 5.85 in. 148.59 X 148.59 mm 13432 St.

- 1. Single Color Design..... 0010

Note: Some designs in this collection may have been created using unique special stitches and/or techniques. To preserve design integrity when rescaling or rotating designs in your software, always rescale or rotate designs using the handles directly on-screen.



80294-69 Handcrafted Monogram Frame 5

Size Inches: Size mm: Stitch Count:
 8.01 X 8.01 in. 203.45 X 203.45 mm 17976 St.

- 1. Single Color Design..... 0010



80294-70 Handcrafted Single Letter Frame 6

Size Inches: Size mm: Stitch Count:
 8.00 X 7.65 in. 203.20 X 194.31 mm 27071 St.

- 1. Single Color Design..... 0010

Note: Some designs in this collection may have been created using unique special stitches and/or techniques. To preserve design integrity when rescaling or rotating designs in your software, always rescale or rotate designs using the handles directly on-screen.



80294-71 Handcrafted Monogram Frame 6

Size Inches: Size mm: Stitch Count:
 10.01 X 9.56 in. 254.25 X 242.82 mm 35292 St.

- 1. Single Color Design..... 0010



80294-72 Act of Kindness

Size Inches: Size mm: Stitch Count:
 6.53 X 7.97 in. 165.86 X 202.44 mm 22615 St.

- 1. Pink Lettering 2152
- 2. Blue Lettering 4610
- 3. Light Blue Shading 4752
- 4. Purple Shading 2810
- 5. Light Purple Shading 2830
- 6. White Lettering & Hearts 0010

Note: Some designs in this collection may have been created using unique special stitches and/or techniques. To preserve design integrity when rescaling or rotating designs in your software, always rescale or rotate designs using the handles directly on-screen.

80294-73 Be Silly

Size Inches: Size mm: Stitch Count:
8.00 X 8.62 in. **203.20 X 218.95 mm** **34198 St.**

- 1. White Lettering & Hearts 0010
- 2. Light Pink Lettering..... 2160
- 3. Dark Pink Hearts & Swirls 2152



80294-74 Dream Big

Size Inches: Size mm: Stitch Count:
5.87 X 10.00 in. **149.10 X 254.00 mm** **31935 St.**

- 1. Hoop..... 4610
- 2. Hoop Shading..... 4752
- 3. Weave 0010
- 4. Light Blue Letter Shading 4752
- 5. Light Blue Beads & Feather Shading 4752
- 6. White Letter Shading..... 0010
- 7. White Feather Shading..... 0010
- 8. Pink Beads 2152
- 9. Dark Blue Beads 4610



Note: Some designs in this collection may have been created using unique special stitches and/or techniques. To preserve design integrity when rescaling or rotating designs in your software, always rescale or rotate designs using the handles directly on-screen.



80294-75 Everything

Size Inches: Size mm: Stitch Count:
 7.43 X 8.95 in. 188.72 X 227.33 mm 27188 St.

	1. Dark Green Shading.....	5510
	2. Light Green Shading	5610
	3. Dandelions	0010
	4. Light Blue Letter Shading	4752
	5. White Lettering	0010
	6. Pink Swirls.....	2152



80294-76 The Future

Size Inches: Size mm: Stitch Count:
 8.00 X 9.75 in. 203.20 X 247.65 mm 42510 St.

	1. White Lettering	0010
	2. Blue Lettering	3331
	3. Gray Cloud Shading	0111
	4. Dark Blue Ladder Shading	3622
	5. Light Blue Ladder Shading	3331
	6. White Cloud Shading.....	0010

MATERIALS



Stabilizer

- StabilStick Tearaway stabilizer
- OESD TearAway Tape

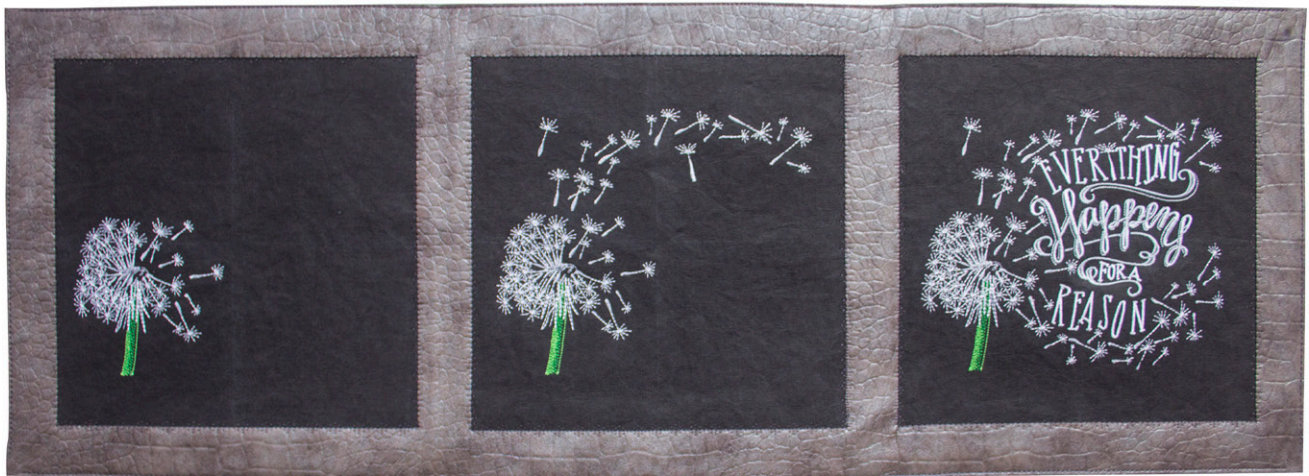
Supplies

- 1 yard Black Kraft-Tex (18" x 36"), cut into 3 - 11" x 11" squares
- 1 yard Faux Leather (36" x 45")
- Batting – 18" x 45"
- Chalk marker
- Maxi hoop or larger
- Editing Software
- 505 Temporary Spray Adhesive (optional)

Isacord Thread Colors

0010 Silky White
0111 Whale
2152 Heather Pink
2160 Iced Pink
2810 Orchid
2830 Wild Iris
3331 Cadet Blue
3622 Imperial Blue
4610 Deep Aqua
4752 Vintage Blue
5510 Emerald
5610 Bright Mint

Dandelion Wall Art



INSTRUCTIONS



STEP 1

- Mark the center of each Kraft-Tex square using a chalk marker.



STEP 2

- Hoop StabilStick TearAway stabilizer paper side up and score paper inside of hoop. Tear paper away to expose sticky side of stabilizer.



STEP 3

- Position one Kraft-Tex square in center of hoop using marks and/or hoop template.

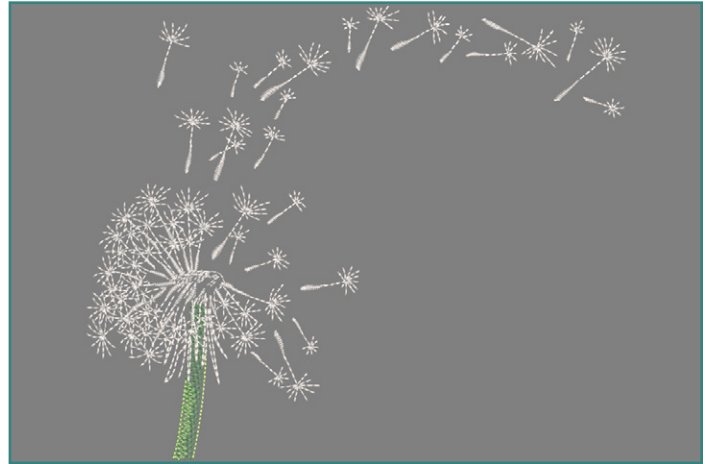


INSTRUCTIONS



STEP 4

- In software, retrieve pattern 80294-75. Remove bottom flying dandelion pieces and words. Save as a different file name than original, i.e. 80294-75a.



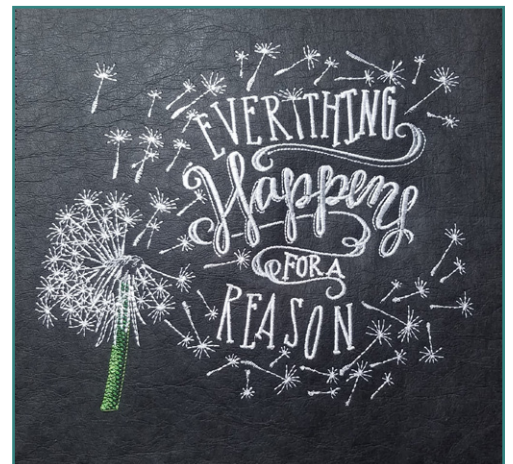
STEP 5

- While second file is still retrieved, remove top flying dandelion pieces. This will leave just the flower itself. Save as a different file name, i.e. 80294-75b.



STEP 6

- On machine, retrieve original file and stitch on first square, changing colors as suggested. Remove from hoop. Trim stabilizer to size of Kraft-Tex square.



INSTRUCTIONS



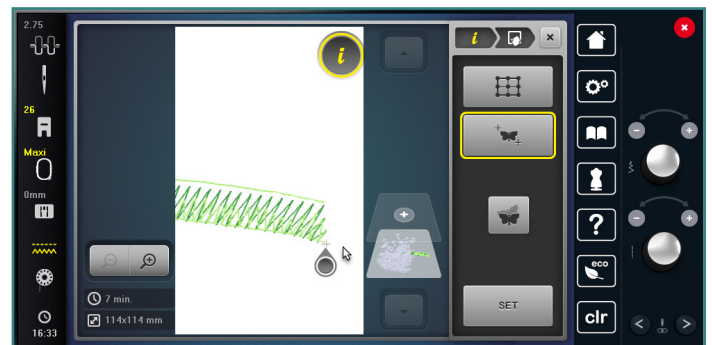
STEP 7

- Repeat Steps 2 and 3. Stitch second design created in step 4 (80294-75a). Do not remove from hoop.



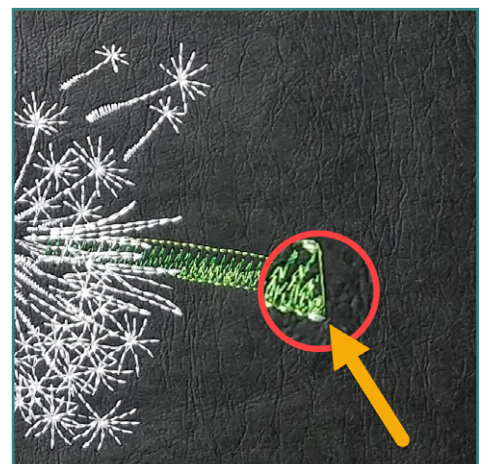
STEP 8

- While second design is still in hoop and attached to machine, retrieve last design created in step 5 (80294-75b). Using the Pinpoint Placement option on the machine, touch below the stem on flower (to the right, if the design has been rotated to fit the hoop).



STEP 9

- Using Stitch Width and Stitch Length knobs to move the hoop until the needle is over the same stitch on the design in the hoop. Click on the Set button. Close the Pinpoint Placement tool.
- Note - When a design is opened, it automatically centers in the hoop. This design should stitch to the left side of the square in the same place it stitched in the first two designs.



INSTRUCTIONS



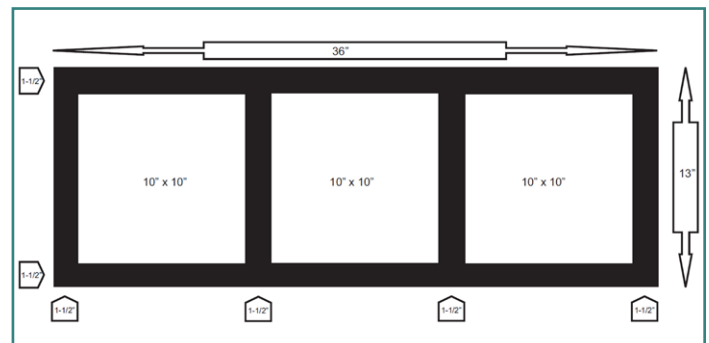
STEP 10

- Once the design is lined up in the correct position, remove the hoop from the machine and remove design from hoop. Trim stabilizer to size of Kraft-Tex square.
- Hoop another piece of StabilStick and center last Kraft-Tex square in hoop. Stitch last design that was positioned in Step 8. Remove from hoop and trim stabilizer to size of Kraft-Tex square.



STEP 11

- Cut the faux leather in half to create two pieces 18" x 45". Put one piece aside; it is the backing for the wall-hanging.
- Trim the other piece as shown on the diagram. Cutting the squares from the inside areas creates frames for the Kraft-Tex blocks.



STEP 12

- Tape design blocks to backside of frame created in step 12 using tearaway tape. See picture of completed projects for order. Layer backing, batting and top together. Use a 505 spray, if desired. Using a decorative sewing stitch, topstitch around the blocks. Work from the center square out. Trim away the excess batting and backing. Edge stitch around outside edge of wall-hanging to finish. Hang and enjoy! Or, it may also be used as an inspirational table runner.

