

#80314

- 10 classic embroidery designs
- 10 applique designs
- Fits hoop sizes 6" x 10" and larger



20
DESIGNS

Lepidopterrific

by **Granny's Legacy**
& **Wooly Mammoth LLC**

THREAD LIST



Isacord Thread Colors

0015 White
 0020 Black
 0310 Yellow
 0520 Daffodil
 0608 Sunshine

0722 Khaki
 0761 Oat
 0934 Fawn
 1055 Bark
 1115 Copper

1312 Burnt Orange
 1334 Spice
 3713 Cornflower Blue
 6141 Spring Green

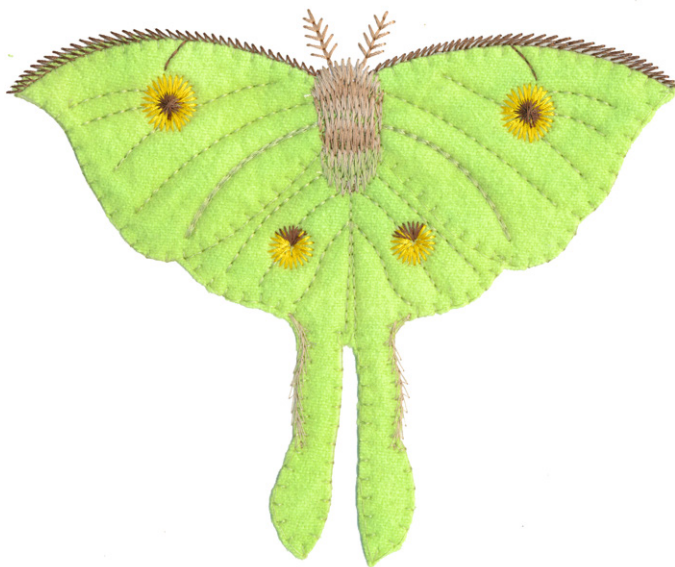
DESIGNS









Note: Some designs in this collection may have been created using unique special stitches and/or techniques. To preserve design integrity when rescaling or rotating designs in your software, always rescale or rotate designs using the handles directly on-screen.

*Fabric Required

80314-01 Moth Applique 1

Size Inches: Size mm: Stitch Count:
6.80 X 5.55 in. **172.7 X 141.0 mm** **4419 St.**



	1. Green Fabric Placement Stitch	6141
	2. Tackdown and Blanket Stitch	6141
	3. Green Wing Detail	6141
	4. Yellow Detail	0608
	5. Dark Brown Detail	1055
	6. Light Brown Detail	0934
	7. Tan Detail	0761
	8. Green Body Detail	6141

Note: Some designs in this collection may have been created using unique special stitches and/or techniques. To preserve design integrity when rescaling or rotating designs in your software, always rescale or rotate designs using the handles directly on-screen.

*Fabric Required

80314-02 Butterfly Applique 1

Size Inches: Size mm: Stitch Count:
 5.74 X 4.21 in. 145.8 X 106.9 mm 14316 St.



- 1. Yellow Fabric Placement Stitch 0310
- 2. Tackdown and Blanket Stitch 0310
- 3. Yellow Inner Wing Detail..... 0310
- 4. Black Detail 0020
- 5. Yellow Outer Wing Detail..... 0310
- 6. Blue Detail 3713
- 7. Copper Detail 1115

*Fabric Required

80314-03 Butterfly Applique 2

Size Inches: Size mm: Stitch Count:
 5.40 X 3.76 in. 137.2 X 95.5 mm 3846 St.



- 1. Black Fabric Placement Stitch..... 0020
- 2. Tackdown and Blanket Stitch 0020
- 3. Black Detail 0020
- 4. Yellow Detail..... 0310
- 5. Blue Detail 3713
- 6. Copper Detail 1115

Note: Some designs in this collection may have been created using unique special stitches and/or techniques. To preserve design integrity when rescaling or rotating designs in your software, always rescale or rotate designs using the handles directly on-screen.

*Fabric Required

80314-04 Butterfly Applique 3

Size Inches: Size mm: Stitch Count:
 5.51 X 3.01 in. 140.0 X 76.5 mm 12978 St.



- 1. Khaki Wing Detail 0722
- 2. Brown Fabric Placement Stitch 1055
- 3. Tackdown and Blanket Stitch 1055
- 4. Dark Brown Detail 1055
- 5. Copper Detail 1115
- 6. Tan Body and Edge Detail..... 0761
- 7. Black Wing Detail 0020
- 8. Orange Body Detail 1312
- 9. White Detail 0015
- 10. Tan Wing Detail 0761
- 11. Black Dots 0020

*Fabric Required

80314-05 Moth Applique 2

Size Inches: Size mm: Stitch Count:
 5.27 X 2.93 in. 133.9 X 74.4 mm 8647 St.



- 1. Orange Fabric Placement Stitch 1115
- 2. Tackdown and Blanket Stitch 1115
- 3. Black Detail 0020
- 4. White Dots..... 0015
- 5. Orange Wing Detail 1115

Note: Some designs in this collection may have been created using unique special stitches and/or techniques. To preserve design integrity when rescaling or rotating designs in your software, always rescale or rotate designs using the handles directly on-screen.

*Fabric Required

80314-06 Butterfly Applique 4

Size Inches: Size mm: Stitch Count:
5.26 X 2.92 in. **133.6 X 74.2 mm** **9175 St.**



- 1. Yellow Outer Wing Detail..... 0310
- 2. Black Fabric Placement Stitch..... 0020
- 3. Tackdown and Blanket Stitch 0020
- 4. Black Detail 0020
- 5. Yellow Detail..... 0310
- 6. Light Yellow Detail 0520
- 7. Blue Dots..... 3713

*Fabric Required

80314-07 Butterfly Applique 5

Size Inches: Size mm: Stitch Count:
2.05 X 3.18 in. **52.1 X 80.8 mm** **1242 St.**



- 1. Yellow Fabric Placement Stitch 0310
- 2. Tackdown and Blanket Stitch 0310
- 3. Black Detail 0020

Note: Some designs in this collection may have been created using unique special stitches and/or techniques. To preserve design integrity when rescaling or rotating designs in your software, always rescale or rotate designs using the handles directly on-screen.

*Fabric Required

80314-08 Butterfly Applique 6

Size Inches:	Size mm:	Stitch Count:
1.97 X 3.21 in.	50.0 X 81.5 mm	1062 St.



- 1. White Fabric Placement Stitch 0761
- 2. Tackdown and Blanket Stitch 0761
- 3. Tan Detail 0761
- 4. Black Detail 0020

*Fabric Required

80314-09 Butterfly Applique 7

Size Inches:	Size mm:	Stitch Count:
2.21 X 2.98 in.	56.1 X 75.7 mm	1834 St.



- 1. Blue Fabric Placement Stitch 3713
- 2. Tackdown and Blanket Stitch 3713
- 3. Blue Detail 3713
- 4. Black Detail 0020

Note: Some designs in this collection may have been created using unique special stitches and/or techniques. To preserve design integrity when rescaling or rotating designs in your software, always rescale or rotate designs using the handles directly on-screen.

*Fabric Required

80314-10 Butterfly Applique 8

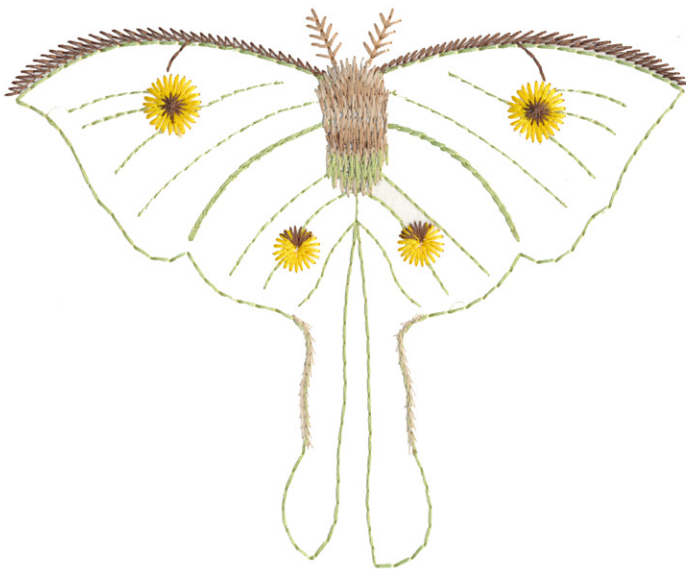
Size Inches: Size mm: Stitch Count:
1.91 X 3.01 in. **48.5 X 76.5 mm** **2588 St.**



- 1. Black Fabric Placement Sitch..... 0020
- 2. Tackdown and Blanket Stitch 0020
- 3. Orange Wing Detail 1334
- 4. Copper Detail 1115
- 5. Black Detail and Body 0020
- 6. Tan Dots 0761

80314-11 Moth Linework 1

Size Inches: Size mm: Stitch Count:
6.80 X 5.54 in. **172.7 X 140.7 mm** **4554 St.**

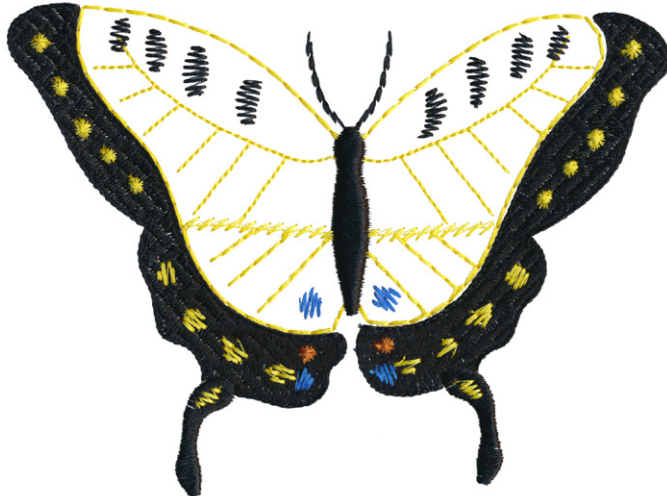


- 1. Green Wing Detail 6141
- 2. Yellow Detail 0608
- 3. Dark Brown Detail 1055
- 4. Light Brown Detail 0934
- 5. Tan Detail 0761
- 6. Green Body Detail 6141

Note: Some designs in this collection may have been created using unique special stitches and/or techniques. To preserve design integrity when rescaling or rotating designs in your software, always rescale or rotate designs using the handles directly on-screen.

80314-12 Butterfly Linework 1

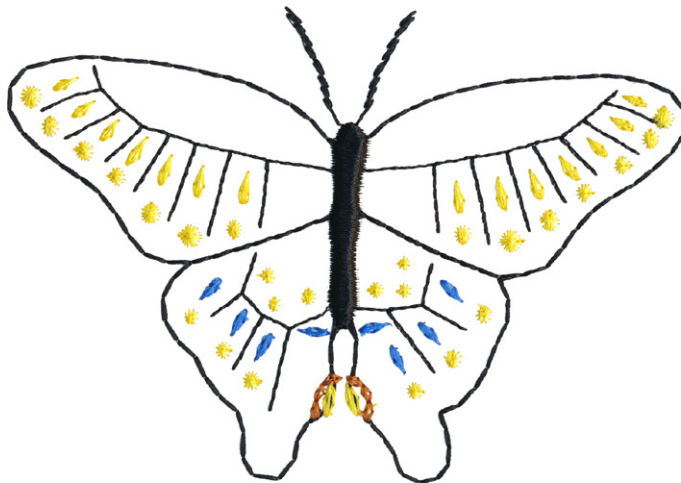
Size Inches: Size mm: Stitch Count:
 5.75 X 4.23 in. 146.1 X 107.4 mm 15954 St.



- 1. Yellow Outline/Inner Wing Detail 0310
- 2. Black Detail 0020
- 3. Yellow Outer Wing Detail 0310
- 4. Blue Detail 3713
- 5. Copper Detail 1115

80314-13 Butterfly Linework 2

Size Inches: Size mm: Stitch Count:
 5.38 X 3.75 in. 136.7 X 95.3 mm 4054 St.



- 1. Black Detail 0020
- 2. Yellow Detail 0310
- 3. Blue Detail 3713
- 4. Copper Detail 1115

Note: Some designs in this collection may have been created using unique special stitches and/or techniques. To preserve design integrity when rescaling or rotating designs in your software, always rescale or rotate designs using the handles directly on-screen.

80314-14 Butterfly Linework 3

Size Inches: Size mm: Stitch Count:
5.51 X 3.01 in. **140.0 X 76.5 mm** **12835 St.**



	1. Khaki Wing Detail	0722
	2. Dark Brown Detail	1055
	3. Copper Detail	1115
	4. Tan Body and Edge Detail.....	0761
	5. Black Wing Detail	0020
	6. Orange Body Detail	1312
	7. White Detail	0015
	8. Tan Wing Detail	0761
	9. Black Dots	0020

80314-15 Moth Linework 2

Size Inches: Size mm: Stitch Count:
5.24 X 2.93 in. **133.1 X 74.4 mm** **11757 St.**

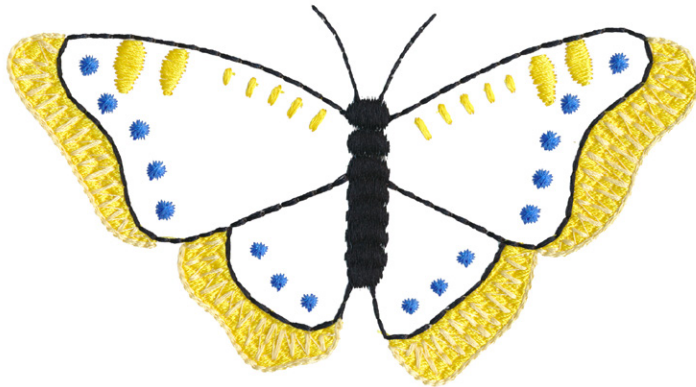


	1. Copper Wing Detail	1115
	2. Black Detail	0020
	3. White Dots.....	0015
	4. Copper Wing Detail	1115

Note: Some designs in this collection may have been created using unique special stitches and/or techniques. To preserve design integrity when rescaling or rotating designs in your software, always rescale or rotate designs using the handles directly on-screen.

80314-16 Butterfly Linework 4

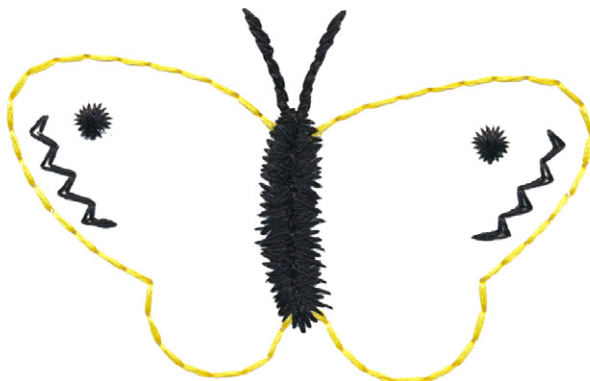
Size Inches: Size mm: Stitch Count:
 5.26 X 2.92 in. 133.6 X 74.2 mm 9133 St.



 1. Yellow Outer Wing Detail.....	0310
 2. Black Detail	0020
 3. Yellow Detail.....	0310
 4. Light Yellow Wing Detail	0520
 5. Blue Dots.....	3713

80314-17 Butterfly Linework 5

Size Inches: Size mm: Stitch Count:
 2.05 X 3.19 in. 52.1 X 81.0 mm 1336 St.



 1. Yellow Detail.....	0310
 2. Black Detail	0020

Note: Some designs in this collection may have been created using unique special stitches and/or techniques. To preserve design integrity when rescaling or rotating designs in your software, always rescale or rotate designs using the handles directly on-screen.

80314-18 Butterfly Linework 6

Size Inches:	Size mm:	Stitch Count:
1.98 X 3.19 in.	50.3 X 81.0 mm	1136 St.

- 1. Tan Detail 0761
- 2. Black Detail 0020



80314-19 Butterfly Linework 7

Size Inches:	Size mm:	Stitch Count:
2.21 X 2.98 in.	56.1 X 75.7 mm	1946 St.

- 1. Blue Detail 3713
- 2. Black Detail 0020



Note: Some designs in this collection may have been created using unique special stitches and/or techniques. To preserve design integrity when rescaling or rotating designs in your software, always rescale or rotate designs using the handles directly on-screen.

80314-20 Butterfly Linework 8

Size Inches: Size mm: Stitch Count:
1.91 X 2.98 in. **48.5 X 75.7 mm** **2600 St.**



■ 1. Black Wing Outline	0020
■ 2. Orange Wing Detail	1334
■ 3. Copper Detail	1115
■ 4. Black Detail and Body	0020
■ 5. Tan Dots	0761

COLLECTION SUPPLIES



Stabilizer

- Fusible Woven
- Applique Fuse and Fix
- StitchH2O
- **Note** - stabilizer for hooping will depend on project

Supplies

- TearAway Tape
- Isacord threads as per thread chart
- OESD Loop and Tail Wand (optional)

Fabric

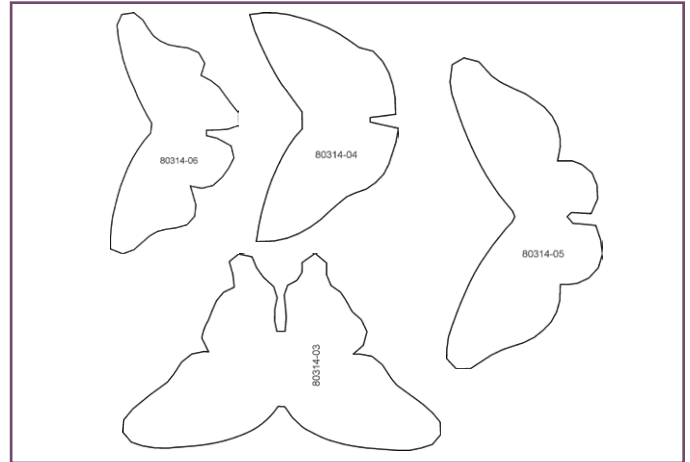
- Scraps of wool or other fabric slightly larger than design (maximum size required 6" x 7")
- Background fabric per project hooped

INSTRUCTIONS



STEP 1 Print applique template

- Print a template of the design on the paper side of Applique Fuse and Fix. Since the template is fused to the back of the fabric, the template must be a mirror image. Alternatively, the template may be printed as is and the design mirror-imaged.



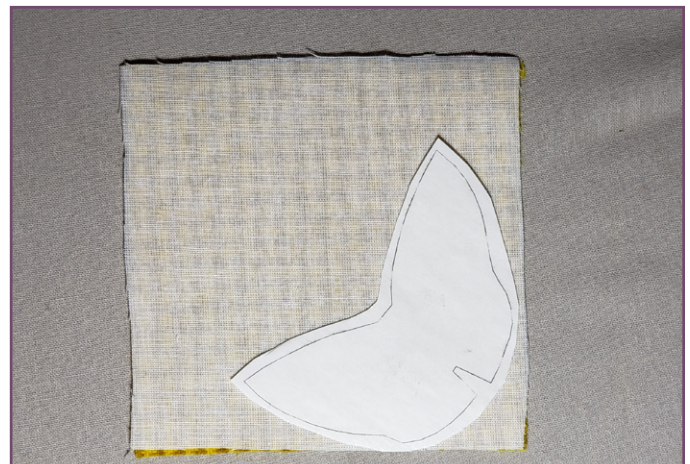
STEP 2 Prep applique fabric

- Fuse Fusible Woven to the back of the applique fabric with a medium warm iron.



STEP 3 Apply template

- Roughly cut out the Applique Fuse and Fix template about 1/4"-1/2" around the design. Fuse the template to the back of the applique fabric paper side up. Allow the medium hot iron to sit for 5 seconds then move as necessary. Allow to cool. The template should be completely fused to the fabric.



INSTRUCTIONS



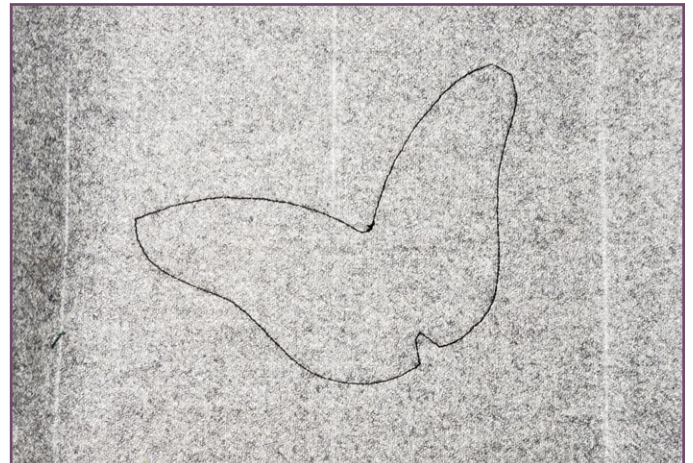
STEP 4 Cut out template

- Cut out the applique on the printed line. Set aside.



STEP 5 Stitch placement line

- Stitch the applique placement line.
- **Note** - On designs 80314-04 and 80314-06, the applique placement line is the second machine step (color change) in the design.



STEP 6 Prepare applique

- Score the paper on the back of the trimmed applique fabric. Peel off the paper to expose the adhesive surface.

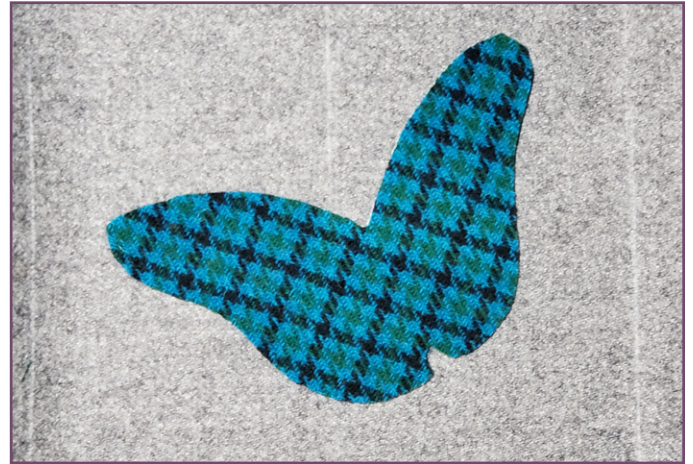


INSTRUCTIONS



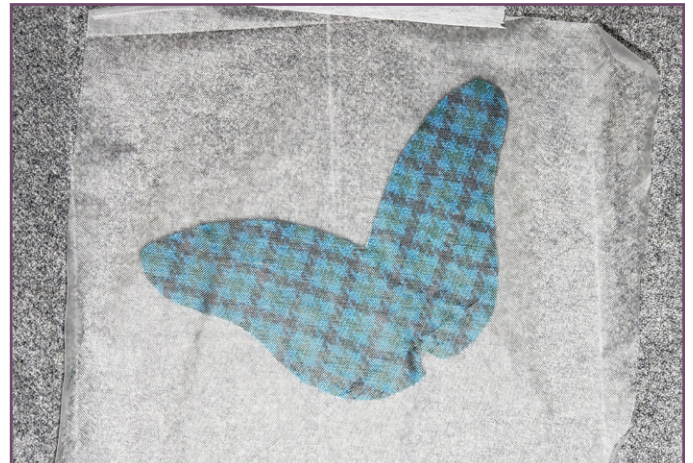
STEP 7 Apply the applique

- Position the applique on the placement line. The applique may be repositioned if necessary. The sticky surface will hold it in place during the tackdown/blanket stitch.



STEP 8 Apply topper

- Cut a piece of StitchH2O slightly larger than the design. Position over the design area and tape in place.



STEP 9 Stitch tackdown

- Stitch the next step, a blanket stitch which serves as the tackdown and finishing stitch for this application.



INSTRUCTIONS

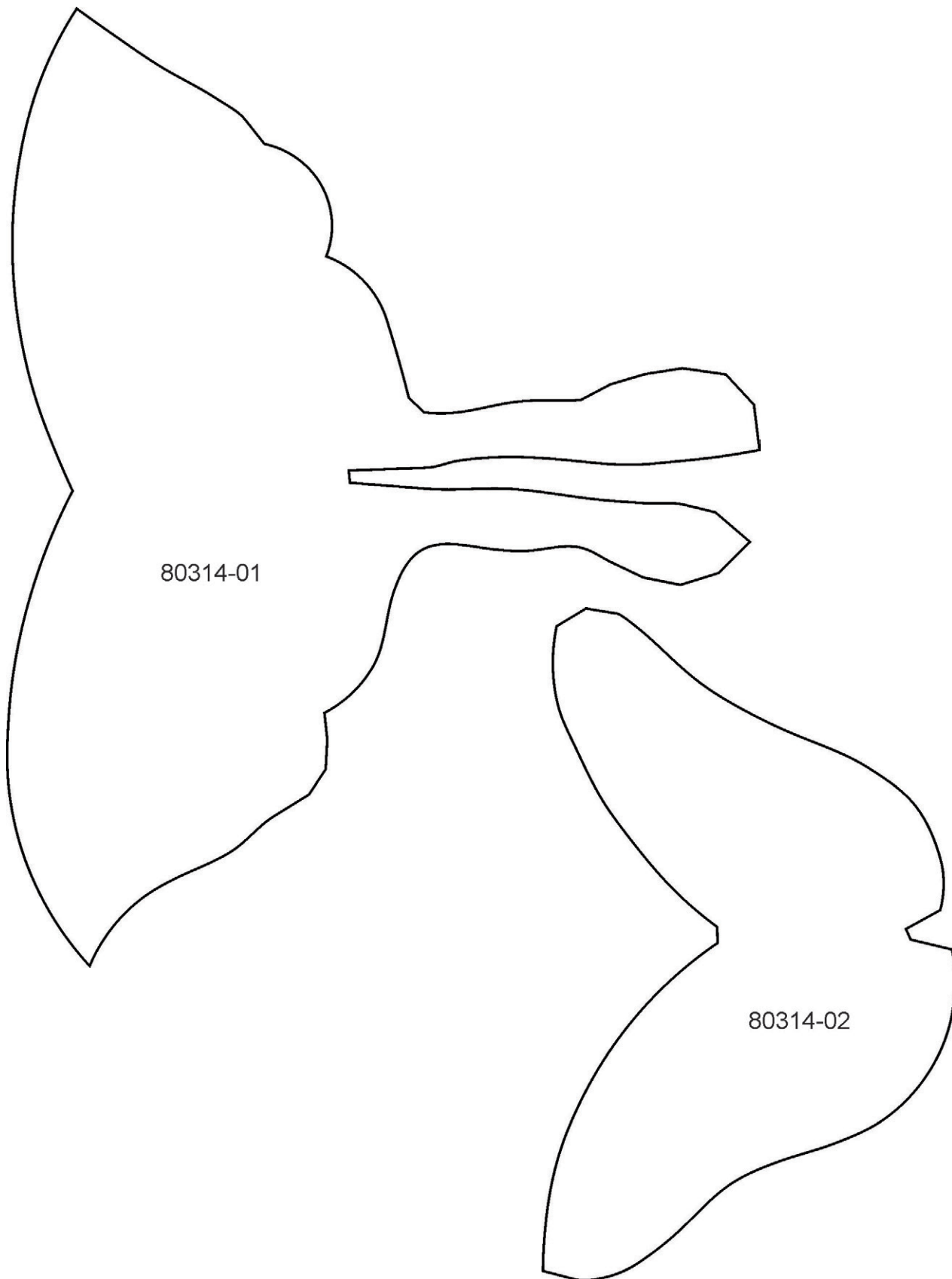


STEP 10 Finish

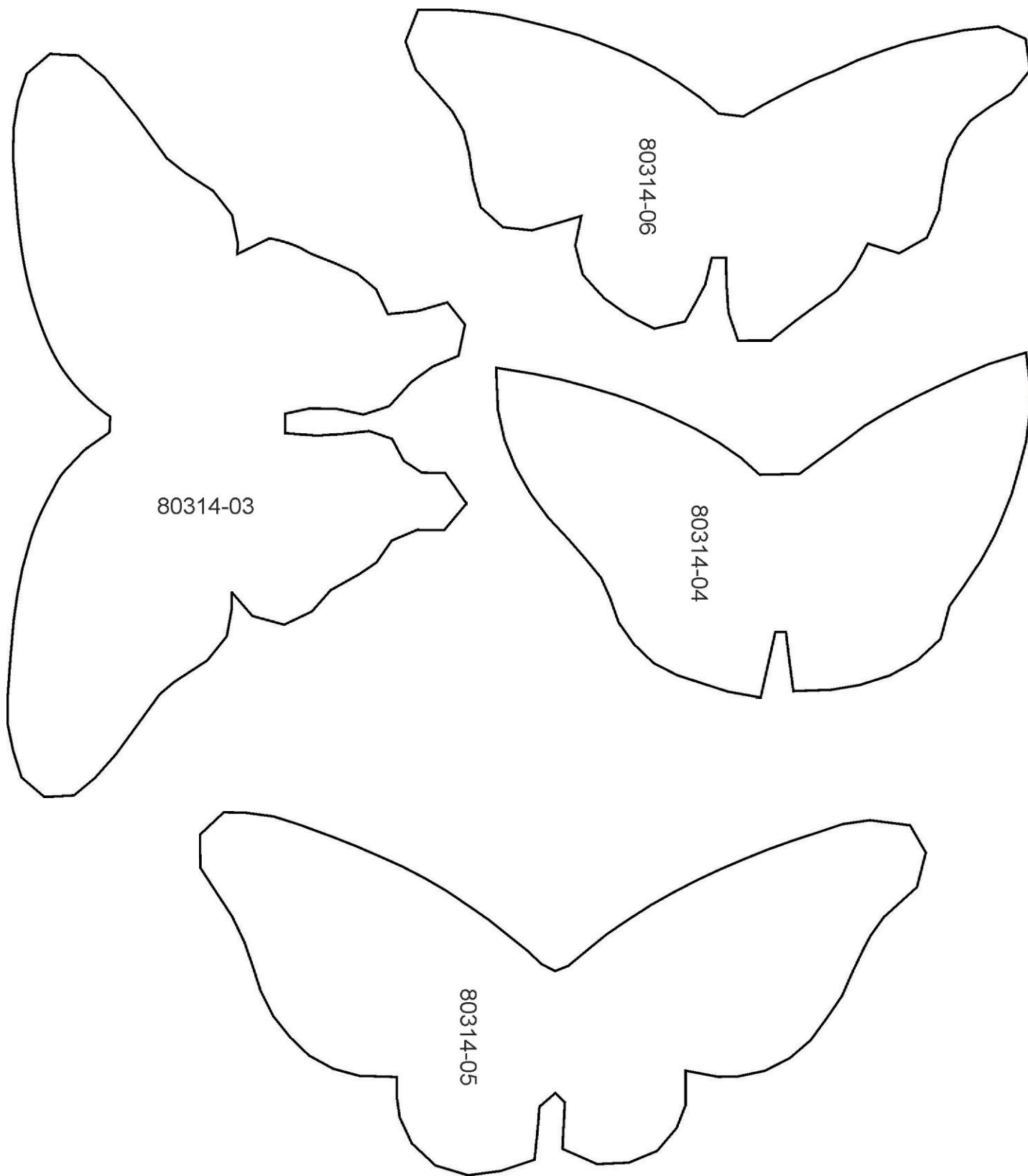
- Complete the design stitching, changing thread colors as required.
- Remove excess topping by gently pulling away for the design. Remove the remainder by rinsing in warm water or spritzing with water and blotting with a towel.



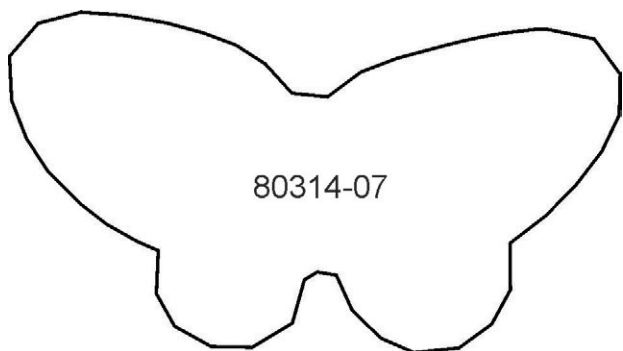
APPLIQUE PATTERNS



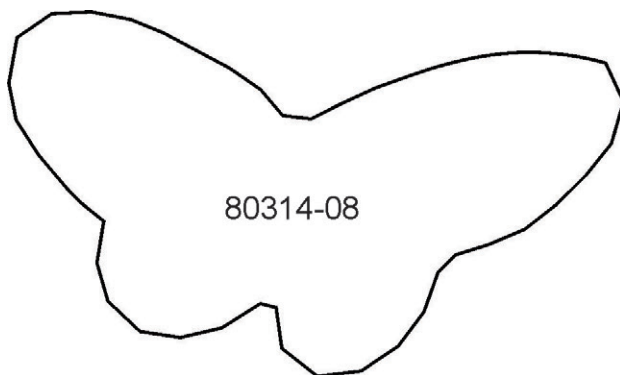
APPLIQUE PATTERNS



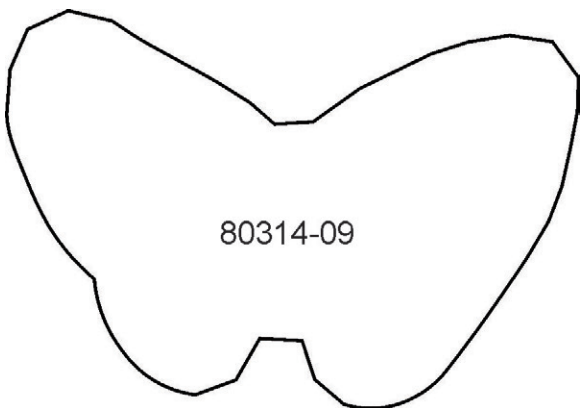
APPLIQUE PATTERNS



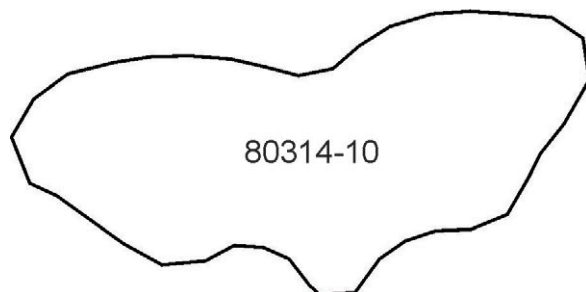
80314-07



80314-08

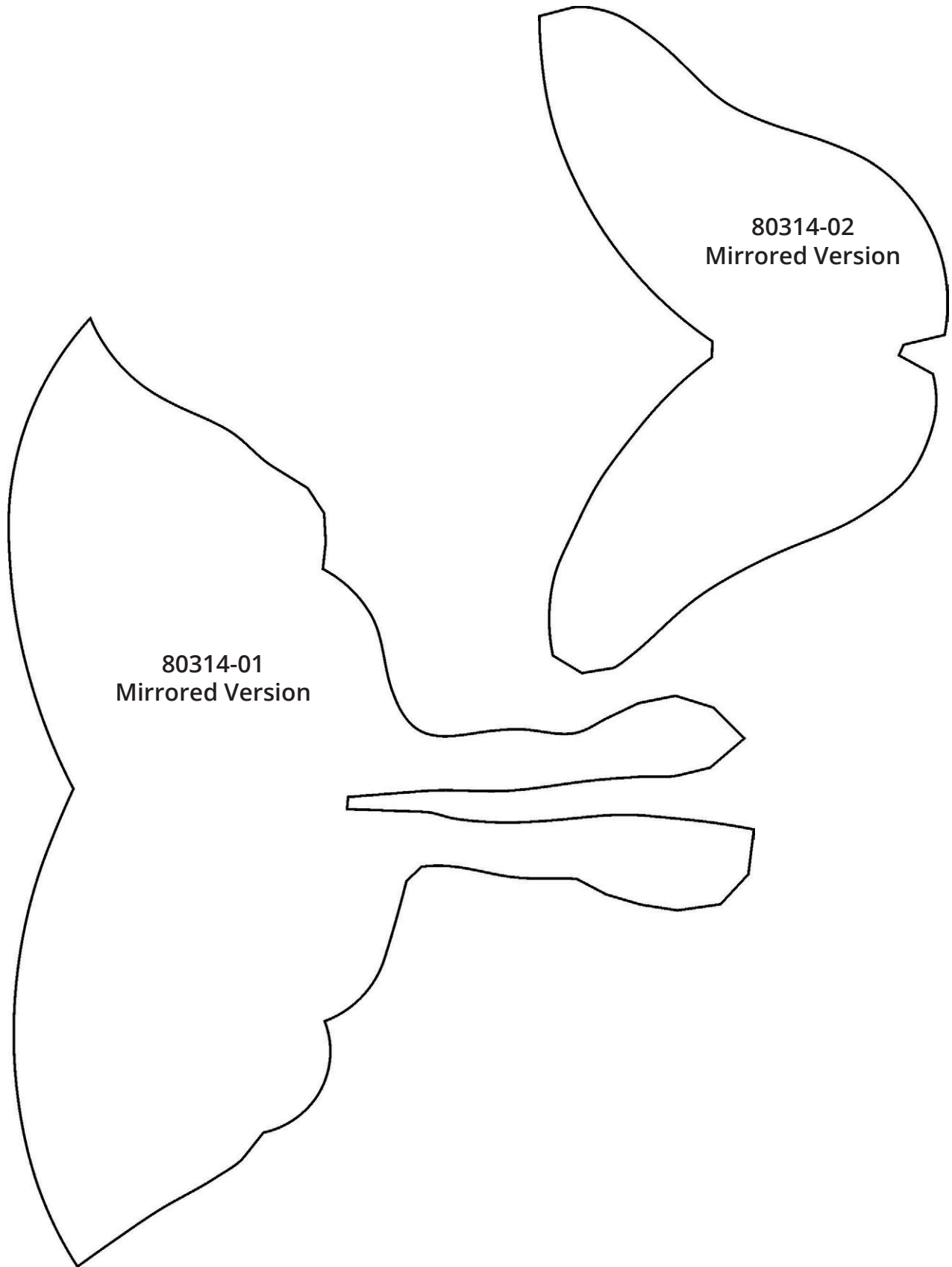


80314-09

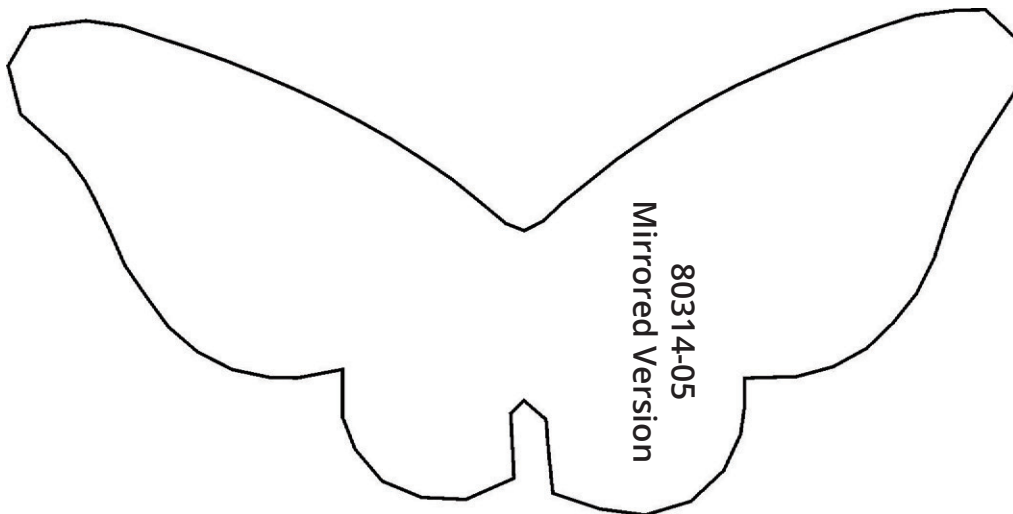
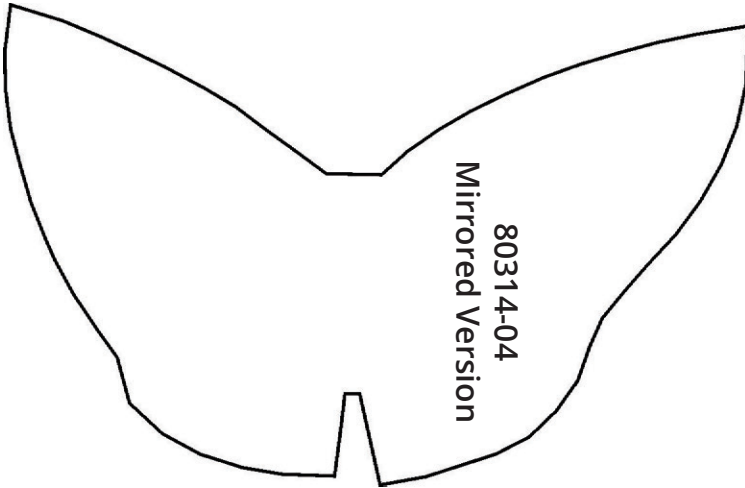
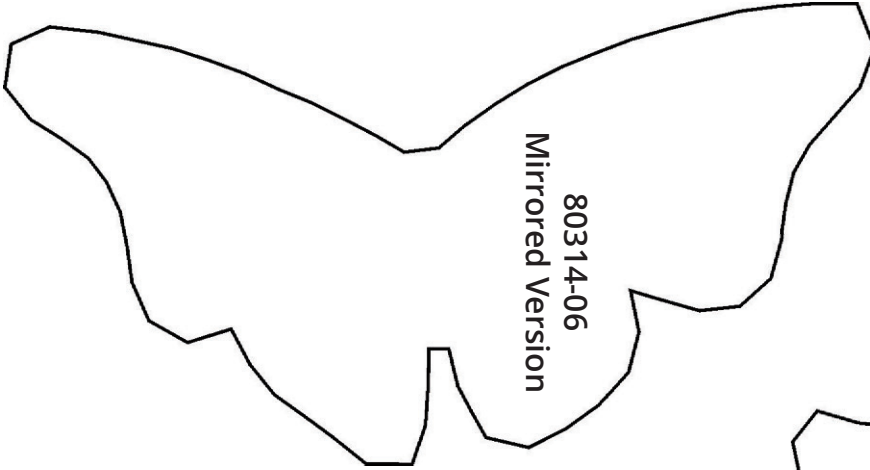


80314-10

MIRRORED PATTERNS



MIRRORED PATTERNS



MIRRORED PATTERNS

