

Spring Hummingbirds Tiling Scene by Dona Gelsinger



Collection No. 80367
1 Design/18 Files

MATERIALS



Isacord Thread Colors

0010 Silky White	2640 Frosted Plum
0020 Black	2912 Sugar Plum
0105 Ash Mist	3353 Light Midnight
0352 Marsh	3544 Sapphire
0704 Gold	3631 Tufts Blue
0761 Oat	4250 Snomoon
0763 Dark Rattan	5500 Limedrop
0874 Gravel	5513 Ming
1115 Copper	5613 Light Kelly
2155 Pink Tulip	5643 Green Dust
2160 Iced Pink	5740 Mint
2171 Blush	5933 Grasshopper
2520 Garden Rose	6043 Yellowgreen
2521 Fuschia	6071 Old Lace
2530 Rose	

Note: One spool of 1000 meter thread is adequate for the project unless otherwise noted.



MATERIALS



Stabilizers

- OESD Heavy Weight TearAway 15" roll
- OESD Ultra Clean and Tear TearAway 15" roll
- OESD Fusible Woven 15" roll- 2 rolls are required

Fabrics/Textiles

- 2.5 yards of cream cotton fabric for designs
- **For 3 Split Tiling Scenes:**
 - Batting (3) 12" x 24"
 - Backing 3/4 yard
 - Binding 1/2 yard, cut into 2 1/2" strips. 1.5 strips required per tiling scene

Note: Fabric yardage is based on a 11" x 15" hooping. Fabric and stabilizer amounts may vary depending on hoop size and number of tiles per hooping.
- **For 1 Tiling Scene:**
 - Batting 24" x 30"
 - Backing 3/4 yard
 - Binding 1/3 yard, cut 3 strips width of fabric x 2 1/2" strips, stitch together at 45° angle to create one long strip.

Notion & Tools

- OESD Grippy Grid
- OESD Expert Embroidery Tape TearAway
- OESD Expert Point and Press Tool
- OESD Perfect Embroidery Press Cloth
- 505 Temporary Spray Adhesive
- Ruler, rotary cutter, mat
- Contrasting bobbin thread (seam stitch only, may be different colors)
- Fabric marking pen
- Walking foot or Dual feed foot
- Embroidery Needle Sharp 75/11

Isacord Thread Colors

- Per thread chart



SUMMARY

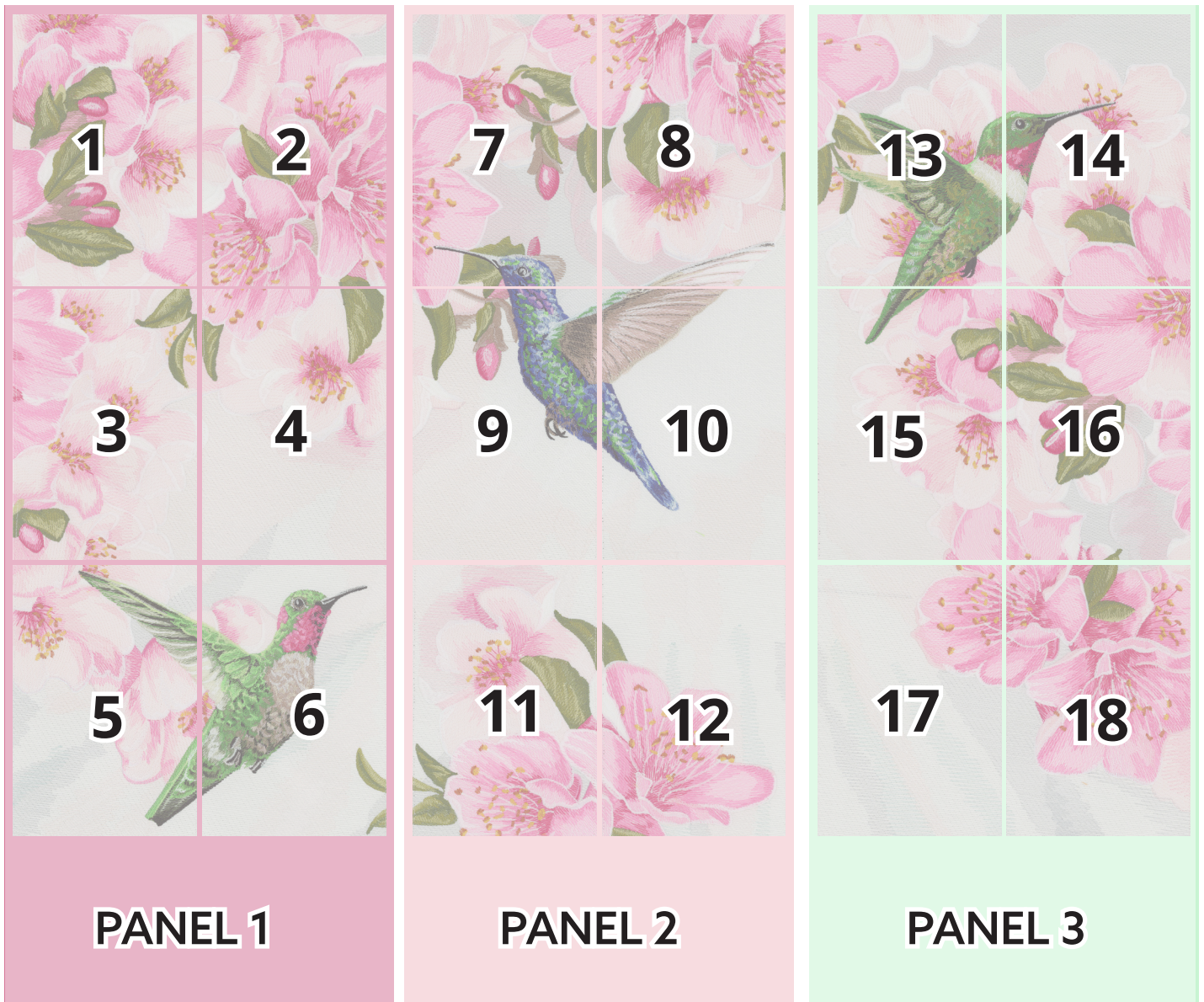
OESD™ PREMIER COLLECTION

Largest Design Size: 7.74" x 5.15"
Completed Tiling Scene Size: 22" x 28"



SUMMARY

3 Split Tiling Scenes (Triptych):
10" x 22"



EMBROIDERY

Notes:

Embroider one of each design file 80367-01 through 80367-18.

For each hooping, cut the following 11" x 15", or large enough to hoop:

1 layer of background fabric

1 layer of Fusible Woven

1 layer of Heavy Weight TearAway

1 layer of Ultra Clean and Tear TearAway

To economize on fabric, cut the fabric 15" wide (or the height of the hoop + 2") x the width of the fabric. Apply the stabilizers. Move the hoop down the length of the fabric as each block is stitched. Leave a minimum of 1.5" between the blocks.

Step 1

- Apply Fusible Woven to the back of the background fabric, per the product directions.
- Apply one layer of Heavy Weight TearAway and one layer of Ultra Clean and Tear to the wrong side of the background fabric with temporary spray adhesive.
- Hoop fabric and stabilizer.



□ Step 2

- Load the selected design into the machine.
- Example design is 80367-01.
- Thread the machine per the thread chart.
- Place the hoop on the machine.
- Stitch Machine Steps 1-13 per the thread chart, stopping before the last machine step.



□ Step 3

- The last color change in each block is called "Seam". This line is the guide when trimming and stitching the tiles together and needs to be highly visible on the back side of the tile. Stitch the top color in a thread that blends with the fabric, invisible thread, or water-soluble thread.
- For the bobbin, use a color which contrasts sharply with the back of the tile.

Note: Since the bobbin color doesn't have to be the same on each tile, this is a great time to use up partially wound bobbins.

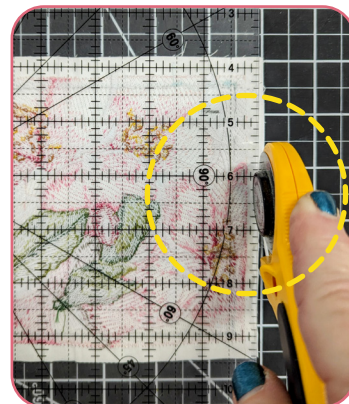
- Stitch the last Machine Step.



□ Step 4

- Remove the embroidery from the hoop.
- At the cutting mat, place the block right side down.
- Identify the "seam" stitch. Trim 1/2" inch out from the seam stitch, on all four sides, to create the seam allowance.

Note: Accuracy here will greatly facilitate the construction of the project.



□ Step 5

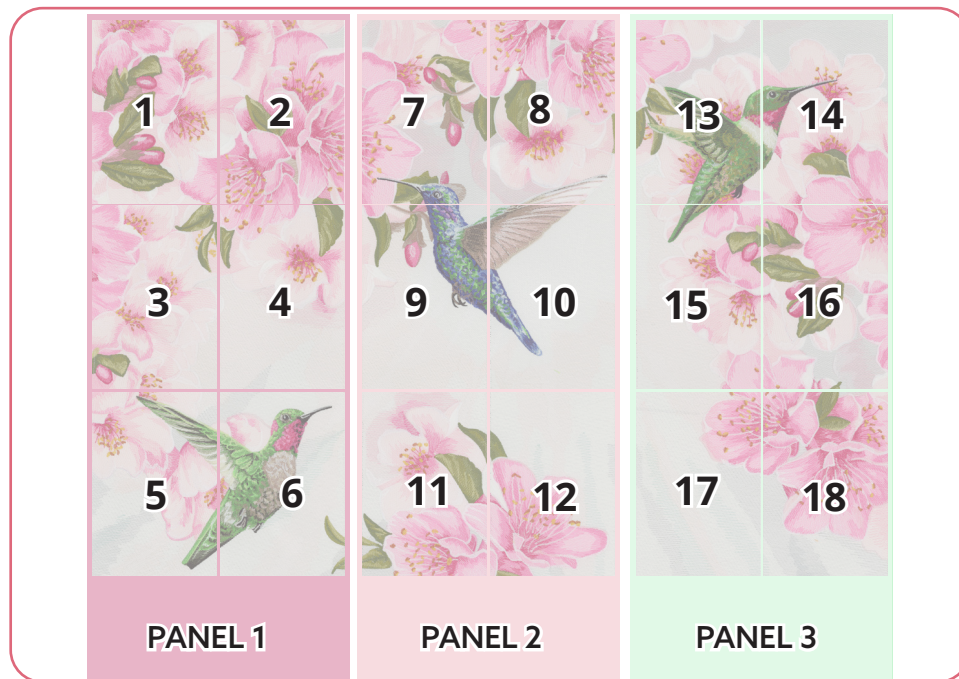
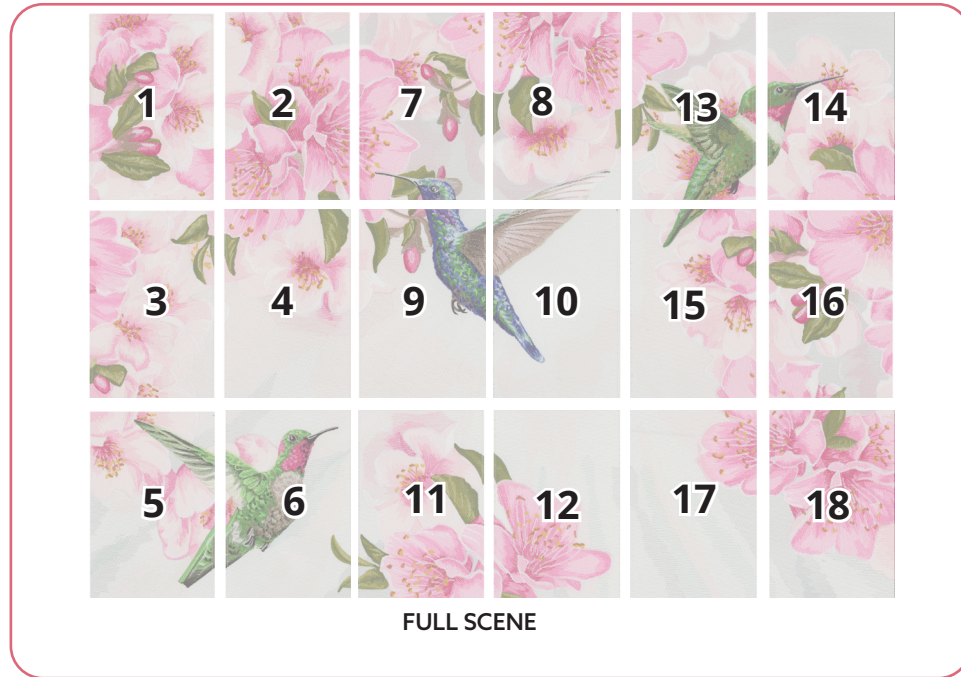
- Press each block face down on a Perfect Embroidery Press Cloth.
- Write the number of the block on the back so it is easily identified during construction! Use a pen or pencil that will not bleed through to the front side.



ASSEMBLY

Step 6

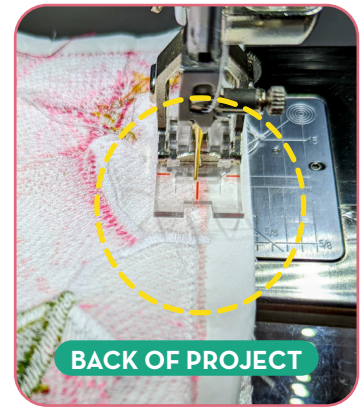
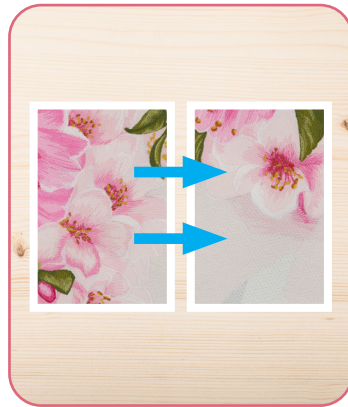
- Arrange the tiles in the layout for the scene.



ASSEMBLY

□ Step 7

- Stitch two adjacent tiles, right sides together; matching the right edge of Tile 1 to the left edge of Tile 2. Align the matching edges and stitch just inside of the seam line.
- Repeat for each row.
- 1-2, 3-4, 5-6, and continuing.



□ Step 8

- Press each seam open.
Note: If the seams do not come apart easily, press both seam allowances to one side using steam and a cotton or linen setting.
- While warm, open the seam allowance with the large ball of the Expert Point and Press Tool.
- Press again and allow to cool.
- Once cool, remove the excess stabilizer from the seam allowance.
- Do not remove excess stabilizer from inside the seam line.



ASSEMBLY

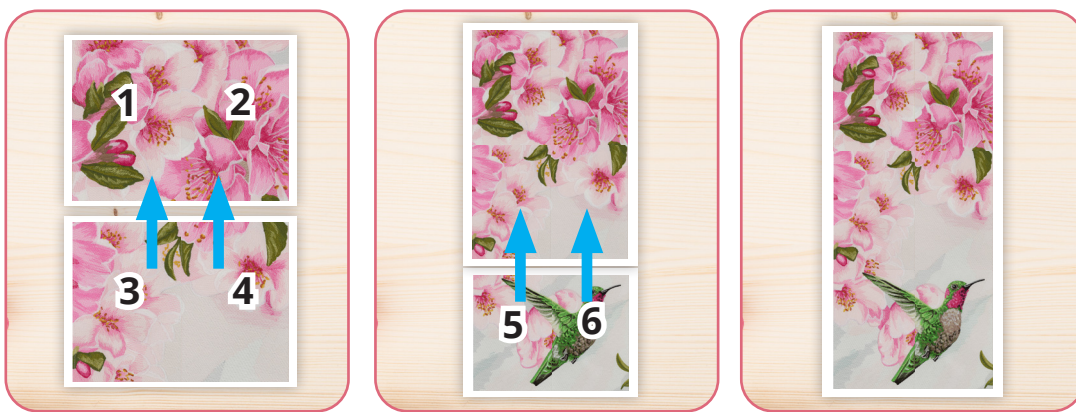
Step 9

- Layout the pressed rows.



Step 10

- Align the bottom of Row 1 (Tiles 1 and 2) with the top of Row 2 (Tiles 3 and 4).
- Place right sides together, matching seam allowances.
- Stitch just inside the seam line connecting each row. Press seams open. If the seams or major points of matching do not match up, try stitching that part first. Check for accuracy. Then stitch across the tiles.
- Align the bottom of Row 2 with the top of Row 3 (Tiles 5 and 6) and stitch together.



ASSEMBLY

□ Step 11

- Press and remove stabilizer from the seam allowances.



□ Step 12

- Repeat for Tiles 7 through 12 and Tiles 13 through 18.
Note: If you want the 3 columns to be sewn together to create one large tiling scene, sew the three columns together at this time.



ASSEMBLY

□ Step 13

- Cut batting and backing at least 2" larger than the tiling scene.
- Layer the backing (right side down), batting, and center the tiling scene (right side up).
- Spray baste all 3 layers with temporary spray adhesive.



□ Step 14

- Load the sewing machine with a thread color that blends with the scene or invisible thread.
- Stitch in the ditch where the tiles connect to attach the batting and backing to the top. For the best results use a walking foot or a dual feed foot.



ASSEMBLY

□ Step 15

- Trim 1/4" from the edge of the top through all three layers to square up the finished scene. Zigzag over the raw edges to join the edges together.
- Bind as desired.
- Your tiling scene is complete. Enjoy!

