

Butterfly Triptych

by Laurel Burch



Collection No. 80414
1 Design/12 Files

Isacord Thread Colors

0020 Black	1703 Poppy	3150 Stainless
0600 Citrus	2508 Hot Pink	3901 Tropical Blue
0702 Papaya	2530 Rose	3910 Crystal Blue
1010 Toast	2900 Deep Purple	5610 Bright Mint
1102 Pumpkin	3130 Dawn of Violet	

KingStar Thread Colors

MA10 Carnation Pink
MA11 Aqua
MG1 Gold 2
MS1 Silver

 **Note: One spool of 1000 meter thread is adequate for the project unless otherwise noted.**

Stabilizers

- OESD Medium Weight TearAway
- OESD Fusible Woven
- OESD SoftWeb

Fabrics/Textiles

Background

- Teal Quilter's Cotton
1/2 yard
- Yellow Quilter's Cotton
1/2 yard
- Dark Pink Quilter's Cotton
1/2 yard

Applique

- Purple Quilter's Cotton
(4) 3" x 3 1/2"
- Dark Pink Quilter's Cotton
1/4 yard
- Yellow Quilter's Cotton
1/4 yard
- Orange Quilter's Cotton
(2) 4 1/2" x 4 1/2"
- Blue Quilter's Cotton
1/4 yard
- Teal Quilter's Cotton
(2) 6 1/2" x 4 1/2"

Finishing

- Batting
1/2 yard
- Backing
1/2 yard
- Binding
1/4 yard (based on 2 1/2" wide binding strips)

 **Note: Fabric yardage is based on a 11" x 15" hooping. Fabric and stabilizer amounts may vary depending on hoop size and number of tiles per hooping.**

Notions & Tools

- OESD Grippy Grid
- OESD Perfect Embroidery Press Cloth
- OESD Expert Point and Press Tool
- 505 Temporary Spray Adhesive
- Ruler, rotary cutter, mat
- Contrasting bobbin thread (seam stitch only, may be different colors)
- Fabric marking pen
- Walking foot or Dual feed foot
- Embroidery Needle Sharp 75/11
- Sharp 90/14 for quilting

Thread Colors

- Per thread chart



SUMMARY



Completed Size:

Three Butterflies: 36 1/2" H x 12 1/2" W
Individual Butterfly 12 1/2" H x 12 1/2" W

80414-01



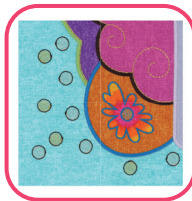
Design Size:
6.16 X 6.13 in.

80414-02



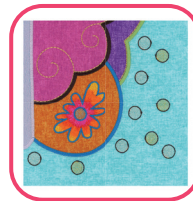
Design Size:
6.16 X 6.12 in.

80414-03



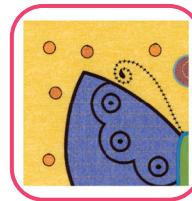
Design Size:
6.14 X 6.15 in.

80414-04



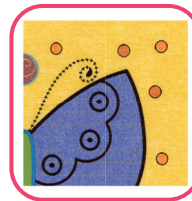
Design Size:
6.14 X 6.15 in.

80414-05



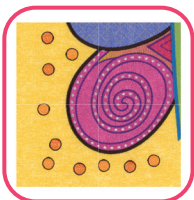
Design Size:
6.12 X 6.12 in.

80414-06



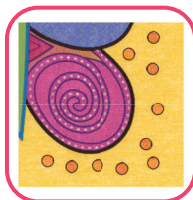
Design Size:
6.12 X 6.12 in.

80414-07



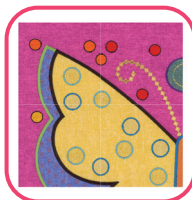
Design Size:
6.13 X 6.12 in.

80414-08



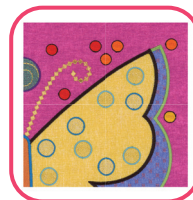
Design Size:
6.13 X 6.12 in.

80414-09



Design Size:
6.13 X 6.12 in.

80414-10



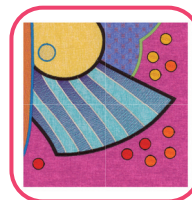
Design Size:
6.13 X 6.12 in.

80414-11



Design Size:
6.14 X 6.13 in.

80414-12



Design Size:
6.14 X 6.13 in.

GENERAL INSTRUCTIONS

Embroider one of each design file 80414-01 through 80414-12.

Design 80414-01 is shown in the instructions.

For each hooping, cut the following 11" x 15", or large enough to hoop:

- 1 layer of background fabric
- 1 layer of OESD Fusible Woven
- 1 layer of OESD Medium Weight TearAway

Note: To economize on fabric, cut the fabric 15" wide (or the height of the hoop + 2") x the width of the fabric. Apply the stabilizers. Move the hoop down the length of the fabric as each tile is stitched. Leave a minimum of 1 1/2" between the tiles. This is called chain hooping.

Step 1

- Apply OESD Fusible Woven to the back of the background fabric, per the product directions.



Step 2

- Cut the applique fabrics 1/4" - 1/2" larger than the applique patterns. The applique patterns are included at the end of the instructions.
- Fuse one layer of SoftWeb to the wrong side of the applique fabrics to provide body.



Step 3

- Apply one layer of OESD Medium Weight TearAway to the wrong side of the background fabric with 505 Temporary Spray Adhesive.
- Using the OESD Grippy Grid, hoop fabric and stabilizer.



Step 4

- Load the selected design into the machine.
- Example design is 80414-01.
- Thread the machine per the thread chart.
- Place the hoop on the machine.
- Stitch Machine Step 1, Purple Fabric Placement Stitch.



Step 5

- Remove the hoop from the machine, but NOT the project from the hoop.
- Place the hoop on a flat surface.
- Remove the paper backing off the SoftWeb on the purple applique fabric.
- Completely cover the placement stitch with the purple applique fabric.
- Tape in place with OESD Expert Embroidery Tape TearAway to secure.



Step 6

- Return the hoop to the machine.
- Stitch Machine Step 2, Cut Line and Tackdown.



Step 7

- Remove the hoop from the machine, but NOT the project from the hoop.
- Trim the excess fabric as close to the cut line as possible. If the outermost stitches (cut line) are cut, the inner stitches (tackdown) will hold the applique in place.



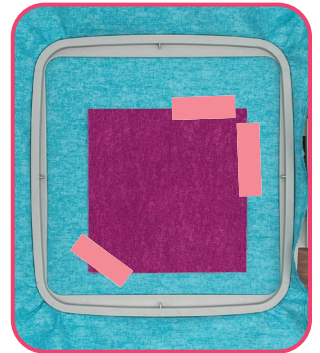
Step 8

- Return the hoop to the machine.
- Stitch Machine Step 3, Dark Pink Fabric Placement Stitch.



Step 9

- Remove the hoop from the machine, but NOT the project from the hoop.
- Place the hoop on a flat surface.
- Remove the paper backing off the SoftWeb on the dark pink applique fabric.
- Completely cover the placement stitch with the dark pink applique fabric.
- Tape in place to secure.



Step 10

- Return the hoop to the machine.
- Stitch Machine Step 4, Cut Line and Tackdown.



Step 11

- Remove the hoop from the machine, but NOT the project from the hoop.
- Trim the excess fabric as close to the cut line as possible.



Step 12

- Return the hoop to the machine.
- Stitch Machine Step 5, Yellow Fabric Placement Stitch.



Step 13

- Remove the hoop from the machine, but NOT the project from the hoop.
- Place the hoop on a flat surface.
- Remove the paper backing off the SoftWeb on the yellow applique fabric.
- Completely cover the placement stitch with the yellow applique fabric.
- Tape in place to secure.



Step 14

- Return the hoop to the machine.
- Stitch Machine Step 6, Cut Line and Tackdown.



Step 15

- Remove the hoop from the machine, but NOT the project from the hoop.
- Trim the excess fabric as close to the cut line as possible.



Step 16

- Press the applique shapes in the hoop to fuse the SoftWeb on the back of the appliques to the background fabric.
- Cool completely before continuing the embroidery design.



Step 17

- Return the hoop to the machine.
- Stitch Machine Steps 7 - 17 per the thread chart, **stopping before the last machine step.**



Step 18

- The last color in each tile is called "Seam". This line is the guide when trimming and stitching the tiles together and needs to be highly visible on the back side of the tile. Stitch the top color in a thread that blends with the fabric.
- For the bobbin, use a color that contrasts sharply with the back of the tile.

Note: Since the bobbin color doesn't have to be the same on each tile, this is a great time to use up partially wound bobbins.



Step 19

- After embroidery is complete, press each tile face down on an OESD Perfect Embroidery Press Cloth.
- Write the number of the tile on the back so it is easily identified during construction! Use a pen or pencil that will not bleed through to the front side.

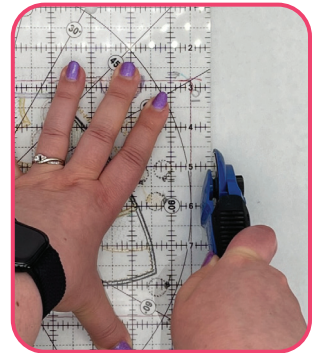
Note: Using the Perfect Embroidery Press Cloth when pressing your design helps prevent the stitches from becoming crushed and absorbs steam for a perfectly pressed finish.



Step 20

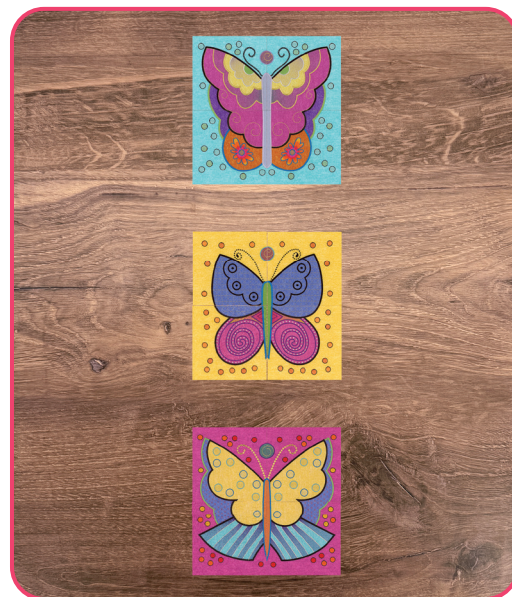
- At the cutting mat, place the tile right side down.
- Identify the "seam" stitch line. Trim 1/2" out from the seam stitch line, on all four sides, to create the seam allowance.

Note: Accuracy here will significantly facilitate the construction of the scene.



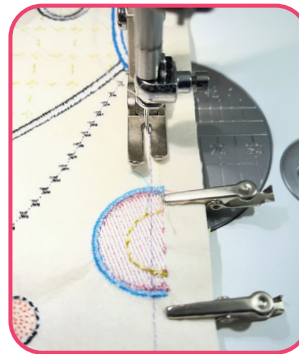
Step 21

- Arrange the tiles in the layout for the scene. This collection can be sewn all together or as individual butterflies.



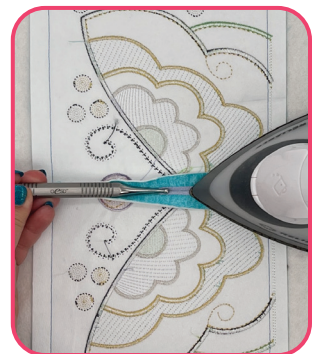
□ Step 22

- Stitch two adjacent tiles, right sides together; matching the left and right sides together. Align the matching edges and stitch just inside of the seam line.
- If the seams or major points of matching do not match up, try stitching that part first. Check for accuracy.
- Repeat until all the tiles have been paired.



□ Step 23

- Press each seam open.
- While warm, open the seam allowance with the large ball of the OESD Expert Point and Press Tool.
- Press again and allow to cool.
- Once cool, remove the excess stabilizer in the seam allowance.
- Do not remove excess stabilizer from inside the seam line.



✍ **Note:** If the seams do not come apart easily, press both seam allowances to one side using steam and a cotton or linen setting.

□ Step 24

- Lay out the pressed tiles.
- Pair the tiles in groups of 4, connecting upper rows to the rows below.
- Align the center seams.
- Stitch just inside the seam line, connecting all four tiles.
- Press seams open.
- Repeat for remaining pairs of tiles.



□ Step 25

- If connecting the three butterflies to make a vertical tiling scene, finish connecting the units of tiles to the ones below. Press and remove stabilizer from the seam allowances. Then continue to stitch the rows together and press until the scene is complete.



□ Step 26

- Cut batting and backing at least 4" larger than the tiling scene.
- Layer the backing (right side down), batting, and center the tiling scene (right side up).
- Spray baste all 3 layers with 505 Temporary Spray Adhesive.



Step 27

- Thread the sewing machine with a thread color that blends with the scene or invisible thread.
- Stitch in the ditch where the tiles connect to attach the batting and backing to the top. For best results, use a walking foot or a dual feed foot.
- Trim 1/4" from the seam line of the tiling scene through all three layers to square up the finished scene. Zigzag over the raw edges to join the edges together to make the binding process easier.



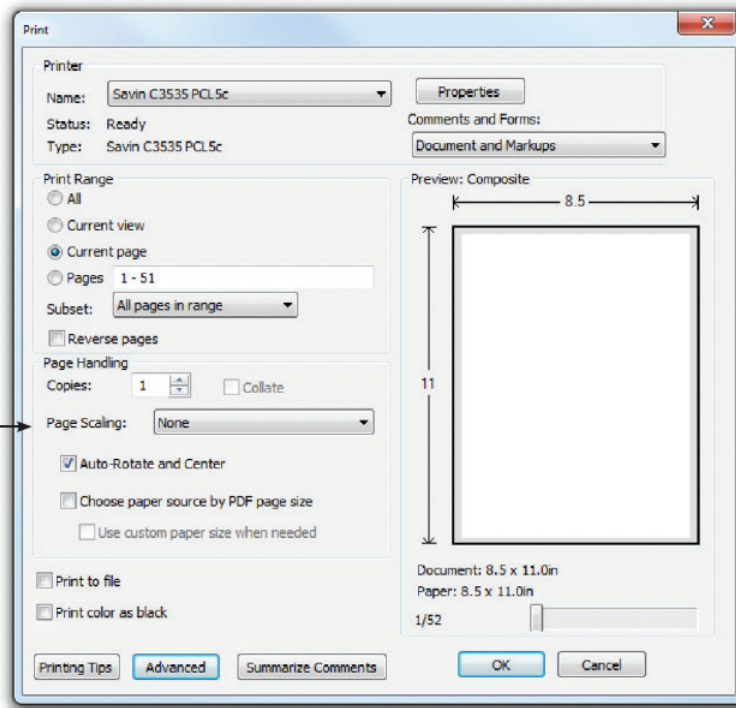
Step 28

- Bind as desired.



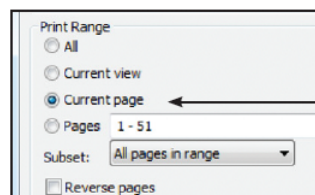
ATTENTION

When printing this document, any page scaling or page fitting options in your print dialog box must be turned OFF or set to NONE so that your files will print out at their actual size. Images not printed at actual size will not function as intended.



TO SAVE PAPER

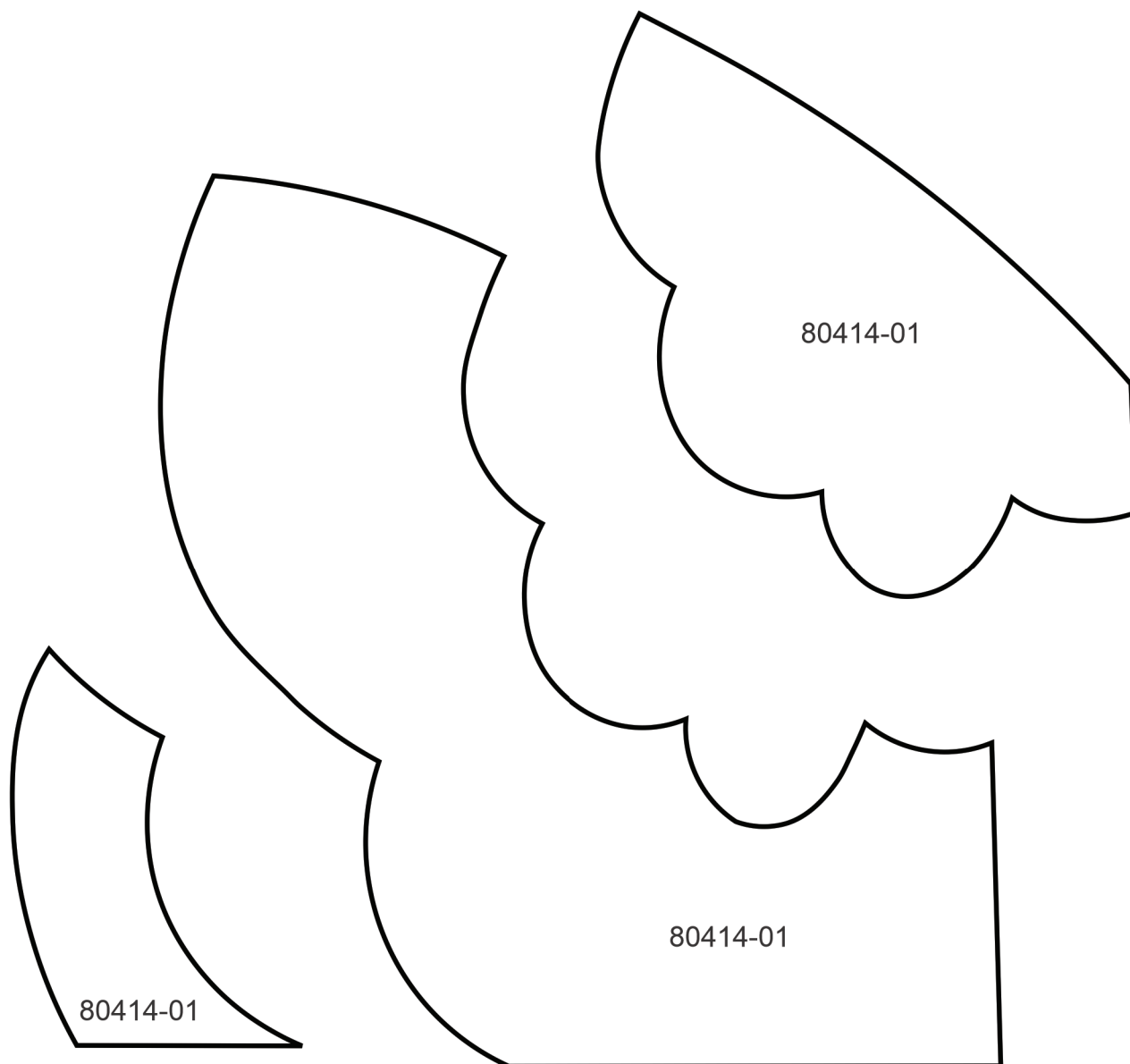
Only print the desired image by navigating to the image's page, go to File > Print and select "Current page" in the print dialog box. Repeat for each desired image.



APPLIQUE PATTERNS

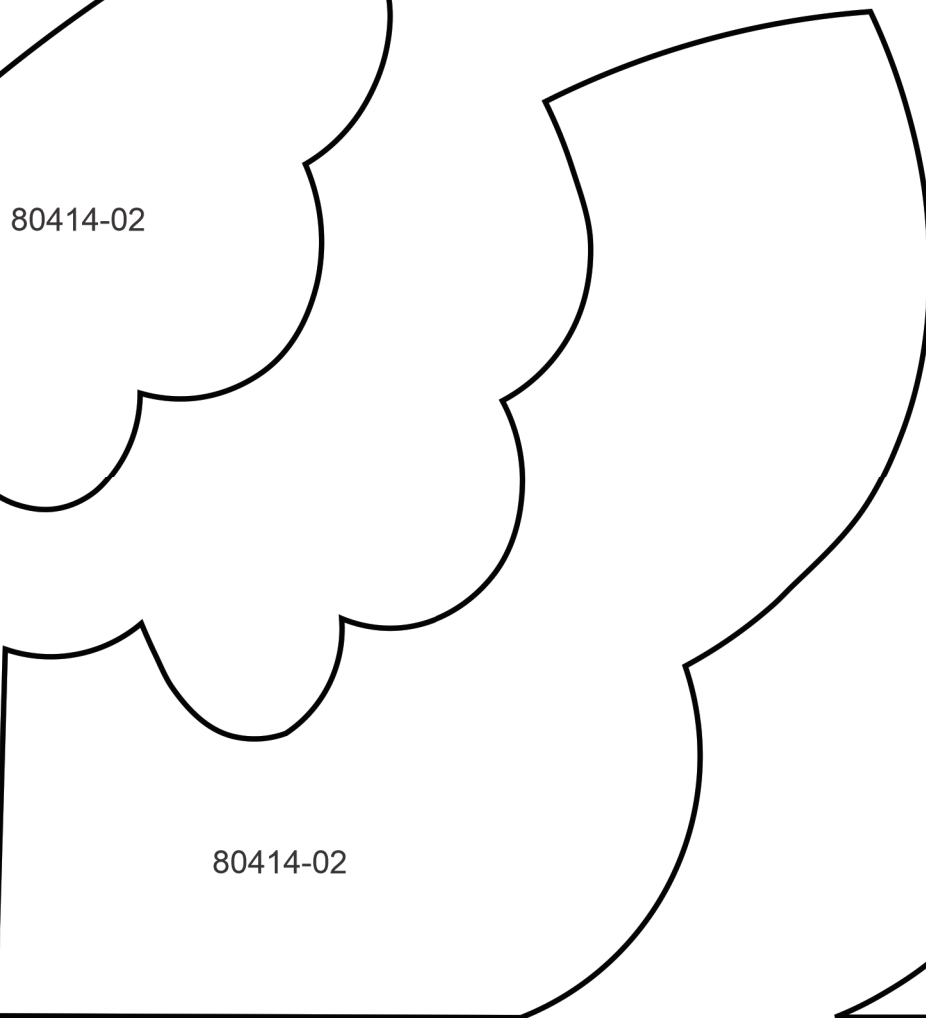
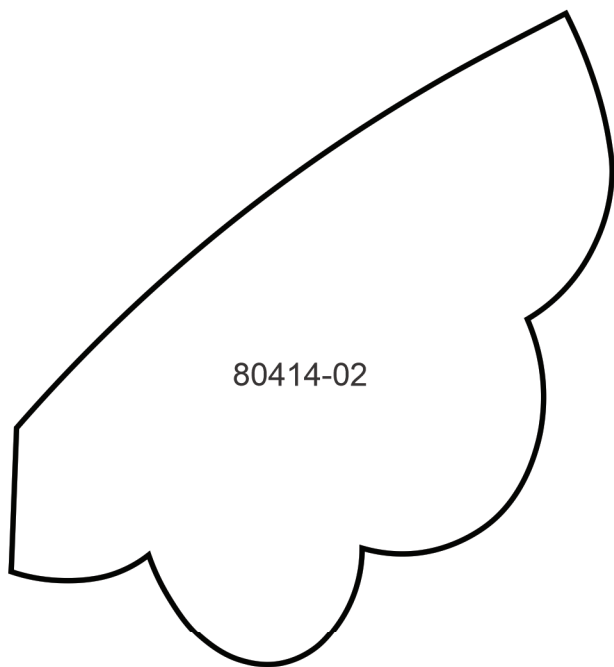


Print at 100%. No scaling. This box measures 1" x 1". Use the box as an accuracy guide when printing templates.



APPLIQUE PATTERNS

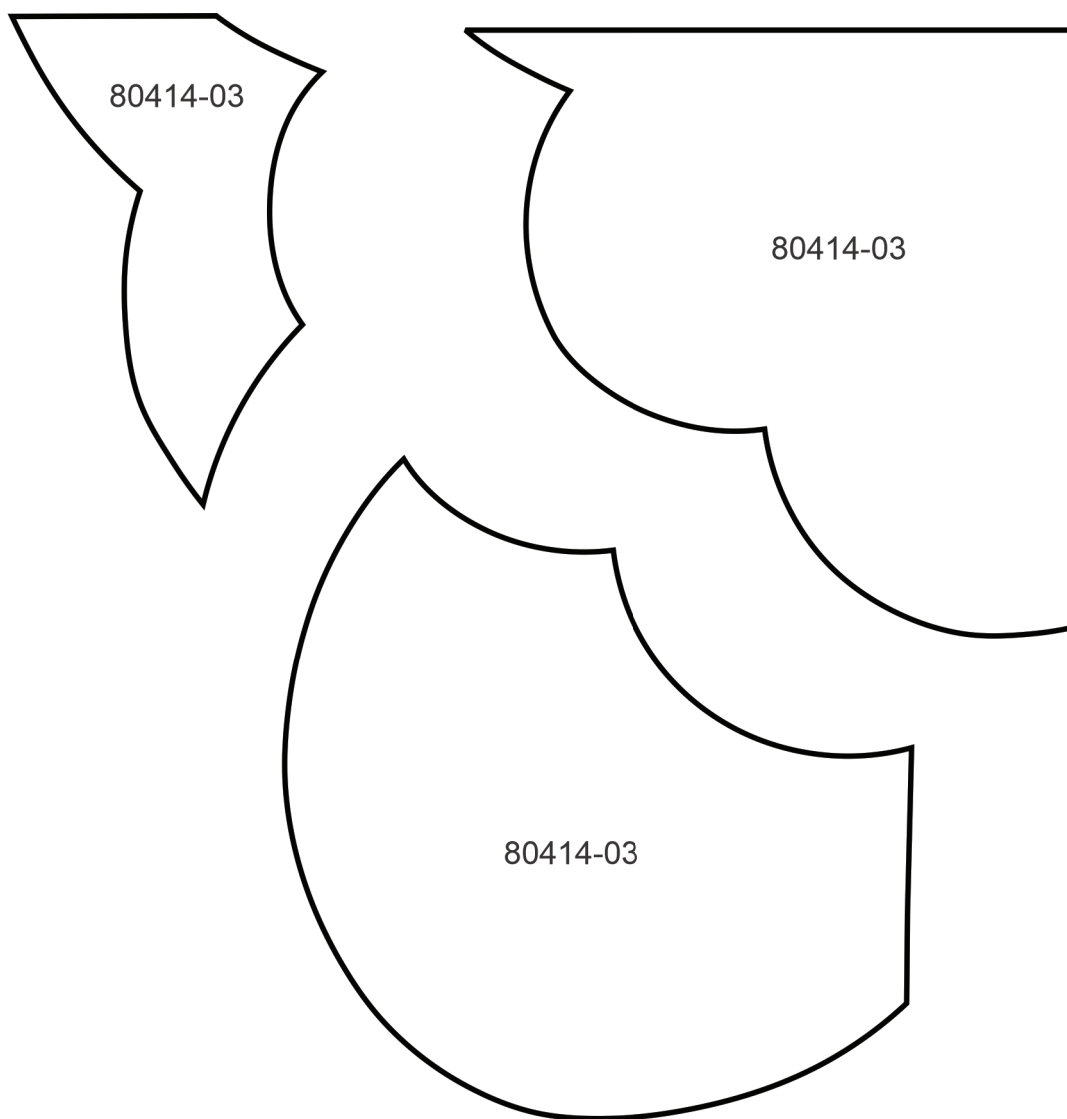
Print at 100%. No scaling. This box measures 1" x 1". Use the box as an accuracy guide when printing templates.



APPLIQUE PATTERNS



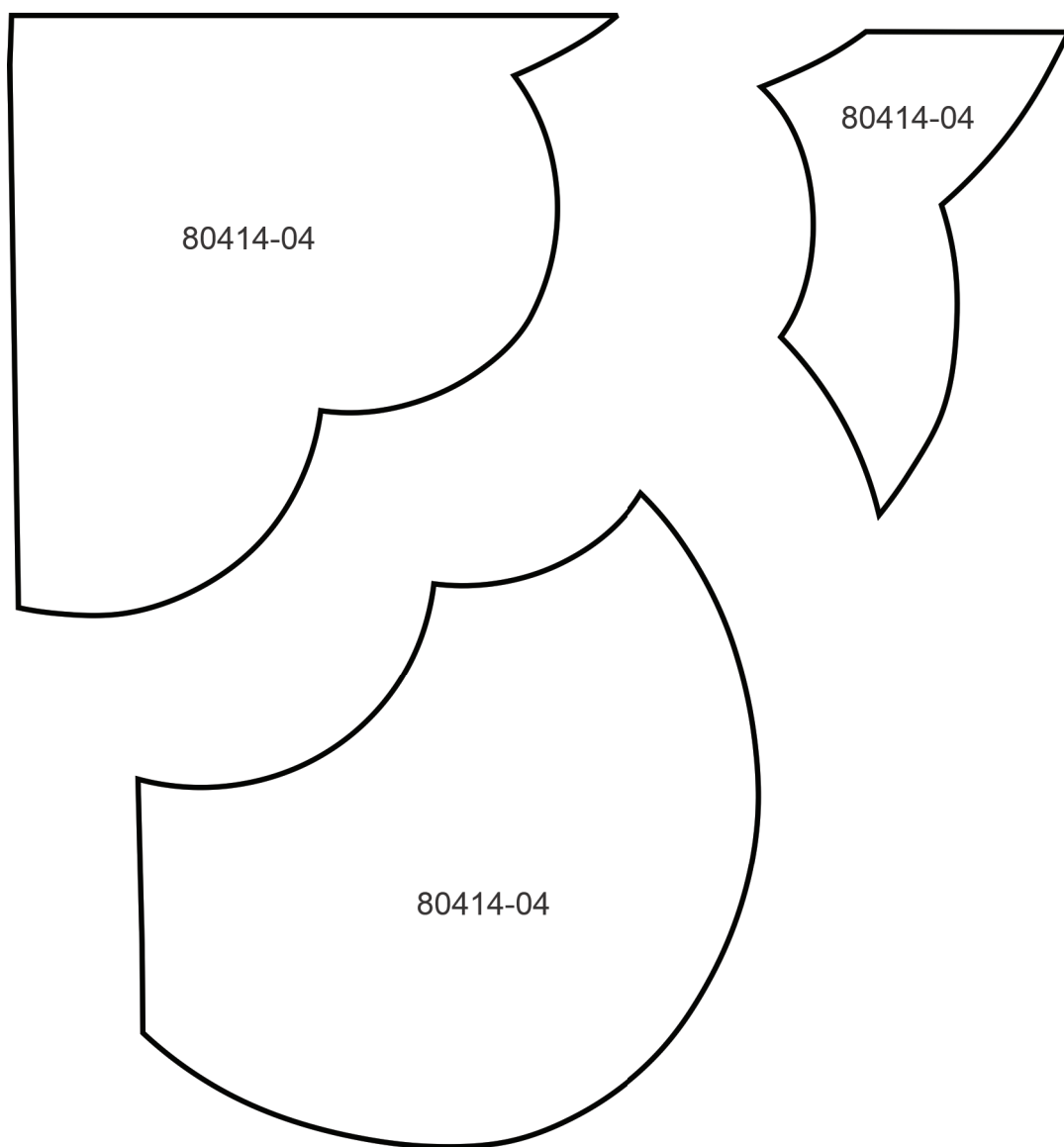
Print at 100%. No scaling. This box measures 1" x 1". Use the box as an accuracy guide when printing templates.



APPLIQUE PATTERNS



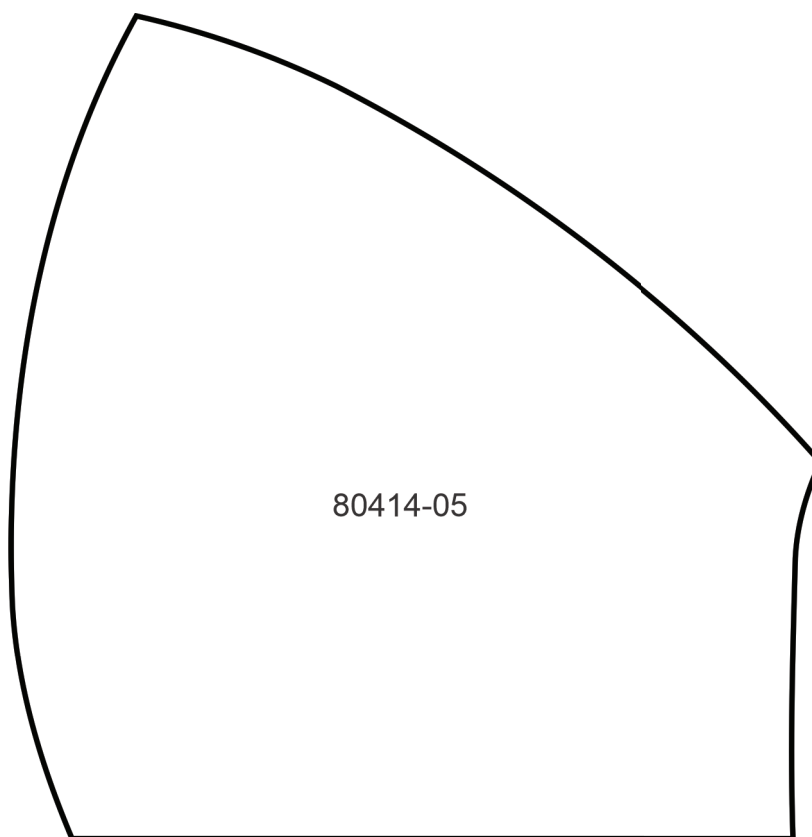
Print at 100%. No scaling. This box measures 1" x 1". Use the box as an accuracy guide when printing templates.



APPLIQUE PATTERNS



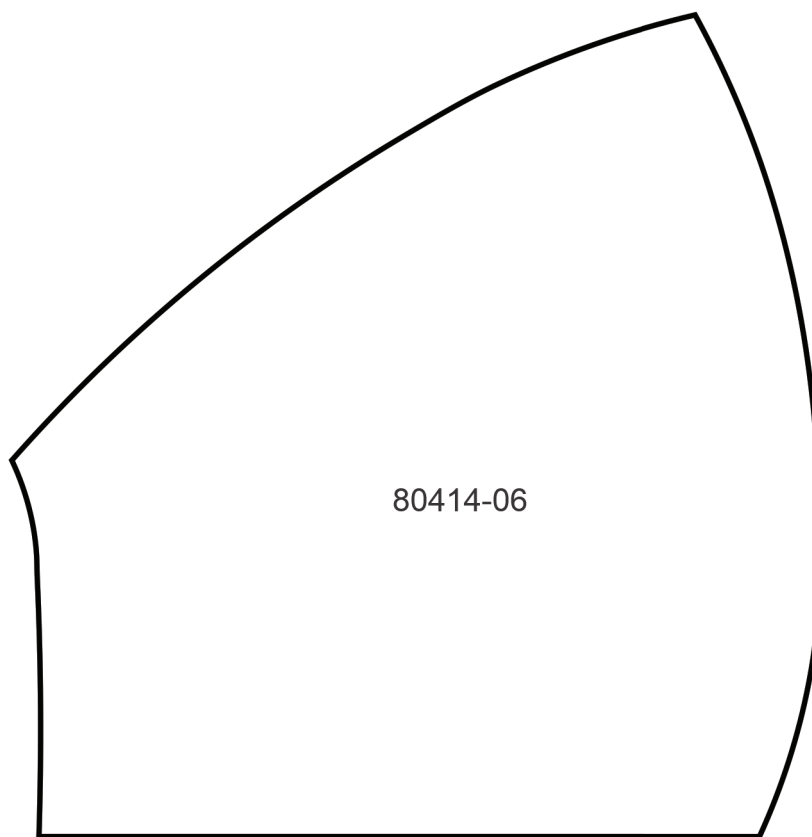
Print at 100%. No scaling. This box measures 1" x 1". Use the box as an accuracy guide when printing templates.



APPLIQUE PATTERNS



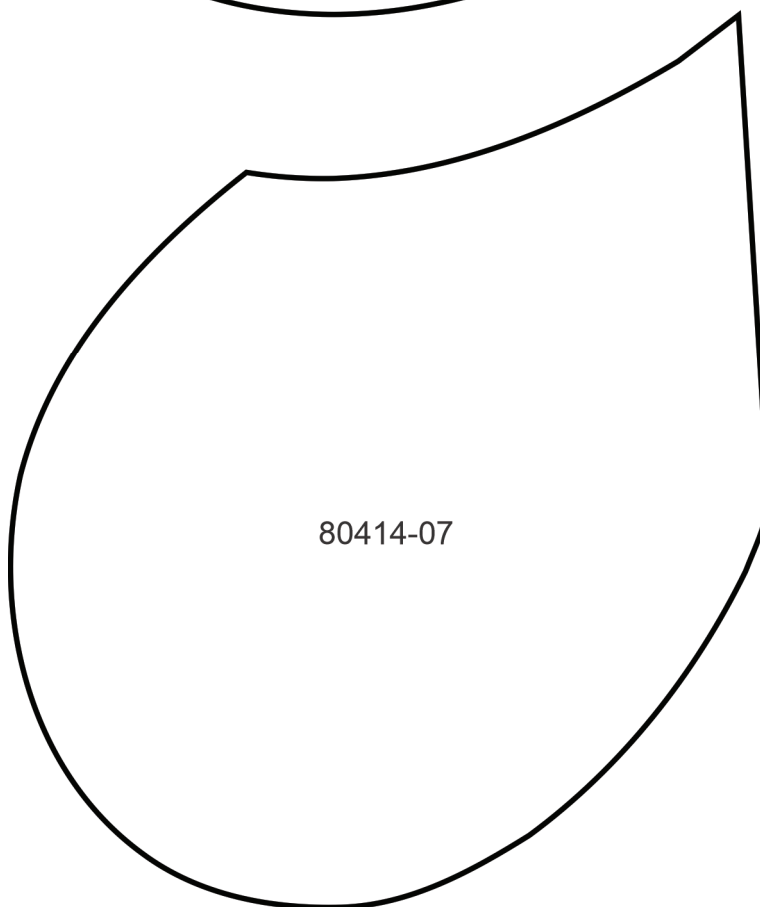
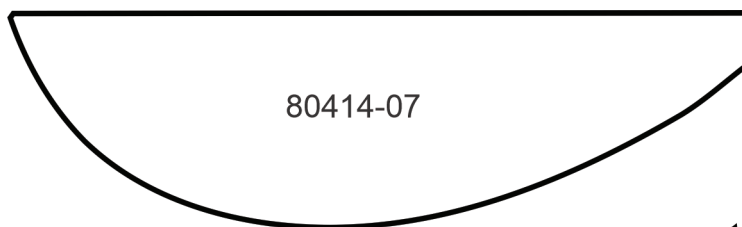
Print at 100%. No scaling. This box measures 1" x 1". Use the box as an accuracy guide when printing templates.



APPLIQUE PATTERNS



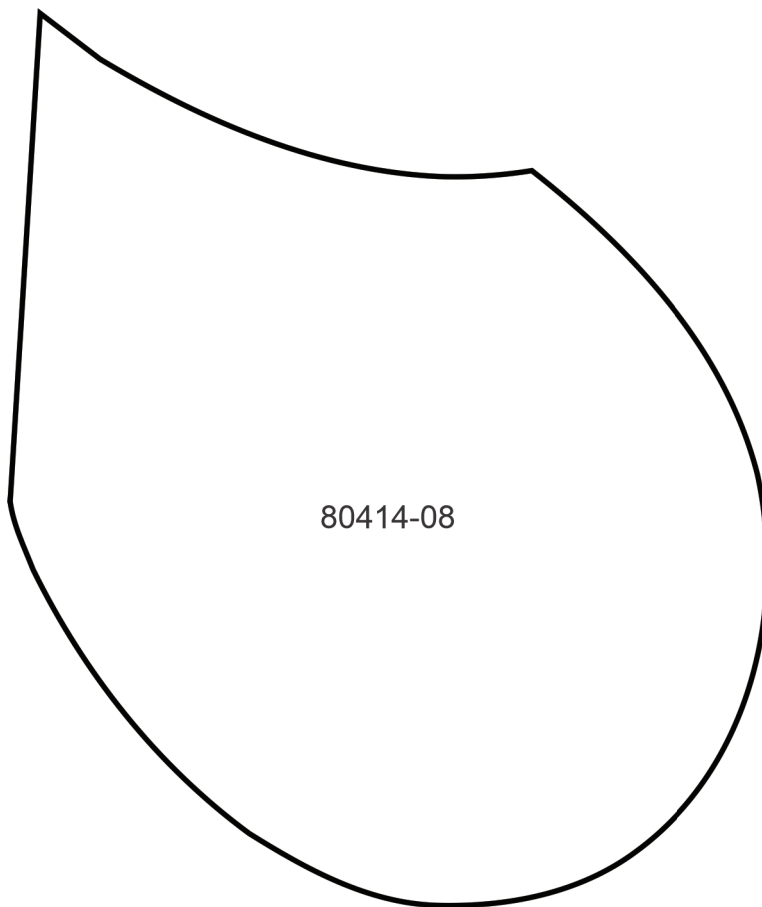
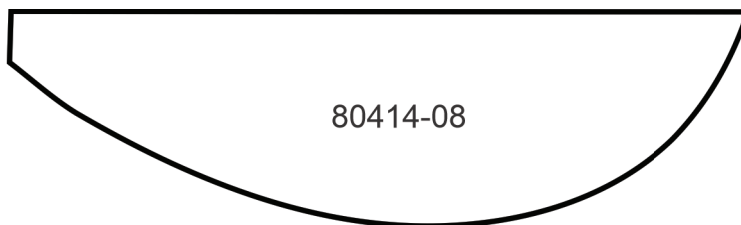
Print at 100%. No scaling. This box measures 1" x 1". Use the box as an accuracy guide when printing templates.



APPLIQUE PATTERNS



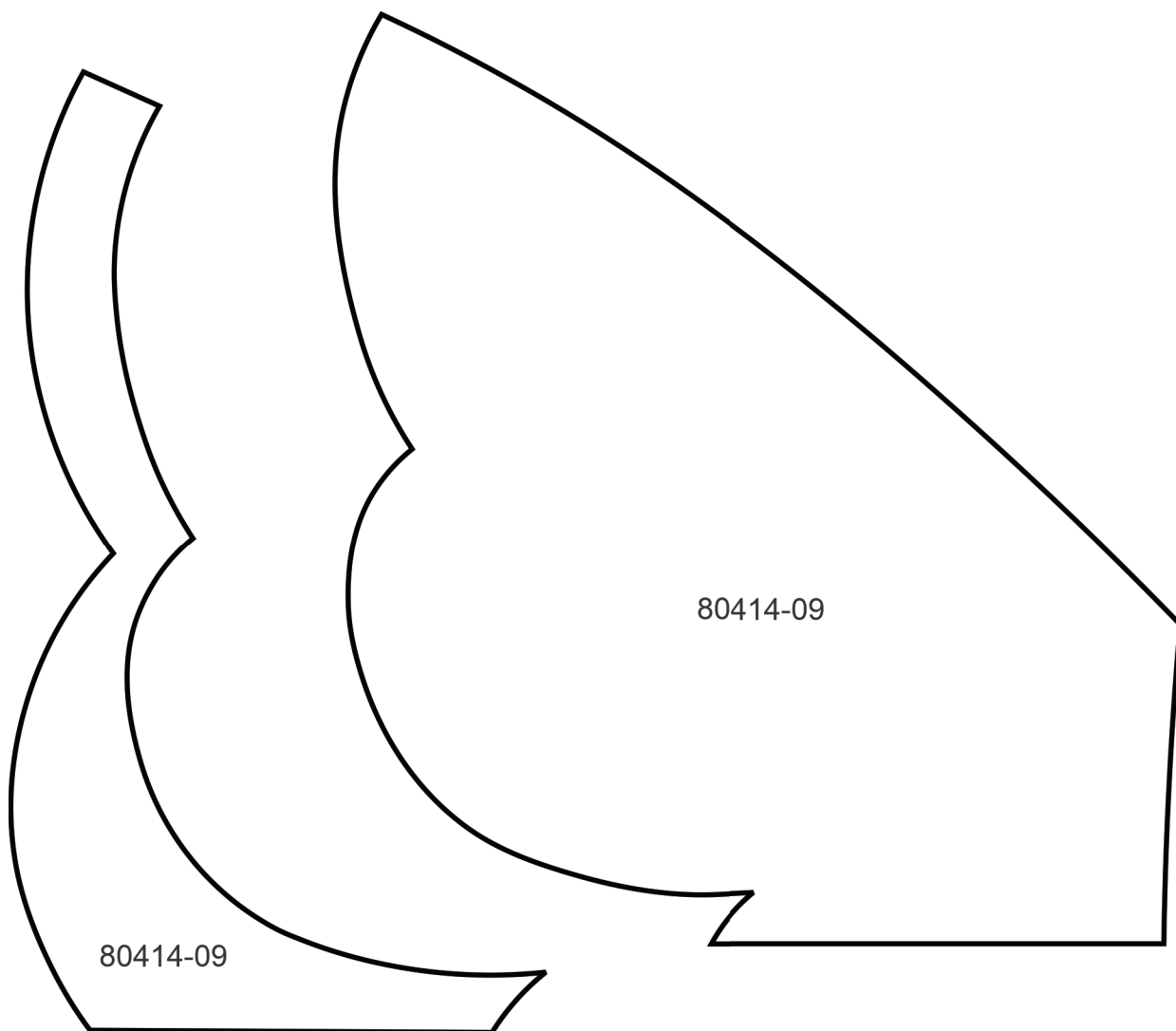
Print at 100%. No scaling. This box measures 1" x 1". Use the box as an accuracy guide when printing templates.



APPLIQUE PATTERNS

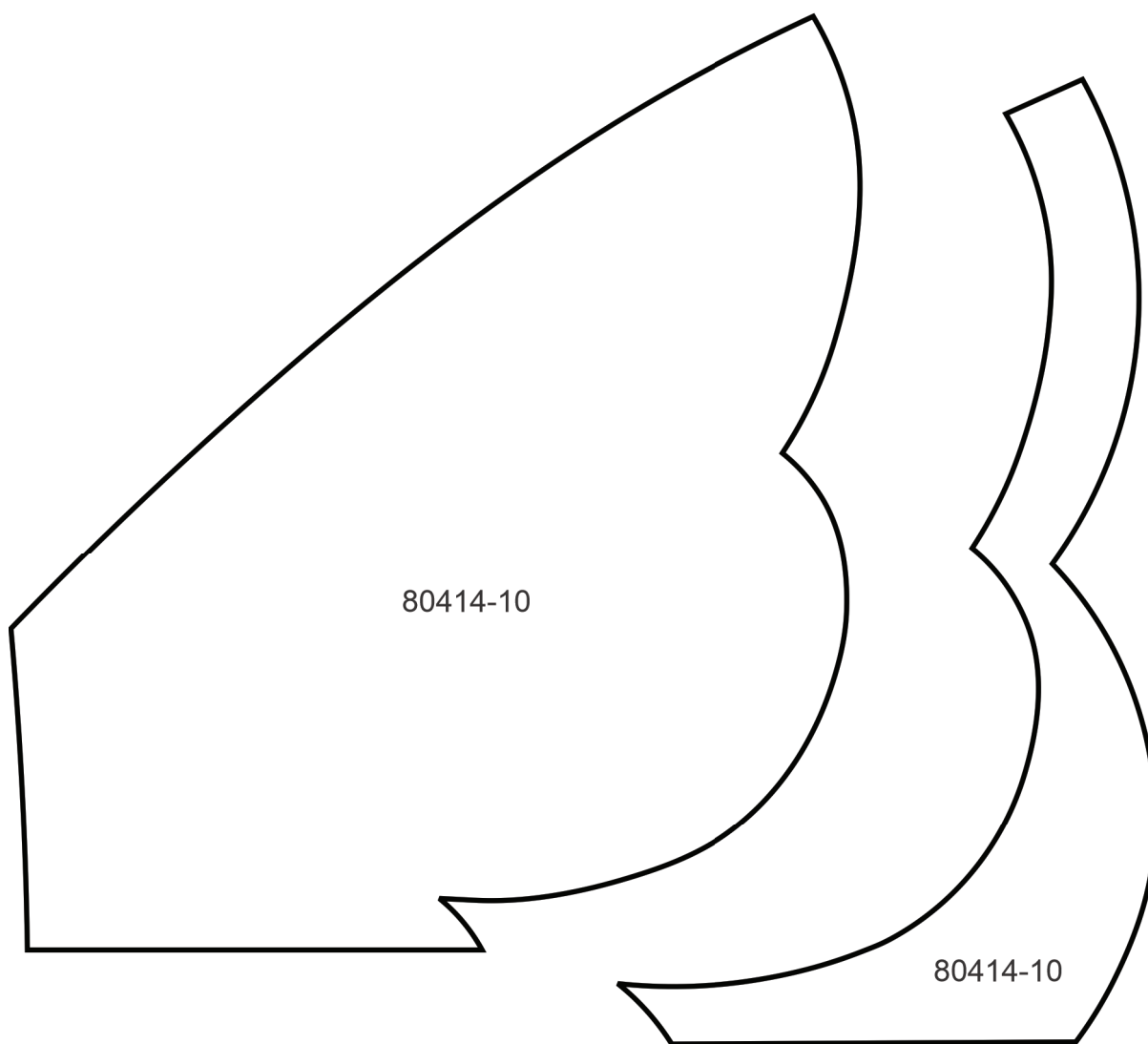


Print at 100%. No scaling. This box measures 1" x 1". Use the box as an accuracy guide when printing templates.



APPLIQUE PATTERNS

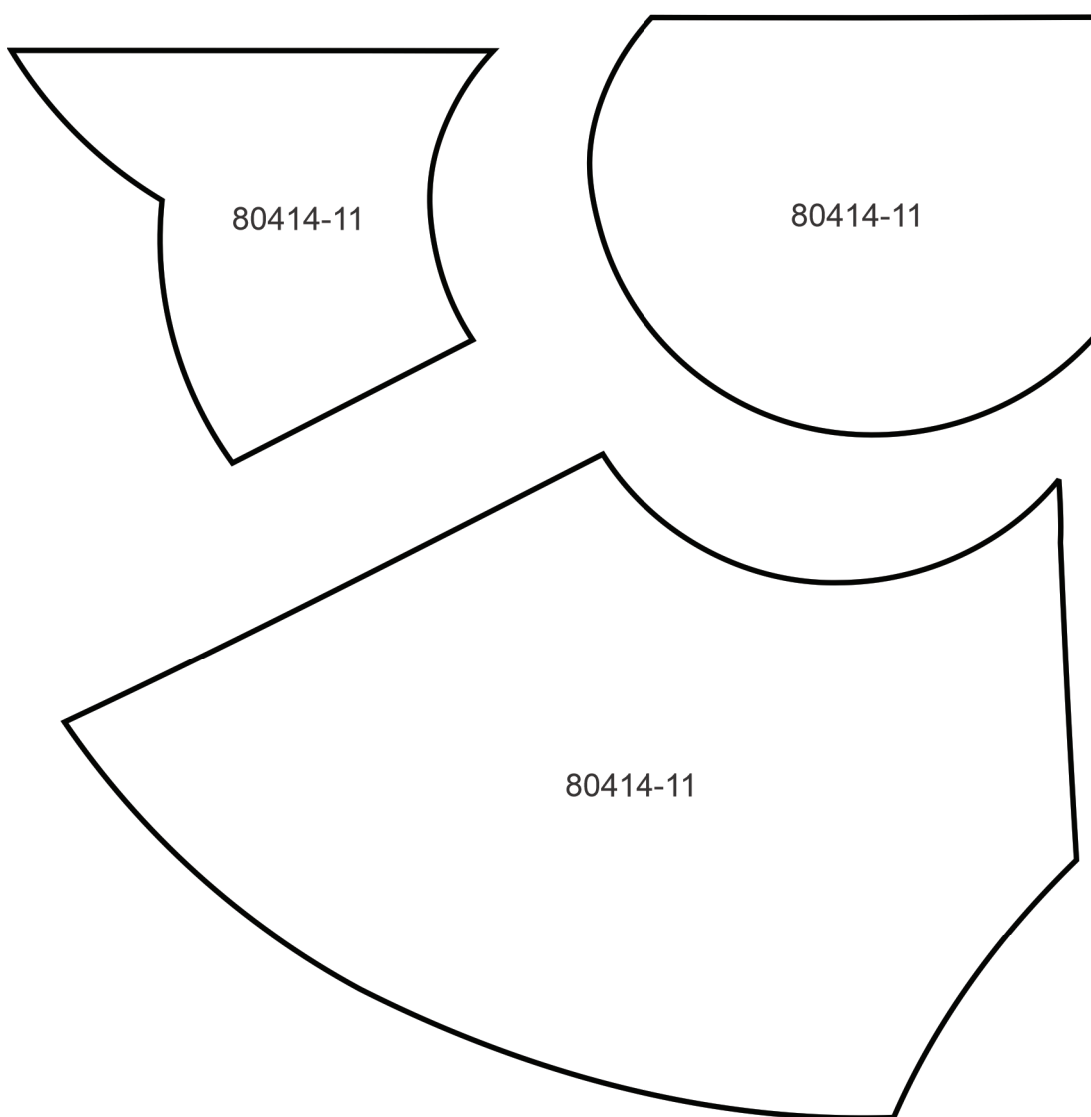
Print at 100%. No scaling. This box measures 1" x 1". Use the box as an accuracy guide when printing templates.



APPLIQUE PATTERNS



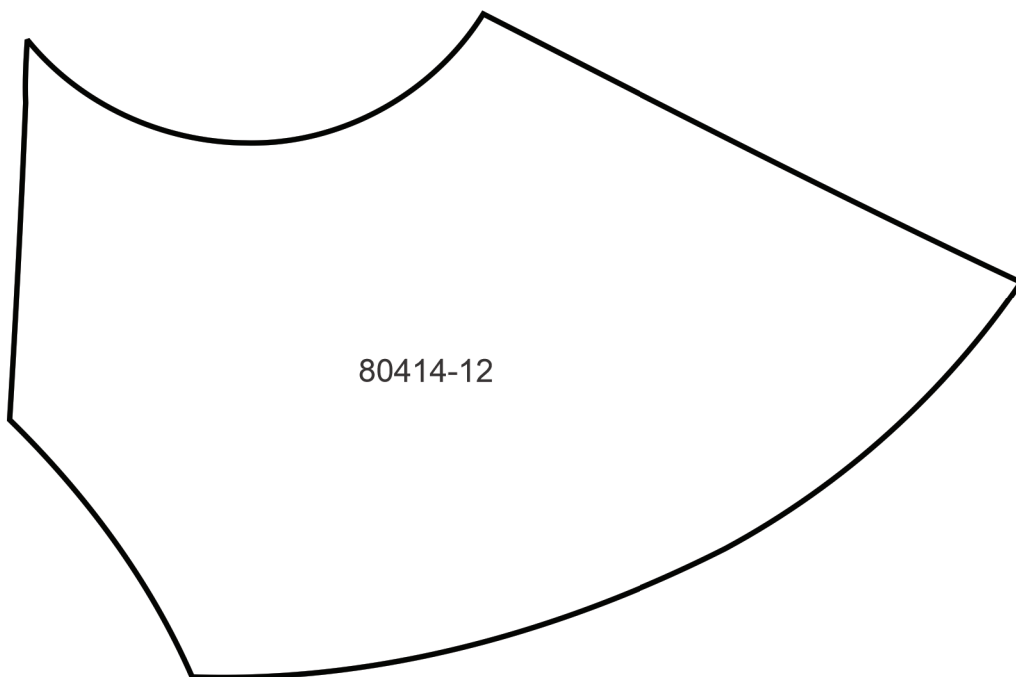
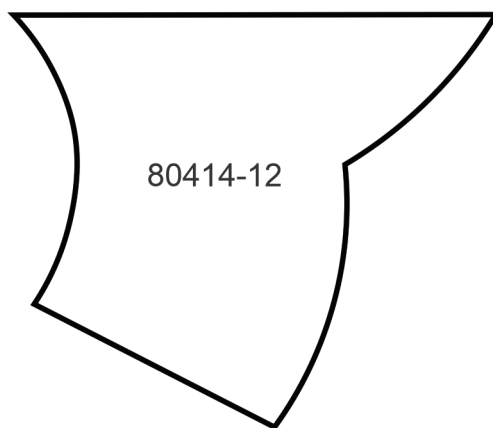
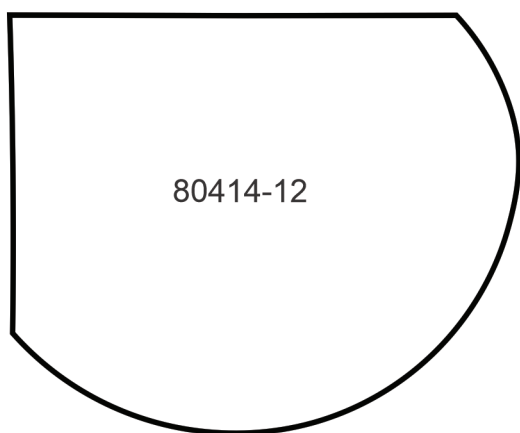
Print at 100%. No scaling. This box measures 1" x 1". Use the box as an accuracy guide when printing templates.



APPLIQUE PATTERNS



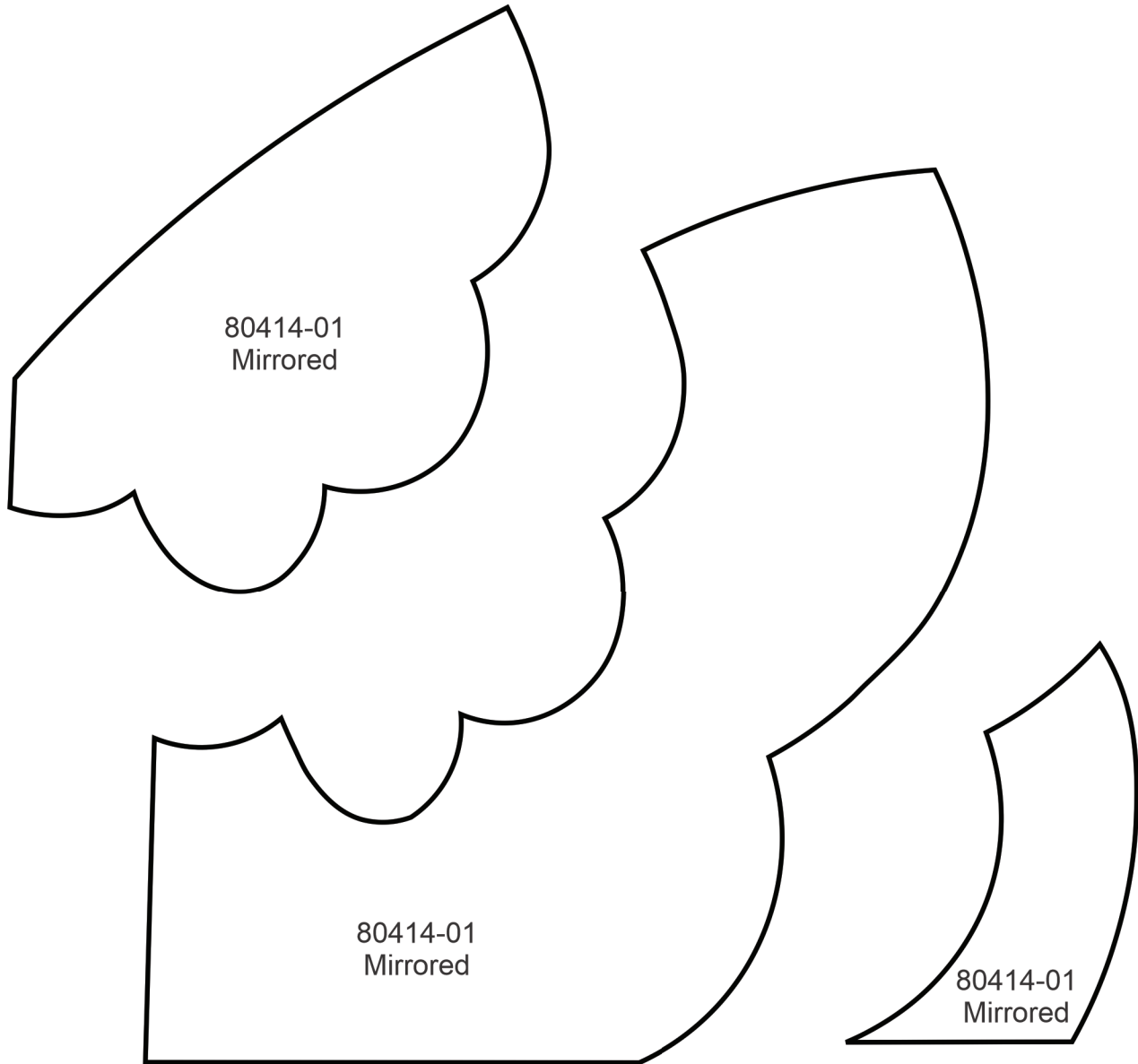
Print at 100%. No scaling. This box measures 1" x 1". Use the box as an accuracy guide when printing templates.



MIRRORED PATTERNS



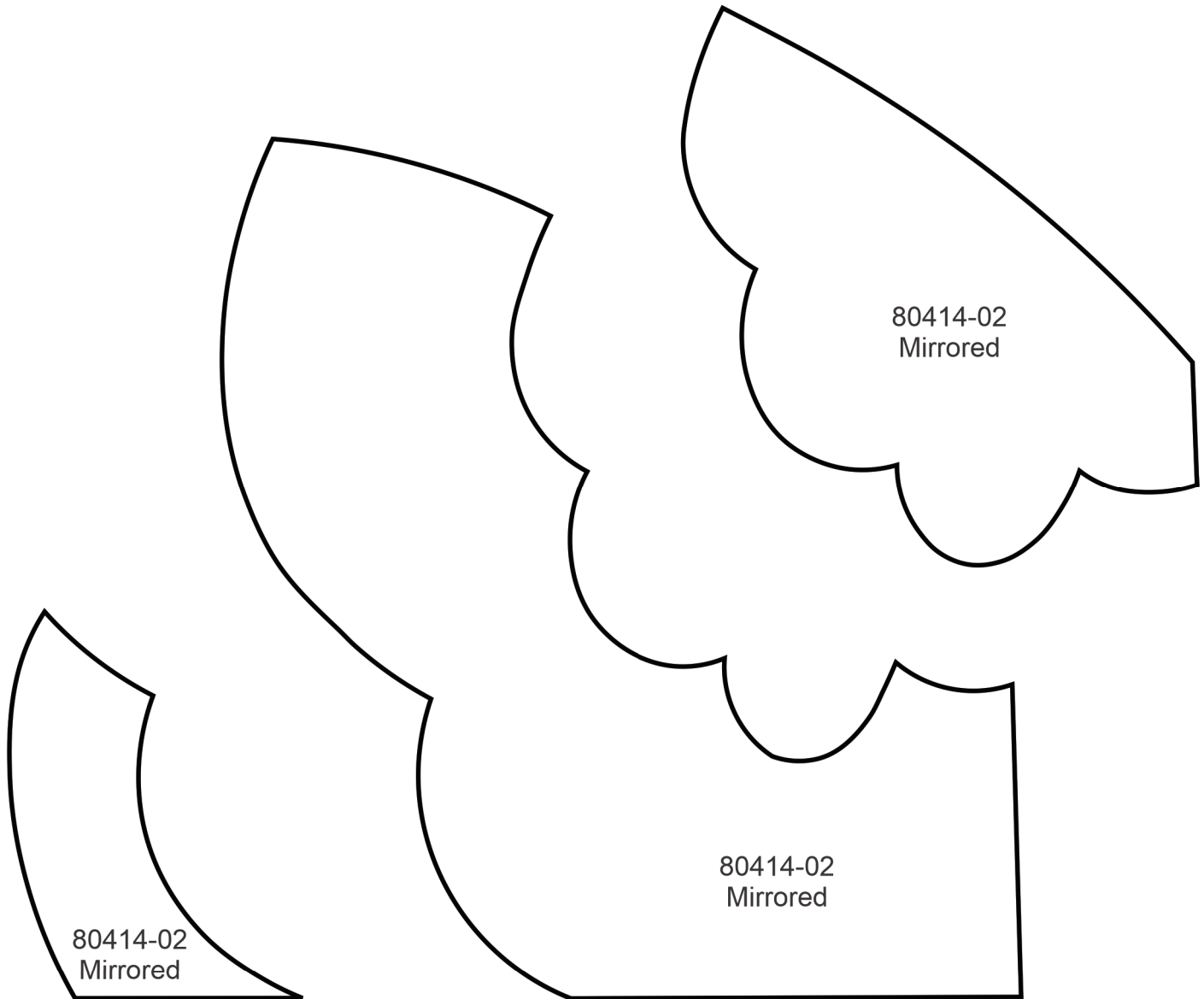
Print at 100%. No scaling. This box measures 1" x 1". Use the box as an accuracy guide when printing templates.



MIRRORED PATTERNS



Print at 100%. No scaling. This box measures 1" x 1". Use the box as an accuracy guide when printing templates.



MIRRORED PATTERNS



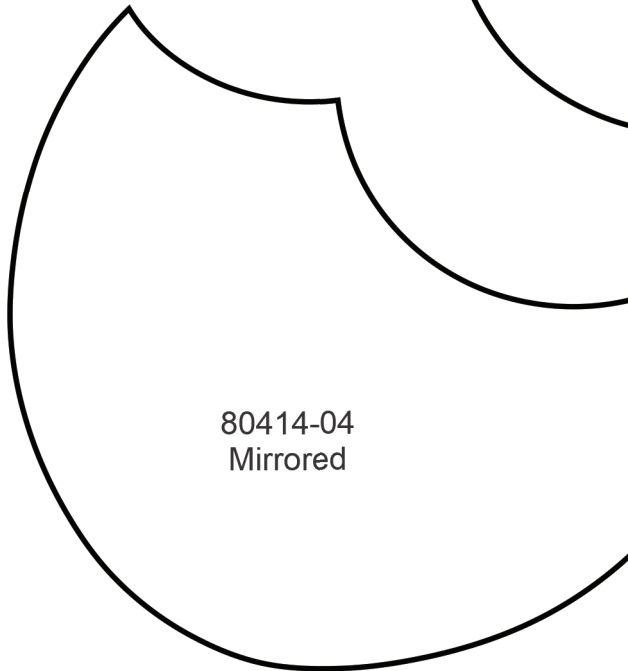
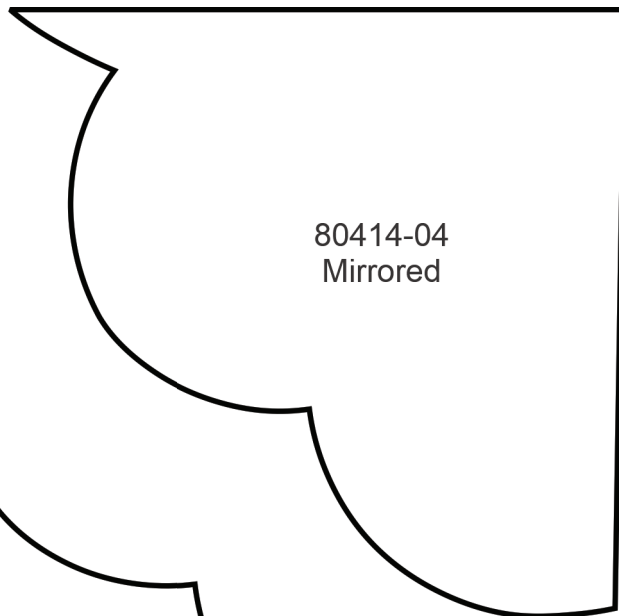
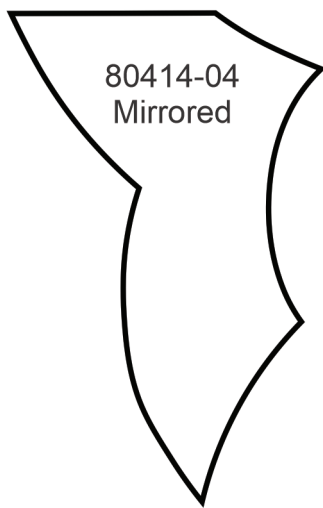
Print at 100%. No scaling. This box measures 1" x 1". Use the box as an accuracy guide when printing templates.



MIRRORED PATTERNS



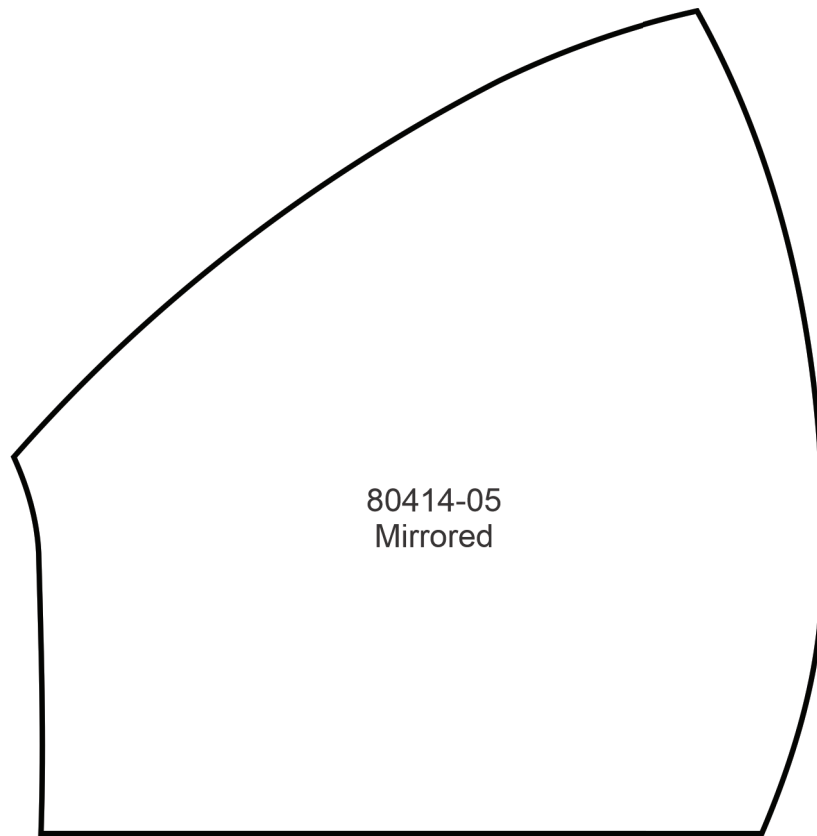
Print at 100%. No scaling. This box measures 1" x 1". Use the box as an accuracy guide when printing templates.



MIRRORED PATTERNS



Print at 100%. No scaling. This box measures 1" x 1". Use the box as an accuracy guide when printing templates.

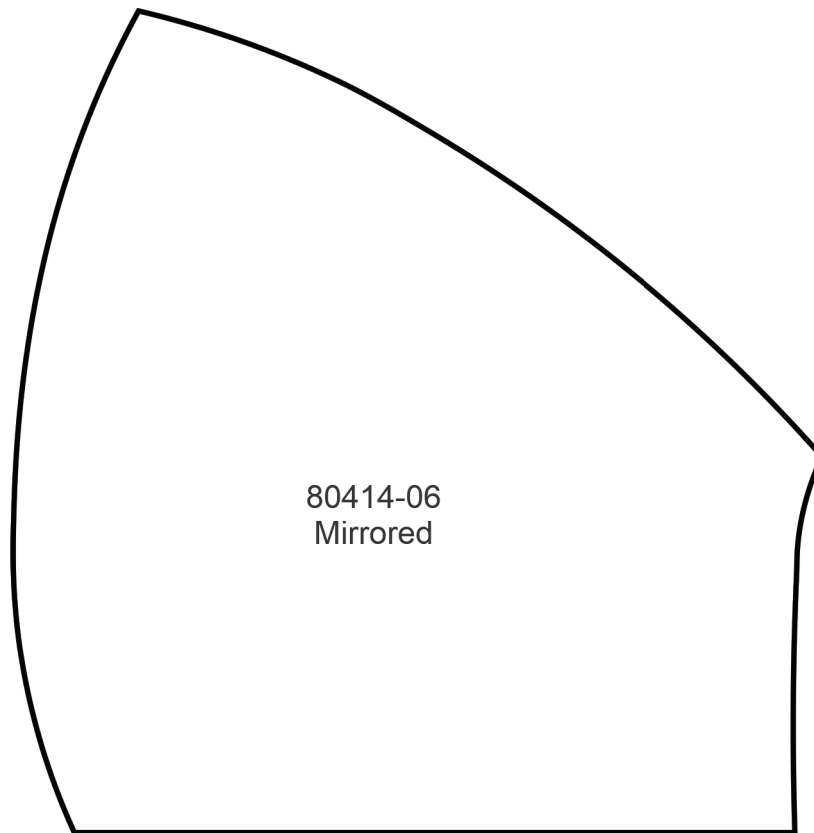


80414-05
Mirrored

MIRRORED PATTERNS



Print at 100%. No scaling. This box measures 1" x 1". Use the box as an accuracy guide when printing templates.



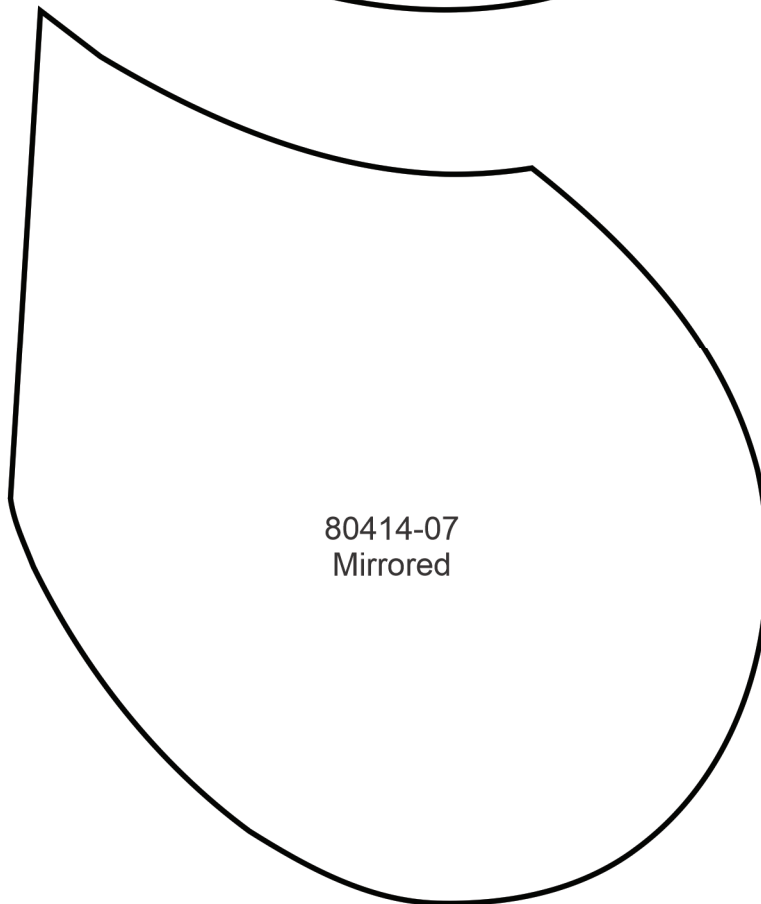
MIRRORED PATTERNS



Print at 100%. No scaling. This box measures 1" x 1". Use the box as an accuracy guide when printing templates.



80414-07
Mirrored

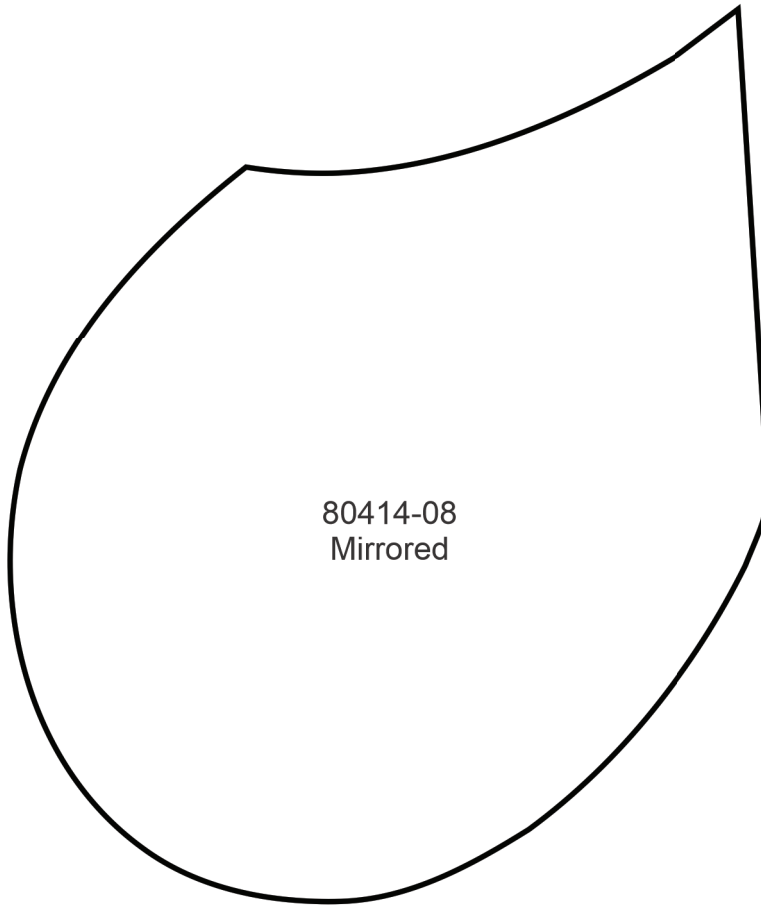


80414-07
Mirrored

MIRRORED PATTERNS



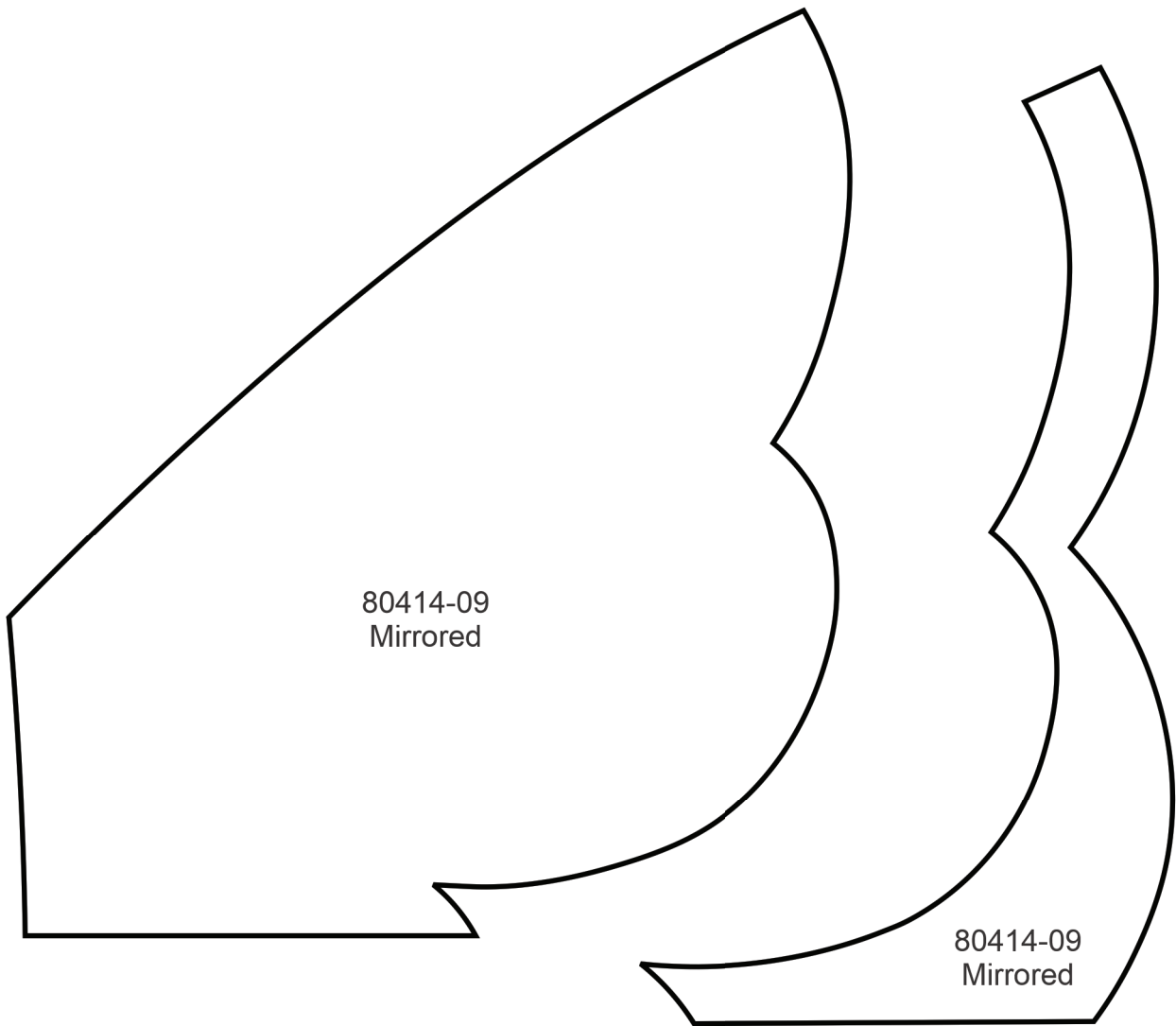
Print at 100%. No scaling. This box measures 1" x 1". Use the box as an accuracy guide when printing templates.



MIRRORED PATTERNS



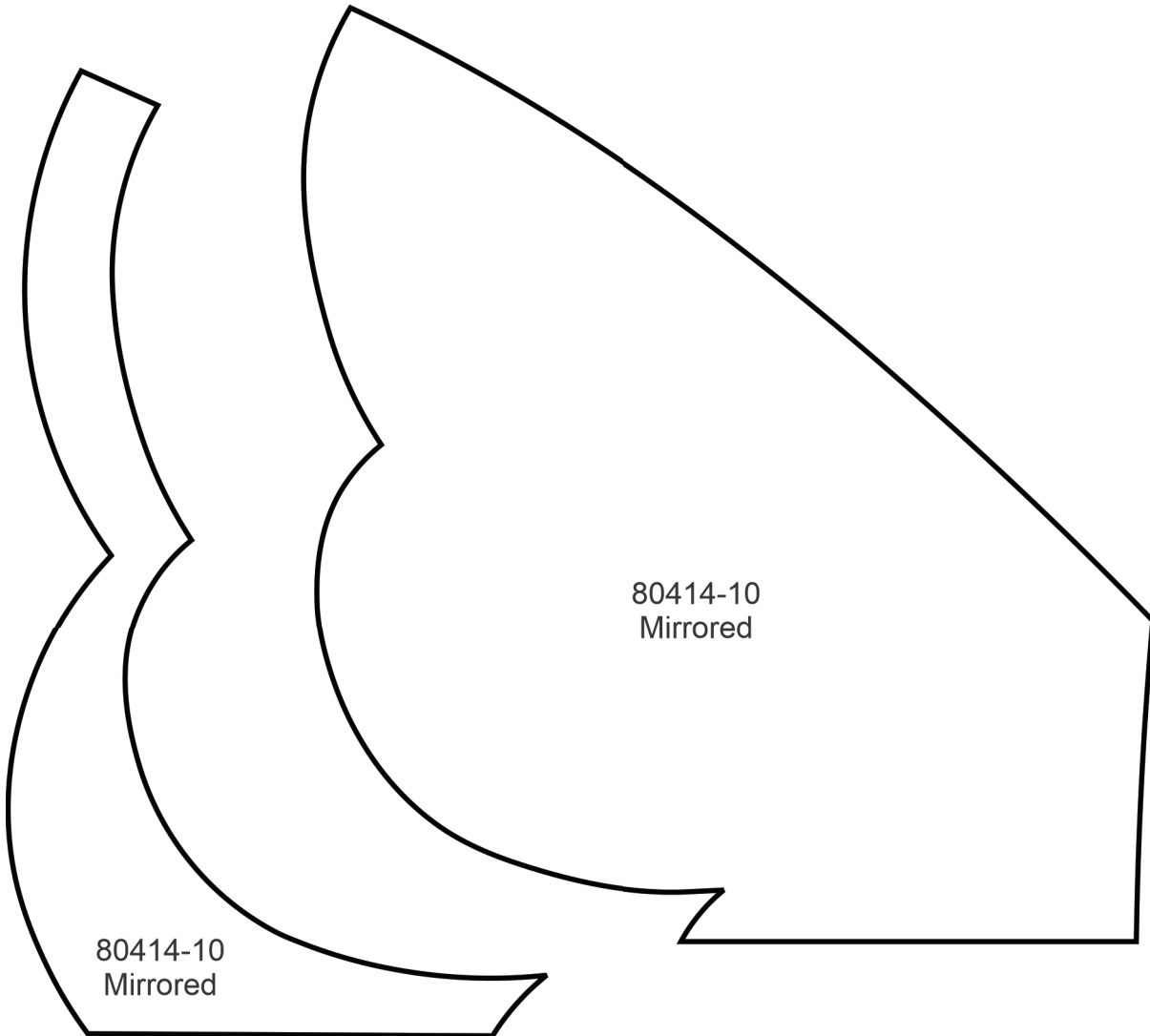
Print at 100%. No scaling. This box measures 1" x 1". Use the box as an accuracy guide when printing templates.



MIRRORED PATTERNS



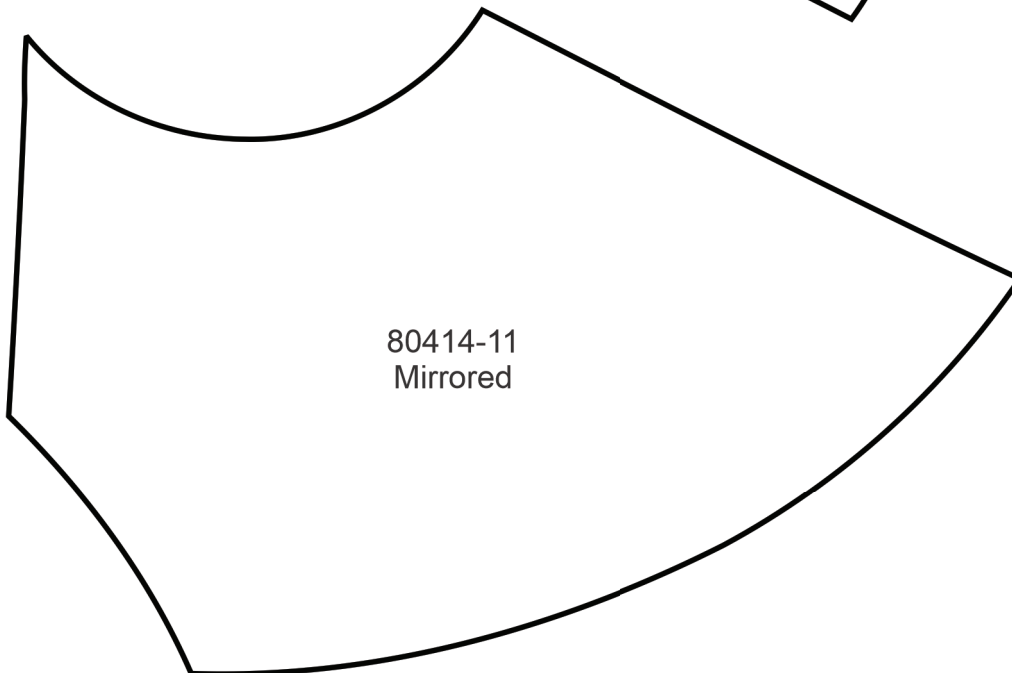
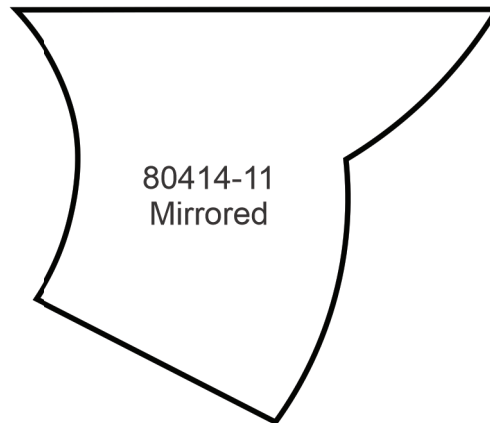
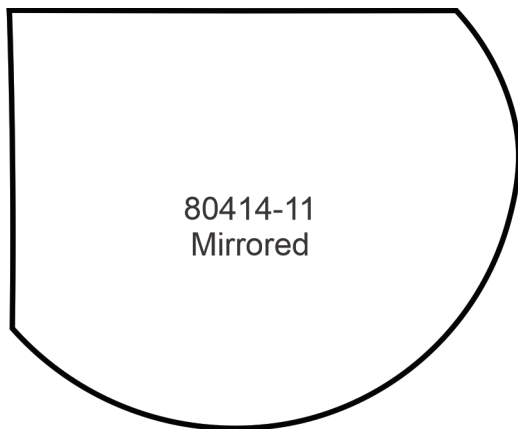
Print at 100%. No scaling. This box measures 1" x 1". Use the box as an accuracy guide when printing templates.



MIRRORED PATTERNS



Print at 100%. No scaling. This box measures 1" x 1". Use the box as an accuracy guide when printing templates.



MIRRORED PATTERNS



Print at 100%. No scaling. This box measures 1" x 1". Use the box as an accuracy guide when printing templates.

