



#82033
20 DESIGNS



SHARE JOY

PROJECT INSTRUCTIONS INCLUDED

It is a violation of Copyright law to make and distribute copies of electronic designs or artwork.
Electronic designs are licensed to the original purchaser for use at one location. ©2021 OESD, LLC. All rights reserved.

MATERIALS



Isacord Thread Colors

0704 Gold	2810 Orchid
1061 Taupe	3900 Cerulean
1200 Sunset Orange	3906 Pacific Blue
1730 Persimmon	4114 Danish Teal
1900 Geranium	5230 Bottle Green
2510 Roseate	5500 Limedrop
2530 Rose	5613 Light Kelly
2532 Pretty in Pink	



*** Project instructions included after design list.**

Note: One spool of 1000 meter thread is adequate for the project unless otherwise noted.

82033-01 Flower Jar Card

Size Inches:	Size mm:	Stitch Count:
7.00 X 5.00 in.	177.8 X 127.0 mm	7498 St.



	1. Card Placement Stitch.....	4114
	2. Jar	4114
	3. Pink Flower.....	2532
	4. Bright Green Detail.....	5500
	5. Rose Bud.....	1730
	6. Orange Foliage.....	1200
	7. Green Detail	5613
	8. Rose	1900
	9. Purple Flower	2510
	10. Dark Purple Flower Center.....	2810
	11. Yellow Stars.....	0704

DESIGNS



















Note: Some designs in this collection may have been created using unique special stitches and/or techniques. To preserve design integrity when rescaling or rotating designs in your software, always rescale or rotate designs using the handles directly on-screen.

FABRIC REQUIRED



82033-02 Flower Jar Zipper Pouch Large

	Size Inches:	Size mm:	Stitch Count:
S	7.37 X 5.09 in.	187.3 X 129.2 mm	9775 St.
M	8.19 X 5.65 in.	208.1 X 143.4 mm	10506 St.
L	10.65 X 7.34 in.	270.5 X 186.5 mm	12622 St.

	1. Zipper Placement Guide.....	1200
	2. Zipper Tackdown	1200
	3. Front Panel Top Tackdown	1200
	4. Front Panel Bottom Tackdown	1200
	5. Pink Flower.....	2532
	6. Purple Flower	2510
	7. Green Leaves.....	5500
	8. Ribbon	1730
	9. Stems	5500
	10. Swirls.....	0704
	11. Jar	4114
	12. Red Flower	1900
	13. Purple Flower Center	2810
	14. Butterfly	1200
	15. Back Panel Tackdown	1200
	16. Inner Lining Tackdown.....	1200

DESIGNS



Note: Some designs in this collection may have been created using unique special stitches and/or techniques. To preserve design integrity when rescaling or rotating designs in your software, always rescale or rotate designs using the handles directly on-screen.

82033-03 Flower Jars Tea Towel

Size Inches: Size mm: Stitch Count:
 5.75 X 4.48 in. 146.0 X 113.8 mm 9355 St.



■	1. Left Leaves and Stems.....	5613
■	2. Roses	1900
■	3. Middle Leaves and Stems	5500
■	4. Green Leaves.....	5613
■	5. Right Leaves and Stems	5500
■	6. Jars.....	4114
■	7. Red Flowers	1730
■	8. Green Stem and Leaf.....	5613
■	9. Tulips.....	2510

FABRIC REQUIRED



82033-04 Flowers Coffee Cozy

Size Inches: Size mm: Stitch Count:
 8.85 X 2.86 in. 224.7 X 72.8 mm 7685 St.

■	1. Fabric Placement Stitch	5613
■	2. Button and Elastic Placement	5613
■	3. Small Green Leaves.....	5613
■	4. Orange Flower.....	1200
■	5. Gold Leaf and Swirl.....	0704
■	6. Large Bright Green Leaf.....	5500
■	7. Red Flower Petals	1730
■	8. Red Flower Center	1900
■	9. Gold Detail.....	0704
■	10. Pink Flower.....	2532
■	11. Small Bright Green Leaves	5500
■	12. Rose.....	1900
■	13. Large Green Leaves.....	5613
■	14. Purple Petals.....	2510
■	15. Purple Center	2810
■	16. Seam Stitch.....	2810

DESIGNS



Note: Some designs in this collection may have been created using unique special stitches and/or techniques. To preserve design integrity when rescaling or rotating designs in your software, always rescale or rotate designs using the handles directly on-screen.

82033-05 House Plant Card

Size Inches: Size mm: Stitch Count:

7.00 X 5.00 in. 177.8 X 127.0 mm 5537 St.



 1. Card Placement Stitch.....	2532
 2. Pot Detail.....	2532
 3. Bright Green Leaves	5500
 4. Green Leaves.....	5613
 5. Pot.....	2510
 6. Seafoam Green Leaves and Swirl.....	5230
 7. Flower.....	2810
 8. Gold Detail.....	0704

DESIGNS



Note: Some designs in this collection may have been created using unique special stitches and/or techniques. To preserve design integrity when rescaling or rotating designs in your software, always rescale or rotate designs using the handles directly on-screen.

FABRIC REQUIRED



82033-06 House Plants Zipper Pouch Large

	Size Inches:	Size mm:	Stitch Count:
S	7.37 X 5.09 in.	187.3 X 129.2 mm	8539 St.
M	8.19 X 5.65 in.	208.1 X 143.4 mm	9124 St.
L	10.65 X 7.34 in.	270.5 X 186.5 mm	11467 St.

1.	Zipper Placement Guide.....	2810
2.	Zipper Tackdown	2810
3.	Front Panel Top Tackdown	2810
4.	Front Panel Bottom Tackdown	2810
5.	Seafoam Green Leaves	5230
6.	Green Leaves.....	5500
7.	Left Pot.....	2532
8.	Left Pot.....	2510
9.	Cactus Detail	5500
10.	Cactus	5613
11.	Right Pot Detail	2532
12.	Right Pot.....	2810
13.	Flower.....	2510
14.	Gold Detail.....	0704
15.	Backing Tackdown.....	2810
16.	Inner Lining Tackdown.....	2810

DESIGNS



Note: Some designs in this collection may have been created using unique special stitches and/or techniques. To preserve design integrity when rescaling or rotating designs in your software, always rescale or rotate designs using the handles directly on-screen.

82033-07 House Plants Tea Towel

Size Inches: Size mm: Stitch Count:
 5.90 X 4.87 in. 149.8 X 123.8 mm 6869 St.



■	1. Left Plant	5500
■	2. Left Pot	2532
■	3. Seafoam Green Plant.....	5230
■	4. Pink Detail	2532
■	5. Purple Pot.....	2510
■	6. Cactus	5613
■	7. Pink Flower.....	2532
■	8. Right Plant.....	5500
■	9. Gold Detail.....	0704
■	10. Middle Pot and Mug	2810
■	11. Heart and Purple Flowers.....	2510
■	12. Gold Linework	0704

FABRIC REQUIRED



82033-08 Succulent Coffee Cozy

Size Inches: Size mm: Stitch Count:
 8.85 X 2.86 in. 224.7 X 72.8 mm 3955 St.

■	1. Fabric Placement Stitch	5230
■	2. Button and Elastic Placement	5230
■	3. Leaf Detail	5230
■	4. Leaves.....	5613
■	5. Swirls.....	2810
■	6. Gold Detail.....	0704
■	7. Seam Stitch	0704

DESIGNS



Note: Some designs in this collection may have been created using unique special stitches and/or techniques. To preserve design integrity when rescaling or rotating designs in your software, always rescale or rotate designs using the handles directly on-screen.

82033-09 Sewing Card

Size Inches: 7.00 X 5.00 in. Size mm: 177.8 X 127.0 mm Stitch Count: 7829 St.



■	1. Card Placement Stitch.....	2532
■	2. Sewing Machine Detail.....	2532
■	3. Sewing Machine.....	2810
■	4. Lower Gold Leaf and Swirl.....	0704
■	5. Lower Seafoam Green Leaves.....	5230
■	6. Red Flower.....	1730
■	7. Green Leaves.....	5613
■	8. Upper Gold Leaves.....	0704
■	9. Upper Seafoam Green Leaf.....	5230
■	10. Pink Petals.....	2532
■	11. Blue Flower.....	4114
■	12. Purple Flower Center.....	2810
■	13. Blue Thread.....	4114
■	14. Spool and Stamen.....	3906

DESIGNS



Note: Some designs in this collection may have been created using unique special stitches and/or techniques. To preserve design integrity when rescaling or rotating designs in your software, always rescale or rotate designs using the handles directly on-screen.

FABRIC REQUIRED



82033-10 Sewing Zipper Pouch Large

	Size Inches:	Size mm:	Stitch Count:
S	7.37 X 5.09 in.	187.3 X 129.2 mm	7119 St.
M	8.19 X 5.65 in.	208.1 X 143.4 mm	7744 St.
L	10.65 X 7.34 in.	270.5 X 186.5 mm	9522 St.

1.	Zipper Placement Guide.....	5613
2.	Zipper Tackdown	5613
3.	Front Panel Top Tackdown	5613
4.	Front Panel Bottom Tackdown	5613
5.	Pincushion.....	1900
6.	Pincushion Detail.....	0704
7.	Pincushion Top	5613
8.	Seafoam Green Leaves	5230
9.	Lower Green Leaves	5613
10.	Pink Button and Pin.....	2532
11.	Upper Green Leaf.....	5613
12.	Red Flower	1730
13.	Purple Flower and Pin	2810
14.	Thread	4114
15.	Spool and Pin	3906
16.	Backing Tackdown.....	5613
17.	Inner Lining Tackdown.....	5613

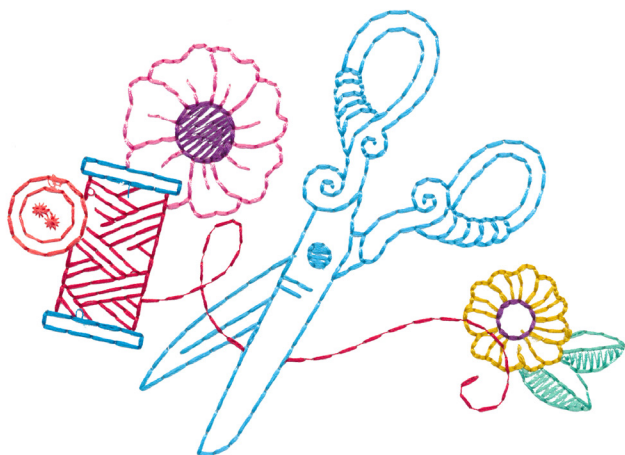
DESIGNS



Note: Some designs in this collection may have been created using unique special stitches and/or techniques. To preserve design integrity when rescaling or rotating designs in your software, always rescale or rotate designs using the handles directly on-screen.

82033-11 Sewing Tea Towel

Size Inches: 5.99 X 4.41 in. Size mm: 152.1 X 111.9 mm Stitch Count: 5361 St.



■	1. Scissors.....	4114
■	2. Seafoam Green Leaves	5230
■	3. Gold Flower.....	0704
■	4. Pink Flower.....	2532
■	5. Flower Centers	2810
■	6. Thread.....	1900
■	7. Spool.....	3906
■	8. Button.....	1730

FABRIC REQUIRED



82033-12 Sewing Coffee Cozy

Size Inches: 8.85 X 2.86 in. Size mm: 224.7 X 72.8 mm Stitch Count: 4112 St.

■	1. Fabric Placement Stitch	2532
■	2. Button and Elastic Placement	2532
■	3. Pink Thread.....	2532
■	4. Aqua Thread.....	4114
■	5. Red Thread	1730
■	6. Spools	3906
■	7. Yellow Button.....	0704
■	8. Red Button	1900
■	9. Seafoam Green Button.....	5230
■	10. Seam Stitch.....	5230

DESIGNS



Note: Some designs in this collection may have been created using unique special stitches and/or techniques. To preserve design integrity when rescaling or rotating designs in your software, always rescale or rotate designs using the handles directly on-screen.

82033-13 Coffee Card



Size Inches: 7.00 X 5.00 in. Size mm: 177.8 X 127.0 mm Stitch Count: 3804 St.

■ 1. Card Placement Stitch.....	2532
■ 2. Pink Detail	2532
■ 3. Steam	1061
■ 4. Yellow Detail	0704
■ 5. Table.....	1061
■ 6. Heart Outline	2510
■ 7. Blue Mug	3900
■ 8. Heart.....	2532
■ 9. Bright Blue Detail.....	4114

FABRIC REQUIRED



82033-14 Coffee Zipper Pouch Large

Size Inches: Size mm: Stitch Count:

S 7.37 X 5.09 in. 187.3 X 129.2 mm 6126 St.

M 8.19 X 5.65 in. 208.1 X 143.4 mm 6713 St.

L 10.65 X 7.34 in. 270.5 X 186.5 mm 8632 St.

■ 1. Zipper Placement Guide.....	3906
■ 2. Zipper Tackdown	3906
■ 3. Front Panel Top Tackdown	3906
■ 4. Front Panel Bottom Tackdown	3906
■ 5. Pink Hearts	2532
■ 6. Steam	1061
■ 7. Pink Mug Detail	2532
■ 8. Gold Mug Detail.....	0704
■ 9. Mug	4114
■ 10. Blue Heart and Mug Detail	3906
■ 11. Purple Hearts and Mug Detail	2510
■ 12. Backing Tackdown.....	3906
■ 13. Inner Lining Tackdown.....	3906

DESIGNS



Note: Some designs in this collection may have been created using unique special stitches and/or techniques. To preserve design integrity when rescaling or rotating designs in your software, always rescale or rotate designs using the handles directly on-screen.

82033-15 Coffee Tea Towel

Size Inches: 6.04 X 4.86 in. Size mm: 153.5 X 123.4 mm Stitch Count: 4650 St.



1. Steam	1061
2. Gold Mug	0704
3. Pink Detail	2532
4. Rear Blue Mug	4114
5. Pink Heart	2532
6. Purple Heart	2510
7. Gold Detail on Blue Mug	0704
8. Front Blue Mug	3906
9. Purple Mug	2510

FABRIC REQUIRED



82033-16 Coffee Cozy

Size Inches: 8.85 X 2.86 in. Size mm: 224.7 X 72.8 mm Stitch Count: 3866 St.

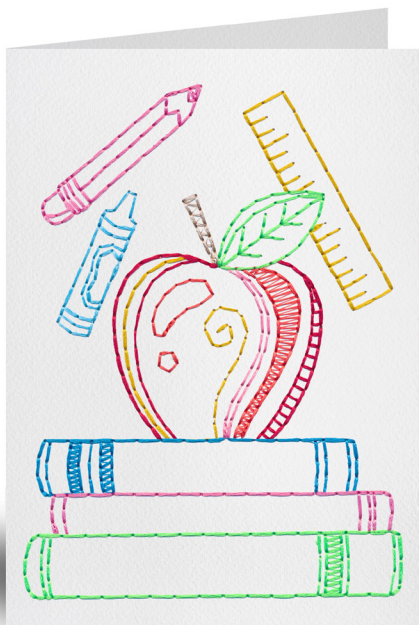
1. Fabric Placement Stitch	2532
2. Button and Elastic Placement	2532
3. Heart	2532
4. Purple Detail	2510
5. Blue Detail	4114
6. Gold Accent	0704
7. Swirls	1061
8. Mug	3906
9. Seam Stitch	3906

DESIGNS



Note: Some designs in this collection may have been created using unique special stitches and/or techniques. To preserve design integrity when rescaling or rotating designs in your software, always rescale or rotate designs using the handles directly on-screen.

82033-17 Teacher Card



Size Inches: 7.00 X 5.00 in. Size mm: 177.8 X 127.0 mm Stitch Count: 4578 St.

1. Card Placement Stitch.....	1061
2. Stem.....	1061
3. Yellow Ruler and Apple Detail	0704
4. Pink Apple Detail	2530
5. Apple Detail	1730
6. Apple	1900
7. Leaf	5500
8. Crayon.....	4114
9. Pencil.....	2532
10. Blue Book	3906
11. Pink Book	2532
12. Green Book	5500

FABRIC REQUIRED



82033-18 Apple Zipper Pouch Large

Size Inches: Size mm: Stitch Count:

S 7.37 X 5.09 in. 187.3 X 129.2 mm 7494 St.

M 8.19 X 5.65 in. 208.1 X 143.4 mm 8120 St.

L 10.65 X 7.34 in. 270.5 X 186.5 mm 10069 St.

1. Zipper Placement Guide.....	1900
2. Zipper Tackdown	1900
3. Front Panel Top Tackdown	1900
4. Front Panel Bottom Tackdown	1900
5. Apple	1900
6. Apple Detail	1730
7. Stem.....	1061
8. Gold Leaf Detail.....	0704
9. Leaves.....	5500
10. Pink Flowers.....	2532
11. Gold Flower Centers and Apple Detail	0704
12. Backing Tackdown.....	1900
13. Inner Lining Tackdown.....	1900

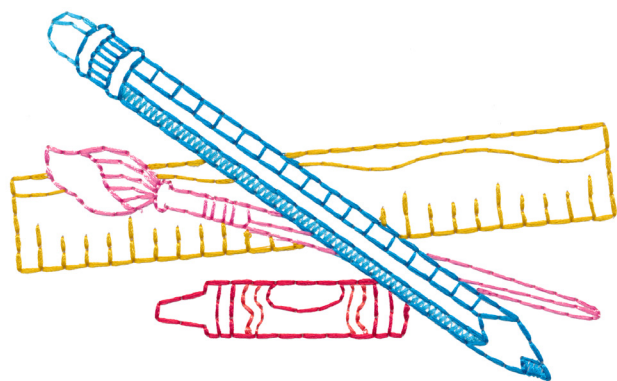
DESIGNS



Note: Some designs in this collection may have been created using unique special stitches and/or techniques. To preserve design integrity when rescaling or rotating designs in your software, always rescale or rotate designs using the handles directly on-screen.

82033-19 School Supplies Tea Towel

Size Inches: Size mm: Stitch Count:
 5.83 X 2.96 in. 148.1 X 75.2 mm 3868 St.



■	1. Crayon Detail.....	1730
■	2. Crayon.....	1900
■	3. Pencil Detail	4114
■	4. Pencil.....	3906
■	5. Brush.....	2532
■	6. Ruler.....	0704

FABRIC REQUIRED

82033-20 School Book Coffee Cozy

Size Inches: Size mm: Stitch Count:
 8.85 X 2.86 in. 224.7 X 72.8 mm 4573 St.



■	1. Fabric Placement Stitch	2532
■	2. Button and Elastic Placement	2532
■	3. Pencil.....	2532
■	4. Continents	5500
■	5. Planet	4114
■	6. Apple	1730
■	7. Pages	4114
■	8. Book	3906
■	9. Swirls.....	0704
■	10. Seam Stitch	0704

CARD SUPPLIES



Stabilizers

- OESD StabilStick TearAway
- OESD Fuse and Seal CutAway

Fabrics/Textiles

- Start Here by OESD folded greeting card

Notion & Tools

- OESD Expert Embroidery Tape TearAway
- OESD Perfect Embroidery Press Cloth

Isacord Thread Colors

- Per thread chart
- OESD Bobbin Thread

EMBROIDERY



Step 1

- Hoop a piece of StabilStick TearAway paper (shiny) side up



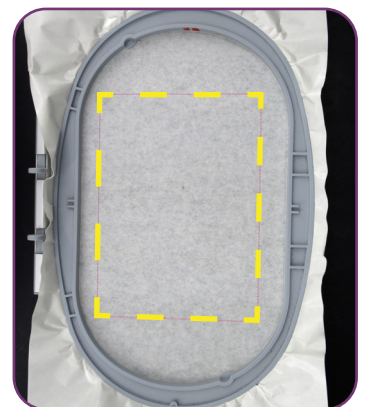
Step 2

- Use a pin or needle to score the paper.
- Remove the paper to reveal the adhesive surface.



Step 3

- Stitch Machine Step 1, Card Placement Stitch.



EMBROIDERY



Step 4

- Place the front of the card face up within the placement stitch, lining up all edges.



Step 5

- Stitch the remaining machine steps, per thread chart.



Step 6

- Remove hoop from the machine and carefully remove the stabilizer and card from the hoop.
- Turn the project over so the wrong side of the card is facing up.
- Note: The stabilizer is a tear away, but cutting it away causes less bending or creasing of the cardstock.
- Fold the stabilizer back onto itself exposing about 1/4" of the card.
- Trim the stabilizer with scissors.
- Trim all four sides.



EMBROIDERY



Step 7

- Cut another card in half and iron on Fuse and Seal with a medium warm iron.



Step 8

- Let cool, then gently peel back from the Fuse and Seal.
- Line up card over the bobbin side of card and press with a warm iron to fuse.
- Tip: The paper that was removed from the Fuse and Seal can be placed over the card to protect it from the heat of the iron.



POUCH SUPPLIES



Stabilizers

- OESD Medium Weight TearAway
- OESD Fusible Woven

Fabrics/Textiles

- ¼ yd quilters cotton fabric. See chart for exact dimensions.
- Note: Fabric sizes are estimates and may result in overage.

Notion & Tools

- OESD Expert Embroidery Tape TearAway
- OESD Expert Point and Press Tool
- OESD Perfect Embroidery Press Cloth
- OESD Fuse and Seal (optional)
- Polyester or nylon zipper at least 2" larger than opening (NO metal zipper teeth)

Isacord Thread Colors

- Per thread chart
- OESD Bobbin Thread

FABRIC CUTTING CHART



Bag Size	Front Panel Top Cut 1 of outer fabric and 1 of lining	Front Panel Bottom Cut 1 of outer fabric and 1 of lining	Back Cut 1 of outer fabric and 1 of lining
Small Vertical Zipper: 8"	6" x 2.5" Cut Fusible Woven 6" x 1.25"	6" x 13.5" Cut Fusible Woven 6" x 6.75"	6" x 8.5" Cut Fusible Woven 6" x 8.5"
Medium Vertical Zipper: 9"	7" x 3.5" Cut Fusible Woven 7" x 1.75"	7" x 14" Cut Fusible Woven 7" x 7"	7" x 9" Cut Fusible Woven 7" x 9"
Large Vertical Zipper: 12"	8.5" x 4" Cut Fusible Woven 8.5" x 2"	8.5" x 19" Cut Fusible Woven 8.5" x 9.5"	8.5" x 15" Cut Fusible Woven 8.5" x 15"

EMBROIDERY



Prep

- Press Bottom Front, Top Front, Top Front Lining and Bottom Front Lining in half wrong sides together, lengthwise.
- Fusible Woven is applied only to the outer fabrics, not the lining. Open fabrics and press Fusible Woven to one half of the wrong side of the fabric, lining up the Fusible Woven with the fold of the fabric.
- Re-fold outer fabrics and press.



Step 1

- Design used for this project is 82033-10.
- Hoop a piece of OESD Medium Weight TearAway.
- Stitch Machine Step 1, Zipper Placement Guide



Step 2

- Place the zipper, right side up, within the Placement Guide and tape to hold in place.
- Metal ends must be outside of the stitching area.
- Stitch Machine Step 2, Zipper Tackdown.



EMBROIDERY



Step 3

- Place the folded edge of the top front next to the zipper teeth on the top (top edge) of the zipper.
- Cover the zipper tackdown line, but not the zipper teeth.
- Tape in place to secure.



Step 4

- Remove the hoop from the machine, but do NOT remove the project from the hoop.
- Turn hoop over and place the folded edge of the top front lining along the zipper tackdown, just barely covering the line.
- Avoid pushing too hard on the stabilizer to prevent it from dislodging from the hoop.
- Tape in place to secure.
- Return the hoop to the machine.



Step 5

- Stitch Machine Step 3, the Front Panel Top Tackdown.



EMBROIDERY



Step 6

- Remove the hoop from the machine, but NOT the project from the hoop.
- Turn hoop over and lay face down on a flat surface.
- Locate the lower Zipper Tackdown stitch which is right above the lower Zipper Placement Line.
- Place the folded edge of the front lining fabric along the zipper tackdown line.
- Gently secure with tape on the fold. (Do not press too hard!)
- Tip: The tape acts as a 'hinge' for the next step.



Step 7

- Gently open the folded fabric. The tape on the fold will hold the center of the fabric along the stitching line.
- Tape the top, bottom, and sides to hold fabric in place during stitching.
- Return the hoop to the machine, being careful that the fabric under the hoop is flat and smooth.



Step 8

- Place the bottom panel with the Fusible Woven side on top.
- Tape in place to secure.



EMBROIDERY



Step 9

- Stitch Machine Step 4, Front Panel Bottom Tackdown.



Step 10

- Stitch the remaining machine steps, per thread chart; STOPPING BEFORE Backing Tackdown.



Step 11

- Remove the hoop from the machine, leaving the project in the hoop.
- Turn the hoop over and remove the side tapes from the Front Bottom Panel Lining.
- Fold the Front Panel Bottom Lining back into position, wrong sides together along the original fold line.
- Tape the sides as shown to hold in place for final construction.
- Return the hoop to the machine.



EMBROIDERY



Step 12

- Unzip the zipper halfway!
- Not all the way, just HALFWAY!
- **Note:** This is the most important step in the whole project!! Without it, you will need a seam ripper!



Step 13

- Position the back fabric, right side down over the front of the zipper pouch completely covering the stitched pieces.



Step 14

- Stitch Machine Step 15, Backing Tackdown.



EMBROIDERY



Step 15

- Gently remove the hoop from the machine, but NOT the project from the hoop.
- Turn the hoop over and position the back lining, face down on the back of the hoop.
- Tape fabric to hold it in place.
- Return the hoop to the machine.



Step 16

- Stitch Machine Step 16, Inner Lining Tackdown.
- Note the “neck” opening in the top for turning the back lining.



Step 17

- The stitching is now complete.
- Remove the project from the hoop and trim approximately ¼” from the outermost stitching line as shown.
- DO NOT cut off the “neck” opening at the top. Trim across the opening above the vertical lines of stitching.
- Clip each inner corner to, but not through, the stitches in the corner.



EMBROIDERY



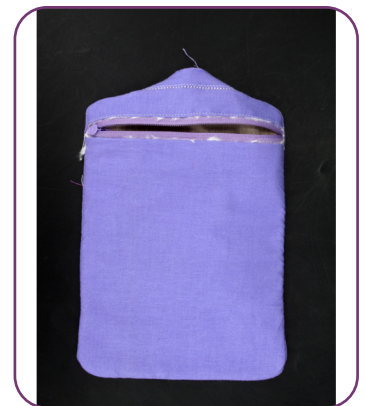
Step 18

- Turn the pouch inside out to show the right side of the lining fabric.
- Use the large ball of the Expert Point and Press tool to push out the corners and edges.



Step 19

- Remove the excess stabilizer from the zipper area.
- Unzip the zipper completely.



Step 20

- Tuck the “neck” area to the inside of the bag, press.
- Close the opening by hand stitching, with double sided fusible tape, or with a piece of Fuse and Seal cut to size.



EMBROIDERY



Step 21

- Turn the pouch right side out, through the zipper. Use the Expert Point and Press Tool to help push out the corners and sides.
- Press front side down on the Perfect Embroidery Press Cloth.



COZY SUPPLIES



Stabilizers

- OESD Light Weight TearAway
- OESD Fusible Woven

Fabrics/Textiles

- 2 - 4" x 10" pieces fabric
- 1 - 4" x 10" batting or Insul-Bright
- 4" piece 1/8" elastic
- 1 - button

Notion & Tools

- OESD Expert Embroidery Tape TearAway
- OESD Expert Point and Press Tool
- OESD Perfect Embroidery Press Cloth
- OESD Fuse and Seal (Optional)

Isacord Thread Colors

- Per thread chart
- OESD Bobbin Thread

EMBROIDERY



Prep

- Press Fusible Woven to the wrong side of (1) 4" x 10" piece of fabric.



Step 1

- Hoop one layer of OESD Medium Weight TearAway.



Step 2

- Load selected design into the machine.
- Example design is 82033-04.
- Thread the machine per the thread chart.
- Place hoop on the machine.
- Stitch Machine Step 1, Fabric Placement Stitch.



EMBROIDERY



Step 3

- Place the 4" x 10" fabric with OESD Fusible Woven, right side up over the Placement Stitch.
- Tape in place to secure.



Step 4

- Continue to stitch the design.
- Stop before Machine Step 16, Seam Stitch.



Step 5

- Fold elastic piece in half and place over elastic placement on the bottom half of the wrap with cut edges to the right.
- The raw edge lines should extend $\frac{1}{4}$ " past the placement line and away from the design area.
- Tape in place to secure.



EMBROIDERY



Step 6

- Place the 4" x 10" fabric right side down covering the entire design.



Step 7

- Place batting/Insul-Bright over fabric covering the entire design.



Step 8

- Stitch Machine Step 16, Seam Stitch.



EMBROIDERY



Step 9

- The stitching is now complete.
- Remove the project from the hoop and trim approximately $\frac{1}{4}$ " from the outermost stitching line as shown.
- DO NOT cut off the "neck" opening at the top. Trim across the opening above the vertical lines of stitching.
- Clip each inner corner to, but not through, the stitches in the corner.



Step 10

- Turn the cup wrap right side out.
- Use OESD Expert Point and Press Tool to help push out the corners and sides.
- Tuck the "neck" area to the inside of the cup wrap, press.
- Close the opening by hand stitching, with double sided fusible tape, or with a piece of OESD Fuse and Seal cut to size.



Step 11

- Sew a decorative button on the button placement stitch.
- Loop the elastic around the button to keep the wrap in place.



TOWEL SUPPLIES



Stabilizers

- OESD Ultra Clean and Tear Plus

Supplies and Notions

- White hand towel
- 3" wide x WOF of cotton fabric in complimentary color
- OESD Perfect Embroidery Press Cloth
- Thread to match the fabric
- Water Soluble Marking Pen

Isacord Thread Colors

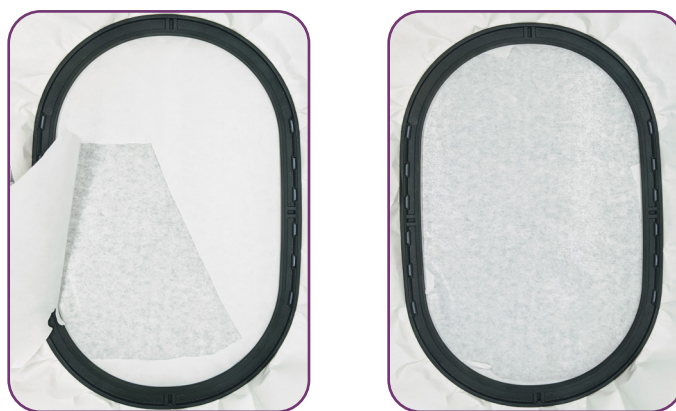
- Per thread chart
- OESD Bobbin Thread

EMBROIDERY



Step 1

- Hoop OESD Ultra Clean and Tear Plus, paper (shiny) side up.
- Score paper with a needle or pin and remove the paper to reveal the adhesive surface.



Step 2

- With right sides together, fold towel lengthwise to find vertical center.
- Finger press and open.
- Determine how far above the hem you want the center of the design and mark the towel with a removable marker.

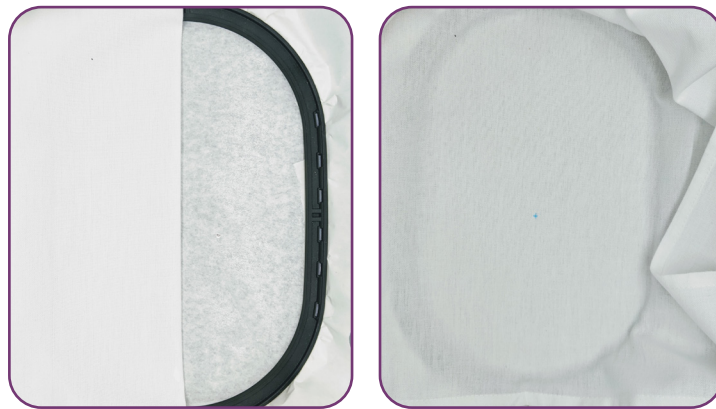


EMBROIDERY



Step 3

- Refold the towel right sides together and align the fold with the center markings at the top and bottom of the hoop.
- Press to adhere the towel to the stabilizer.
- Open the towel and finger press the towel to the stabilizer.



Step 4

- Place the hoop on the machine, be careful that none of the towel is under the hoop.
- Select the desired design (design used for project is 82033-15).
- Use the machine alignment tools to center the design with the mark.
- Stitch the design, changing colors as indicated in the thread chart.



EMBROIDERY



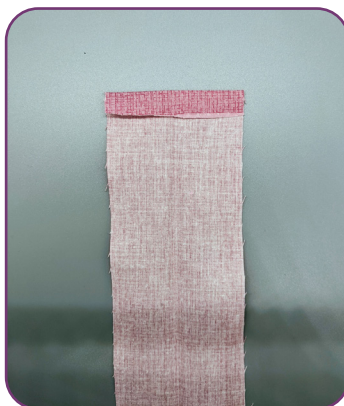
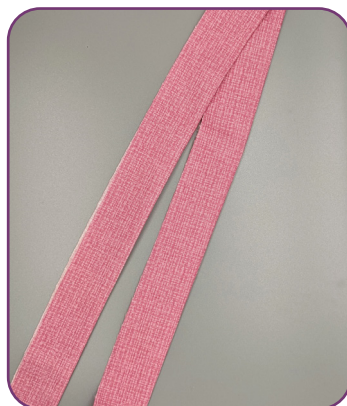
Step 5

- Remove the hoop from the machine and the project from the hoop.
- Gently tear the stabilizer from the project.
- Lay the project face down on an OESD Perfect Embroidery Press Cloth and press.
- Note: OESD Ultra Clean and Tear Plus has a water-soluble adhesive that releases from the fabric with steam.
- Place towel right side up and mark a horizontal line $1\frac{3}{4}$ " from the bottom hem of the towel.



Step 6

- Fold the 3" strip of fabric wrong sides together and press.
- Measure the towel and add 1" to the measurement. Cut the strip to that size.
- Open with the wrong side facing up.
- Turn $\frac{1}{2}$ " toward the wrong side on each short end of the strip and press.
- Re-fold and press.



EMBROIDERY



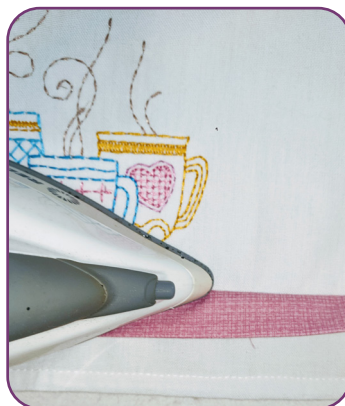
Step 7

- Place raw edges of the fabric strip along the marked line, with the folded edge on the design side.
- Pin in place.



Step 8

- Stitch to the towel with a $\frac{1}{2}$ " seam allowance.
- Press the strip toward the hem of the towel.



EMBROIDERY



Step 9

- Topstitch or use a blanket stitch on each side of the strip.

