



MATERIALS



Isacord Thread Colors

0010 Silky White
0134 Smoky
0142 Sterling
0630 Buttercup
0660 Vanilla
1200 Sunset Orange
1220 Apricot
1301 Paprika
1900 Geranium
1912 Winterberry
2101 Country Red
2363 Carnation
2508 Hot Pink
2550 Soft Pink
2920 Purple
3114 Purple Twist
3130 Dawn of Violet
5115 Baccarat Green
5440 Mint
5740 Mint
5833 Limabean
5912 Erin Green

***Applique instructions included after design list**

DESIGNS



Note: Some designs in this collection may have been created using unique special stitches and/or techniques. To preserve design integrity when rescaling or rotating designs in your software, always rescale or rotate designs using the handles directly on-screen.

90021-01 Curiouser & Curiouser Flower 1

| Size Inches: | Size mm: | Stitch Count: |
|------------------------|-------------------------|------------------|
| 6.25 X 6.45 in. | 158.7 X 163.8 mm | 54729 St. |
| 7.76 X 8.01 in. | 197.0 X 203.4 mm | 72785 St. |



| | | |
|--------------------------|---------------------------------------|------|
| <input type="checkbox"/> | 1. Design Underlay Match Fabric | 0010 |
| <input type="checkbox"/> | 2. Light Green Leaf Shading..... | 5740 |
| <input type="checkbox"/> | 3. Medium Green Leaf Shading | 5912 |
| <input type="checkbox"/> | 4. Dark Green Leaf Shading | 5833 |
| <input type="checkbox"/> | 5. Dark Gray Leaf Shading | 0134 |
| <input type="checkbox"/> | 6. Light Red Shading..... | 1900 |
| <input type="checkbox"/> | 7. Medium Red Shading | 2101 |
| <input type="checkbox"/> | 8. Dark Red Shading | 1912 |
| <input type="checkbox"/> | 9. Dark Pink Shading..... | 2508 |
| <input type="checkbox"/> | 10. Medium Pink Shading..... | 2550 |
| <input type="checkbox"/> | 11. Medium Purple Shading..... | 2920 |
| <input type="checkbox"/> | 12. Light Purple Shading | 3130 |
| <input type="checkbox"/> | 13. Dark Purple Shading..... | 3114 |
| <input type="checkbox"/> | 14. Light Pink Shading | 2363 |
| <input type="checkbox"/> | 15. Dark Gray Leaf Shading | 0134 |
| <input type="checkbox"/> | 16. Dark Yellow Shading..... | 0630 |
| <input type="checkbox"/> | 17. Light Yellow Shading..... | 0660 |
| <input type="checkbox"/> | 18. White Shading..... | 0010 |

DESIGNS



Note: Some designs in this collection may have been created using unique special stitches and/or techniques. To preserve design integrity when rescaling or rotating designs in your software, always rescale or rotate designs using the handles directly on-screen.

90021-02 Curiouser & Curiouser Flower Wreath

Size Inches: Size mm: Stitch Count:
9.29 X 8.25 in. 236.0 X 209.5 mm 54651 St.



- 1. Pale Green Detail5740
- 2. Light Blue Detail.....5440
- 3. Blue Detail 5115
- 4. Dark Gray Detail..... 0134
- 5. Medium Pink Detail..... 2550
- 6. Light Pink Flowers2363
- 7. Dark Pink Detail..... 2508
- 8. Medium Green Detail5912
- 9. Dark Green Detail.....5833
- 10. Dark Gray Detail..... 0134
- 11. Light Orange Detail..... 1220
- 12. Dark Orange Detail 1301
- 13. Dark Red Detail1912
- 14. Light Pink Highlights2363

90021-03 Curiouser & Curiouser Flower Floral Bunny

Size Inches: Size mm: Stitch Count:
8.36 X 6.19 in. 212.3 X 157.2 mm 34036 St.



- 1. Single Color Design 2550

DESIGNS



Note: Some designs in this collection may have been created using unique special stitches and/or techniques. To preserve design integrity when rescaling or rotating designs in your software, always rescale or rotate designs using the handles directly on-screen.

FABRIC REQUIRED

90021-04 Curiouser & Curiouser Tea Cup Applique

Size Inches: Size mm: Stitch Count:
8.96 X 6.02 in. 227.7 X 153.0 mm 35653 St.



- 1. Gray Fabric Placement Stitch..... 5440
- 2. Cut Line and Tackdown..... 5440
- 3. Green Detail 5440
- 4. Light Purple Detail 3130
- 5. Gray Cover Stitch..... 0142
- 6. Dark Purple Cover Stitch and Detail 3114
- 7. Heart 3114

90021-05 Curiouser & Curiouser Top Hat

Size Inches: Size mm: Stitch Count:
4.75 X 5.42 in. 120.6 X 137.7 mm 21125 St.



- 1. Gray Background Leaves..... 0142
- 2. Light Pink Detail 2550
- 3. White Detail..... 0010
- 4. Dark Pink Detail..... 2508
- 5. Yellow Detail..... 0630
- 6. Medium Green Detail 5912
- 7. Light Green Detail..... 5740
- 8. Orange Detail..... 1220
- 9. Gray Front Leaves 0142
- 10. Dark Gray Detail..... 0134
- 11. Red Detail 1900

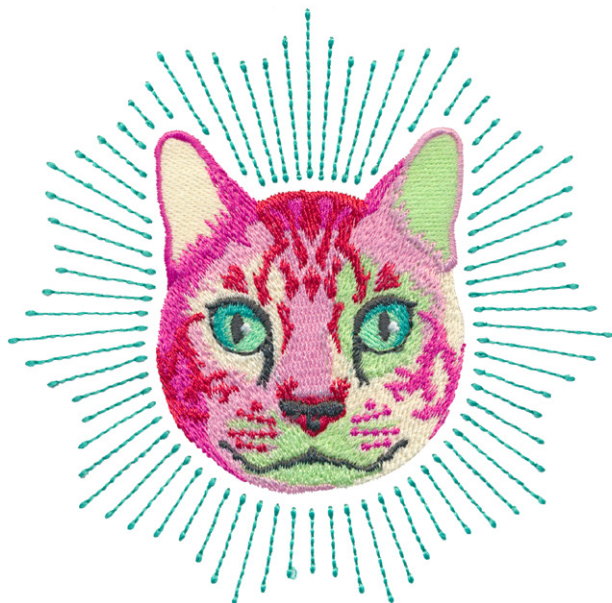
DESIGNS



Note: Some designs in this collection may have been created using unique special stitches and/or techniques. To preserve design integrity when rescaling or rotating designs in your software, always rescale or rotate designs using the handles directly on-screen.

90021-06 Curiouser & Curiouser Cat

Size Inches: Size mm: Stitch Count:
4.61 X 4.66 in. **117.0 X 118.4 mm** **16056 St.**



- 1. Light Blue Eyes 5440
- 2. Dark Blue Eyes..... 5115
- 3. Light Yellow Detail..... 0660
- 4. Light Green Detail..... 5740
- 5. Medium Pink Detail..... 2550
- 6. Dark Pink Detail..... 2508
- 7. Red Detail 1900
- 8. Dark Gray Detail..... 0134
- 9. White Detail..... 0010
- 10. Blue Rays..... 5115

90021-07 Curiouser & Curiouser Tea Cups

Size Inches: Size mm: Stitch Count:
4.15 X 4.73 in. **105.5 X 120.0 mm** **15243 St.**



- 1. Gray Detail 0142
- 2. Light Green Detail..... 5740
- 3. Dark Pink Detail..... 2508
- 4. Dark Orange Detail 1301
- 5. Light Pink Detail 2550
- 6. Red Detail 1900
- 7. Light Blue Detail..... 5440
- 8. Light Orange Detail..... 1220
- 9. Yellow Detail..... 0630
- 10. Dark Orange Detail 1301
- 11. White Detail..... 0010

DESIGNS



Note: Some designs in this collection may have been created using unique special stitches and/or techniques. To preserve design integrity when rescaling or rotating designs in your software, always rescale or rotate designs using the handles directly on-screen.

90021-08 Curiouser & Curiouser Tea Cup

Size Inches: Size mm: Stitch Count:
3.02 X 4.50 in. 76.6 X 114.2 mm 21249 St.



- 1. Dark Blue Detail 5115
- 2. Light Green Detail..... 5740
- 3. Medium Green Detail 5912
- 4. Dark Green Detail..... 5833
- 5. Light Blue Detail..... 5440
- 6. Dark Purple Detail..... 3114

90021-09 Curiouser & Curiouser Floral Bunnies

Size Inches: Size mm: Stitch Count:
4.20 X 3.93 in. 106.7 X 99.7 mm 11789 St.



- 1. Single Color Design 2550

DESIGNS



Note: Some designs in this collection may have been created using unique special stitches and/or techniques. To preserve design integrity when rescaling or rotating designs in your software, always rescale or rotate designs using the handles directly on-screen.

90021-10 Curiouser & Curiouser Bottle

Size Inches: Size mm: Stitch Count:
2.76 X 4.62 in. **70.0 X 117.3 mm** **7798 St.**



- 1. Orange Detail 1220
- 2. Yellow Detail 0630
- 3. Light Green Detail 5740
- 4. Light Blue Detail 5440
- 5. Dark Blue Bottle Detail 5115
- 6. White Detail 0010
- 7. Dark Blue Linework 5115
- 8. Dark Purple Detail 2508
- 9. Red Detail 1900
- 10. Dark Gray Detail 0134
- 11. White Lettering 0010

90021-11 Curiouser & Curiouser Flower Border

Size Inches: Size mm: Stitch Count:
9.76 X 0.90 in. **247.8 X 22.8 mm** **6863 St.**

- 1. Medium Pink Detail 2550
- 2. Light Green Detail 5740
- 3. Light Pink Detail 2363
- 4. Red Detail 1900
- 5. Light Orange Detail 1200
- 6. Yellow Detail 0630



DESIGNS



Note: Some designs in this collection may have been created using unique special stitches and/or techniques. To preserve design integrity when rescaling or rotating designs in your software, always rescale or rotate designs using the handles directly on-screen.

90021-12 Curiouser & Curiouser Flower 2

Size Inches: Size mm: Stitch Count:
3.47 X 4.81 in. 88.3 X 122.3 mm 16497 St.



- 1. Light Green Detail.....5740
- 2. Medium Green Detail5912
- 3. Medium Pink Detail..... 2550
- 4. Dark Pink Detail..... 2508
- 5. Red Detail1900
- 6. Light Blue Detail..... 5440

90021-13 Curiouser & Curiouser Flower 3

Size Inches: Size mm: Stitch Count:
3.67 X 3.52 in. 93.3 X 89.4 mm 14122 St.



- 1. Dark Orange Detail 1301
- 2. Light Orange Detail..... 1220
- 3. Light Blue Detail.....5440
- 4. Light Purple Detail 3130
- 5. Medium Purple Detail..... 2920
- 6. Light Green Detail.....5740

DESIGNS



Note: Some designs in this collection may have been created using unique special stitches and/or techniques. To preserve design integrity when rescaling or rotating designs in your software, always rescale or rotate designs using the handles directly on-screen.

90021-14 Curiouser & Curiouser Flower 4

Size Inches: Size mm: Stitch Count:
2.97 X 3.27 in. **75.3 X 83.1 mm** **12455 St.**



| | | |
|---|---------------------------------|------|
|  | 1. Pale Green Detail | 5740 |
|  | 2. Light Blue Detail..... | 5440 |
|  | 3. Blue Detail..... | 5115 |
|  | 4. Dark Gray Detail..... | 0134 |
|  | 5. Medium Pink Detail..... | 2550 |
|  | 6. Dark Pink Detail..... | 2508 |
|  | 7. Medium Green Detail | 5912 |
|  | 8. Dark Green Detail..... | 5833 |
|  | 9. Dark Gray Detail..... | 0134 |
|  | 10. Light Orange Detail..... | 1220 |
|  | 11. Dark Orange Detail | 1301 |
|  | 12. Dark Red Detail | 1912 |
|  | 13. Light Pink Highlights | 2363 |

90021-15 Curiouser & Curiouser Flower 5

Size Inches: Size mm: Stitch Count:
3.98 X 2.19 in. **101.1 X 55.7 mm** **8143 St.**



| | | |
|---|---------------------------------|------|
|  | 1. Pale Green Detail | 5740 |
|  | 2. Light Blue Detail..... | 5440 |
|  | 3. Blue Detail..... | 5115 |
|  | 4. Dark Gray Detail..... | 0134 |
|  | 5. Medium Pink Detail..... | 2550 |
|  | 6. Dark Pink Detail..... | 2508 |
|  | 7. Medium Green Detail | 5912 |
|  | 8. Dark Green Detail..... | 5833 |
|  | 9. Light Orange Detail..... | 1220 |
|  | 10. Dark Orange Detail | 1301 |
|  | 11. Dark Red Detail | 1912 |
|  | 12. Light Pink Highlights | 2363 |

DESIGNS



Note: Some designs in this collection may have been created using unique special stitches and/or techniques. To preserve design integrity when rescaling or rotating designs in your software, always rescale or rotate designs using the handles directly on-screen.

90021-16 Curiouser & Curiouser Girl

Size Inches: Size mm: Stitch Count:
2.90 X 2.99 in. **73.7 X 75.8 mm** **5518 St.**

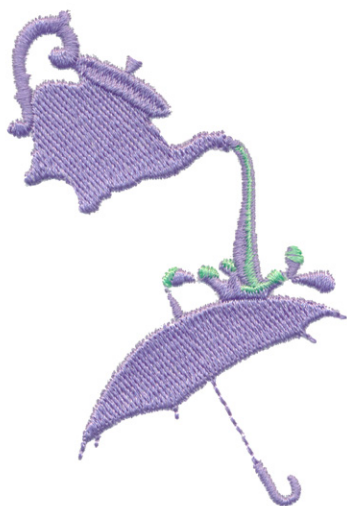
- 1. Yellow Detail.....0630
- 2. Dark Pink Detail..... 2508



90021-17 Curiouser & Curiouser Tea Pot

Size Inches: Size mm: Stitch Count:
3.50 X 2.36 in. **88.8 X 59.8 mm** **3741 St.**

- 1. Light Purple Detail 3130
- 2. Light Blue Detail..... 5440



DESIGNS



Note: Some designs in this collection may have been created using unique special stitches and/or techniques. To preserve design integrity when rescaling or rotating designs in your software, always rescale or rotate designs using the handles directly on-screen.

90021-18 Curiouser & Curiouser Pocket Watch

Size Inches: Size mm: Stitch Count:
3.16 X 2.98 in. **80.3 X 75.6 mm** **5724 St.**



- 1. Light Purple Detail 3130
- 2. Dark Purple Detail.....3114

90021-19 Curiouser & Curiouser Key

Size Inches: Size mm: Stitch Count:
2.92 X 1.94 in. **74.3 X 49.4 mm** **2105 St.**



- 1. Single Color Design5912

DESIGNS



Note: Some designs in this collection may have been created using unique special stitches and/or techniques. To preserve design integrity when rescaling or rotating designs in your software, always rescale or rotate designs using the handles directly on-screen.

90021-20 Curiouser & Curiouser Book

| | | |
|------------------------|-----------------------|-----------------|
| Size Inches: | Size mm: | Stitch Count: |
| 2.28 X 2.48 in. | 57.8 X 63.1 mm | 6057 St. |



- 1. Light Orange Detail..... 1220
- 2. Red Detail1900

MATERIALS



Stabilizer

- OESD Fusible Woven
- OESD Ultra Clean and Tear
- OESD Heavy Weight TearAway

Fabric/Textiles

- Fabric requirements will vary by design.
- The design we've used in the example, 90021-04, is 8" x 11" Gray Cotton Fabric.
- Note: Fabric sizes are estimates and may result in overage.

Notions & Tools

- Expert Embroidery Tape TearAway
- Perfect Embroidery Press Cloth
- Organ Needle: 80/12 Embroidery Sharp

Isacord Thread Colors

- As per thread chart

EMBROIDERY



General Instructions for Applique

- The applique instructions included in the design pack are general instructions for the collection. For demonstration purposes, a sample design that best represents the entire collection is shown. Fabric and thread requirements will vary by design, but the general technique will be the same.

Step 1

- In the example, 8" x 11" gray cotton fabric and 8" x 11" OESD Fusible Woven were used. Refer to the printed templates following these instructions as a guide to cutting applique fabric large enough to cover the placement stitch.
- Press OESD Fusible Woven to the wrong side of the applique fabric.



Step 2

- Hoop the desired stabilizer and fabric for the project, in the example 1 layer of Ultra Clean and Tear and 1 layer Heavy Weight TearAway were used with white cotton fabric.



EMBROIDERY



Step 3

- Load the selected design into the machine.
- Design in the example is 90021-04.
- Thread the machine per the thread chart.
- Stitch Machine Step 1, Gray Fabric Placement Stitch.



Step 4

- Remove the hoop from the machine, but NOT the project from the hoop.
- Lay the hoop on a flat surface.
- Remove the paper backing.
- Place the prepared applique fabric right side up, over the placement stitch, covering entirely.
- Tape in place to secure with OESD Embroidery Tape TearAway.



Step 5

- Stitch Machine Step 2, Cut Line and Tackdown.



EMBROIDERY



Step 6

- Remove the hoop from the machine, but NOT the project from the hoop.
- Lay on a flat surface.
- Trim the excess fabric as close to the tackdown stitching as possible.
- Note: If the outermost row of stitching is accidentally cut, the inner stitches will still hold the applique in place.
- Tip: Cover the design area with StitchH2O or Heat2GO topping for better stitch quality on multiple layers of fabric.



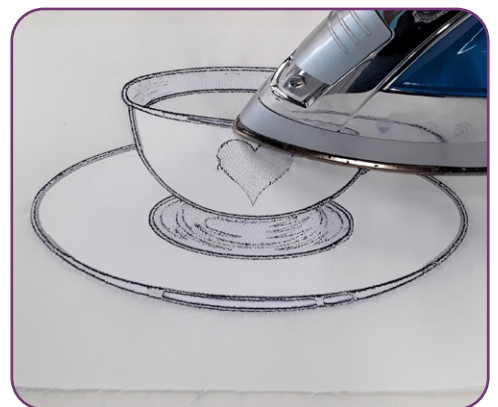
Step 7

- Return the hoop to the machine.
- Stitch Machine Step 3, Green Detail.
- Continue stitching through the design following the thread chart.



Step 8

- Remove the project from the hoop and any excess stabilizer from the project.
- Press face down on a Perfect Embroidery Press Cloth.

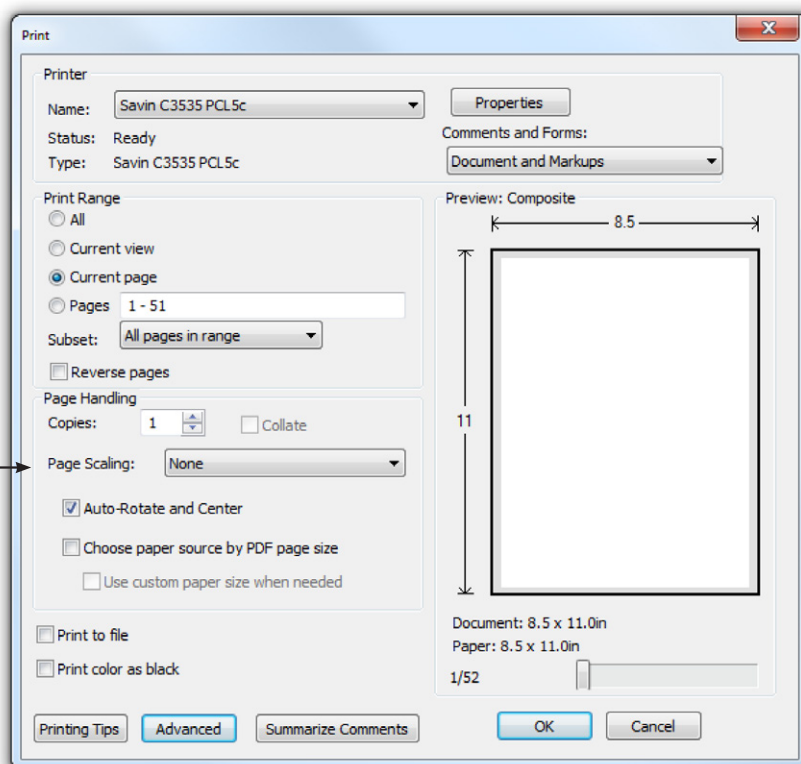


PRINTING INSTRUCTIONS



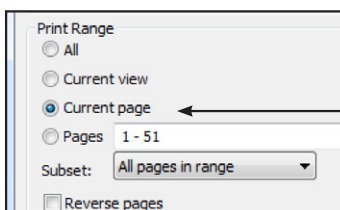
ATTENTION

When printing this document, any page scaling or page fitting options in your print dialog box must be turned OFF or set to NONE so that your files will print out at their actual size. Images not printed at actual size will not function as intended.



TO SAVE PAPER

Only print the desired image by navigating to the image's page, go to File > Print and select "Current page" in the print dialog box. Repeat for each desired image.



APPLIQUE PATTERNS



Print at 100%. No scaling. This box measures 1" x 1". Use the box as an accuracy guide when printing templates.

90021-04

MIRRORED PATTERNS



Print at 100%. No scaling. This box measures 1" x 1". Use the box as an accuracy guide when printing templates.

90021-04