



# Patriotic Stars Applique



Collection No. AQ10003  
2 Designs

## Isacord Thread Colors

---

- 0176 Fog
- 0670 Cream
- 0842 Toffee
- 0941 Golden Grain
- 1840 Corsage
- 1906 Tulip
- 1912 Winterberry
- 2152 Heather Pink
- 2521 Fuschia
- 5531 Pear
- 5643 Green Dust
- 6051 Jalapeno

 **Note: One spool of 1000 meter thread is adequate for the project unless otherwise noted.**

## AccuQuilt Compatible Dies

---

This collection is compatible with the following AccuQuilt GO! die:

- 55028 GO! Star-2", 3", 4" Die

# SUMMARY



AQ10003-01



Design Size:  
6.37 X 6.38 in.

AQ10003-02



Design Size:  
9.60 X 5.12 in.

## GENERAL APPLIQUE SUPPLIES CUT IN PLACE

### Stabilizers

---

- OESD SoftWeb
- OESD StabilStick TearAway

### Fabrics/Textiles

---

- Assorted fabric
- Cut the applique fabrics 1/4" - 1/2" larger than the applique patterns.

### Notion & Tools

---

- OESD Expert Embroidery Tape TearAway
- OESD Perfect Embroidery Press Cloth
- OESD Grippy Grid
- Embroidery Needle Sharp 75/11

### Thread Colors

---

- Per thread chart

## GENERAL CUT IN PLACE APPLIQUE INSTRUCTIONS

The applique instructions, included in the collection, are general instructions. For demonstration purposes, a sample design that best demonstrates the technique is shown.

Fabric and thread requirements will vary by design, but the general technique is the same.

Example design is Sweeter Than Pumpkin Pie Applique 51303-03, from the collection Adorable Autumn 51303.

 **Note: Some thread colors in instructions have been changed or digitally enhanced for better visibility.**

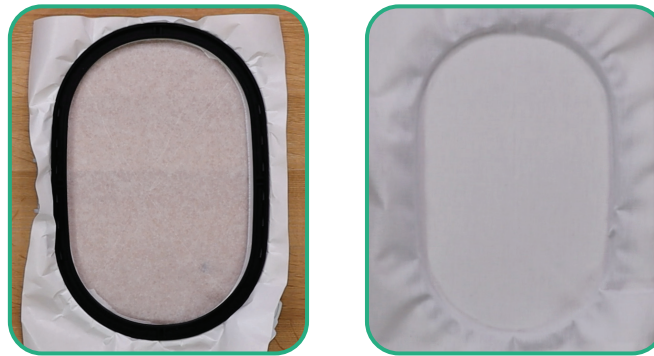
### Step 1

- Apply one layer of SoftWeb to the wrong side of the applique fabric.



## Step 2

- Using the OEESD Grippy Grid, hoop the desired stabilizer and fabric for the project.
- Stabilizer used in the example is StabilStick TearAway.



## Step 3

- Load selected design into the machine.
- Example design is Sweeter Than Pumpkin Pie Applique 51303-03, from the collection Adorable Autumn 51303.
- Thread the machine per the thread chart.
- Place the hoop on the machine.
- Stitch Machine Step 1, Tan Placement Stitch.



## Step 4

- Remove the hoop from the machine, but NOT the project from the hoop.
- Completely cover the placement stitch with the prepared fabric.
- Tape in place to secure.
- Return the hoop to the machine.



## Step 5

- Stitch Machine Step 2, Cut Line and Tackdown.



## Step 6

- Remove the hoop from the machine, but NOT the project from the hoop.
- Place on a flat surface.
- Trim the excess fabric as close to the cut line as possible.

**Note: If the outermost stitches (cut line) are cut, the inner stitches (tackdown) will hold the applique in place.**



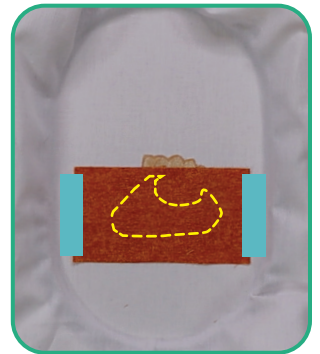
## Step 7

- Return the hoop to the machine.
- Stitch Machine Step 3, Orange Fabric Placement Stitch.



## Step 8

- Remove the hoop from the machine, but NOT the project from the hoop.
- Remove the paper backing off the SoftWeb on applique fabric.
- Completely cover the placement stitch with the prepared fabric.
- Tape in place to secure.
- Return the hoop to the machine.



## Step 9

- Stitch Machine Step 4, Cut Line and Tackdown.



# CUT IN PLACE

## □ Step 10

- Remove the hoop from the machine, but NOT the project from the hoop.
- Place on a flat surface.
- Trim the excess fabric as close to the cut line as possible.



## □ Step 11

- Repeat the applique process as many times as needed following the thread chart.



## □ Step 12

- Return the hoop to the machine and stitch the remaining steps per the thread chart.



## Step 13

- When the design is complete, remove excess stabilizer.
- Press right side down on a Perfect Embroidery Press Cloth.

**Note:** Using the Perfect Embroidery Press Cloth when pressing your design helps prevent the stitches from becoming crushed and absorbs steam for a perfectly pressed finish.



## GENERAL APPLIQUE SUPPLIES PRE-CUT

### Stabilizers

---

- OESD Applique Fuse and Fix
- OESD Medium Weight TearAway

### Fabrics/Textiles

---

- Assorted fabric
- Cut the applique fabrics 1/4" - 1/2" larger than the applique patterns.

### Notion & Tools

---

- OESD Perfect Embroidery Press Cloth
- OESD Grippy Grid
- OESD Perfect Scoring Tool

### Thread Colors

---

- Per thread chart

## GENERAL PRE-CUT APPLIQUE INSTRUCTIONS

The applique instructions, included in the collection, are general instructions. For demonstration purposes, a sample design that best demonstrates the technique is shown.

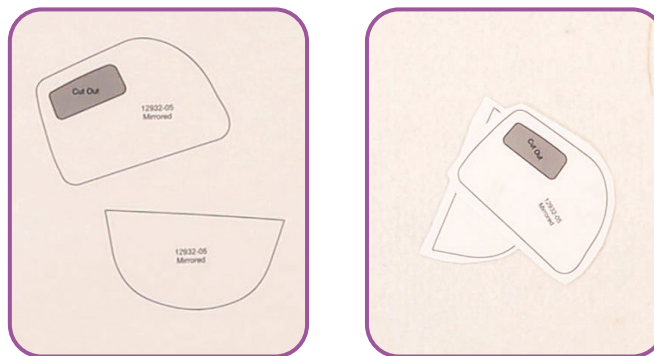
Fabric and thread requirements will vary by design, but the general technique is the same.

Example design is Cake Mixing 12932-05 from the collection Live Love Bake 13932.

 **Note: Some thread colors in instructions have been changed or digitally enhanced for better visibility.**

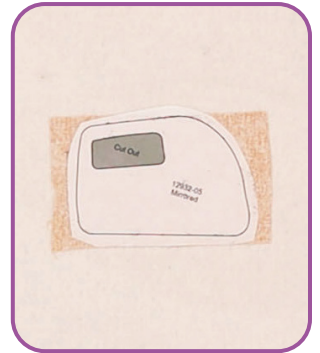
### Step 1

- Print the mirrored version of the required patterns (at 100% or 1:1 ratio) onto the paper side of Applique Fuse and Fix.
- Cut approximately 1/2" - 1/4" outside the printed applique pattern.



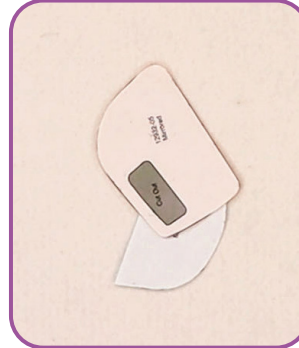
## Step 2

- Fuse the trimmed pattern to the back of the appropriate applique fabric with the paper side of the printed pattern up.
- For a secure fuse, hold the iron on the pattern for 10-15 seconds.



## Step 3

- Trim the prepared appliques on the outer edge of the black outline. Set aside.



## Step 4

- Using the OESD Grippy Grid, hoop the desired stabilizer and fabric for the project.
- In the example we used Medium Weight TearAway Black.



## □ Step 5

- Load the selected design into the machine.
- The example design is Cake Mixing 12932-05, from the collection Live Love Bake 12932.
- Thread the machine per the thread chart.
- Stitch Machine Step 1, Blue Whisks.



## □ Step 6

- Stitch Machine Step 2, Purple Detail.
- Stitch Machine Step 3, Blue Fabric Placement Stitch.



## Step 7

- Remove the hoop from the machine, but NOT the project from the hoop.
- Place the hoop on a flat surface.
- On the back of the prepared applique fabric, use the OESD Perfect Scoring Tool to score and remove the paper backing to reveal the adhesive surface.
- Position the applique, fabric side up, within the placement stitch, matching the cut edges with the stitching line.
- Finger press to secure.



**Note: Applique Fuse and Fix is repositionable.**

## Step 8

- Return the hoop to the machine.
- Stitch Machine Step 4, Blanket Stitch Tackdown.



## □ Step 9

- Stitch Machine Step 5, Orange Fabric Placement Stitch.



## □ Step 10

- Remove the hoop from the machine, but NOT the project from the hoop.
- Place the hoop on a flat surface.
- On the back of the prepared applique fabric, score and remove the paper backing to reveal the adhesive surface.
- Position the applique, fabric side up, within the placement stitch, matching the cut edges with the stitching line.
- Finger press to secure.



## □ Step 11

- Return the hoop to the machine.
- Stitch Machine Step 6, Blanket Stitch Tackdown.



## Step 12

- Stitch the remaining steps per the thread chart.



## Step 13

- Remove the project from the hoop and any excess stabilizer from the project.
- Press face down on a Perfect Embroidery Press Cloth.

**Note: Using the Perfect Embroidery Press Cloth when pressing your design helps prevent the stitches from becoming crushed and absorbs steam for a perfectly pressed finish.**



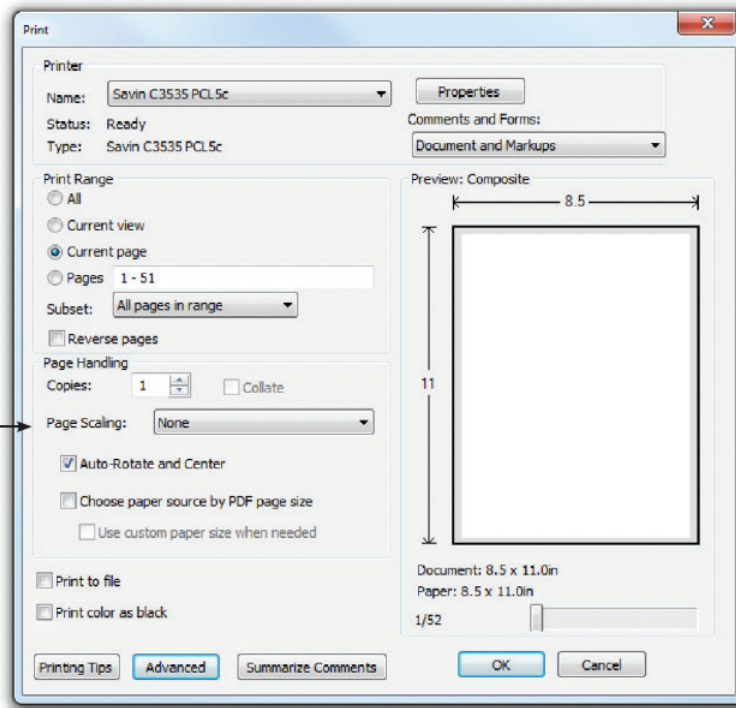
## Step 14

- The project is complete. Enjoy!



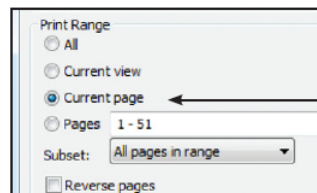
## ATTENTION

When printing this document, any page scaling or page fitting options in your print dialog box must be turned OFF or set to NONE so that your files will print out at their actual size. Images not printed at actual size will not function as intended.



## TO SAVE PAPER

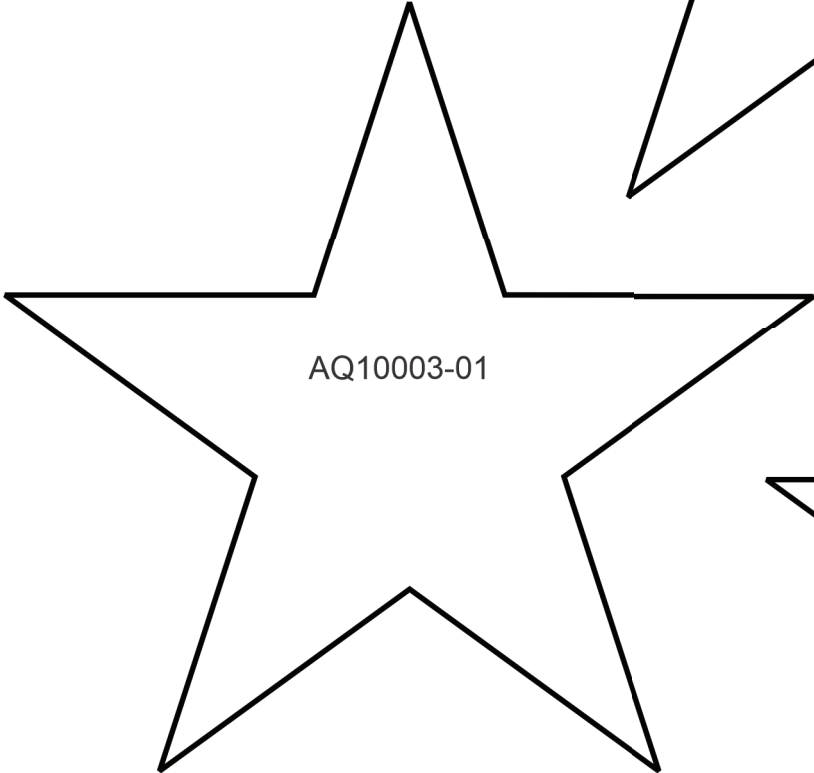
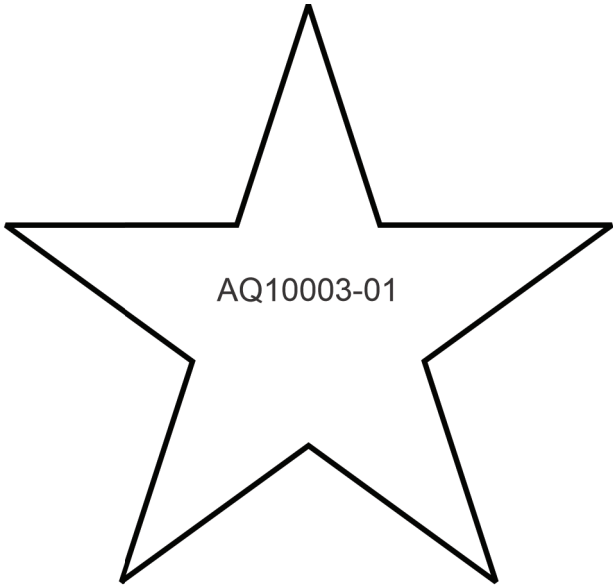
Only print the desired image by navigating to the image's page, go to File > Print and select "Current page" in the print dialog box. Repeat for each desired image.



# APPLIQUE PATTERNS

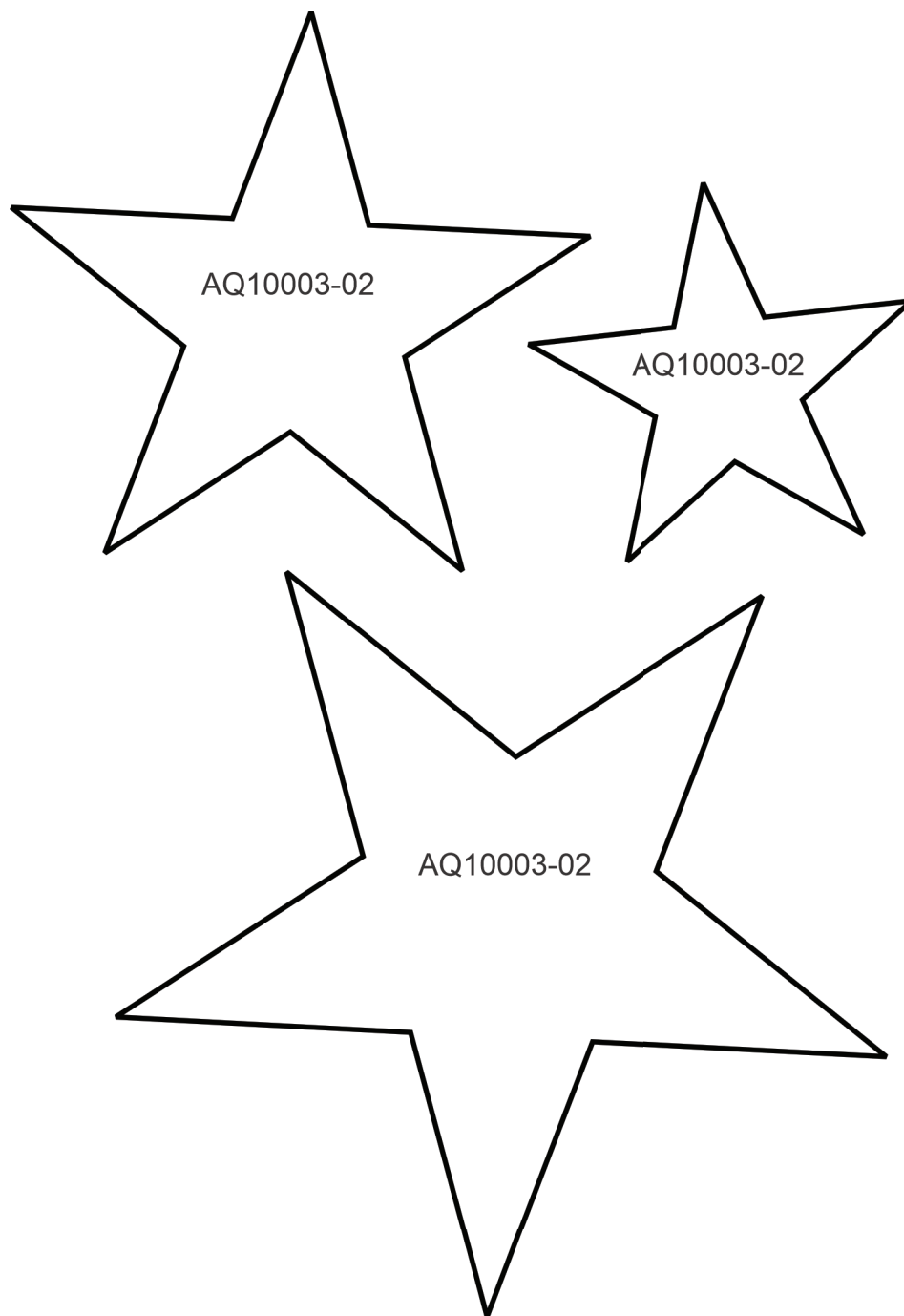


Print at 100%. No scaling. This box measures 1" x 1". Use the box as an accuracy guide when printing templates.



# APPLIQUE PATTERNS

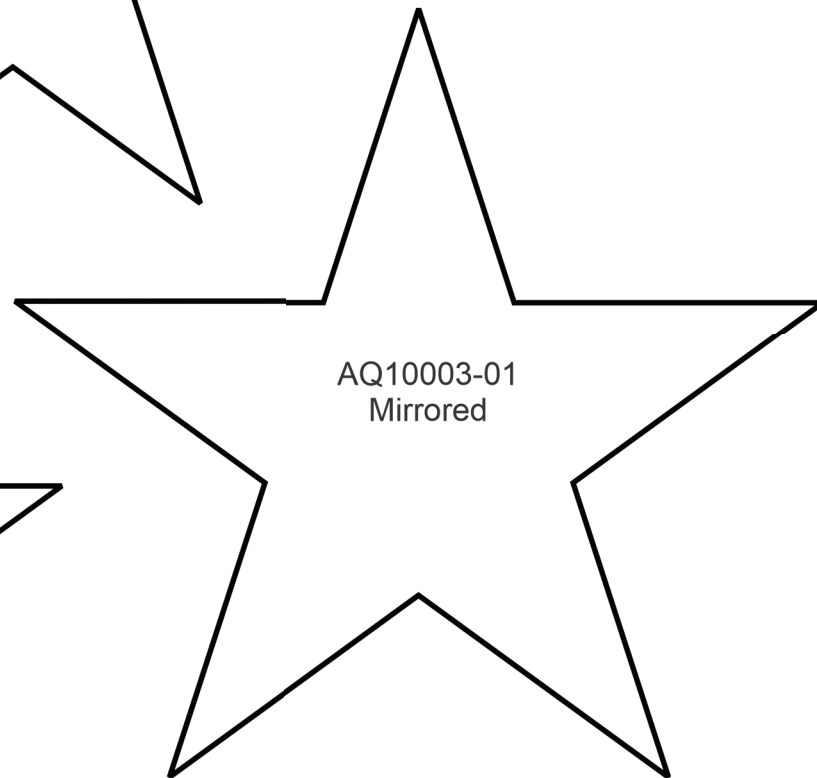
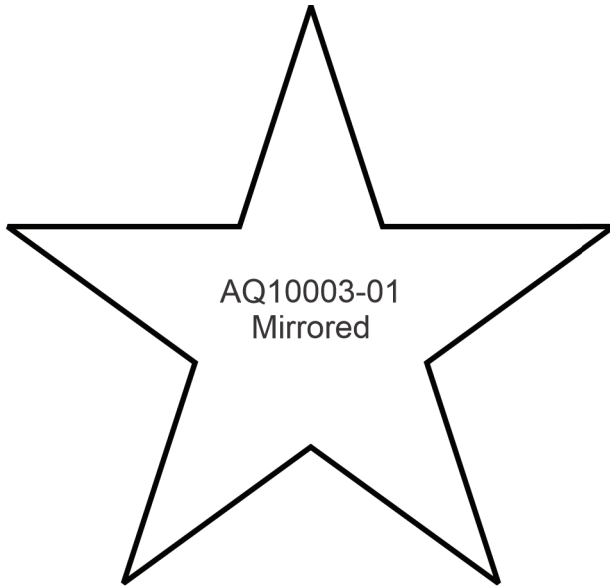
Print at 100%. No scaling. This box measures 1" x 1". Use the box as an accuracy guide when printing templates.



# MIRRORED PATTERNS



Print at 100%. No scaling. This box measures 1" x 1". Use the box as an accuracy guide when printing templates.



# MIRRORED PATTERNS

Print at 100%. No scaling. This box measures 1" x 1". Use the box as an accuracy guide when printing templates.

