

Hope You Like Dogs

by Amanda Houston



Collection No. D81002
1 Design

MATERIALS



Isacord Thread Colors

- 0020 Black
- 0170 Sea Shell
- 0941 Golden Grain

Note: One spool of 1000 meter thread is adequate for the project unless otherwise noted.



SUMMARY



D81002



Design Size:
9.53 X 6.36 in.



GENERAL APPLIQUE SUPPLIES CUT IN PLACE

Stabilizers

- OESD SoftWeb
- OESD StabilStick TearAway

Fabrics/Textiles

- Assorted fabric
- Cut the prepared applique fabrics 1/4" - 1/2" larger than the applique templates.

Notion & Tools

- OESD Expert Embroidery Tape TearAway
- OESD Perfect Embroidery Press Cloth
- OESD Grippy Grid
- Embroidery Needle Sharp 75/11

Isacord Thread Colors

- Per thread chart

GENERAL CUT IN PLACE APPLIQUE INSTRUCTIONS

The applique instructions, included in the collection, are general instructions. For demonstration purposes, a sample design that best demonstrates the technique is shown.

Fabric and thread requirements will vary by design, but the general technique is the same.

Example design is Sweeter Than Pumpkin Pie Applique 51303-3, from the collection Adorable Autumn 51303.

Note: Some thread colors in instructions have been changed or digitally enhanced for better visibility.

Step 1

- Apply one layer of SoftWeb to the wrong side of the applique fabric.



Step 2

- Hoop the desired stabilizer and fabric for the project.
- Stabilizer used in the example is StabilStick TearAway.



CUT IN PLACE

GENERAL CUT IN PLACE APPLIQUE INSTRUCTIONS

Step 3

- Load selected design into the machine.
- Example design is Sweeter Than Pumpkin Pie Applique 51303-3, from the collection Adorable Autumn 51303.
- Thread the machine per the thread chart.
- Place the hoop on the machine.
- Stitch Machine Step 1, Tan Placement Stitch.



Step 4

- Remove the hoop from the machine, but NOT the project from the hoop.
- Completely cover the placement stitch with the prepared fabric.
- Tape in place to secure.
- Return the hoop to the machine.



Step 5

- Stitch Machine Step 2, Cut Line and Tackdown.



CUT IN PLACE

GENERAL CUT IN PLACE APPLIQUE INSTRUCTIONS

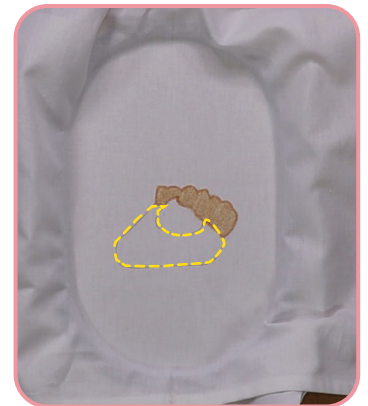
Step 6

- Remove the hoop from the machine, but NOT the project from the hoop.
- Place on a flat surface.
- Trim the excess fabric as close to the cut line as possible.
Note: If the outermost stitches (cut line) are cut, the inner stitches (tackdown) will hold the applique in place.



Step 7

- Place the hoop on the machine.
- Stitch Machine Step 3, Orange Fabric Placement Stitch.



Step 8

- Remove the hoop from the machine, but NOT the project from the hoop.
- Completely cover the placement stitch with the prepared fabric.
- Tape in place to secure.
- Return the hoop to the machine.



CUT IN PLACE

GENERAL CUT IN PLACE APPLIQUE INSTRUCTIONS

Step 9

- Stitch Machine Step 4, Cut Line and Tackdown.



Step 10

- Remove the hoop from the machine, but NOT the project from the hoop.
- Place on a flat surface.
- Trim the excess fabric as close to the cut line as possible.



Step 11

- Repeat the applique process as many times as needed following the thread chart.



CUT IN PLACE



GENERAL CUT IN PLACE APPLIQUE INSTRUCTIONS

Step 12

- Return the hoop to the machine and stitch the remaining steps per the thread chart.



Step 13

- When the design is complete, remove excess stabilizer.
- Press right side down on a Perfect Embroidery Press Cloth.



GENERAL APPLIQUE SUPPLIES PRE-CUT APPLIQUE INSTRUCTIONS

Stabilizers

- OESD Applique Fuse and Fix
- OESD Medium Weight TearAway

Fabrics/Textiles

- Assorted fabric

 **Note: Refer to the applique templates for sizes.**

Notion & Tools

- OESD Perfect Embroidery Press Cloth
- OESD Grippy Grid

Isacord Thread Colors

- Per thread chart

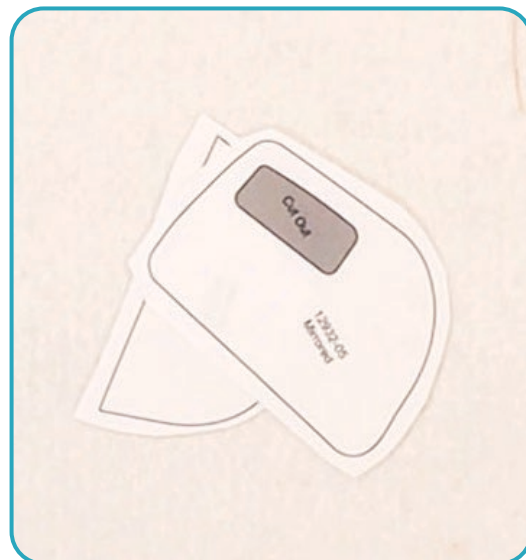
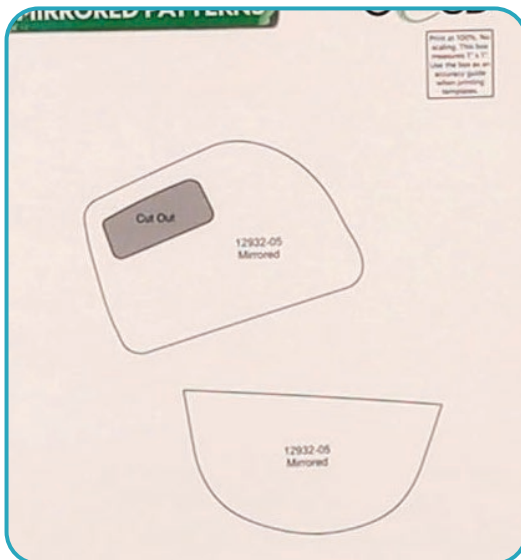
GENERAL PRE-CUT APPLIQUE INSTRUCTIONS

The applique instructions included in the design pack are general instructions for the collection. For demonstration purposes, a sample design that best represents the entire collection is shown. Fabric and thread requirements will vary by design, but the general technique will be the same.

Sample design is Cake Mixing 12932-05, from the collection Live Love Bake 12932.

Step 1

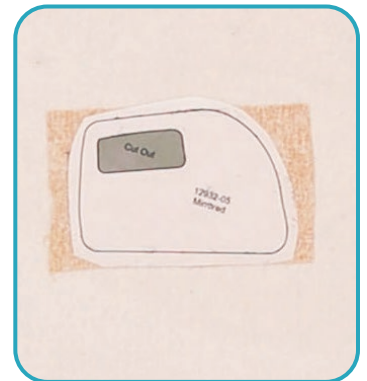
- Print the mirrored version of the required templates (at 100% or 1:1 ratio) onto the paper side of Applique Fuse and Fix.
- Cut approximately 1/2" - 1/4" outside the printed applique templates.



GENERAL PRE-CUT APPLIQUE INSTRUCTIONS

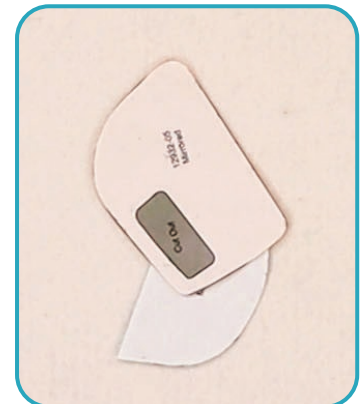
Step 2

- Fuse the trimmed templates to the back of the appropriate applique fabric with the paper side of the printed template up.
- For a secure fuse, hold the iron on the template for 10-15 seconds.



Step 3

- Trim the prepared appliques on the outer edge of the black outline. Set aside.



Step 4

- Hoop the desired stabilizer and fabric for the project.
- In the example we used Medium Weight TearAway Black.



GENERAL PRE-CUT APPLIQUE INSTRUCTIONS

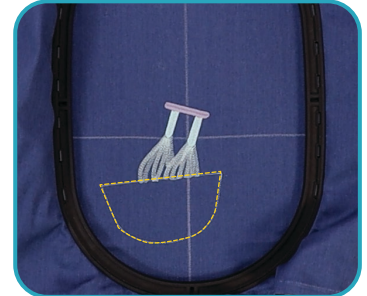
Step 5

- Load the selected design into the machine.
- The example design is Cake Mixing 12932-05, from the collection Live Love Bake 12932.
- Thread the machine per the thread chart.
- Stitch Machine Step 1, Blue Whisks.



Step 6

- Stitch Machine Step 2, Purple Detail.



Step 7

- Stitch Machine Step 3, Blue Fabric Placement Stitch.
- Remove the hoop from the machine, but NOT the project from the hoop.
- Place the hoop on a flat surface.
- On the back of the prepared applique fabric, score and remove the paper backing to reveal the adhesive surface.
- Position the applique, fabric side up, within the placement stitch, matching the cut edges with the stitching line.

Finger press to secure.



GENERAL PRE-CUT APPLIQUE INSTRUCTIONS

Step 8

Note: Applique Fuse and Fix is repositionable.

- Return the hoop to the machine.
- Stitch Machine Step 4, Blanket Stitch Tackdown.



Step 9

- Stitch Machine Step 5, Orange Fabric Placement Stitch.
- Remove the hoop from the machine, but NOT the project from the hoop.
- Place the hoop on a flat surface.



Step 10

- On the back of the prepared applique fabric, score and remove the paper backing to reveal the adhesive surface.
- Position the applique, fabric side up, within the placement stitch, matching the cut edges with the stitching line.
- Finger press to secure.



GENERAL PRE-CUT APPLIQUE INSTRUCTIONS

Step 11

- Return the hoop to the machine.
- Stitch Machine Step 6, Blanket Stitch Tackdown.



Step 12

- Stitch the remaining steps per the thread chart.



Step 13

- Remove the project from the hoop and any excess stabilizer from the project.
- Press face down on a Perfect Embroidery Press Cloth.



GENERAL PRE-CUT APPLIQUE INSTRUCTIONS

Step 14

- The project is complete. Enjoy!

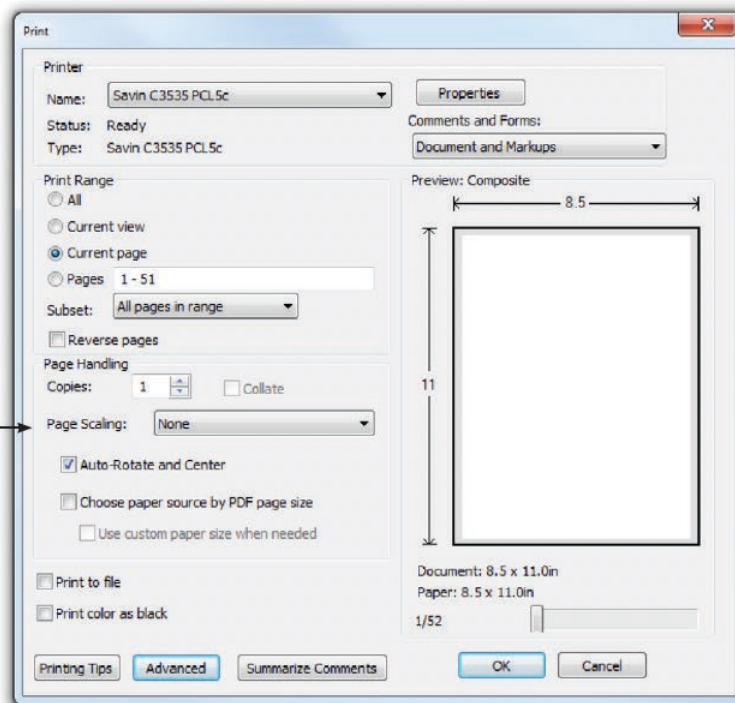


PRINTING INSTRUCTIONS



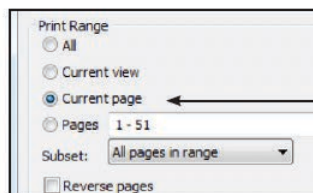
ATTENTION

When printing this document, any page scaling or page fitting options in your print dialog box must be turned OFF or set to NONE so that your files will print out at their actual size. Images not printed at actual size will not function as intended.



TO SAVE PAPER

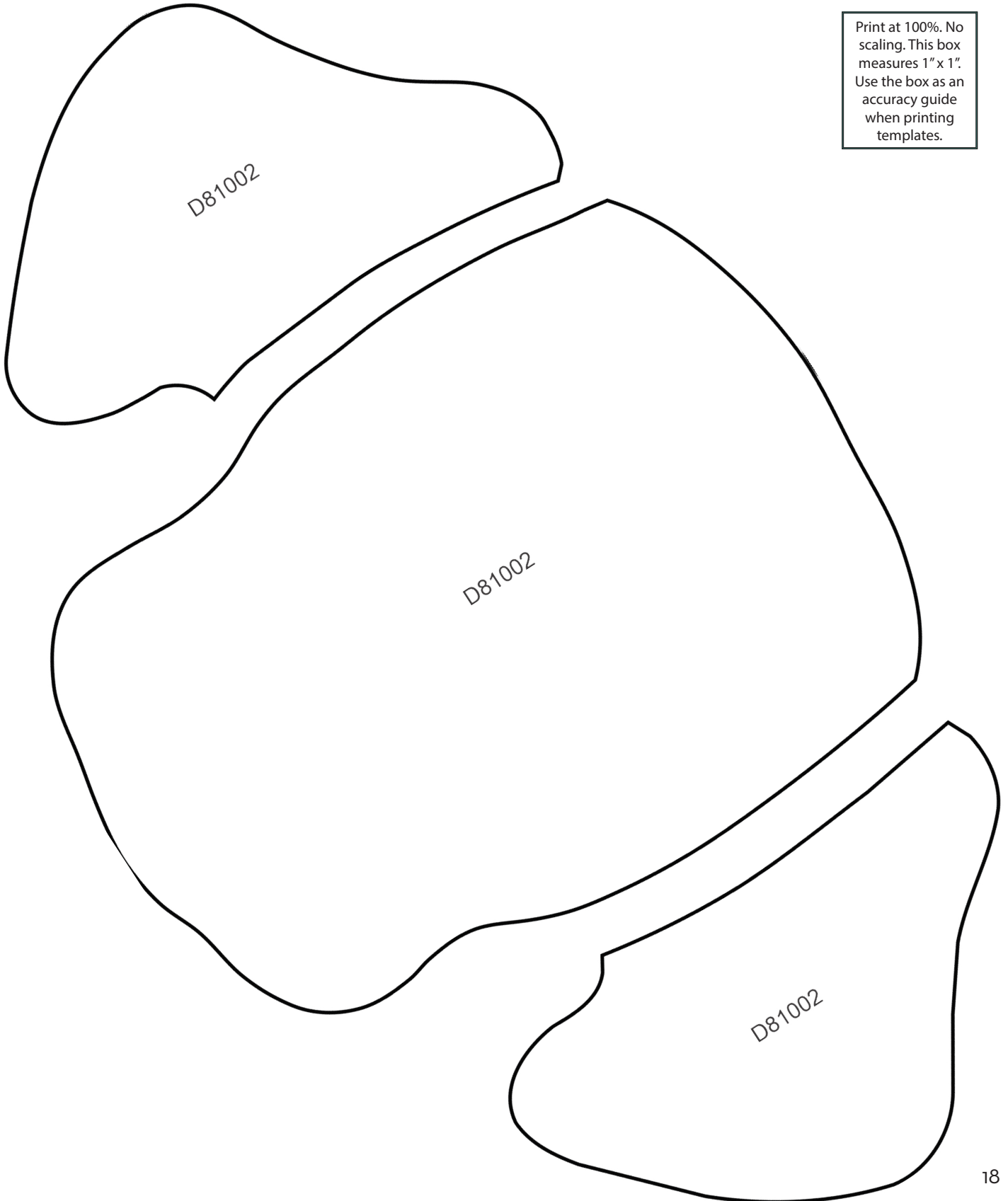
Only print the desired image by navigating to the image's page, go to File > Print and select "Current page" in the print dialog box. Repeat for each desired image.



APPLIQUE PATTERNS



Print at 100%. No scaling. This box measures 1" x 1". Use the box as an accuracy guide when printing templates.



MIRRORED PATTERNS



Print at 100%. No scaling. This box measures 1" x 1". Use the box as an accuracy guide when printing templates.

