

# Springtime Sign



Collection No. PK10141  
1 Design/3 Files

# MATERIALS



## Isacord Thread Colors

- 0015 White
- 0622 Star Gold
- 0630 Buttercup
- 5822 Kiwi

**Note: One spool of 1000 meter thread is adequate for the project unless otherwise noted.**



# MATERIALS



## Stabilizers

- OESD AquaMesh WashAway
- OESD BadgeMaster WashAway
- OESD SoftWeb
- OESD Fiber Form
- OESD Applique Fuse and Fix
- OESD Top Cover Permanent Topping  
**(Optional)**

## Fabrics/Textiles

- White Quilter's Cotton
- 1/4 yard
- Light Green Quilter's Cotton
- 1/4 yard
- Green Quilter's Cotton
- 1/4 yard
- Light Yellow Quilter's Cotton
- 1/4 yard

 **Note: Fabric amounts are estimates and may result in overages.**

## Notions & Tools

- OESD Grippy Grid
- OESD Expert Embroidery Tape TearAway
- OESD Expert Embroidery Tape WashAway
- OESD Perfect Embroidery Press Cloth
- OESD Perfect Scoring Tool
- OESD Perfect Punch
- OESD MiniMat
- OESD Alligator Clamps
- Embroidery Needle Sharp 75/11
- 24" of 3/8" ribbon
- (4) 15mm jump rings
- Pliers

## Isacord Thread Colors

- Per thread chart



# SUMMARY



**Completed Design Size:** 17" H x 15" W

PK10141-01



Design Size:  
11.05 X 5.97 in.  
Requires 1

PK10141-02



Design Size:  
14.88 X 5.46 in.  
Requires 1

PK10141-03



Design Size:  
11.04 X 5.53 in.  
Requires 1



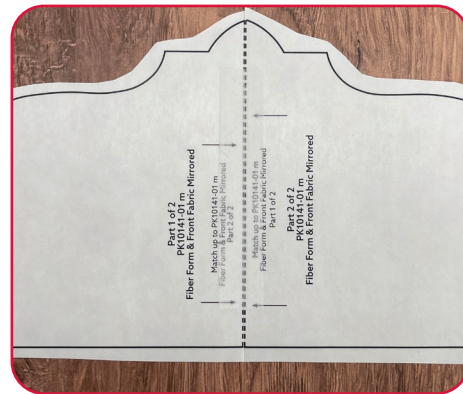
## General Instructions

The freestanding applique (FSA) instructions, included in the collection, are general instructions. For demonstration purposes, a sample design that best demonstrates the technique is shown. Design PK10141-01 is shown here. Fabric and thread requirements will vary by design, but the general technique is the same. Applique techniques shown are pre-cut (Fiber Form and appliques) and cut in place (background fabric). Pre-cut applique patterns are included at the end of the instructions.

**Note:** Some thread colors in the instructions have been changed or digitally enhanced for better visibility.

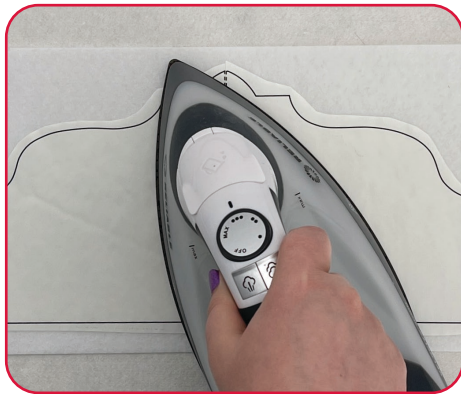
### Step 1

- Print the mirrored version of the applique patterns (at 100% scale or 1:1 ratio) onto the paper side of Applique Fuse and Fix. The applique patterns are included at the end of the instructions.
- Cut approximately 1/4" - 1/2" outside the printed applique patterns.
- Trim the partial templates on the edge of the black line where they join.
- Use OESD Expert Embroidery Tape TearAway to join the partial templates. The dashed lines will be next to each other, not on top.



## □ Step 2

- Cut the Fiber Form 1/4" - 1/2" larger than the applique patterns labeled Fiber Form & Front Fabric.
- Fuse the trimmed patterns to the back of the Fiber Form with the paper side of the printed patterns up. Hold the iron on the pattern for 10-15 seconds for a secure fuse.



## Step 3

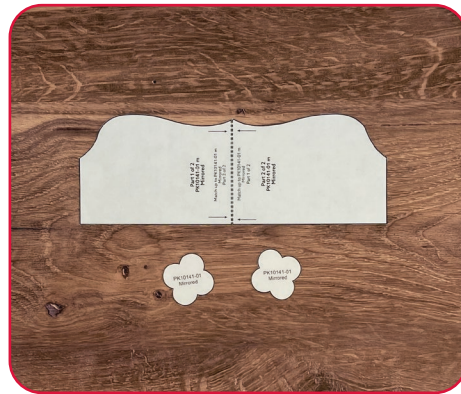
- Cut the inner applique fabrics 1/4" - 1/2" larger than the inner applique patterns.
- Fuse the trimmed patterns to the back of the inner applique fabrics with the paper side of the printed patterns up. Hold the iron on the pattern for 10-15 seconds for a secure fuse.

**Note: The Back Fabric Mirrored Pattern is not used as the technique shown for it is cut in place.**



## Step 4

- Trim the Fiber Form and inner applique fabrics on the outer edges of the black outline.
- Set aside.



## Step 5

- Cut the background applique fabrics 1/4" - 1/2" larger than the Fiber Form & Front Fabric and Back Fabric applique patterns.
- Adhere one layer of SoftWeb to the wrong side of the applique fabrics to provide body to the fabric.



## Step 6

- Using the OESD Grippy Grid, hoop one layer of Aquamesh and one layer of BadgeMaster for all designs.



## Step 7

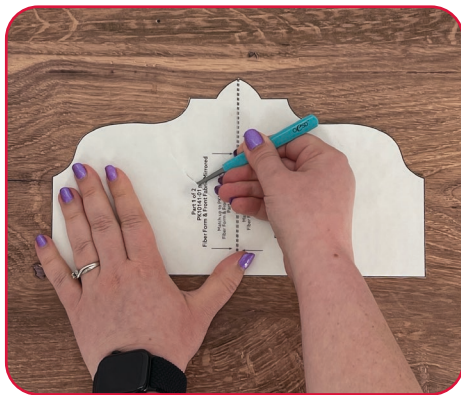
- Load the selected design into the machine.
- Example design is PK10141-01.
- Thread the machine per the thread chart.
- Place the hoop on the machine.
- Stitch Machine Step 1, Fiber Form/White Fabric Placement Stitch.



## □ Step 8

- Remove the hoop from the machine, but NOT the project from the hoop.
- Place the hoop on a flat surface.
- On the back of the Fiber Form, use the OESD Perfect Scoring Tool to score and remove the paper backing to reveal the adhesive surface.
- Place the Fiber Form within the placement stitching.
- Finger press to secure.

 **Tip: Applique Fuse and Fix is repositionable.**



## Step 9

- Remove the paper backing off the SoftWeb on the white applique fabric
- Completely cover the Fiber Form with the prepared white applique fabric.
- Tape in place with OESD Expert Embroidery Tape TearAway to secure.




## Step 10

- Return the hoop to the machine.
- Stitch Machine Step 2, Cut Line and Tackdown.



## □ Step 11

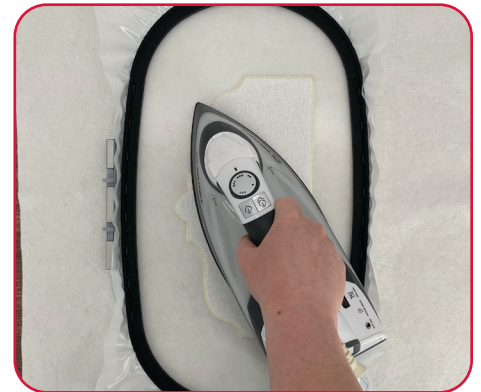
- Remove the hoop from the machine, but NOT the project from the hoop.
- Trim the excess fabric as close to the cut line as possible. If the outermost stitches (cut line) are cut, the inner stitches (tackdown) will hold the applique in place.

 **Tip: If the stabilizer is cut or a hole is created while trimming the fabric, use OESD Expert Embroidery Tape WashAway as a patch.**



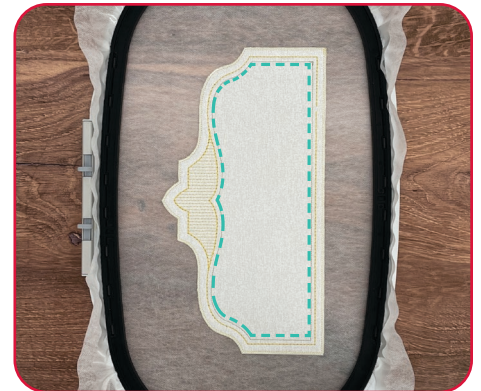
## □ Step 12

- Press the white applique fabric in the hoop to fuse the SoftWeb on the back of the applique to the Fiber Form.
- Cool completely before continuing the embroidery design.



## □ Step 13

- Return the hoop to the machine.
- Stitch Machine Step 3, Border Linework
- Stitch Machine Step 4, Light Green Fabric Placement Stitch.



## □ Step 14

- Remove the hoop from the machine, but NOT the project from the hoop.
- Place the hoop on a flat surface.
- On the back of the light green applique fabric, score and remove the paper backing to reveal the adhesive surface.
- Place the light green applique within the placement stitching.
- Finger press to secure.



## □ Step 15

- Return the hoop to the machine.
- Stitch Machine Step 5, Tackdown.

✓ **Note: There is no cut line because this applique doesn't have a satin stitch to cover it.**



## □ Step 16

- Stitch Machine Step 6, Yellow Fabric Placement Stitch.



## □ Step 17

- Remove the hoop from the machine, but NOT the project from the hoop.
- Place the hoop on a flat surface.
- On the back of the yellow applique fabric, score and remove the paper backing to reveal the adhesive surface.
- Place the yellow applique within the placement stitching.
- Finger press to secure.



## □ Step 18

- Return the hoop to the machine.
- Stitch Machine Step 7, Tackdown.

✍ **Note:** There is no cut line because this applique doesn't have a satin stitch to cover it.



## □ Step 19

- Stitch Machine Steps 8 – 12.



## □ Step 20

- Remove the hoop from the machine, but NOT the project from the hoop.
- Place the hoop on a flat surface.
- Turn the hoop over.
- Remove the paper backing off the SoftWeb on the white backing applique fabric.
- Place the prepared white applique fabric, right side up, completely covering the placement stitch.
- Carefully tape to secure.



**Tip:** Avoid pushing too hard on the stabilizer to prevent it from dislodging from the hoop.

## □ Step 21

- Stitch Machine Step 13, Back Fabric Cut Line and Tackdown.



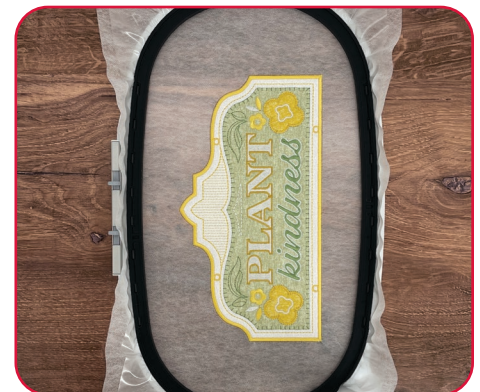
## □ Step 22

- Remove the hoop from the machine, but NOT the project from the hoop.
- Place the hoop on a flat surface.
- Turn the hoop over. Trim the excess fabric as close to the cut line as possible.



## □ Step 23

- Return the hoop to the machine.
- Stitch Machine Step 14, Cover Stitch and Punch Guides **with matching bobbin thread.**



## □ Step 24

- When the design is complete, remove the project from the hoop.
- Trim the stabilizer 1/4" - 1/2" outside the design.



# ASSEMBLY



## □ Step 25

- Rinse each piece in warm running water until the design is only slightly tacky.
- Place right side down on a non-stick surface to dry. Parchment paper or a cooling rack work well. Dry completely.
- Once dry, press right side down on an OESD Perfect Embroidery Press Cloth.



✔ **Note: Using the Perfect Embroidery Press Cloth when pressing your design helps prevent the stitches from becoming crushed and absorbs steam for a perfectly pressed finish.**

## □ Step 26

- Before assembly, use the OESD MiniMAT and the OESD Perfect Punch with the 3mm attachment to create the eyelets indicated in the diagram.
- Reference the Punch Tool Guides on page 21.

🔔 **Tip: Take care to not cut the satin stitching.**



# ASSEMBLY

## □ Step 27

- Align the eyelets of each design.
- Use pliers to open jump rings.
- Thread the jump ring through the corresponding eyelets to attach the sign pieces together.
- Close the jump ring with the pliers.
- Repeat for the remaining eyelets.



# ASSEMBLY



## Step 28

- Cut a 24" length of ribbon.
- Use the OEESD Alligator Clamps to pull the ribbon through the top eyelet holes.
- Tie to create a ribbon hanger.



## Step 29

- The sign is complete. Enjoy!



# PUNCH TOOL GUIDES



PK10141-01





PK10141-02




PK10141-03



 = 2 MM

 = 3 MM

 = 4 MM

CRAFT KNIFE

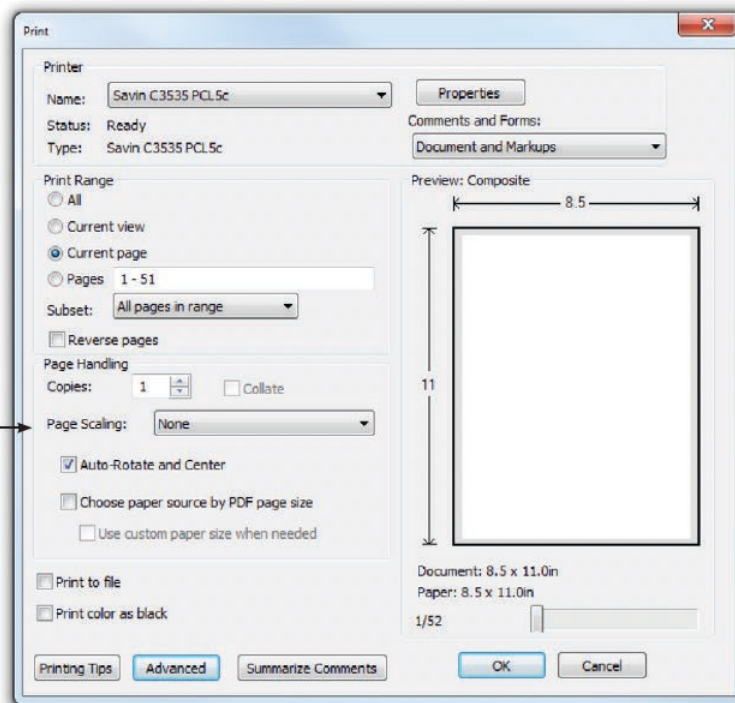


# PRINTING INSTRUCTIONS



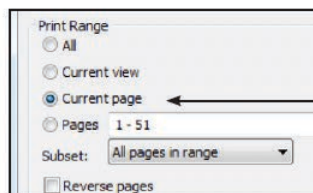
## ATTENTION

When printing this document, any page scaling or page fitting options in your print dialog box must be turned OFF or set to NONE so that your files will print out at their actual size. Images not printed at actual size will not function as intended.



## TO SAVE PAPER

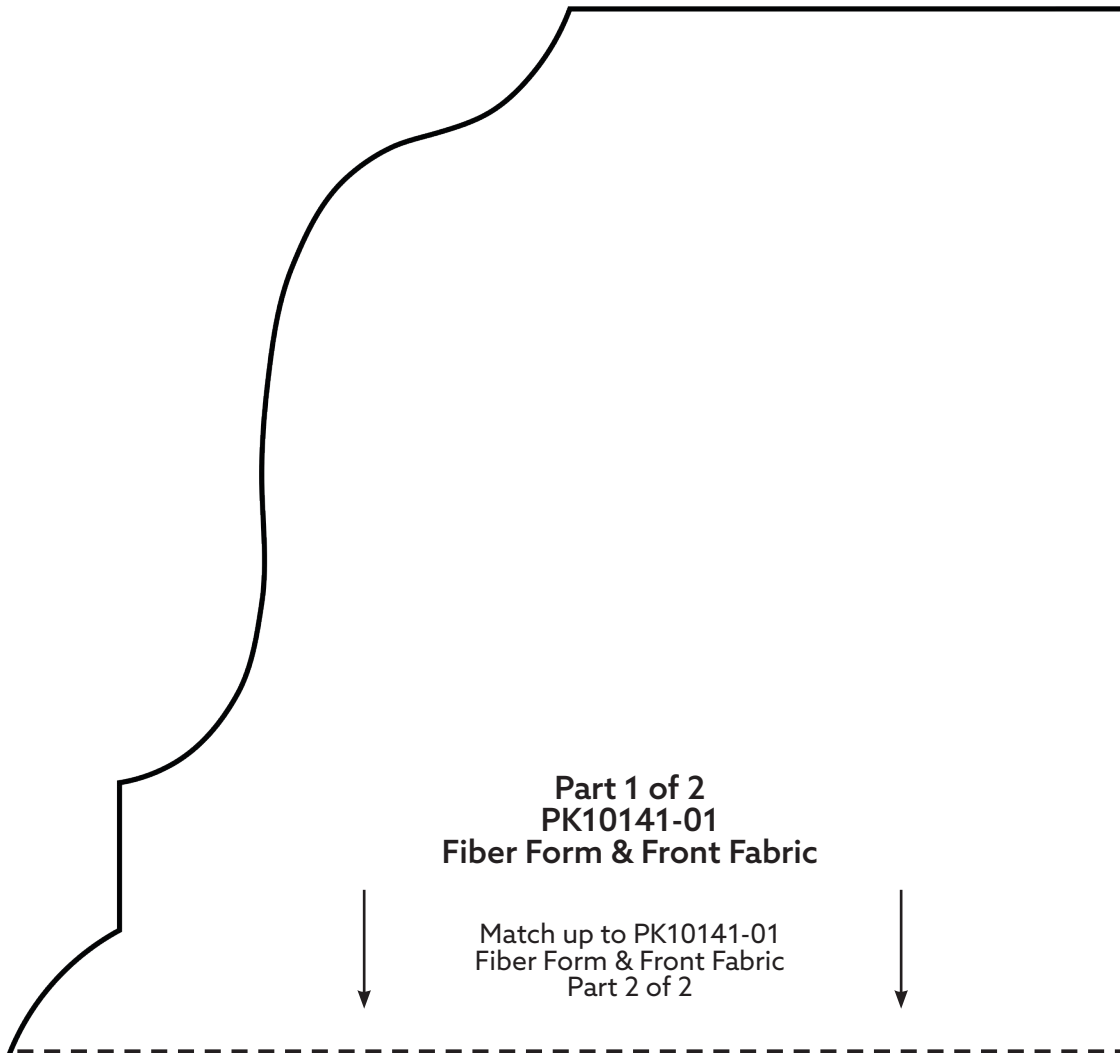
Only print the desired image by navigating to the image's page, go to File > Print and select "Current page" in the print dialog box. Repeat for each desired image.



# APPLIQUE PATTERNS



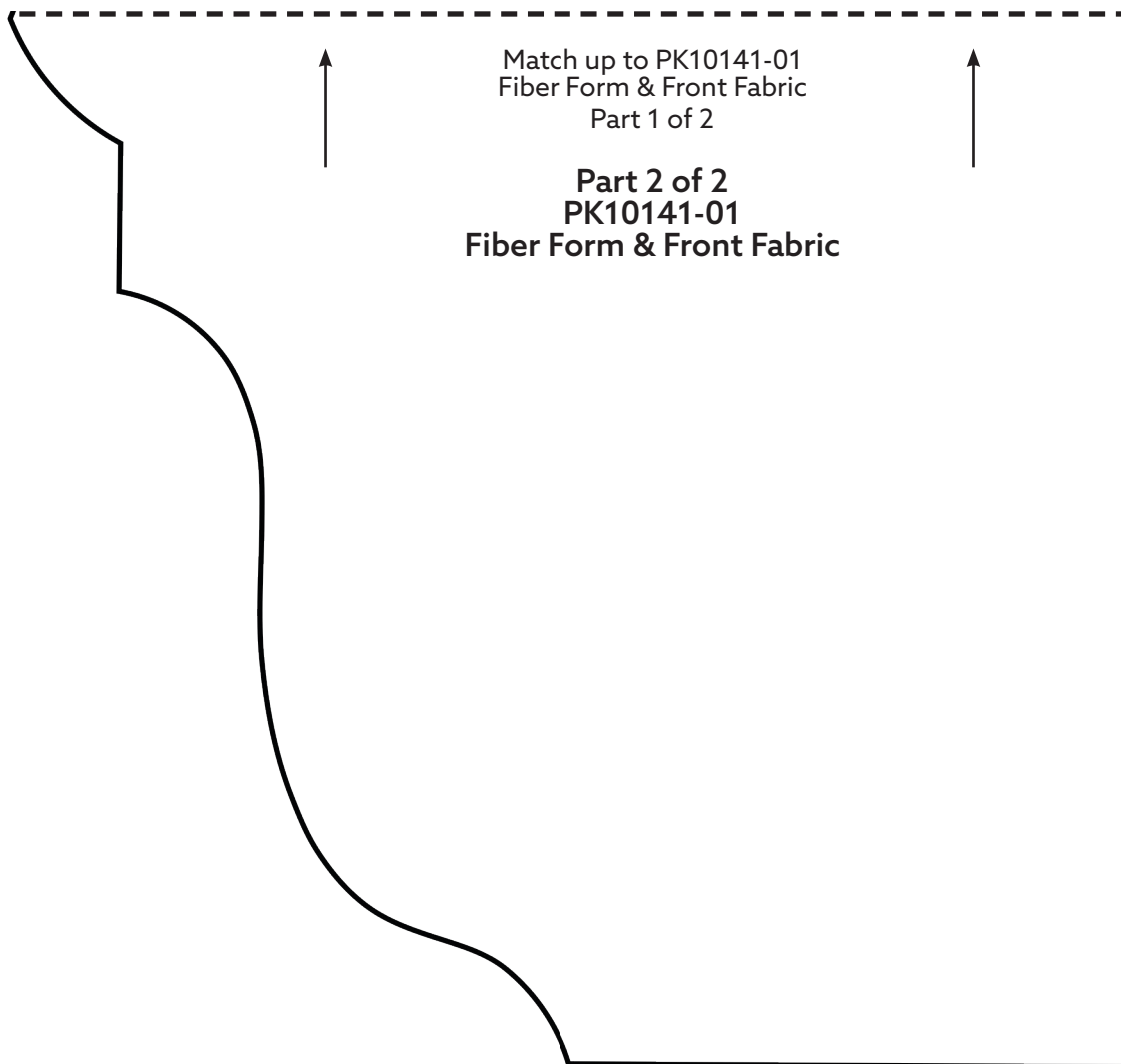
Print at 100%. No scaling. This box measures 1" x 1". Use the box as an accuracy guide when printing templates.



# APPLIQUE PATTERNS



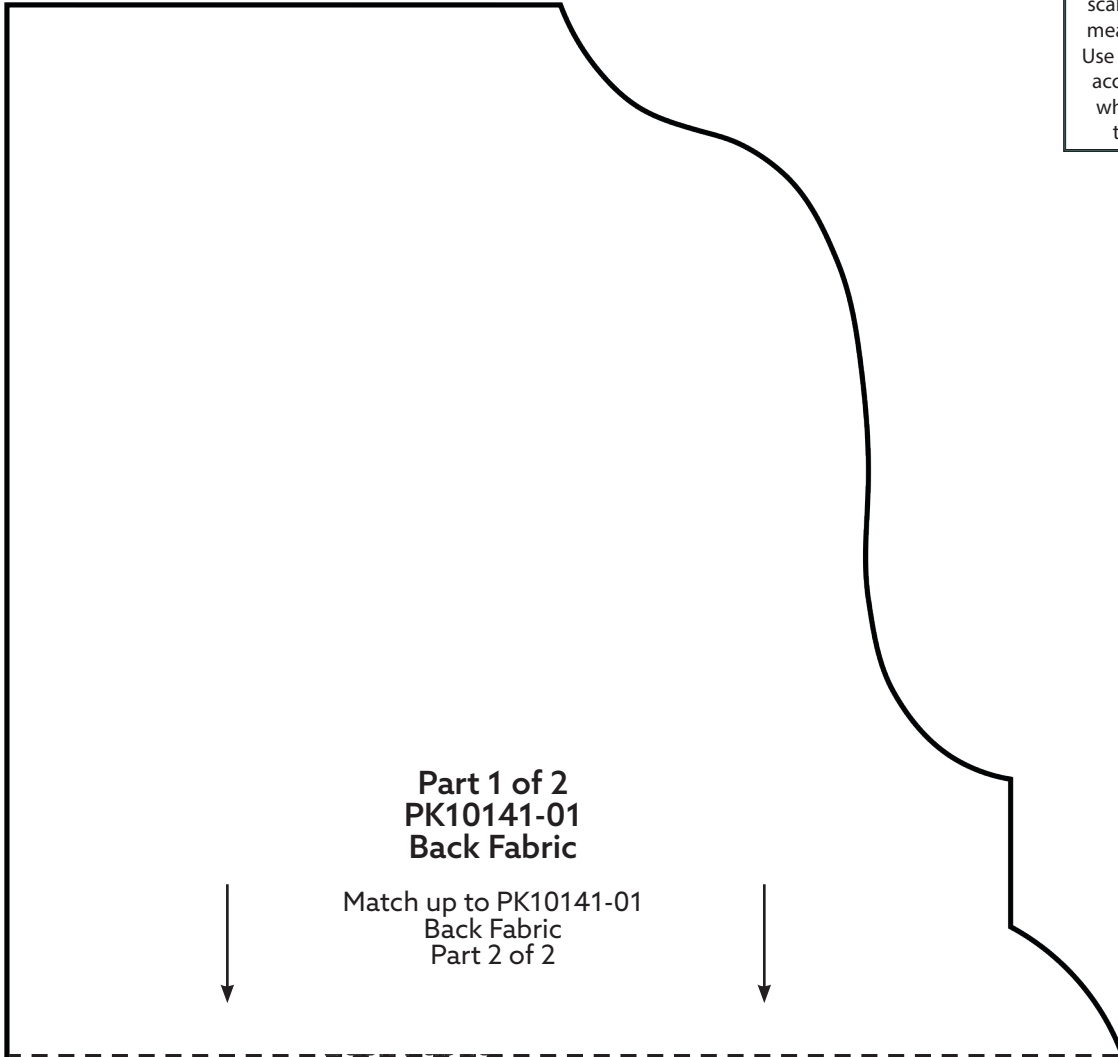
Print at 100%. No scaling. This box measures 1" x 1". Use the box as an accuracy guide when printing templates.



# APPLIQUE PATTERNS



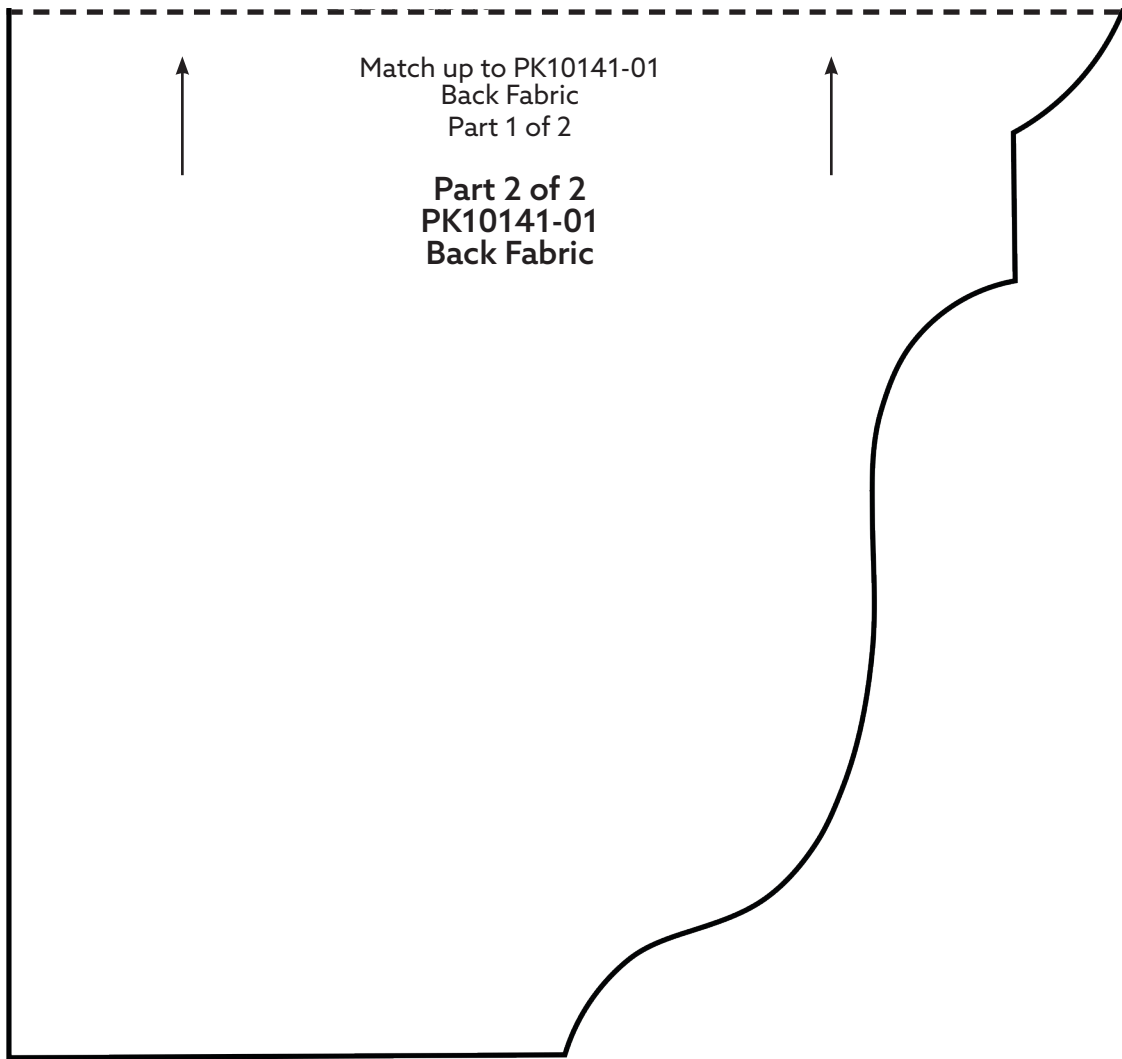
Print at 100%. No scaling. This box measures 1" x 1". Use the box as an accuracy guide when printing templates.



# APPLIQUE PATTERNS



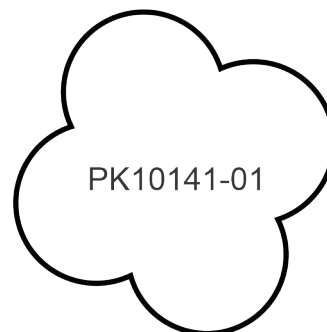
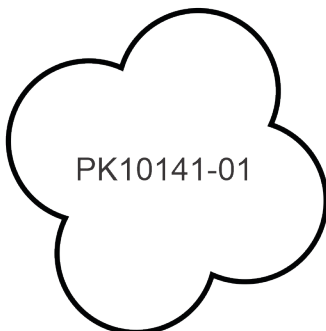
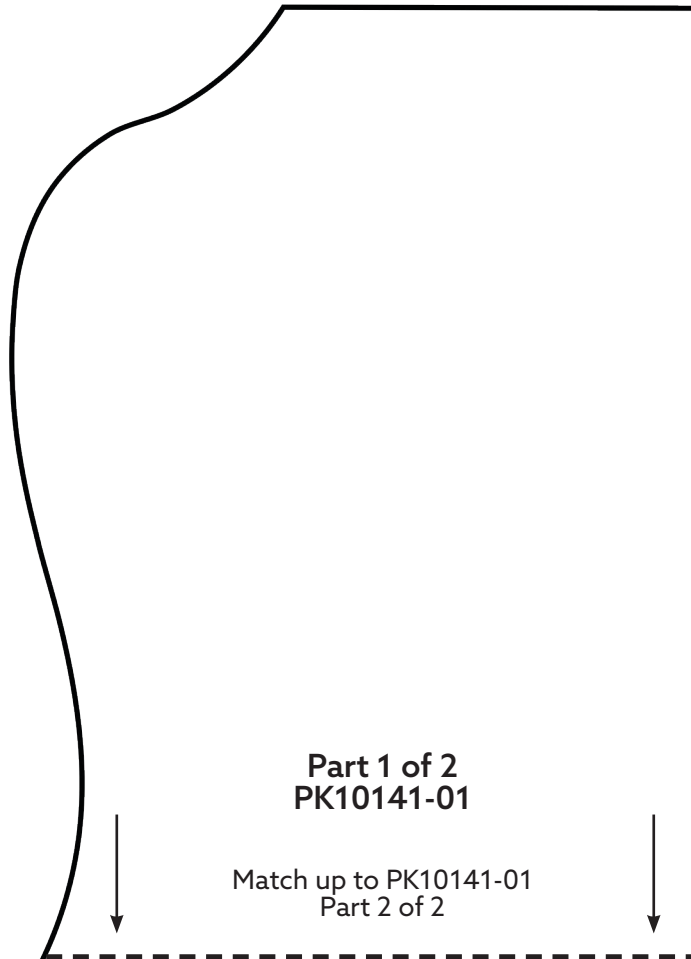
Print at 100%. No scaling. This box measures 1" x 1". Use the box as an accuracy guide when printing templates.



# APPLIQUE PATTERNS



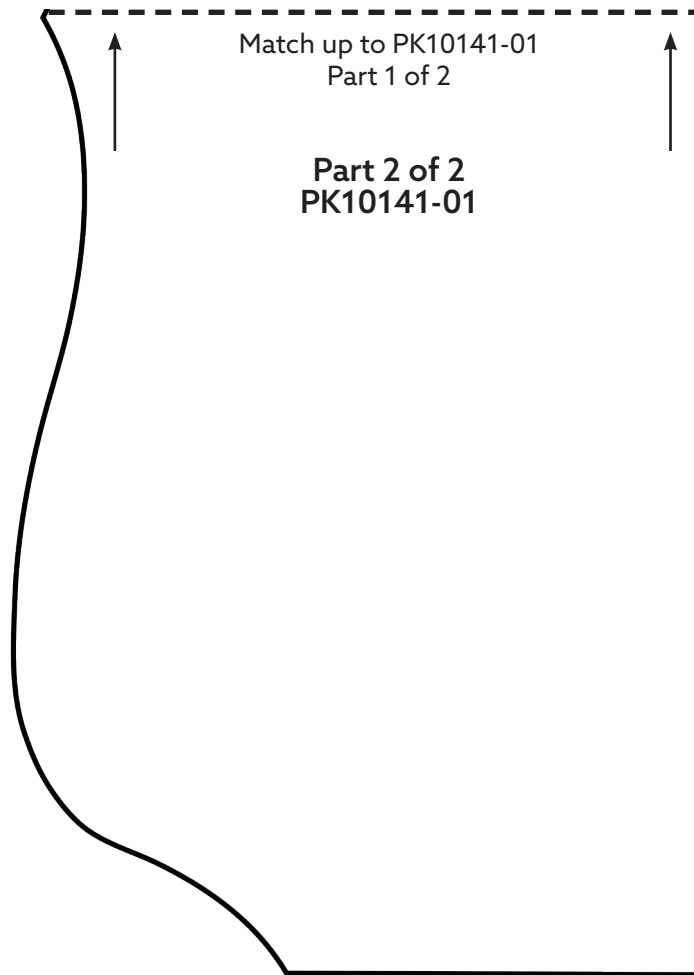
Print at 100%. No scaling. This box measures 1" x 1". Use the box as an accuracy guide when printing templates.



# APPLIQUE PATTERNS



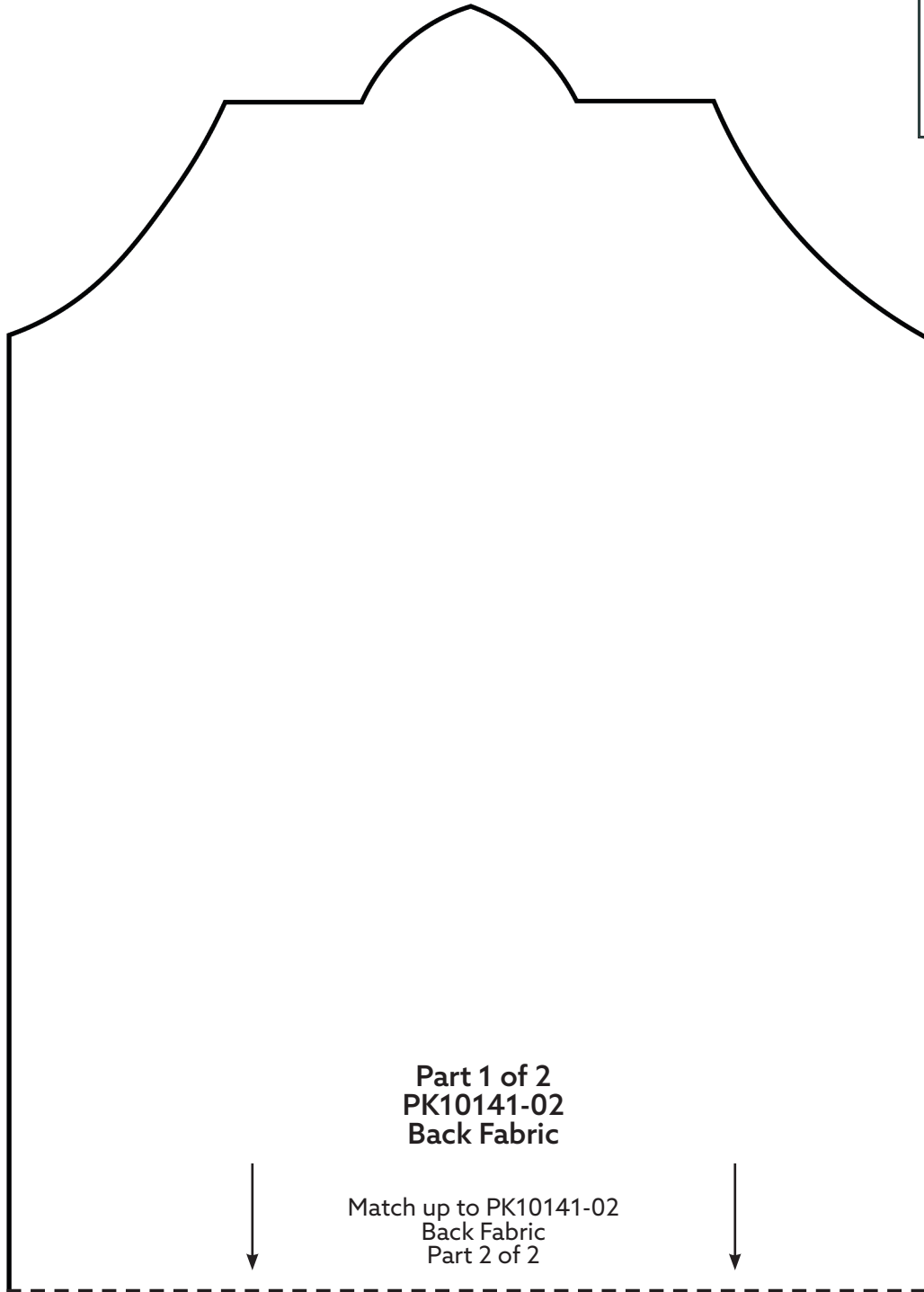
Print at 100%. No scaling. This box measures 1" x 1". Use the box as an accuracy guide when printing templates.



# APPLIQUE PATTERNS



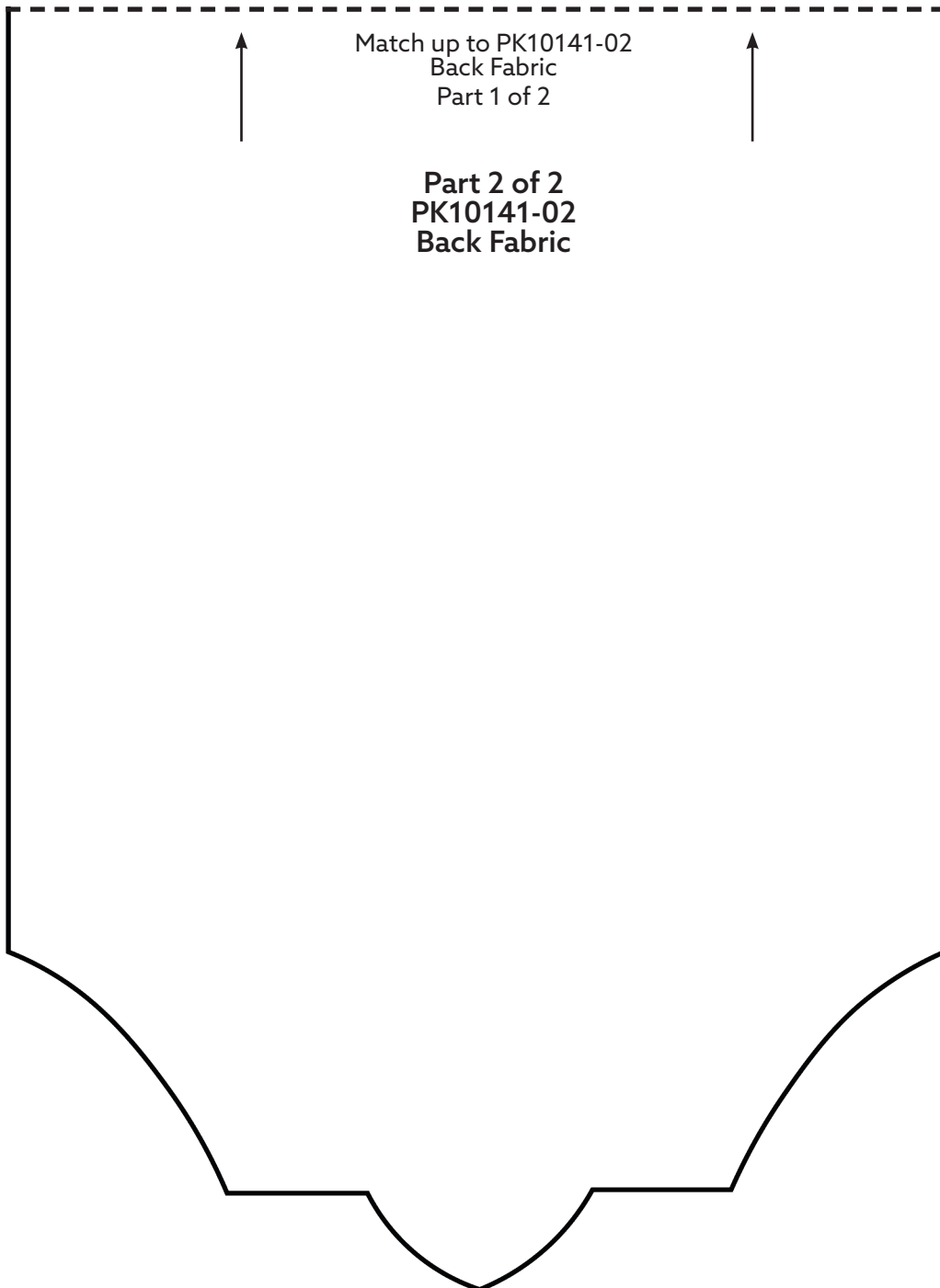
Print at 100%. No scaling. This box measures 1" x 1". Use the box as an accuracy guide when printing templates.



# APPLIQUE PATTERNS



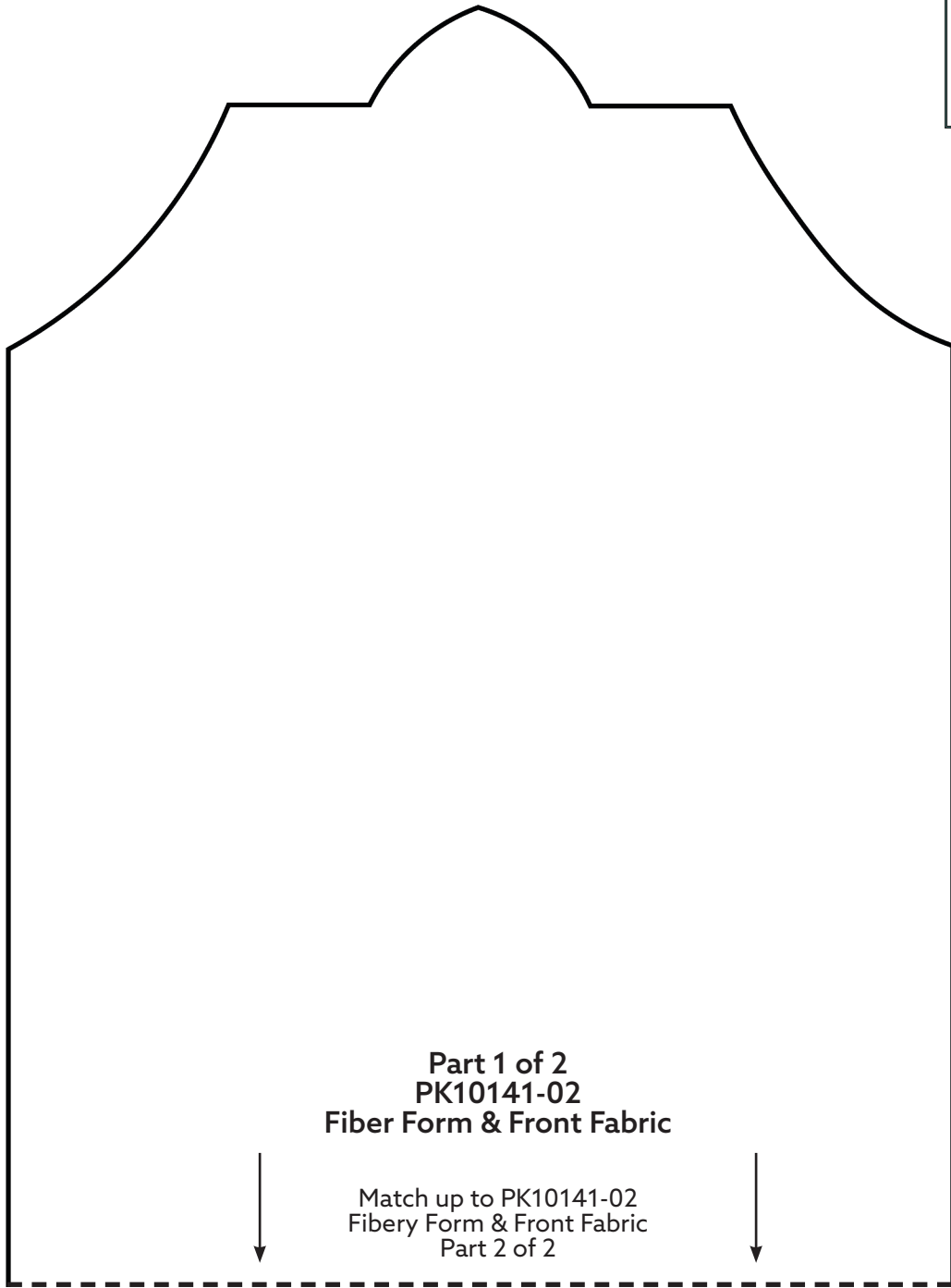
Print at 100%. No scaling. This box measures 1" x 1". Use the box as an accuracy guide when printing templates.



# APPLIQUE PATTERNS



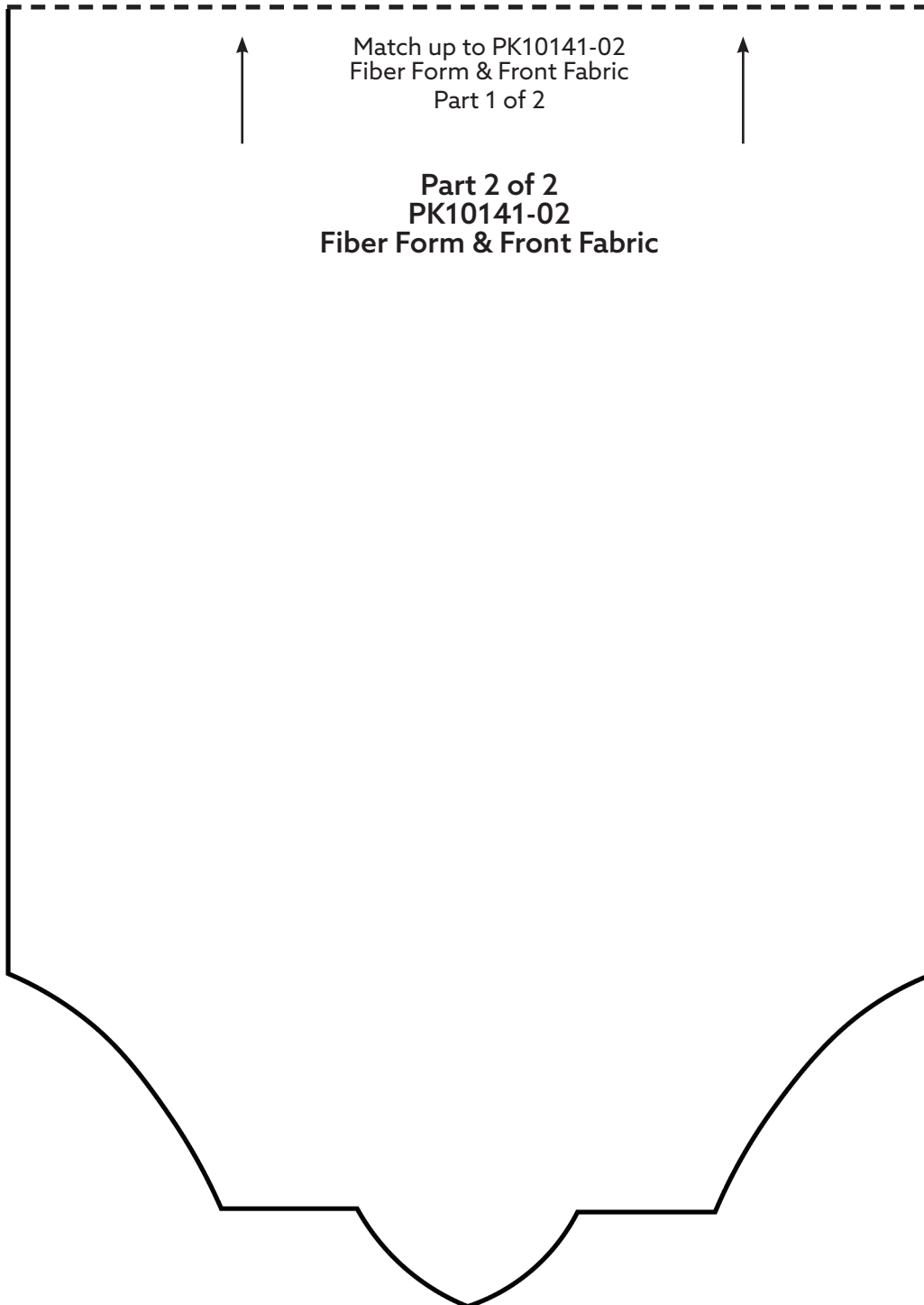
Print at 100%. No scaling. This box measures 1" x 1". Use the box as an accuracy guide when printing templates.



# APPLIQUE PATTERNS

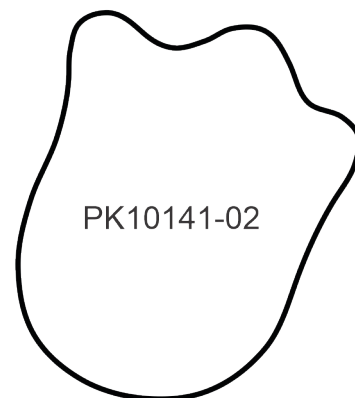
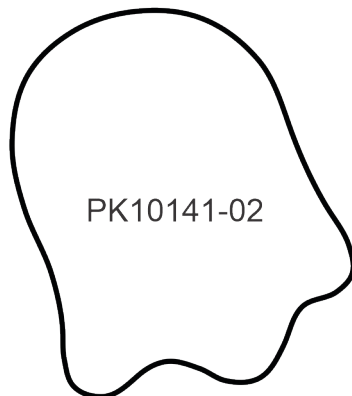
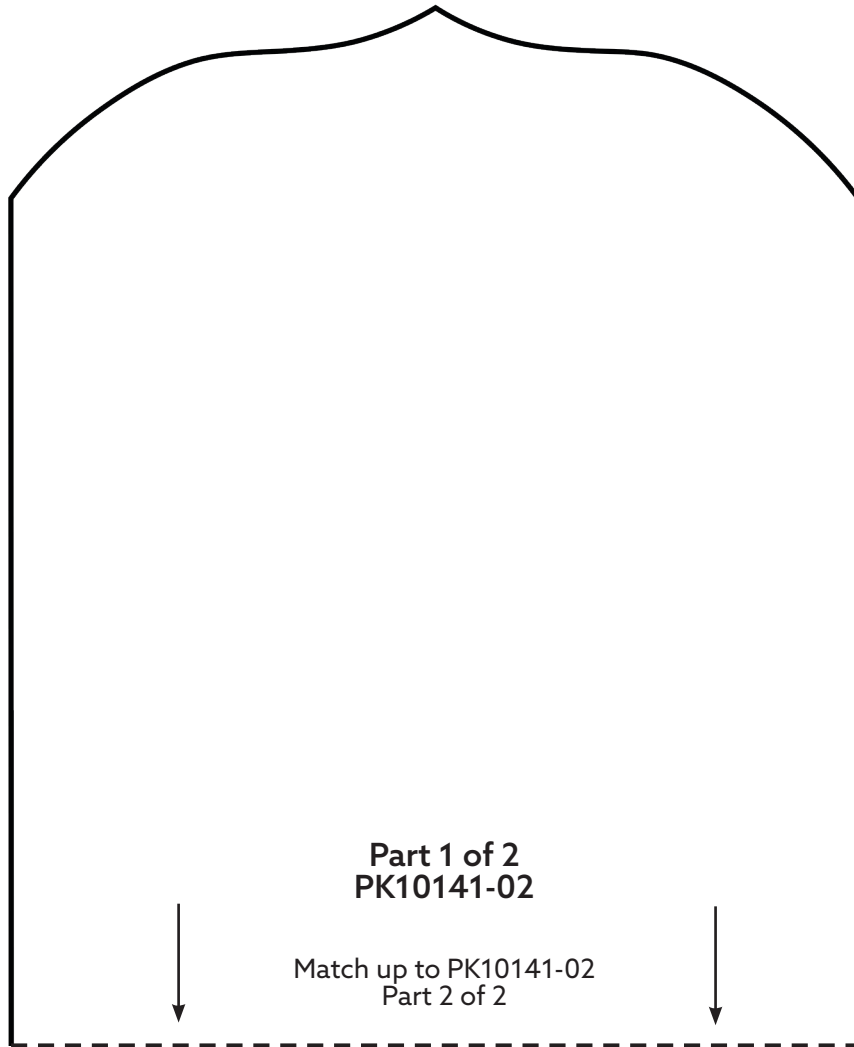


Print at 100%. No scaling. This box measures 1" x 1". Use the box as an accuracy guide when printing templates.



# APPLIQUE PATTERNS

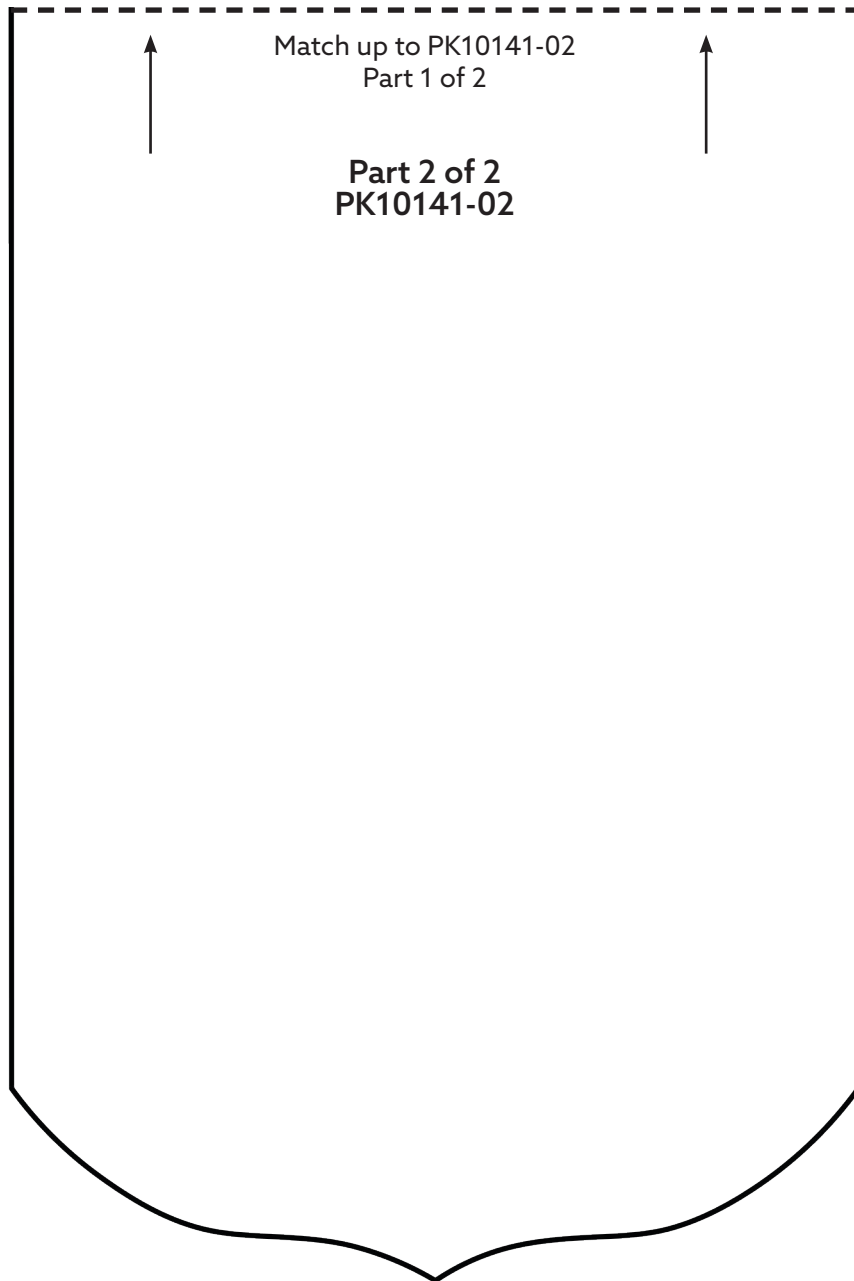
Print at 100%. No scaling. This box measures 1" x 1". Use the box as an accuracy guide when printing templates.



# APPLIQUE PATTERNS



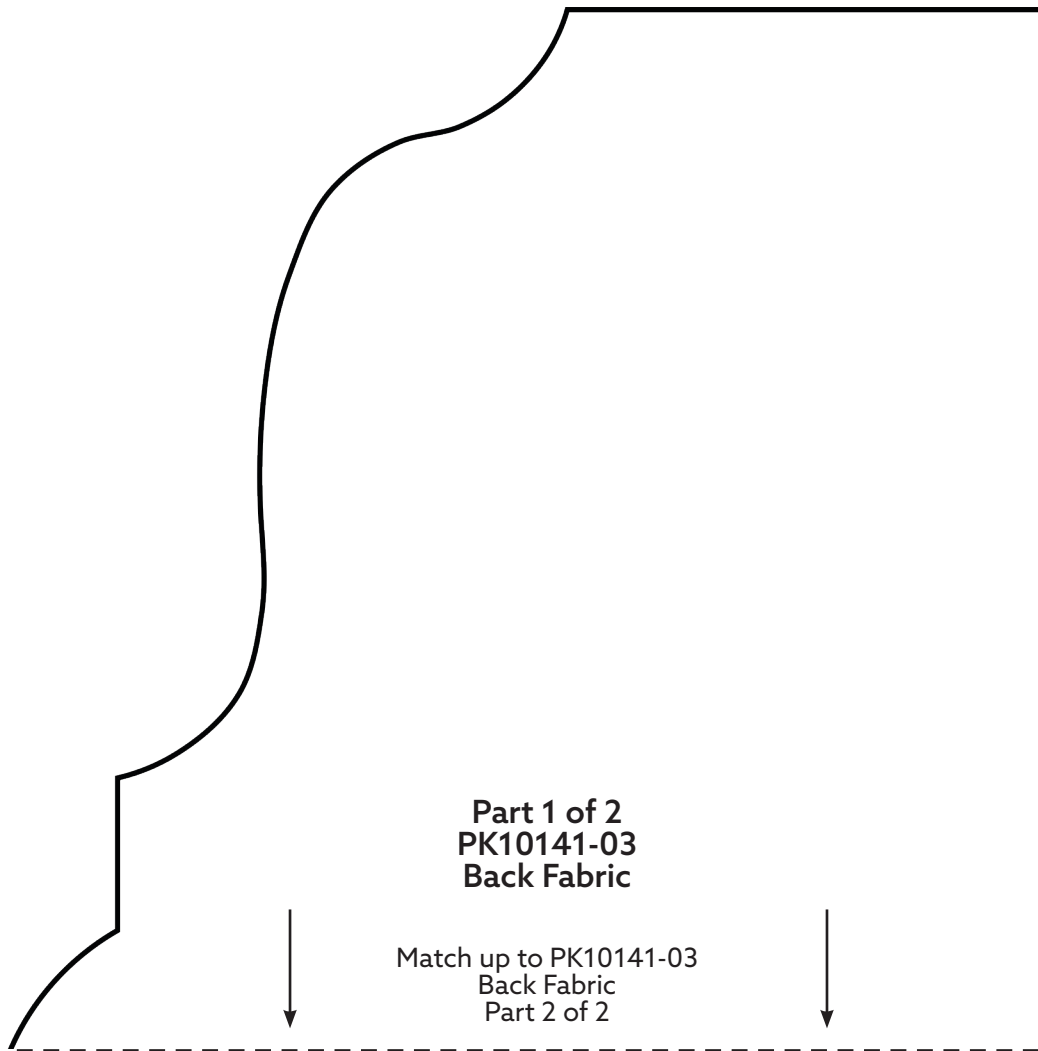
Print at 100%. No scaling. This box measures 1" x 1". Use the box as an accuracy guide when printing templates.



# APPLIQUE PATTERNS



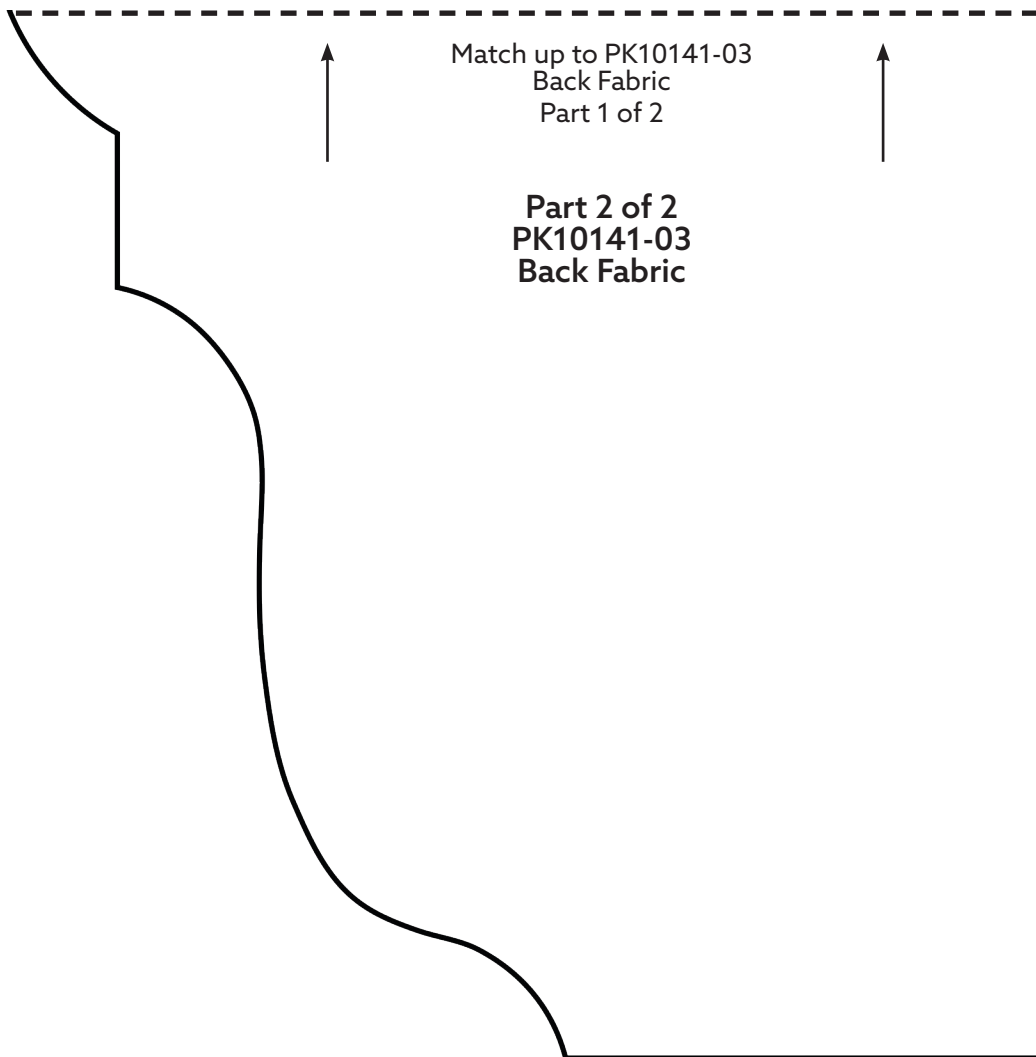
Print at 100%. No scaling. This box measures 1" x 1". Use the box as an accuracy guide when printing templates.



# APPLIQUE PATTERNS



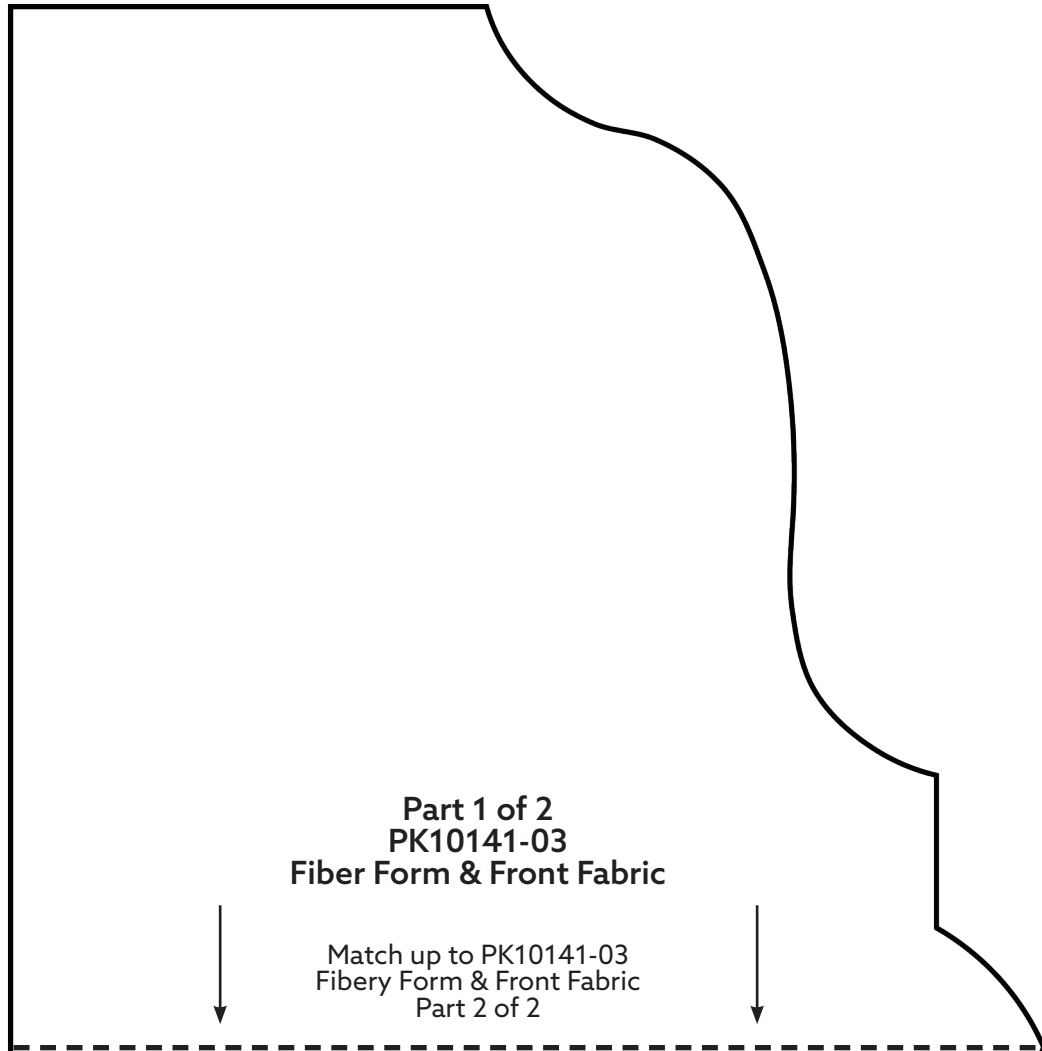
Print at 100%. No scaling. This box measures 1" x 1". Use the box as an accuracy guide when printing templates.



# APPLIQUE PATTERNS



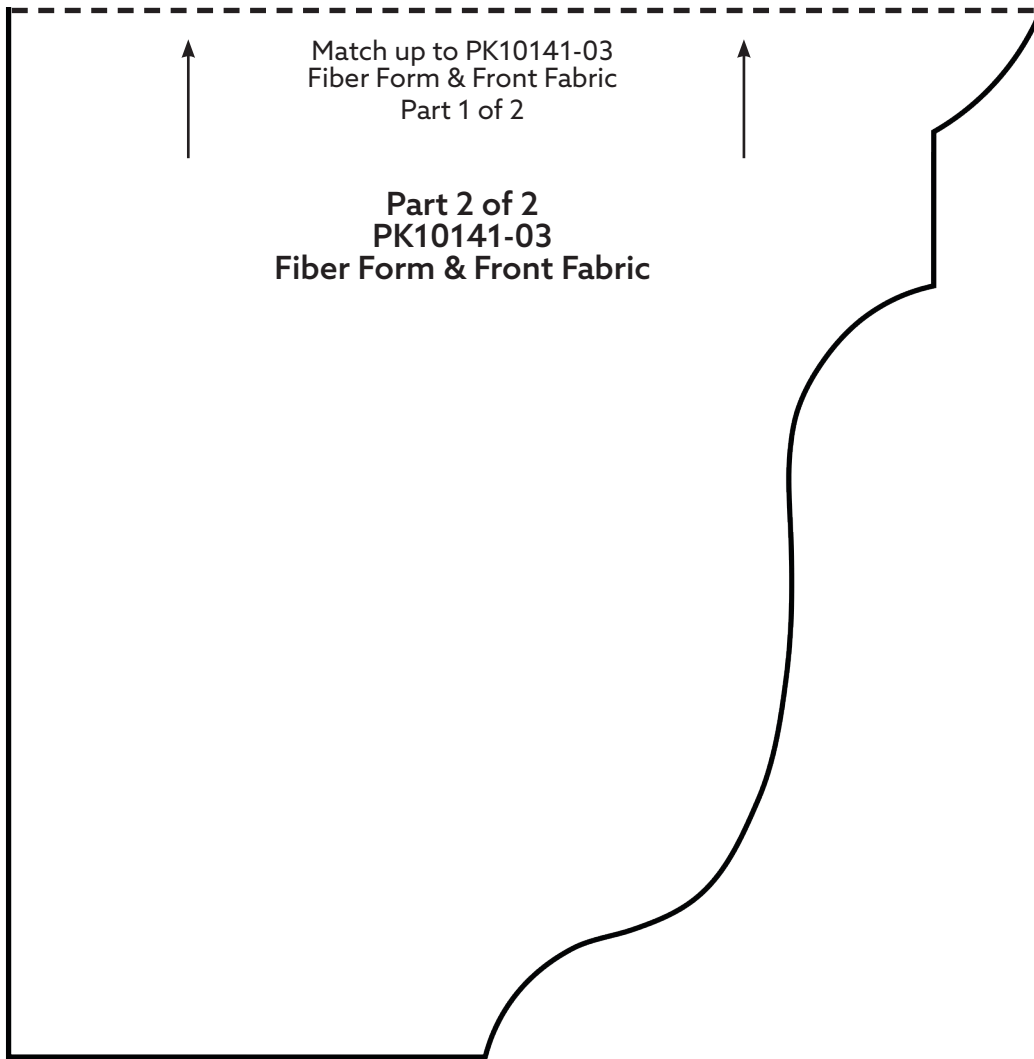
Print at 100%. No scaling. This box measures 1" x 1". Use the box as an accuracy guide when printing templates.



# APPLIQUE PATTERNS



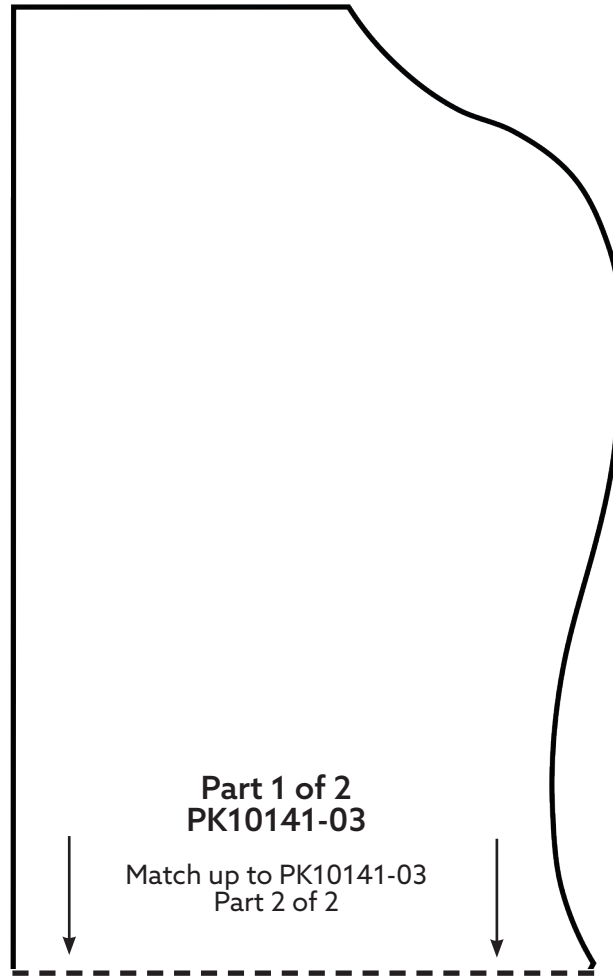
Print at 100%. No scaling. This box measures 1" x 1". Use the box as an accuracy guide when printing templates.



# APPLIQUE PATTERNS

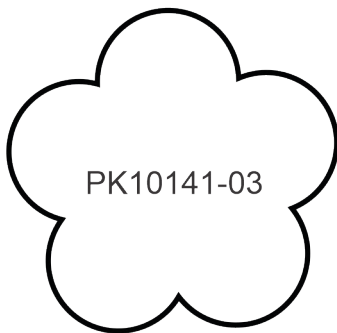


Print at 100%. No scaling. This box measures 1" x 1". Use the box as an accuracy guide when printing templates.

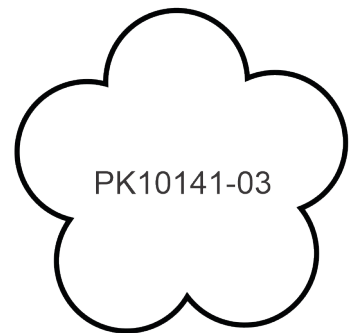


**Part 1 of 2**  
**PK10141-03**

Match up to PK10141-03  
Part 2 of 2



PK10141-03

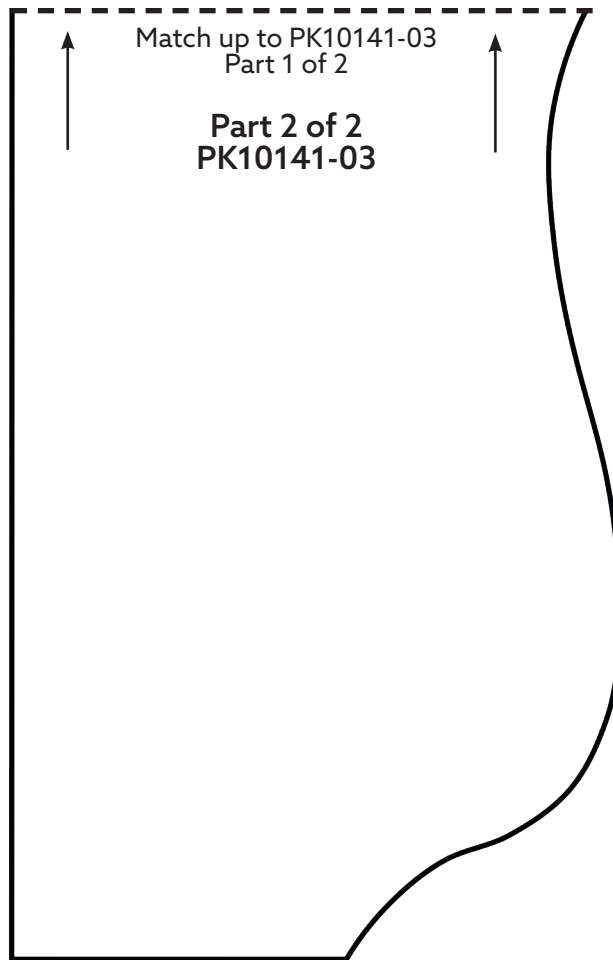


PK10141-03

# APPLIQUE PATTERNS



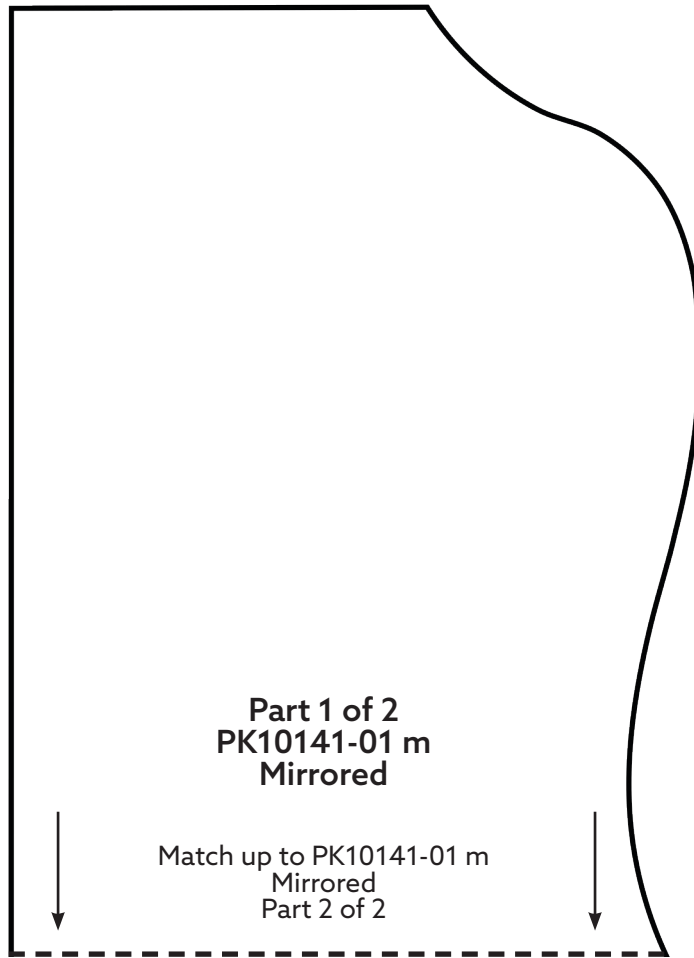
Print at 100%. No scaling. This box measures 1" x 1". Use the box as an accuracy guide when printing templates.



# MIRRORED PATTERNS



Print at 100%. No scaling. This box measures 1" x 1". Use the box as an accuracy guide when printing templates.

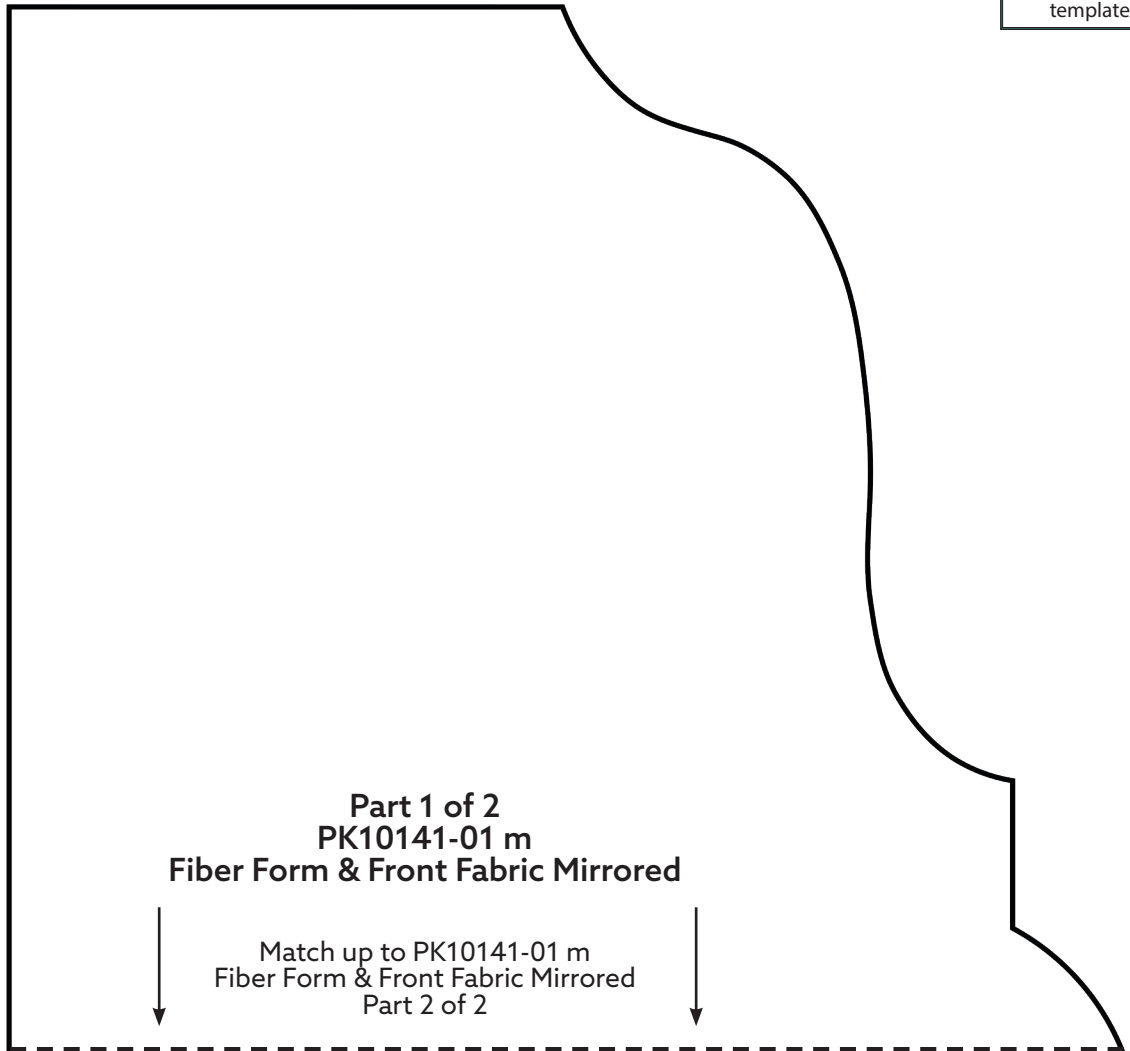




# MIRRORED PATTERNS



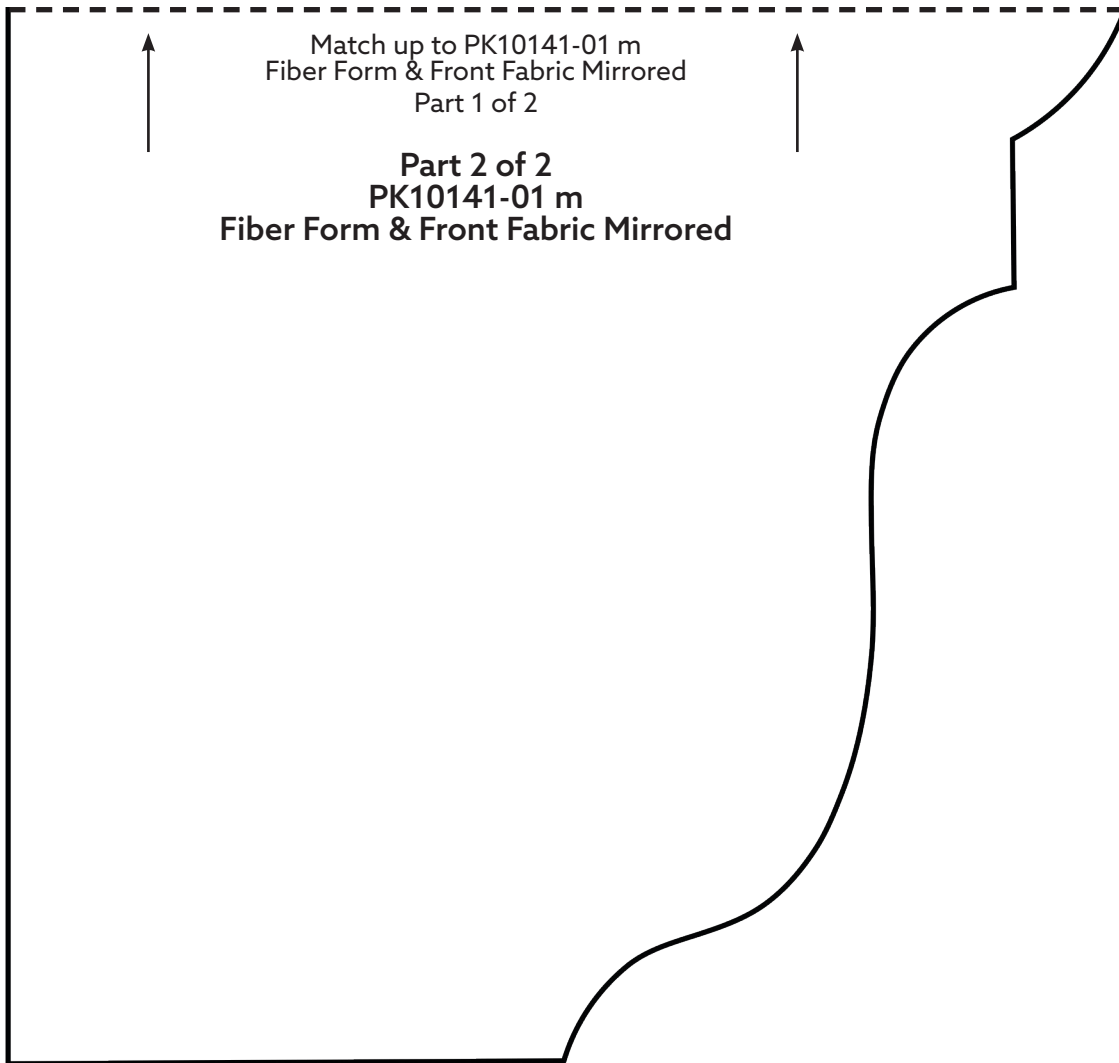
Print at 100%. No scaling. This box measures 1" x 1". Use the box as an accuracy guide when printing templates.



# MIRRORED PATTERNS



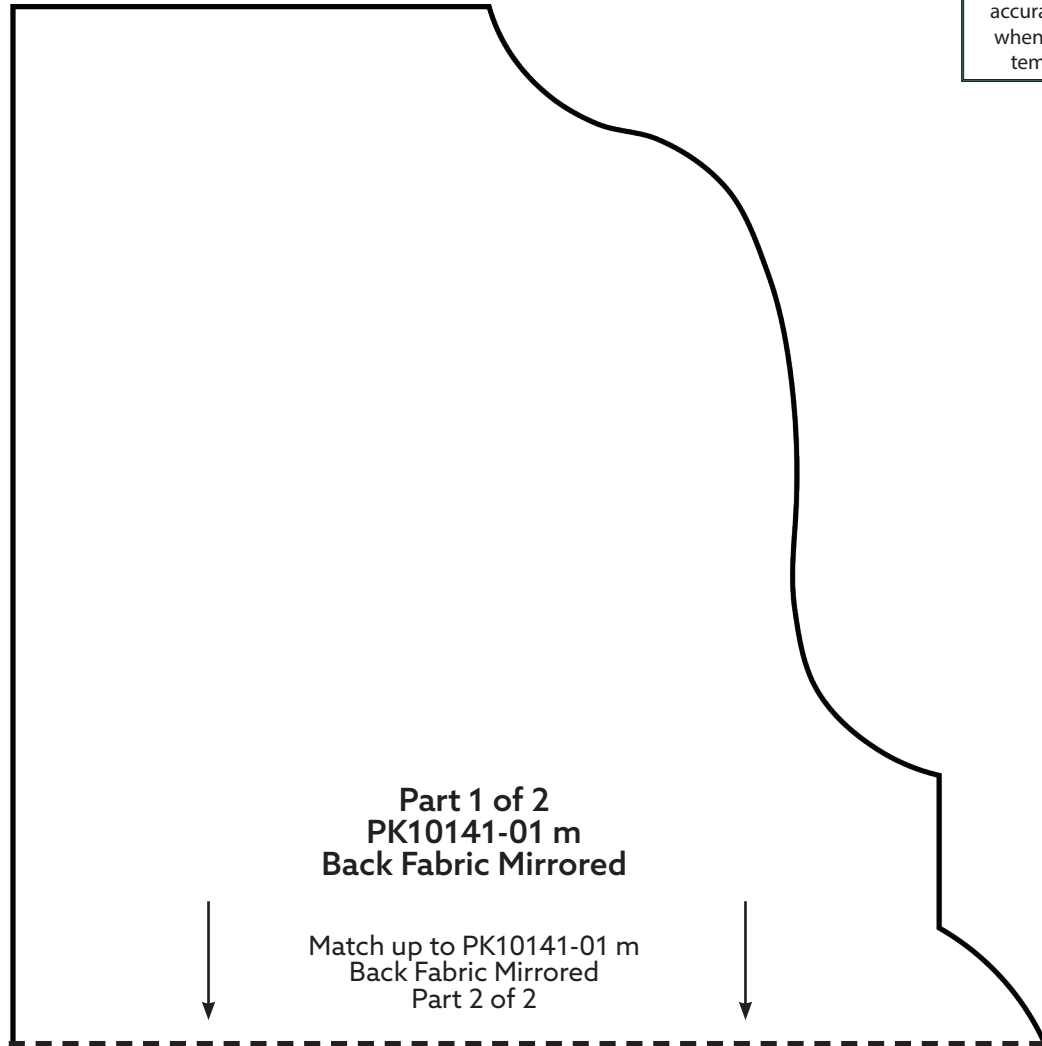
Print at 100%. No scaling. This box measures 1" x 1". Use the box as an accuracy guide when printing templates.



# MIRRORED PATTERNS



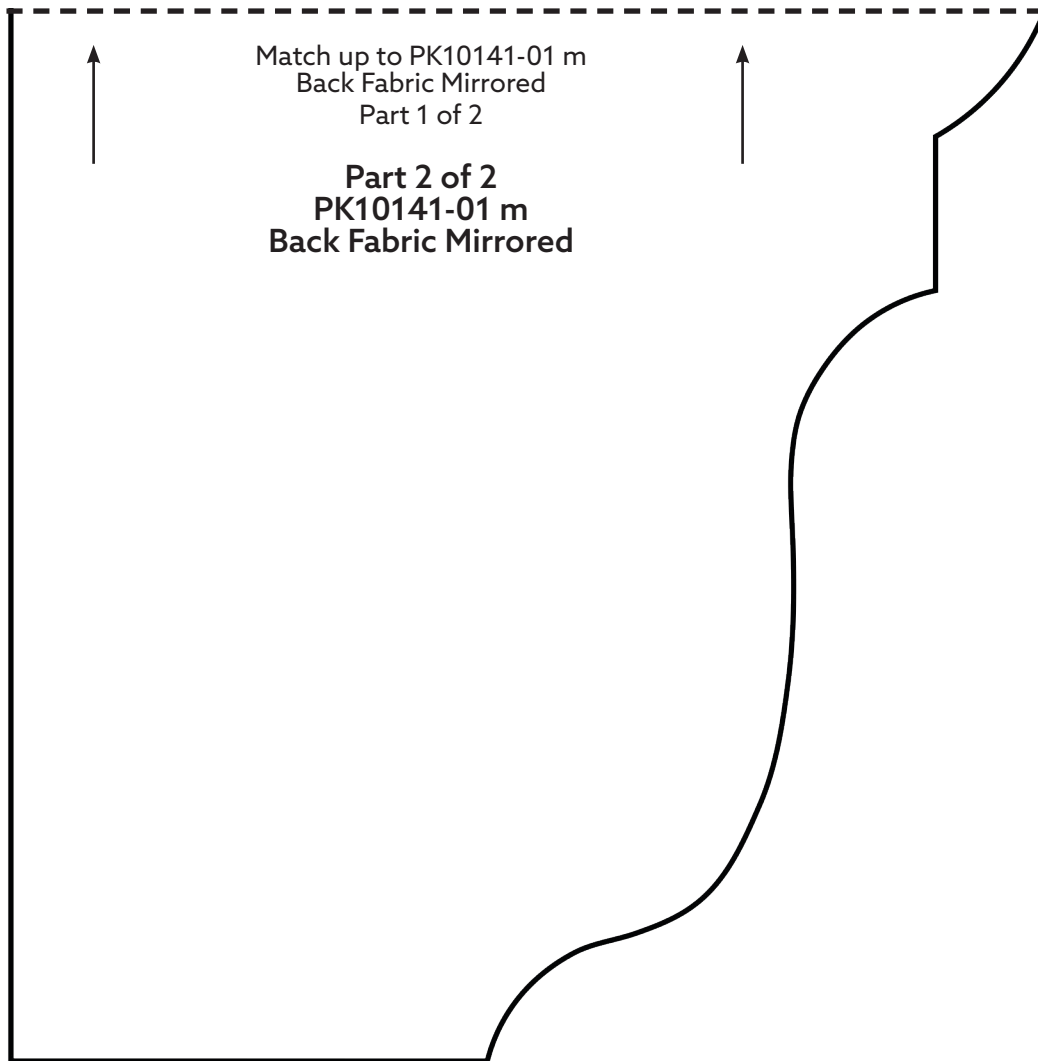
Print at 100%. No scaling. This box measures 1" x 1". Use the box as an accuracy guide when printing templates.



# MIRRORED PATTERNS



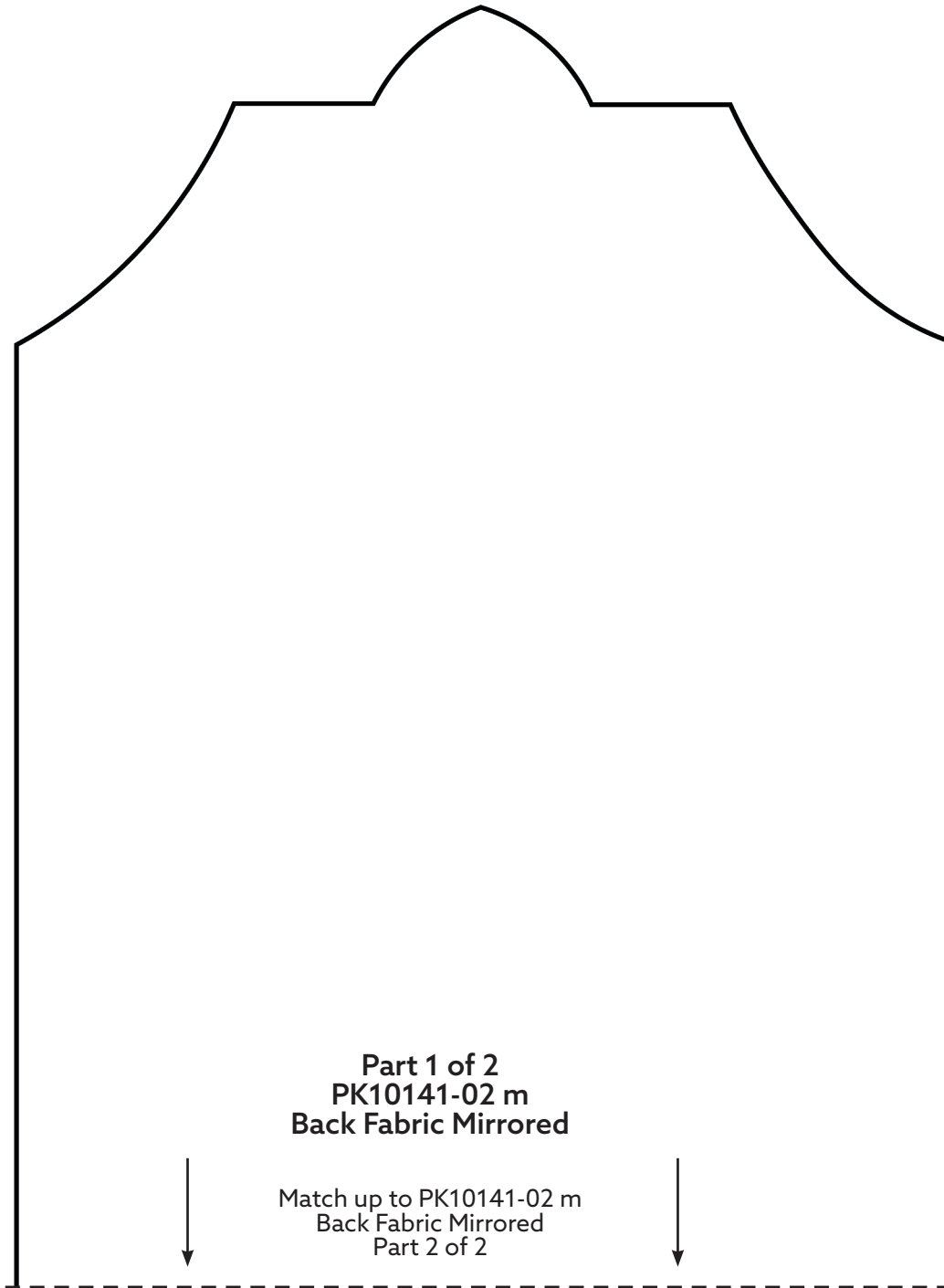
Print at 100%. No scaling. This box measures 1" x 1". Use the box as an accuracy guide when printing templates.



# MIRRORED PATTERNS



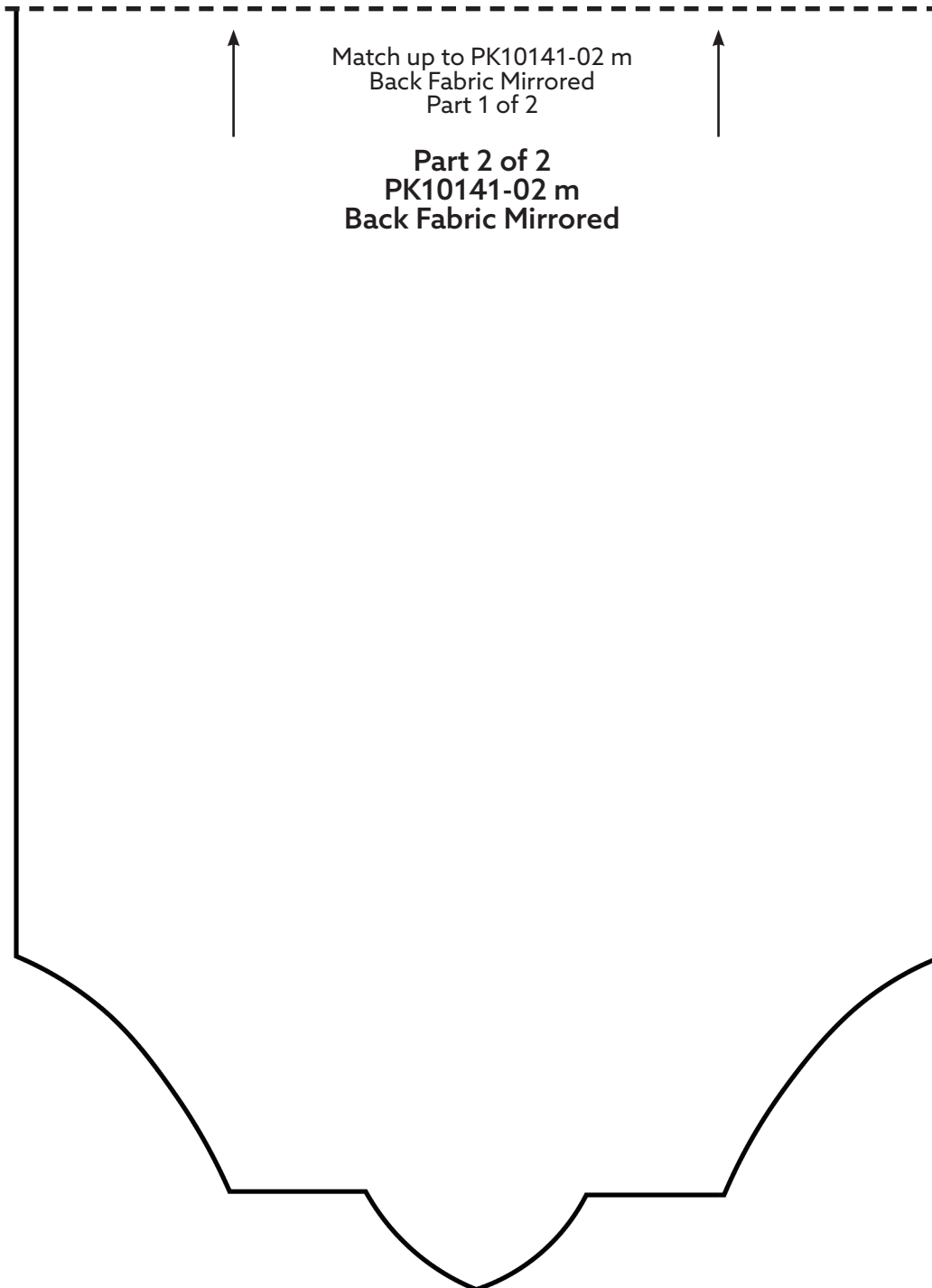
Print at 100%. No scaling. This box measures 1" x 1". Use the box as an accuracy guide when printing templates.



# MIRRORED PATTERNS



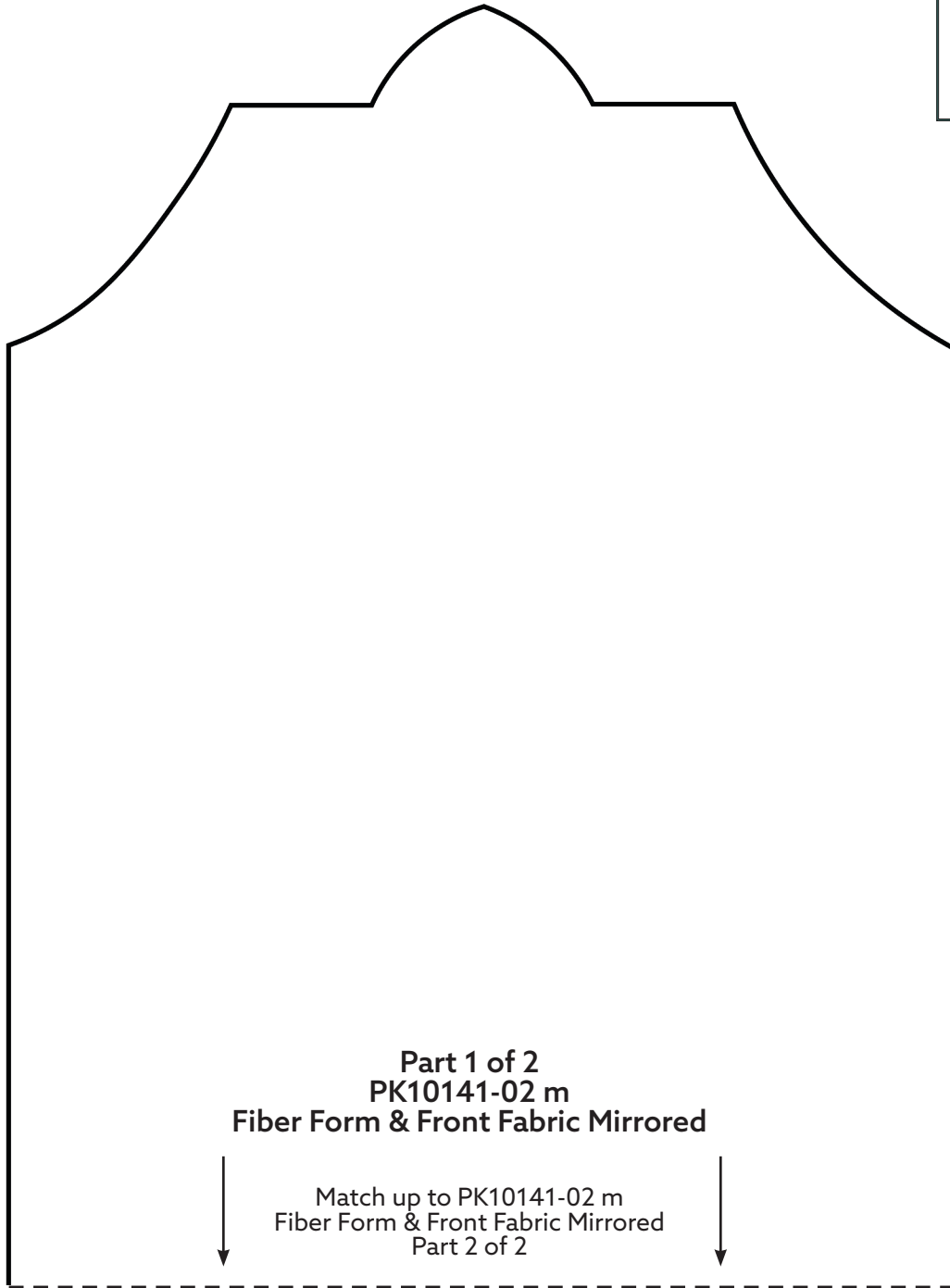
Print at 100%. No scaling. This box measures 1" x 1". Use the box as an accuracy guide when printing templates.



# MIRRORED PATTERNS



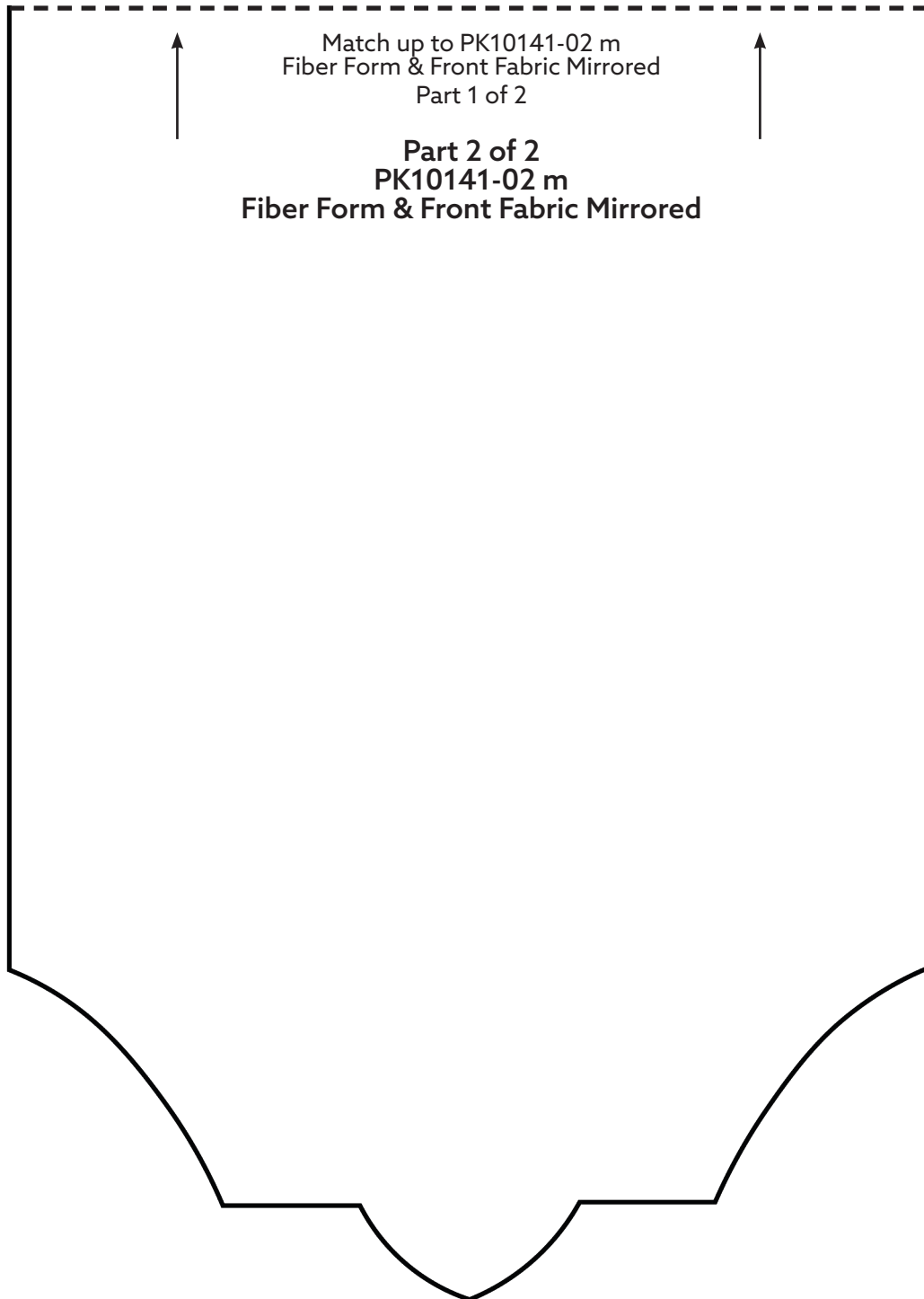
Print at 100%. No scaling. This box measures 1" x 1". Use the box as an accuracy guide when printing templates.



# MIRRORED PATTERNS



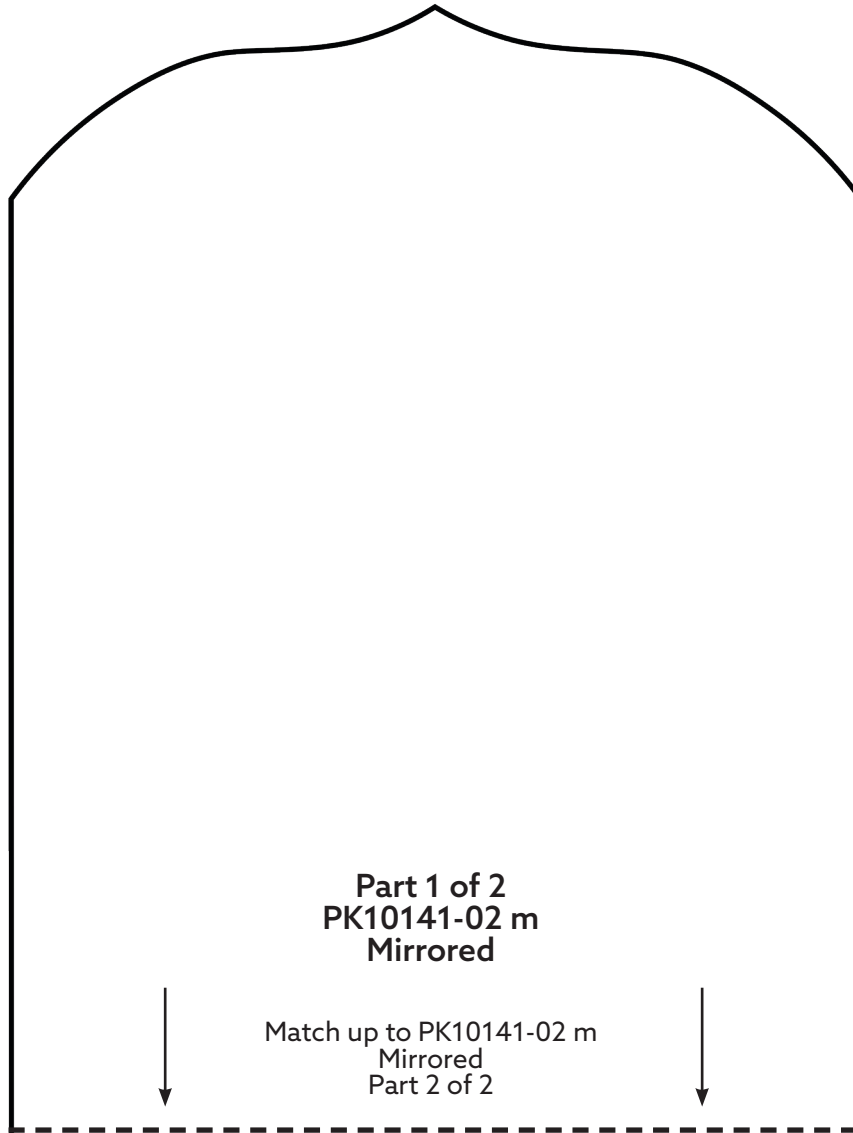
Print at 100%. No scaling. This box measures 1" x 1". Use the box as an accuracy guide when printing templates.



# MIRRORED PATTERNS



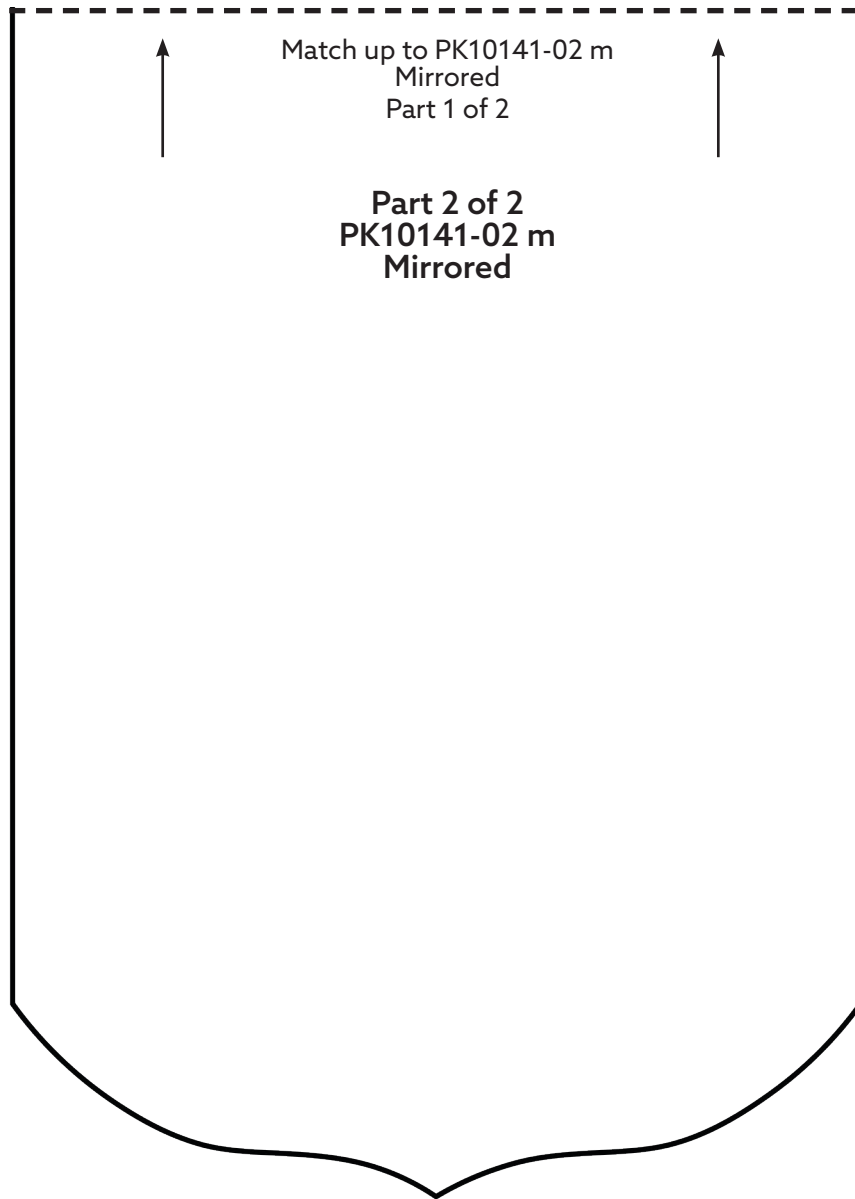
Print at 100%. No scaling. This box measures 1" x 1". Use the box as an accuracy guide when printing templates.



# MIRRORED PATTERNS



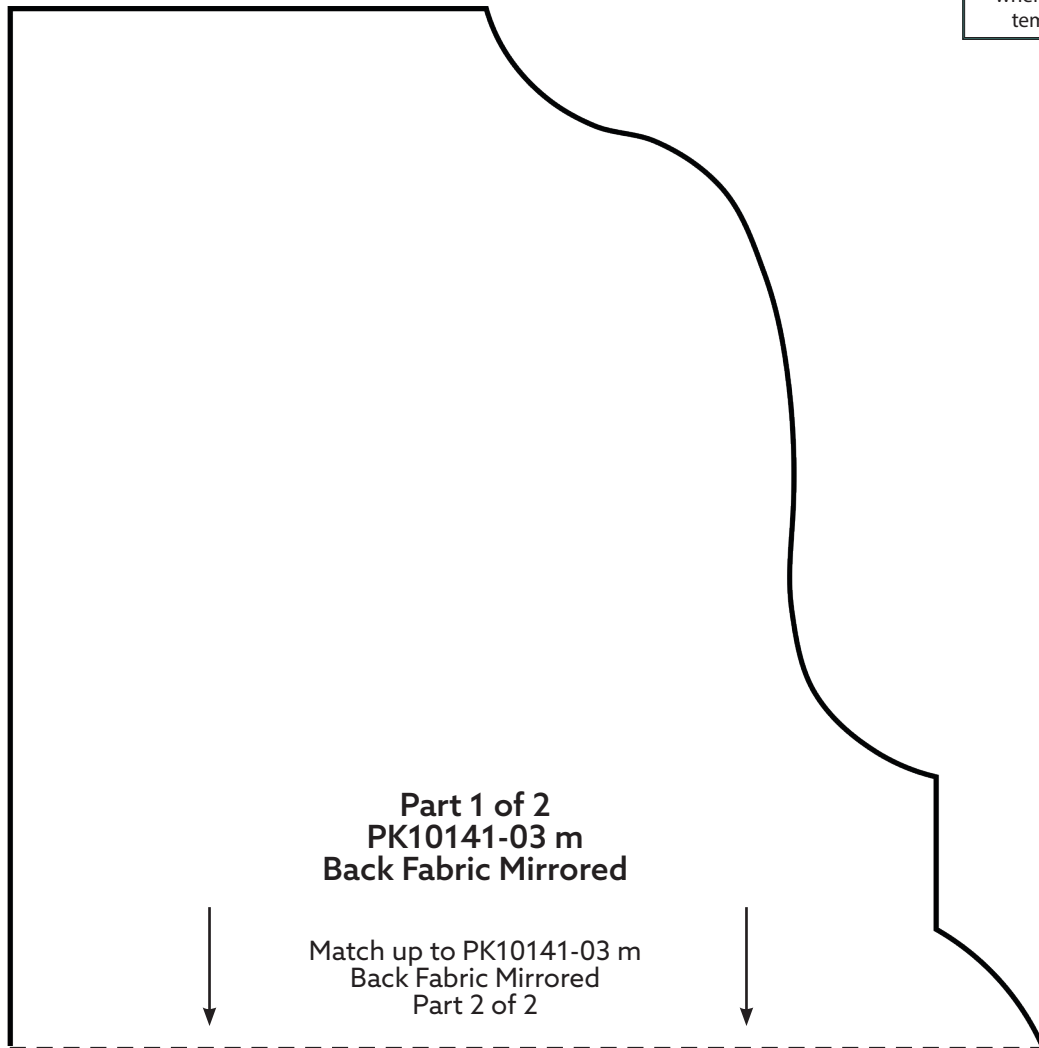
Print at 100%. No scaling. This box measures 1" x 1". Use the box as an accuracy guide when printing templates.



# MIRRORED PATTERNS



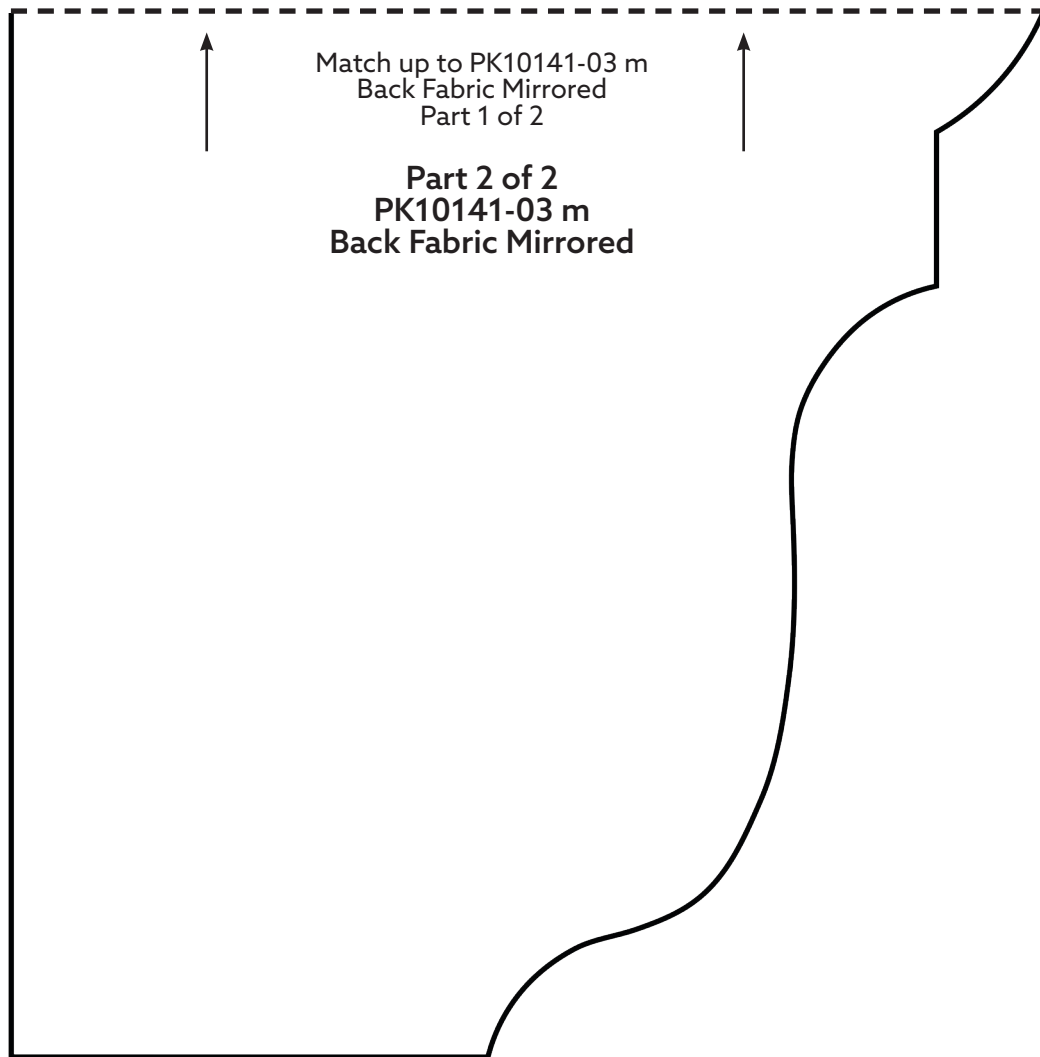
Print at 100%. No scaling. This box measures 1" x 1". Use the box as an accuracy guide when printing templates.



# MIRRORED PATTERNS



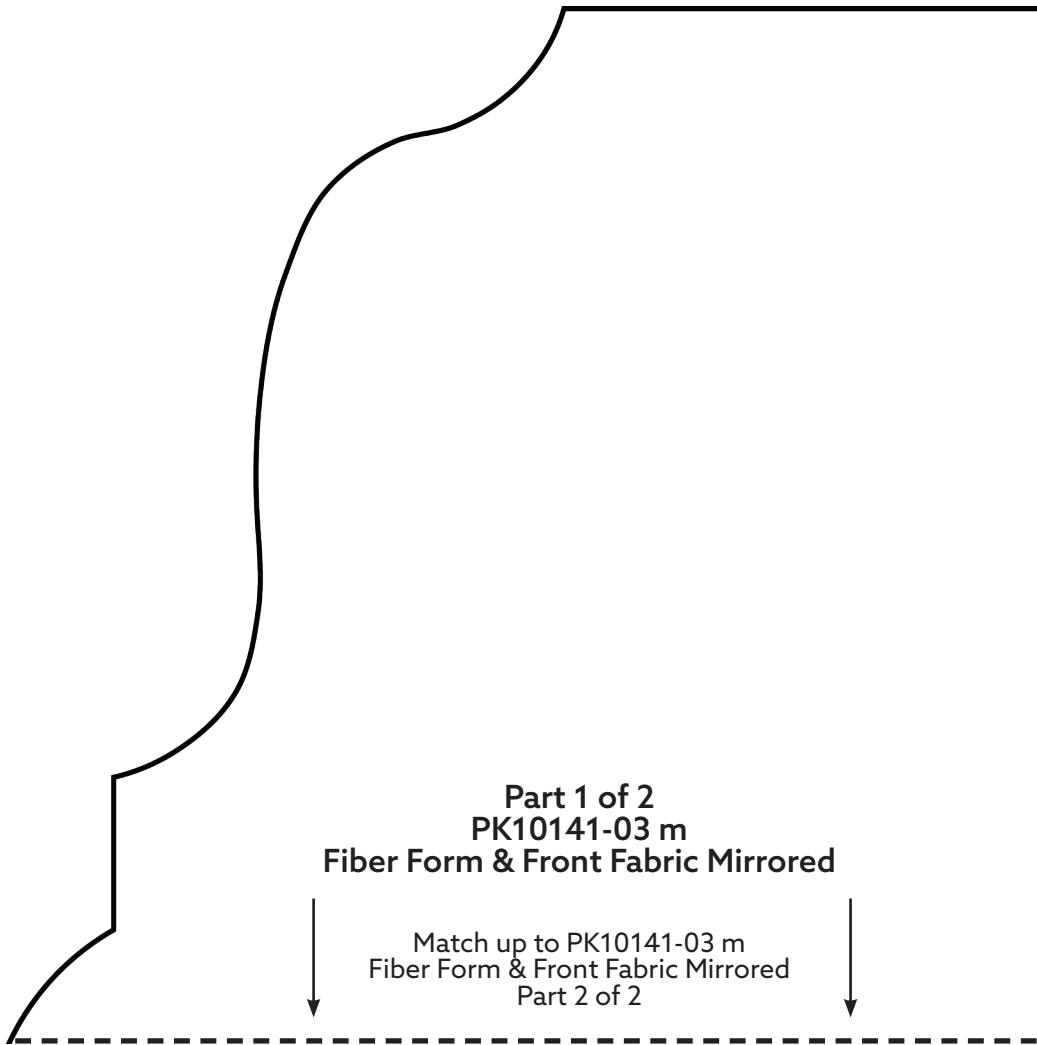
Print at 100%. No scaling. This box measures 1" x 1". Use the box as an accuracy guide when printing templates.



# MIRRORED PATTERNS



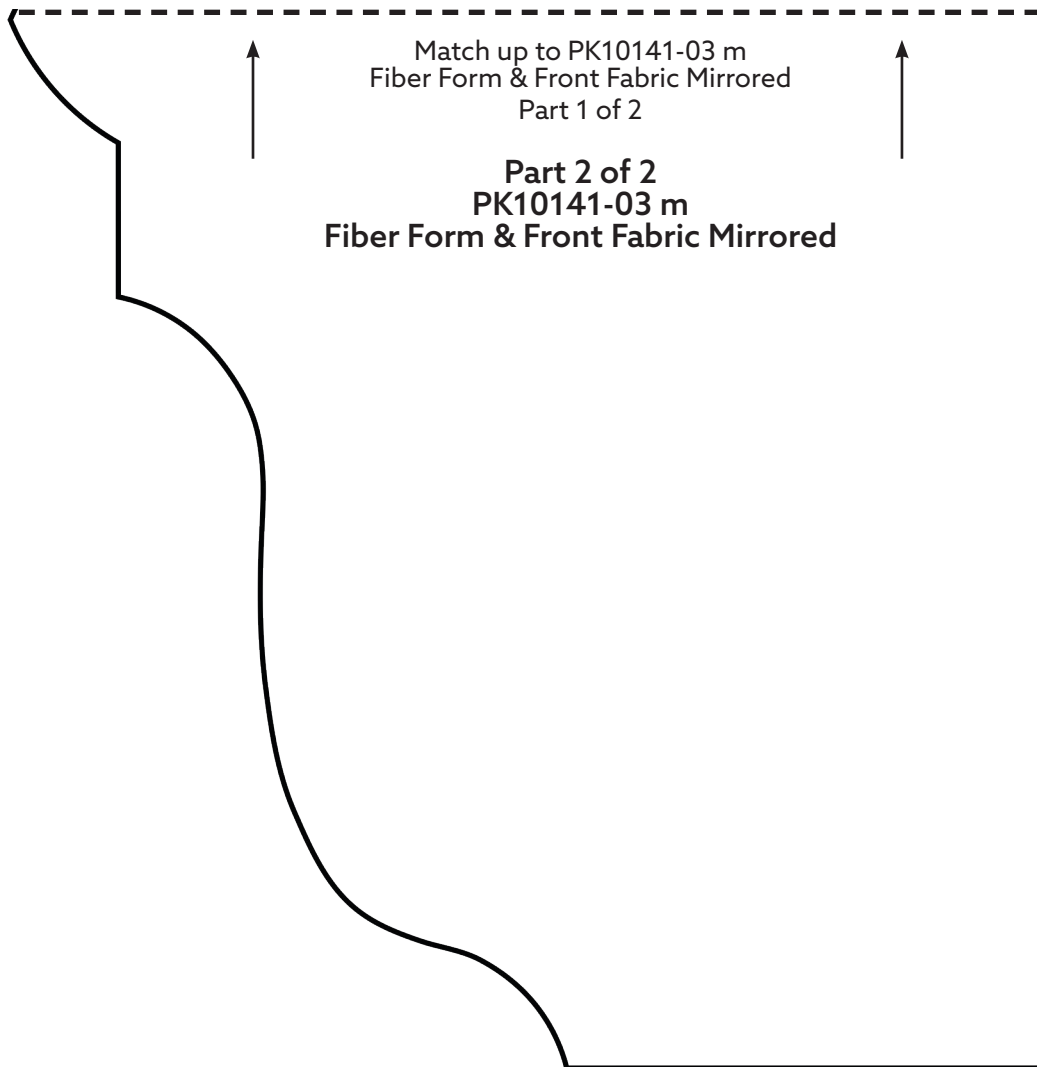
Print at 100%. No scaling. This box measures 1" x 1". Use the box as an accuracy guide when printing templates.



# MIRRORED PATTERNS



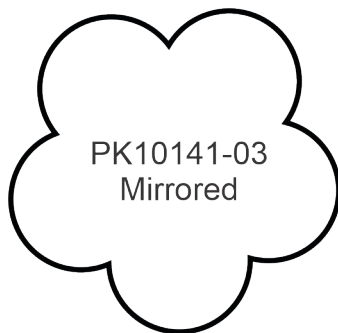
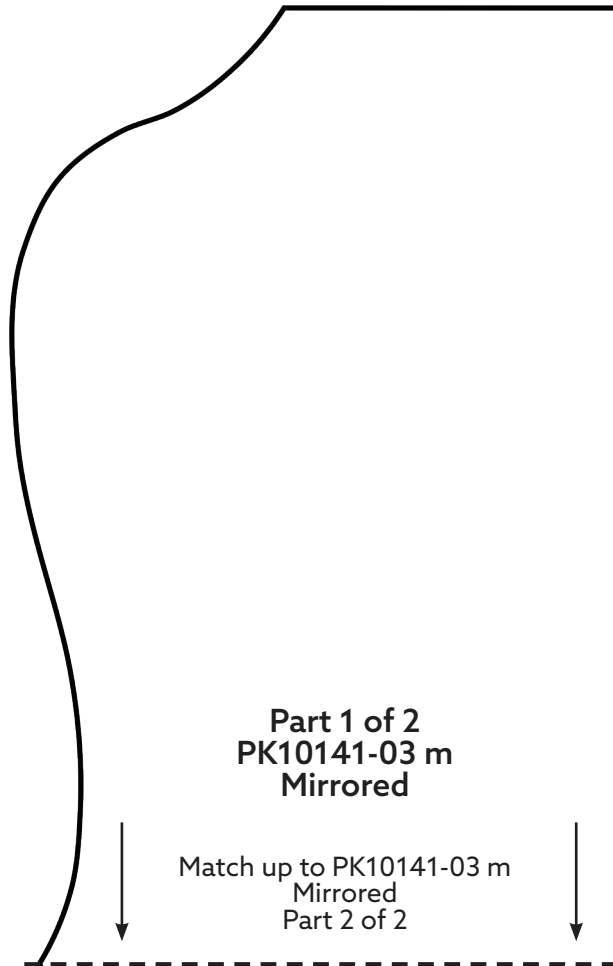
Print at 100%. No scaling. This box measures 1" x 1". Use the box as an accuracy guide when printing templates.



# MIRRORED PATTERNS



Print at 100%. No scaling. This box measures 1" x 1". Use the box as an accuracy guide when printing templates.



# MIRRORED PATTERNS



Print at 100%. No scaling. This box measures 1" x 1". Use the box as an accuracy guide when printing templates.

