

Getting Old Birthday Cards



Collection No. PK10148
6 Designs

MATERIALS



Isacord Thread Colors

- 0145 Skylight
- 0520 Daffodil
- 0741 Wheat
- 0781 Candlewick
- 0934 Fawn
- 1055 Bark
- 1133 Peru
- 2530 Rose
- 2810 Orchid
- 3030 Amethyst
- 3654 Blue Shadow
- 5440 Mint

Note: One spool of 1000 meter thread is adequate for the project unless otherwise noted.



MATERIALS



Stabilizers

- OESD StabilStick TearAway
- OESD Applique Fuse and Fix
- OESD Fuse and Seal

Fabrics/Textiles

- White Quilter's Cotton
- OESD Start Here Greeting Cards, size A7 (5.125" x 7")

Notions & Tools

- OESD Grippy Grid
- OESD Perfect Scoring Tool
- OESD Perfect Embroidery Press Cloth
- Embroidery Needle Sharp 75/11

Isacord Thread Colors

- Per thread chart

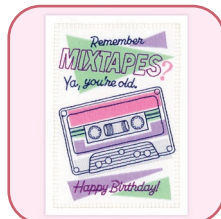


SUMMARY



Finished Project Size: 7" L x 5" W

PK10148-01



Design Size:
7.00 X 5.00 in.

PK10148-02



Design Size:
7.00 X 5.00 in.

PK10148-03



Design Size:
7.00 X 5.00 in.

PK10148-04



Design Size:
7.00 X 5.00 in.

PK10148-05



Design Size:
7.00 X 5.00 in.

PK10148-06



Design Size:
7.00 X 5.00 in.



General Instructions

The greeting card instructions, included in the collection, are general instructions. For demonstration purposes, a sample design that best demonstrates the technique is shown. Design PK10148-01 is shown here. Fabric and thread requirements will vary by design, but the general technique is the same. Applique technique shown is pre-cut. Pre-cut applique patterns are included at the end of the instructions.

Trim jump stitches between color changes for optimal results.

Note: Some thread colors in the instructions have been changed or digitally enhanced for better visibility.

Step 1

- Print the mirrored version of the applique pattern (at 100% scale or 1:1 ratio) onto the paper side of Applique Fuse and Fix. The applique patterns are included at the end of the instructions.
- Cut approximately 1/4" - 1/2" outside the printed applique patterns.



EMBROIDERY



□ Step 2

- Cut the applique fabric 1/4" - 1/2" larger than the applique patterns.
- Fuse the trimmed pattern to the back of the applique fabric with the paper side of the printed pattern up. Hold the iron on the pattern for 10-15 seconds for a secure fuse.



□ Step 3

- Trim the applique fabric on the outer edge of the black outline.
- Set aside.

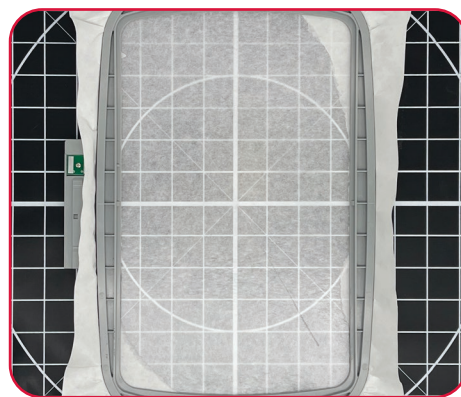


EMBROIDERY



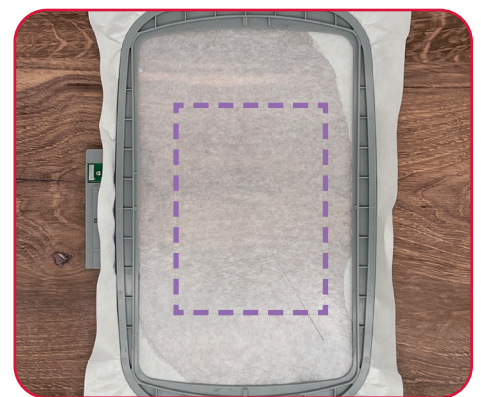
Step 4

- Using the OESD Grippy Grid, hoop one layer of StabilStick TearAway paper (shiny) side up.
- Use the OESD Perfect Scoring Tool to score and remove the paper backing to reveal the adhesive surface.



Step 5

- Load the selected design into the machine.
- Example design is PK10148-01.
- Thread the machine per the thread chart.
- Place the hoop on the machine.
- Stitch Machine Step 1, Card Placement Stitch.



EMBROIDERY



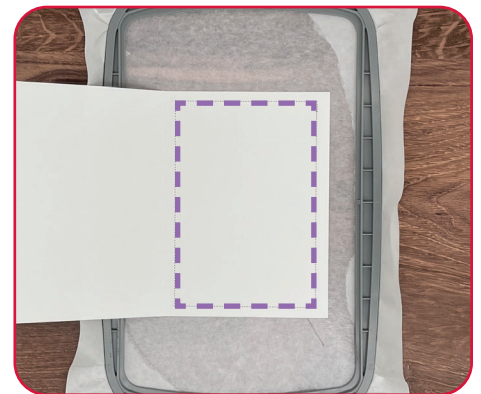
□ Step 6

- Remove the hoop from the machine, but NOT the project from the hoop.
- Place the hoop on a flat surface.
- Place the front of the card face up within the placement guide, lining up all edges.
- Gently finger press the card to secure it to the adhesive surface.



□ Step 7

- Return the hoop to the machine.
- Stitch Machine Step 2, White Fabric Placement Stitch.



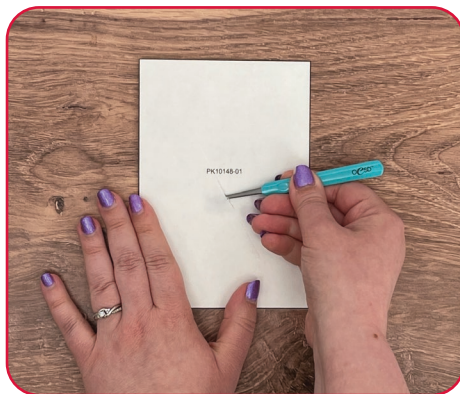
EMBROIDERY



Step 8

- Remove the hoop from the machine, but NOT the project from the hoop.
- Place the hoop on a flat surface.
- On the back of the applique fabric, use the OESD Perfect Scoring Tool to score and remove the paper backing to reveal the adhesive surface.
- Place the applique fabric within the placement stitching.
- Finger press to secure.

 **Tip: Applique Fuse and Fix is repositionable.**



Step 9

- Return the hoop to the machine.
- Stitch Machine Step 3, Fabric Tackdown.



EMBROIDERY



□ Step 10

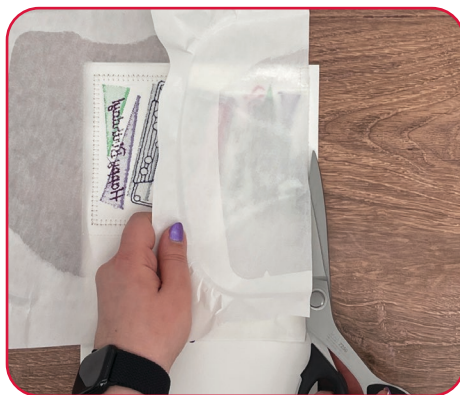
- Stitch the remaining machine steps per the thread chart.



□ Step 11

- When the design is complete, remove the project from the hoop.
- Place the card face down and fold the stabilizer towards the card. Carefully cut the stabilizer away, close to the stitching.

✓ **Note: Cutting away the excess tearaway stabilizer will prevent creasing and bending of the cardstock.**



FINISHING TOUCHES

Step 12

- Cut coordinating cardstock paper (or scrapbook paper) slightly smaller than the front of the card.
- Cut a piece of Fuse and Seal to fit.
- Following the package instructions, with a medium-warm iron, press the Fuse and Seal to the wrong side of the cardstock.
- Let cool.

Tip: Use a card blank, cut in half, to cover the embroidery.



Step 13

- Remove the paper backing from the Fuse and Seal.
- Line up the cardstock over the backside of the card and press to fuse.



FINISHING TOUCHES



□ Step 14

- The card is complete. Enjoy!

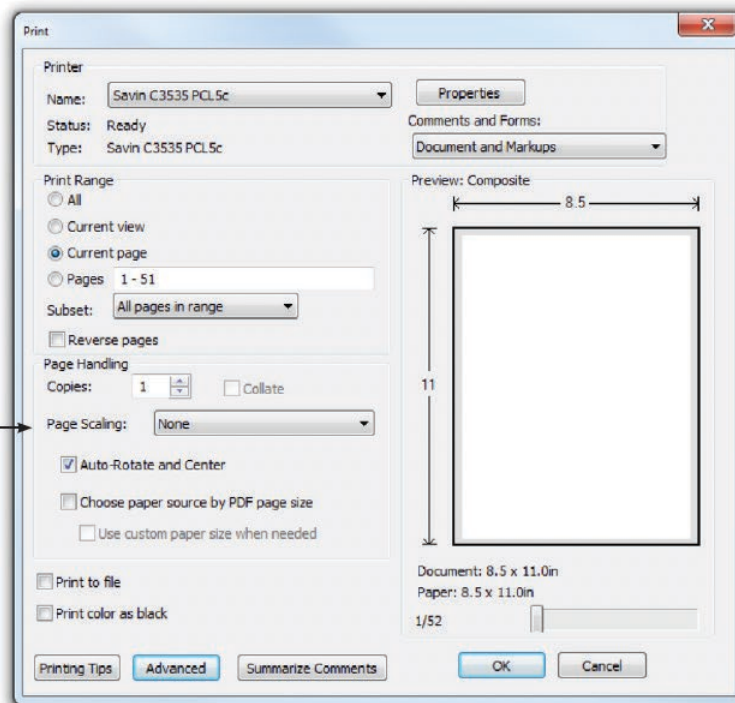


PRINTING INSTRUCTIONS



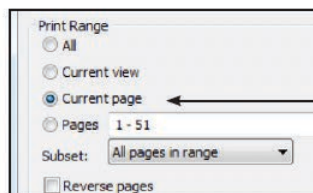
ATTENTION

When printing this document, any page scaling or page fitting options in your print dialog box must be turned OFF or set to NONE so that your files will print out at their actual size. Images not printed at actual size will not function as intended.



TO SAVE PAPER

Only print the desired image by navigating to the image's page, go to File > Print and select "Current page" in the print dialog box. Repeat for each desired image.



APPLIQUE PATTERNS



Print at 100%. No scaling. This box measures 1" x 1". Use the box as an accuracy guide when printing templates.

PK10148-01

APPLIQUE PATTERNS



Print at 100%. No scaling. This box measures 1" x 1". Use the box as an accuracy guide when printing templates.

PK10148-02

APPLIQUE PATTERNS



Print at 100%. No scaling. This box measures 1" x 1". Use the box as an accuracy guide when printing templates.

PK10148-03

APPLIQUE PATTERNS



Print at 100%. No scaling. This box measures 1" x 1". Use the box as an accuracy guide when printing templates.

PK10148-04

APPLIQUE PATTERNS



Print at 100%. No scaling. This box measures 1" x 1". Use the box as an accuracy guide when printing templates.

PK10148-05

APPLIQUE PATTERNS



Print at 100%. No scaling. This box measures 1" x 1". Use the box as an accuracy guide when printing templates.

PK10148-06

MIRRORED PATTERNS



Print at 100%. No scaling. This box measures 1" x 1". Use the box as an accuracy guide when printing templates.

PK10148-01
Mirrored

MIRRORED PATTERNS



Print at 100%. No scaling. This box measures 1" x 1". Use the box as an accuracy guide when printing templates.

PK10148-02
Mirrored

MIRRORED PATTERNS



Print at 100%. No scaling. This box measures 1" x 1". Use the box as an accuracy guide when printing templates.

PK10148-03
Mirrored

MIRRORED PATTERNS



Print at 100%. No scaling. This box measures 1" x 1". Use the box as an accuracy guide when printing templates.

PK10148-04
Mirrored

MIRRORED PATTERNS



Print at 100%. No scaling. This box measures 1" x 1". Use the box as an accuracy guide when printing templates.

PK10148-05
Mirrored

MIRRORED PATTERNS



Print at 100%. No scaling. This box measures 1" x 1". Use the box as an accuracy guide when printing templates.

PK10148-06
Mirrored